

9. Accommodation Schedule

	Type of Area	Name of Area
9.1.	Public Area	9.1 Information Desk 9.2 Café and Bar 9.3 The Newtown Mining Museum 9.4 Search Area 9.5 Multifunctional Exhibition Area 9.6 Librarian Station
9.3.	Semi- Private	9.7 Auditorium/ 'Art and Culture Cinema' 9.8 Classrooms/ reading rooms 9.9 Locker Room 9.1 Library Garden 9.11 Group Interaction Area 9.12 Toilets 9.13 Outdoor Classroom Area 9.14 Staff Room
9.4.	Private Area	9.15 Individual Viewing Stations 9.16 Group Viewing Stations 9.17 Exhibition managers office

9.1.1. Information Station

Description	The Information Station is found at the centre of the facility. All access routes are led to the Information Station A visibally clear route through the Information Station
Function	Centrally located, in the axis pathway through the site It welcomes the visitor to the site and indicates what facilities are available From this point on the site, visitors have access to the Public Visual Information Centre, and the Multifunctional Exhibition Space
Area	58m2
Lighting	Downlighters positioned centrally along the Information area Downlighters positioned above the Information Station desk
Glass Sliding Doors	Potential to open up north and south walls to include a glass sliding door system Open during the day to allow for clear visual access
Security Sliding Panels	Wooden sliding panels positioned infront of glass sliding doors for protection. Open during the day to allow for clear visual access
Information Station Desk Requirements	Positioned to the eastern side of the information space to allow for clear visible access through the site Accommodates all users height requirements with the desk accommodating standing, seating and wheelchairs
Standing Countertop	Standing Requirements - 850mm height countertop (Adler.1999: 2-6) Place for information brochures for forthcoming events
Receptionist Countertop	Receptionist Requirements - 710mm height (Adler 1999. 2-7) stationery and cupboard space under the countertop
Wheelchair countertop	Wheelchair/ Children /Seating Countertop Requirements - 690mm height (Adler 1999. 2-20)
Signage	Information signage directing users to the Public Visural Information Centre and the Multifunctional Exhibition Space
Typical Materials	
Application	Material
Floor	White Pigmented Cemcrete PG Bison Laminates in stripes
Information desk	Polycarbonate Multiwalling sheeting in an aluminium frame. Pg Bison wood veneer countertop
Standing Countertop	PG Bison MDF Board with PG Bison Laminates in stripes over the counter

9.1.4 Search Area

Description

The search stations are the first step when using the Public Visual Information Centre. The 'Ribbon' leads the users through to these stations, which form part of the 'Ribbon' itself.

Function

The search stations allow users of the Public Visual Information Centre to research what topics are available on film in the facility . The chosen topics are automatically emailed to the librarian station.

Area

56m

Lighting

Downlighters positioned centrally through the area, continuing along the 'Ribbon" from the Information Area spotlights should be aimed at the individual search stations

Facilities Required

Standing Countertop

Standing Requirements - 850mm height countertop (Adler.1999: 2-6)

Wheelchair/ seating countertop

Wheelchair/ Children /Seating Countertop Requirements - 690mm height (Adler 1999. 2-20)

Loose ottoman chairs, positioned under the countertop, can be pushed in and out to adjust to the users requirements.

Standing Countertop - higher

Standing Requirements - 1100mm height countertop (Adler.1999: 2-6)

LCD Monitor

LG model : L1718S 17" slim bezel LCD monitor

(w) 418 (d) 180 (h) 414

Interactive Screens

U-Touch" touch screen overlay placed onto the screen for an interactive screen

LCD Monitor table mount

: ErgoMounts EMISZB desk mount

Typical Materials

Application

Floor

Material

White Pigmented Cemcrete

PG Bison Laminates in stripes

Countertop

PG Bison MDF Board with PG Bison Laminates in stripes over the counter

9.1.5. Multifunctional Exhibition Space

Description	The exhibition area needs to be flexible and easily adjustable depending on the needs of the current display The area needs to accommodate presentations by the film directors as well as accommodating films being viewed in the same exhibition room.
Function	The exhibition space allows film makers an opportunity to display their work in a public facility Monthly themes will determine the film topic exhibited
Area	113m ²
Lighting	The lighting system needs to be adjustable to meet the requirements of each exhibition. The lighting system needs to be on two different circuits to allow the space to be flexible. The spot light system must be positioned on a track system running through the centre of the exhibition room
Facilities Required	
Sliding Panels	10mm thick Multiwall Polycarbonate sheeting in an aluminium frame is attached to the upper mezzanine level through the Henderson Sliding Door Gear -Straight Sliding Pacer Glass tophung system
Glass- Vu Film	Glass Vu3 GV3F adhesive film attaches to the inside of the Polycarbonate sheeting turning the panel into a display device.
Projectors	Rear projectors attached to a track system attached to a track system on the ceiling
Lecturn	Moveable lecturn with Windows Based Remote Control Panel that controls the lighting and sound from Laptop
Wall mounted LCD screens	LCD Monitor L3000A 30" TFT 697x431x50.9
Sound Domes	20" Diameter Sound Dome Model 7052 with 514mm PETG clear polymer dome
Seating	Comfort Creations Ottomans that are moveable Folding/stacking chairs for presentations
Typical Materials	
Application	Materials
Floor	White Pigmented Cemcrete PG Bison Laminates on MDF Board

9.2.1. Auditorium	
Description	The auditorium needs to be an adjustable area that can function both in the day and nighttime It has two entrances into the space with two foyer areas.
Function	The auditorium functions as part of the Public Visual Information Centre in the daytime and as as 'Art and Culture' Cinema at nighttime.
Area	229m ²
Lighting	The lighting system needs to be on two circuits An A/C unit needs to be installed for the acoustics of the spaces to work effectively.
Facilities Required	
Entrance Foyer	
Standing Countertop - higher	Standing Requirements - 850mm height countertop (Adler.1999: 2-6)
Wheelchair countertop	Wheelchair Countertop Requirements - 690mm height (Adler 1999. 2-20)
Waiting Benches	Ottomans that can be pushed together in different arrangements
Plasmas	42" LCD 'Monitor LGRT-42LC2RR
Private Foyer	
Seating	Moveable benches for waiting area.
Fold up counter	Fold up catering counter stored in Storage Room in Auditorium for serving snacks at company functions
Projector	Rear projectors attached to a track system attached to a track system on the ceiling
Glass- Vu Film	Glass Vu3 GV3F adhesive film attaches to the inside of the Polycarbonate sheeting turning the panel into a display device. The film displayed can be visible from the outside of the polycarbonate sheeting.
Entrance Room (sound)	Two acoustic sliding doors opening into the auditorium space. Prevents unwanted sound from travelling directly into the acoustic protected space. Alyos Technology wall systems with acoustic material surrounding walls
Storage Cupboards	Small cupboards for storage of the Ribbon lapdesks. Easily opened and closed. Large shelving space to allow for Lapdesks to be stacked in smaller piles to prevent them from unbalancing and falling out. Alyos Technology wall systems with acoustic material on doors.
Storage Room	Storage area for extra seating for outdoor cinema at night and other requirements for facility
Technical Equipment Room	Storage of tables for function area on first floor. Enough room to walk in and collect the needed equipment. Storage shelves that are easily accessible. Lockable room.
Fire Escape	Clearly marked escape route. Door opening outwards.
Acoustic Panels	Alyos Technology wall systems with acoustic material surrounding walls
Seating	Carpetted stairs in bigger station in Milliken Carpet 755. 170. Classic Grey
Sound System	5.1 Surround Sound Speakers. Two positioned at back, three in front
Projector	Suspended from the ceiling in centre of the auditorium. Controlled by Laptop on lecturn in the front.
Lecturn	Moveable lecturn with Windows Based Remote Control Panel that controls the lighting, sound and films from Laptop

**9.2.5. Group Interaction Area
Description**

The space needs to encourage interaction therefore needs to be flexible to suit users needs.
More noisy area than the rest of the facility

Function

New construction that connects the two existing buildings together.

Area

The area is the more informal area within the facility that houses the group discussion area, and the needed amenities in the facility.

Lighting

241mm²

Downlighters are found throughout the area

Adjustable spot lights are positioned above the tables for the users comfort.

Group Tables

Area for groups to discuss their studies together and feed off eachothers knowledge.

Tables moveable and can join together in different layouts

Countertops have electric plugpoints for laptops to be plugged in

Toilet area

Male and Female Toilets with a disabled toilet in each

Accessible for the users of the facility during the day as well as the cinema viewers at night

Bookshelves

Area where the hardcopy summary of the topics available on film are stored.

Constructed out of Supawood with PG Bison Laminates.

Steel mesh doors that are locked at night when doors form courtyard are unlocked.

Sliding Doors

Multiwall Polycarbonate sheeting with aluminium frames the Henderson Sliding Door Gear -Straight Sliding Pacer

Glass tophung system

Lift

Kone' Lift. Stainless Steel Lift with glazing. Suspended in a steel structure

Wheelchair accessible

Locker Room

Lockers made of Supawood with PG Bison Laminates with steel mesh doors to allow for transparency.

Foyer Area

Televisons

Suspended 32" LCD Monitors LG20LC1R

Ottomans

Moveable ottomans allows the space to function as a group disscussion area or as a waiting area for the auditorium

9.3.1. Individual Viewing Stations

Description

The space needs to allow privacy for the viewer without isolating them from the facility
The space needs to be adjustable to suit the individuals needs.

Function

The viewing station allows the user to research their chosen topic through the watching of films. The station allows the user to make notes while watching using the play, rewind etc.

Area

40.5m² in total

Lighting

Each station controls own lighting through the Windows Based Control Panel on the wall
Downlighters controlled by the librarian situated along the central axis of the two facilities

Facilities Required

LCD

32" LCD Monitors LG20LC1R

Wall Mount

Attached to steel structure with Ergo Mounts EMX100 LCD wall mount

Sound Domes

20" Diameter Sound Dome Model 7052 with 514mm PETG white polymer dome

Control Panel

9" Windows based Control Panel Touch Screen allows user to control stop/start/rewind etc. as well as the dimmer lighting system. Attached to steel structure under the LCD screen

Walling

Makrolon Multiwall 10mm system in 'Opal'

Sheeting in an aluminium framing supported by steel structure of the mezzanine structure

Sliding Screens

Sliding Door covered in Milliken Carpet 162. Orange Blaze on the Henderson Sliding Door Gear -Straight Sliding Pacer (tophung system)

Countertop

Adjustable countertop level at two demarkated heights

Wheelchair/ Children Countertop Requirements - 690mm height (Adler 1999. 2-20)

Higher countertop Requirements - 710mm height (Adler 1999. 2-7)

Adjustable countertop lightweight and easily removed in and out of support

PG Bison MDF Board with PG Bison Laminates in stripes over the counter

9.3.2. Group Viewing Booths Description

The space allows for a varying amount of viewers to view films together and discuss the related topics in a more private area

Function

Group viewing stations allow groups of two to eight viewers in a station

Area

6m² in total

Lighting

Each station controls own lighting through the Windows Based Control Panel on the wall
Downlighters controlled by the librarian situated along the central axis of the two facilities

Facilities Required

Projectors

Rear projectors attached to the ceiling

Glass- Vu Film

Glass Vu3 GV3F adhesive film attaches to the inside of the Polycarbonate sheeting turning the panel into a display device.

Seating

Carpetted stairs in bigger station in Milliken Carpet 162. Orange Blaze
Comfort Creations chairs in smaller stations
Wooden Benches outside for quick waiting area. Needs to handle outdoor conditions

Sound

Earphones positioned in convenient area for up to listeners. Earphones physically attached to station to avoid theft.

Sliding Screens

10mm thick Multiwall Polycarbonate sheeting in 'Steel' in an aluminium frame is attached to the upper mezzanine level through the Henderson Sliding Door Gear -Straight Sliding Pacer Glass tophung system

Wooden Sliding Screens

Luxalon Sun Louvre System: type sliding screens

(www.luxalon.com)

For privacy and security

Provided with a locking mechanism

Control Panel

9" Windows based Control Panel Touch Screen allows user to control stop/start/rewind etc. as well as the dimmer lighting system. Attached to steel structure

Flooring

Timber decking with slite gaps between for rainwater outside area

Timber Flooring inside

9.1.3. The Newtown Mining Museum
Description

Walk through museum that displays the history related to mining in Johannesburg and Newtown through film. Directors given an opportunity to have their work displayed to the public
The museum is left as it is allowing users to experience the hostels as they were in the past, excepting for the inclusion of the needed technology to display the films

Function

Allows viewers a quick educational journey while en-route to another facility within Newtown

Area

210m²

Lighting and Ventilation

The museum is left as it is allowing users to experience the hostels as they were in the past.

Facilities Required

Projectors

Rear projectors attached to the ceiling

Glass- Vu Film

Glass Vu3 GV3F adhesive film attaches to the inside of the Polycarbonate sheeting that is hung from the truss system turning the wall into a display device.

Sound Domes

30" Diameter Sound Dome Model 7052 with 514mm PETG Translucent polymer dome

9.3.3. Exhibition Managers Office Space

Description

Open office area situated on the one side of the existing mezzanine deck

Mezzanine level is divided up into three spaces

Function

Open area to allow manager to form part of exhibition and have control over the activities below

Office space for the manager of the multifunctional exhibition space

Three spaces allow for the open offices of the manager, the receptionist and a storage space inbetween the two office spaces

Area

38.7m²

Lighting and Ventilation

Pendant lighting is suspended from the existing truss system over the desks

Facilities Required

Furniture

Storage facility for filing in the form of a filing cabinet

Office furniture desks for both the receptionist and the managers open office

Countertop Requirements - 710mm height (Adler 1999. 2-7)

Electric Connection points in the countertop for laptops to plug into

Comfortable chairs for the receptionist and the manager from Comfort Creations

Office Dividers

Makrolon CS UV Profiled Polycarbonat Sheet in Knyser Green.

Greca Profile

Sheeting in aluminium Framing

Allows privacy while not being isolated from the exhibition area

Staff area

Description

Open space acting as a relaxation room for the use of the staff.

Can function as a meeting room for the librarian and teachers discussing class outings and required topics

Function

Meeting room for exhibition manager with artists in forthcoming exhibitions

Meeting room for exhibition manager with artists in forthcoming exhibitions

Furniture must be moveable to accommodate the all meetings requirements

Area

38.7m²

Lighting

Pendant lighting over the countertop shelving area

faciliteise Required

Informal loungers for relaxation

Group meeting tables that can be placed together for larger meetings

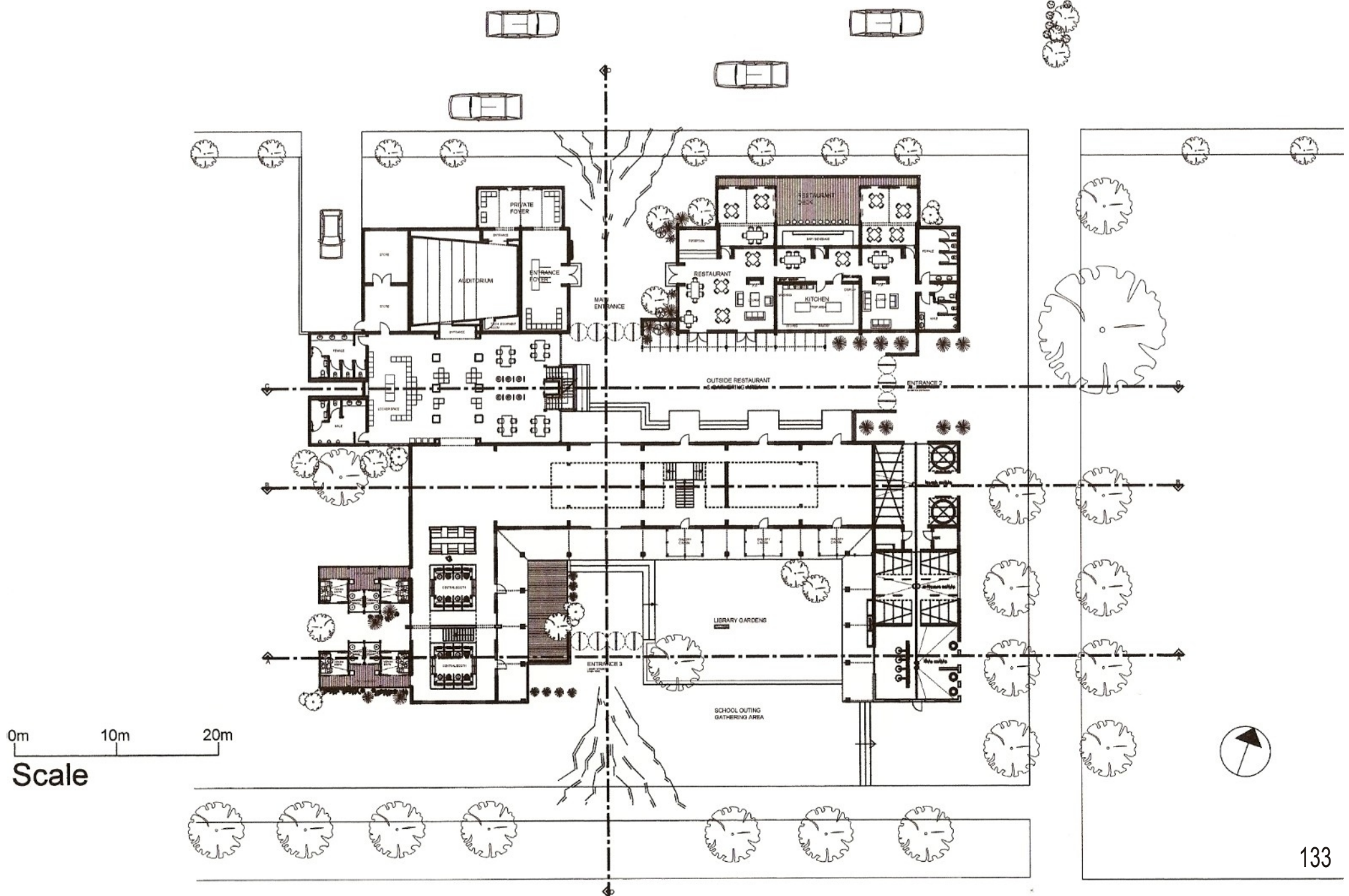
Stackable chairs

Countertop used as serving counter

PG Bison Marine MDF Board with PG Bison Laminates in stripes over the counter

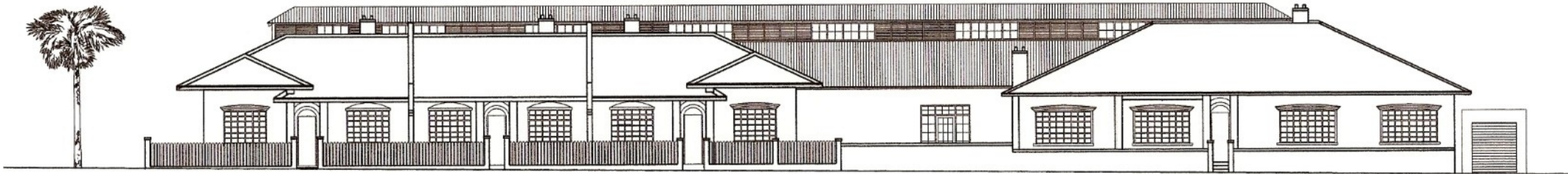
9.1.2. Café and Bar Description	Commercial aspect on the site drawing in clients onto the site Can function independently Facilities are used to serve the needs of the facility in providing needed refreshments/snacks for staff and meetings etc
Function	Café during the day Bar area at night Can be rented out by companies for functions
Area	49.23m ²
Lighting and Ventilation	Pendant Lighting over the Reception countertop and Bar countertop Downlighters found throughout the rest of the area
Facilities	
Kitchen	Food is not prepared on site therefore needed areas within the kitchen are washing area, fridges, stove area, pantry and display area
Toilets	Male and Female Toilets requirements for the users of the space are three W/C's in the female bathroom one W/C in the male bathroom with two Urinals One disabled toilet is used for both sexes
Bar area	
Sliding Screens	Luxalon Sun Louvre System: type sliding screens Provided with a locking mechanism Moveable bar stools that can handle outdoor conditions
Additional rooms	
Projectors	Rear projectors attached to a track system attached to a track system on the ceiling
Glass- Vu Film	Glass Vu3 GV3F adhesive film attaches to the inside of the Polycarbonate sheeting turning the panel into a display device.
Sliding Screens	Multiwall Polycarbonate sheeting in 'Opal' with aluminium frames the Henderson Sliding Door Gear -Straight Sliding Pac Glass tophung system
Furniture	Tables and chairs moveable to suit the users requirements. Chairs from Sean Williams Outside tables and chairs to be able to handle outdoor conditions Large Umbrellas that are easily opened up and closed to be able to handle outdoor conditions
Receptionist Countertop	Receptionist Requirements - 710mm height (Adler 1999. 2-7) PG Bison MDF Board Plywood with PG Bison Laminates in stripes over the counter

10. TECHNICAL DRAWINGS





3. TECHNICAL DRAWINGS



NORTH ELEVATION
(OLD)

0m 10m
SCALE

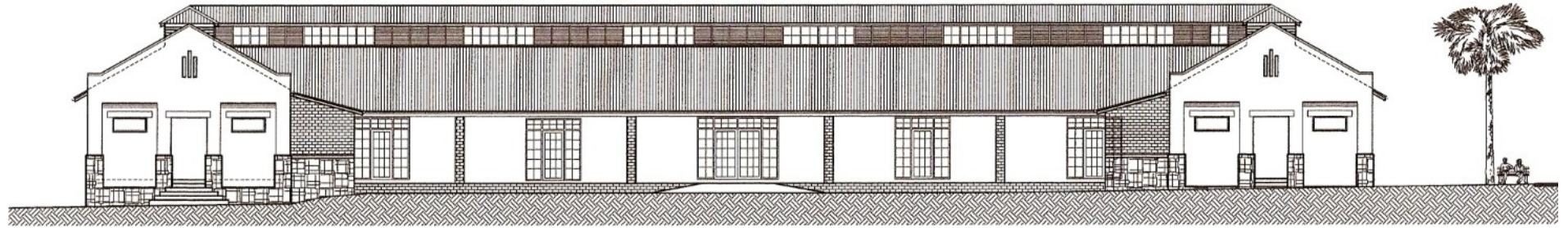


NORTH ELEVATION
(NEW)

0m 10m
SCALE

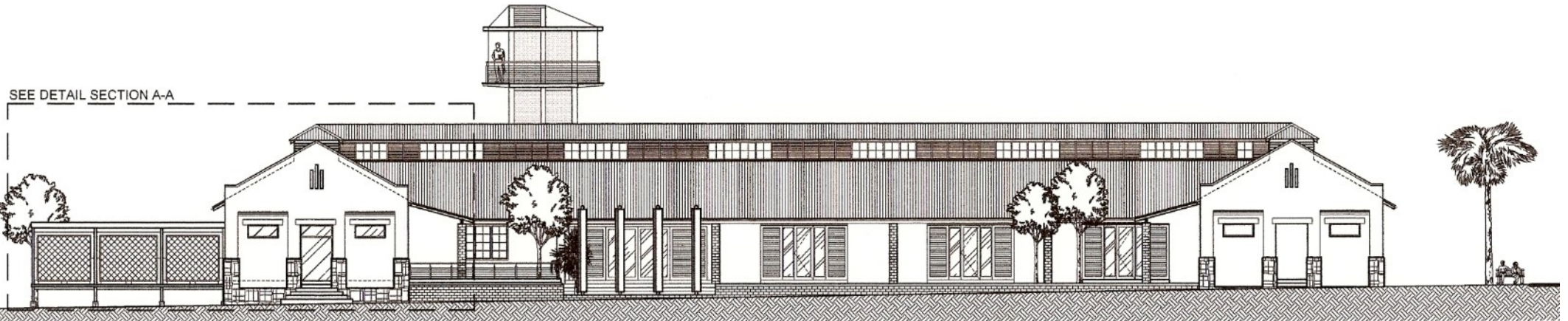


10. TECHNICAL DRAWINGS



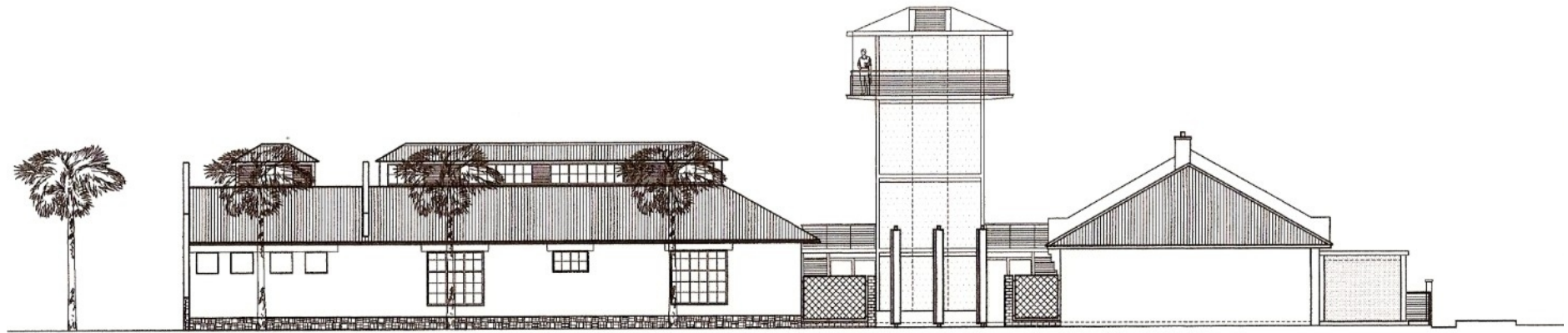
SOUTH ELEVATION
(OLD)

0m 10m
SCALE



SOUTH ELEVATION
(NEW)

0m 10m
SCALE

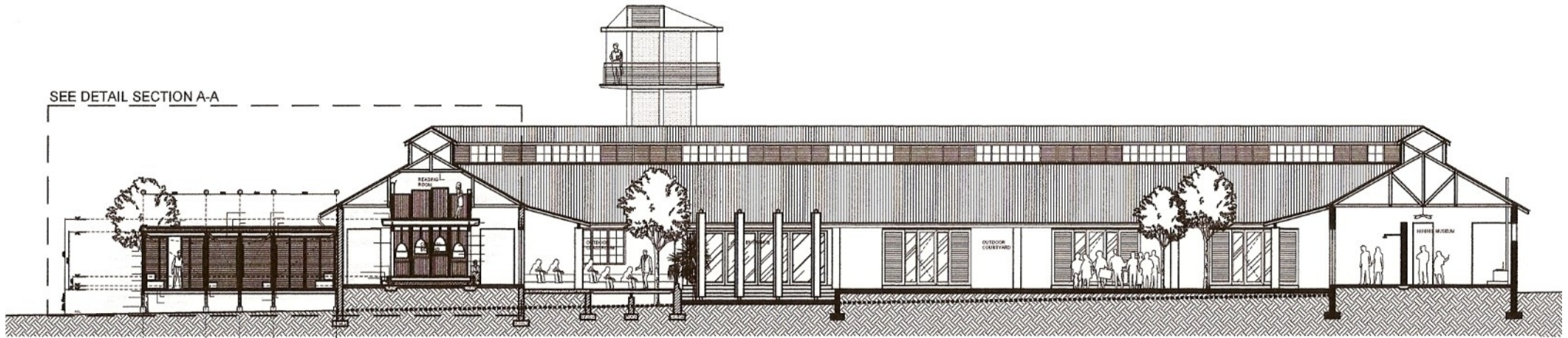


EAST ELEVATION
(NEW)

0m 10m
SCALE

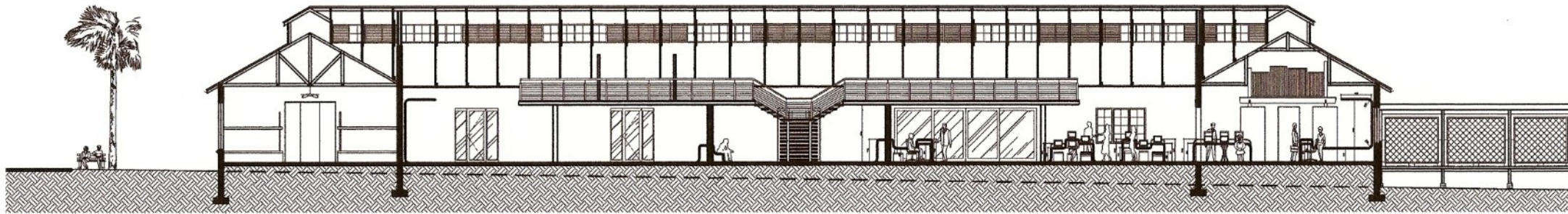


10. TECHNICAL DRAWINGS



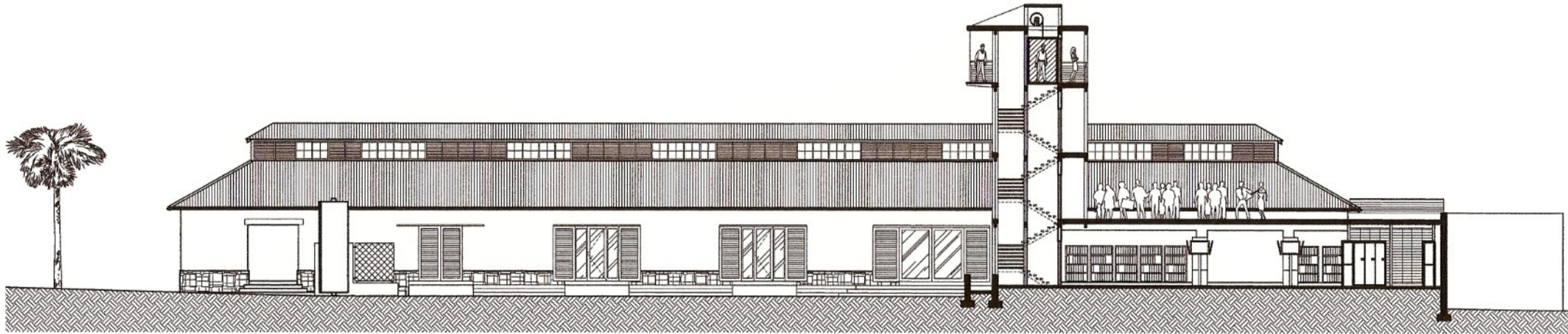
SECTION A-A

0m 10m
SCALE



SECTION B-B

0m 10m
SCALE



SECTION C-C

0m 10m
SCALE