

Supplementary material

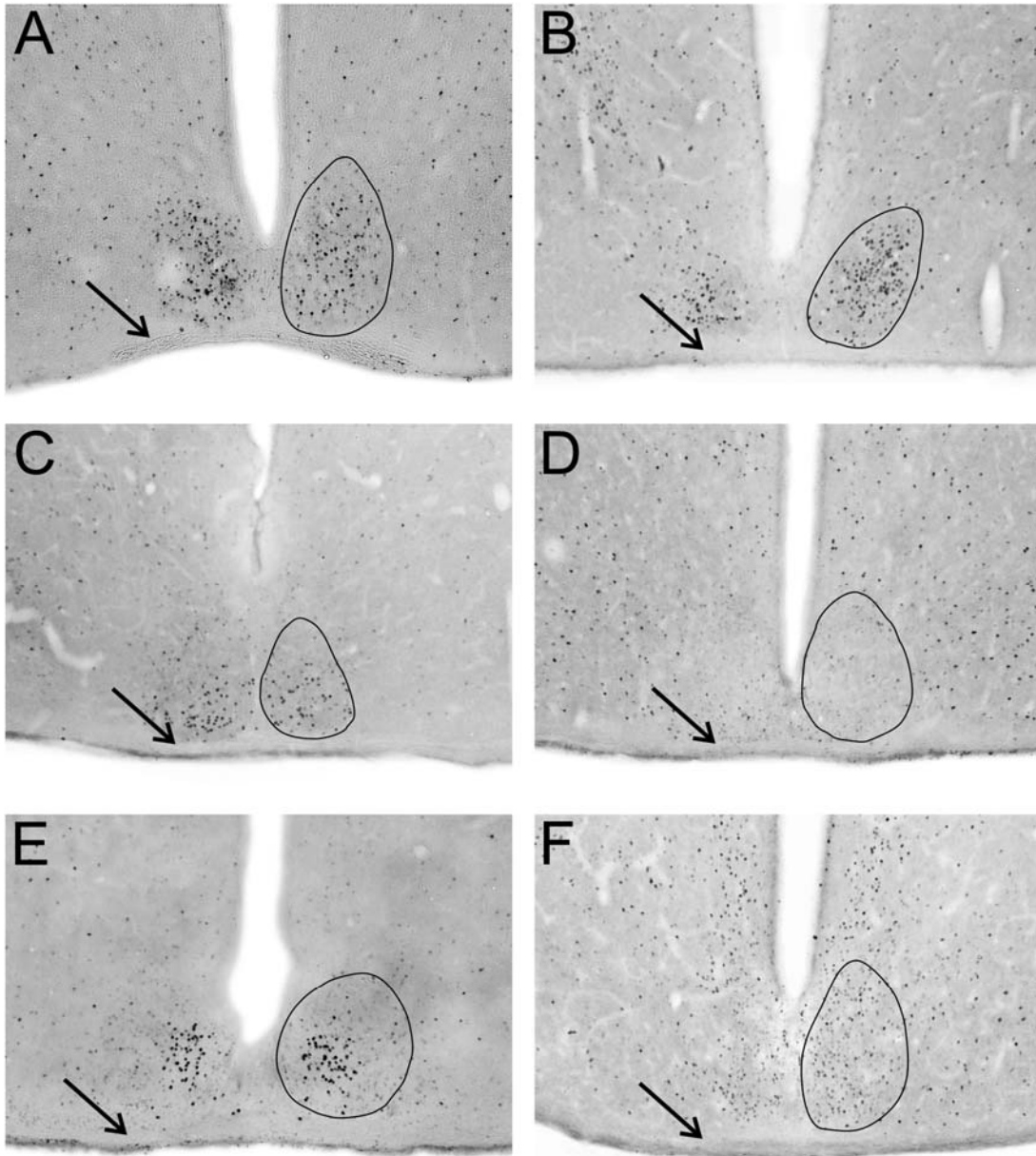


Figure S1: Brain sections of African mole-rats showing the SCN (right side encircled), and the thin optic tract (arrow). A: *Georychus capensis*, B: *Cryptomys hottentotus hottentotus*, C: *Cryptomys hottentotus pretoriae*, D: *Fukomys darlingi*, E: *Fukomys damarensis*, F: *Heterocephalus glaber*