



**University of Pretoria**  
*Department of Economics Working Paper Series*

## **South Africa's Wood Export Potential Using a Gravity Model**

### **Approach**

Joel Hinaunye Eita

University of Pretoria

André C. Jordaan

University of Pretoria

Working Paper: 2007-23

October 2007

---

Department of Economics

University of Pretoria

0002, Pretoria

South Africa

Tel: +27 12 420 2413

Fax: +27 12 362 5207

**<http://www.up.ac.za/up/web/en/academic/economics/index.html>**

**SOUTH AFRICA'S WOOD EXPORT POTENTIAL USING A GRAVITY  
MODEL APPROACH**

Andre C. Jordaan  
Investment and Trade Policy Centre  
Department of Economics  
University of Pretoria  
0002 PRETTORIA  
Tel: +27 12 420 2413, Fax: +27 12 3625207  
Email: [andre.jordaan@up.ac.za](mailto:andre.jordaan@up.ac.za)

Joel Hinaunye Eita  
Investment and Trade Policy Centre  
Department of Economics  
University of Pretoria  
0002 PRETTORIA  
Tel: +27 12 420 2413, Fax: +27 12 3625207  
Email: [hinaeita@yahoo.co.uk](mailto:hinaeita@yahoo.co.uk)

## ABSTRACT

Under the Accelerated Shared Growth Initiative for South Africa (ASGISA), the South African government identified priority sectors that need to be promoted and developed in order to accelerate growth and reduce unemployment and poverty by the year 2014. Among these, the wood sector was identified as a priority sector that needs to be developed for this purpose. The development of this sector may contribute towards achieving this objective by higher levels of economic participation and income generation. This paper analyses the determinants of exports of wood and articles of wood using a gravity model approach. It further investigates whether there is unexploited trade potential between South Africa and its trading partners within this sector. The analysis has shown that there is unexploited trade potential among some of South Africa's trading partners which could stimulate growth to alleviate unemployment and poverty.

*JEL Classification:* F100, F170, C230

## 1. INTRODUCTION

South Africa adopted an export led growth strategy, known as the Growth Employment and Redistribution (GEAR) strategy in 1996 (Naude, Oostendorp and Serumaga-Zake, 2005: 1). Various measures were introduced under this strategy in 1996 in order to promote exports. In 2005, under the Accelerated Shared Growth Initiatives – South Africa (ASGISA) the South African government identified priority sectors that need to be developed and promoted in order to accelerate growth and halve poverty by 2014. Among these, the wood sector was identified as a priority sector that needs to be developed for this purpose (The Presidency Republic of South Africa, 2006).

Although the wood sector accounted for only 1.3 percent of total exports and 0.2 percent of GDP for the period 1997 to 2004, its development and promotion may contribute towards achieving the objective of halving poverty and reducing unemployment by means of high levels of economic participation and income generation. Given its expected significance and role in the South African economy, it is important to determine its trade potential between South Africa and its trading partners. A useful tool in determining the trade or export potential of a country is the gravity model. The model has its foundations in physical sciences and had proven to be very important in the analysis of bilateral trade flows. Tinbergen (1962) and Poyhonen (1963) pioneered the idea of explaining trade flows in analogy to Newton's law of gravity by the attraction of two countries' masses, weakened by distance between them and enforced by preferential trade agreements they belong to. The masses of countries are measured by GDP or population

and distance between countries measures transport costs. As in physical sciences, the bigger and the closer the units are to each other, the stronger the attraction. The comparison with gravity derives from GDP being a proxy for economic mass and distance as a proxy for resistance.

The gravity model is used to analyse the relationship between volume and direction of international trade and the formation of regional trade agreements where members are in different stages of development. The basic gravity model is augmented with a number of variables to test whether they are relevant in explaining trade between countries (Martinez-Zarzoso and Nowak-Lehmann, 2003). These variables include GDP, distance, infrastructure, differences in per capita income and exchange rates.

In light of the above, the objective of this paper is to analyse the factors determining exports of wood and articles of wood, wood charcoal (H44) using a gravity model approach. The paper then investigates whether there is any unexploited trade potential between South Africa and its trading partners within this sector. The rest of the paper is organised as follows. Section 2 discusses the gravity model. Section 3 discusses the estimation methodology, while Section 4 presents univariate characteristics of the data. The estimation results for the gravity model are presented in Section 5 while Section 6 discusses potential trade. The conclusion is provided in section 7.

## 2. THE GRAVITY MODEL

Tinbergen (1962) and Poyhonen (1963) were the first to apply the gravity model to international trade in the early 1960s. The model has been used in the latter half of the nineteenth century to explain migration and other social flows in terms of gravitational forces of human interaction. As in physical science, the bigger and the closer the units are to each other, the stronger the attraction. The analogy with gravity results from GDP being a proxy for economic mass and distance as a proxy for resistance. Although the gravity model performed very well in analysing trade flows in the 1960s, its strong theoretical foundations were not produced until the end of the 1970s. This led to many studies to modify the original Newtonian gravity equation. The works of Anderson (1979) and Bergstrand (1985, 1989) made it clear that the gravity model is a good representation irrespective of the structure of product markets. Bergstrand (1985, 1989) included the population size, while Oguledo and Macphee (1994) included a measure of the price variable.

In an attempt to answer criticisms that the theoretical foundation of the gravity model was weak, Oguledo and Macphee (1994) derived the gravity equation from the linear expenditure system. Their analysis assumed a weakly separable utility function from which a linear expenditure function could be derived.

The basic gravity equation explains the size of exports from country  $i$  to country  $j$  by three factors. The first indicates the total potential supply of the exporting country ( $i$ ), and

the second one indicates the potential demand of the importing country ( $j$ ), and the third includes factors which represents the resistance to trade flow between countries. In its basic form, exports from country  $i$  to country  $j$  are determined by their economic sizes (GDP), population, geographical distances and a set of dummies which incorporate some kind of institutional characteristics common to specific flows. The gravity model is generally specified as (Martinez-Zarzoso and Nowak-Lehmann, 2003: 296; Jakab, Kovacs and Oszlay, 2001: 280; Breuss and Egger, 1999: 83):

$$\ln X_{ij} = \beta_0 + \beta_1 \ln Y_i + \beta_2 \ln Y_j + \beta_3 \ln POP_i + \beta_4 \ln POP_j + \beta_5 \ln DIS_{ij} + \beta_6 \ln A_{ij} + u_{ij} \quad (1)$$

where  $X_{ij}$  is exports of goods from country  $i$  to country  $j$ ,  $Y_i$  and  $Y_j$  are the GDP of the exporter and importer,  $POP_i$  and  $POP_j$  are the populations of the exporter and importer,  $DIST_{ij}$  is the distance in kilometres between the two countries,  $A_{ij}$  represents any factor that influence trade between the countries, and  $u_{ij}$  is the error term.

A high level of GDP indicates a high level of production in the exporting country and can be interpreted as a proxy for the range of product varieties available, which increases the availability of exports. It represents potential supply of exports. The importer's GDP represents potential demand for imports. A high level of GDP or income in the importing country suggests high imports. The coefficients  $\beta_1$  and  $\beta_2$  are expected to have positive signs. The population variables can influence export in two ways. A large population indicates a large domestic market and higher degree of self-sufficiency and less need to

trade (Nilsson, 2000). Large populations also encourages division of labour and this means that there will be economies of scale in production, and opportunities to trade with a variety of goods. For the exporting country, a large population can increase or decrease trade depending on whether the country exports more when it is large or whether the large country export less than the smaller one. For the importing country a large population can also increase or decrease trade for the same reasons. Thus, the effects of population for both the exporting and importing countries cannot be assigned *a priori*. That means  $\beta_3$  and  $\beta_4$  are expected to have ambiguous signs (Oguledo and MacPhee, 1994). The coefficient of distance,  $\beta_5$  is expected to be negative because it is a measure of transport costs.

This paper introduces dummy variables (included in  $A_{ij}$ ) to represent various regional trade agreements and English language. The dummy variables take the value one for membership of trade agreements or where English is the official language, and zero otherwise. The introduction of dummy variables modifies Equation (1) as:

$$\ln X_{ij} = \alpha_{ij} + \beta_1 \ln Y_{it} + \beta_2 \ln Y_{jt} + \beta_3 \ln POP_{it} + \beta_4 \ln POP_{jt} + \beta_5 \ln DIS_{ij} + \beta_6 EU + \beta_7 LANG + \beta_8 NAFTA + \beta_9 SADC + u_{ijt} \quad (2)$$

where  $\alpha_{ij}$  is the individual effects, EU is the dummy variable for membership of the European Union, LANG is for countries with a common language (in this case English), NAFTA is the dummy variable for membership of North America Free Trade Agreement, and SADC is the dummy variable for membership of the Southern African

Development Community. Membership of regional trade groupings can cause a rise in trade (Nilsson, 2000; Carrere, 2006; Jakab, Kovács and Oszlay, 2001). Common language may also be expected to promote trade. Their coefficients are expected to have positive signs.

### **3. ESTIMATION METHODOLOGY**

Panel data involves different models that can be estimated. These are pooled, fixed effects and random effects. Since the regressions include individual effects, it is important to decide whether they are random or fixed. When estimating the trade flows between a randomly drawn sample of trading partners from a large population a random effects is more appropriate, while fixed effects model is more appropriate when estimating the flows of trade between an ex ante predetermined selection of countries (Egger, 2006: 26; Martinez-Zarzoso and Nowak-Lehmann, 2003: 299). This paper analyses the trade between South Africa and 68 main trading partners, and therefore fixed effects will be a better model than the random effects model. The 68 main trading partners were selected based on the trade statistics of wood and articles of wood, wood charcoal for the period 1997 to 2004. The Hausman test statistic is applied to check further whether the fixed effects model is better than the random effects model. If the null hypothesis of no correlation between the individual or fixed effects and regressors is rejected, then fixed effects model is better than the random effects model.

Fixed effects model has a problem in the sense that variables that do not change over time cannot be estimated directly because inherent transformation wipes out such variables. To solve this problem, these variables can be estimated in a second step by estimating another regression with the individual effects as the dependent variable and distance and dummy variables as independent variables. This is specified as follows:

$$IE_{ij} = \eta_0 + \eta_1 DIS_{ij} + \eta_2 LANG + \eta_3 EU + \eta_4 NAFTA + \eta_5 SADC + \mu_{ij} \quad (3)$$

where  $IE_{ij}$  is individual effects, and other variables are as defined before.

#### **4. UNIVARIATE CHARACTERISTICS OF VARIABLES**

Before the estimation of Equation (2) the paper analysed the univariate characteristics of the variables which entails panel unit root tests. This is the first step in determining a potentially cointegrated relationship between the variables. If all variables are stationary, then the traditional estimation can be used to estimate the relationship between variables. The detailed data source and description are provided in the Appendix. If they contain a unit root or are nonstationary, a cointegration test should be performed. There are three main different types of panel unit root tests. The first test is that of Levin, Lin and Chu (2002) and the second is Hadri (2000). These tests assume that the autoregressive parameters are common across cross sections. Levin, Lin and Chu (LLC) uses the null hypothesis of a unit root while Hadri uses the null of no unit root. The third panel unit root test allows the autoregressive parameters to vary across cross sections as well as for

individual unit root processes. The test was developed by Im, Pesaran and Shin (2003) and is referred to as IPS. It combines individual countries' unit root tests in order to come up with the result which is specific to the panel. According to Yigit and Straus (2003: 309), IPS has more power than the single equation Augmented Dickey Fuller (ADF) by averaging N independent ADF regressions. The specifications of the ADF tests can include an intercept but no trend or can include an intercept and a time trend. Under the IPS, the null hypothesis is that all series contain a unit root and the alternative hypothesis is that at least one series in the panel contain a unit root. IPS is a one-tailed or lower-tailed test and is based on  $N(0,1)$  distribution. This study applies the IPS and LLC tests and the results are presented in Table 1.

**Table 1. Panel unit root test**

	LLC	IPS
Export	-13.067(0.000)***	-3.531(0.000)***
Importer's GDP	-26.097(0.000)***	-1.545 (0.061)*
South Africa's GDP	-2.542(0.006)***	-1.569 (0.058)*
Importer's population	-15.933(0.000)***	-1.542 (0.062)*
South Africa's population	-87.423 (0.000)***	-10.735 (0.000)***

Notes: \*\*\*/\*\*/\* denotes rejection of the at 1%/5%/10% level.

Probabilities are in parenthesis.

Table 1 shows that both the IPS and LLC reject the null of unit root for all variables. That means all variables are stationary and this implies that cointegration test is not required and Equation (2) can be estimated using the ordinary least square method.

## **5. ESTIMATION RESULTS**

Table 2 presents the results for the pooled, fixed and random effects models. The pooled panel data model results are in the second column of Table 2. The pooled model has problems because it does not allow for heterogeneity of countries and country specific effects are not estimated. It assumes that all countries in the model are homogenous.

The results of the fixed effects model are presented in column 3. The fixed effects model estimates country specific effects and introduces heterogeneity. To check the poolability of the data, the F-test statistic is performed. The pooled model is restricted and assumes a single intercept and same parameters over time and across countries. The unrestricted model (fixed effects or random) allows the intercept and other parameters to differ across countries. The results in Table 2 show that the null hypothesis of equality of the individual effects or homogeneity for all countries is rejected. This means that a model with individual country effects is better than the pooled model.

The random effects model results are in Column 4. This model acknowledges heterogeneity of countries. It is different from the fixed effects because it assumes that the effects are generated by a specific distribution. It also assumes differences in the

cross-section or countries but does not model each effect separately. This prevents the loss of degrees of freedom which happens with the fixed effect. The null of no countries heterogeneity is again rejected in favour of random effects specification.

To test the null hypothesis that the regressors and individual effects are not correlated and discriminate between fixed effects model and random effects model, the Hausman test specification is used. If the null hypothesis is accepted the random effects model is a better model, but if it is rejected the fixed effects model will be preferred. The results in Table 2 show that the Hausman specification test rejects the null hypothesis and this means that country specific effects are correlated with regressors. This suggests that the fixed effects model is preferred.

**Table 2. Estimation results**

<b>Variables</b>	<b>Pooled model</b>	<b>Fixed effects model</b>	<b>Random effects model</b>
Constant	-78.223 (-1.695)*	-47.073 (-1.691)*	-66.235 (-2.414)***
Importer's GDP	0.757 (9.094)***	2.135 (5.857)***	1.076 (5.911)***
South Africa's GDP	-0.445 (-0.608)	-0.784 (-1.849)*	-0.519 (-1.246)
Importer's population	-0.297 (-4.124)***	-3.398 (-1.792)*	-0.491 (-2.875)***
South Africa's population	5.235 (2.499)***	4.764 (2.470)***	4.718 (3.845)***
Distance in kilometres	-0.384 (-1.344)		-1.008 (-1.469)
EU dummy	-1.283 (-4.857)***		-1.783 (-2.772)***
SADC dummy	1.674 (3.911)***		1.353 (1.268)
NAFTA dummy	-2.954 (-6.165)***		-3.375 (-2.828)***
English language dummy	0.346 (1.793)*		0.322 (0.665)
Adjusted R-squared	0.217	0.748	0.699
F-test		20.279***	
LM test			840.835***
Hausman test		24.47***	

Notes: \*\*\*/\*\*/\* significant at 1%/5%/10% level

The t-statistics are in parentheses

The results of the fixed effects model as shown in Table 2 indicate that an increase in the importer's GDP causes an increase in the exports of South Africa's wood products and this is in line with the theoretical expectations. The coefficient of South Africa's GDP has a negative and significant sign and this is not consistent with the theory. This negative coefficient can be attributed to the fact that the construction sector experienced high growth rates in recent years, and wood products are used mainly in the construction sector. An increase or expansion in the South African construction sector can cause traders to reduce their exports and sell more of their wood products to the local market.

South African population has a significant and positive coefficient on the exports of wood products. This means that South Africa exports more when its population grows because of economies of scale. The importer's population has a negative and statistically significant effect on the exports of wood products. An increase in the importer's population implies that the domestic market (importers market) is large and there is higher degree of self-sufficiency and no need to trade in wood products. The results are as expected by the theory. They are also comparable to those estimated among others, by Eita and Jordaan (2007) and Sapir (1981).

Country specific effects estimates are presented in Table A1 of the Appendix. The country or cross-section specific effects show the effect of factors that are unique to each country but not included in the estimation of the model. They show that trade in wood products between South Africa and its trading partners differ from country to country and

each country is unique. Table A1 shows that there are unique features in some countries that promotes trade in South Africa's exports of wood products to Angola, Benin, Brazil, China, Democratic Republic of the Congo, Comoros, Ethiopia, Germany, Ghana, Guinea, India, Indonesia, Iran, Ivory Coast, Japan, Kenya, South Korea, Madagascar, Malawi, Malaysia, Mali, Mozambique, Nigeria, Pakistan, Philippines, Russia, Senegal, Sri Lanka, Tanzania, Thailand, Turkey, Uganda, USA, Vietnam, Zambia and Zimbabwe (countries with shaded fixed effects). Table A1 also show that there are unobservable country characteristics that discourage South Africa's exports of wood products to Australia, Belgium, Bulgaria, Canada, Congo-Brazzaville, Cyprus, Denmark, France, Gabon, Greece, Hong Kong, Ireland, Israel, Italy, Kuwait, Maldives, Mauritius, Mexico, Netherlands, New Zealand, Norway, Poland, Portugal, Qatar, Saudi Arabia, Seychelles, Singapore, Spain, Sweden, Switzerland, United Arab Emirates, and United Kingdom (countries with negative signs and not shaded). This suggests that an analysis of factors which discourage the exports of South Africa's wood products to countries with negative fixed effects is important for policy makers. This will help to identify constraints in wood trade and promote exports.

The second stage regression includes some factors which may explain the fixed effects in Table A1. Table 3 presents the results of the second stage regression results. Table 3 shows that distance has a negative and insignificant effect on wood export. Membership of the EU and NAFTA is associated with a decrease in wood export, while SADC membership is associated with increase in export. Countries where English is the official language are associated with an increase in South Africa exports of wood products.

**Table 3. Second stage regression: fixed effects regressed on dummies**

<b>Independent Variables</b>	<b>Coefficient (t-statistics)</b>
Constant	1.203 (1.903)*
Distance	-0.056 (-0.779)
English Language	0.275 (12.275)***
EU	-4.283 (-68.512)***
SADC	4.014 (27.854)***
NAFTA	-3.274 (-32.021)***
Adjusted R-squared	0.984

\*\*\*/\*\*/\* significant at 1%/5%/10% level

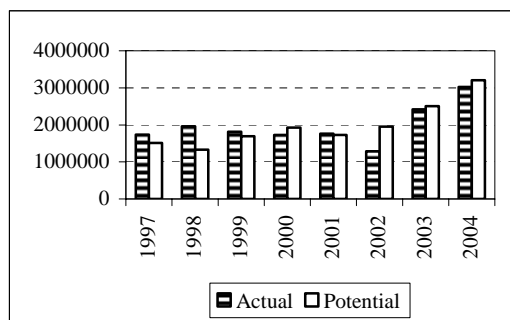
## **6. TRADE POTENTIAL**

The estimated fixed effects of Equation (2) is simulated to determine the within potential exports of wood products. The estimated exports are compared to actual exports in order to see if there is unexploited trade potential. The results are presented in Figure 1. The results shows that among others Belgium, Brazil, Canada, Comoros, Germany, Greece, Hong Kong, Israel, Italy, Ivory Coast, Mauritius, New Zealand, Portugal, Russia, Spain, Tanzania and Vietnam have unexploited trade potential at least from the year 2002 to 2004. For these countries, potential exports exceed actual exports. It is important to promote exports to these countries in order to exploit unexploited trade potential.

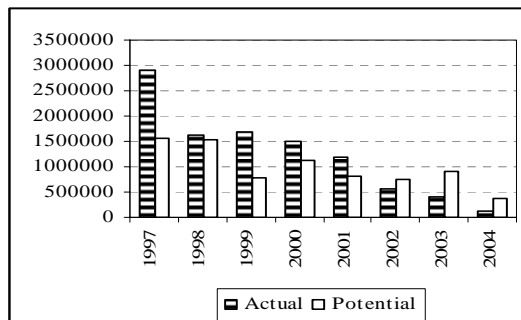
However, a further analysis of each country is important in order to determine and identify possible factors that may inhibit export potential.

**Figure 1. Actual and Potential Exports of wood products (in USA dollars)**

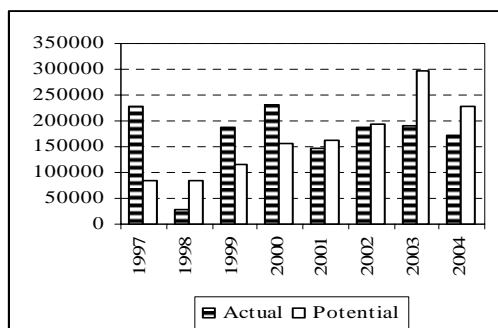
### Belgium



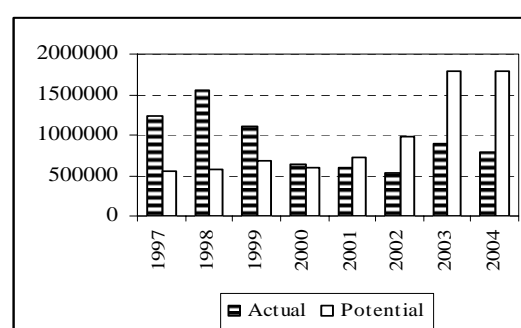
### Brazil



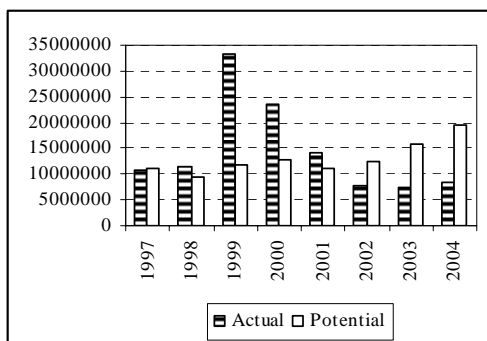
### Canada



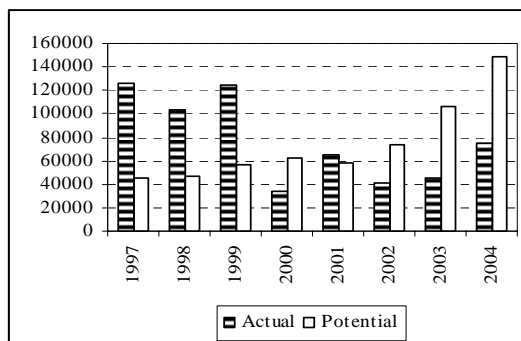
### Comoros



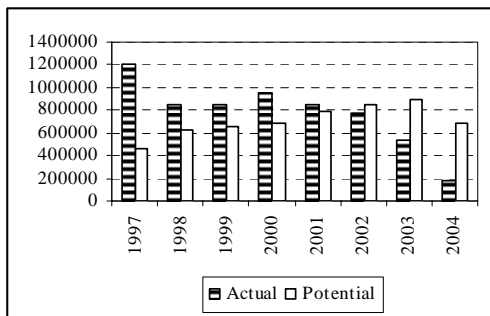
### Germany



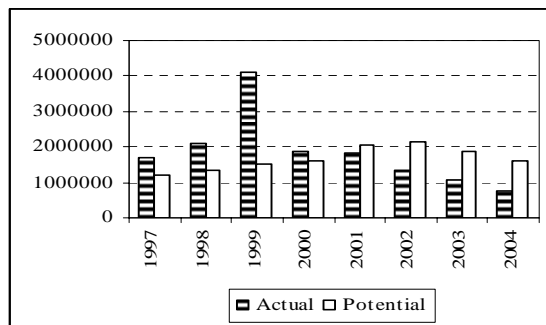
### Greece



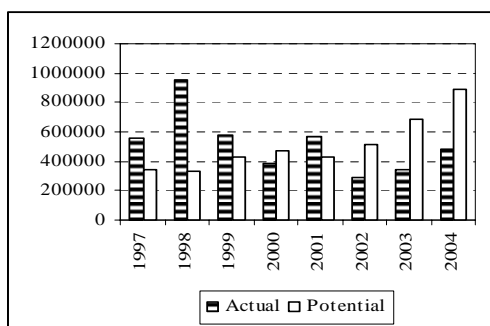
### Hong Kong



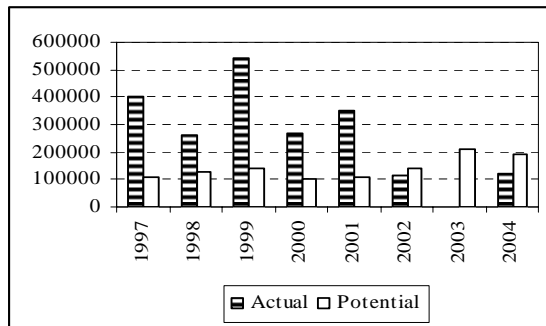
### Israel



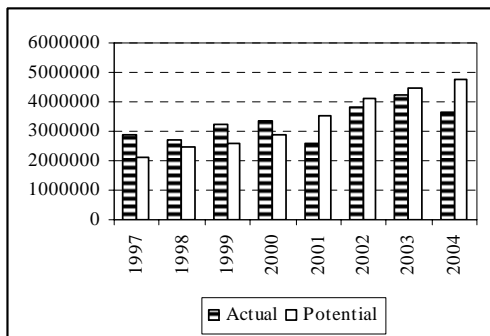
### Italy



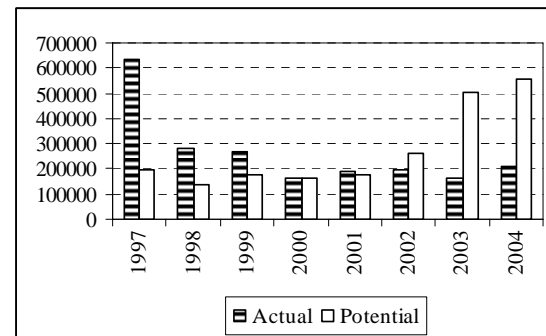
### Ivory Coast



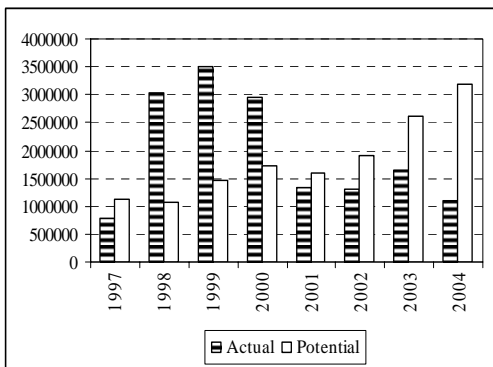
### Mauritius



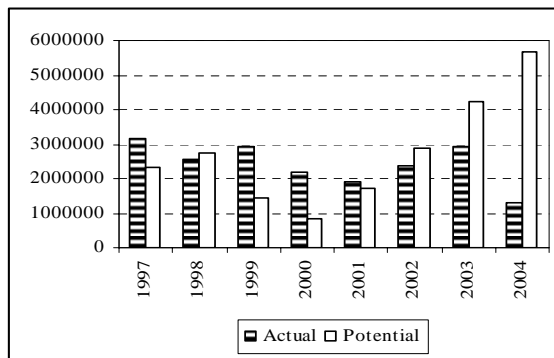
### New Zealand



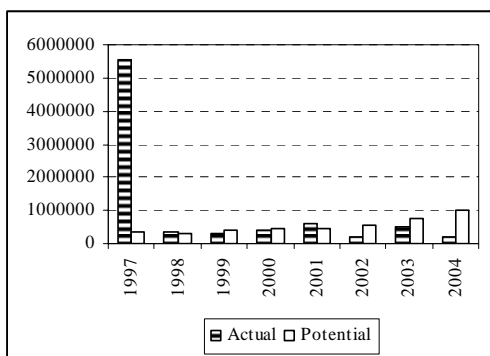
### Portugal



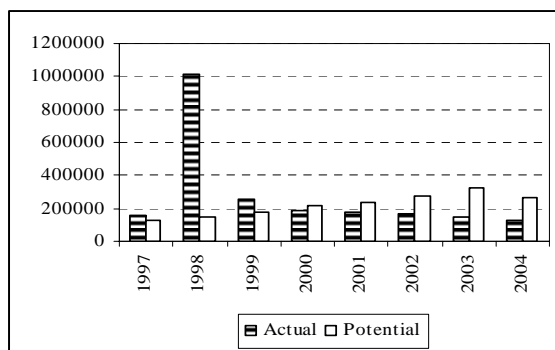
### Russia



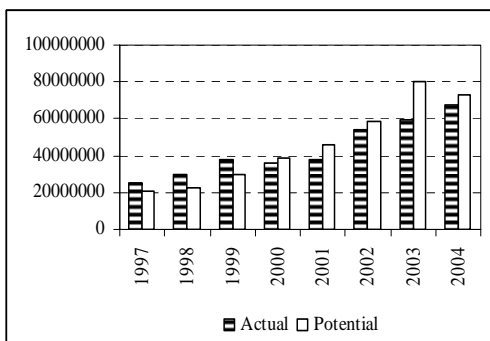
### Spain



### Tanzania



### Vietnam



## 7. CONCLUSION

This study estimated the determinants of South Africa's exports of wood products for the period 1997 to 2004 using a gravity model approach and analyse if there is unexploited trade potential in this sector. The estimation was done for 68 main trading partners in the wood product export industry. The paper found that importer's GDP and South Africa's population has a positive effect on exports of wood products, while South Africa's GDP has a negative impact on the exports of wood products. The negative effect of South Africa's GDP on exports of wood products can be explained by the high current growth of the construction sector in recent years. The importer's population has a negative impact on the exports of wood products, suggesting the trading partners become self sufficient as their populations grow.

Distance has a negative and insignificant effect on the exports of wood products. Membership of NAFTA and EU is associated with a decrease in exports while that of SADC is associated with an increase in exports of wood products. This indicates that not all regional trade arrangements cause an increase in the exports of wood products. South Africa exports more to countries where the official language is English, which suggests that sharing the same language promotes exports of wood products.

The estimated gravity equation was solved to determine if there are potential exports. Determining the potential exports is important especially when the market is not certain. The analysis found that among others, Belgium, Brazil, Canada, Comoros, Germany,

Greece, Hong Kong, Israel, Italy, Ivory Coast, Mauritius, New Zealand, Portugal, Russia, Spain, Tanzania and Vietnam have unexploited trade potential at least from the year 2002 to 2004. These results can serve as a guide to policymakers to ensure that the wood products export potential is exploited in order to accelerate growth. This can contribute to reducing unemployment and halving poverty by the year 2014.

## 7. REFERENCES

Anderson, J.E. (1979) "A theoretical Foundation for the Gravity Equation", *American Economic Review*, 69(1): 106-116.

Bergstrand, J.H. (1985) "The Gravity Equation in International Trade: Some Microeconomic Foundations and Empirical Evidence", *Review of Economics and Statistics*, 67(3): 474-480.

Bergstrand, J.H. (1989) "The Generalised Gravity Equation, Monopolistic Competition and the Factor-Proportions Theory in International Trade", *Review of Economics and Statistics*, 71(1): 143-153.

Breusch, F. and Egger, (1999) "How Reliable are Estimations of East-West Trade Potentials Based on Cross-section Gravity Analyses", *Empirica*, 26(2): 81-99

Carrère, C. (2006) "Revisiting the Effects of Regional Trade Agreements on Trade Flows with Proper Specification of the Gravity Model", *European Economic Review*, 50: 223-247.

Eita, J.H. and Jordaan, A.C. (2007) "South Africa Exports of Metals and Articles of Base Metals: A Gravity Model Approach", *Journal for Studies in Economics and Econometrics*, (forthcoming).

Egger, P. (2000) "A Note on the Proper Econometric Specification of the Gravity Equation", *Economic Letters*, 66: 25-31.

Hadri, K. (2000) “Testing for Stationarity in Heterogeneous Panel Data”, *Econometric Journal*, 3(2): 148-161.

Im, K.S., Pesaran, M.H. and Shin, Y. (2003) “Testing for Unit Roots in Heterogeneous Panels”, *Journal of Econometrics*, 115: 53-74.

Jakab, Z.M. Kovacs, M.A. and Oszlay, A. (2001) “How Far has Regional Integration Advanced?: An Analysis of the Actual and Potential Trade of Three Central and European Countries”, *Journal of Comparative Economics*, 29: 276-292.

Levin, A., Lin, C.F. and Chu, C. (2002): “Unit Roots Tests in Panel Data: Asymptotic and Finite Sample Properties”, *Journal of Econometrics*, 108: 1-24.

Martinez-Zarzoso, I. and Nowak-Lehmann, F. (2003) “Augmented Gravity Model: An Empirical Application to Mercosur-European Union Trade Flows”, *Journal of Applied Economics*, 6(2): 291-316.

Naude, W.A., Oostendorp, R. and Serumaga-Zake, P. (2005) “Determinants of Manufacturing Exports: Results from a Regional Firm-Level Survey in South Africa”, *Journal of Studies in Economics and Econometrics*, 29(2): 108-116.

Nilsson, L. (2000) “Trade Integration and the EU Economic Membership Criteria”, *European Journal of Political Economy*, 16: 807-827.

Oguledo, V.I. and Macphee, C.R. (1994) “Gravity Models: A Reformulation and an Application to Discriminatory Trade Arrangements”, *Applied Economics*, 26: 107-120

Pöyhönen, P. (1963) “A Tentative Model for the Volume of Trade Between Countries”, *Weltwirtschaftliches Archiv*, 90: 93-99.

Presidency Republic of South Africa (2006): *Accelerated and Shared Growth Initiative – South Africa (ASGISA)*. Pretoria: Presidency Republic of South Africa.

Sapir, A. (1981) “Trade Benefits Under EEC Generalised System of Preferences”, *European Economic Review*, 15 (3): 339-355.

Silva, J.M.C and Tenreyro, S. (2006) “The Log of Gravity”, *Review of Economics and Statistics*, 88(4): 641-658.

Strauss, J. and Yigit, T. (2003) “Shortfalls of Panel Unit Root Testing”, *Economic Letters*, 81: 309-313.

Tinbergen, J. (1962) *Shaping the World Economy. Suggestion for an International Economic Policy*, New York.

## APPENDIX

**Table A1. Countries used in the estimation and their specific or fixed effects**

ANGOLA	4.277512
AUSTRALIA	-1.759832
BELGIUM	-3.396118
BENIN	1.566048
BRAZIL	3.735506
BULGARIA	-3.461636
CANADA	-4.412114
CHINA	9.122066
COMOROS	0.733225
CONGO (BRAZZAVILLE)	-2.194640
CYPRUS	-9.570119
DEMOCRATIC REPUBLIC OF THE CONGO	8.060044
DENMARK	-7.815227
ETHIOPIA	6.622581
FRANCE	-2.402649
GABON	-6.740332
GERMANY	1.034608
GHANA	4.829376
GREECE	-5.049289
GUINEA	0.481717
HONG KONG	-4.939638
INDIA	10.23335
INDONESIA	3.770923
IRAN	0.713551
IRELAND	-4.012051
ISRAEL	-3.357495
ITALY	-2.230873
IVORY COAST	1.907295
JAPAN	3.605235
KENYA	5.903516
SOUTH KOREA	0.509349
KUWAIT	-6.364404
MADAGASCAR	3.647955
MALAWI	6.214568
MALAYSIA	0.972934
MALDIVES	-6.292293
MALI	1.874081
MAURITIUS	-1.571173
MEXICO	-2.604841
MOZAMBIQUE	8.333545
NETHERLANDS	-2.567163
NEW ZEALAND	-5.829895
NIGERIA	5.909041

NORWAY	-7.742615
PAKISTAN	4.971071
PHILIPPINES	3.448761
POLAND	-2.508175
PORTUGAL	-1.849117
QATAR	-11.42264
RUSSIA	5.311885
SAUDI ARABIA	-3.655186
SENEGAL	3.968544
SEYCHELLES	-8.152666
SINGAPORE	-4.164348
SPAIN	-2.030450
SRI LANKA	5.280769
SWEDEN	-6.102166
SWITZERLAND	-7.433079
TANZANIA	5.528309
THAILAND	1.248912
TURKEY	2.240178
UGANDA	4.124003
UNITED ARAB EMIRATES	-5.501413
UNITED KINGDOM	-3.225920
UNITED STATES OF AMERICA	0.292842
VIETNAM	10.97242
ZAMBIA	7.460829
ZIMBABWE	1.453015

### Data Description and Sources

The study covers the period 1997 to 2004 using annual data. Sixty eight main trading partners in the wood and articles of wood, wood charcoal (H44) sector were included in the estimation. The data for exports were obtained from Trade and Industrial Policy Strategies (TIPS) website: <http://www.tips.org.za/node/636>. Data for populations are sourced from the World Bank' World Development Indicators. The data on distance were obtained from <http://www.timeanddate.com>, and they are computed as distance in kilometers between capital cities. The English Language dummy variable was sourced from Silva and Tenreyro (2006).