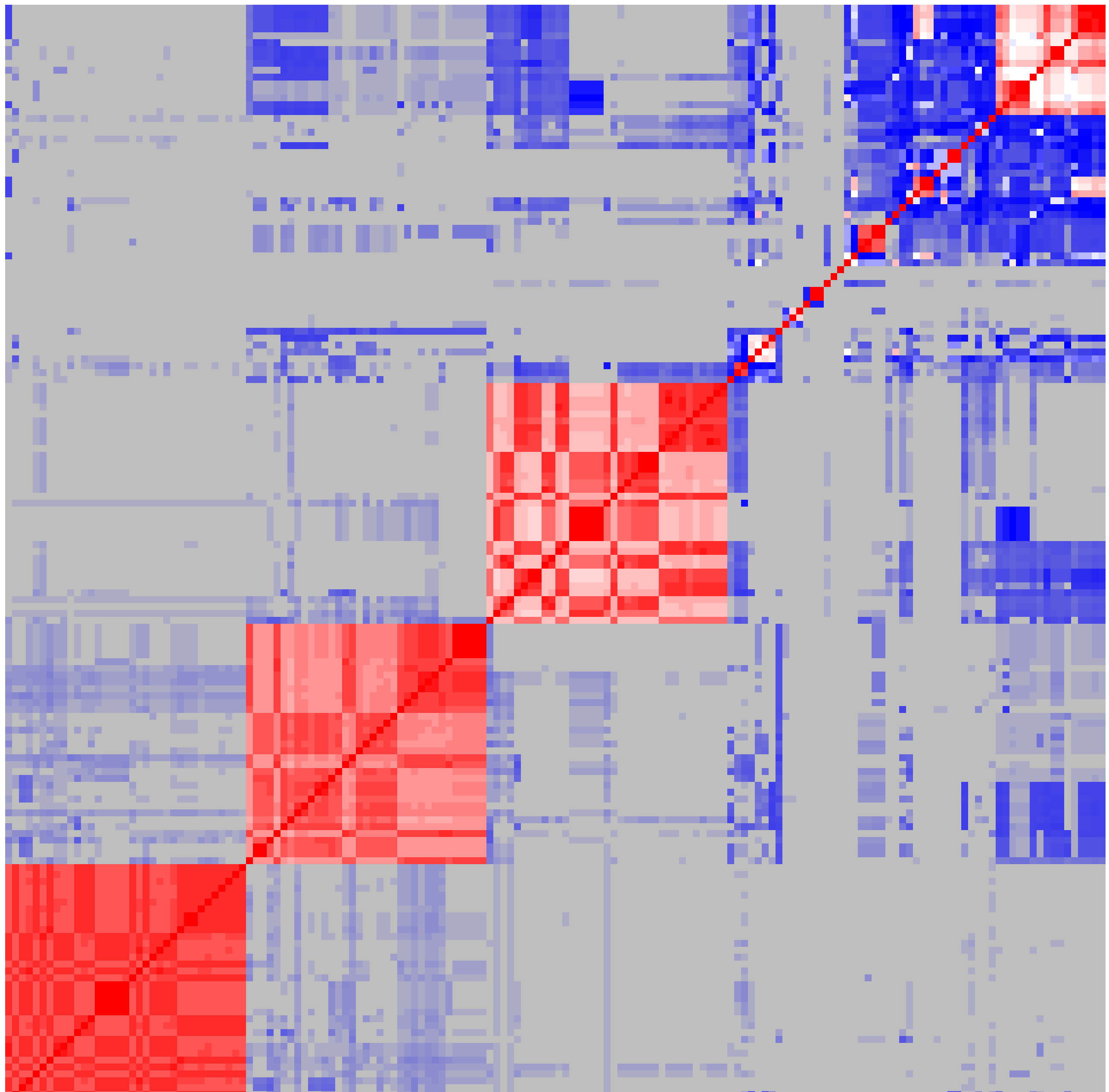
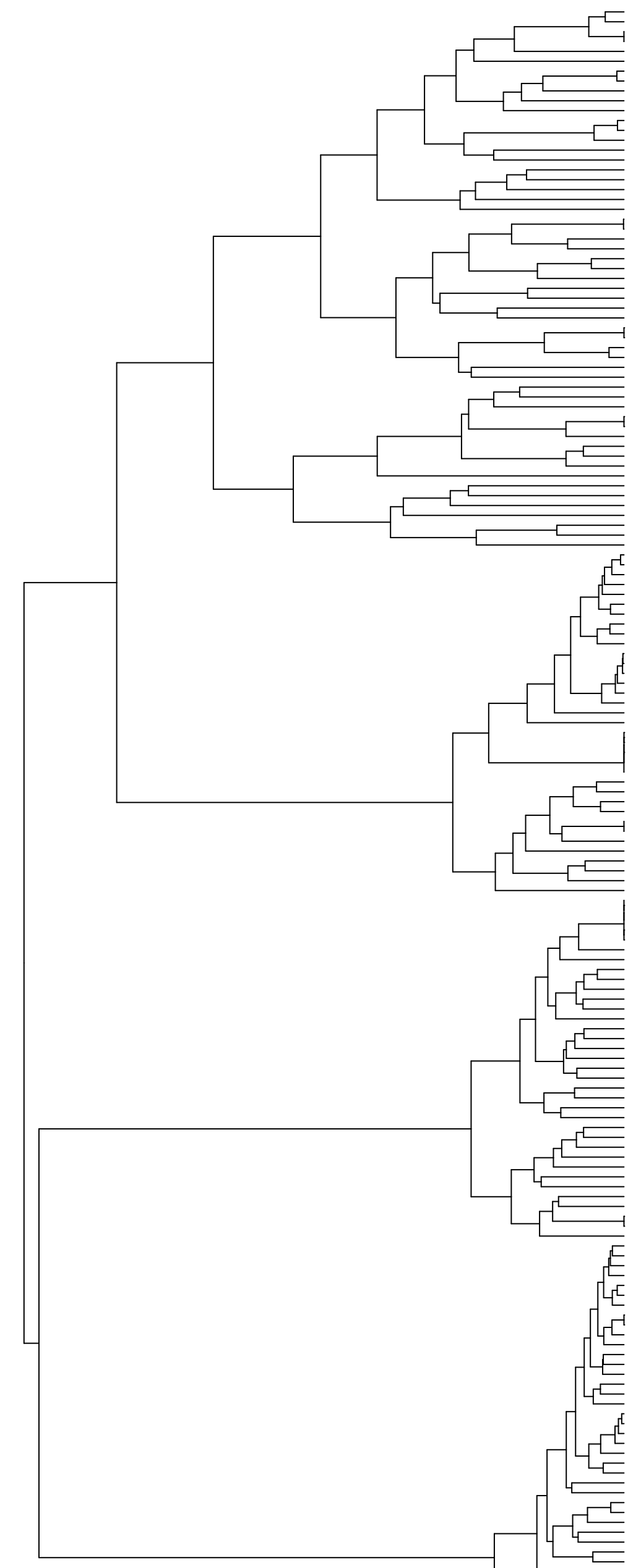
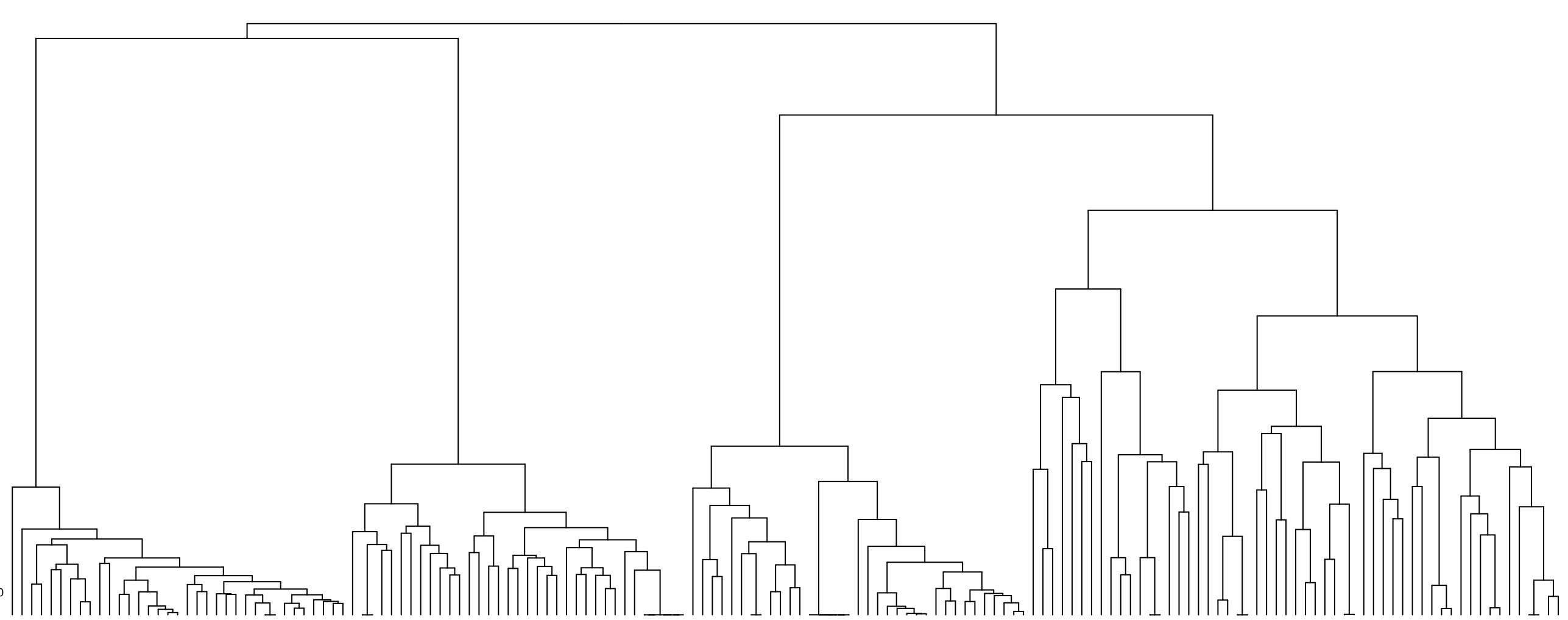
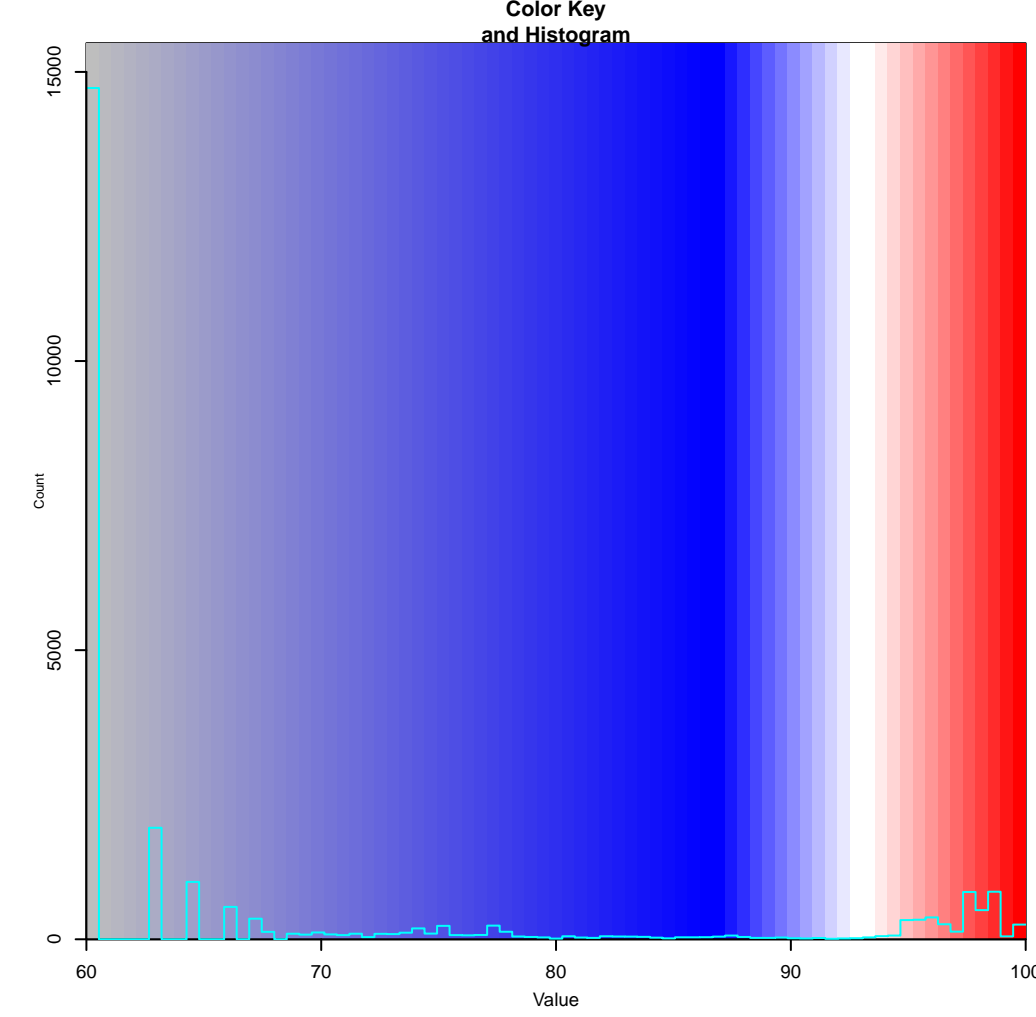


Color Key and Histogram



- SUH1\_chromosome
- X824\_chromosome
- ZJUZ2\_chromosome
- ROT5050421\_chromosome
- DBM\_3797\_chromosome
- DBM\_3797\_pPA\_DBM3797\_1
- DBM\_3797\_pPA\_DBM3797\_2
- DBM\_3797\_pPA\_DBM3797\_3
- DBM\_3797\_pPA\_DBM3797\_4
- DBM\_3797\_pPA\_DBM3797\_5
- DBM\_3797\_pPA\_DBM3797\_6
- DBM\_3797\_pPA\_DBM3797\_7
- DBM\_3797\_pPA\_DBM3797\_8
- DBM\_3797\_pPA\_DBM3797\_9
- DBM\_3797\_pPA\_DBM3797\_10
- DBM\_3797\_pPA\_DBM3797\_11
- DBM\_3797\_pPA\_DBM3797\_12
- DBM\_3797\_pPA\_DBM3797\_13
- DBM\_3797\_pPA\_DBM3797\_14
- DBM\_3797\_pPA\_DBM3797\_15
- DBM\_3797\_pPA\_DBM3797\_16
- DBM\_3797\_pPA\_DBM3797\_17
- DBM\_3797\_pPA\_DBM3797\_18
- DBM\_3797\_pPA\_DBM3797\_19
- DBM\_3797\_pPA\_DBM3797\_20
- DBM\_3797\_pPA\_DBM3797\_21
- DBM\_3797\_pPA\_DBM3797\_22
- DBM\_3797\_pPA\_DBM3797\_23
- DBM\_3797\_pPA\_DBM3797\_24
- DBM\_3797\_pPA\_DBM3797\_25
- DBM\_3797\_pPA\_DBM3797\_26
- DBM\_3797\_pPA\_DBM3797\_27
- DBM\_3797\_pPA\_DBM3797\_28
- DBM\_3797\_pPA\_DBM3797\_29
- DBM\_3797\_pPA\_DBM3797\_30
- DBM\_3797\_pPA\_DBM3797\_31
- DBM\_3797\_pPA\_DBM3797\_32
- DBM\_3797\_pPA\_DBM3797\_33
- DBM\_3797\_pPA\_DBM3797\_34
- DBM\_3797\_pPA\_DBM3797\_35
- DBM\_3797\_pPA\_DBM3797\_36
- DBM\_3797\_pPA\_DBM3797\_37
- DBM\_3797\_pPA\_DBM3797\_38
- DBM\_3797\_pPA\_DBM3797\_39
- DBM\_3797\_pPA\_DBM3797\_40
- DBM\_3797\_pPA\_DBM3797\_41
- DBM\_3797\_pPA\_DBM3797\_42
- DBM\_3797\_pPA\_DBM3797\_43
- DBM\_3797\_pPA\_DBM3797\_44
- DBM\_3797\_pPA\_DBM3797\_45
- DBM\_3797\_pPA\_DBM3797\_46
- DBM\_3797\_pPA\_DBM3797\_47
- DBM\_3797\_pPA\_DBM3797\_48
- DBM\_3797\_pPA\_DBM3797\_49
- DBM\_3797\_pPA\_DBM3797\_50
- DBM\_3797\_pPA\_DBM3797\_51
- DBM\_3797\_pPA\_DBM3797\_52
- DBM\_3797\_pPA\_DBM3797\_53
- DBM\_3797\_pPA\_DBM3797\_54
- DBM\_3797\_pPA\_DBM3797\_55
- DBM\_3797\_pPA\_DBM3797\_56
- DBM\_3797\_pPA\_DBM3797\_57
- DBM\_3797\_pPA\_DBM3797\_58
- DBM\_3797\_pPA\_DBM3797\_59
- DBM\_3797\_pPA\_DBM3797\_60
- DBM\_3797\_pPA\_DBM3797\_61
- DBM\_3797\_pPA\_DBM3797\_62
- DBM\_3797\_pPA\_DBM3797\_63
- DBM\_3797\_pPA\_DBM3797\_64
- DBM\_3797\_pPA\_DBM3797\_65
- DBM\_3797\_pPA\_DBM3797\_66
- DBM\_3797\_pPA\_DBM3797\_67
- DBM\_3797\_pPA\_DBM3797\_68
- DBM\_3797\_pPA\_DBM3797\_69
- DBM\_3797\_pPA\_DBM3797\_70
- DBM\_3797\_pPA\_DBM3797\_71
- DBM\_3797\_pPA\_DBM3797\_72
- DBM\_3797\_pPA\_DBM3797\_73
- DBM\_3797\_pPA\_DBM3797\_74
- DBM\_3797\_pPA\_DBM3797\_75
- DBM\_3797\_pPA\_DBM3797\_76
- DBM\_3797\_pPA\_DBM3797\_77
- DBM\_3797\_pPA\_DBM3797\_78
- DBM\_3797\_pPA\_DBM3797\_79
- DBM\_3797\_pPA\_DBM3797\_80
- DBM\_3797\_pPA\_DBM3797\_81
- DBM\_3797\_pPA\_DBM3797\_82
- DBM\_3797\_pPA\_DBM3797\_83
- DBM\_3797\_pPA\_DBM3797\_84
- DBM\_3797\_pPA\_DBM3797\_85
- DBM\_3797\_pPA\_DBM3797\_86
- DBM\_3797\_pPA\_DBM3797\_87
- DBM\_3797\_pPA\_DBM3797\_88
- DBM\_3797\_pPA\_DBM3797\_89
- DBM\_3797\_pPA\_DBM3797\_90
- DBM\_3797\_pPA\_DBM3797\_91
- DBM\_3797\_pPA\_DBM3797\_92
- DBM\_3797\_pPA\_DBM3797\_93
- DBM\_3797\_pPA\_DBM3797\_94
- DBM\_3797\_pPA\_DBM3797\_95
- DBM\_3797\_pPA\_DBM3797\_96
- DBM\_3797\_pPA\_DBM3797\_97
- DBM\_3797\_pPA\_DBM3797\_98
- DBM\_3797\_pPA\_DBM3797\_99
- DBM\_3797\_pPA\_DBM3797\_100