

Supplementary material



Plate 1(a). *Leucosidea sericea* encroachment in the Maloti-Drakensberg, southern Africa: (A) Witsieshoek area (Batlokoa Traditional Authority), (B) Cathedral Peak Catchment IX (uKhahlamba-Drakensberg Park). Photos: M. Dlomu.

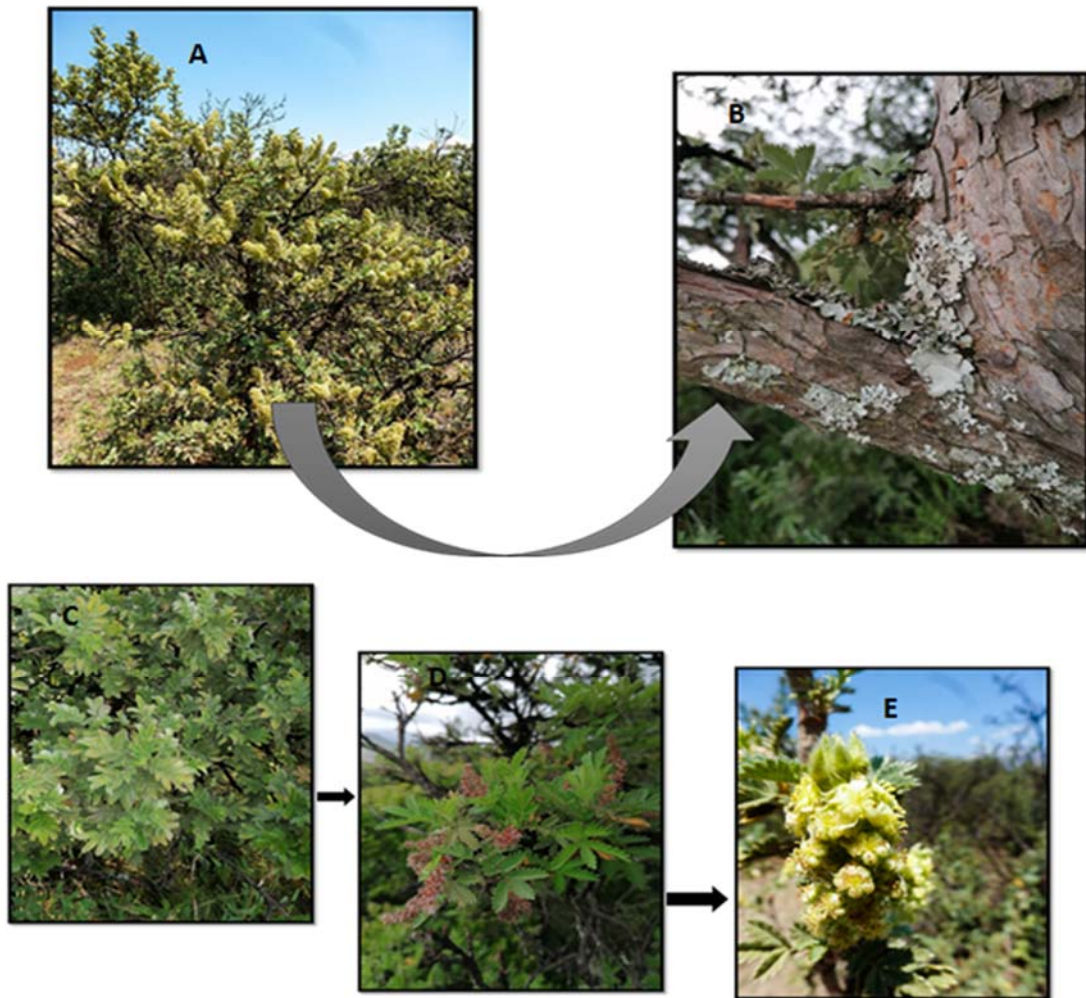


Plate 1(b). *Leucosidea sericea* (Rosaceae): (A) full plant; (B) bark; (C) foliage; (D) flowers in a raceme; (E) senescent flowers on shrub. Photo: M. Dlomu (A–D), V.R. Clark (E)

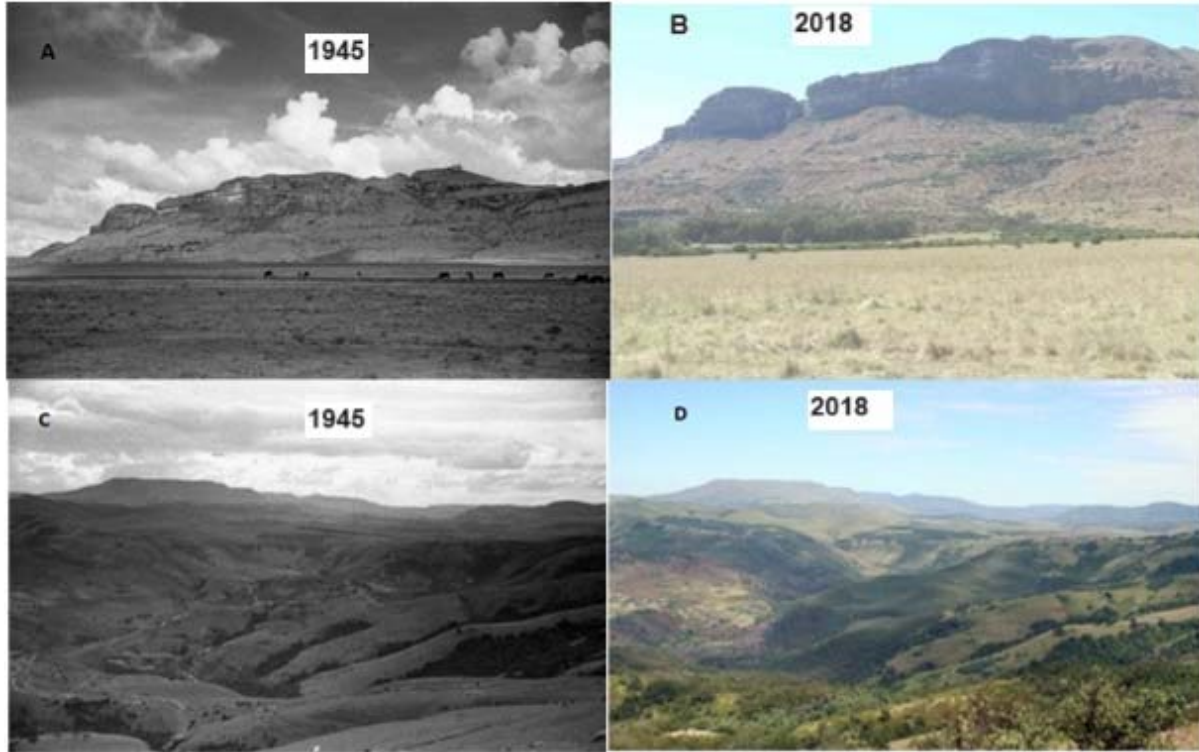


Plate 2. Repeat photography showing *Leucosidea sericea* encroachment in: A (28-01-1945) and B (02-11-2018), Free State province and C (20-11-1945) and D (13-01-2018), KwaZulu Natal Provinces of South Africa. The historical images are freely available online (<http://www.cdngiportal.co.za/CDNGIPortal/>).

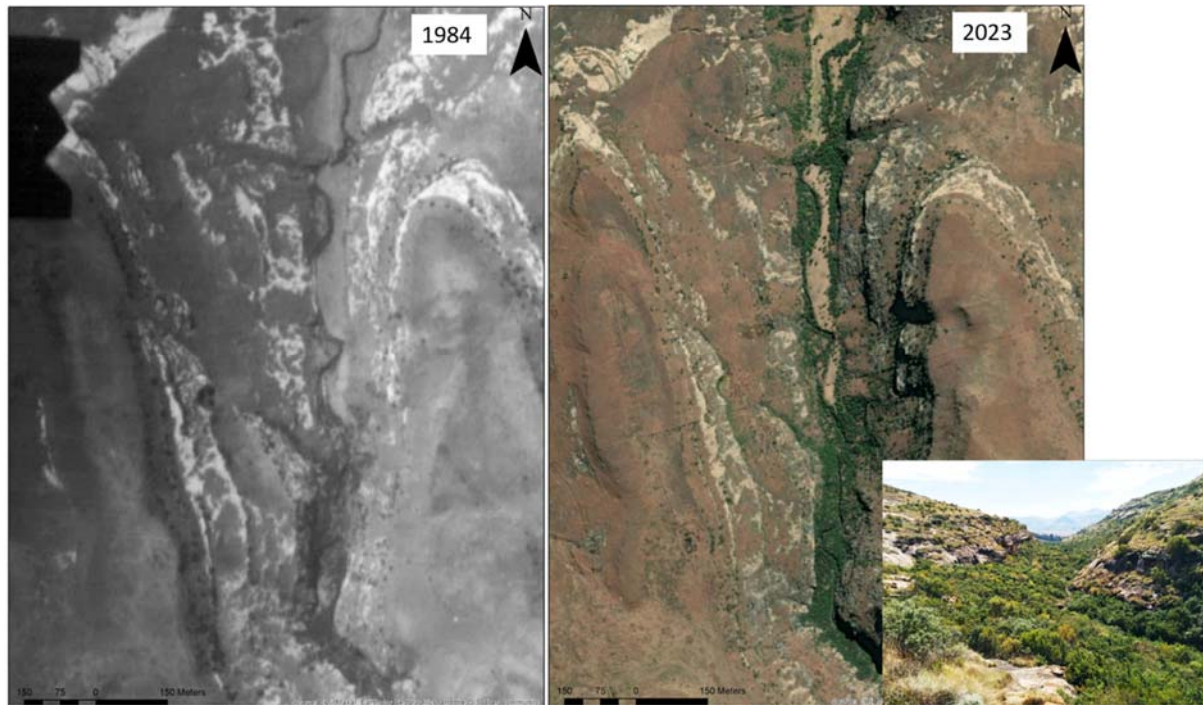


Plate 3. Repeat photography showing *Leucosidea sericea* encroachment near the town of Clarens, Free State Province (<http://www.cdngiportal.co.za/CDNGIPortal/>).