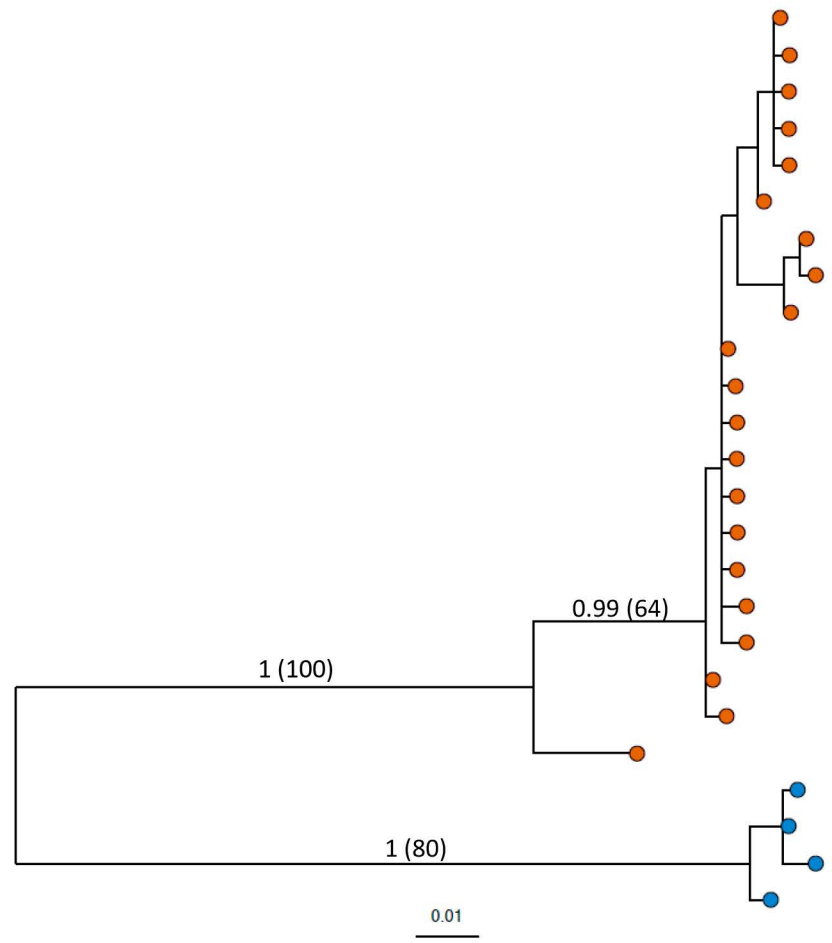
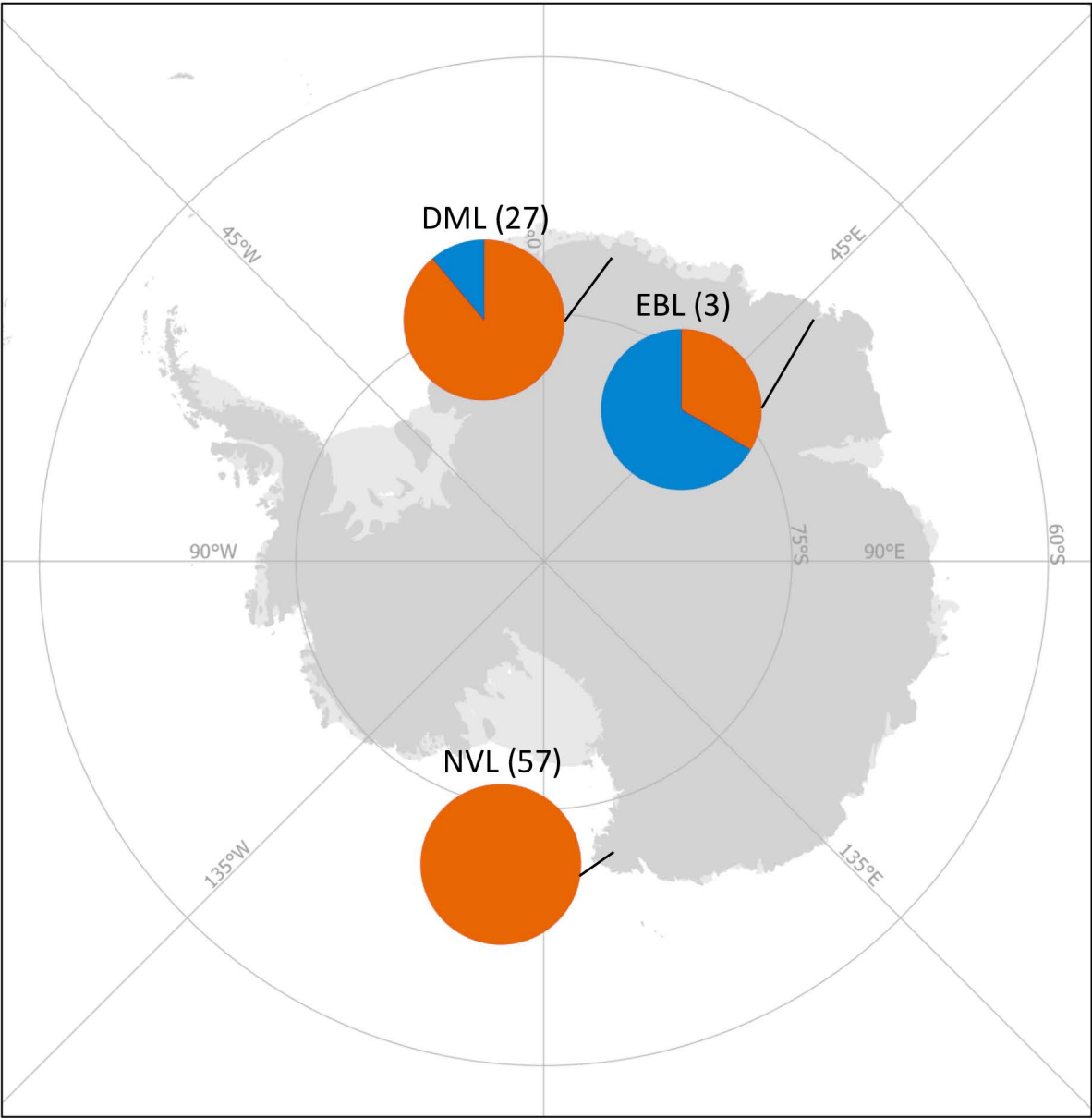
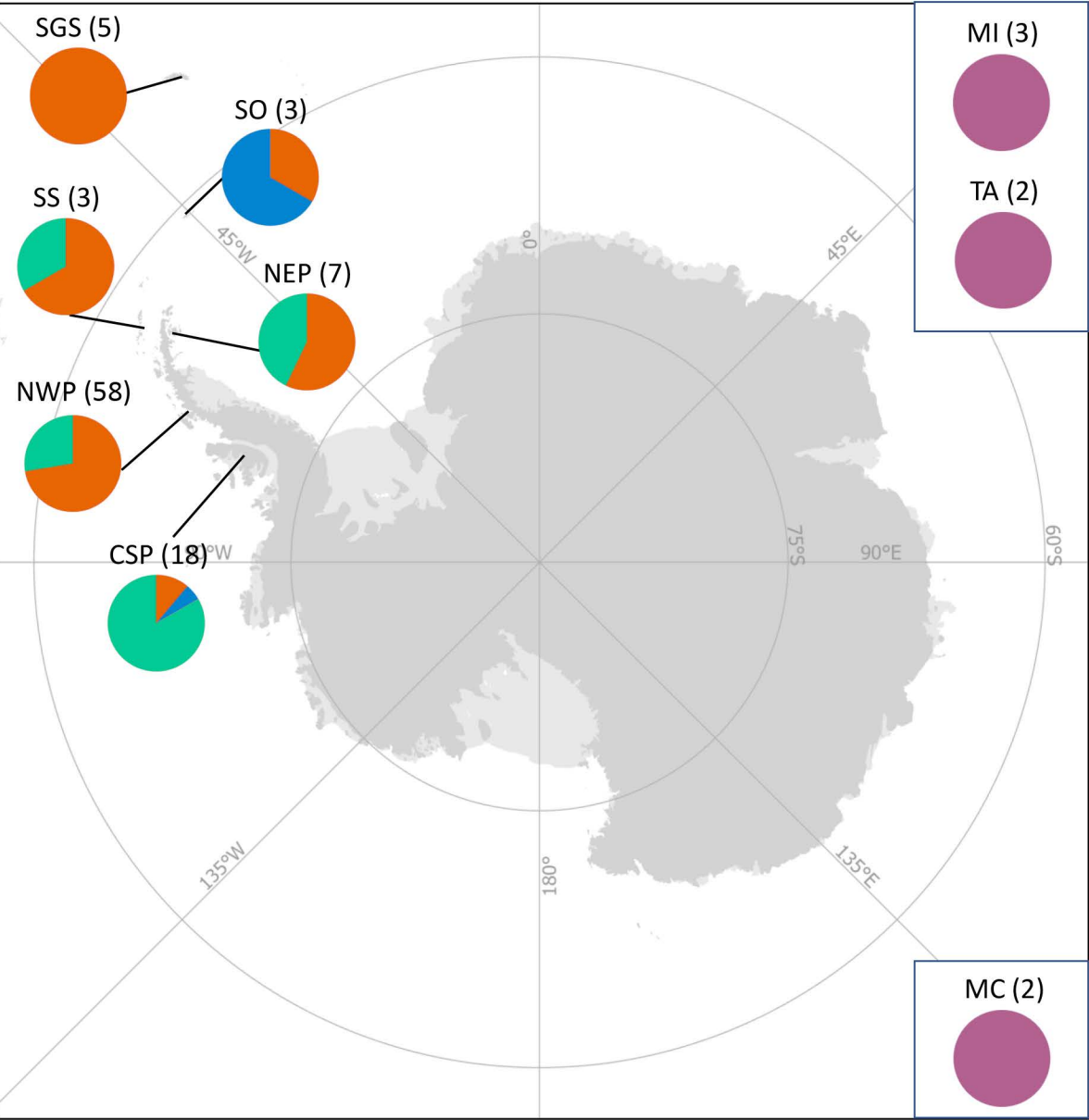
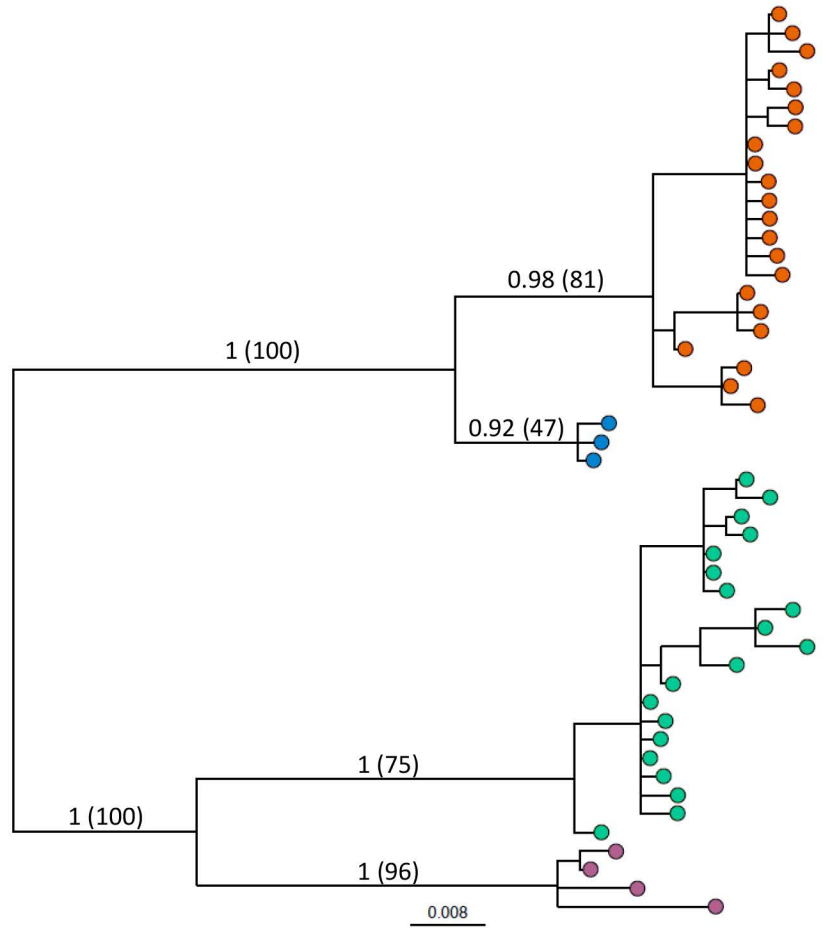


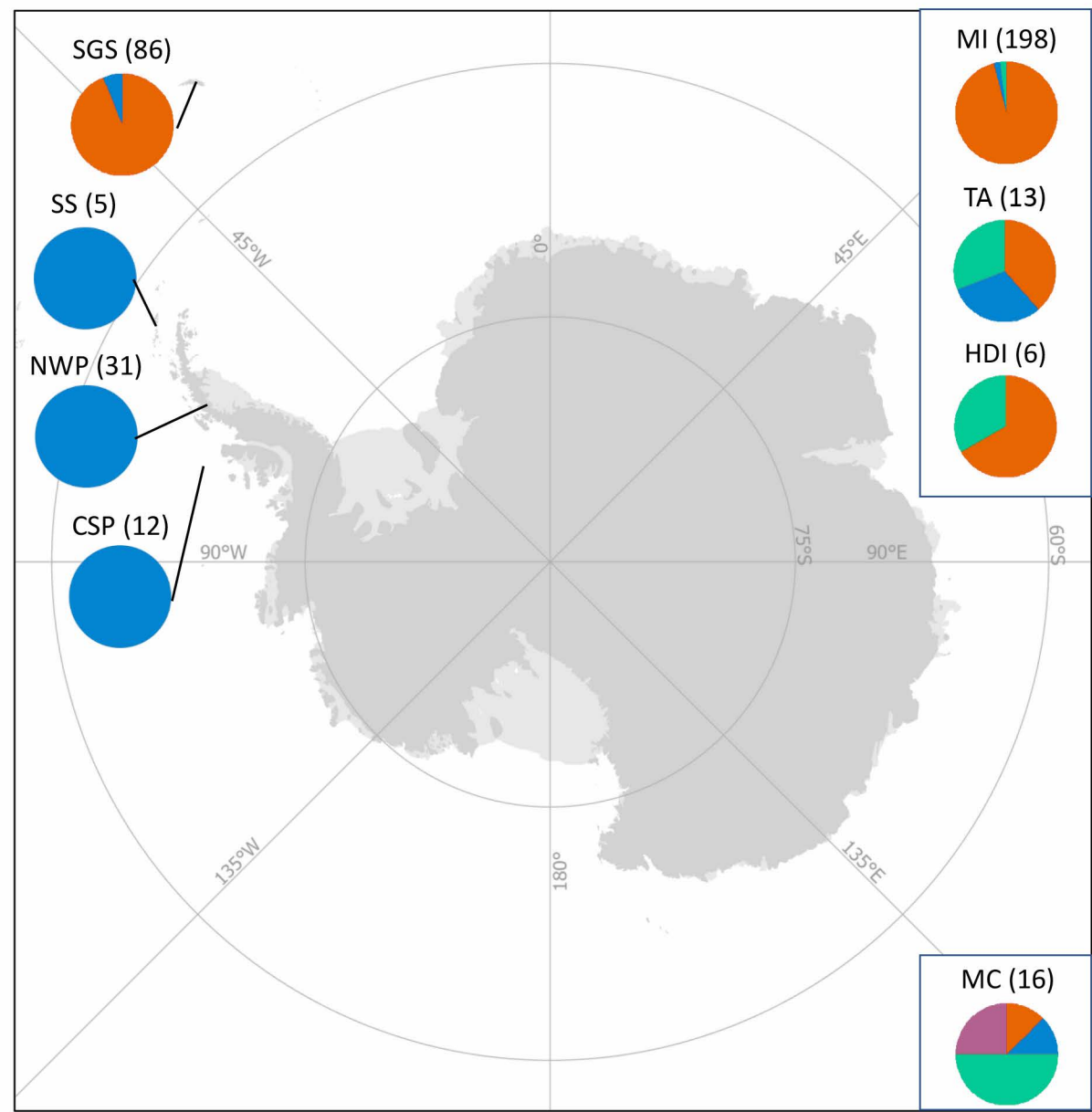
Tardigrade (COI)
Acutuncus antarcticus



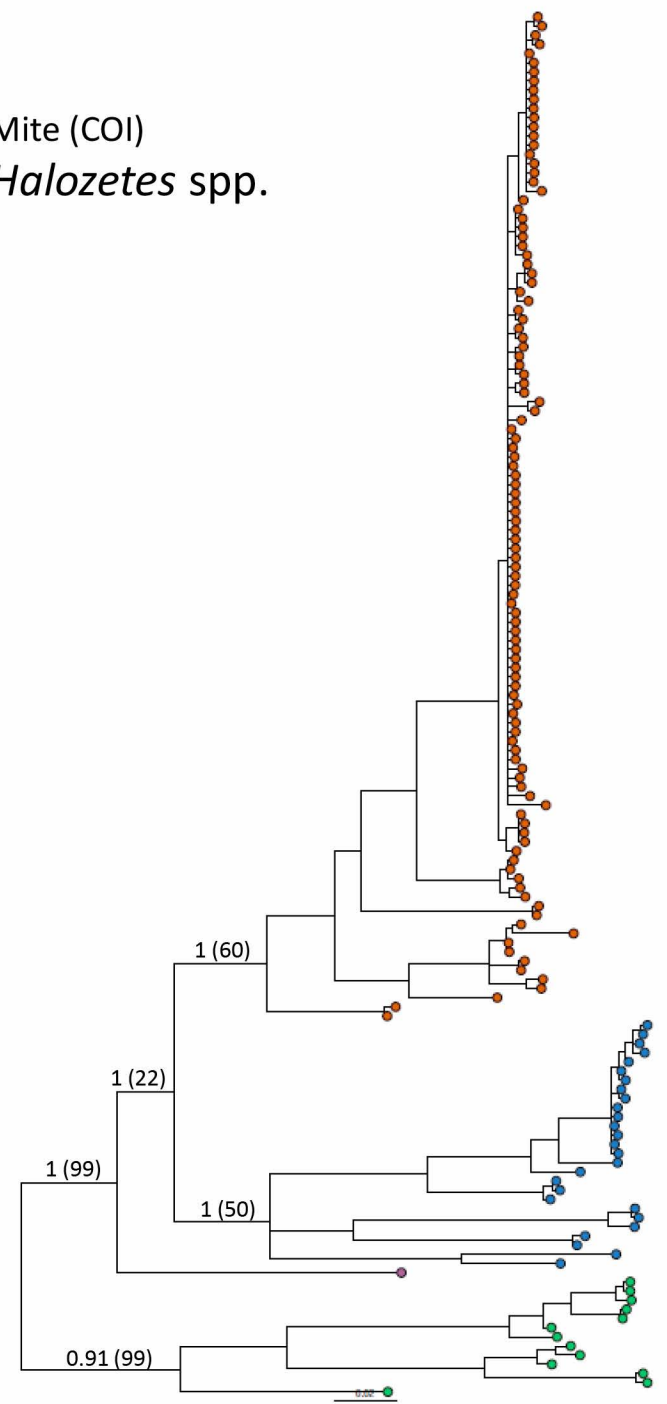


Mite (COI)
Alaskozetes antarcticus

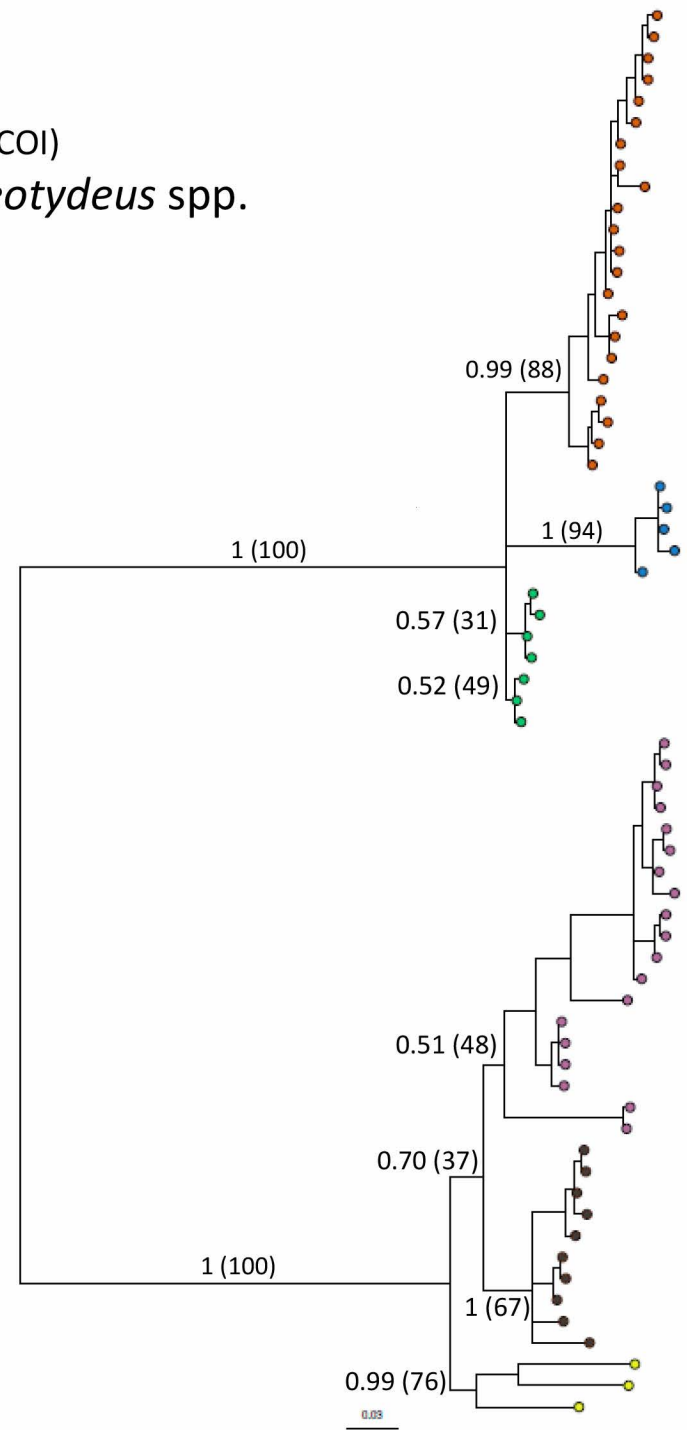
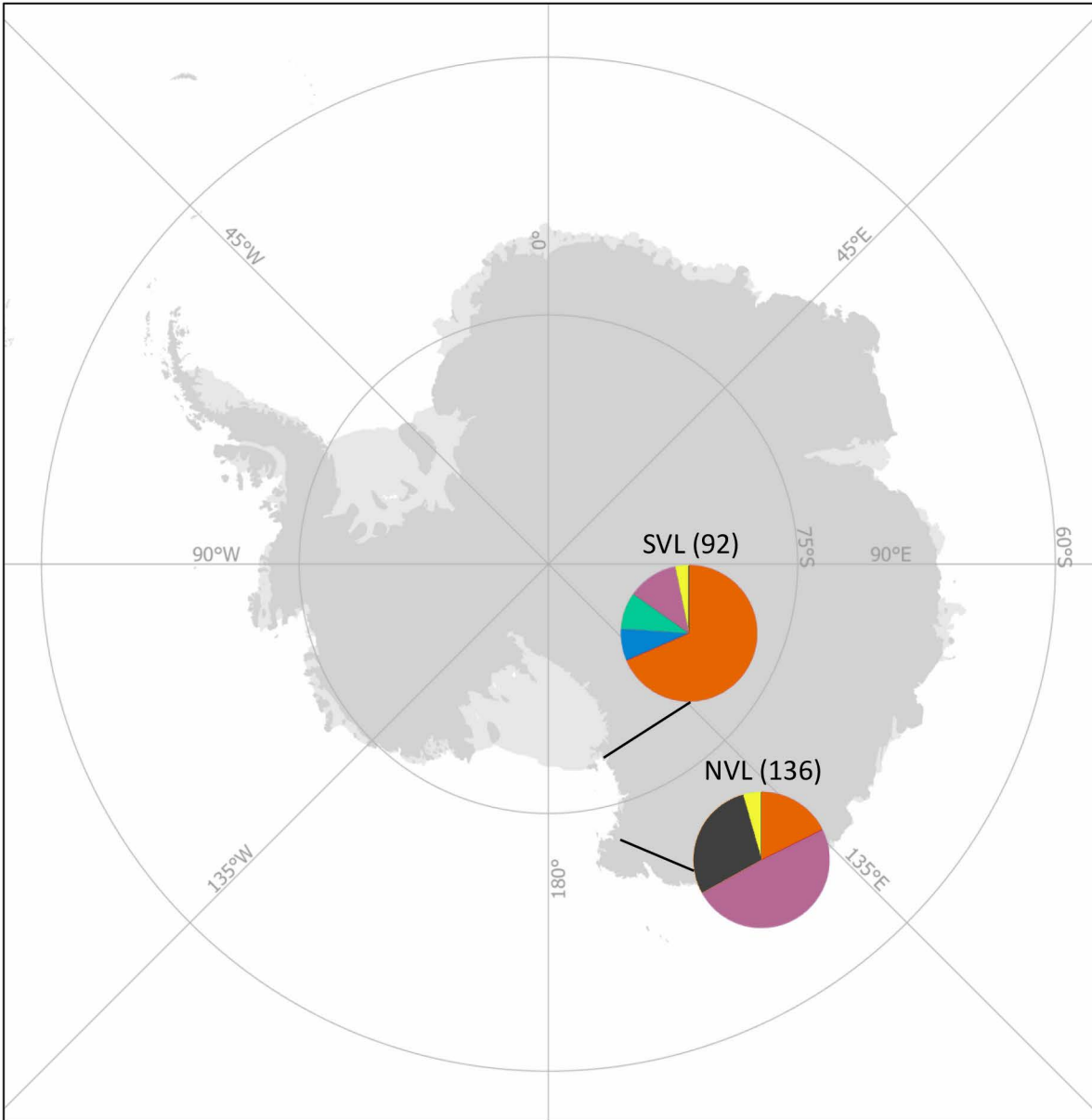


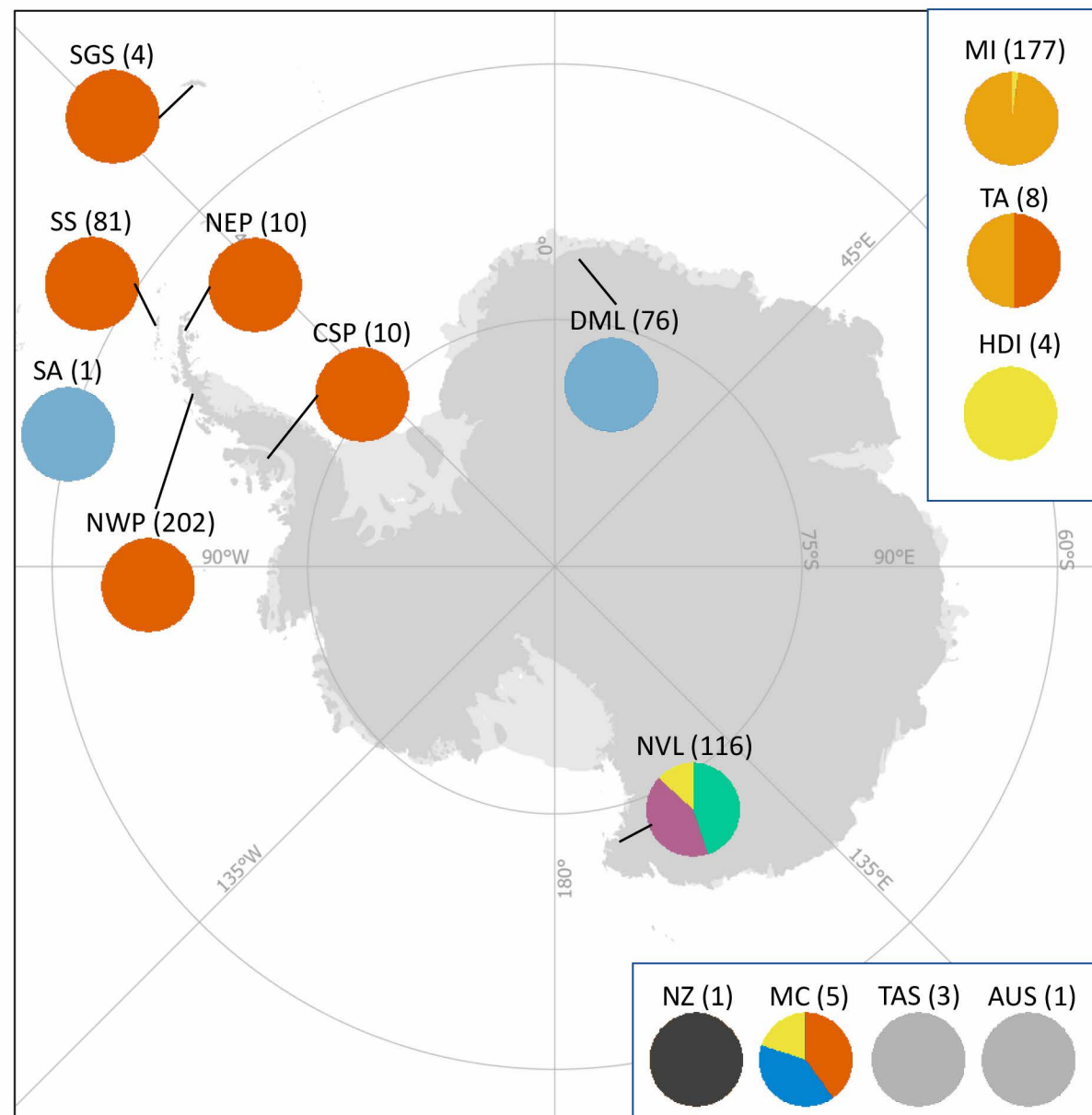


Mite (COI)
Halozetes spp.

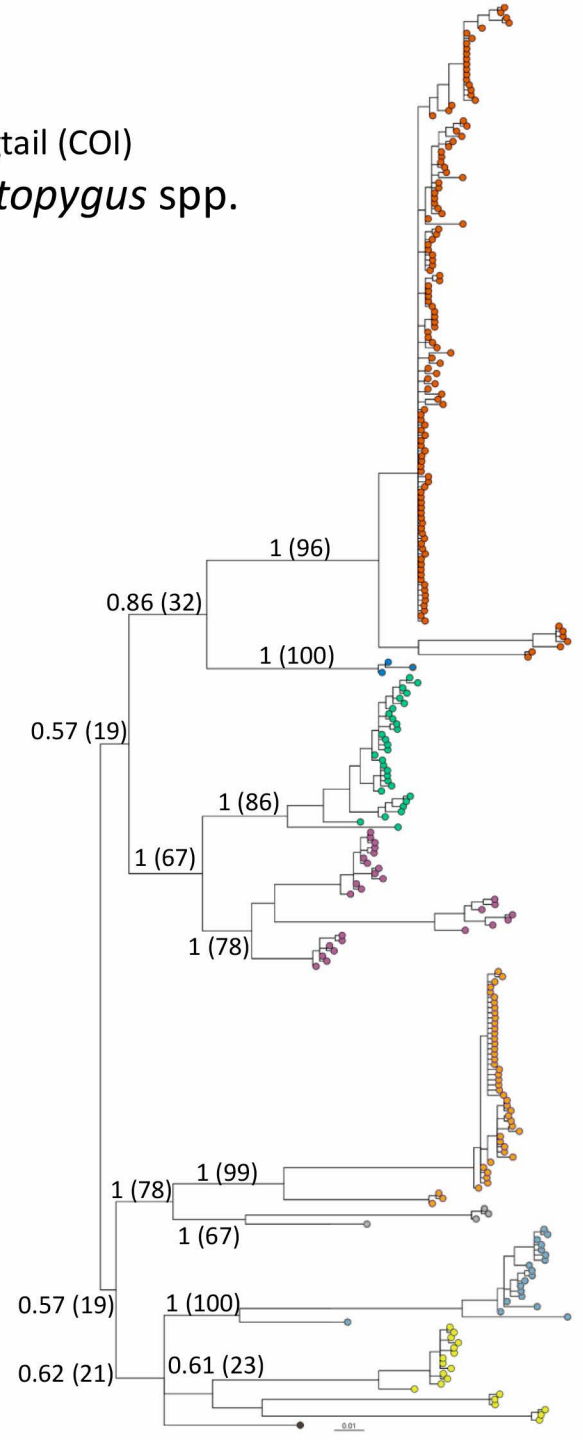


Mite (COI)
Stereotydeus spp.

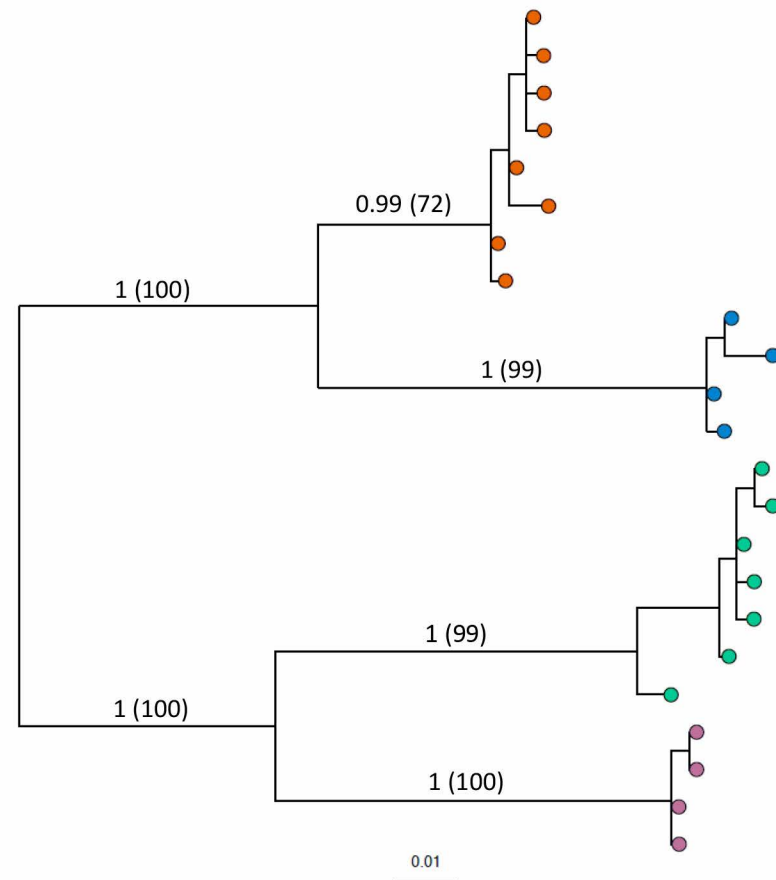
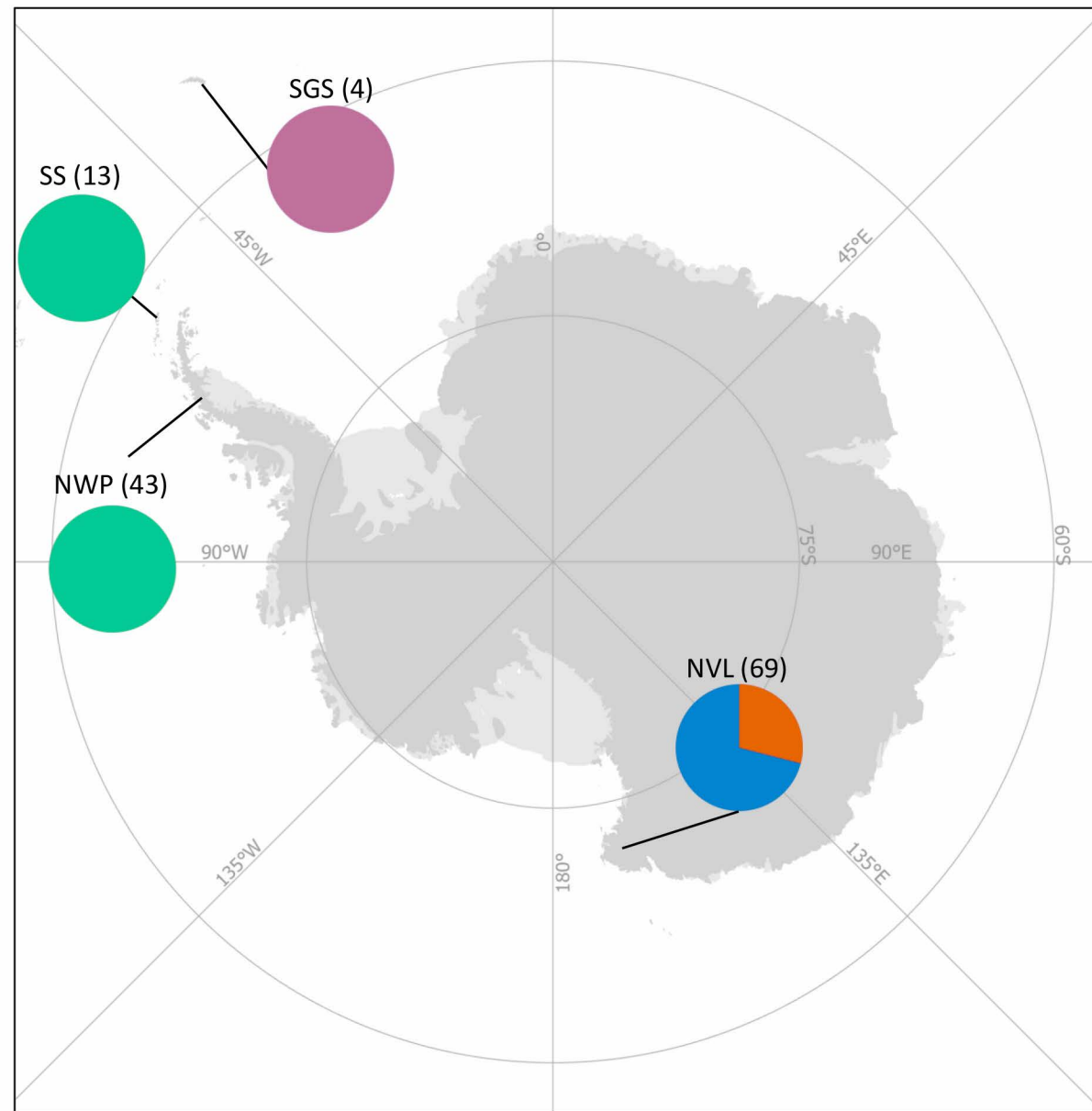


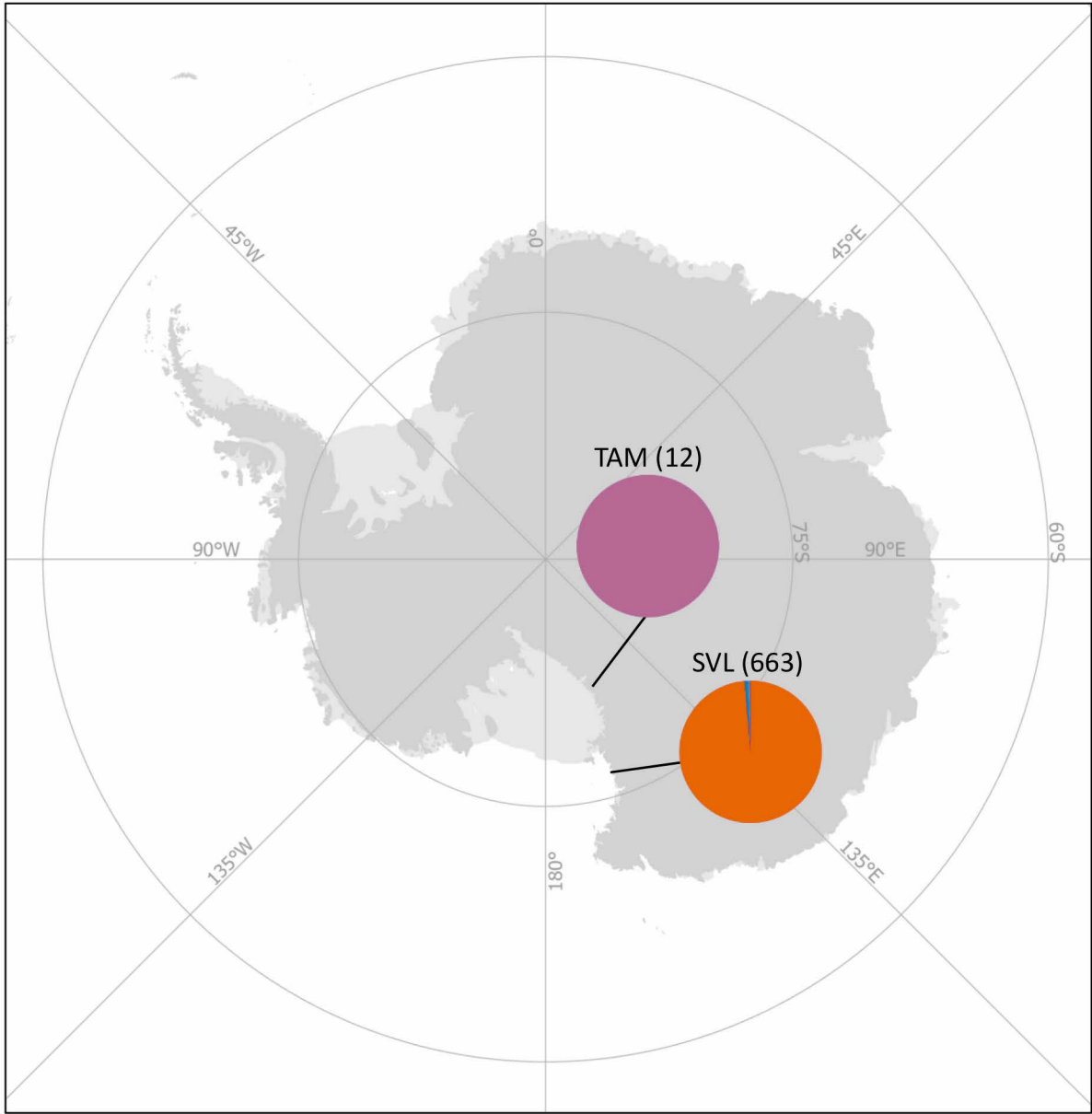


Springtail (COI)
Cryptopygus spp.

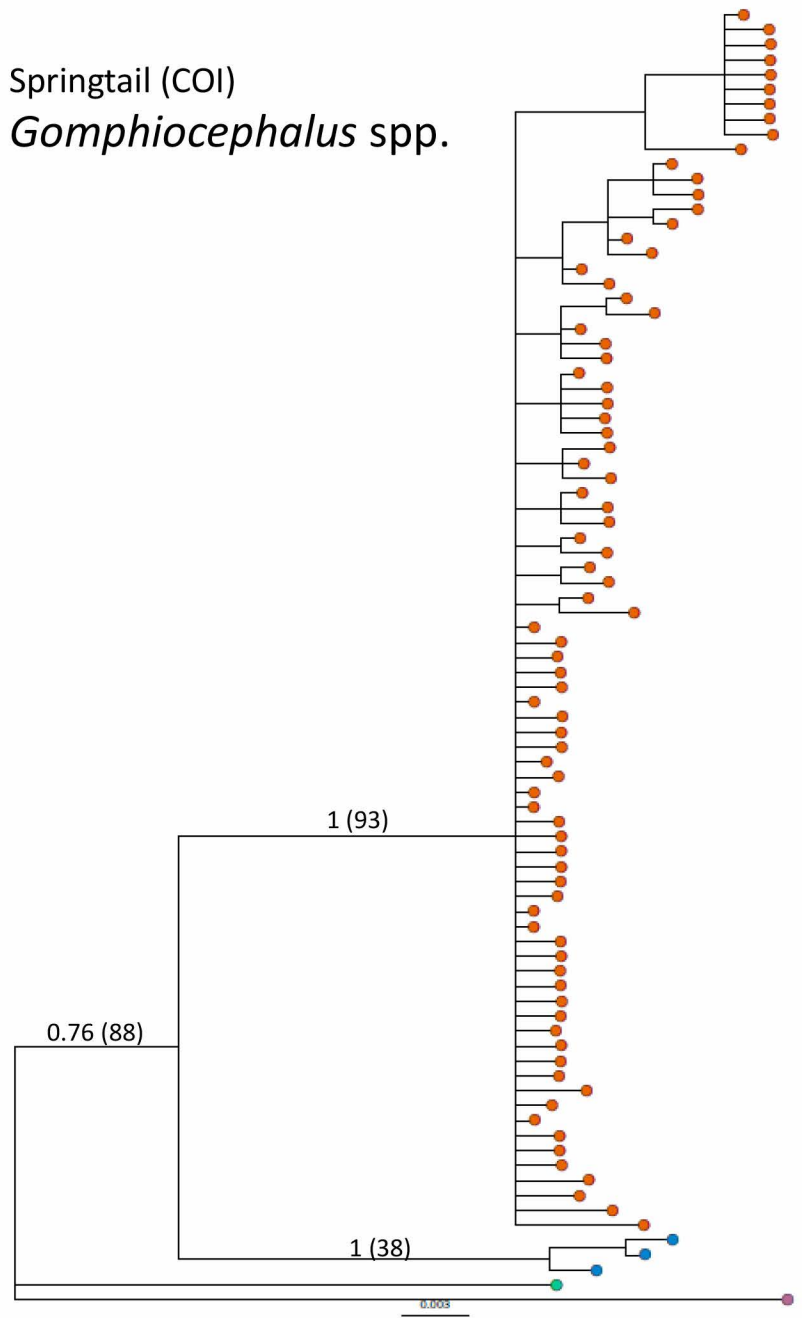


Springtail (COI)
Friesea spp.

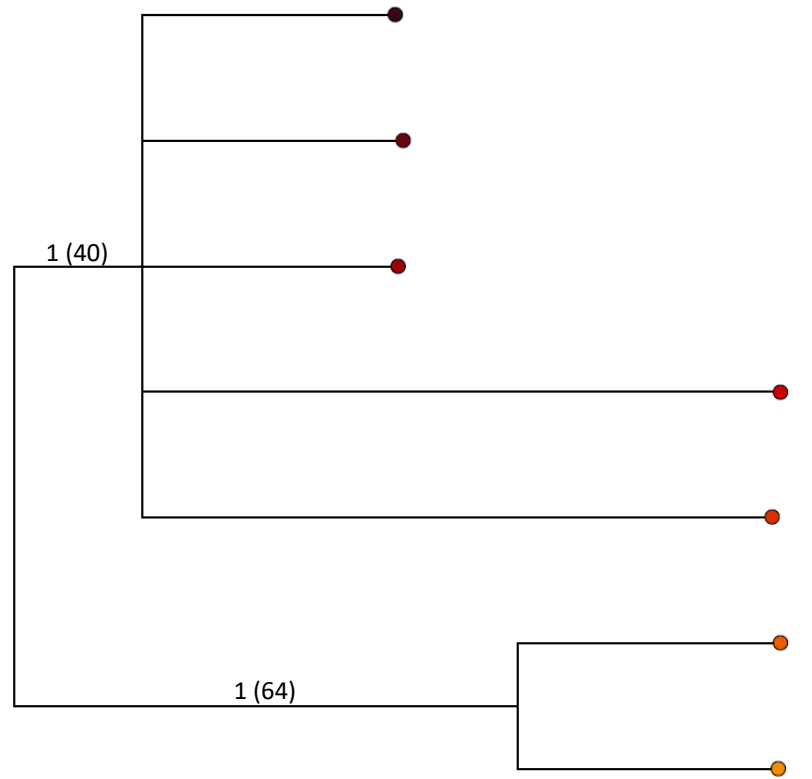
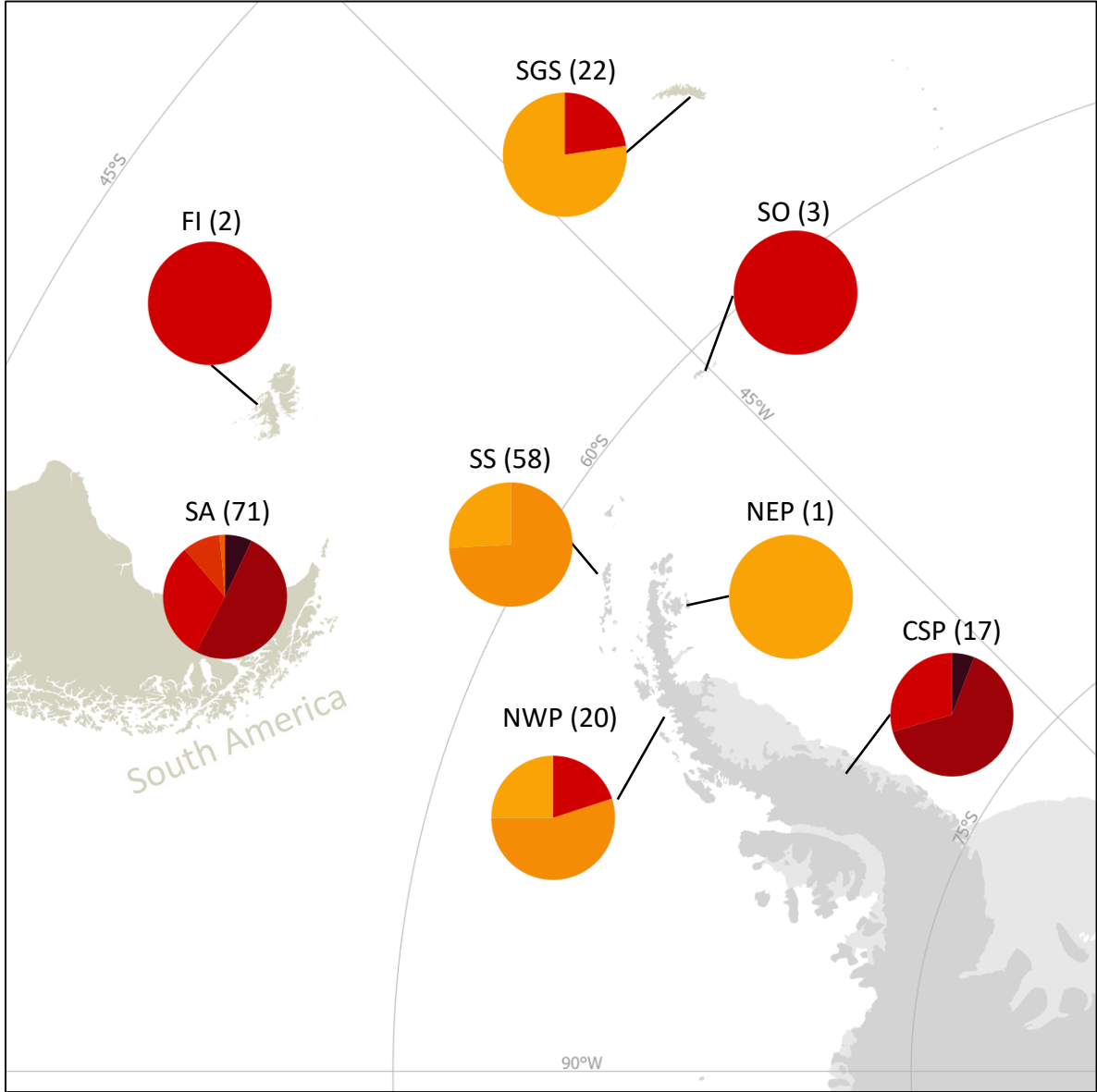




Springtail (COI)
Gomphiocephalus spp.



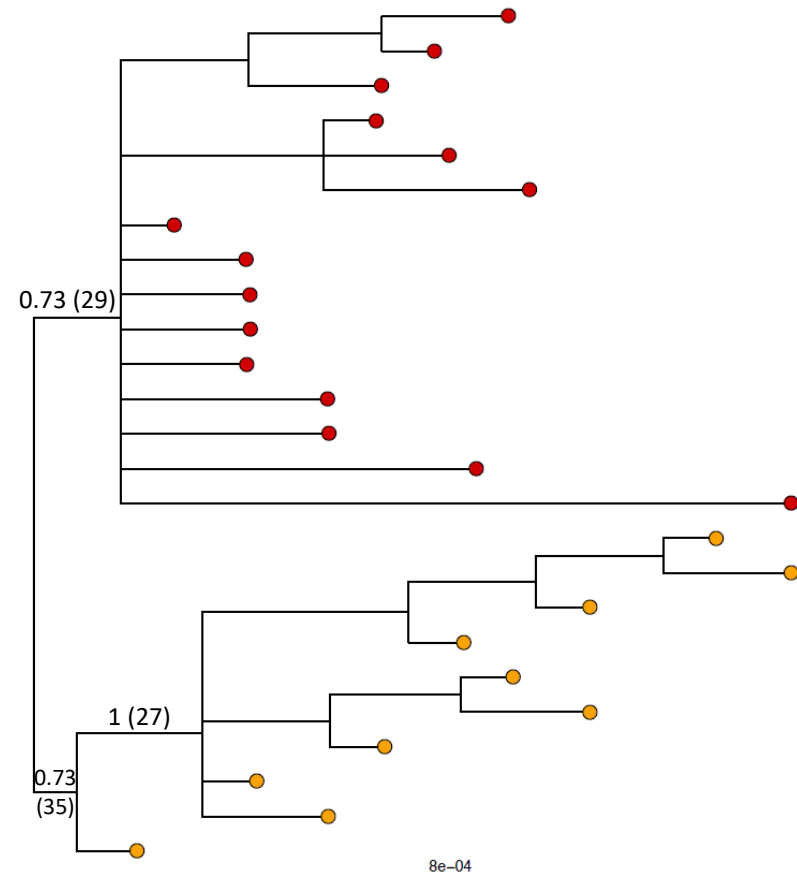
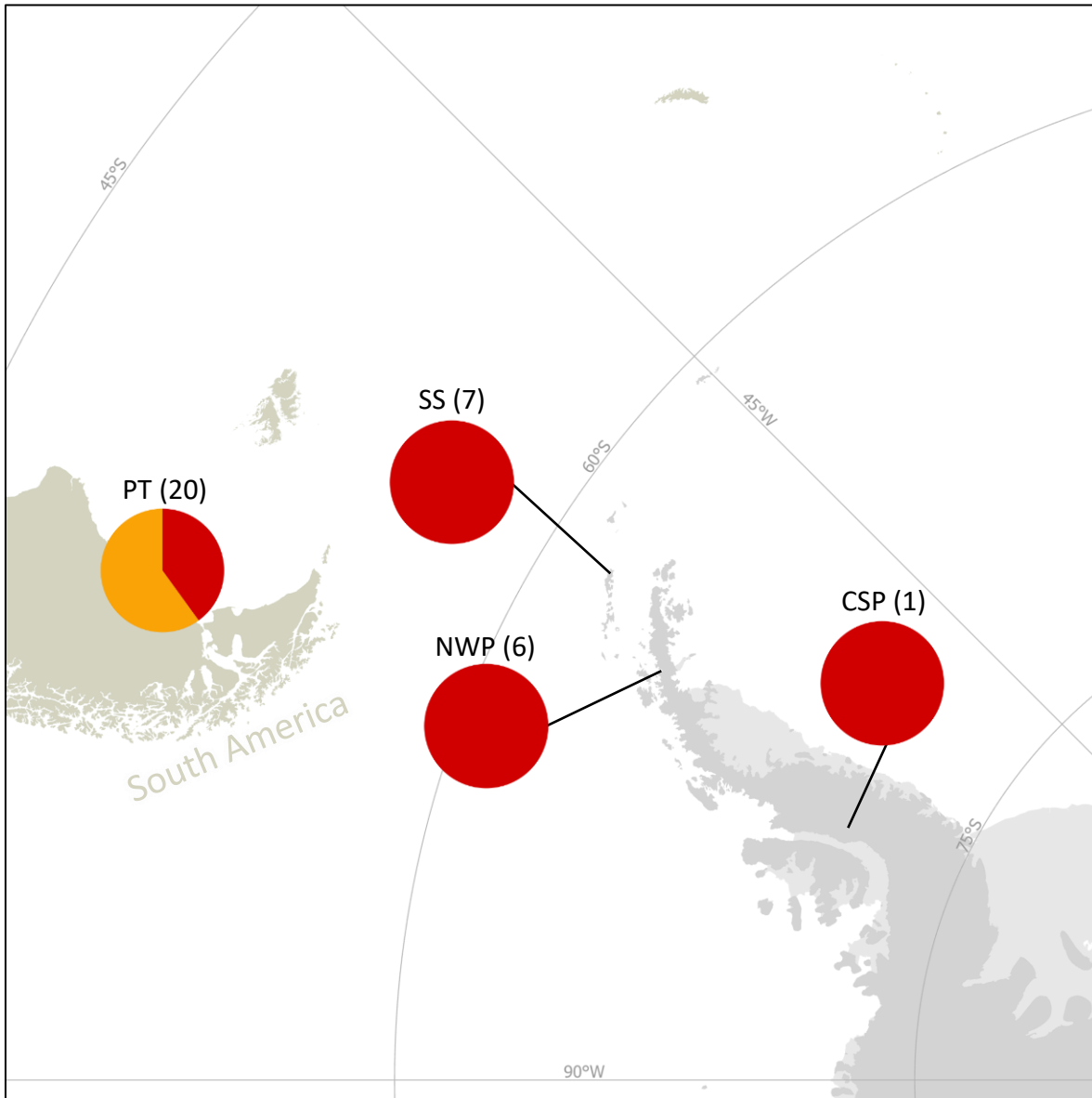
Angiosperm (ITS1)
Colobanthus quitensis

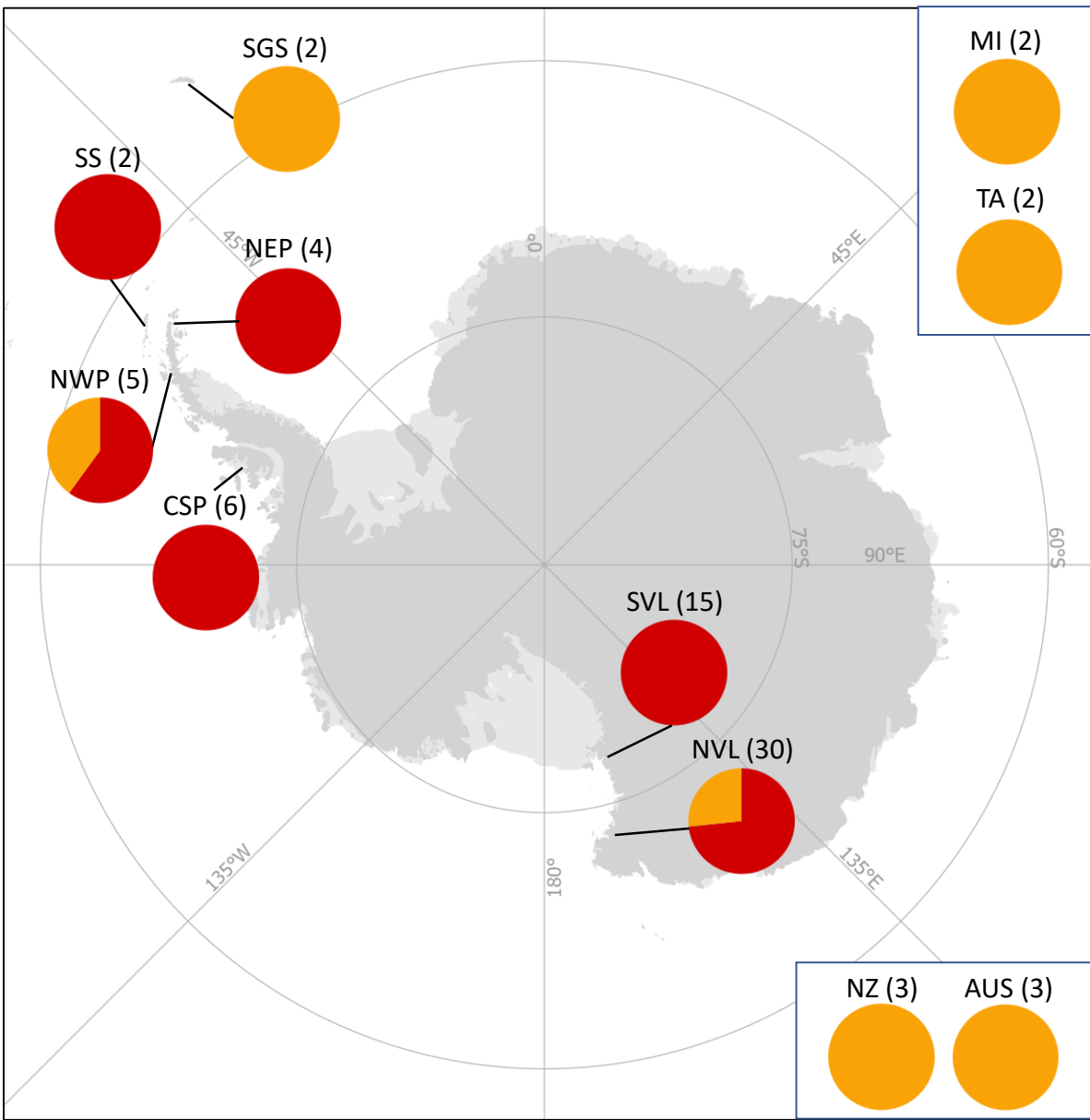


9e-05



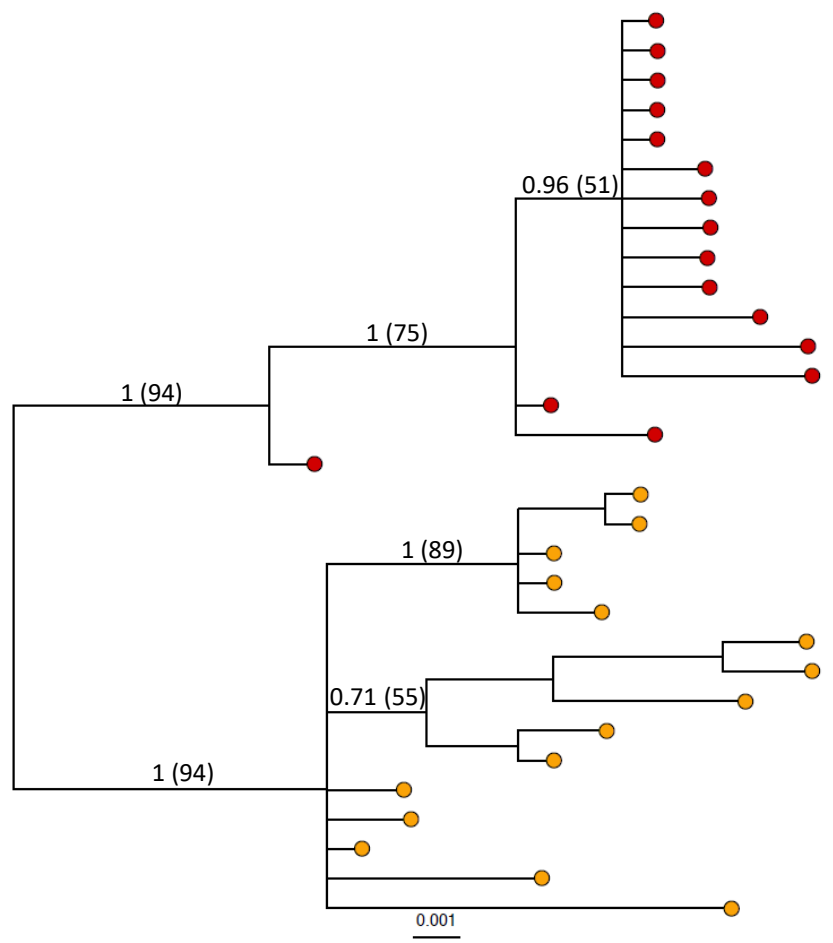
Angiosperm (ITS1)
Deschampsia antarctica

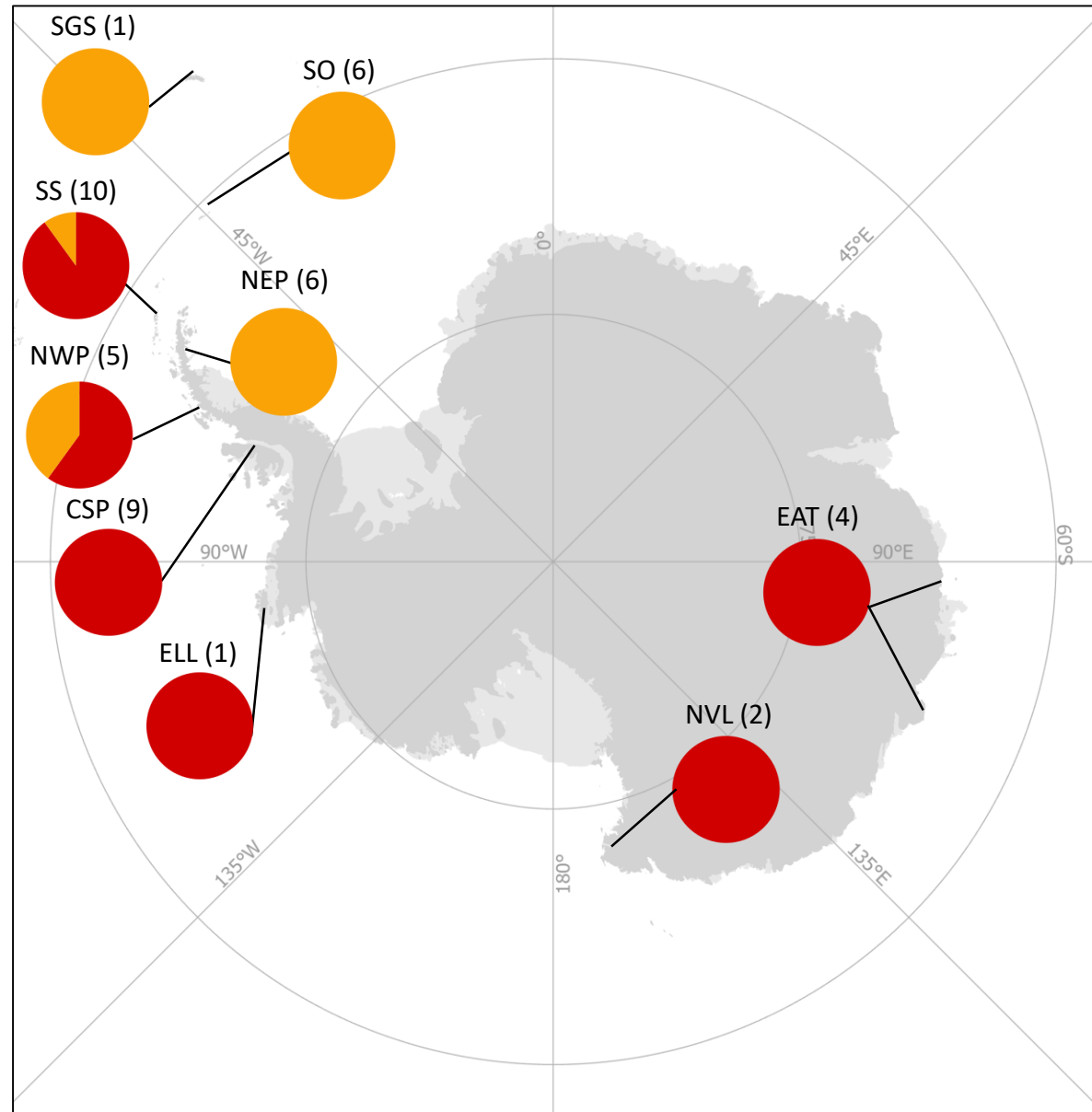




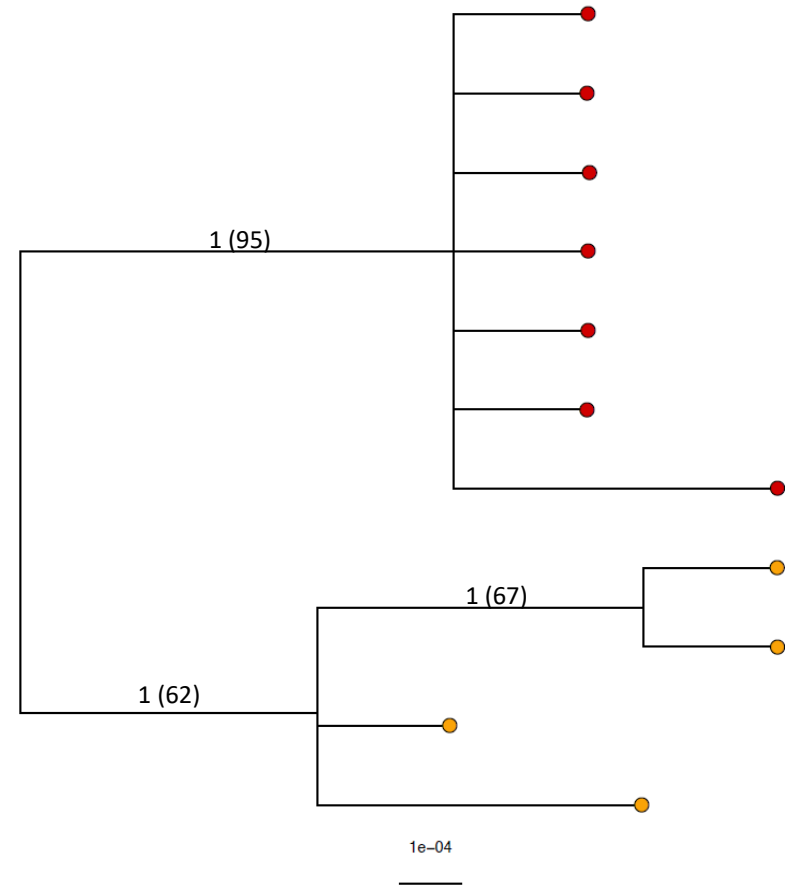
Moss (ITS1)
Bryum argenteum

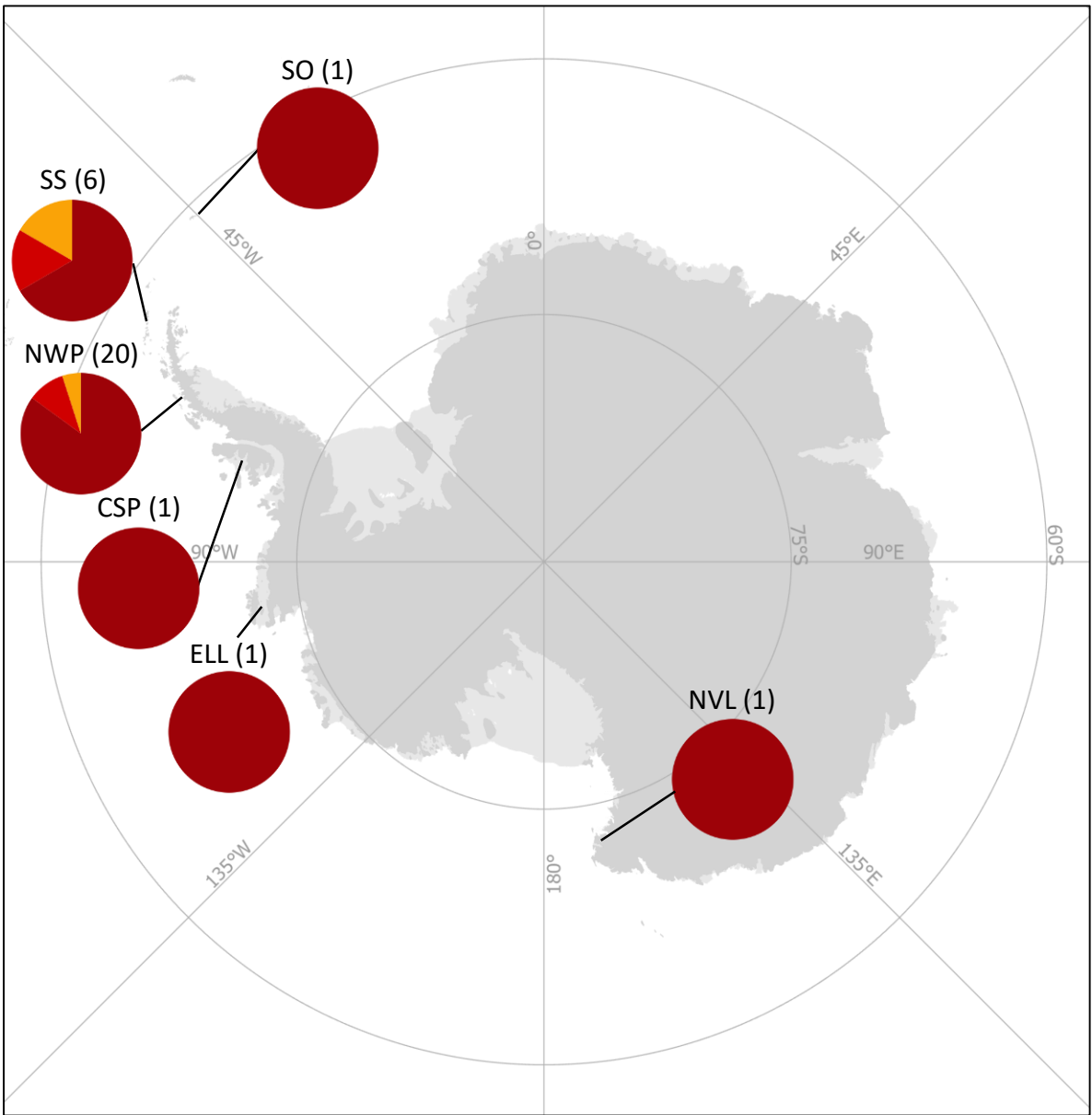
Haplotype
■ C1
■ C2



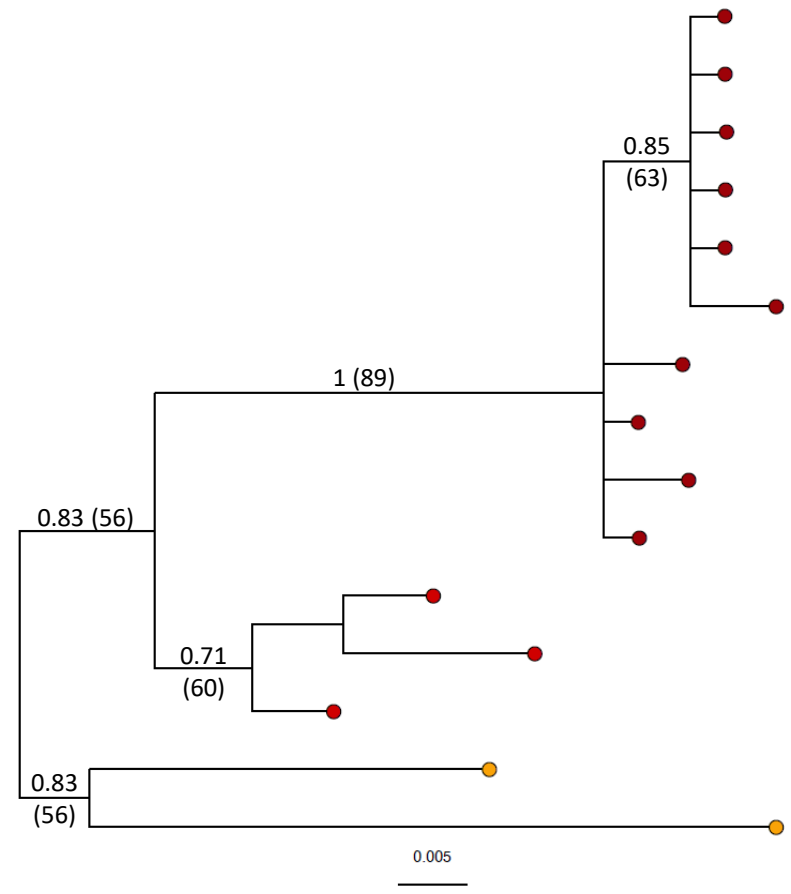


Moss (ITS1)
Schistidium antarctici





Lichen (ITS1)
Umbilicaria spp.



Lichen (ITS1)
Usnea spp.

