

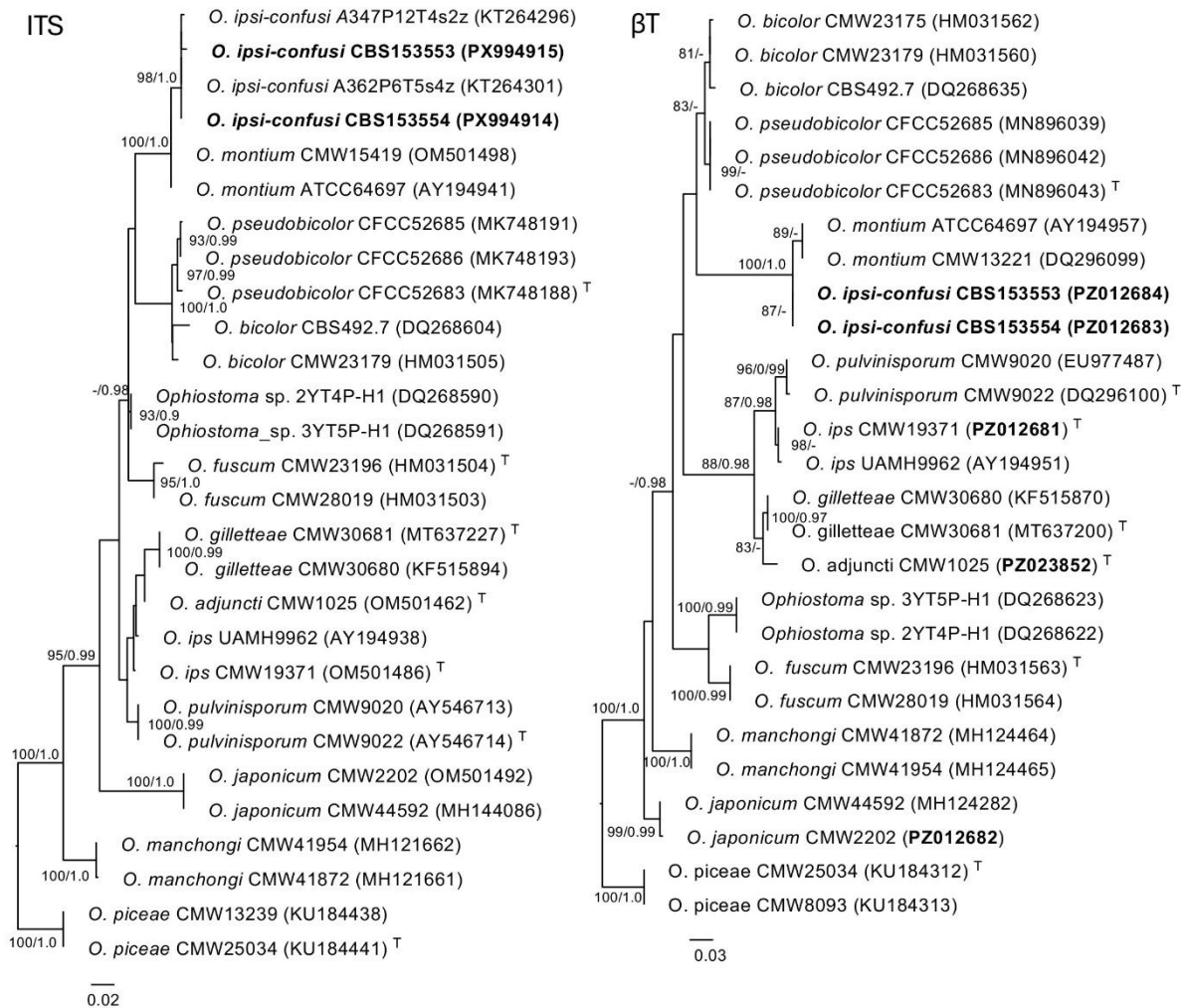
Online resource 1 for: *Ophiostoma ipsi-confusi* sp. nov. Six, Marinc. & Duong, a consistent symbiotic fungus of the pinyon ips bark beetle, *Ips confusus* LeConte

Diana L. Six^{1,2}, Seonju Marincowitz², Tuan A. Duong²

¹Department of Ecosystem and Conservation Sciences, University of Montana, Missoula, MT, USA

² Department of Biochemistry, Genetics and Microbiology, Forestry and Agricultural Biotechnology Institute, University of Pretoria, Pretoria, South Africa

Corresponding author: Diana L. Six diana.six@umontana.edu



Supplementary Fig. 1. Phylogenetic trees derived from maximum likelihood analyses of ITS (left) and BT (right) sequence datasets of species in the *Ophiostoma ips* complex. Tree is rooted to *O. piceae*; Isolates of *Ophiostoma ipsi-confusi* isolated and described from this study are

indicated in bold type. Maximum likelihood bootstrap values (ML \geq 75%) and Bayesian posterior probability values (BI \geq 95, calculated from 25380 trees sampled across 10 runs, each with 338300 generations for ITS and from 19400 trees sampled across 10 runs, each with 258600 generations for BT) are presented at nodes as ML/BI. T = type.