

NODE 01 | THE CLASSROOM | LEARNING & EMPOWERMENT

Purpose: *The Classroom* is a flexible, multi-functional learning environment designed to support formal and informal education. It serves as a starting point for individuals to gain foundational skills, engage in discussions, and participate in hands-on classes.

Features and Design:

Modular Desks and Furniture: *The Classroom* is outfitted with adaptable desks that can be arranged to suit different formats—individual study, group projects, or large community workshops or talks. This flexibility allows the space to evolve based on workshop or training needs, reinforcing the principle of *incremental* growth.

Wall-Mounted Track System with Clip-On Units: A track system on the walls enables users to customise their workspace by adding or removing tool trays, shelving, or even additional work surfaces. These interactive displays, to support diverse learning needs and teaching styles. The clip on units include a variety of resources to support classroom functions, from polycarbonate ‘whiteboards’, digital screens, tool carts to recycling units. This adaptability supports a sense of ownership and empowers users to organise their environment according to their specific needs.

Impact: The *Classroom* is a foundational space within the hub, supporting skill-building and *incremental* learning. By providing a versatile space that adapts to different educational activities, it encourages residents to take control of their learning journey and develop a sense of agency.



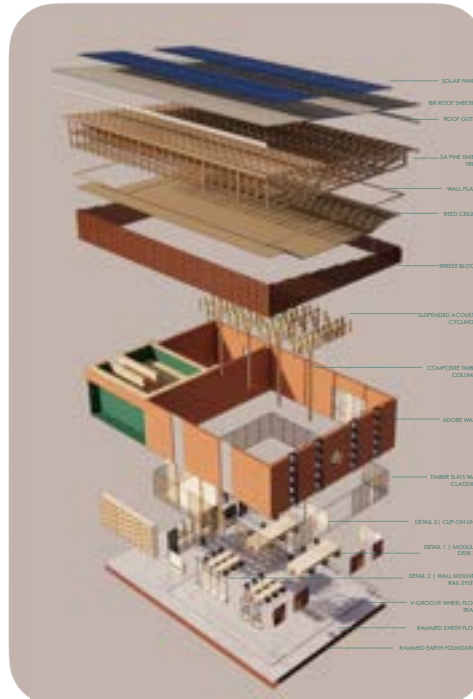
MAKERSPACE | NODE 01 - CLASSROOM | PERSPECTIVE PLAN



MAKERSPACE | NODE 01 - CLASSROOM | SECTION A-A



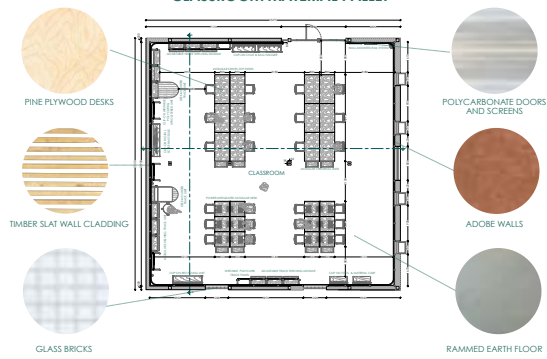
MAKERSPACE | NODE 01 - CLASSROOM | PERSPECTIVE



MAKERSPACE | NODE 01 - CO-WORKING SPACE | EXPLODED AXO



CLASSROOM MATERIAL PALLET



MAQUETTES

DETAIL 02 | WALL MOUNTED RAIL SYSTEM



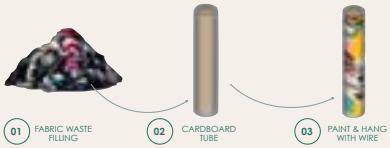
A VERSATILE AND ADAPTABLE STORAGE AND DISPLAY SOLUTION DESIGNED TO MEET VARYING LEARNING AND WORKSPACE NEEDS. OFFERING THE CAPABILITY TO BE EASILY RECONFIGURED OR REORGANIZED ALONG THE TRACE. ENHANCING DYNAMIC SETUPS FOR DIFFERENT SCENARIOS SUCH AS WORKSHOPS, MEETINGS, OR COLLABORATIVE ACTIVITIES. THIS SYSTEM ENHANCES FLEXIBILITY WHILE MAINTAINING SPATIAL EFFICIENCY AND ADAPTABILITY.

DETAIL 03 | CLIP-ON UNITS



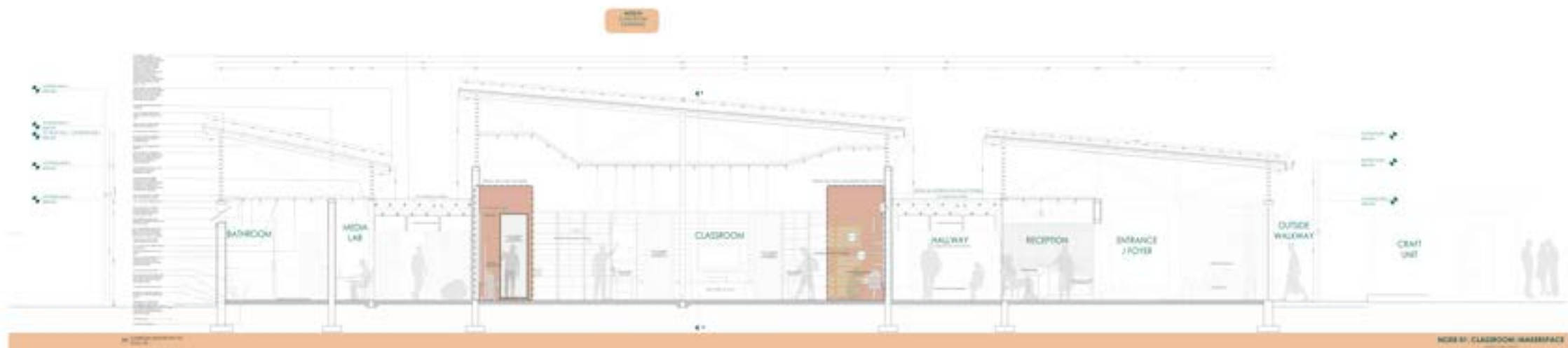
THE CLIP-ON UNITS AND MODULAR BEGGS ENERGY CHARGE ARCHITECTURE BY ENHANCING FLEXIBILITY AND INTERACTION WITHIN THE SPACE. CLIP-ON UNITS EASILY CONNECTED TO THE DEMONSTRATING WALLS. MODULAR DESKS CAN BE RECONFIGURED FOR GROUP WORKSHOPS, COLLABORATIVE ACTIVITIES OR MEETINGS. FURTHER, THE SYSTEM CREATING AN ENVIRONMENT THAT ENCOURAGES COLLABORATION TO MEET THE NEEDS OF DIVERSE LEARNING, CREATIVITY AND COLLABORATION.

ACOUSTIC DETAIL

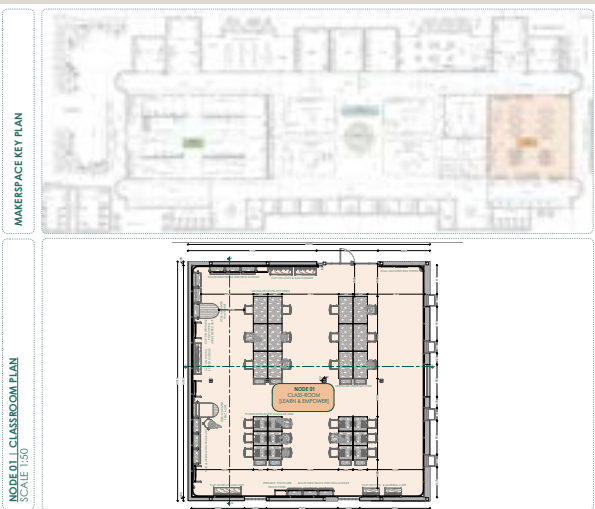


MOODBOARD

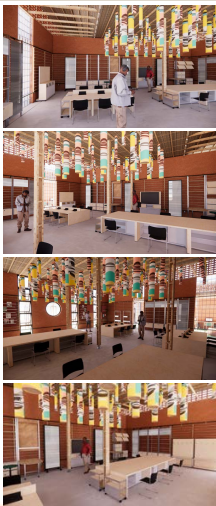




NODE 01: CLASSROOM MAKERSPACE

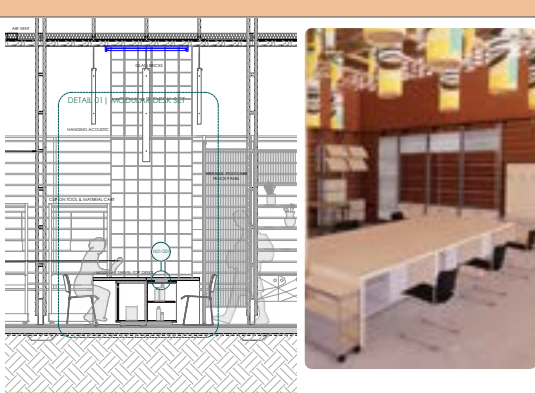


NODE 01: CLASSROOM SECTION_A-A
SCALE 1:20



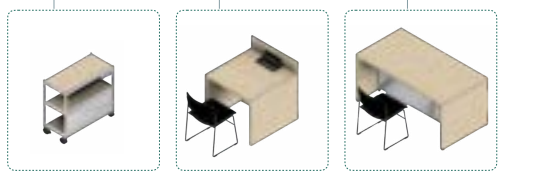
NODE 01: CLASSROOM | MAKERSPACE
NODE FOR GOOD

DETAIL 01: MODULAR DESK SET

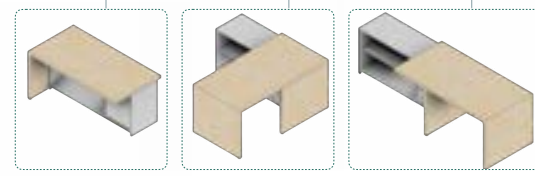
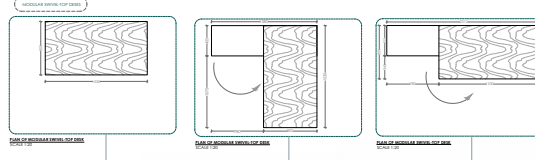


0101 MAKERSPACE SECTION A-A
SCALE 1:20

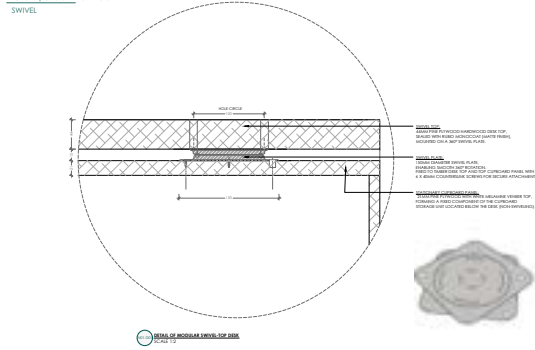
- OBJECTS**
- MODULAR DESK SET:** Includes desk, chair, and storage units. Features include:
 - Adjustable desk height (700-800mm)
 - Modular storage units (300x500mm)
 - Wall-mounted rail system for accessories
 - MODULAR STORAGE UNIT:** Features include:
 - Adjustable shelves (50-100mm)
 - Modular design for easy reconfiguration
 - WALL-MOUNTED RAIL SYSTEM:** Features include:
 - Adjustable height (150-200mm)
 - Modular design for easy reconfiguration



FOCUS: USAGE & VERSATILITY

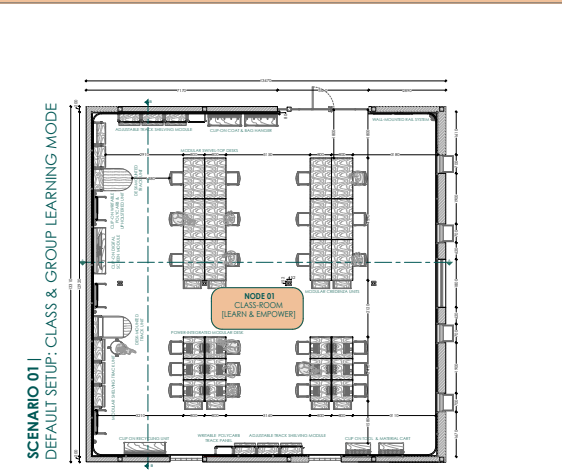


NIDDGES | CHOICE ARCHITECTURE

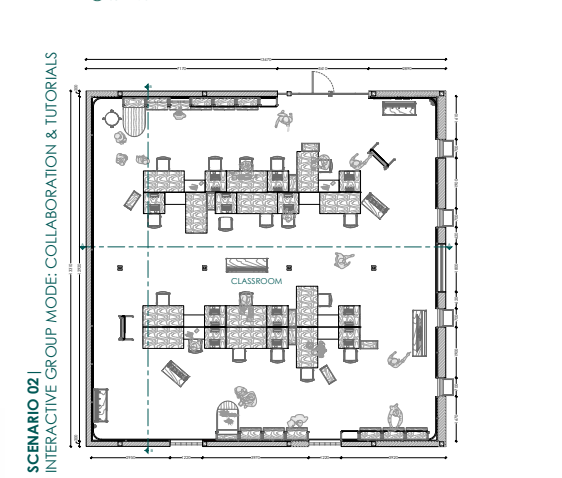


PLANNING SCENARIOS

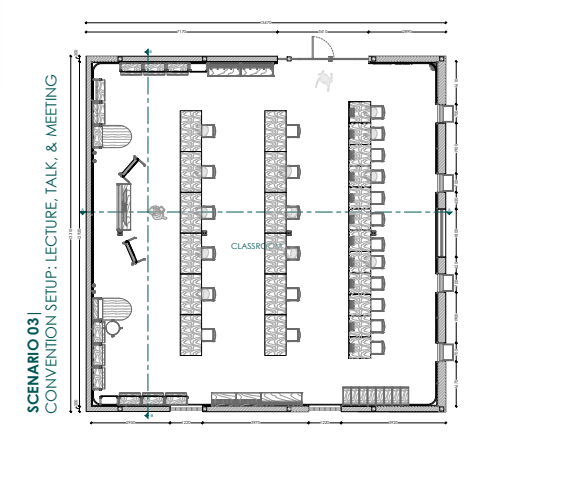
MULTIPLE CONFIGURABLE LAYOUTS | VERSATILITY & CHOICES



SCENARIO 01 |
DEFAULT SETUP: CLASS & GROUP LEARNING MODE

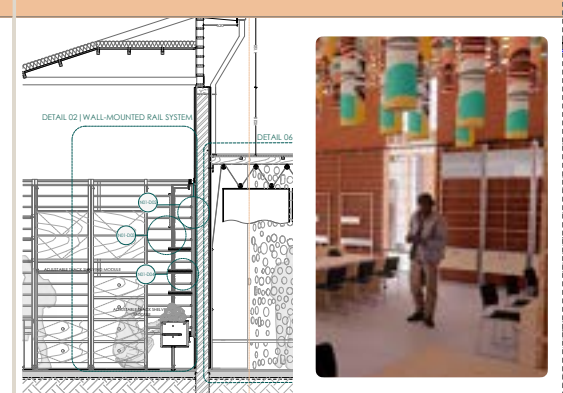


SCENARIO 02 |
INTERACTIVE GROUP MODE: COLLABORATION & TUTORIALS

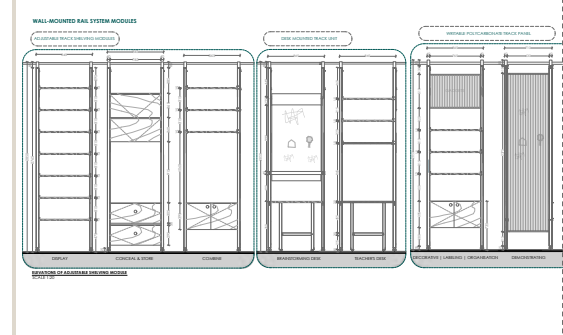


SCENARIO 03 |
CONVENTION SETUP: LECTURE, TALK, & MEETING

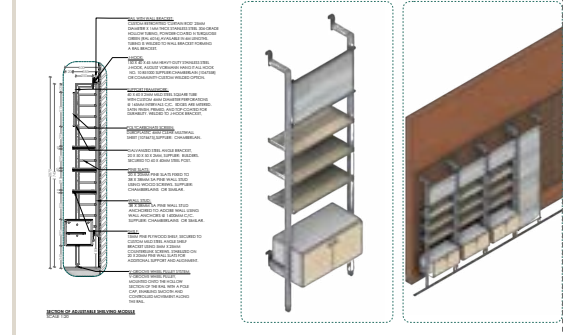
DETAIL 02: WALL MOUNTED RAIL SYSTEM



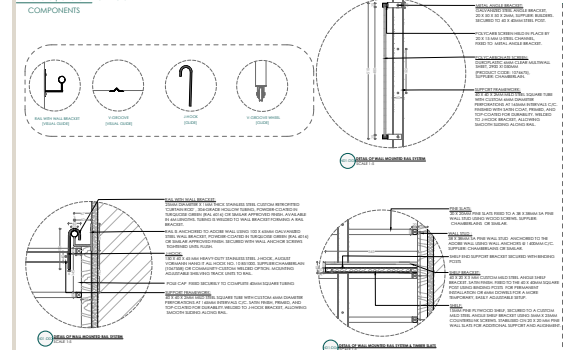
0102 MAKERSPACE SECTION B-B
SCALE 1:20



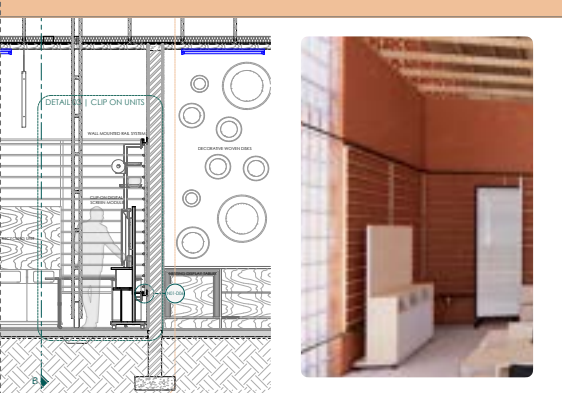
WALL-MOUNTED RAIL SYSTEM MODULES



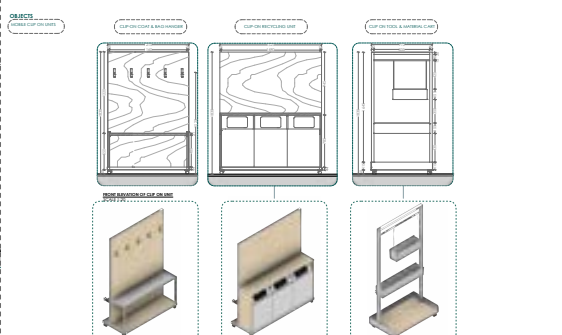
NIDDGES | CHOICE ARCHITECTURE



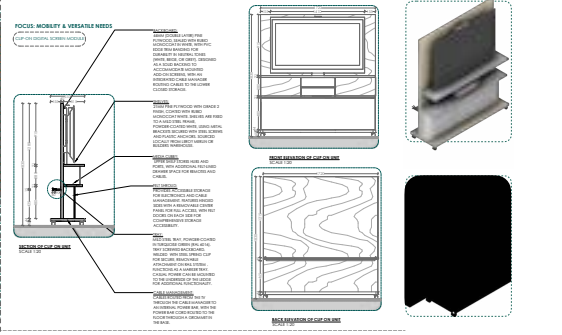
DETAIL 03: CLIP-ON UNITS



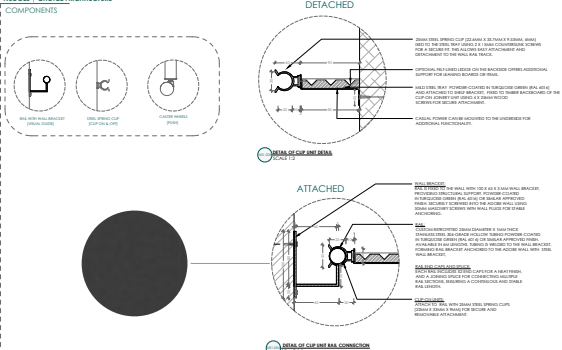
0103 MAKERSPACE SECTION A-A
SCALE 1:20



FOCUS: MOBILITY & VERSATILE NEEDS



NIDDGES | CHOICE ARCHITECTURE



NODE 02 | THE CO-WORKING COLLABORATIVE SPACE | I THINK, CREATE, CONNECT AND SHOWCASE

Purpose: This node is designed to foster interaction, teamwork, and creativity. It offers a flexible environment where users can work together on projects, share ideas, or engage in solo work within a communal setting.

Features and Design:

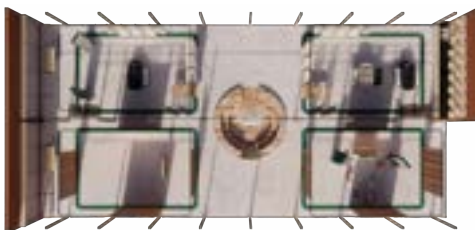
Movable Partitions and Ceiling Track System: The space features partitions that can be easily moved or reconfigured, and a ceiling track system with modular shelving, work surfaces, woven screens, pin-up boards and curtains. These elements allow the space to adapt to varying levels of privacy and collaboration, making it suitable for everything from focused solo work to group brainstorming sessions.

Central Conversation Pit: A sunken seating area in the centre of the space encourages informal discussions, community bonding, and relaxation. A spun recycled plastic cloud luminaire subtly brings your attention to this area. This layout encourages users to gather, collaborate, and share ideas, fostering a sense of belonging.

Individual Working Nooks and Multi-Purpose Seating: Integrated seating nooks provide privacy and quiet spaces for concentrated work, while also doubling as concealed storage areas underneath for tools and materials. This multi-purpose seating is distributed throughout the hub to support relaxation and reflection, aligning with the principle of *well-being*.

Interactive Acoustic Pulley System: The hallway features a felt acoustic panel with a pulley system that doubles as a pin-up board. This allows for exhibition and display of artwork, projects, announcements, and communal messages. Allowing users to showcase their skills, ideas, or work-in-progress. This enhances the principles of *nudge* and *incremental growth* by inspiring others to participate and take pride in community achievements. This encourages users to participate actively in the visual representation of the hub, enhancing a sense of community ownership.

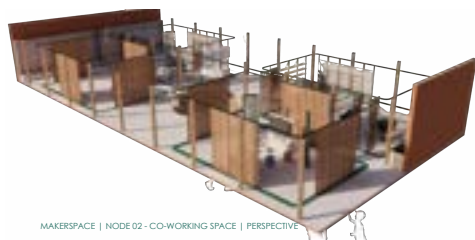
Impact: The *Co-Working and Collaborative Space* enables individuals to work independently or as part of a team in a setting that promotes flexibility, comfort, and collaboration. It is an ideal environment for fostering creative thinking, learning from peers, and cultivating a supportive community.



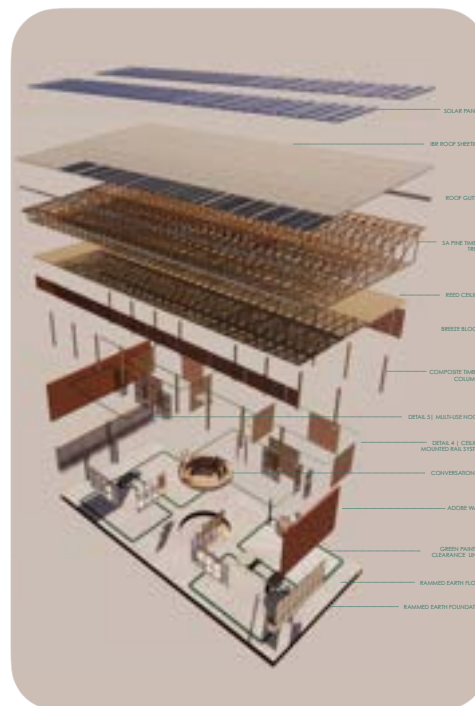
MAKERSPACE | NODE 02 - CO-WORKING SPACE | PERSPECTIVE PLAN



MAKERSPACE | NODE 02 - CO-WORKING SPACE | PERSPECTIVE SECTION C-C

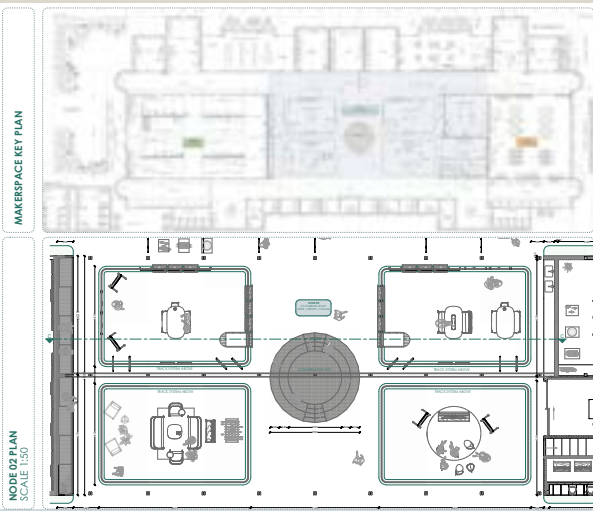


MAKERSPACE | NODE 02 - CO-WORKING SPACE | PERSPECTIVE

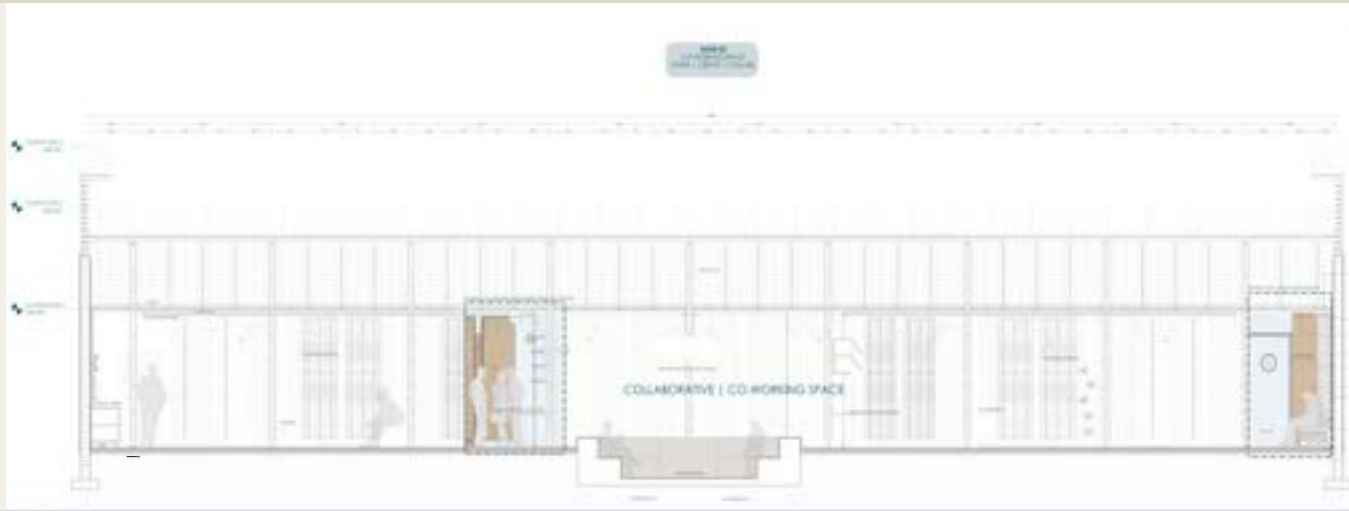


MAKERSPACE | NODE 02 - CO-WORKING SPACE | EXPLODED AXO



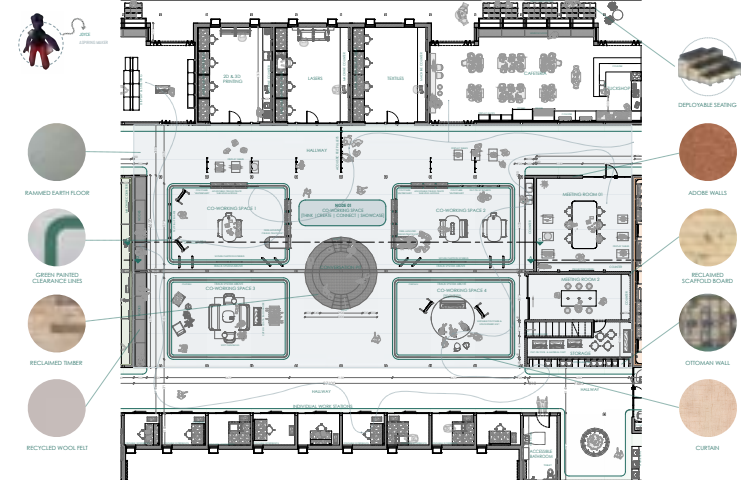


NODE 02 | CO-WORKING SECTION C-C
SCALE 1:20

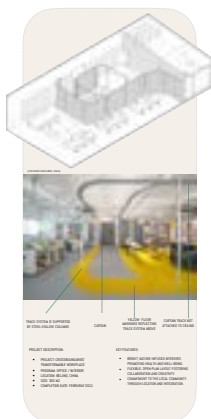


NODE 02: CO-WORKING COLLABORATION SPACE | MAKERSPACE
NUDGE FOR GOOD

CO-WORKING COLLABORATIVE SPACE USER JOURNEY



TRACK PRECEDENT



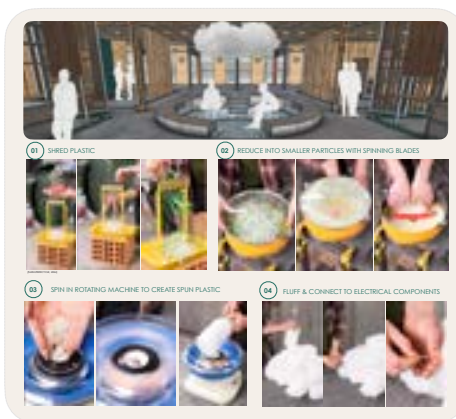
PROJECT DESCRIPTION

- RECLAIMED WOODEN BOARD
- GREEN PAINTED CLEANABLE TILES
- RECYCLED WOOL FELT
- RECYCLED TIMBER

CONCEPT

- RECYCLED WOODEN BOARD
- GREEN PAINTED CLEANABLE TILES
- RECYCLED TIMBER
- RECYCLED WOOL FELT

CRAFT | HOW TO MAKE THE CLOUD LUMINAIRE:



MAQUETTES

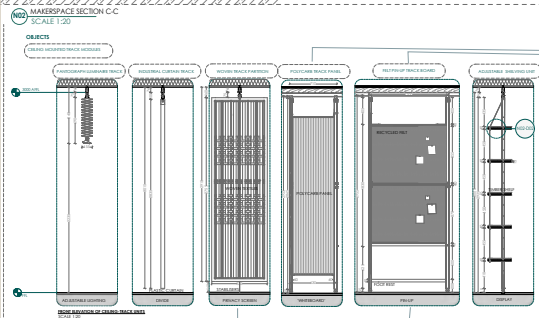
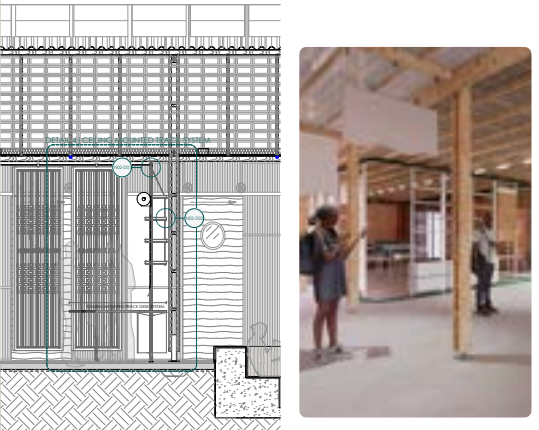


MOODBOARD

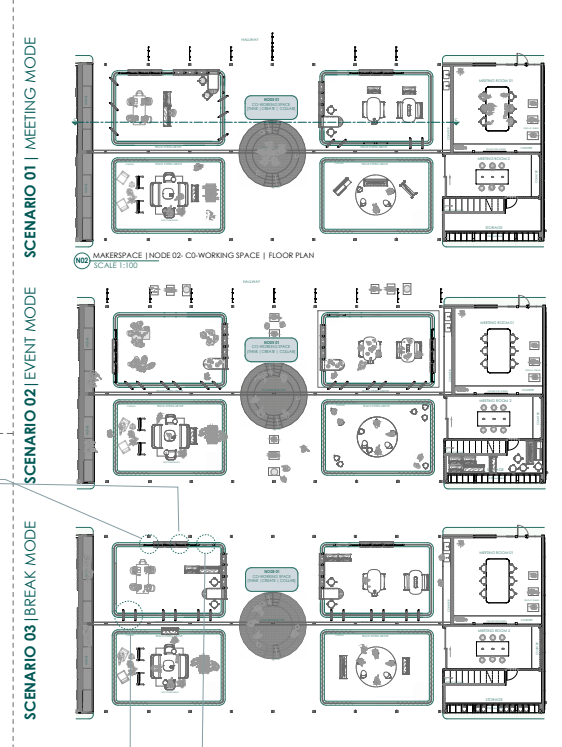


NODE 02: CO-WORKING COLLABORATION SPACE | MAKERSPACE
NUDGE FOR GOOD

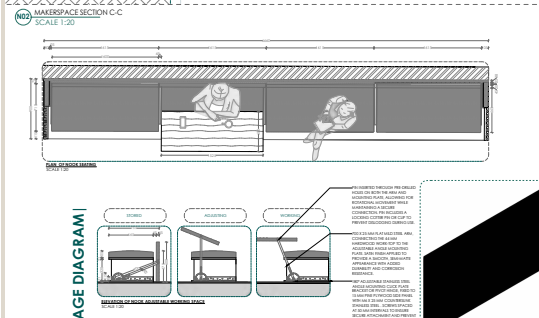
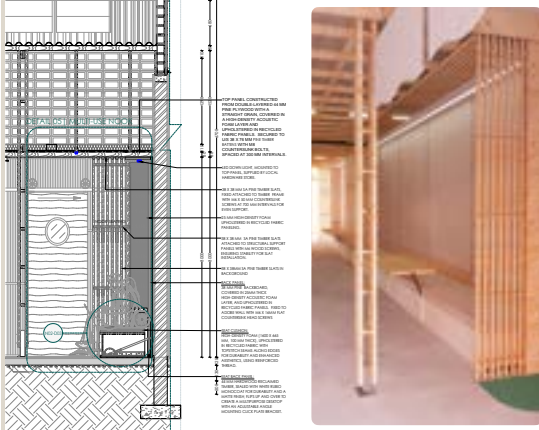
DETAIL 04: CEILING MOUNTED TRACK SYSTEM



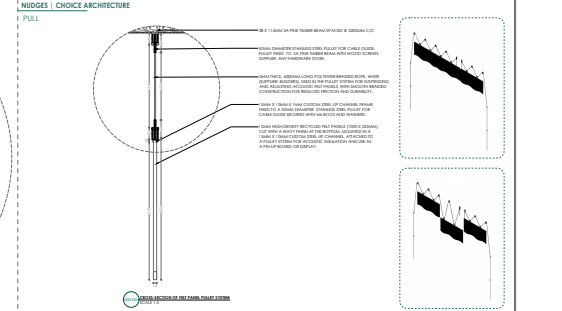
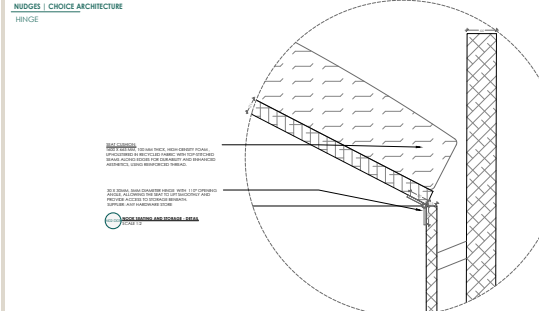
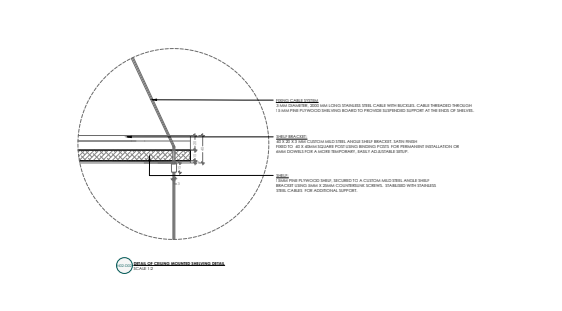
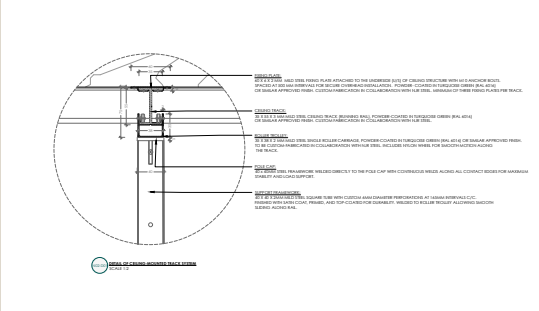
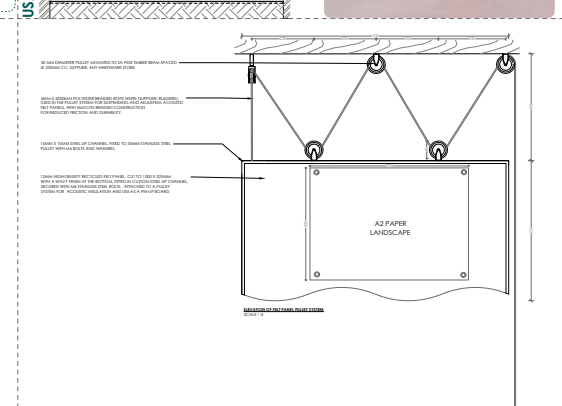
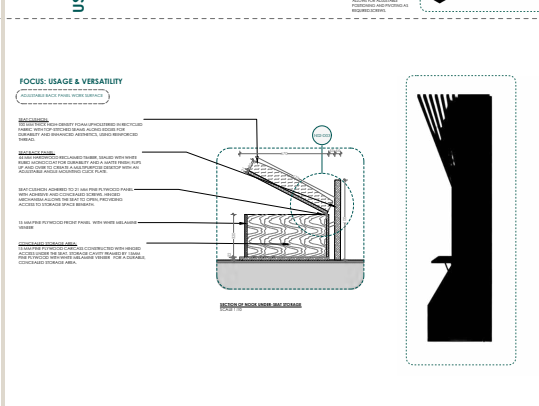
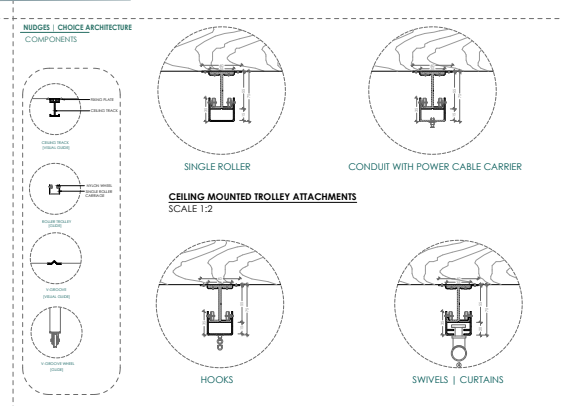
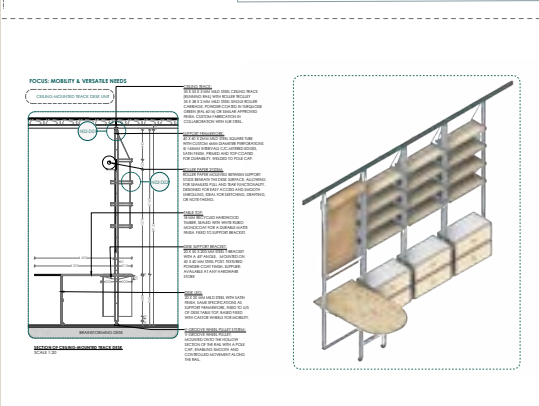
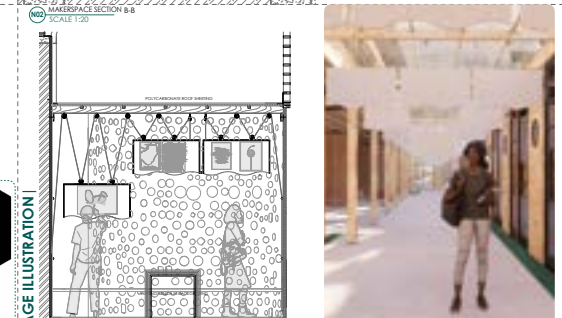
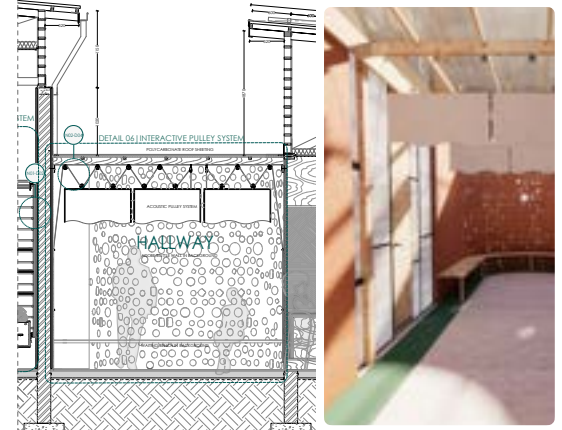
PLANNING SCENARIOS
MULTIPLE CONFIGURABLE LAYOUTS | VERSATILITY & CHOICES



DETAIL 05: MULTI-USE NOOK SEATING



DETAIL 06: INTERACTIVE PULLEY SYSTEM



NODE 03 | THE MACHINE SHOP | MAKE & BUILD

Purpose: The *Machine Shop* is the central node for hands-on skill-building, offering a space where participants can engage in woodworking, metalworking, and digital fabrication. This node emphasises the value of practical skills and traditional craftsmanship.

Features and Design:

Machine Counter and Pegboard Tool Storage: *The Machine Shop* is equipped with pegboard walls and non-slip workstations, allowing users to organise tools and materials for efficient, personalised work setups. This promotes a sense of responsibility and ownership, reinforcing the principle of *craft*.

Fold-Up Dry Joinery Workbenches: These workbenches are constructed using dry joinery techniques, making them durable, easy to assemble, and ideal for *incremental* modifications. They can be folded and stored when not in use, maximising space flexibility.

Pantograph Lighting System: A ceiling-mounted pantograph lighting system provides movable overhead lighting, allowing for targeted illumination in different workstations. This ensures user safety and supports detailed work, contributing to a well-lit, ergonomic space.

Impact: The *Machine Shop* serves as a catalyst for economic empowerment, allowing residents to gain skills that can lead to employment or entrepreneurship. With its emphasis on practical skills, it nurtures craftsmanship, self-sufficiency, and pride in one's abilities, reinforcing the hub's mission of community resilience and economic growth



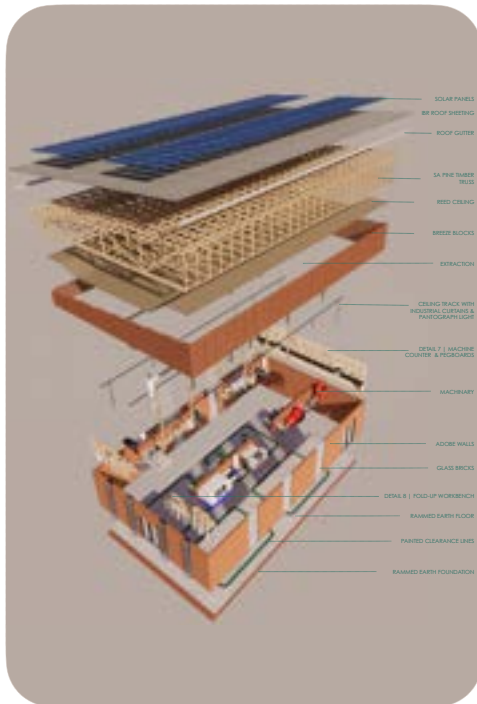
MAKERSPACE | NODE 03 - MACHINE SHOP | PERSPECTIVE PLAN



MAKERSPACE | NODE 03 - MACHINE SHOP | PERSPECTIVE SECTION D-D



MAKERSPACE | NODE 03 - MACHINE SHOP | PERSPECTIVE



MAKERSPACE | NODE 03 - MACHINE SHOP | EXPLODED AXO

