

Figure 1: Orientation map

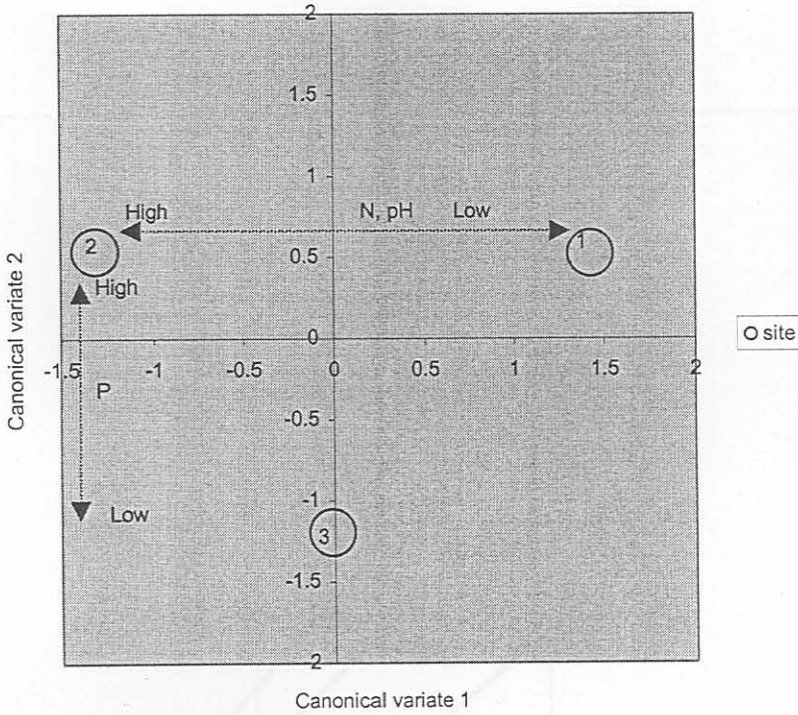


Figure 2: Canonical Variate Analysis, plot of mean scores of three sites at Hammarsdale Dam

Canonical Variate (CV) Means

	CV 1(x axis)	CV 2 (y axis)
Site 1	1.4264	0.5250
Site 2	-1.3141	0.5387
Site 3	-0.0122	-1.1972

Correlation matrix

	N	PH	P
U scores	-0.769	-0.664	-0.535
U scores	0.061	-0.509	0.795

The arrows in the figure represent the direction of the correlation.

67% of the variation is explained on the x-axis, while 33 % is explained on the y-axis.

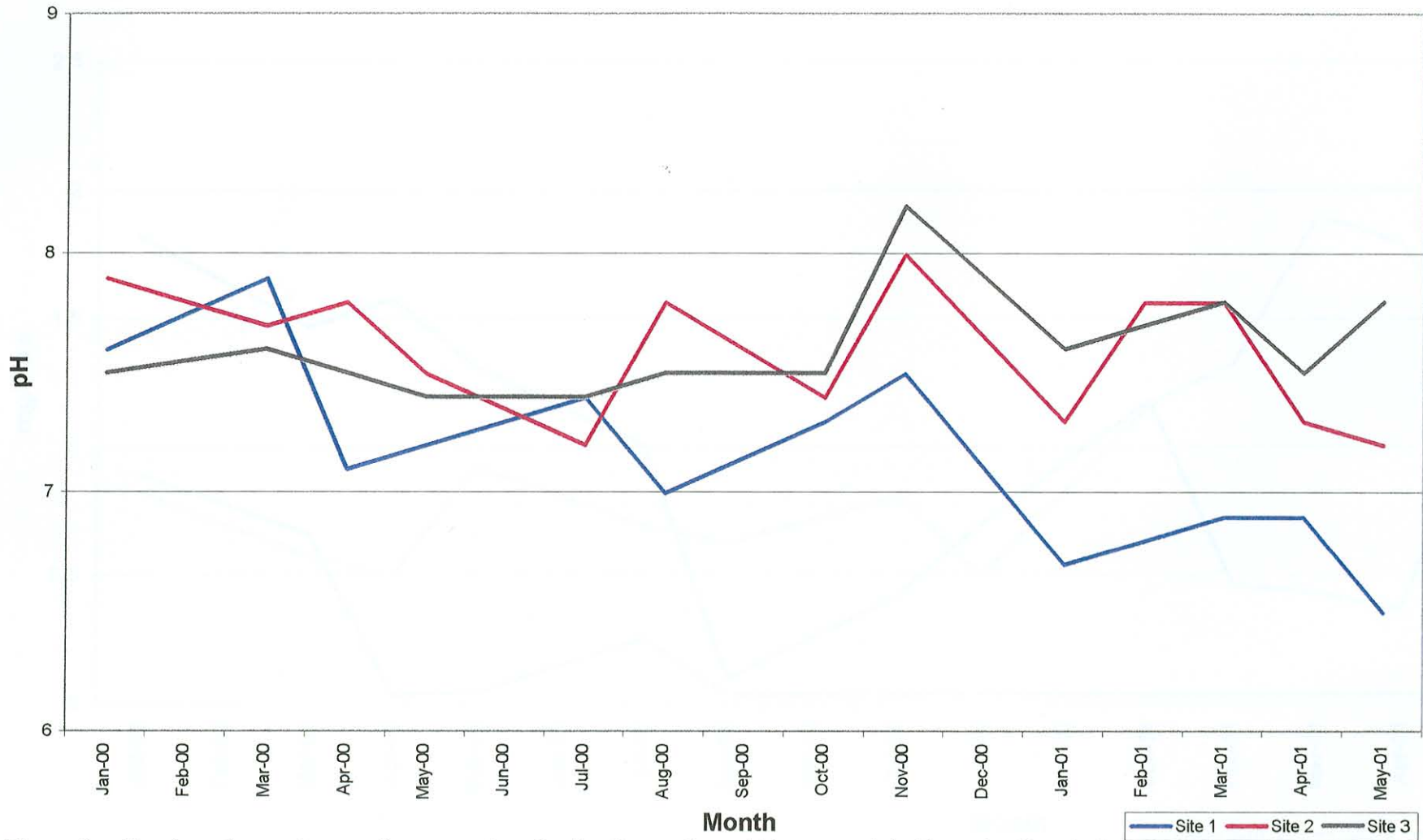


Figure 3: pH values for each sampling occasion, for the three sites at Hammarsdale Dam, for the study period

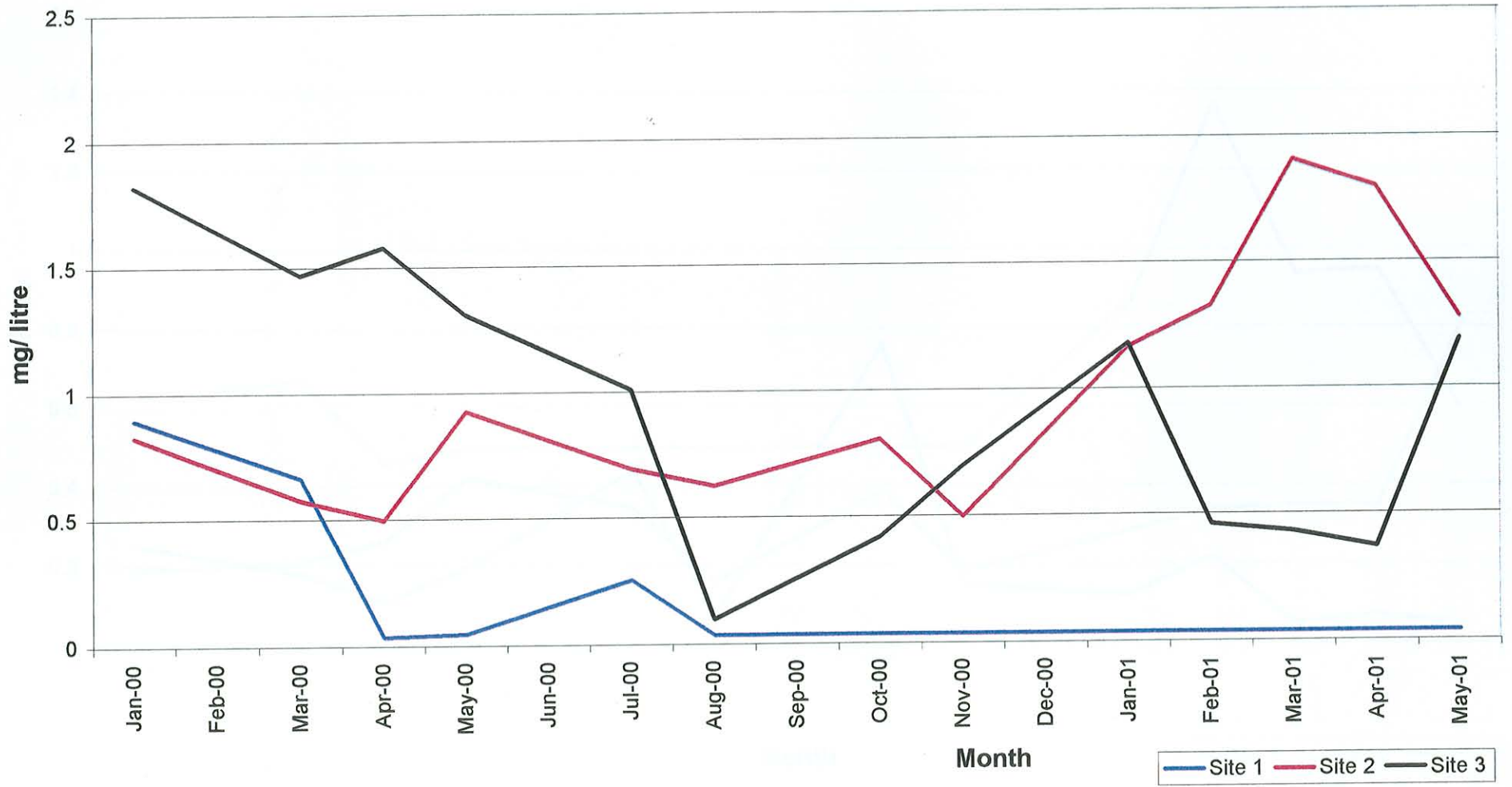


Figure 4: Total N, for each sampling occasion, for three sites at Hammarsdale Dam, for the study period

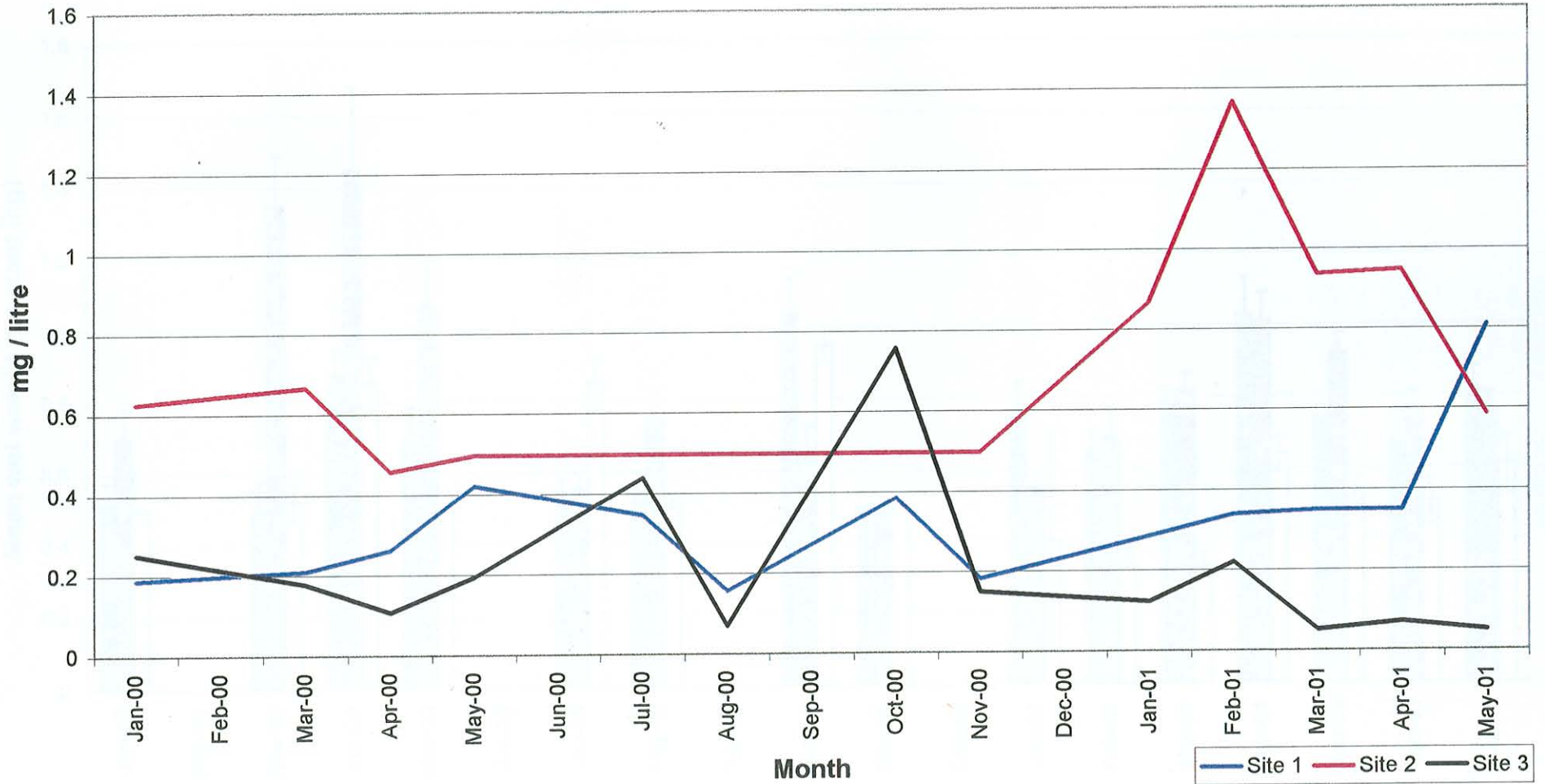


Figure 5: Total P, for each sampling occasion, for the three sites at Hammarsdale Dam, for the study period

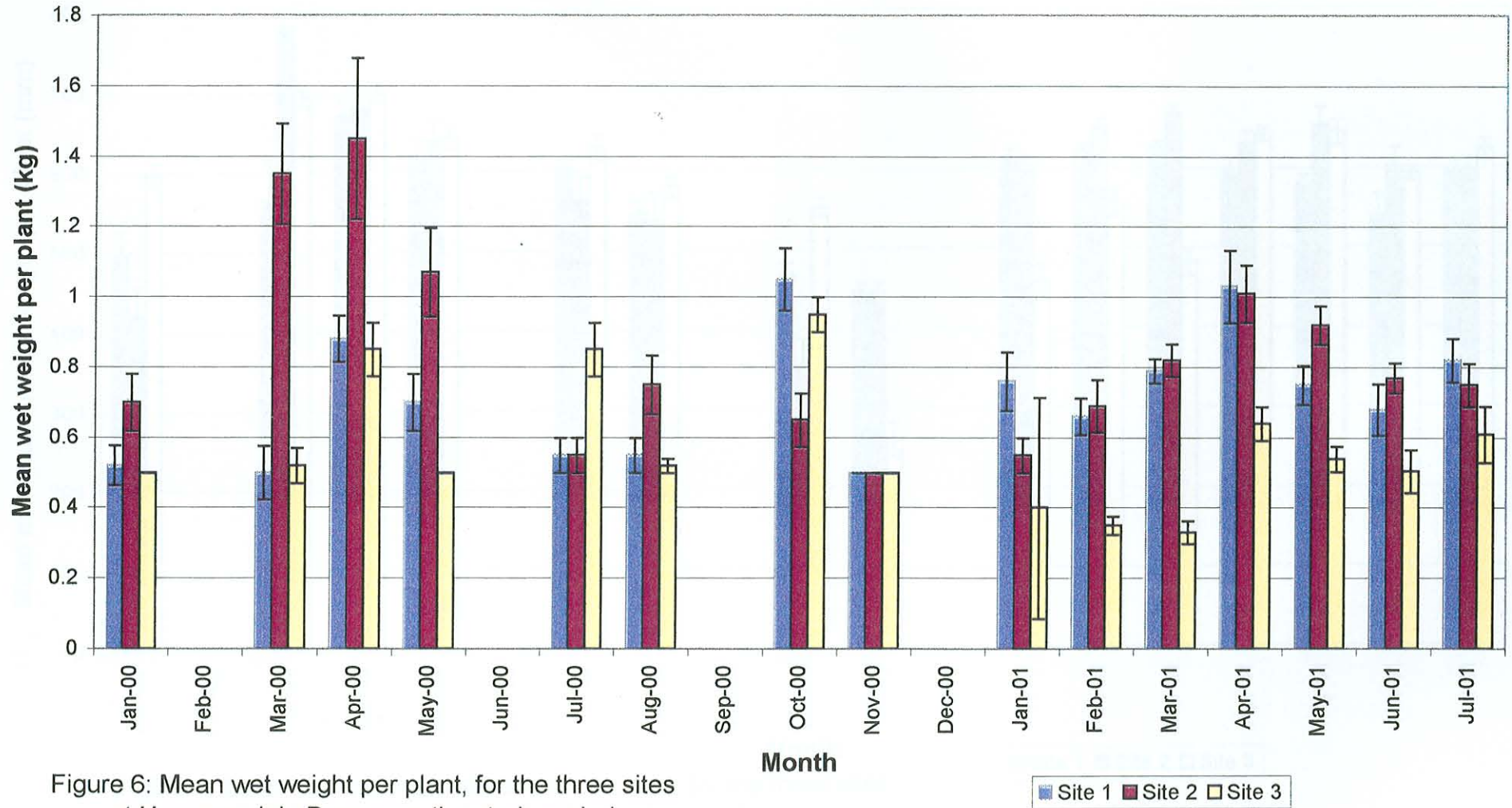


Figure 6: Mean wet weight per plant, for the three sites at Hammarsdale Dam, over the study period

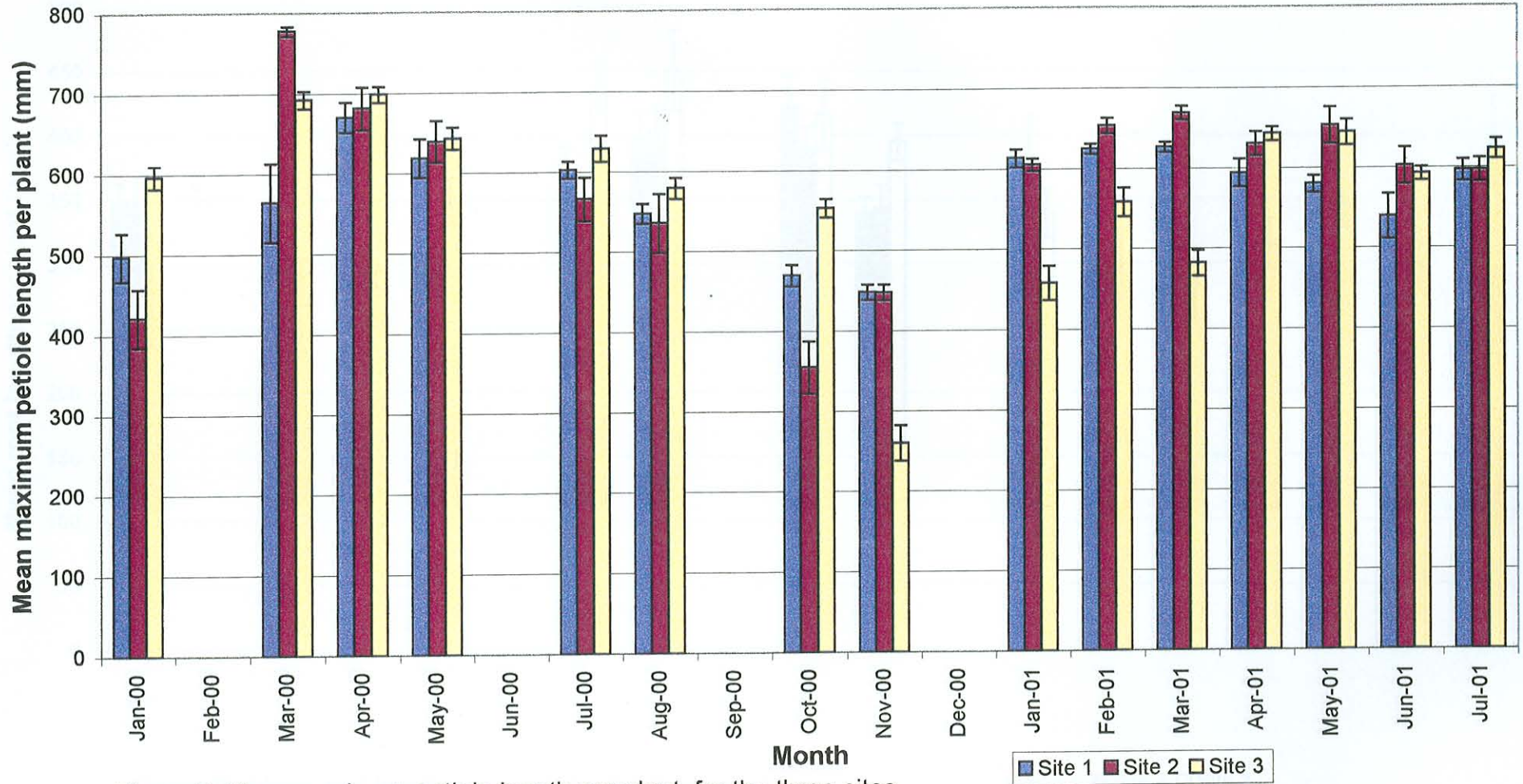


Figure 7: Mean maximum petiole length per plant, for the three sites at Hammarsdale Dam, for the study period

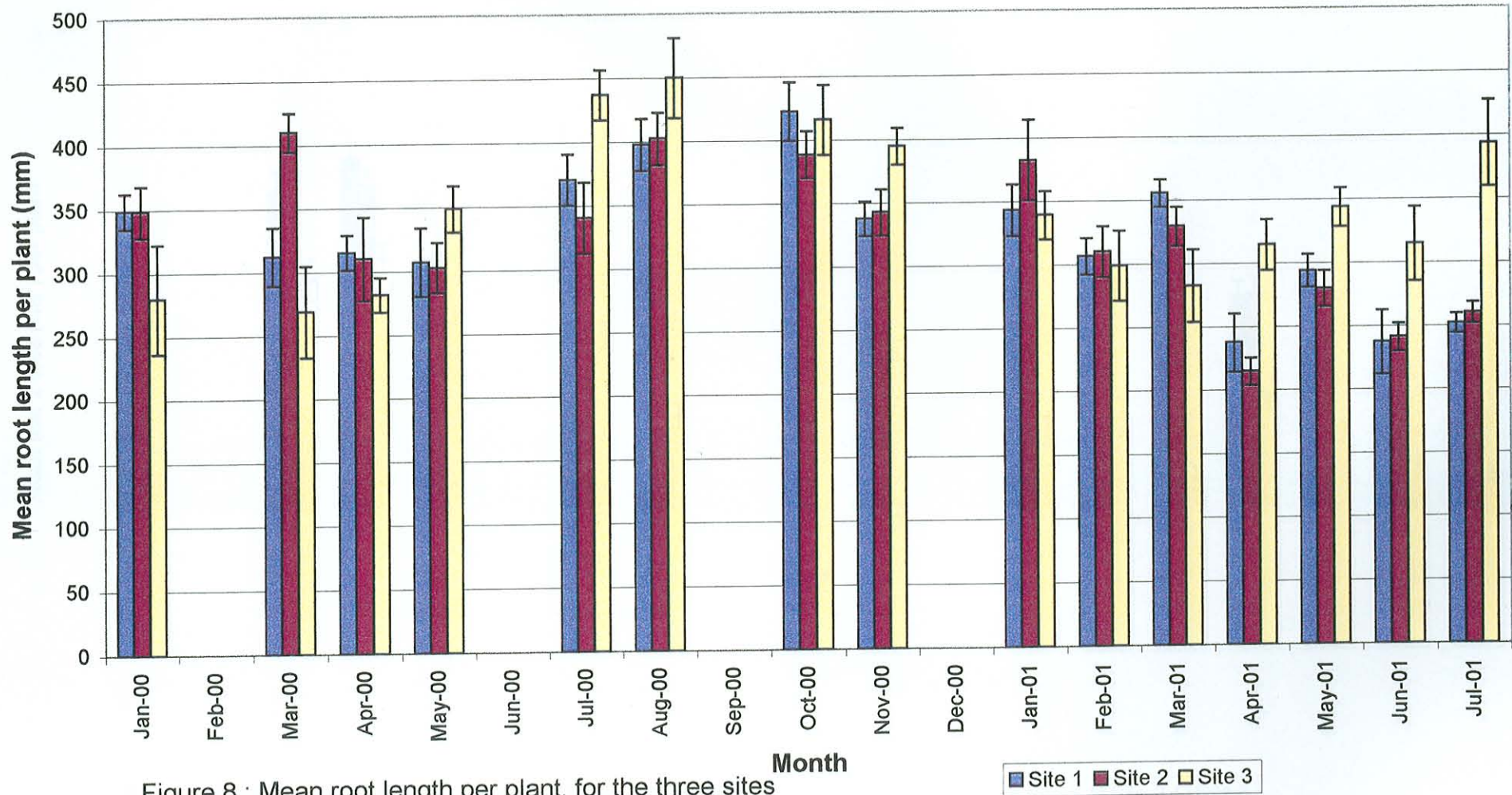


Figure 8 : Mean root length per plant, for the three sites at Hammarsdale Dam, for the study period

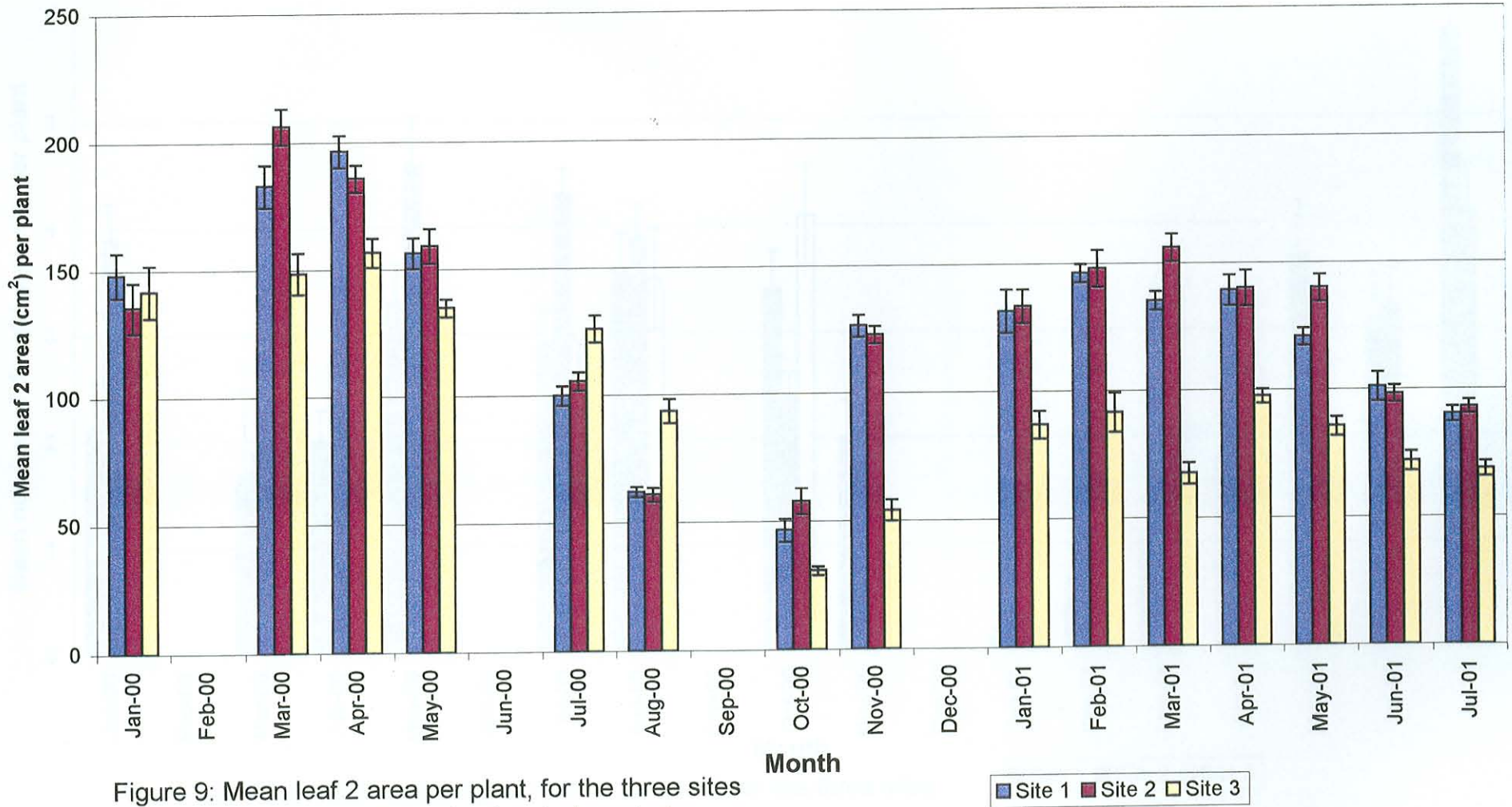


Figure 9: Mean leaf 2 area per plant, for the three sites at Hammarsdale Dam, for the study period

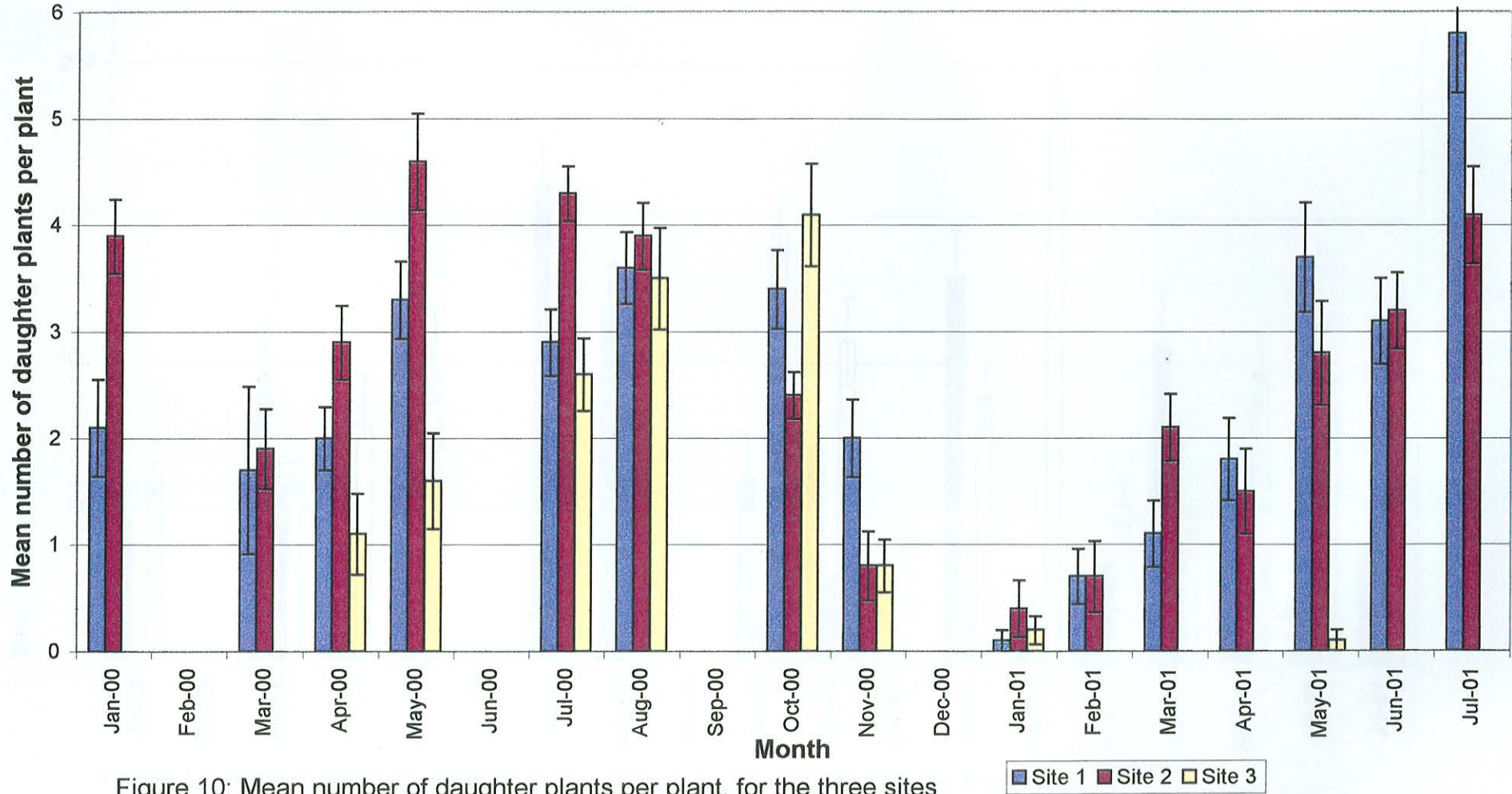
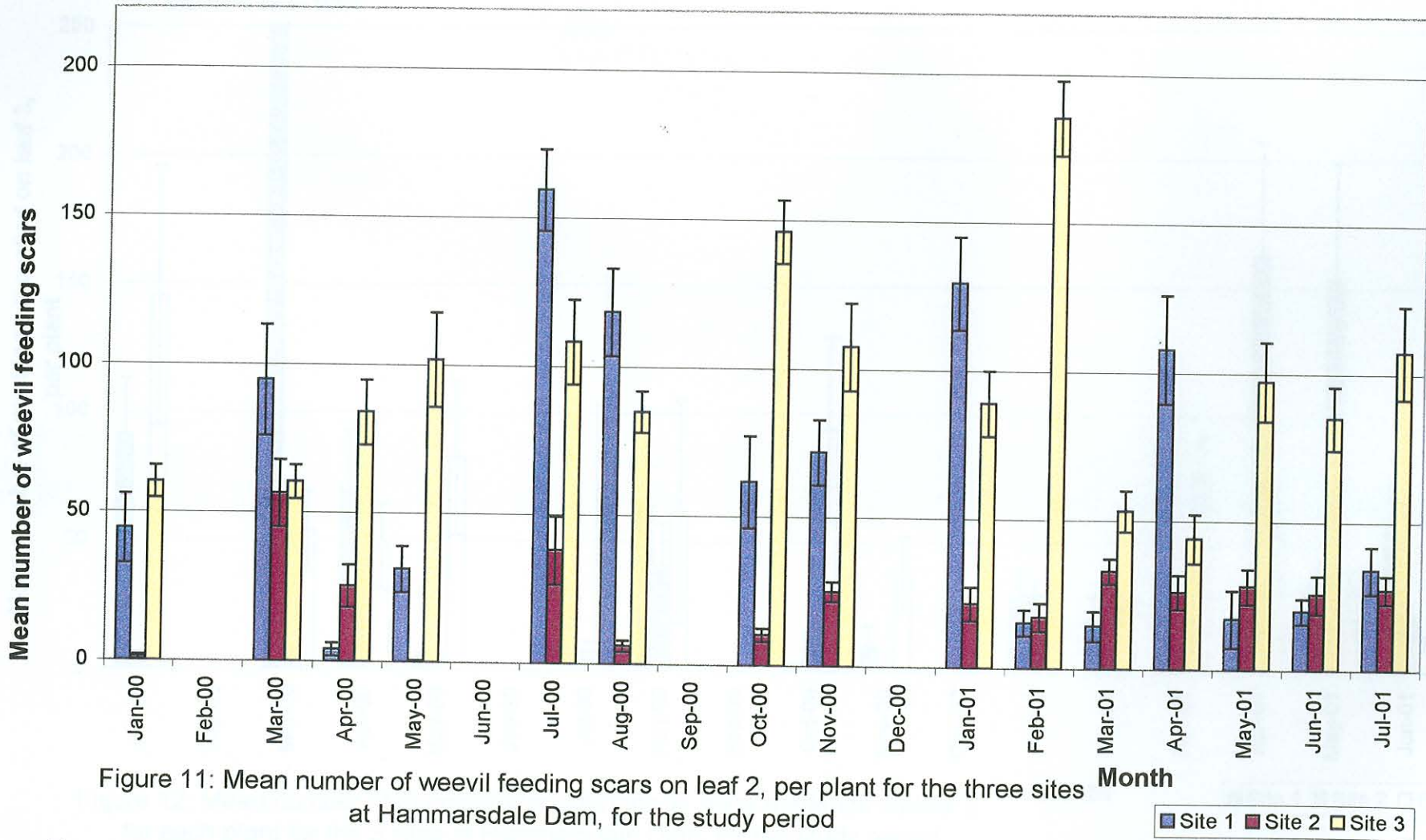


Figure 10: Mean number of daughter plants per plant, for the three sites at Hammarsdale Dam, for the study period



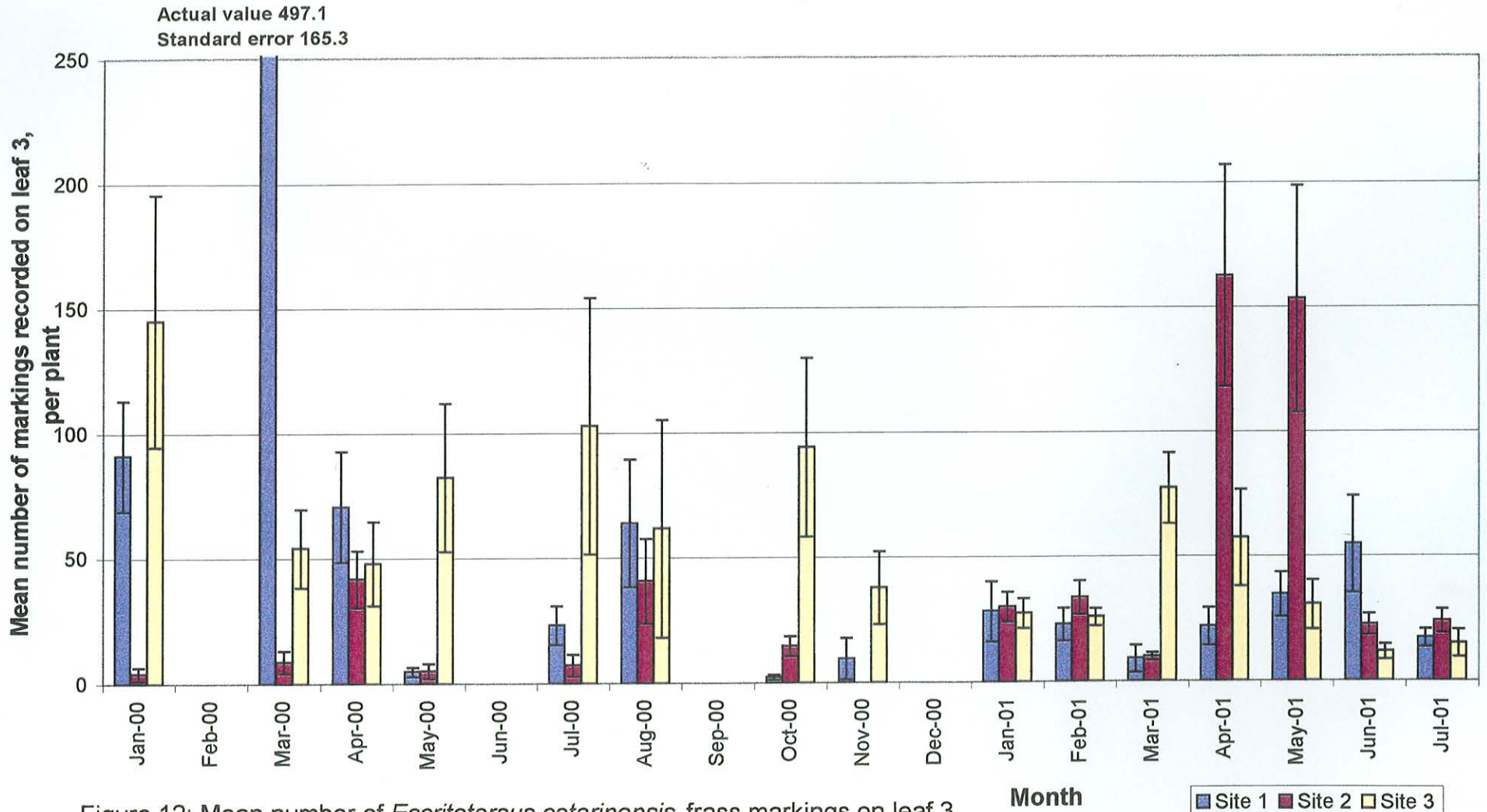


Figure 12: Mean number of *Eccritotarsus catarinensis* frass markings on leaf 3, for each plant for the 3 sites at Hammarsdale Dam, for the study period