

Supplementary Information

Biomass distribution of sympatric mammals in a European temperate forest

Andro Pleskalt¹, Sebastião Farias², Toni Vicedo³, Jose Manuel Álvarez-Martínez^{3,4}, José Valentín Rocas-Díaz^{3,4}, Carlo Meloro⁵, Soraia Pereira², Borja Cano⁶, Antonio Cruz⁶, Jesús García⁶, Pablo Gómez⁶, María Ángel Lamillar⁶, Elena Marsella⁶, Manuel Jesús Varas⁷, Elena Álvarez⁷, Fredrik Dalerum^{3,8,9}

1. Department of Biology, Faculty of Science, University of Zagreb, Zagreb, Croatia
2. Department of Statistics and Operational Research, University of Lisbon, Lisbon, Portugal
3. Biodiversity Research Institute (CSIC - University of Oviedo - Principality of Asturias), Mieres, Asturias, Spain
4. Department of Biology of Organisms and Systems, University of Oviedo, 33006, Oviedo, Asturias, Spain
5. Research Centre in Evolutionary Anthropology and Palaeoecology, School of Biological and Environmental Sciences, Liverpool John Moores University, Liverpool, UK
6. IMATEC Innovación S.L., Santoña, Cantabria, Spain
7. Wildlife Section, General Directorate of Biodiversity, Environment and Climate Change, Government of Cantabria, Santander, Cantabria, Spain
8. Department of Zoology, Stockholm University, Stockholm, Sweden
9. Mammal Research Institute, Department of Zoology and Entomology, University of Pretoria, Pretoria, South Africa

Table S1. Number of observations, number of stations with observations, body mass (kg) , home range sizes (km²) and group sizes of 10 mammal species in the Cantabrian range, northern Spain. Body masses were taken from Blanco (1998) and are expressed in kilograms. Home ranges were estimated as the median of reported home range sizes from multiple sources and are expressed in square km.

Order	Scientific name	Common name	N obs	N stations	Body mass	Home range size	Group size	Home range reference
Artiodactyla	<i>Capreolus capreolus</i>	Roe deer	4285	82	24.5	0.3	1	Blanco (1998), Cederlund et al. (2004)
	<i>Cervus elaphus</i>	Red deer	4939	84	72	4.7	5	Blanco (1998)
	<i>Sus scrofa</i>	Wild boar	5412	85	75	7.79	4	Garza et al. (2018), Cavazza et al. (2023)
Carnivora	<i>Canis lupus</i>	Wolf	851	81	30	182.75	6	Ciucci et al. (2009), Kusak et al. (2005), Cederlund G et al. (2004), Blanco (1998)
	<i>Felis silvestris</i>	European wildcat	726	65	4.25	3.78	1	Blanco (1998)
	<i>Martes martes</i>	Pine marten	3218	85	1.3	6.3	1	Blanco (1998)
	<i>Meles meles</i>	Eurasian badger	1396	77	12	1.1	1	Acevedo et al. (2019)
	<i>Ursus arctos</i>	Brown bear	408	62	99	128.8	1	Todorov et al. (2020), Huber and Roth (1993), De Angelis et al. (2021)
	<i>Vulpes vulpes</i>	Red fox	9320	85	6	1.49	1	Cavallini (1996), Meia and Weber (1995), Janko et al. (2012), Blanco (1998)
Rodentia	<i>Sciurus vulgaris</i>	Red squirrel	649	53	0.3	0.48	1	Lurz (2010), Blanco (1998)

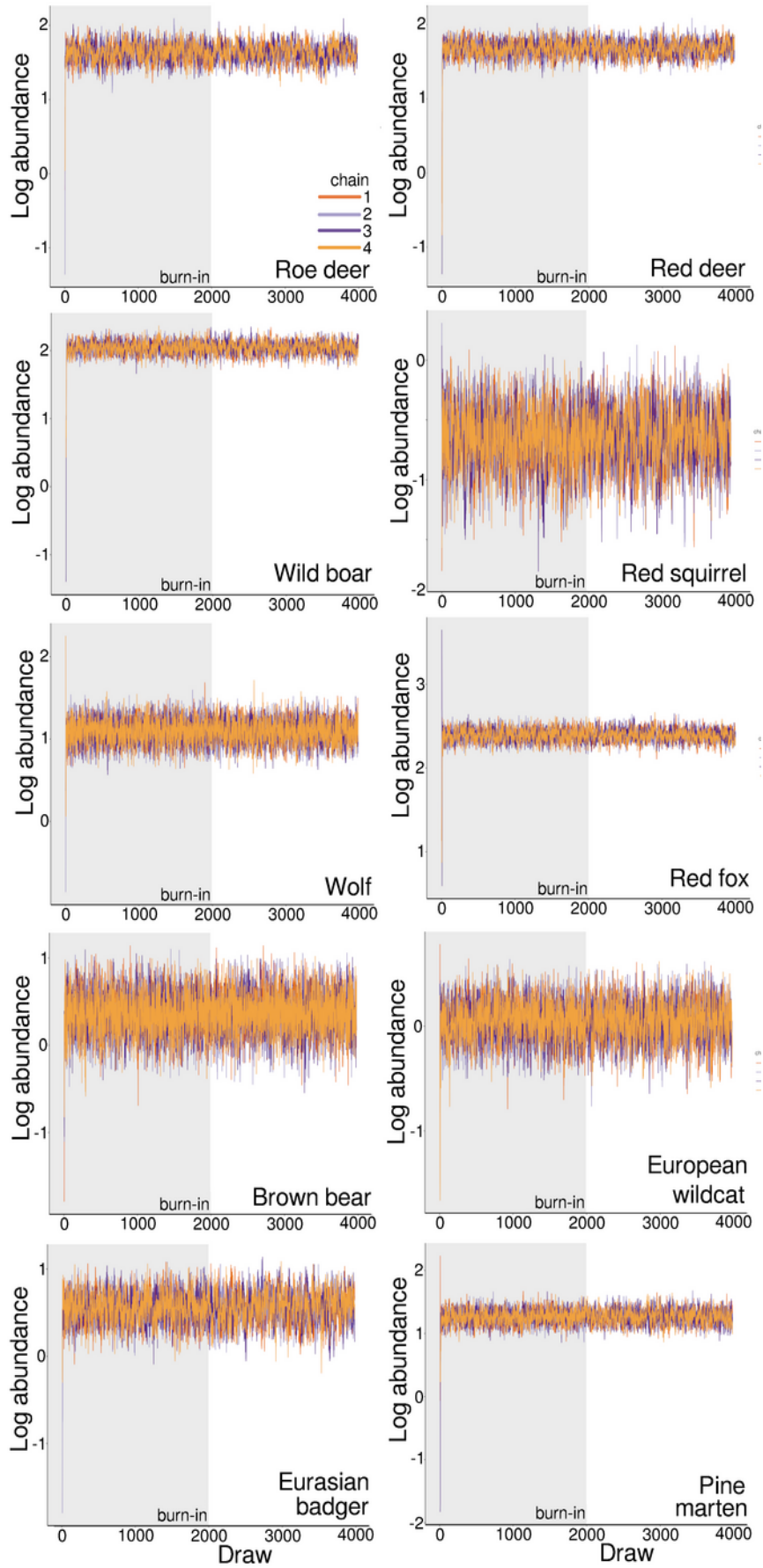


Figure S1. Posterior draws of the average abundance parameter for 10 mammal species in each of the four Markov chains estimated from a Bayesian implementation of the N-mixture model fitted to camera trap data. The Gelman-Rubin coefficient was 1.0 for all species, indicating convergence of the posterior draws.

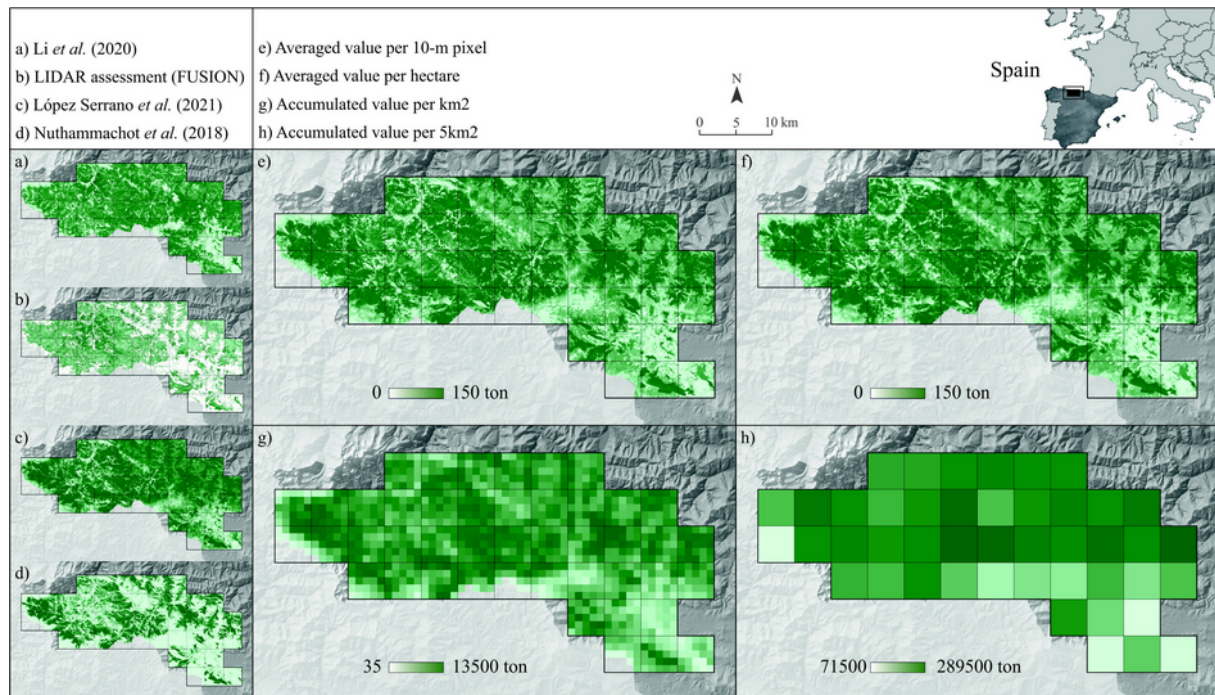


Figure S2. Workflow for estimating total above ground plant biomass, including four individual models based on Sentinel-2 imagery (a,c,d) and Lidar (b), averaged values per 10x10m pixel (e), averaged values per hectare (10x10 pixels, f), as well as aggregated values at 1km² (g) and the 5km² cells used for a camera trapping grid in south western Cantabria (h).

References

- Acevedo P, Prieto M, Quirós P, Merediz I, de Juan L, Infantes-Lorenzo JA, Triguero-Ocaña R, Balseiro A. 2019 Tuberculosis epidemiology and badger (*Meles meles*) spatial ecology in a hot-spot area in Atlantic Spain. *Pathogens* **8**, 292. (doi:10.3390/pathogens8040292)
- Blanco JC. 1998 *Mamíferos de España*. Editorial Planeta, Barcelona, Spain
- Cavallini P 1996 Variation in the social system of the red fox. *Eth. Ecol. Evol* **8**, 323–342. (doi:10.1080/08927014.1996.9522906)
- Cavazza S, Brogi R, Apollonio M. 2023 Sex-specific seasonal variations of wild boar distance traveled and home range size. *Curr. Zool.* **70**, 284-290. (doi:10.1093/cz/zoad021)
- Cederlund G, Liberg O, Kjellander P. 2004 Bockjakt ändrar inte reviren. In Jansson G, Seiler C, Andrén H (Eds.) *Skogsvilt III: Vilt och landskap i förändring*, pp.107-110. Grimsö forskningsstation, Ridderhyttan, Sweden.
- Ciucci P, Boitani L, Francisci F, Andreoli G. 2009 Home range, activity and movements of a wolf pack in central Italy. *J. Zool.* **243**, 803-819. (doi:10.1111/j.1469-7998.1997.tb01977.x)
- De Angelis D, Huber D, Reljic S, Ciucci P, Kusak J. 2021 Factors affecting the home range of Dinaric-Pindos brown bears. *J. Mamm.* **102**, 481-493. (doi:10.1093/jmammal/gyab018)
- Garza SJ, Tabak MA, Miller RS, Farnsworth ML, Burdett CL 2018 Abiotic and biotic influences on home-range size of wild pigs (*Sus scrofa*). *J. Mamm.* **99**, 97-107. (doi:10.1093/jmammal/gyx154)
- Janko C, Schröder W, Linke S, König A. 2012 Space use and resting site selection of red foxes (*Vulpes vulpes*) living near villages and small towns in southern Germany. *Act. Theriol.* **57**, 245-250. (doi:10.1007/s13364-012-0074-0)
- Huber D, Roth HU. 1993 Movements of European brown bears in Croatia. *Act. Theriol.* **38**, 151-159. (doi:10.4098/AT.arch.93-13)

- Kusak J, Skrbinišek AM, Huber D. 2005 Home ranges, movements, and activity of wolves (*Canis lupus*) in the Dalmatian part of Dinarids, Croatia. *Eur. J. Wildl. Res.* **51**, 254–262. (doi:10.1007/s10344-005-0111-2)
- Li L, Zhou X, Chen L, Chen L, Zhang Y, Liu Y. 2020. Estimating urban vegetation biomass from Sentinel-2A image data. *Forests* **11**, 125. (doi:10.3390/f11020125)
- López Serrano PM, Vega Nieva DJ, Ramírez Aldaba H, García Montiel E, Corral Rivas JJ. 2021 Estimation of forest parameters using Sentinel 2A data in Pueblo Nuevo, state of Durango. *Rev. Mex. Cienc. Forest.* **12**, 81-106. (doi:10.29298/rmcf.v12i68.1075)
- Lurz P. 2010 *Red Squirrels: Naturally Scottish*. Scottish Natural Heritage, Redgorton, UK.
- Meia JS, Weber JM. 1995 Home ranges and movements of red foxes in central Europe: stability despite environmental changes. *Can. J. Zool.* **73**, 1960-1966. (doi:10.1139/z95-230)
- Nuthammachot N, Phairuang W, Wicaksono P, Sayektiningsih T. 2018 Estimating aboveground biomass on private forest using Sentinel-2 imagery. *J. Sens.* **2018**, 6745629. (doi:10.1155/2018/6745629)
- Todorov V, Zlatanova D, Valchinkova K. 2020 Home range, mobility and hibernation of brown bears (*Ursus arctos*, Ursidae) in areas with supplementary feeding. *Nat. Cons. Res.* **5**, 1-15. (doi:10.24189/ncr.2020.050)