

Ecosphere

Special Feature: Insights from Subseasonal Imaging Spectroscopy

Intrinsic dimensionality as a metric for temporal plant diversity evaluation: Case study from the SHIFT campaign

Kerry Cawse-Nicholson, K. Dana Chadwick, Philip G. Brodrick, Michael Kiper, David R. Thompson, David Schimel, Charles E. Miller, Philip A. Townsend, Luciana F. Alves, Alexey N. Shiklomanov, Moses A. Cho, Abel Ramoelo, Philemon Tsele, Nobuhle Majozi, Zoe A. Pierrat, Simon Ferrier

Corresponding author: Kerry Cawse-Nicholson (Kerry-anne.cawse-nicholson@jpl.nasa.gov)

Appendix S3

Vegetation fraction also impacts the comparison between ID and field data. If an endmember is so (spatially or spectrally) small that its contribution to the overall observed spectrum is below the noise levels, then that endmember will not count towards the ID. Figure S1 shows that correlation improves as less abundant vegetation are excluded from the analysis. For all figures, plots with blank entries for vegetation fractional cover are ignored, and species marked as “NPV” (non-photosynthetic vegetation) are not added to the species count.

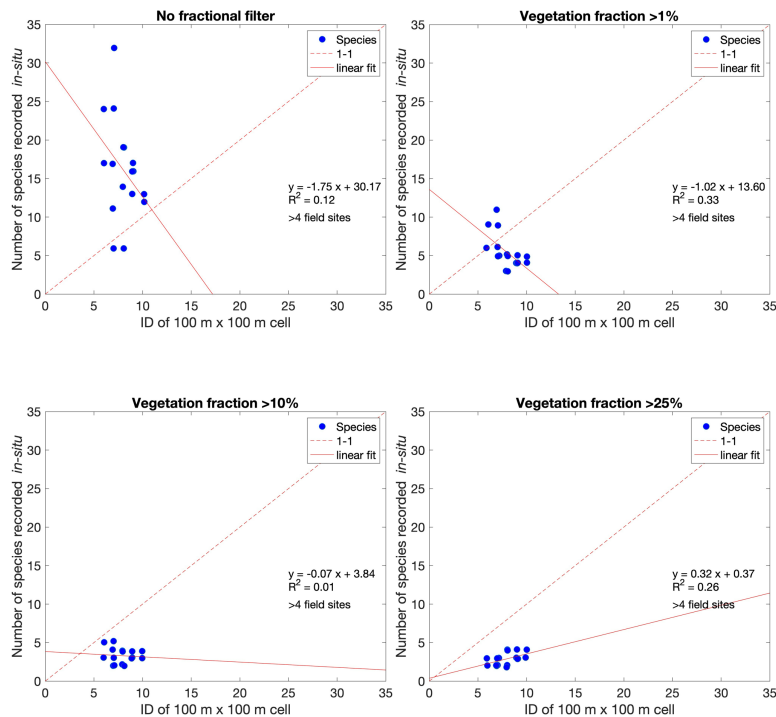


Figure S1: Field data are compared to ID within 100 m × 100 m cells, where the validation is only considered if more than four field sites are present within a cell. Here we see the impact of vegetation abundance thresholding. ID does not detect rare species that make up a very small percentage of the site, recalling that the field sites are already much smaller than the ID cells. A small amount of jitter is added to each point so that overlapping data values can be seen.