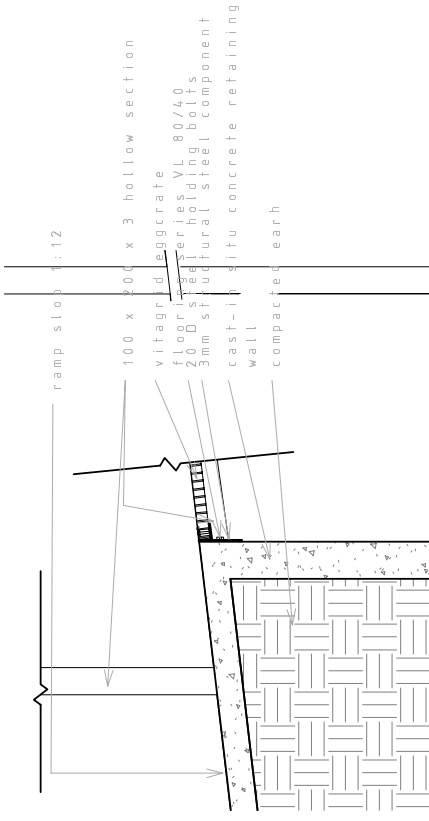
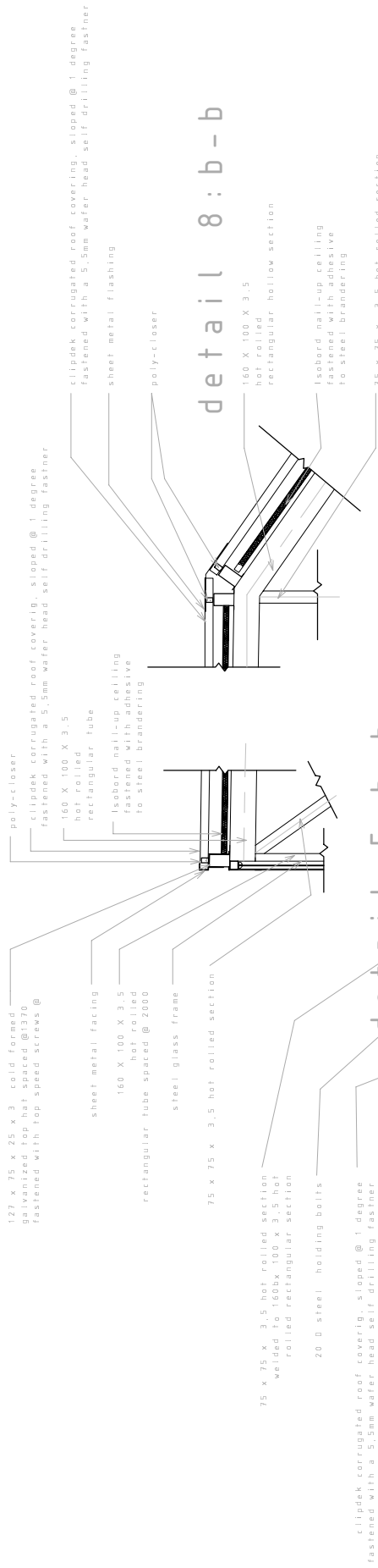


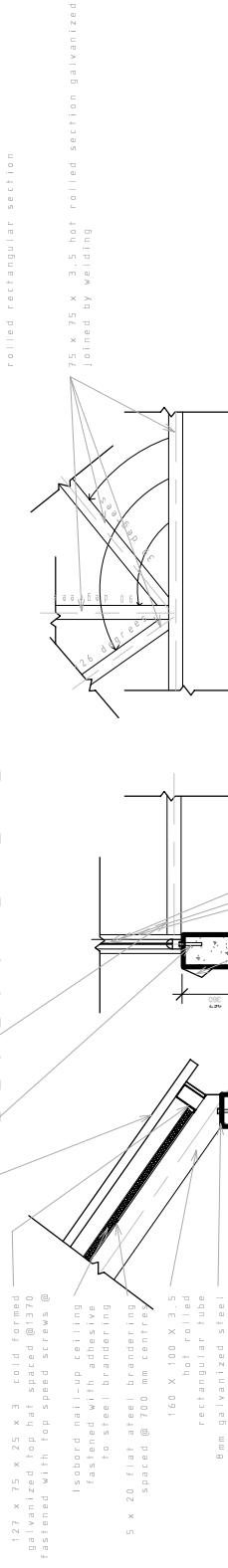
detail 6:
level 20000



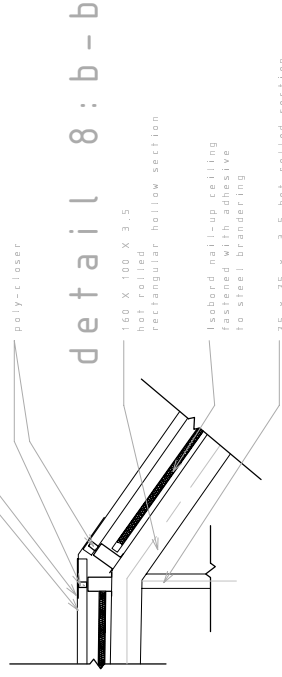
detail 10:
level 10000



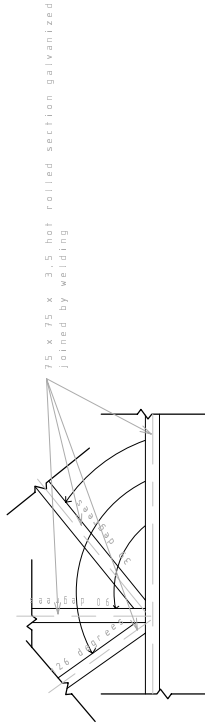
detail 5 : b - b



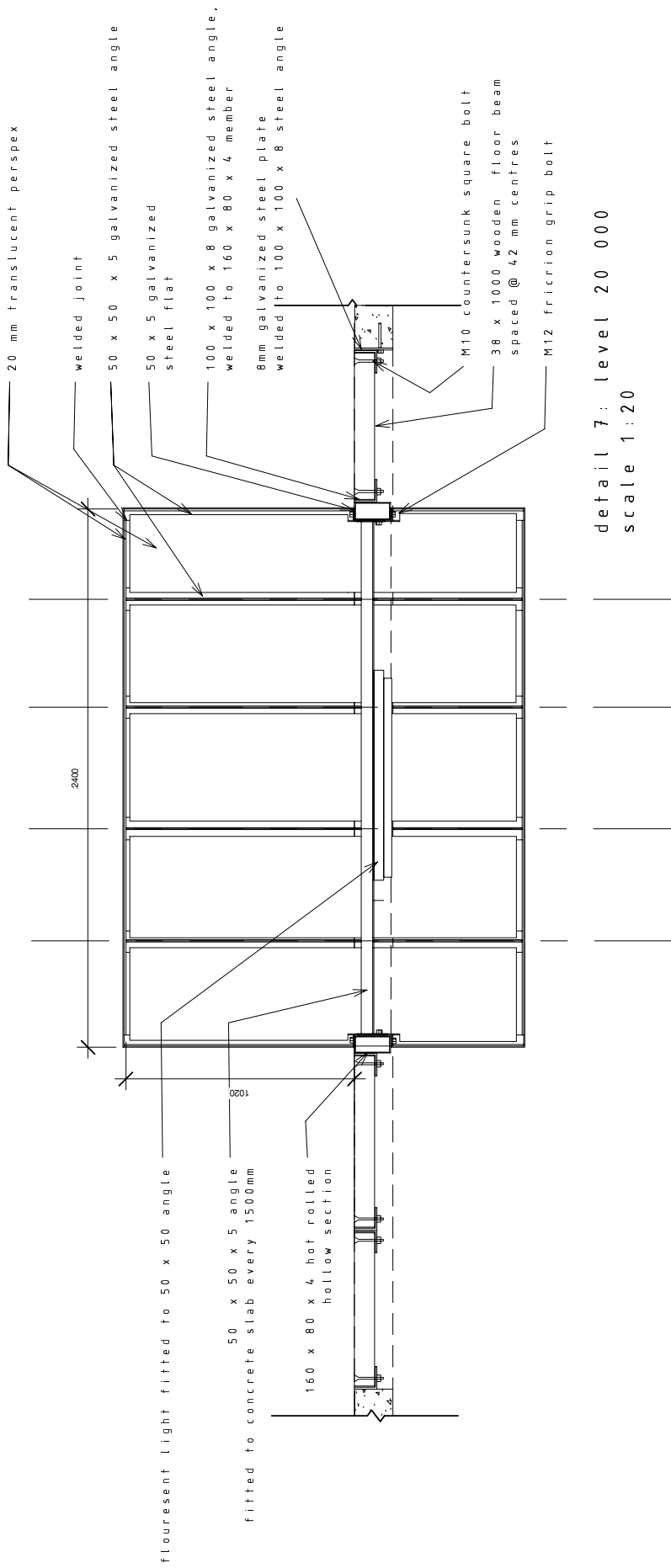
detail 4 : b - b



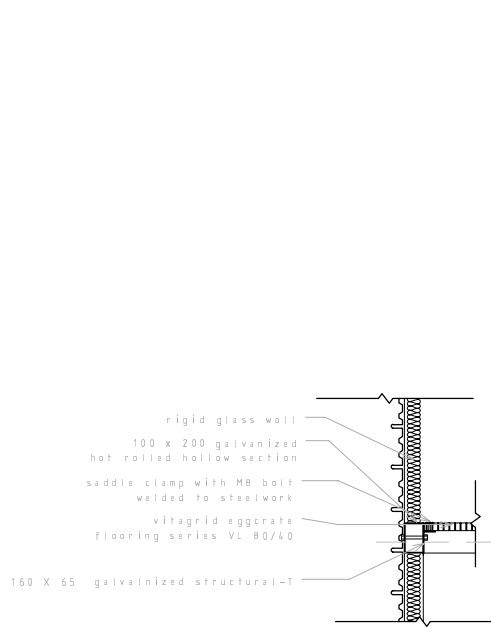
detail 8 : b - b



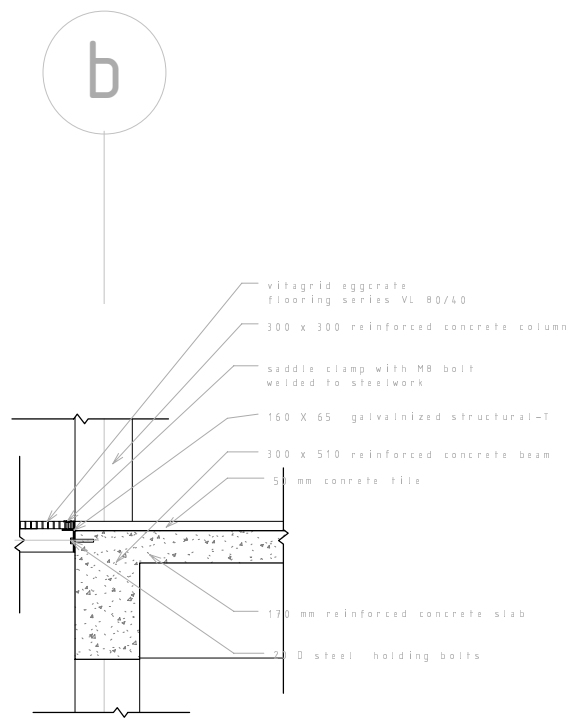
detail 9 : b - b



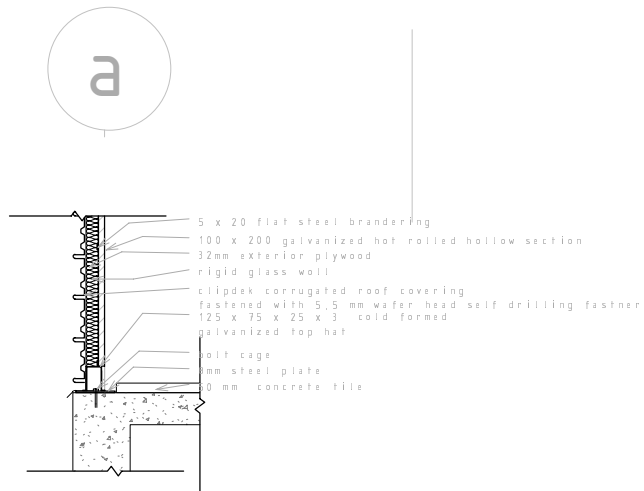
detail 7: level 20 000
 scale 1:20



detail 3: a-a

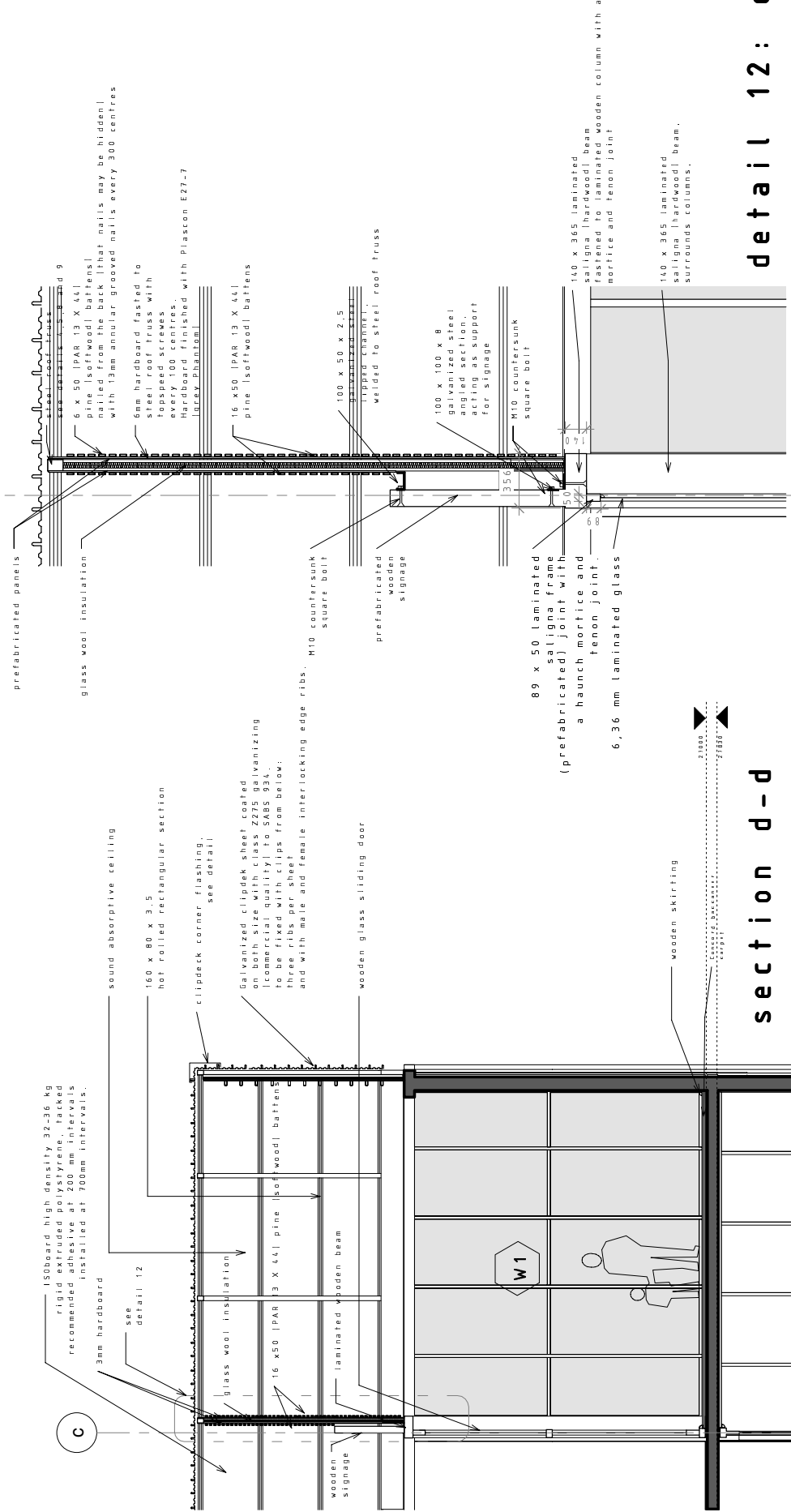


detail 2: a-a



detail 1: a-a

C



ISOboard high density 32-36 kg rigid extruded polystyrene, packed recommended absorptive air voids installed at 700mm intervals.

3mm hardboard

see detail 12

sound absorptive ceiling

160 x 80 x 3.5 hot rolled rectangular section

clipdeck corner flashing, see detail

Galvanized clipdek sheet coated on both size with class Z275 galvanizing (commercial quality) to SABS 934. to be fixed with clips from below. three ribs per sheet and with male and female interlocking edge ribs.

wooden glass sliding door

wooden signage

laminated wooden beam

wooden skirting

W1

prefabricated panels

glass wool insulation

6 x 50 IPAR 13 X 44 pine Isofwood baffles nailed from the back (that nails may be hidden) with 13mm annular grooved nails every 300 centres

6mm hardboard fasted to steel roof truss with spaced 100 centres. Hardboard finished with Plascon E27-7 Grey Bottom

16 x 50 IPAR 13 X 44 pine Isofwood baffles

100 x 50 x 2.5 tipped channel welded to steel roof truss

prefabricated wooden signage

100 x 100 x 8 galvanized steel angled section, acting as support for signage

M10 countersunk square bolt

89 x 50 laminated saligna frame (prefabricated) joint with a haunch mortice and tenon joint.

6,36 mm laminated glass

110 x 365 laminated saligna hardwood beam

110 x 365 laminated saligna hardwood beam surrounds columns.

section d-d

detail 12: d-d

van der Walt street

Brown street

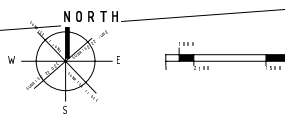
struben street

- 1
- 2
- 3
- 4
- 5
- 6
- 7
- 8
- 9
- 10
- 11
- 12
- 13
- 14
- 15
- 16
- 17
- 18
- 19
- 20
- 21
- 22
- 23
- 24
- 25
- 26
- 27
- 28

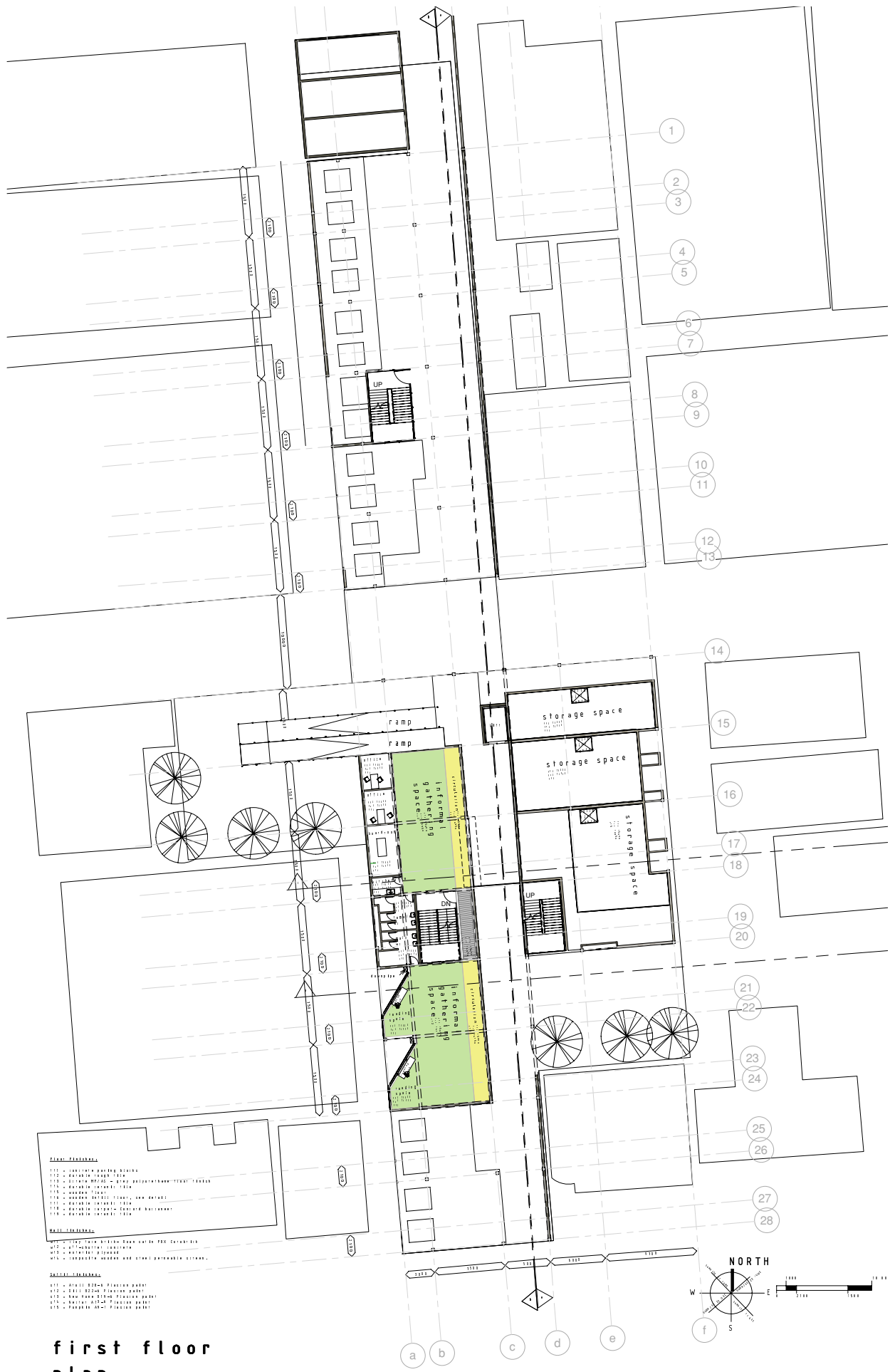


- Plant Footprints**
- 111 - concrete garden bed
 - 112 - concrete garden bed
 - 113 - concrete garden bed
 - 114 - concrete garden bed
 - 115 - concrete garden bed
 - 116 - concrete garden bed
 - 117 - concrete garden bed
 - 118 - concrete garden bed
 - 119 - concrete garden bed
 - 120 - concrete garden bed
- Wall Footprints**
- 211 - 100mm concrete block wall
 - 212 - 100mm concrete block wall
 - 213 - 100mm concrete block wall
 - 214 - 100mm concrete block wall
 - 215 - 100mm concrete block wall
 - 216 - 100mm concrete block wall
 - 217 - 100mm concrete block wall
 - 218 - 100mm concrete block wall
 - 219 - 100mm concrete block wall
 - 220 - 100mm concrete block wall
- Roof Footprints**
- 311 - 100mm concrete block wall
 - 312 - 100mm concrete block wall
 - 313 - 100mm concrete block wall
 - 314 - 100mm concrete block wall
 - 315 - 100mm concrete block wall
 - 316 - 100mm concrete block wall
 - 317 - 100mm concrete block wall
 - 318 - 100mm concrete block wall
 - 319 - 100mm concrete block wall
 - 320 - 100mm concrete block wall

ground floor plan



- a
- b
- c
- d
- e
- f



- Plan - Rooms:**
- 111 - Reception parking building
 - 112 - Reception - Reception area
 - 113 - Reception - Reception area
 - 114 - Reception - Reception area
 - 115 - Reception - Reception area
 - 116 - Reception - Reception area
 - 117 - Reception - Reception area
 - 118 - Reception - Reception area
 - 119 - Reception - Reception area
 - 120 - Reception - Reception area
- Plan - Stairs:**
- 121 - Reception - Reception area
 - 122 - Reception - Reception area
 - 123 - Reception - Reception area
 - 124 - Reception - Reception area
 - 125 - Reception - Reception area
 - 126 - Reception - Reception area
 - 127 - Reception - Reception area
 - 128 - Reception - Reception area
 - 129 - Reception - Reception area
 - 130 - Reception - Reception area
- Plan - Other:**
- 131 - Reception - Reception area
 - 132 - Reception - Reception area
 - 133 - Reception - Reception area
 - 134 - Reception - Reception area
 - 135 - Reception - Reception area
 - 136 - Reception - Reception area
 - 137 - Reception - Reception area
 - 138 - Reception - Reception area
 - 139 - Reception - Reception area
 - 140 - Reception - Reception area

first floor plan



Room Schedule

- 111 - Reception waiting room
- 112 - Reception desk
- 113 - Reception office
- 114 - Reception lounge
- 115 - Reception office
- 116 - Reception office
- 117 - Reception office
- 118 - Reception office
- 119 - Reception office
- 120 - Reception office

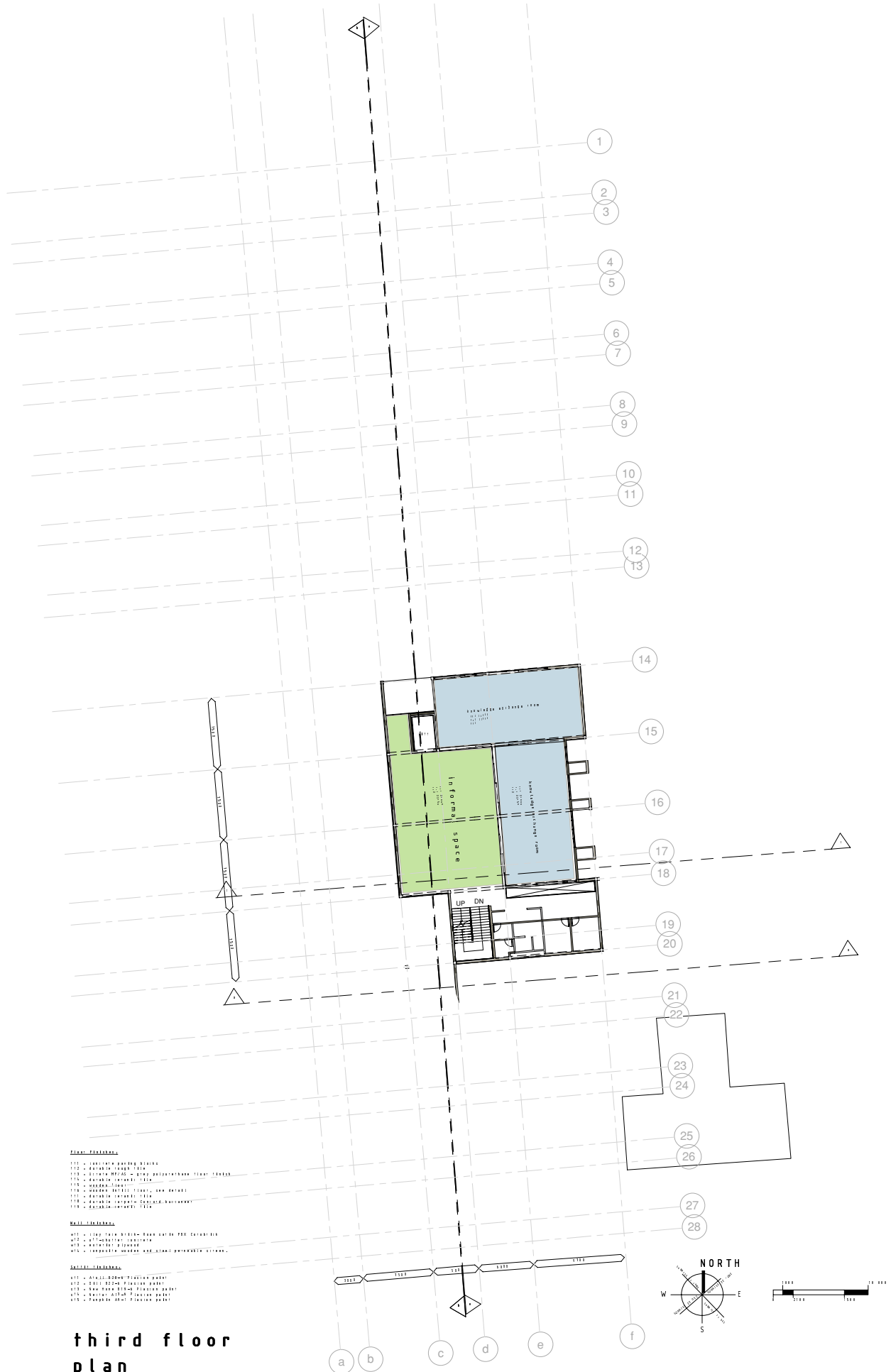
Room Schedule

- 121 - Reception office
- 122 - Reception office
- 123 - Reception office
- 124 - Reception office
- 125 - Reception office
- 126 - Reception office
- 127 - Reception office
- 128 - Reception office
- 129 - Reception office
- 130 - Reception office

Room Schedule

- 131 - Reception office
- 132 - Reception office
- 133 - Reception office
- 134 - Reception office
- 135 - Reception office
- 136 - Reception office
- 137 - Reception office
- 138 - Reception office
- 139 - Reception office
- 140 - Reception office

second floor plan



Legend

- 111 - Inform. space
- 112 - Inform. space
- 113 - Inform. space
- 114 - Inform. space
- 115 - Inform. space
- 116 - Inform. space
- 117 - Inform. space
- 118 - Inform. space
- 119 - Inform. space

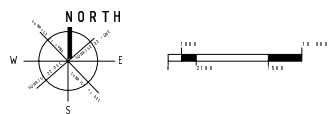
Room

- 121 - Inform. space
- 122 - Inform. space
- 123 - Inform. space
- 124 - Inform. space
- 125 - Inform. space
- 126 - Inform. space
- 127 - Inform. space
- 128 - Inform. space
- 129 - Inform. space

Other

- 131 - Inform. space
- 132 - Inform. space
- 133 - Inform. space
- 134 - Inform. space
- 135 - Inform. space
- 136 - Inform. space
- 137 - Inform. space
- 138 - Inform. space
- 139 - Inform. space

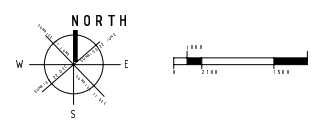
third floor plan

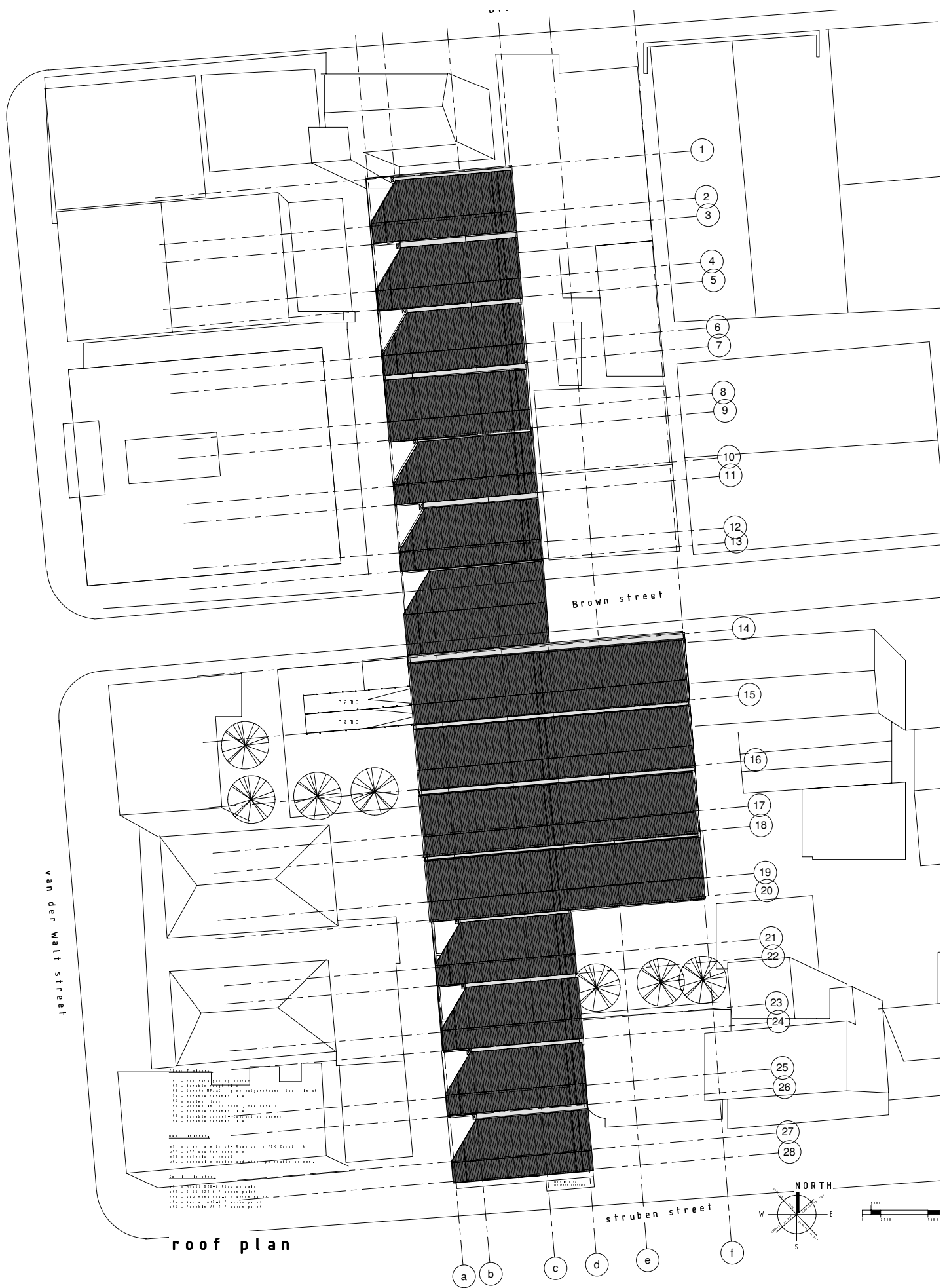




- Plan-Information:**
- 111 = concrete parking blocks
 - 112 = concrete ramp gate
 - 113 = concrete MFCAS - long passenger car lanes
 - 114 = concrete ramp gate
 - 115 = wooden floor
 - 116 = wooden floor (floor, oak detail)
 - 117 = concrete ramp gate
 - 118 = concrete ramp - concrete ballroom
 - 119 = concrete ramp gate
- Wall-Information:**
- w11 = long thin brick wall with PCC exterior
 - w12 = brick wall exterior
 - w13 = exterior glazing
 - w14 = long thin wooden and steel perimeter screen
- Door-Information:**
- d11 = Arco 02000 flexion gate
 - d12 = Arco 02000 flexion gate
 - d13 = Arco 02000 flexion gate
 - d14 = Arco 02000 flexion gate
 - d15 = Arco 02000 flexion gate

fourth floor plan





van der Walt street

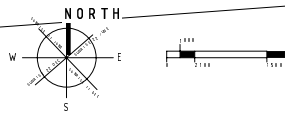
Brown street

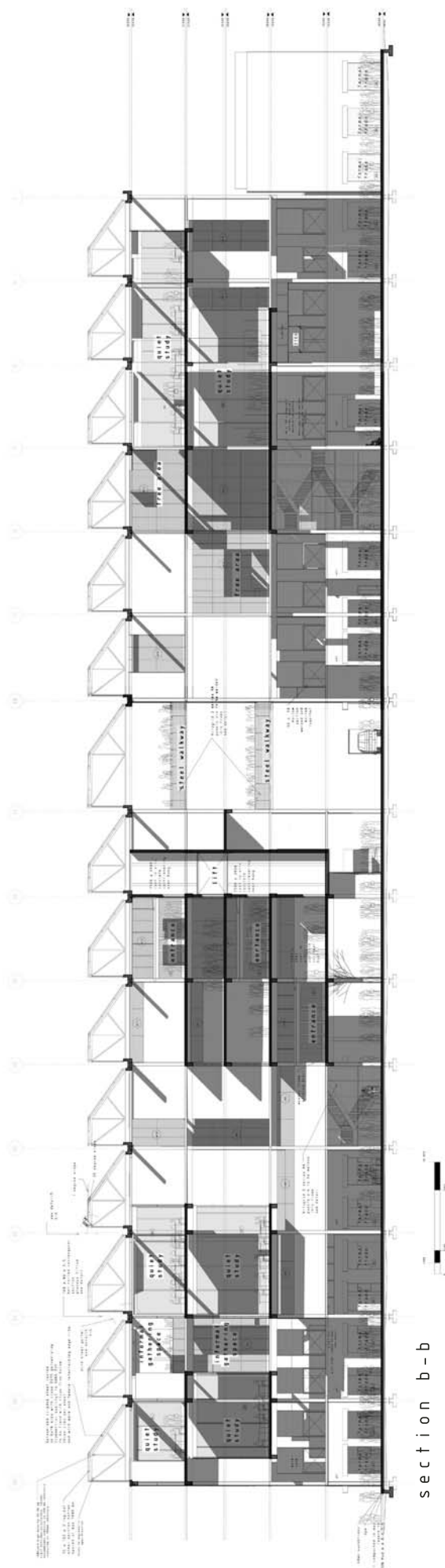
struben street

roof plan

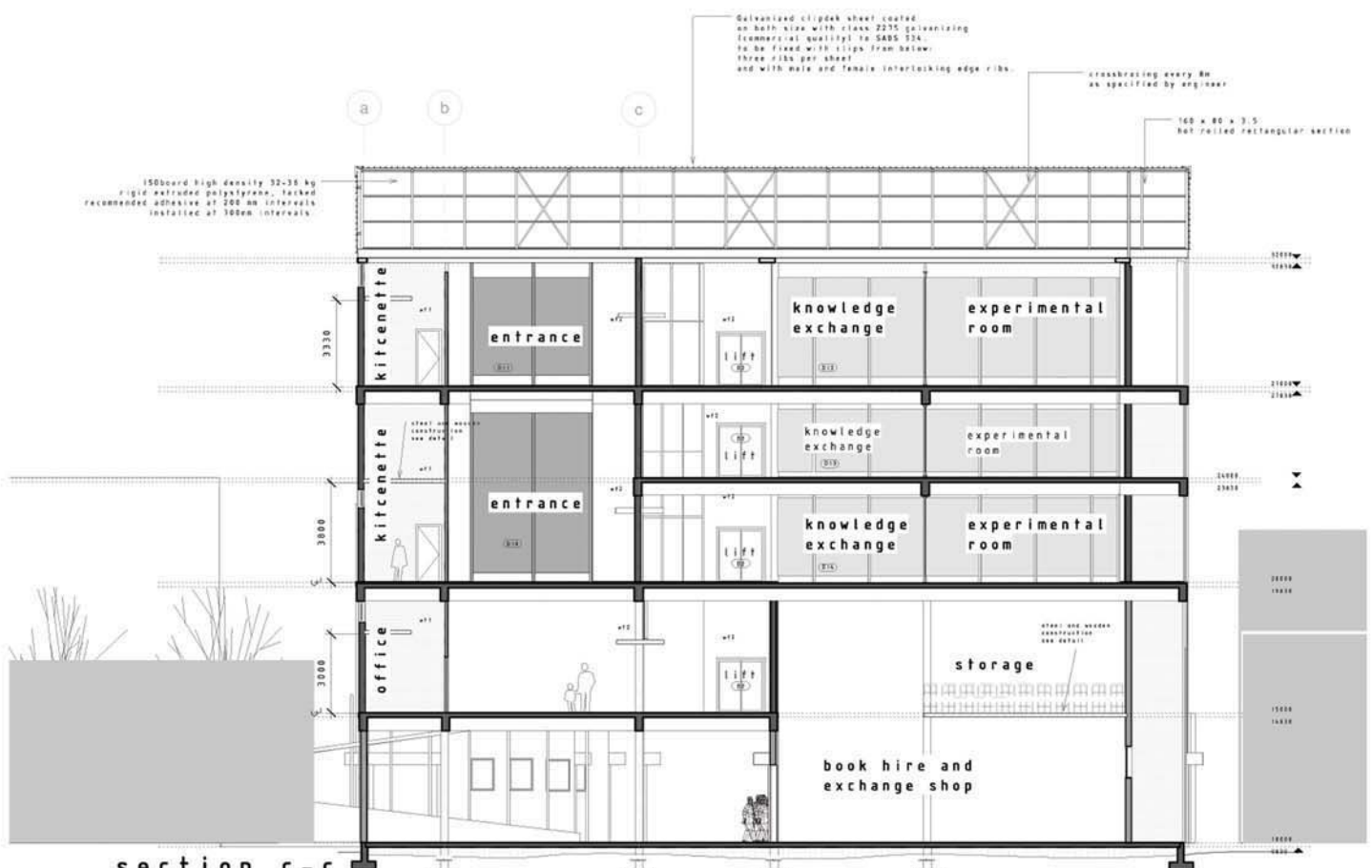
- Legend**
- 111 - Section 111-111-111
 - 112 - Section 112-112-112
 - 113 - Section 113-113-113
 - 114 - Section 114-114-114
 - 115 - Section 115-115-115
 - 116 - Section 116-116-116
 - 117 - Section 117-117-117
 - 118 - Section 118-118-118
 - 119 - Section 119-119-119
 - 120 - Section 120-120-120
- Notes**
- 121 - Note 121-121-121
 - 122 - Note 122-122-122
 - 123 - Note 123-123-123
 - 124 - Note 124-124-124
 - 125 - Note 125-125-125
- Dimensions**
- 126 - Dimension 126-126-126
 - 127 - Dimension 127-127-127
 - 128 - Dimension 128-128-128
 - 129 - Dimension 129-129-129
 - 130 - Dimension 130-130-130

a b c d e f

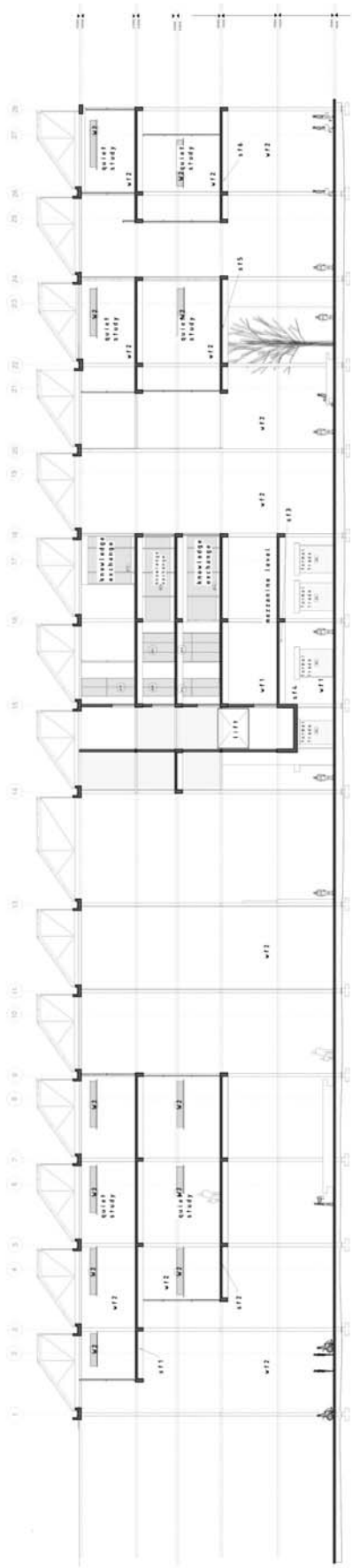




section b - b



section c-c
scale 1:100



section e-e