

Supplementary Information

A copper(II) chloride coordination compound with an adamantane-like core

BENJAMIN A. MUKDA, CHRISTOPHER P. LANDEE, MELANIE RADEMEYER, MARK M. TURNBULL*
and BRIAN M. WELLS

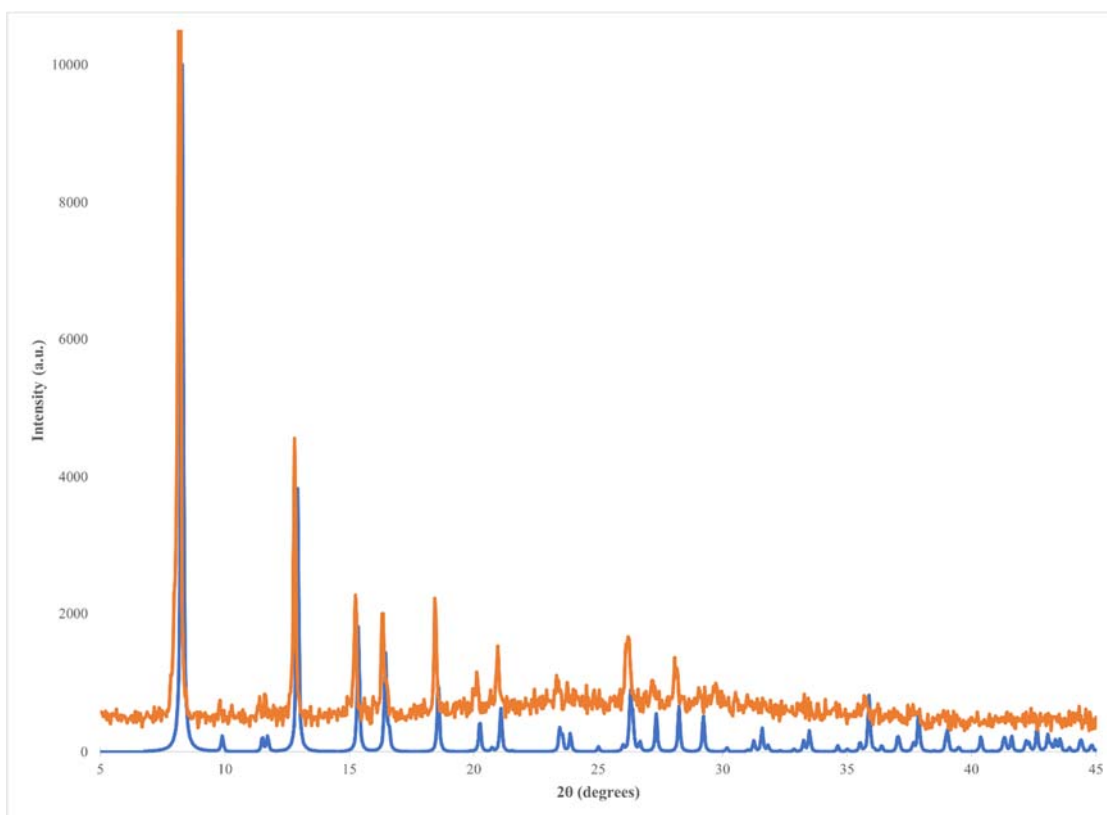


Figure S1. Comparison of the calculated powder X-ray diffraction pattern for the isoquinoline adamantoid (blue) and the measured pattern of the adamantoid (orange).

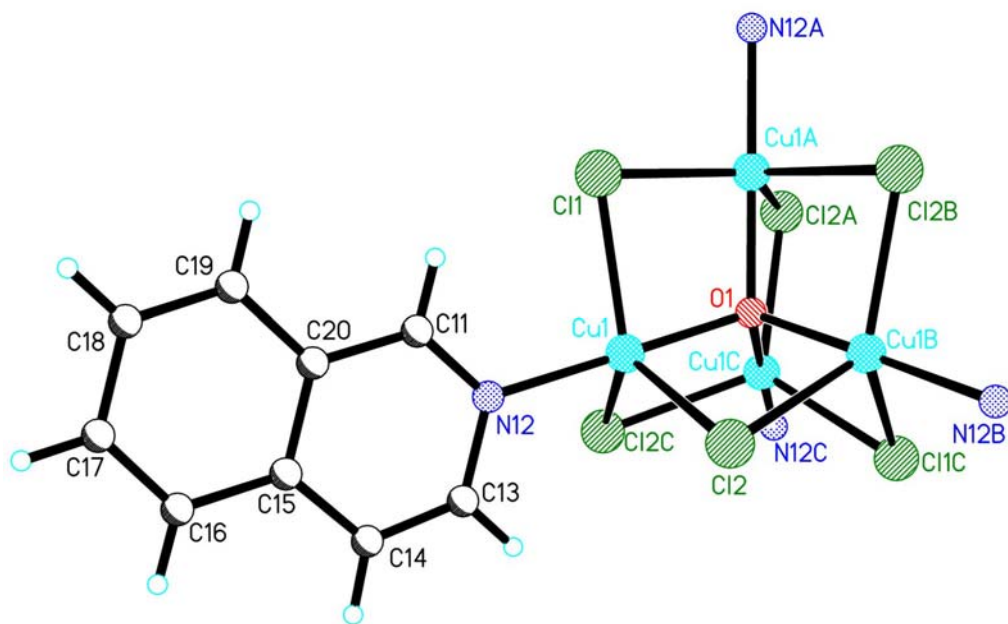


Figure S2. A labeled figure of the adamantoid structure showing only one iQuin ligand. Symm. Op.
 $A = 0.5-x, 1.5-y, z$; $B = y-0.5, 1-x, 2-z$; $C = 1-y, 0.5+x, 2-z$.

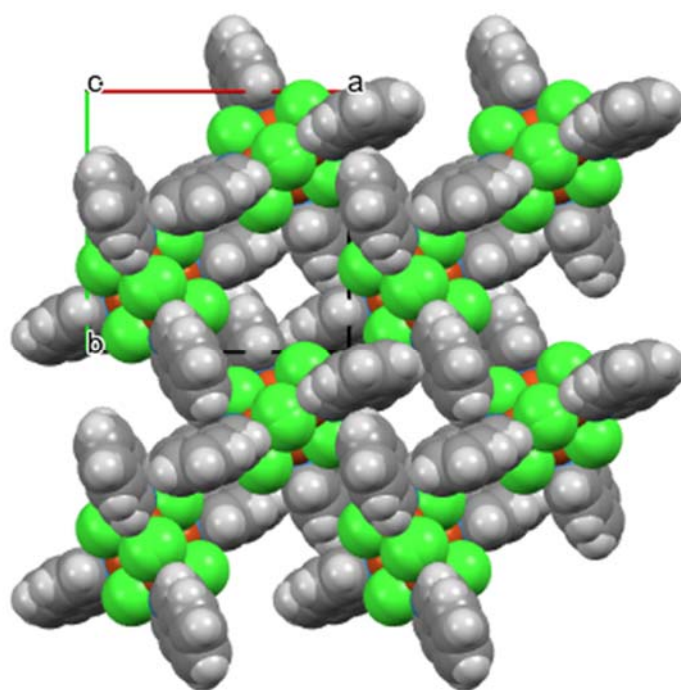


Figure S3. A space filling model of **1** showing the intermolecular voids parallel to the *c*-axis.

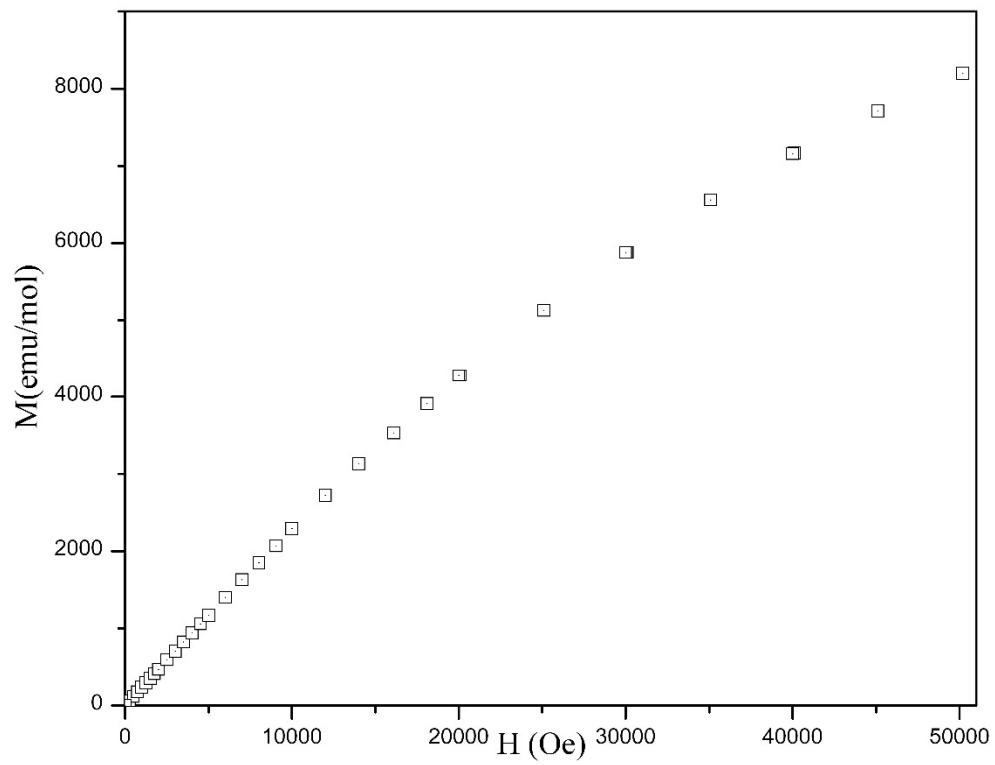


Figure S4. $M(H)$ data for **1**.

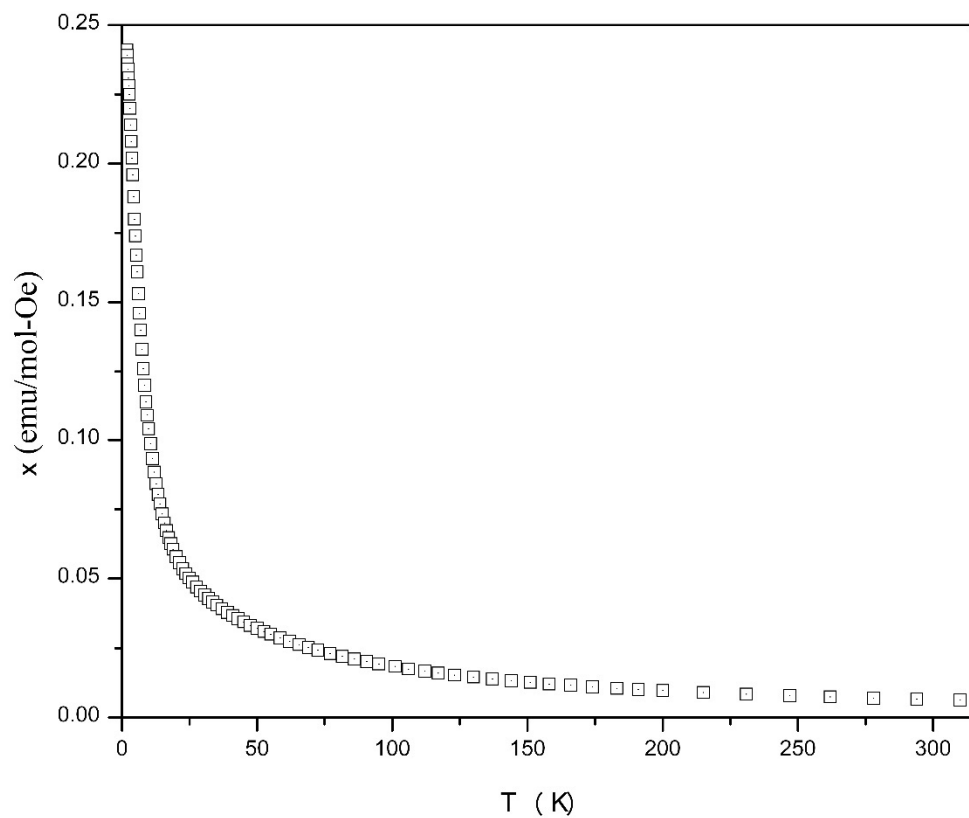


Figure S5. $\chi(T)$ data for **1**.