

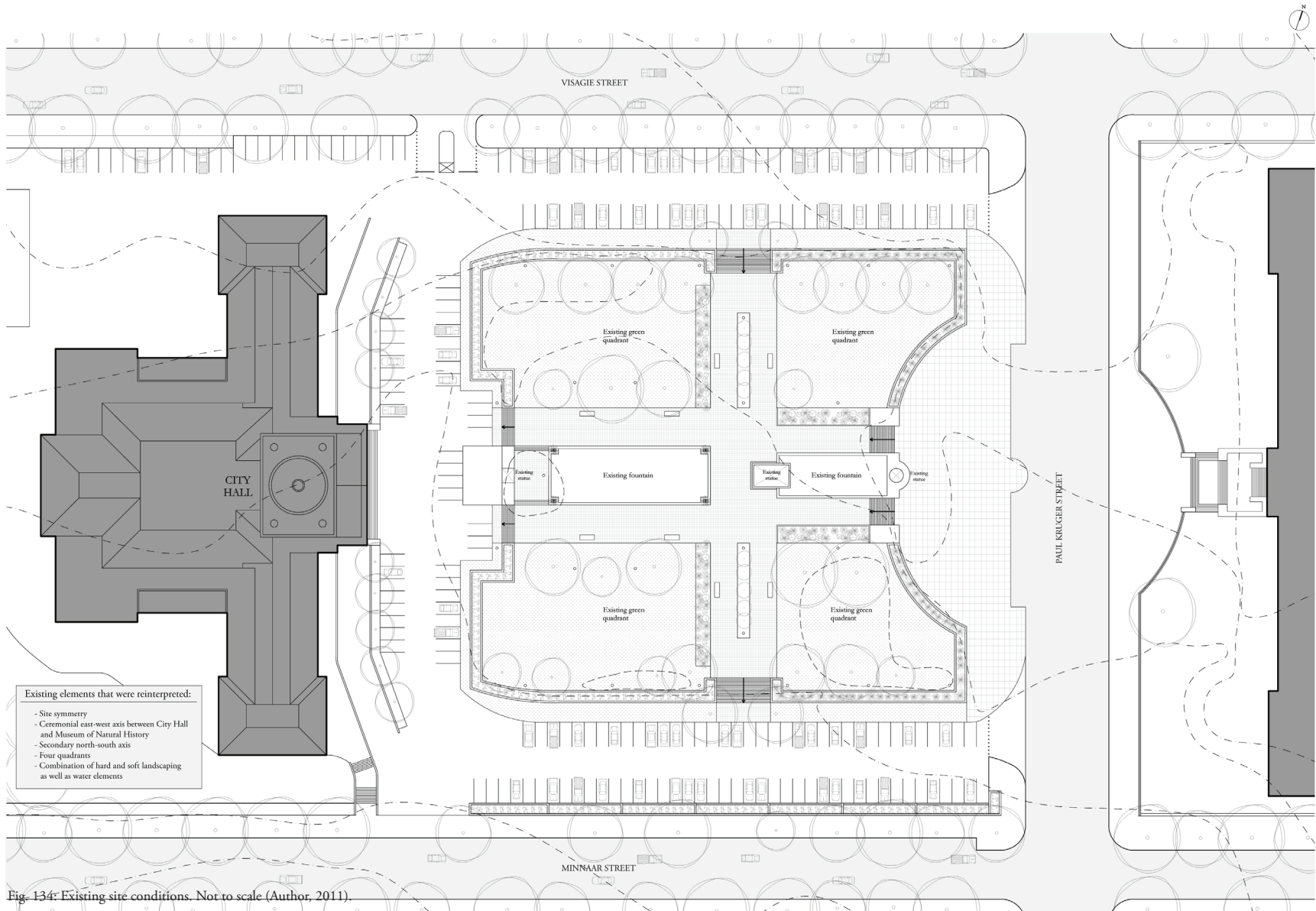
Drawings

8

# 8

## DRAWINGS

This chapter contains the drawings that were presented in the November Final Exam. The same set of drawings were presented for both the design and technical examination panels.





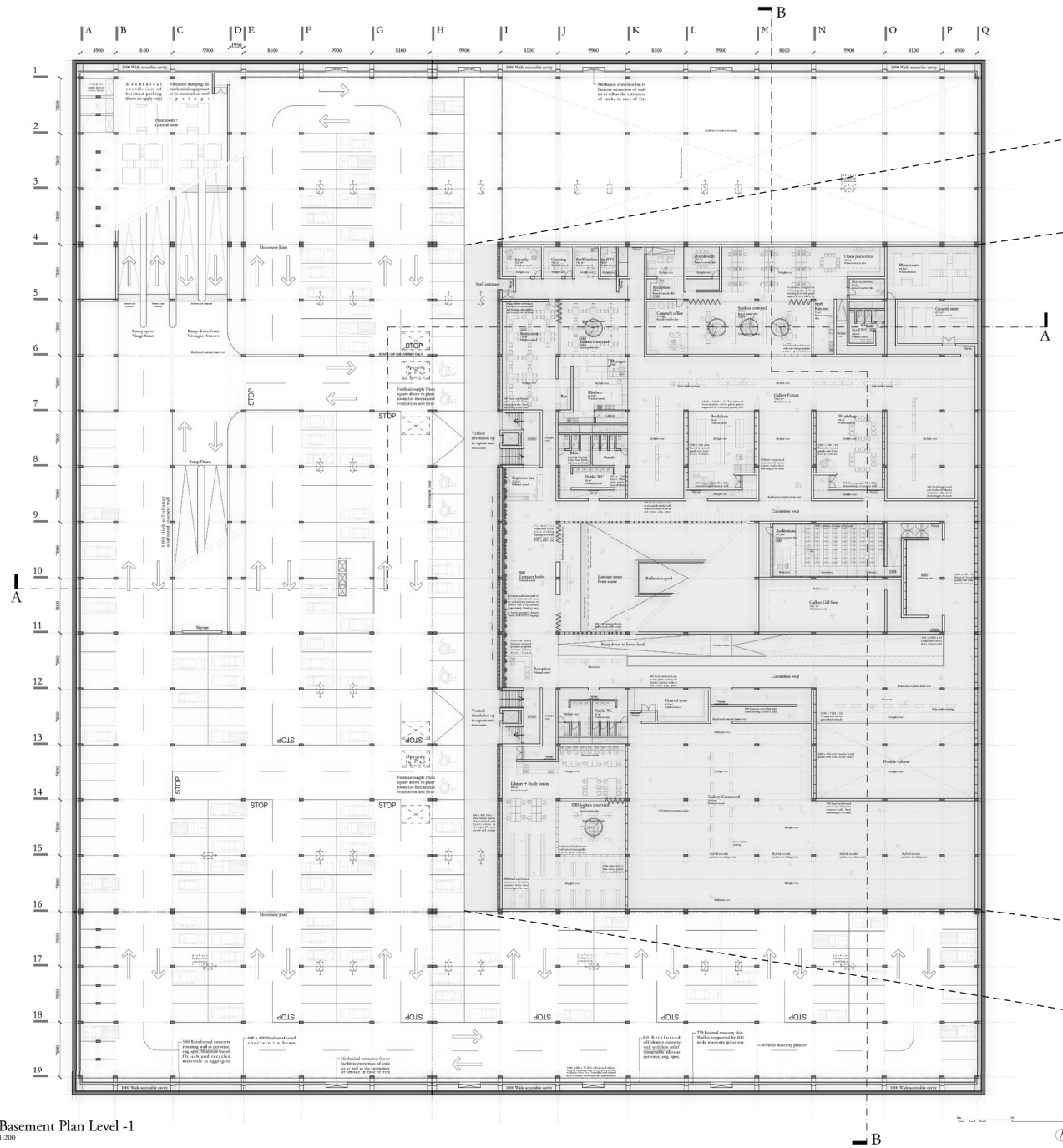


Fig. 136: First subterranean floor of proposed new precinct . Not to scale (Author, 2011).

Basement Plan Level -1  
1:200

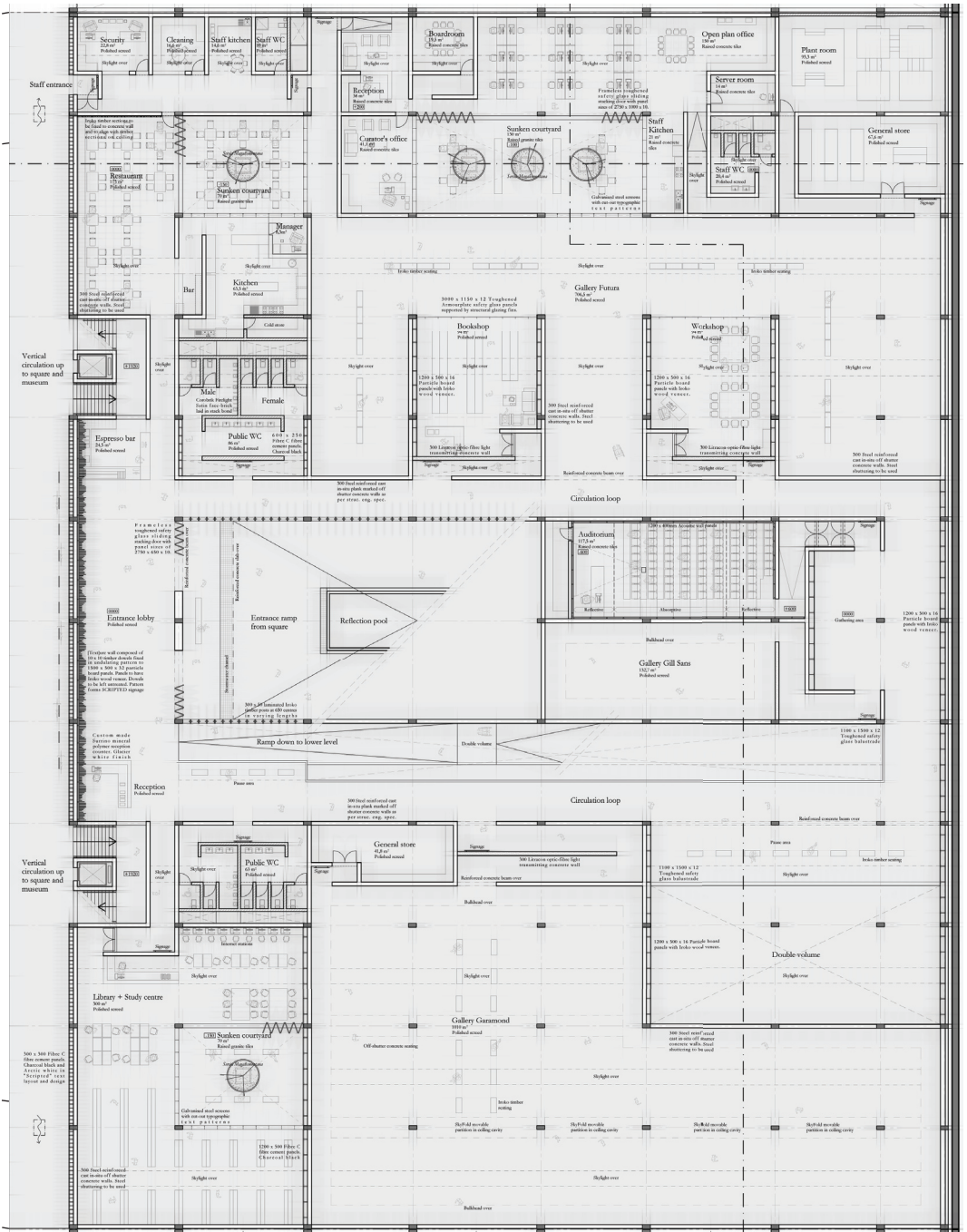


Fig. 137: Callout of museum plan - first subterranean floor. Not to scale (Author, 2011).

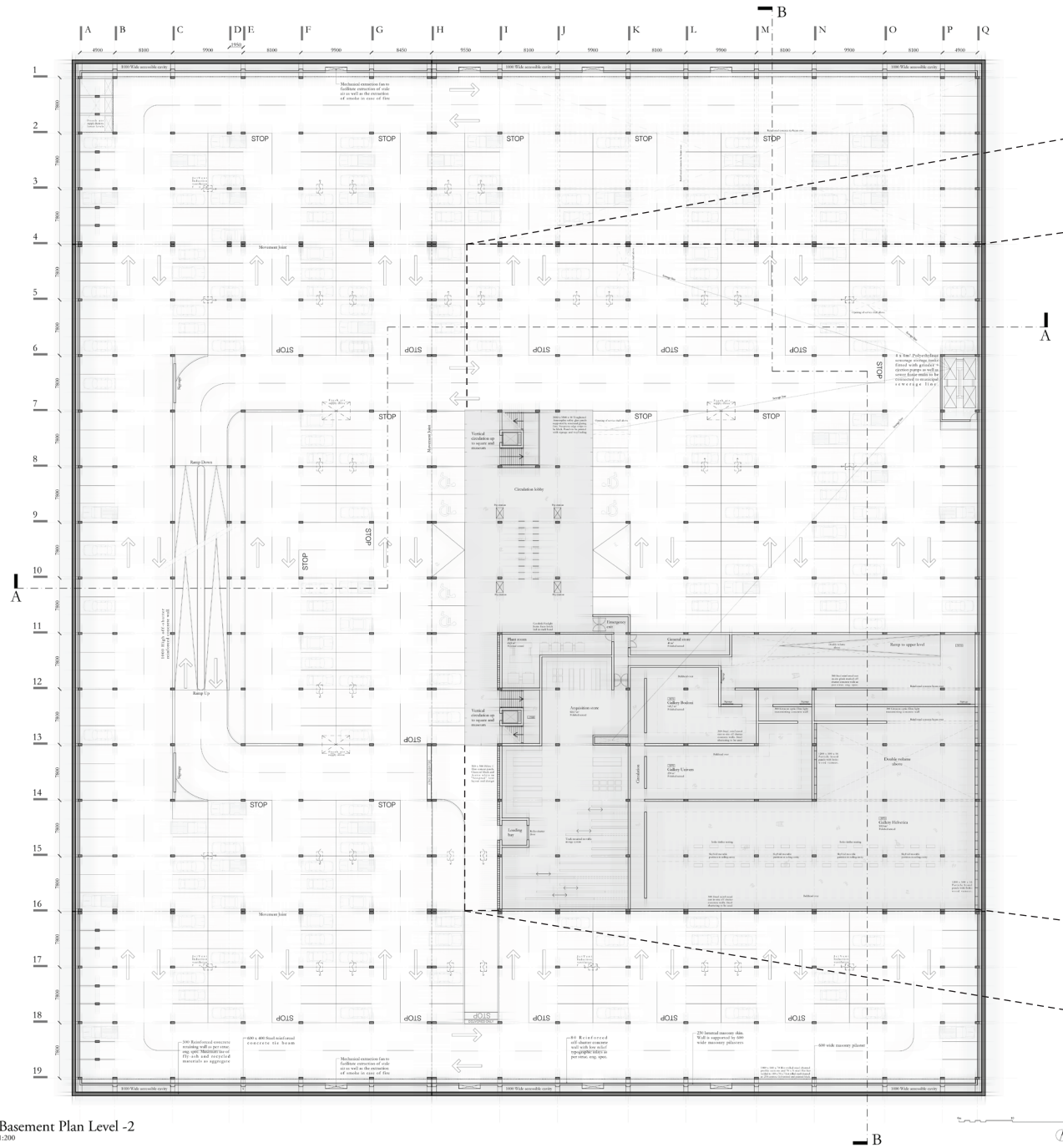


Fig. 138: Second subterranean floor of proposed new precinct . Not to scale (Author, 2011).

Basement Plan Level -2  
1:200



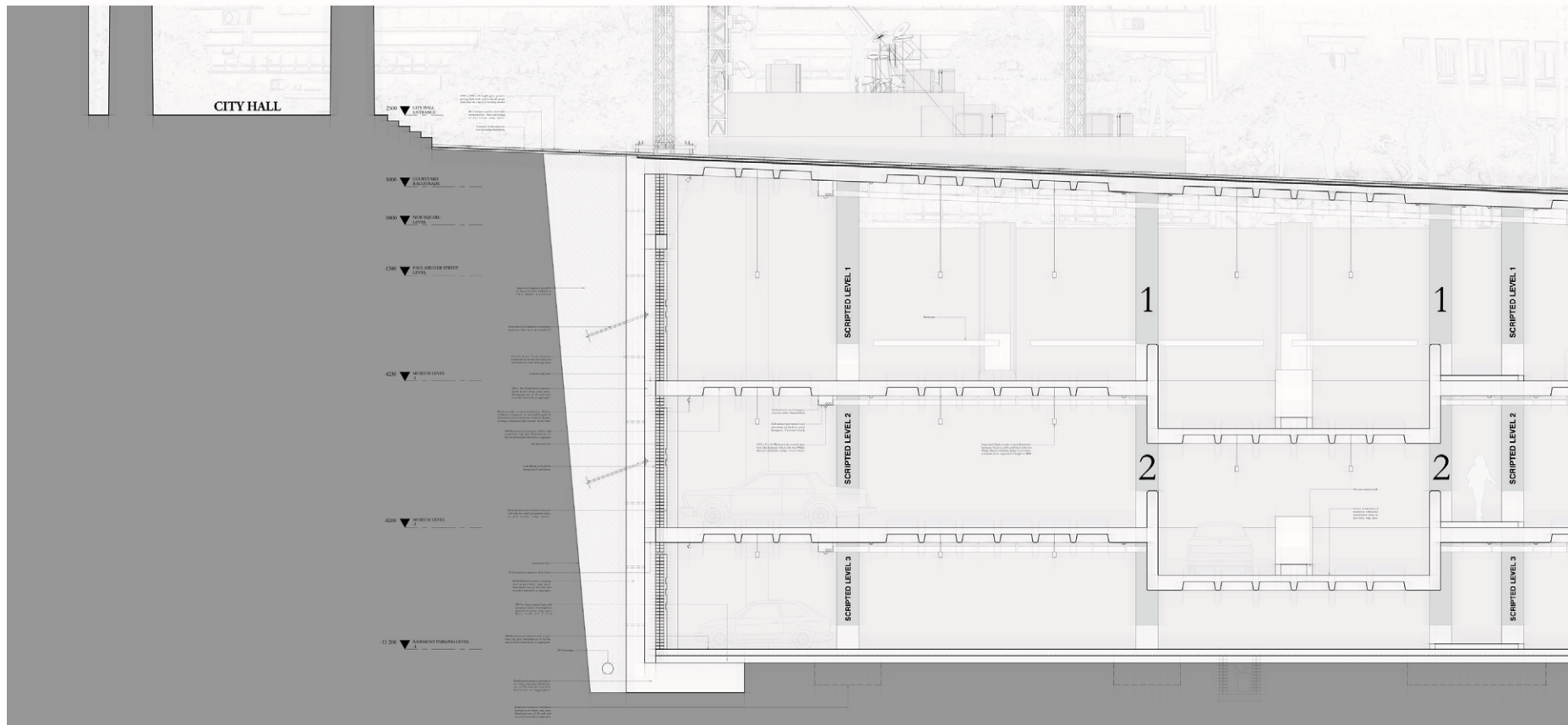
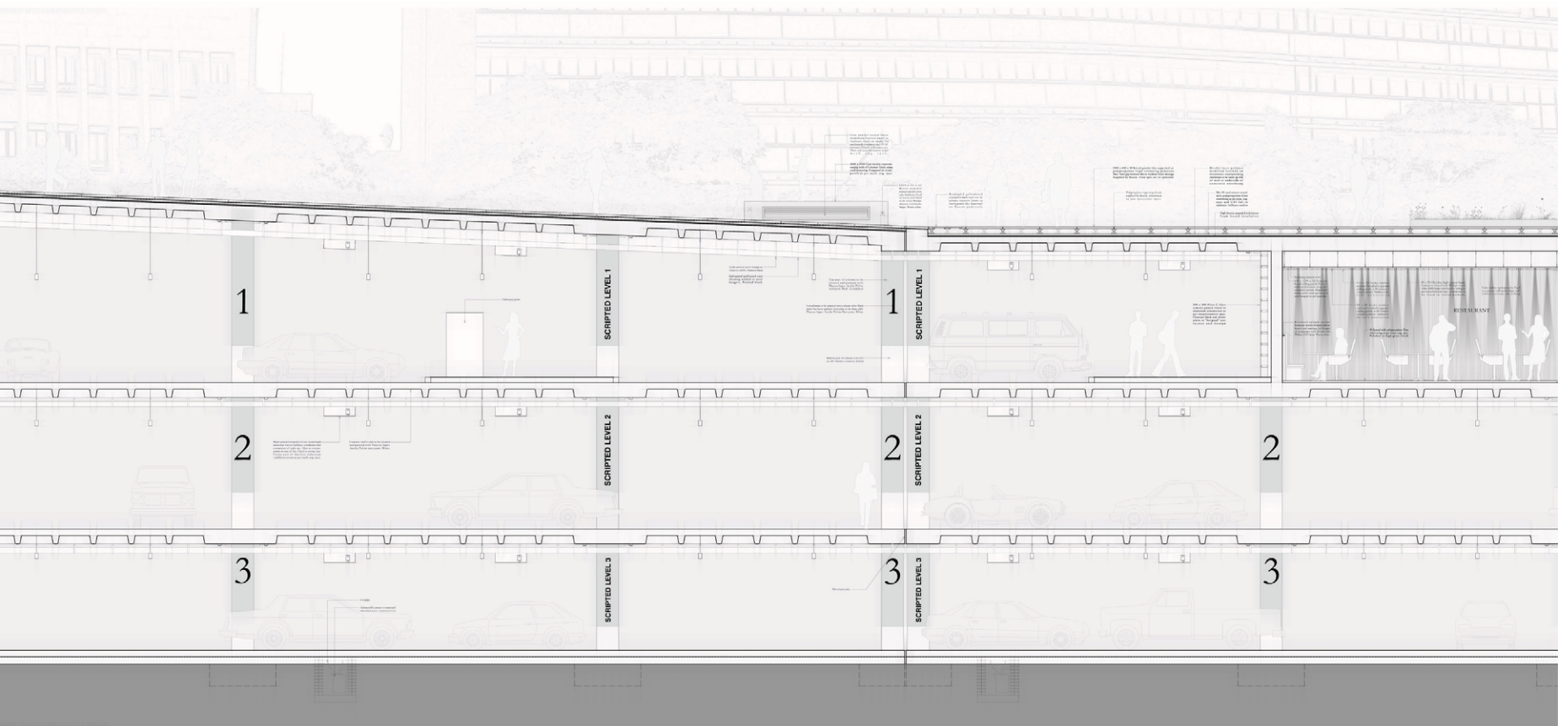


Fig. 140: Section AA - Part 1. Not to scale (Author, 2011).



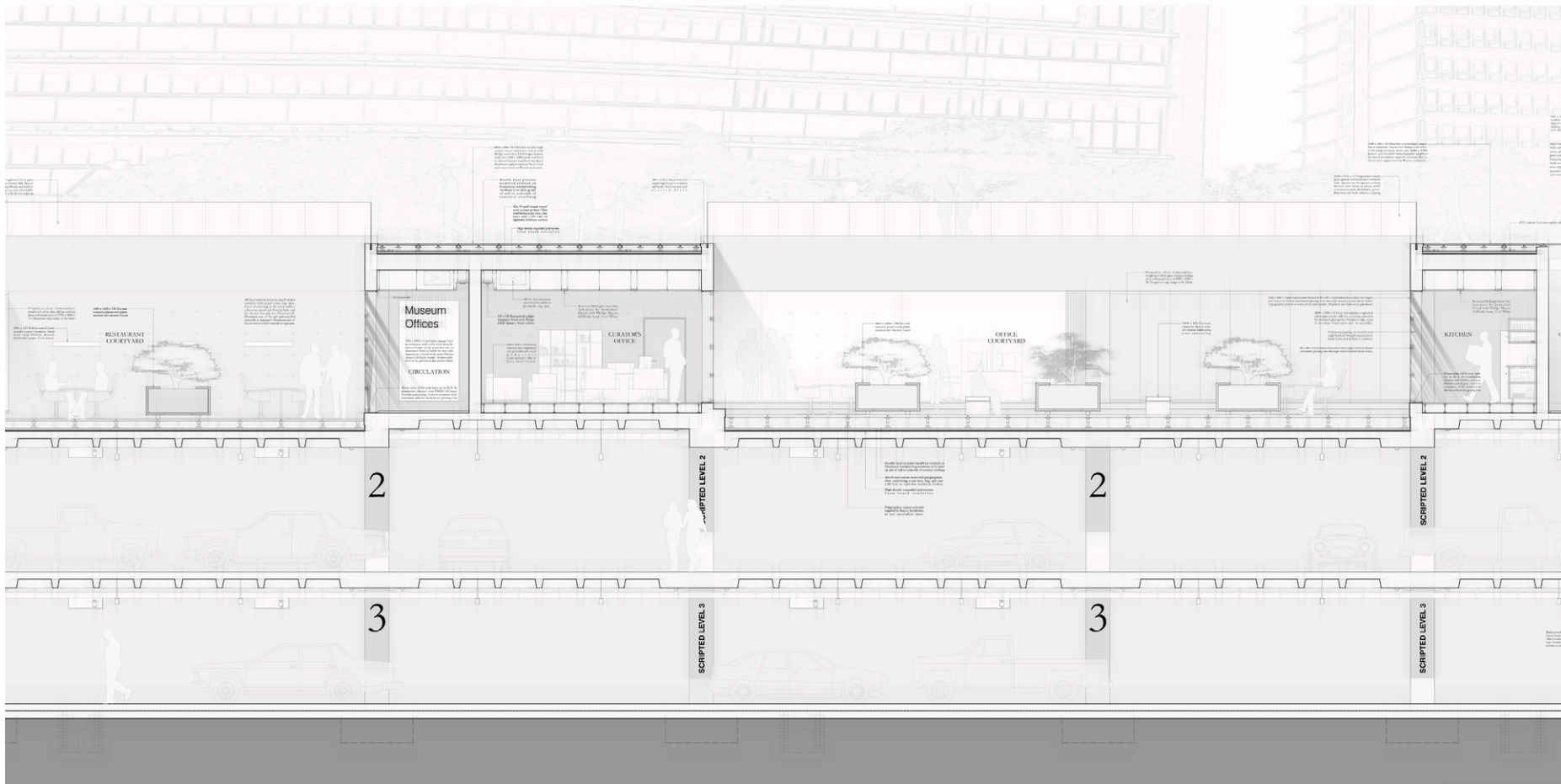
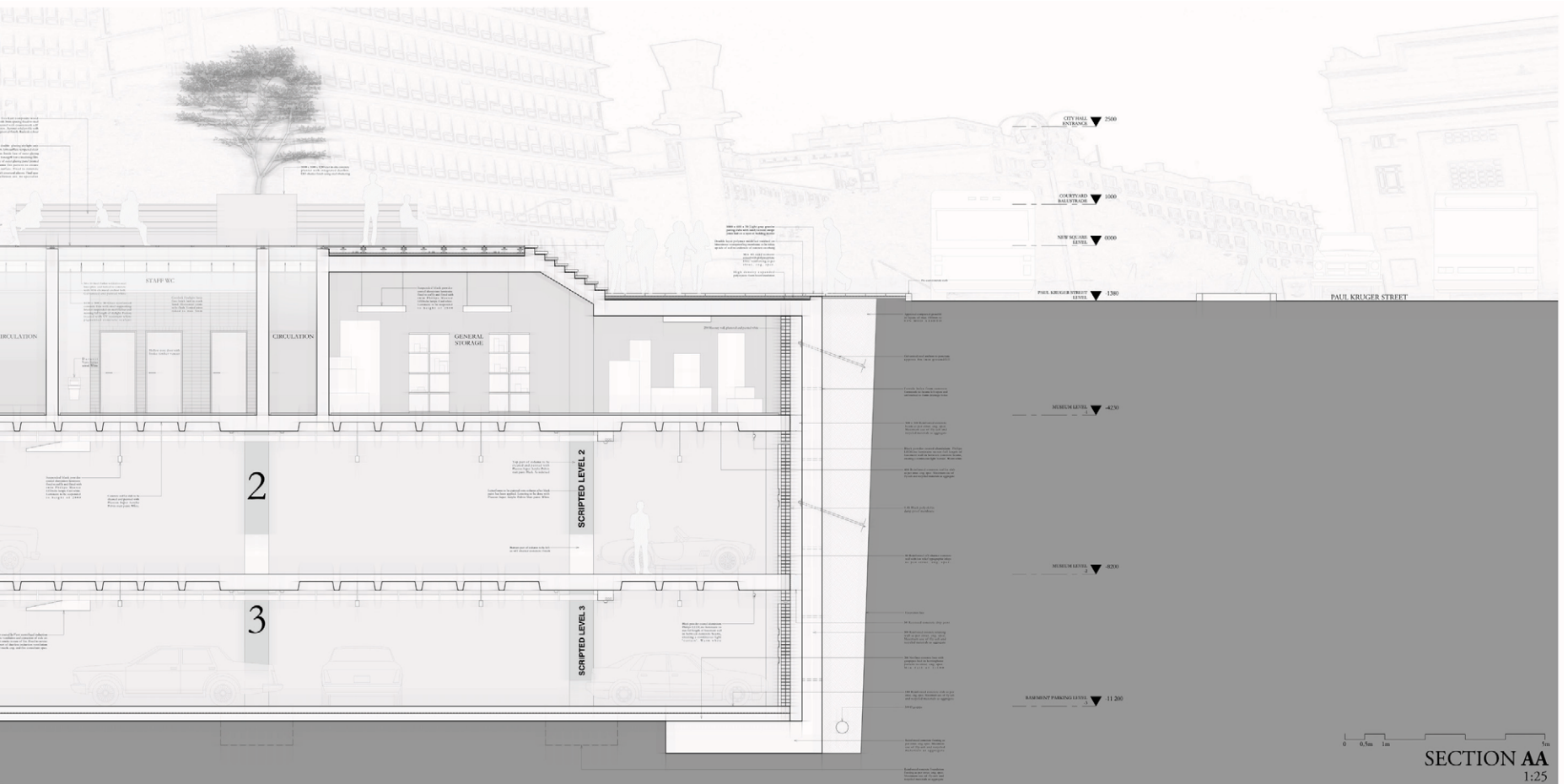


Fig. 141: Section AA - Part 2. Not to scale (Author, 2011).



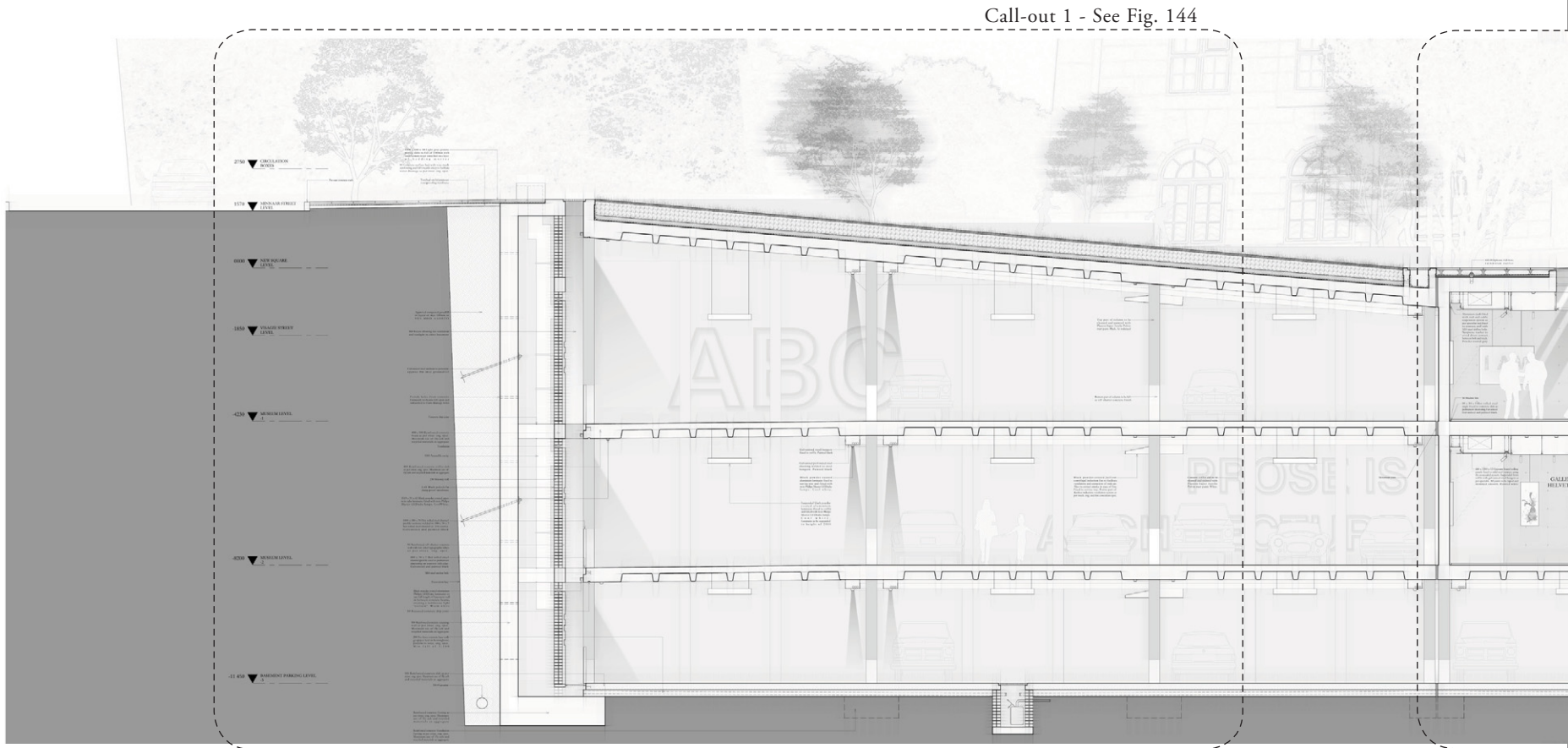
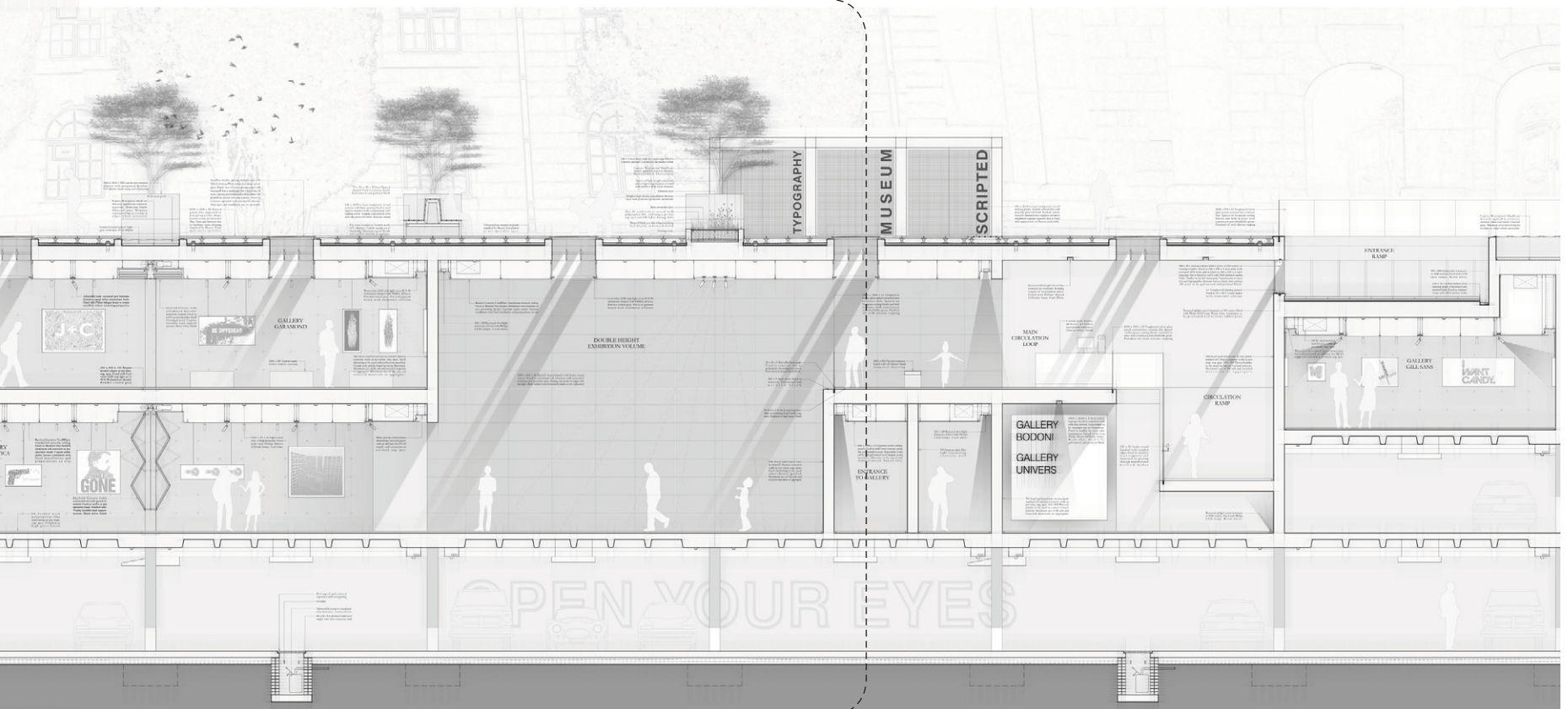


Fig. 142: Section BB - Part 1. Not to scale (Author, 2011).

Call-out 2 - See Fig. 145



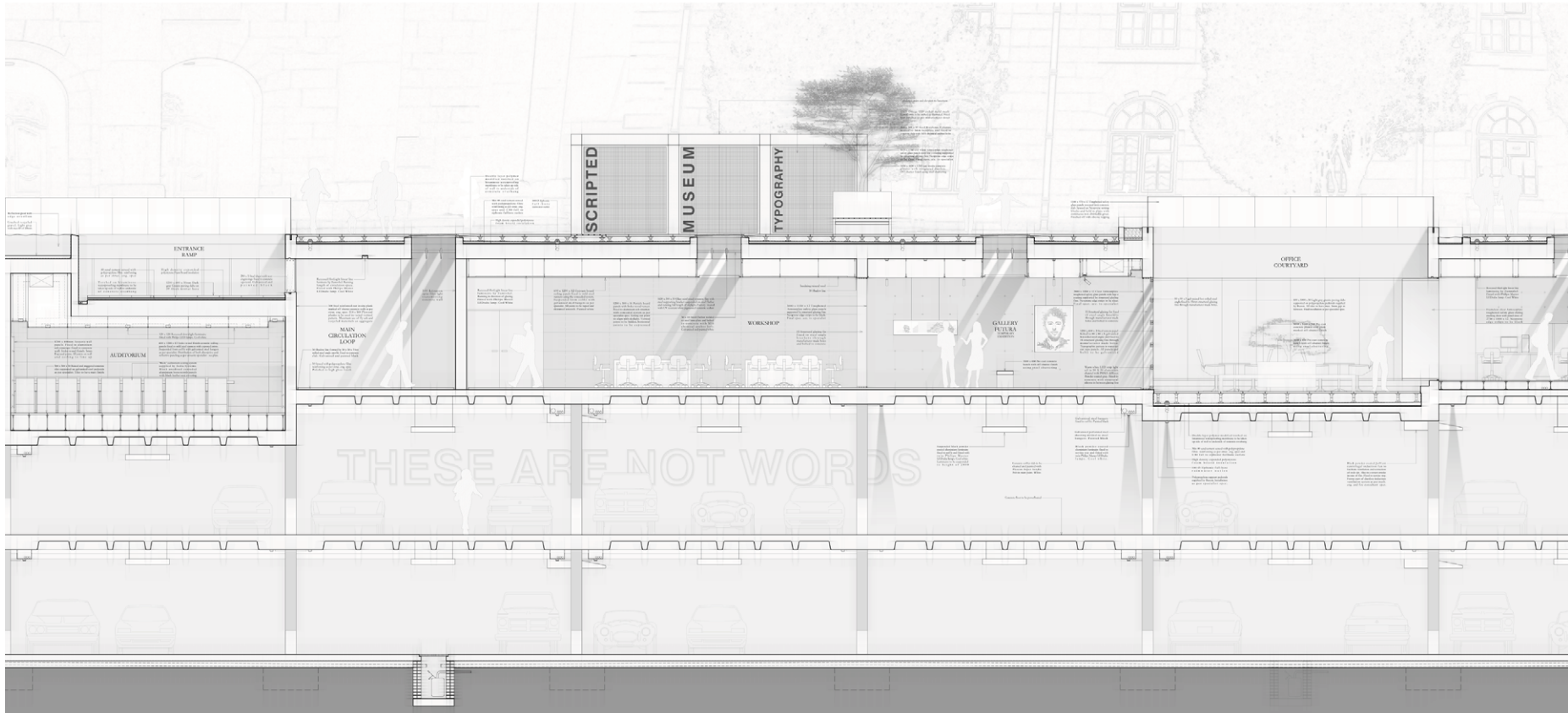
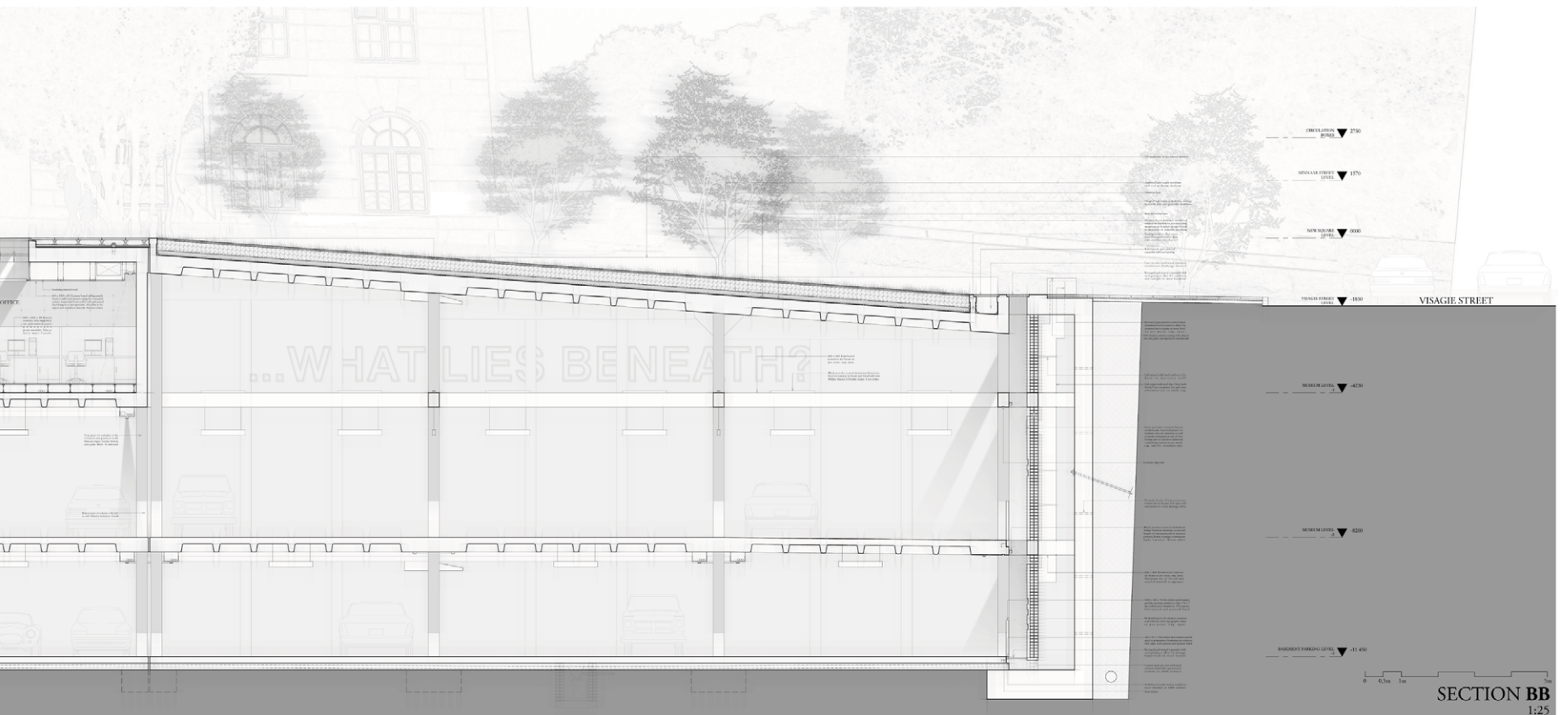


Fig. 143: Section BB - Part 2. Not to scale (Author, 2011).



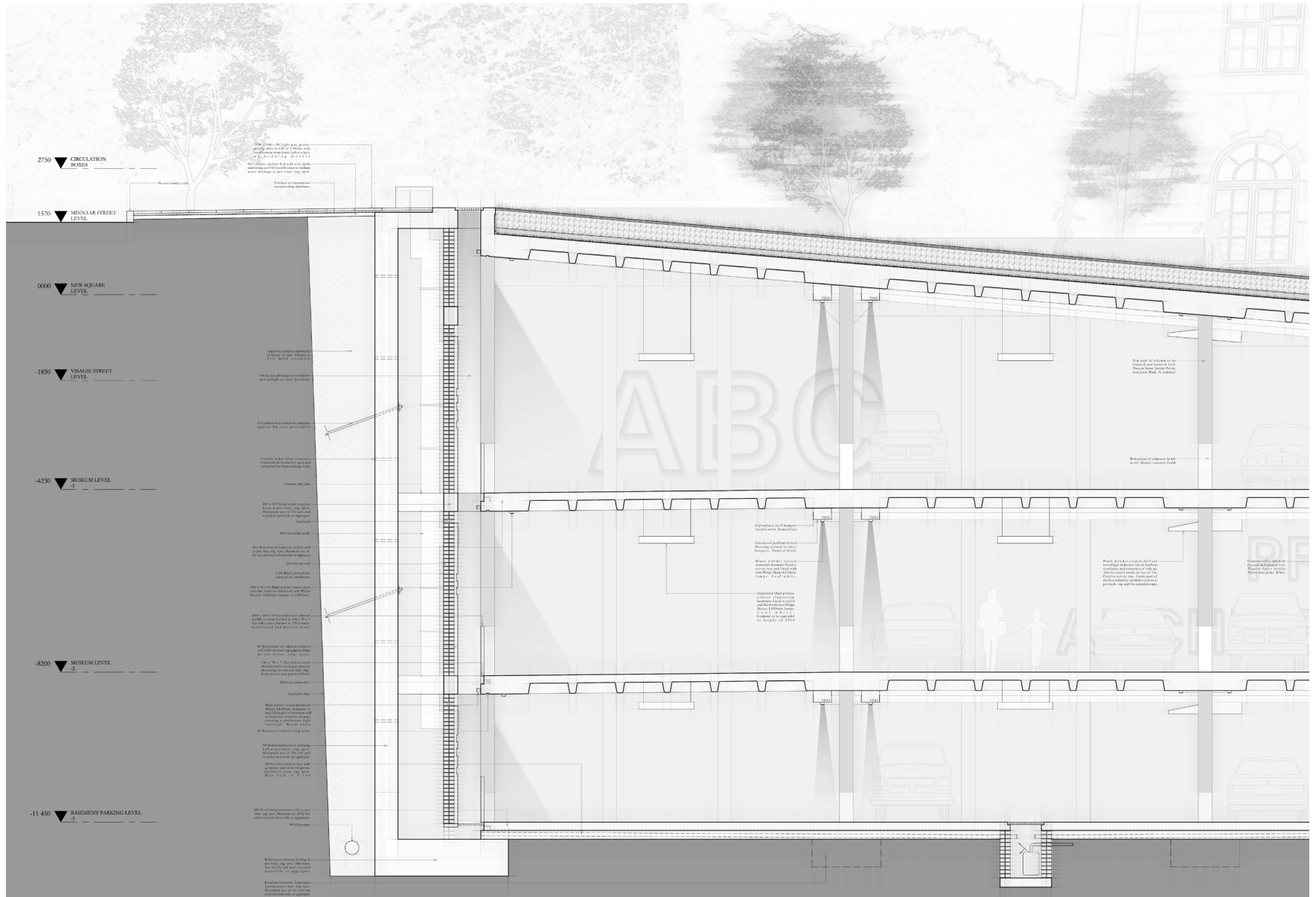


Fig. 144: Section BB - Call-out 1. Not to scale (Author, 2011).

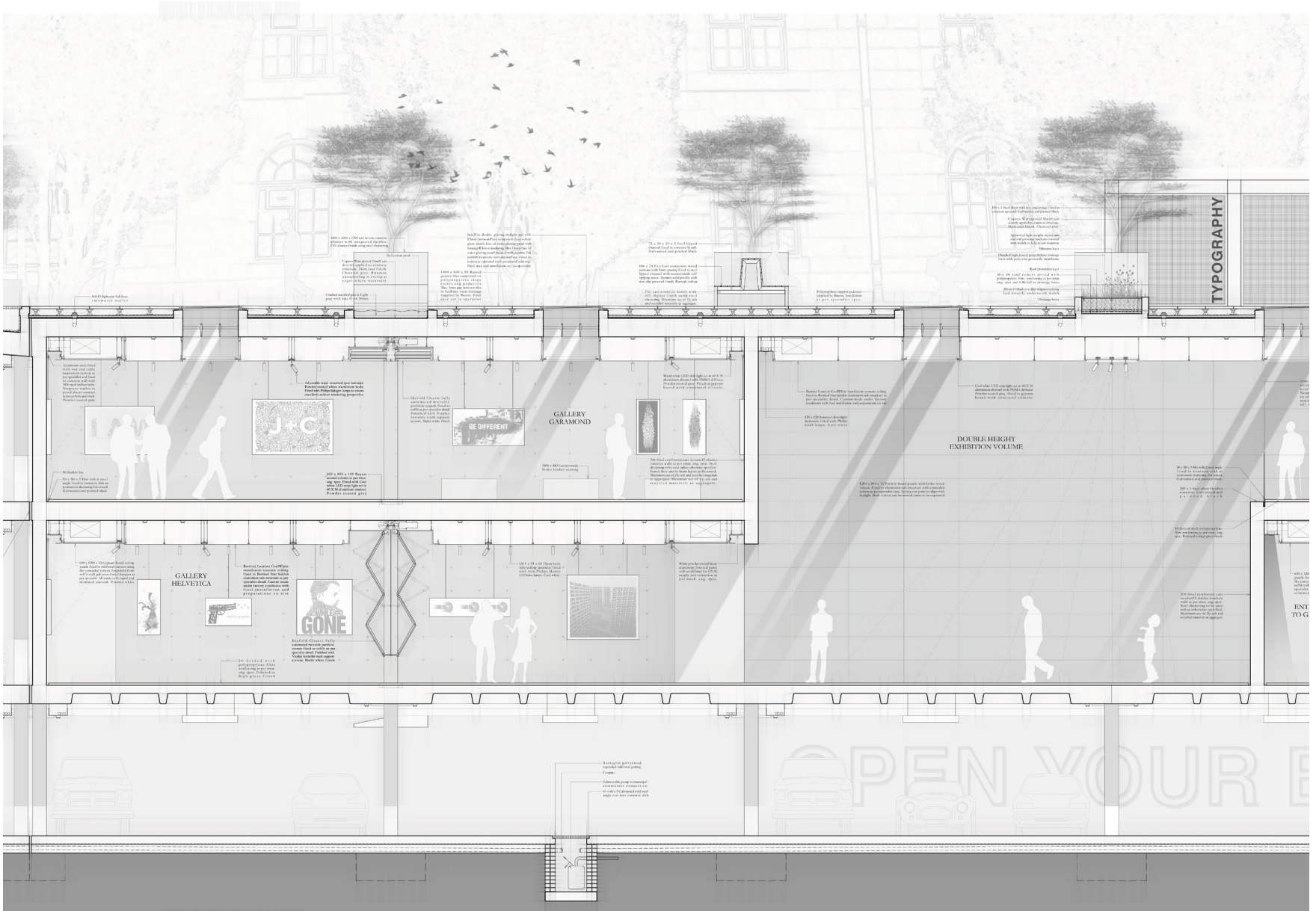


Fig. 145: Section BB - Call-out 2. Not to scale (Author, 2011).



Fig. 146: View of museum entrance ramp - daytime (Author, 2011).

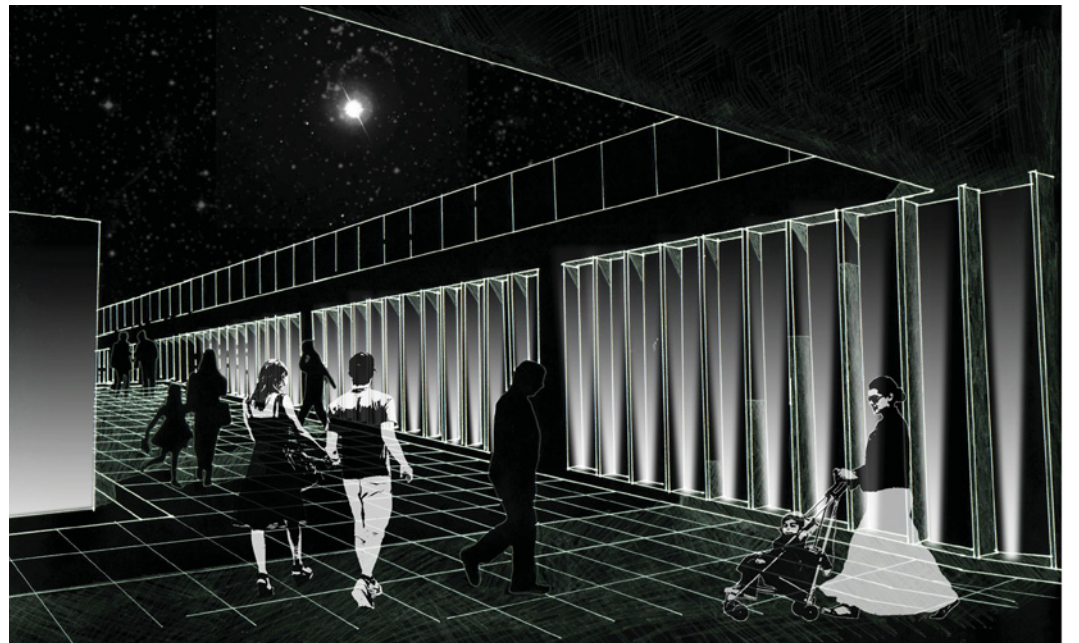


Fig. 147: View of museum entrance ramp - nighttime (Author, 2011).



Fig. 148: View of sunken museum courtyards with perforated letter screens (Author, 2011).

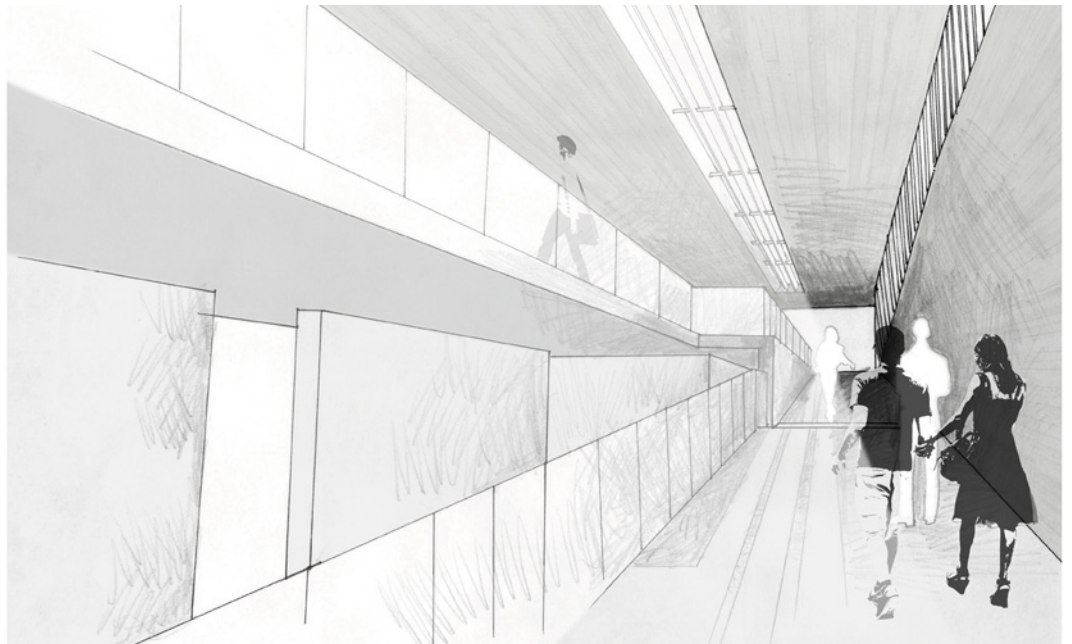


Fig. 149: View of interior circulation ramp (Author, 2011).