

Fig. 1.—Nagana Research Laboratory, Ntambanana Settlement, from the south.



Fig. 2.—High veld (1,500 ft.), near the Eshowe–Melmoth and Eshowe–Empangeni cross-roads; the commencement of the middle veld is seen on the right.

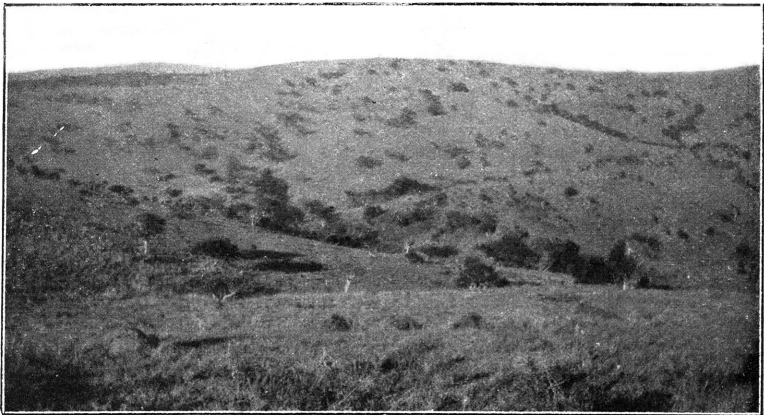


Fig. 3.—Middle veld, showing typical vegetation at Nagana Research Laboratory (Farm No. 273). Looking south from Laboratory.

*Nagana in Zululand.*]

[Curson.



Fig. 4.—Middle veld, south of Umhlatuzi River along Eshowe—Empangeni road. In distance is Ngoye Range, the southern limit of *Glossina* in Africa.

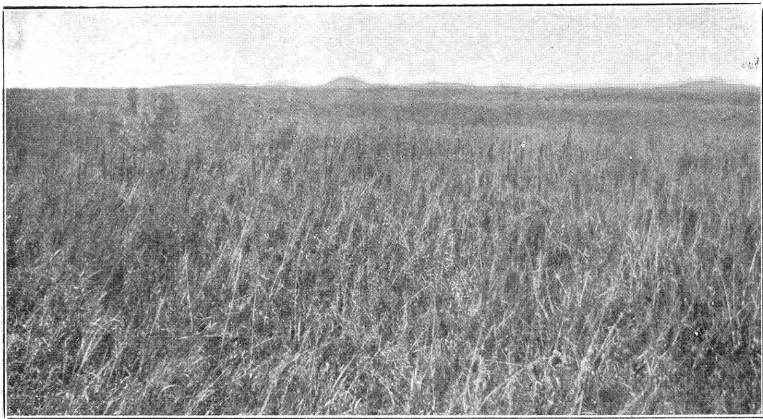


Fig. 5.—Low veld, coastal grass-veld. Note open nature of country between Palmveld and Dune Bush. In distance are sand-dunes, the most prominent eminence being Mlalalo, Ubombo Division.

*Nagana in Zululand.*]

[Curson.

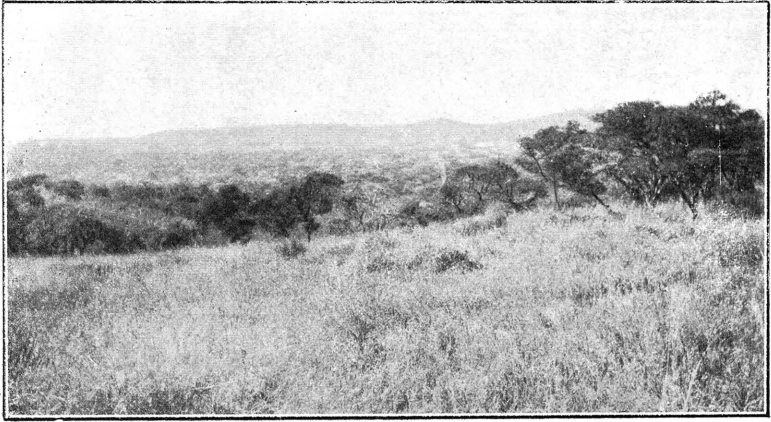


Fig. 6.—Low ve'd, looking south-west from Otobotini Drift across the Pongolo River. Note dense bush and Lebomo Range (2,000 ft.), which prevents westward spread of *Glossina*.

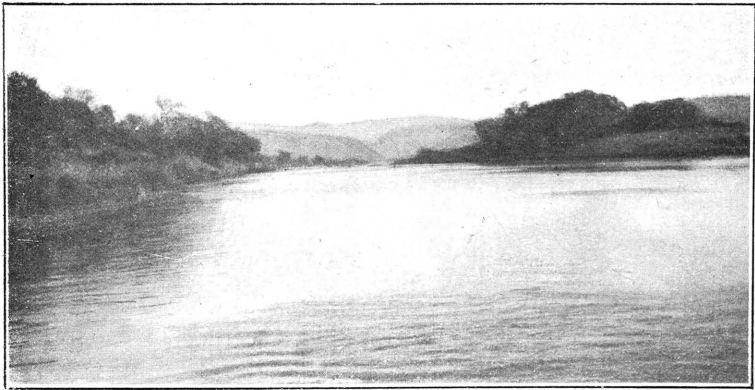


Fig. 7.—Pongolo River, looking upstream from Otobotini Drift. In the distance is Pongolo Poort in the Lebombo Range.

*Nagana in Zululand.*]

[*Curson.*

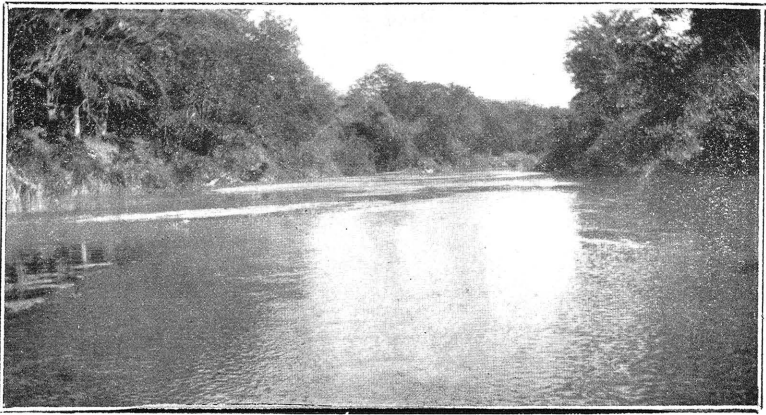


Fig. 8.—Mkuzi River, looking upstream. The right bank is part of the Mkuzi Game Reserve.

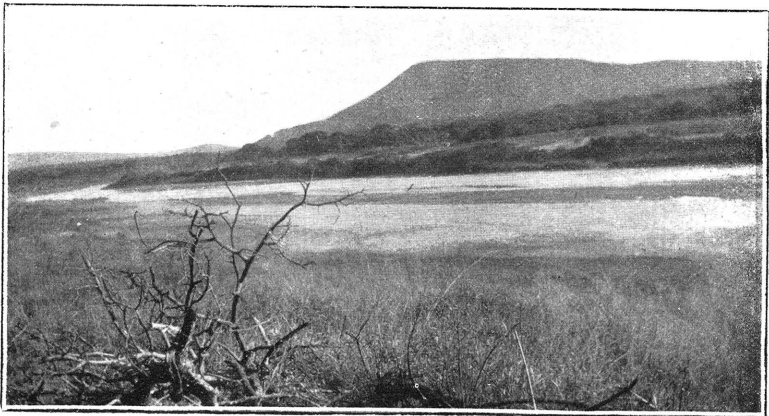


Fig. 9.—White Umfolosi River, looking upstream from Munywane confluence. Note Ngoloti Hill and the dense bush extending inland along the valley.

*Nagana in Zululand.*

[*Curson.*