

Supplementary Information

Systematics of African rough-scaled lizards (*Ichnotropis* Peters, 1854), with description of a two new species from eastern Angola

Werner Conradie, Chad Keates, Eli Greenbaum, Javier Lobón-Rovira, Krystal A. Tolley,
Max B. Smeele, Pedro vaz Pinto, Reuben V. van Breda, Luke Verburgt

Contents

Figure S1. IQ-TREE Maximum likelihood concatenated phylogeny for <i>Ichnotropis</i> . Nodal support values represent ultrafast bootstrap values.....	2
Figure S2. MrBayes Bayesian inference concatenated phylogeny for <i>Ichnotropis</i> . Nodal support values represent posterior probabilities.....	3
Figure S3. IQ-TREE Maximum likelihood mitochondrial genes concatenated phylogeny for <i>Ichnotropis</i> . Nodal support values represent ultrafast bootstrap values.....	4
Figure S4. IQ-TREE Maximum likelihood nuclear genes concatenated phylogeny for <i>Ichnotropis</i> . Nodal support values represent ultrafast bootstrap values.....	5

Figure S1. IQ-TREE Maximum likelihood concatenated phylogeny for *Ichnotropis*. Nodal support values represent ultrafast bootstrap values.

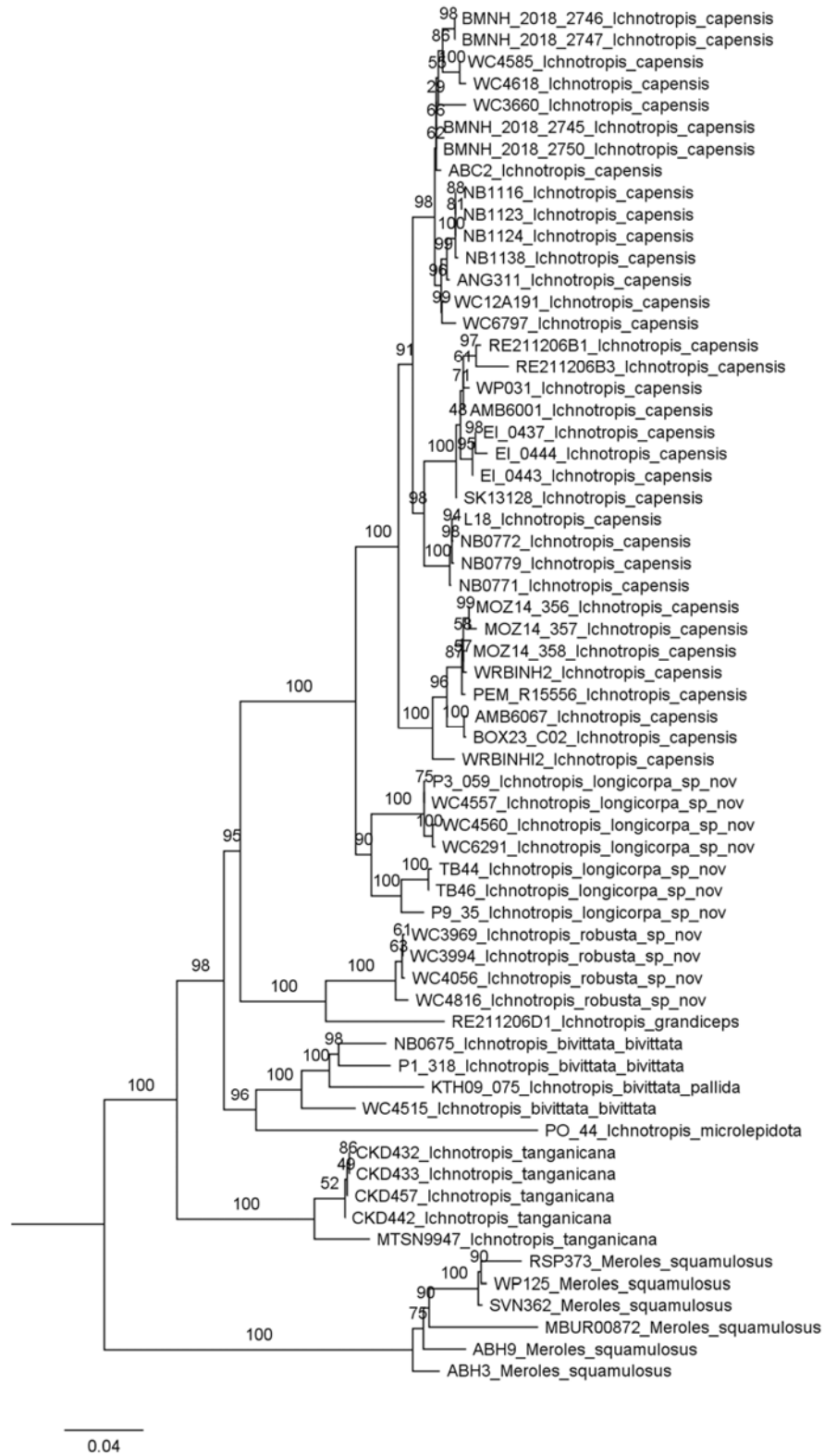


Figure S3. IQ-TREE Maximum likelihood mitochondrial genes concatenated phylogeny for *Ichnotropis*. Nodal support values represent ultrafast bootstrap values.

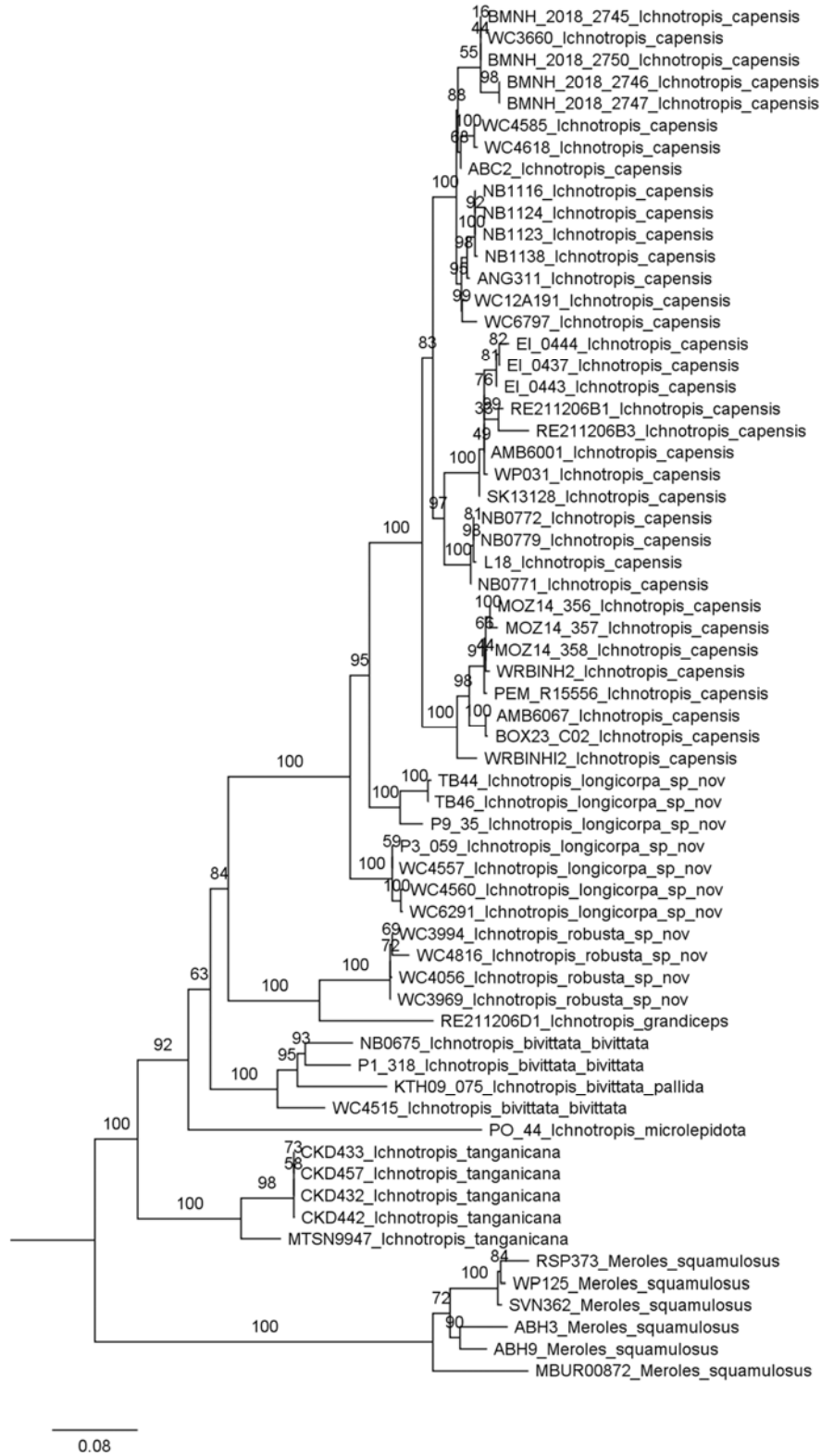


Figure S4. IQ-TREE Maximum likelihood nuclear genes concatenated phylogeny for *Ichnotropis*. Nodal support values represent ultrafast bootstrap values.



