

Chapter /



7 Social
7.1 Providing for all visitors



- Slalom spectator seating
- Retaining walls
- Linear parks
- Soccer spectator seating
- Walkways on weirs
- Lovers' Lane
- Extended spectator stand

environmental

heritage

social

sport

design response

7 SOCIAL FRAMEWORK

7.1 Providing for all visitors:

Athletes:

The existing clubhouses were incorporated into the development plan of Groenkloof campus.

The synthetic hockey and soccer facilities (that should be developed by specialists) are of international standards. The reinvented Kirkness brick flood light towers make the operation of an 24 hour sport facility possible.

The HPC is located near the existing cafeteria, library, residences and HPC School. The close proximity of the various facilities promotes integration and cooperation between students, professional sportsmen, women and younger pupils.

Families:

The linear parks with history walkways, picnic slopes and shady spots accommodate families visiting the sports park.

Physically challenged:

All history texts are translated into braille to accommodate the visually impaired.

Spectators:

Refreshment shops and ablution facilities are easily recognized and accessible. All spectator seating has shade trees. More parking has been provided for visitors and spectators along the ring road of the sports campus. The ring road around the sport campus and second entrance along Leyds Street enables large traffic volumes to flow through the campus.



FIGURE 236 – Walking in Lovers' Lane, Author, 2008

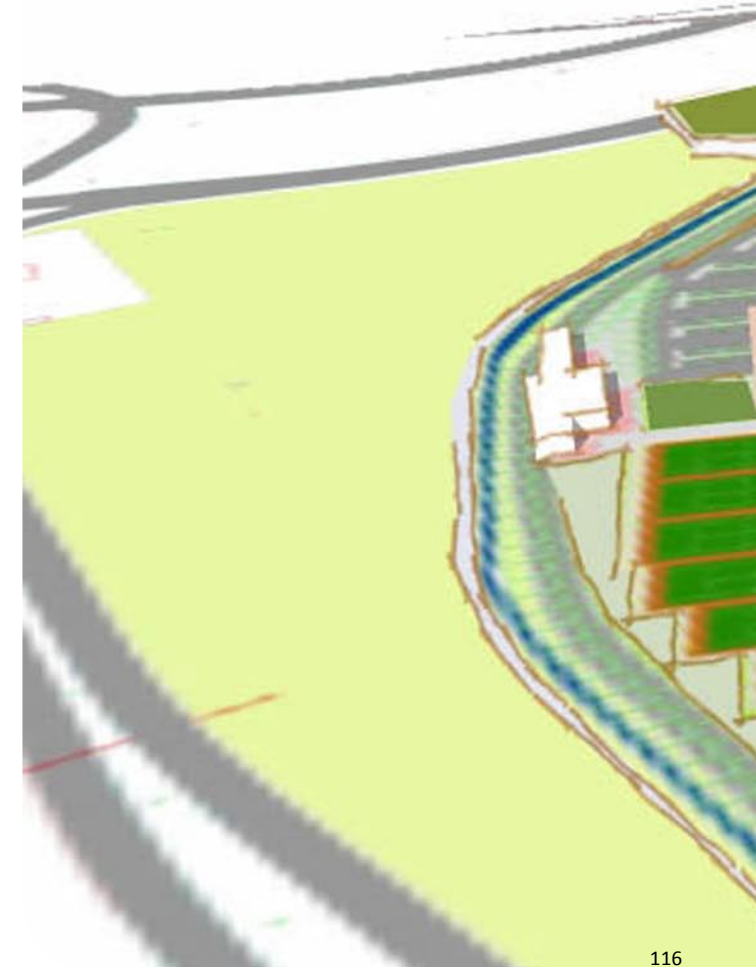


Figure 237 shows the social design guidelines setup in Chapter 3, implemented on Groenkloof campus.

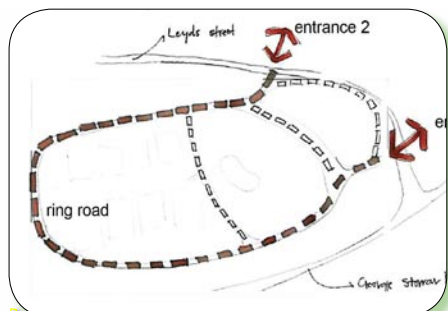


FIGURE 238 - Ring roads with new entrance



FIGURE 239 - Spectator seating

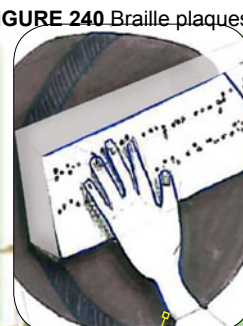


FIGURE 240 Braille plaques



FIGURE 241 - Walkway on berm

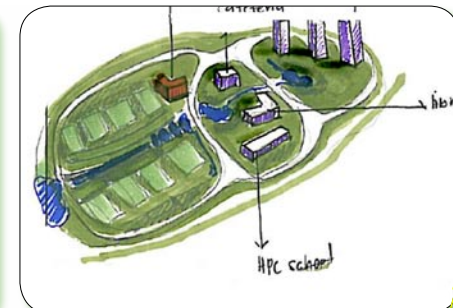


FIGURE 242 - HPC location

FIGURE 238 –242 Guideline sketches, Author, 2008

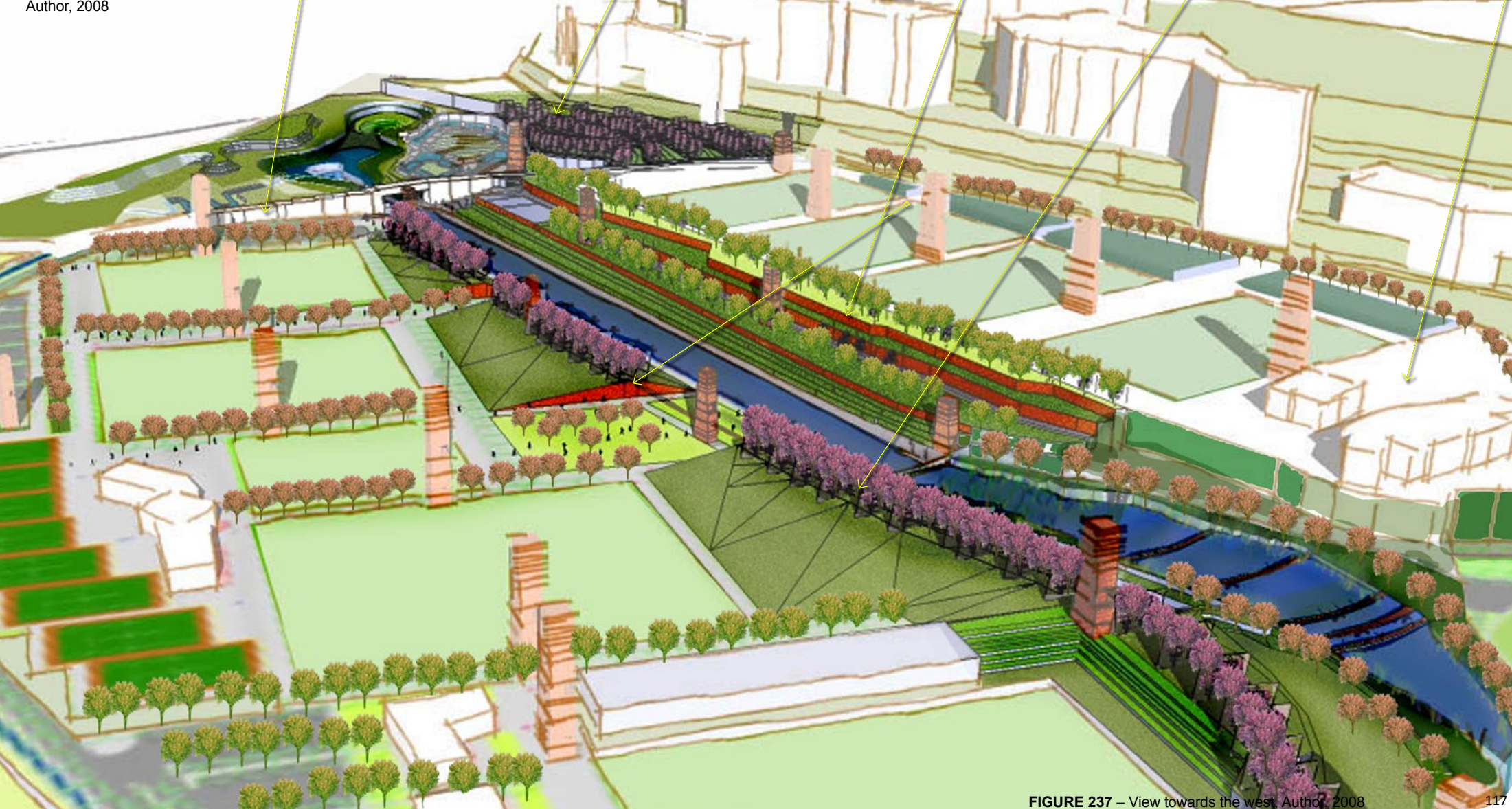


FIGURE 237 – View towards the west, Author, 2008