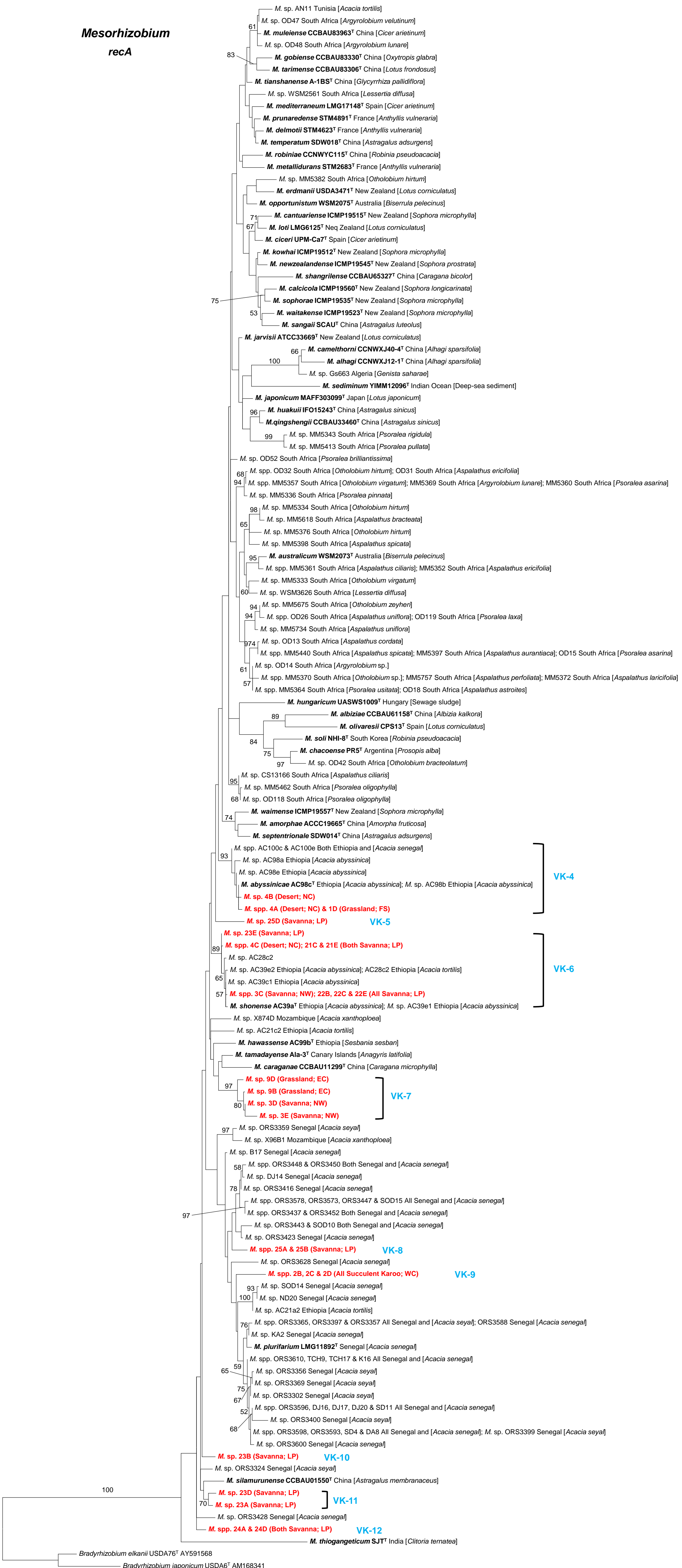


Mesorhizobium
recA



Suppl. Fig. S2 A *recA* maximum-likelihood phylogeny of the genus *Mesorhizobium*. Isolates from this study are indicated in red, followed by information for biome and province (abbreviated as for Table 1) from which the 'trapping' soil was collected. Demarcated lineages (VK-4 to VK-12) are indicated in blue. All *Mesorhizobium* type strains are in bold and all isolates appear with information regarding their country of origin and source or host. GenBank accession numbers and associated references for all the isolates in the phylogeny are listed in Suppl. Table S2. *Bradyrhizobium elkanii* and *B. japonicum* were used as the outgroup and their accession numbers are listed on the phylogeny. Bootstrap support of $\geq 50\%$ are indicated and the scale bar indicates the number of nucleotide substitutions per site.