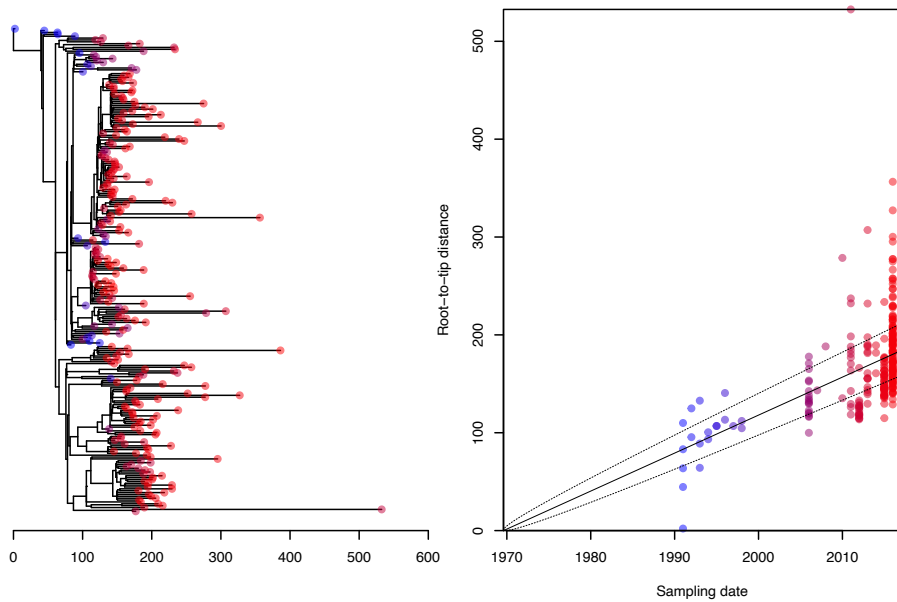
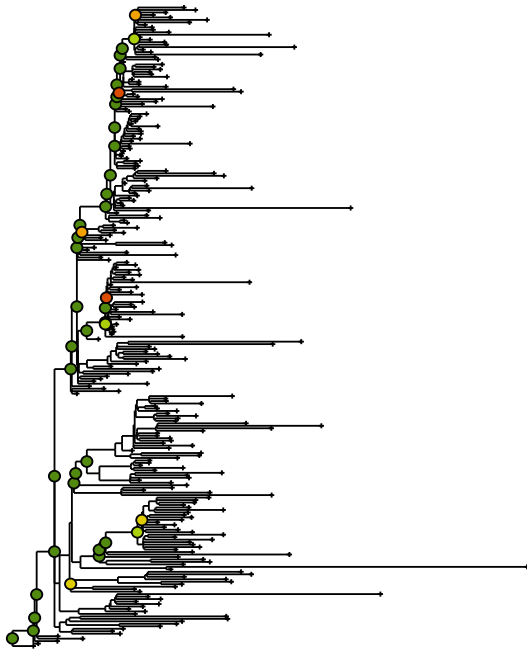


A

Rate=3.88e+00,MRCA=1969.60,R2=0.20,p<1.00e-04



B



S3 Figure. Temporal signal in phylogenetic tree of 259 *X. euvesicatoria* pv. *perforans* strains. (A) Correlation between sampling year and root-to-tip distance in maximum likelihood phylogenetic tree inferred from alignment of whole genome sequences. Output was generated from BactDating R package. (B) Temporal signal within the phylogenetic signal determined using PhyloStems tool. Tree is rooted as in Figure 2. Nodes with statistically significant temporal signals are indicated with colored circles. Adjusted R-squared values by color: dark green 0–0.2; light green 0.2–0.4; yellow 0.4–0.6; orange 0.6–0.8; red 0.8–1.