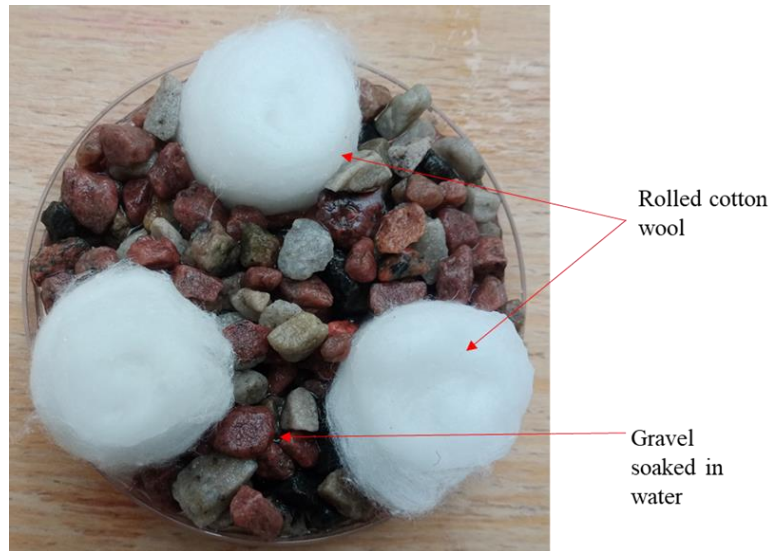


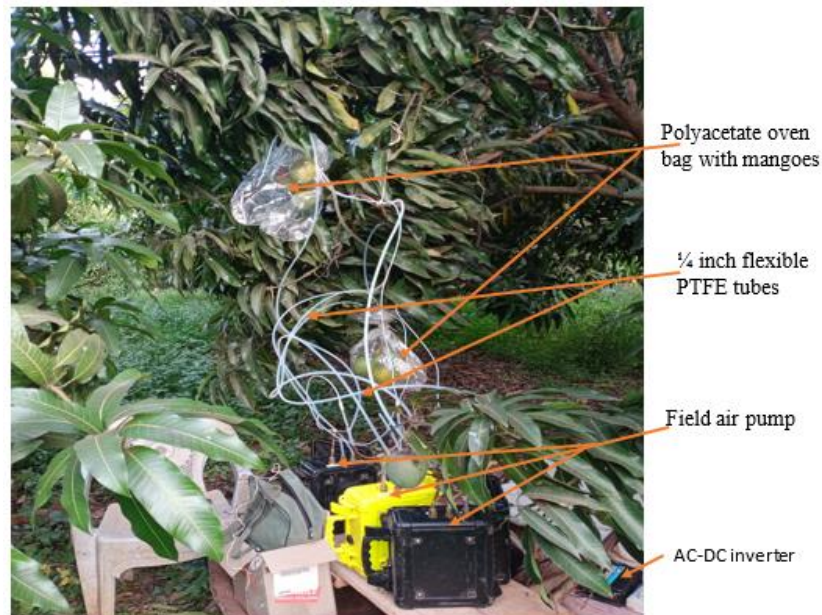
## Supplementary materials

### Supplementary Figure 1



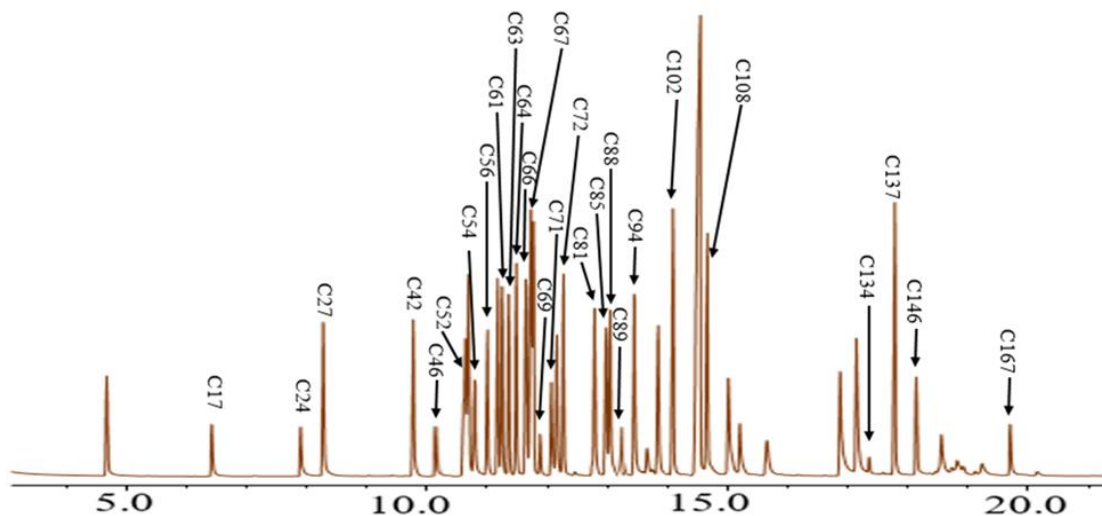
**Supplementary Figure S1:** Glass Petri-dish (90 × 15 mm) with water soaked gravel granules and rolled cotton wool for providing water to parasitoids.

### Supplementary Figure 2



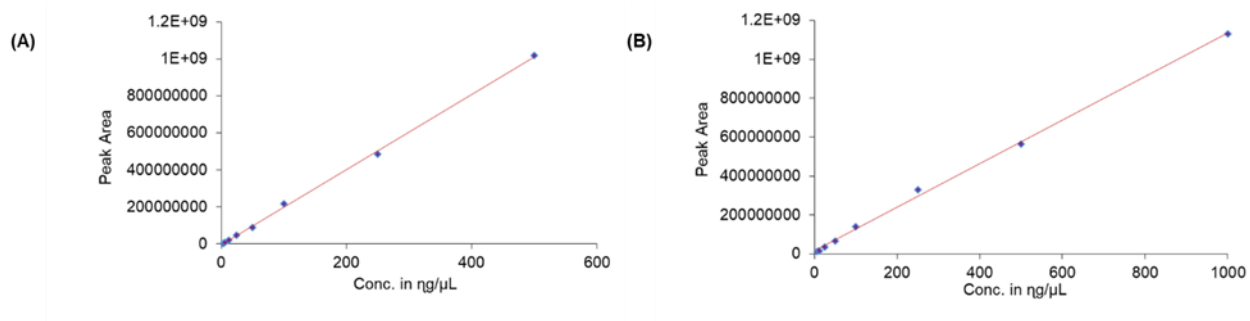
**Supplementary Figure S2:** A dynamic headspace trapping (DHT) system for the collection of headspaces from tree-attached mango fruits.

### Supplementary Figure 3



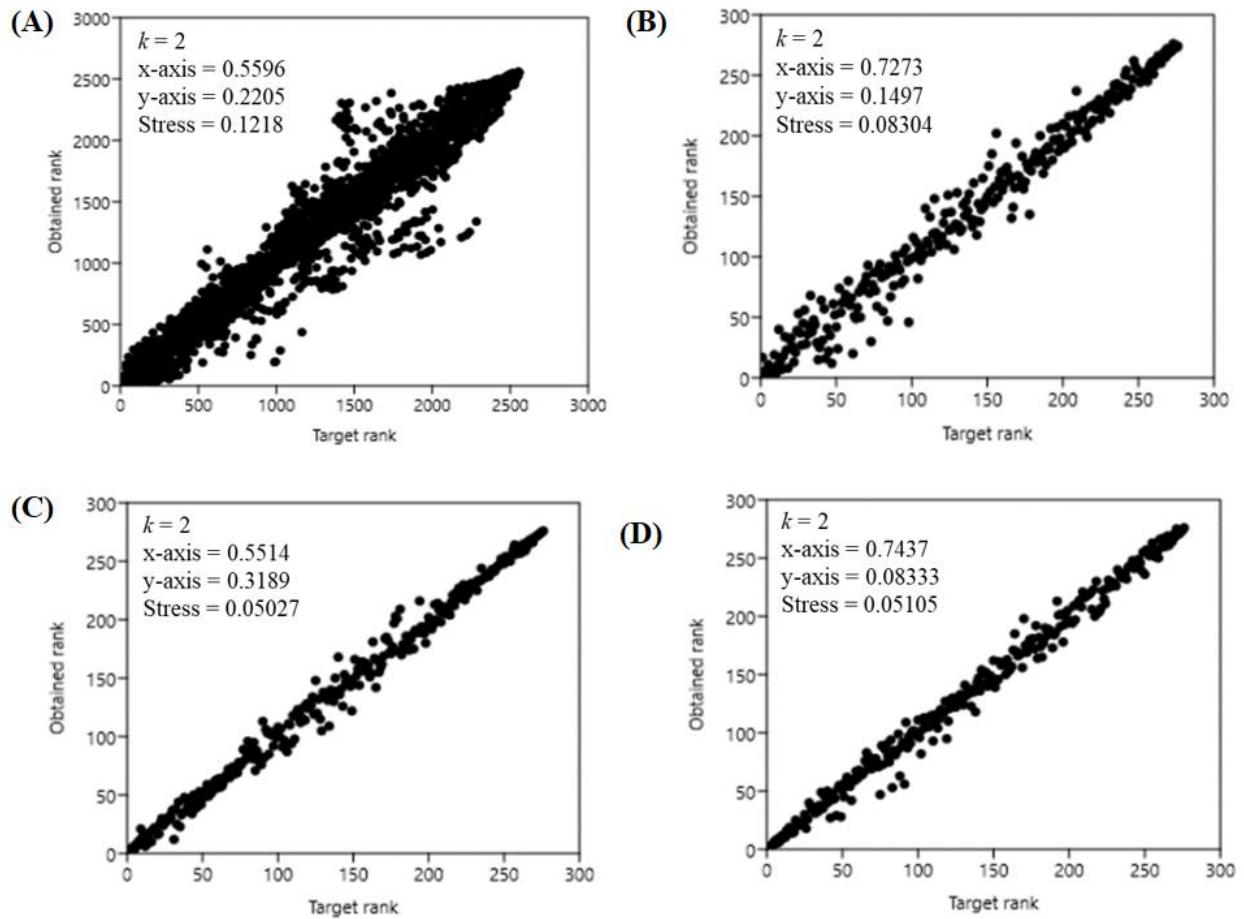
**Supplementary Figure S3:** Chromatogram of the synthetic standards used to confirm a number of the identified volatiles. Numbers correspond to the names of volatiles in Table 1

### Supplementary Figure 4



**Supplementary Figure S4:** Calibration curves of the linear equations of  $\alpha$ -pinene and  $\alpha$ -humulene that were used in the quantification of the identified volatiles

## Supplementary Figure 5



**Supplementary Figure 5:** The two dimensional ( $k = 2$ ) Shepard plots for the volatile release rates of the treatments of the (A) three mango varieties, (B) Kent mango variety, (C) Apple mango variety, and (D) Haden mango variety.