





# Camera trap-based estimates reveal spatial variability in African clawless otter population densities and behaviour

CANDICE B. LEWIS<sup>\*1,2</sup> , TSHEPISO L. MAJELANTLE<sup>2</sup>   
NATALIE S. HAUSSMANN<sup>3</sup>  and TREVOR MCINTYRE<sup>1,2</sup> 

**Abstract** Estimating the population size of shy and elusive species is challenging but necessary to inform appropriate conservation actions for threatened or declining species. Using camera-trap surveys conducted during 2017–2021, we estimated and compared African clawless otter *Aonyx capensis* population densities and activity times in six conserved areas in southern Africa. We used two different models to estimate densities: random encounter models and camera-trap distance sampling. Our results highlight a general pattern of higher estimated densities and narrower confidence intervals using random encounter models compared to camera-trap distance sampling. We found substantial variation in densities between study areas, with random encounter model estimates ranging between 0.9 and 4.2 otters/km<sup>2</sup>. Our camera-trap distance sampling estimates supported the relative density estimates obtained from random encounter models but were generally lower and more variable, ranging from 0.8 to 4.0 otters/km<sup>2</sup>. We found significant differences in otter activity patterns, with populations either being nocturnal, mostly nocturnal or cathemeral. As all study areas experience little human disturbance, our results suggest that there are large natural variations in otter densities and activity patterns between regions. When densities are converted to metrics that are comparable to previous studies, our estimates suggest that African clawless otter population numbers are generally lower than previously reported. This highlights a need for broader spatial coverage of otter population assessments and future studies to assess potential environmental drivers of spatial, and potentially temporal, variation in population numbers and activity patterns.

**Keywords** Activity patterns, African clawless otter, *Aonyx capensis*, camera traps, density estimates, distance sampling, otter conservation, random encounter model

\*Corresponding author, [candicelewis4u@gmail.com](mailto:candicelewis4u@gmail.com)

<sup>1</sup>Department of Life and Consumer Sciences, University of South Africa, Johannesburg, South Africa

<sup>2</sup>Mammal Research Institute, Department of Zoology and Entomology, University of Pretoria, Pretoria, South Africa

<sup>3</sup>Department of Geography, Geoinformatics and Meteorology, University of Pretoria, Pretoria, South Africa

Received 11 October 2023. Revision requested 23 January 2024.

Accepted 3 May 2024. First published online 21 February 2025.

The supplementary material for this article is available at [doi.org/10.1017/S003060532400084X](https://doi.org/10.1017/S003060532400084X)

## Introduction

Population metrics provide a guiding tool for conservation action and decision-making (Mace et al., 2008), which is particularly important within the context of accelerating declines in global biodiversity (IPBES, 2019). Such knowledge can be used to identify species and areas of conservation concern, monitor and mitigate potential environmental threats and direct limited resources towards achieving conservation goals. Reliable population estimates help to ensure decisions by policymakers, wildlife managers and conservation organizations are made based on the best available information.

Genetic analyses of faecal and hair samples allow for non-invasive individual recognition of animals (Mowry et al., 2011). Although such analyses could be combined with sign surveys to develop reliable density estimates (Hájková et al., 2009), the relatively high cost presents a barrier, and the genetic markers currently used for many otter species are not species-specific (Ponsonby et al., 2019). In addition, this method requires fresh samples to prevent DNA degradation, which can be difficult to obtain for elusive species (Majelantle et al., 2020). Radio tracking is another innovative method for reliably estimating population parameters (Millsbaugh & Marzluff, 2001; Gettelman et al., 2022), but it is invasive and often not practical because of the high cost and capture effort required for elusive animals. An alternative non-invasive method is the use of remote camera traps. Estimating population sizes from camera-trap images initially required individual animals to be recognizable through natural markings (e.g. unique patterns of stripes or spots) or invasive marking/tagging techniques (Hiby et al., 2009; ENETWILD Consortium et al., 2020). However, improvements in statistical models have revolutionized camera-trap monitoring of unmarked animals, offering a relatively non-invasive and economically viable alternative to traditional methods of estimating population numbers (Gilbert et al., 2020; Palencia et al., 2021). In addition, camera traps can be used to record animal behaviour with minimal disturbance (Rowcliffe et al., 2014; Wearn & Glover-Kapfer, 2017). This is particularly valuable for the

study of unmarked, rare, elusive and nocturnal animals, such as many otter species (Duplaix & Savage, 2018; Gil-Sánchez & Antorán-Pilar, 2020).

Otters are challenging to observe directly, resulting in the widespread use of field signs to indirectly estimate their abundance, behaviour, activity patterns and habitat preferences (Kruuk & Conroy, 1987; Stander, 1998; Sadlier et al., 2004). Although useful in confirming animal presence, there is no correlation between otter signs and population size or activity (Kruuk et al., 1986; Kruuk & Conroy, 1987; Gallant et al., 2007; Yoxon & Yoxon, 2014). Spraint surveys are commonly used to assess populations, yet sprainting often takes place in the water, or spraints may be washed away by rainfall or rising tides. Seasonal and regional differences in sprainting behaviour could further obscure the relationship between otter signs and population numbers (Kruuk et al., 1986; Kruuk, 2006). Density estimates based on sign indices should thus be interpreted with caution unless validated through other measures (e.g. direct observation, camera trapping, radio tracking or use of non-invasive genetic sampling).

The African clawless otter *Aonyx capensis* is widely distributed, from Senegal to Ethiopia and southwards to South Africa (Nel & Somers, 2007). It is found in diverse habitats, from marine areas to deserts, provided that permanent fresh water is available (Nel & Somers, 2007). Despite the species' widespread distribution, population counts are mostly restricted to South Africa, making these studies central to global conservation assessments. The species was recently reassessed as Near Threatened on the IUCN Red List, partly in response to reported declines of otter signs in the Drakensberg, South Africa (Perrin & Carugati, 2006; Kubheka et al., 2012), together with expected declines caused by anthropogenic changes (Jacques et al., 2021).

Current estimates of African clawless otter populations are based on a small number of studies. By measuring radio-isotopes in spraints from isotopically labelled free-roaming otters (Arden-Clarke, 1986) and/or sign abundance combined with direct observations (Verwoerd, 1987), densities of coastal populations in the Eastern and Western Cape of South Africa were estimated to be 1 otter/1.9–2.0 km. Density estimates in fresh water are more varied, varying from 1 otter/8–10 km (Zimbabwe; Butler & Du Toit, 1994) to 1 otter/3–4 km (Drakensberg; Rowe-Rowe, 1992) and 1 otter/1.25–2.50 km (Drakensberg; Perrin & Carugati, 2006). Notably, most of these inferences on population density are based on abundance indices (sign counts), and no studies have yet utilized radio tracking or non-invasive genetic sampling to estimate population numbers. Majelantle et al. (2021) estimated African clawless otter densities by applying random encounter models to camera-trap data collected from three study sites. Density estimates varied between  $0.73 \pm \text{SD } 0.24$  and  $8.30 \pm \text{SD } 2.40$  otters/km<sup>2</sup>, the latter at an artificially stocked fly-fishing estate.

Converting animal encounter rates from camera traps into density estimates requires the use of statistical models, depending on the information available. Capture–mark–recapture approaches, frequently used for monitoring carnivore populations, require individually recognizable animals. African clawless otters lack natural markings and would have to be captured and marked to apply this method. In contrast, random encounter models and camera-trap distance sampling do not require individual identification. Random encounter models (developed by Rowcliffe et al., 2008) estimate population density based on the rate of contact between animals and camera traps, applying a modified version of ideal gas theory. This model requires knowledge of animal movement data and makes a number of assumptions: (1) random placement of camera traps, (2) animal movements are independent of/not affected by cameras, (3) encounters are independent events, and (4) population closure (Rowcliffe et al., 2008, 2013). A key requirement of the approach is the random placement of camera traps to ensure the sample taken is representative of the study area and that camera placement does not bias outcomes (i.e. cameras are not located in places that animals preferentially use or avoid; Rowcliffe et al., 2013). In addition, surveys should last a minimum of 500 trap-days and at least 10 independent encounters should ideally be obtained for each random encounter survey (Rowcliffe et al., 2008). This model has been validated against density estimates derived using other methods (Manzo et al., 2012; Zero et al., 2013; Anile et al., 2014; Caravaggi et al., 2016; Pfeffer et al., 2018; Palencia et al., 2021). Where animal movement information is not available, and it is thus not possible to apply random encounter models, distance sampling offers an alternative to density estimation, provided that distances to animal encounters can be measured. Howe et al. (2017) extended the use of distance sampling to camera-trap data based on the rationale that infrared sensors are more likely to detect animals at close proximity and thus a detection probability can be fitted to the distance from an observed animal to the camera. Camera-trap distance sampling follows the same assumptions as random encounter models, with one addition: snapshot moments (i.e. pre-determined moments at which an animal could be detected) are selected independently of animal locations (Howe et al., 2017). This method has been shown to produce similar results to distance sampling using line transects (Corlatti et al., 2020) and has also been validated against other methods (Cappelle et al., 2019, 2021; Harris et al., 2020; Palencia et al., 2021).

We aimed to estimate and compare densities of African clawless otters at six study areas in southern Africa using random encounter models and camera-trap distance sampling as a corroborative methodology. This will serve as an empirical comparison for the recently developed

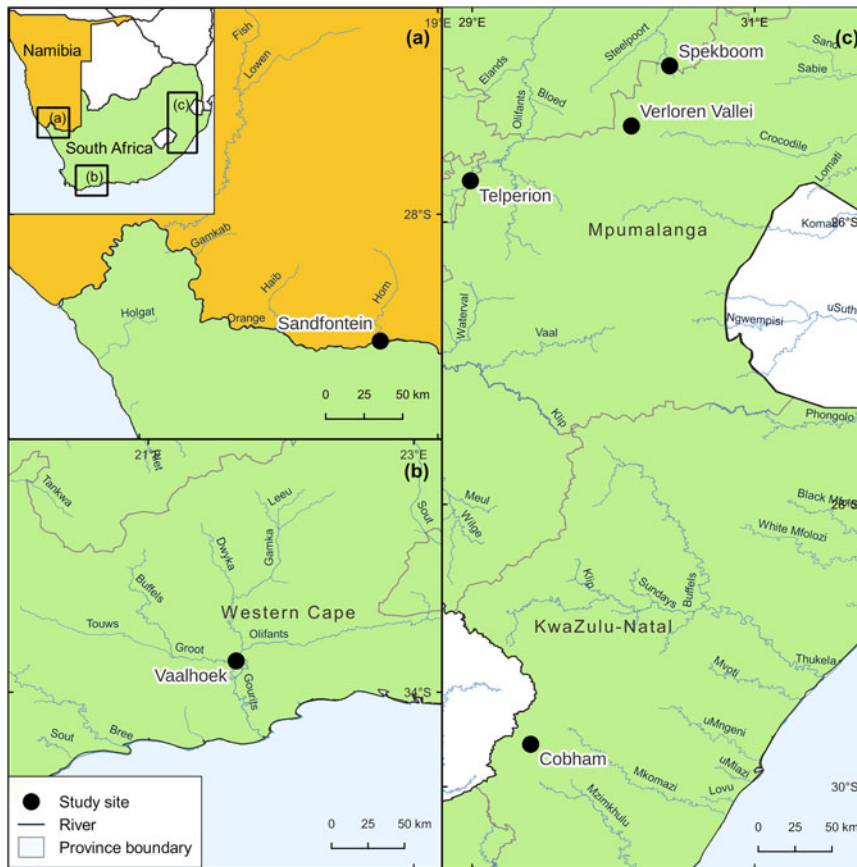


FIG. 1 Locations of study areas in southern Africa where we conducted camera-trap surveys of African clawless otters *Aonyx capensis*: (a) Sandfontein Nature Reserve; (b) Vaalhoek Nature Reserve; and (c) Spekboom river site (Rietvaley Farm), Verloren Vallei Nature Reserve, Telperion Nature Reserve and Cobham Nature Reserve.

camera-trap distance sampling method and, to the best of our knowledge, is its first application to a semi-aquatic species. In addition to calculating density estimates, we aimed to determine and compare activity patterns between study areas.

## Study areas

We collected data in five study areas in South Africa and one in Namibia (Fig. 1). We selected these sites to cover a variety of freshwater and surrounding terrestrial habitat types (Table 1) in ecologically conserved areas with little direct anthropogenic disturbance. Three study sites are in Mpumalanga Province, South Africa: Telperion Nature Reserve (73.5 km<sup>2</sup>), where we placed camera traps along the Wilge River; Verloren Vallei Nature Reserve (60 km<sup>2</sup>), where camera traps were placed along drainage lines and streams from the Lunsklip River; and Rietvaley Farm (Spekboom; 50.6 km<sup>2</sup>), with camera traps placed along the Spekboom River. The 520 km<sup>2</sup> Cobham Nature Reserve is located in the southern Maloti-Drakensberg, KwaZulu-Natal Province, South Africa; we positioned camera traps here along the Pholela River. In Vaalhoek Nature Reserve (12 km<sup>2</sup>) in the Gamkaberg, Western Cape, South Africa, we placed camera traps along the Gourits River. In the 213 km<sup>2</sup> Sandfontein Nature Reserve in Karas, Namibia,

camera traps were positioned along the Orange River. The camera-trap data collected at Verloren Vallei Nature Reserve and Cobham Nature Reserve were previously reported by Majelantle et al. (2021). Here, we re-analysed this dataset together with the data collected from the additional four study areas.

## Methods

### Camera-trap deployments

We set up camera traps at Spekboom (n = 23), Verloren Vallei (n = 22), Telperion (n = 35), Cobham (n = 24), Vaalhoek (n = 20) and Sandfontein (n = 22) during 2017–2021 over a period of 3,730 trap-days. We deployed Primos ProofCam3 (Primos Hunting, USA) and Spypoint Solar Dark (GG Telecom, Canada) camera traps (Table 2). The semi-aquatic habitat of African clawless otters does not allow for randomized placement of camera traps and we therefore adopted a supervised systematic design whereby cameras were placed systematically at set distance intervals inside riparian habitats at points that we considered accessible to otters (i.e. within 15 m of stream edges). We placed camera traps at distances of 200–300 m from one another, with the exact distance determined largely by environmental constraints. We

TABLE 1 The biomes, bioregions, vegetation types (Atlas of Namibia Project, 2002; SANBI, 2018), freshwater habitats (WWF & TNC, 2008), Strahler stream orders (DWS, 2020), altitudes and Köppen–Geiger climate classifications (Beck et al., 2018) at the study sites in southern Africa (Fig. 1), 50 m from the edge of the water on both sides of each river (i.e. a 100 m zone).

Study area	Biome	Bioregion	Vegetation type	Freshwater habitat type	Strahler stream order	Altitude (m)	Climate classification
Telperion	Grassland & savannah	Central Bushveld & Mesic Highveld Grassland	Loskop Mountain bushveld & Rand Highveld grassland	Temperate upland rivers	4	1,133–1,286	Temperate with dry winters & warm–hot summers (Cwa & Cwb)
Verloren Vallei	Grassland	Mesic Highveld Grassland	Steenkampsberg montane grassland	Temperate upland rivers	1	2,089–2,157	Temperate with dry winters & warm summers (Cwb)
Spekboom	Savannah	Central Bushveld	Ohrigstad Mountain bushveld	Temperate upland rivers	3	909–967	Temperate with dry winters & hot summers (Cwa)
Cobham	Grassland	Drakensberg Grassland & Sub-Escarpment Grassland	Drakensberg foothill moist grassland & Southern Drakensberg Highland grassland	Montane freshwaters	1	1,619–1,719	Temperate with dry winters & warm summers (Cwb)
Vaalhoek	Albany thicket	Albany thicket	Western Gwarrieveld	Temperate coastal rivers	5	220–231	Hot, arid, desert (BWh)
Sandfontein	Azonal vegetation, tree & shrub savannah, & Nama Karoo	Alluvial vegetation	Lower Gariep alluvial vegetation & Karas dwarf shrubland	Xeric freshwaters	7	221–232 m	Hot, arid, desert (BWh)

avoided placing cameras near otter latrines or signs to reduce sampling bias. We mounted camera traps to trees or wooden stakes at heights of 20–100 cm and set them to record image bursts of 3–4 images, with a 3 s delay between triggers. We marked out distances from each camera trap at 1 m intervals within the field of

view, up to a maximum distance of 15 m from camera traps, to provide in situ reference images for calibration of the detection distances of each recorded animal.

#### Camera-trap data analyses

We collected data by manually processing images, noting all otter detections. We then obtained density estimates by applying two different modelling techniques: random encounter models and camera-trap distance sampling (Rowcliffe et al., 2008; Howe et al., 2017).

#### Random encounter models

Random encounter models calculate density ( $D$ ) based on the number of independent detections of the target species, animal speed, survey effort and area of camera detection viewshed (Rowcliffe et al., 2008) using Equation 1:

$$D = \frac{y}{t} \times \frac{\pi}{Vr(2 + \theta)} \quad (1)$$

where  $y$  is the number of independent encounters of the target animal,  $t$  the number of trap-days (number of camera

TABLE 2 Synopsis of camera deployments for the study areas in southern Africa.

Study area	Camera traps (n)	Cameras used	Duration	Trap-days
Telperion	35	Primos	4 May–5 June 2017	930.5
Verloren Vallei	22	Primos	28 June–19 Aug. 2018	928.3
Cobham	24	Primos	9 Oct.–27 Nov. 2018	710.9
Spekboom	23	Primos	15 June–28 Aug. 2019	578.2
Vaalhoek	20	Primos, Spypoint	22 Sep.–29 Oct. 2020	389.9
Sandfontein	22	Primos, Spypoint	16–29 Sep. 2021	192.3

traps  $\times$  number of days),  $V$  the day range (distance travelled by the target animal per day),  $r$  the detection distance and  $\theta$  the effective detection angle ( $2a_i$ , where  $a_i$  is the angle between the midline of the camera's field of view and the detected animal, which is doubled for the full effective detection angle), with  $r$  and  $\theta$  together denoting the camera trap's effective detection zone.

Typically, threshold time intervals are used to define independent encounters, the duration of which is based on the movement patterns of the target species. Threshold time intervals are generally not necessary for top carnivores that move quickly with directional movement (Wearn & Glover-Kapfer, 2017). However, based on our knowledge of African clawless otter movement, we adopted a threshold time interval of 30 min between detections to guard against overestimating densities when using the random encounter model (Majelantle et al., 2021). We calculated trap-days ( $t$ ) by summing the individual time durations that camera traps were active for all camera traps. We estimated the day range of otters ( $V = 8.278$  km/day) using published VHF telemetry and movement data (Somers & Nel, 2004b; Majelantle et al., 2021). The estimation of  $r$  and  $\theta$  followed the methodology of Rowcliffe et al. (2011), which incorporates species- and survey-specific dimensions of the camera detection viewshed. We estimated both of these variables based on the locations of African clawless otters in each encounter, using the first image capture of each otter encounter. We estimated the detection distance ( $r$ ) by comparing the distance from the camera traps at which otters appeared in the images to the reference distances established during calibration. We estimated the angle of detection ( $a_i = \theta/2$ ) by superimposing detection images with overlays appropriate to the specific camera field of view. This approach seeks to measure the zone of detection for the specific target population, which is considered good practice when applying random encounter models (Palencia Mayordomo, 2021). We estimated the angle of detection in degrees and then converted this to radians. To this end, we estimated the field of view to be  $35^\circ$  for the Primos camera traps, derived from ex situ field trials conducted previously (McIntyre et al., 2020), and  $42^\circ$  for the Spypoint camera traps, based on manufacturer guidelines and performance reviews (Trailcampro, 2020). We conducted all statistical analyses applying random encounter models using the *remBoot* package (Caravaggi, 2017, 2022) in *R* 4.3.1 with the *RStudio* interface (R Core Team, 2023). After calculating density estimates we used non-parametric bootstrapping with 10,000 iterations (Rowcliffe et al., 2008) to calculate measures of variance, including standard error, standard deviation and 95% confidence limits.

### Distance sampling

Camera-trap distance sampling applies the well-established point transect method to camera traps. This method

accounts for imperfect detection by modelling detection probability as a function of the distance between cameras and detected animals using Equation 2 (Howe et al., 2017, 2019).

$$D = \frac{2t \sum_{k=1}^K n_k}{\theta w^2 \sum_{k=1}^K T_k \hat{P}_k} \quad (2)$$

where  $t$  denotes the duration of predetermined snapshot moments (e.g. 2 s),  $n_k$  the number of observations of target animals from each camera station (point  $k$ ),  $\theta$  the horizontal angle of view,  $w$  the truncation distance (after which distances are discarded),  $T_k$  the time of deployment (number of trap-days), and  $\hat{P}_k$  the estimated probability of obtaining an image of an animal (this is estimated using  $r_i$ , the radial distance to the midpoint of each animal from the camera).

Camera-trap distance sampling requires temporal availability to be incorporated within  $T_k$  to avoid negative bias (Howe et al., 2017). Therefore, we used animal activity to estimate the proportion of time when otters were available for detection (Table 3), and adjusted  $T_k$  using the outputs of fitted circular kernel models. Following Howe et al. (2017) we selected a short interval between snapshot moments ( $t = 1$  s) to obtain an adequate sample size given the fast-moving and elusive nature of the African clawless otter. We measured distances ( $r_i$ ) between the camera and each detected animal at each snapshot moment using the distance reference images. Animal reactivity (i.e. attraction or avoidance) to camera traps is likely to result in violation of distance sampling assumptions and could bias density estimates (Buckland et al., 2015; Howe et al., 2017; Cappelle et al., 2019, 2021; Bessone et al., 2020). To reduce this bias, we excluded all distance observations with obvious signs of animal reactivity (e.g. inspection and sniffing of cameras). We overcame bias associated with overdispersion and invalid goodness-of-fit tests (Howe et al., 2017, 2019) by using non-parametric bootstrapping, by resampling points with replacements (Buckland et al., 1993; Howe et al., 2017) and by adopting the two-step model selection procedure outlined in Howe et al. (2019). We determined truncation distances ( $w$ ) by visually inspecting the distribution

TABLE 3 Estimates of African clawless otter *Aonyx capensis* activity levels at the study areas in southern Africa (Fig. 3). The table shows the proportion of each day during which African clawless otters are active (time active; derived from encounters at each study area), the standard error (SE) and 95% confidence interval (CI).

Study area	Time active	SE	95% CI
Telperion	0.289	0.074	0.145–0.419
Verloren Vallei	0.446	0.122	0.185–0.636
Cobham	0.273	0.068	0.122–0.350
Spekboom	0.394	0.071	0.244–0.496
Vaalhoek	0.335	0.069	0.149–0.407
All areas combined	0.521	0.071	0.361–0.683

of radial detection distances for each study area and truncating where there was a paucity of data. As data of the focal species were sparse, we made conservative truncation decisions to achieve reasonable model fits. We considered eight different candidate models (uniform with 1–3 cosine adjustments, half normal with 0–2 cosine adjustments, and hazard rate with 0–1 simple polynomial adjustments), fitting the selected model to truncated radial distances whilst correcting for temporal availability. We estimated variance by using analytical/empirical design-based variance estimators (Fewster et al., 2009; Buckland et al., 2015) and 999 non-parametric bootstraps (Buckland et al., 1993; Howe et al., 2017). We conducted statistical analyses using the *Distance* (Miller et al., 2019) and *activity* (Rowcliffe, 2022) packages in R.

### Metric conversions

Resulting density estimates obtained from random encounter and camera-trap distance sampling models (otters/km<sup>2</sup>) cannot easily be compared with previously reported sign-based density estimates (otters/length of river) given the differences in reporting units. We therefore converted our random encounter model and camera-trap distance sampling estimates to numbers of otters/length of river for comparison. African clawless otters are thought to mostly restrict their terrestrial movements to within 50 m of freshwater bodies (Van Niekerk et al., 1998). We therefore assumed our estimates applied to an area extending 50 m from the edge of the water on both sides of each river (i.e. zone of 100 m width) and converted our estimates of otters/km<sup>2</sup> to otters/km of river by dividing them by 10 to accommodate a width of 100 m (100 m × 10 km = 1 km<sup>2</sup>; Fig. 2).

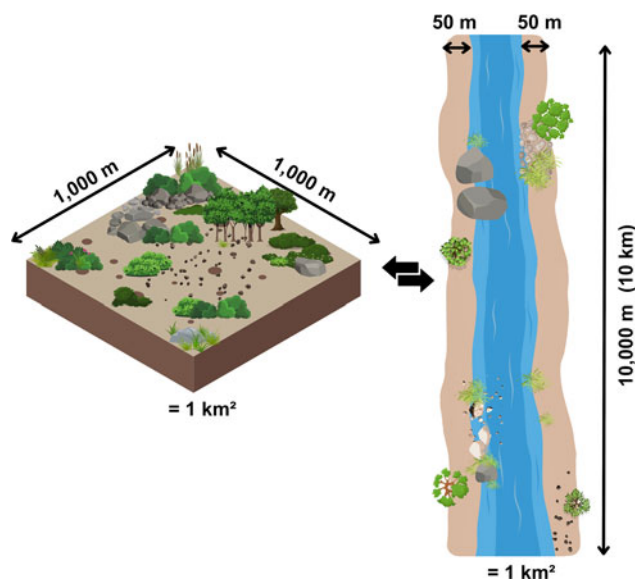


FIG. 2 Conceptual figure (not to scale) illustrating the conversion of population density estimates in otters/km<sup>2</sup> to otters/km length of river.

### Animal activity

Following Rowcliffe et al. (2014) we estimated animal activity levels by fitting circular kernel models to independent detections for each study area separately and combined (Fig. 3) using the R package *activity*. Although independent encounters are important for estimating animal abundance, applying the same time threshold used to define independent records to activity patterns has been criticized for introducing bias, inappropriately discarding data and potentially leading to misclassifications of activity patterns (Peral et al., 2022). To establish activity patterns, we therefore recorded all detections  $\geq 1$  min apart (Peral et al., 2022). We restricted all analyses of activity patterns to datasets with  $\geq 10$  detections of activity (Fisher, 1995). We adopted the same thresholds as Majelantle et al. (2021) in classifying otter behaviour as nocturnal, mostly nocturnal, diurnal, mostly diurnal or cathemeral. We designated detections that took place within 1 h before and after sunrise and sunset as crepuscular (Gomez et al., 2005). Using the *overlap* package (Ridout & Linkie, 2009; Meredith et al., 2024) in R we calculated the activity overlap coefficient ( $\Delta$ ) between study areas. As we had  $< 50$  detections at each study area, we adopted  $\Delta_1$  in our calculations (Meredith et al., 2024). We then used non-parametric bootstrapping to determine if differences in activity patterns between study areas were significant.

### Relative abundance indices

The survey in Sandfontein Nature Reserve in Namibia was severely disrupted by camera theft, reducing the total survey effort to 192 trap-days and six independent encounters, which is less than the minimum of 500 trap-days and 10 encounters recommended by Rowcliffe et al. (2008). Therefore, we did not obtain sufficient encounters to calculate density estimates for Sandfontein Nature Reserve, nor did we attempt to estimate activity patterns. Instead, we used the data from this site to calculate a relative abundance index by dividing the number of encounters by survey effort and multiplying by 100 to determine the number of encounters per 100 trap-days of survey effort (Wearn & Glover-Kapfer, 2017). We also calculated relative abundance indices for the other study areas for comparison.

## Results

### Random encounter model density estimates

Survey effort used for calculating density estimates from random encounter models varied from 390 trap-days (Vaalhoek Nature Reserve) to 931 trap-days (Telperion Nature Reserve). Spekboom River had the highest density of African clawless otters, which was six-fold higher than the lowest density estimate at Cobham Nature Reserve (Table 4). The survey in

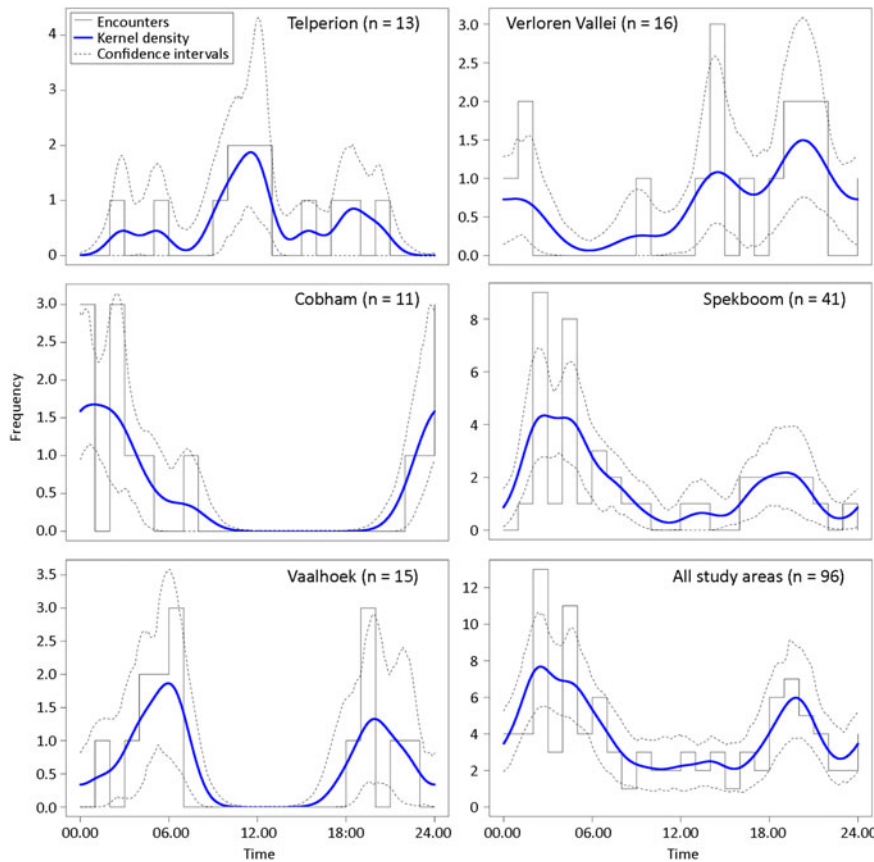


FIG. 3 Camera trap-derived daily activity patterns of African clawless otters at each study area in southern Africa separately and combined (Table 3).

Vaalhoek Nature Reserve suffered from significant animal interference, which reduced total survey effort and probably influenced the estimated densities for this area.

#### Distance sampling density estimates

A summary of the number of independent encounters and distance observations is provided in Table 5, together with the truncation decisions for each study area. Otters displayed obvious attraction to cameras at two study areas: Spekboom River and Vaalhoek Nature Reserve. We therefore excluded these distance observations prior to detection fitting. We selected the uniform key function with one cosine adjustment as the best model for Telperion Nature Reserve, Cobham Nature Reserve and Spekboom River, and the half normal function with no cosine adjustments for

Verloren Vallei Nature Reserve (Supplementary Material). We could not obtain a sufficient model fit for Vaalhoek Nature Reserve, and it was thus not possible to calculate a camera-trap distance sampling density estimate for this study area. The density estimates using camera-trap distance sampling are detailed in Table 6. The highest density of African clawless otters was estimated for Spekboom River, and the lowest for Cobham Nature Reserve.

#### Animal activity

African clawless otter activity varied between study areas in terms of both diel activity patterns (Fig. 3) and total percentage of each day that otters were active and therefore available for detection (Table 3). Verloren Vallei Nature Reserve had the highest (45% of each day) and Cobham

TABLE 4 Density estimates of African clawless otters in southern Africa calculated using random encounter models. The table shows the mean estimates, standard deviation (SD), standard error (SE), 95% confidence interval (CI) and the number of independent encounters (n).

Study area	Density (otters/km <sup>2</sup> )	SD	SE	95% CI	n
Telperion	0.901	0.127	0.035	0.913–0.918	13
Verloren Vallei	1.876	0.171	0.040	1.885–1.892	18
Cobham	0.705	0.114	0.038	0.713–0.718	9
Spekboom	4.192	0.587	0.109	4.223–4.246	30
Vaalhoek	2.010	0.556	0.148	2.108–2.130	14
Sandfontein	NA	NA	NA	NA	6

TABLE 5 Survey-specific information used in the calculation of camera-trap distance sampling estimates of African clawless otter population densities in southern Africa. For each study area, the table shows the number of independent encounters (n), number of distance observations before exclusions and truncations (total photos), number of distance observations after excluding camera reactivity and truncations (photos after exclusions) and the truncation distance beyond which detections were discarded.

Study area	n	Total photos	Photos after exclusions	Truncation (m)
Telperion	13	48	47	5
Verloren Vallei	18	28	28	5
Cobham	9	42	36	6
Spekboom	30	300	190	5
Vaalhoek	14	52	31	NA

Nature Reserve the lowest activity levels (27% of each day). We captured 91% of otter activity at Cobham Nature Reserve at night, suggesting that this population is nocturnal. We recorded 75% of otter activity at Verloren Vallei Nature Reserve at night, and we therefore classified this population as mostly nocturnal. We classified all remaining otter populations as cathemeral, with 66%, 60% and 31% of otter activity recorded at night at Spekboom River, Vaalhoek Nature Reserve and Telperion Nature Reserve, respectively (Supplementary Material). Of all activity detections ( $\geq 1$  min apart) across all study areas, 65% occurred at night. There were significant overlaps in activity patterns between eight of the 10 study area combinations compared (Fig. 4). The greatest difference in activity patterns was between Cobham Nature Reserve and Telperion Nature Reserve ( $76.3 \pm 10.4\%$  difference in activity), and the highest significant overlap was between Cobham Nature Reserve and Spekboom River ( $57.2 \pm SE 10.8\%$  similarity in activity patterns).

Relative abundance indices

Relative abundance indices ranged from 1.27 encounters per 100 trap-days in Cobham Nature Reserve to 5.19 in

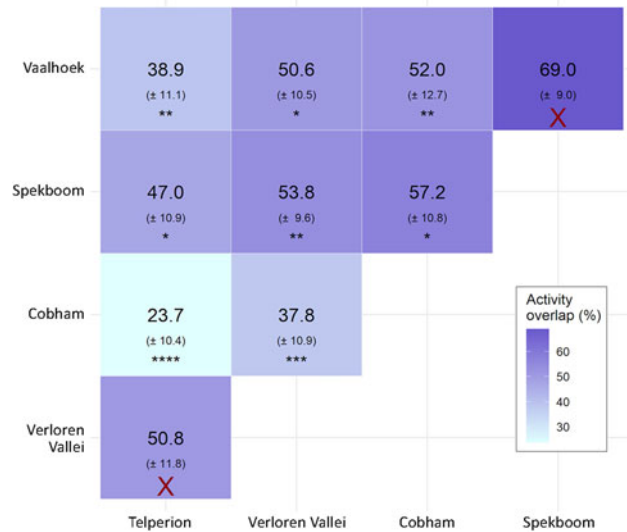


FIG. 4 African clawless otter activity overlaps between study areas in southern Africa and standard errors in parentheses, expressed as percentage values. X, no evidence for significant differences ( $P > 0.05$ ); \* $P \leq 0.05$ ; \*\* $P \leq 0.01$ ; \*\*\* $P \leq 0.001$ ; \*\*\*\* $P \leq 0.0001$ .

Spekboom River, with intermediate values of 1.40 in Telperion Nature Reserve, 1.94 in Verloren Vallei Nature Reserve, 3.12 in Sandfontein Nature Reserve and 3.59 in Vaalhoek Nature Reserve.

Discussion

Our results obtained from both the random encounter models and camera-trap distance sampling indicate significant variance in the population densities of African clawless otters between five natural areas in southern Africa. These estimates are summarized in Table 7, together with previous estimates and metric conversions for ease of comparison. Metric conversions (from otters/km<sup>2</sup> to otters/km of river) are affected by the distance considered likely to be used by otters on either side of water bodies. Our assumption that otters predominantly make use of areas up to 50 m from rivers (based on van Niekerk et al., 1998) may be an

TABLE 6 Distance sampling mean density estimates and measures of variances of African clawless otter population densities for each study area in southern Africa. Measures of uncertainty are presented using two approaches: 999 non-parametric bootstraps, resampling with replacement, and the default analytical variance function in the Distance package in R, based on Fewster et al. (2009). For each approach, the table shows the standard error (SE), 95% confidence interval (CI) and coefficient of variation (CV).

Study area	Model <sup>1</sup>	Density (otters/km <sup>2</sup> )	Bootstrapping			Analytical		
			SE	95% CI	CV	SE	95% CI	CV
Telperion	uni1	0.656	0.50	0.11–2.05	0.73	0.32	0.27–1.63	0.48
Verloren Vallei	hno	0.770	0.53	0.37–2.33	0.52	0.34	0.33–1.79	0.45
Cobham	uni1	0.541	0.35	0.15–1.50	0.56	0.21	0.26–1.15	0.39
Spekboom	uni1	4.045	2.13	1.28–9.55	0.48	2.31	1.36–12.01	0.57

<sup>1</sup>uni1, uniform function with one cosine adjustment; hno, half normal function with zero adjustments.

TABLE 7 Comparison of our reported density estimates of African clawless otters with previous freshwater estimates in natural areas in southern Africa. We used a 100 m wide zone to convert between otters/km<sup>2</sup> and otters/km of river (Fig. 2).

Study area	Reported value	Source	Method	<i>x</i> otters/ km <sup>2</sup>	<i>x</i> otters/ km	1 otter/ <i>x</i> km
Telperion	0.901 otters/km <sup>2</sup>	This study	Random encounter model	0.90	0.09	11.10
Telperion	0.656 otters/km <sup>2</sup>	This study	Camera-trap distance sampling	0.66	0.07	15.24
Verloren Vallei	2.067 otters/km <sup>2</sup>	Majelantle et al. (2021)	Random encounter model	2.07	0.21	4.84
Verloren Vallei	1.876 otters/km <sup>2</sup>	This study	Random encounter model	1.88	0.19	5.33
Verloren Vallei	0.770 otters/km <sup>2</sup>	This study	Camera-trap distance sampling	0.77	0.08	12.99
Kamberg, Drakensberg	1 otter/3–4 km of river	Rowe-Rowe (1992)	Sign survey	2.50–3.34	0.25–0.33	3.00–4.00
Multiple areas, Drakensberg	1 otter/1.25–2.5 km of river	Carugati (1995); Perrin & Carugati (2006)	Sign survey	4.00–8.00	0.40–0.80	1.25–2.50
Cobham, Drakensberg	1 otter/1.7–2.5 km of river	Carugati (1995)	Sign survey	4.00–5.88	0.40–0.59	1.70–2.50
Cobham, Drakensberg	1 otter/2.5 km of river	Perrin & Carugati (2006)	Sign survey	4.00	0.40	2.50
Cobham, Drakensberg	0.729 otters/km <sup>2</sup>	Majelantle et al. (2021)	Random encounter model	0.73	0.07	13.72
Cobham, Drakensberg	0.705 otters/km <sup>2</sup>	This study	Random encounter model	0.71	0.07	14.18
Cobham, Drakensberg	0.541 otters/km <sup>2</sup>	This study	Camera-trap distance sampling	0.54	0.05	18.48
Spekboom	4.192 otters/km <sup>2</sup>	This study	Random encounter models	4.19	0.42	2.39
Spekboom	4.045 otters/km <sup>2</sup>	This study	Camera-trap distance sampling	4.05	0.40	2.47
Olifants and Eerste rivers, Western Cape	1.530 otters/km of river	(Somers, 2001)	Radioactive scats	15.30	1.53	0.65
Vaalhoek, Western Cape	2.010 otters/km <sup>2</sup>	This study	Random encounter model	2.01	0.20	4.98
Kairezi river, eastern Zimbabwe	1 otter/8–10 km of river	Butler & Du Toit (1994)	Sign survey	1.00–1.30	0.10–0.13	8.00–10.00

overestimate, and more conservative assumptions would result in lower converted values than what we report here. Nevertheless, our findings suggest that previous sign-based surveys overestimated otter numbers and that smaller populations of African clawless otters are persisting in such areas. For example, previous density estimates from Drakensberg based on sign surveys vary from 1 otter/3–4 km (Rowe-Rowe, 1992) to 1 otter/1.25–2.50 km (Perrin & Carugati, 2006; Rowe-Rowe, 2016), whereas previous Cobham Nature Reserve (southern Drakensberg) density estimates based on sign are 1 otter/1.7–2.5 km (Carugati, 1995; Perrin & Carugati, 2006). The metrics reported in Majelantle et al. (2021) convert to 1 otter/13.7 km of river for Cobham Nature Reserve, and our densities based on random encounter models are consistent with these values and convert to estimates of 1 otter/14.2 km ( $0.8 \pm \text{SD } 0.1/\text{km}^2$ ). The mean camera-trap distance sampling density

estimate at Cobham Nature Reserve ( $0.54/\text{km}^2$ ) equates to an estimate of 1 otter/18.5 km.

The variability in population density estimates between sites highlights a need for much broader spatial coverage of assessments and cautions against deriving total population estimates from studies conducted in relatively few areas. There are no previous density estimates from Telperion Nature Reserve, Vaalhoek Nature Reserve or Spekboom River, and our estimates serve as baselines for future studies of possible changes in the abundance and distribution of otters.

Camera-trap distance sampling models are prone to underestimating density values (Corlatti et al., 2020; Palencia et al., 2021). In our study the camera-trap distance sampling results were also lower than those from the random encounter models, with wider confidence intervals around estimated densities for all study areas and lower

overall density estimates in all sampled populations. The tendency to obtain lower camera-trap distance sampling density estimates can be partially explained by delays between trigger events of camera traps, resulting in camera traps not always recording complete trajectories of animals moving through the field of view of the camera. In our study we set camera traps to have trigger delays of 3 s, which was the minimum delay possible for one of the camera trap models used (Primos). This does not affect the density estimates obtained using random encounter models in the same way as it does for camera-trap distance sampling, as only the first image within the sequence is used for the encounter rate in random encounter models and animal speed was determined independently using published movement data. However, in camera-trap distance sampling distances are recorded at times that align with predetermined snapshot moments, and gaps in the sequence of fixed images, caused by trigger delay or camera malfunction, can therefore lead to underestimates of the total number of animal observations. For this reason, Howe et al. (2017) recommend that cameras should have the potential to be triggered again immediately or after minimal delay. Furthermore, Buckland et al. (2015) recommend a minimum of 10–20 replicate points (i.e. independent encounters) and at least 75–100 distance observations for point transect sampling, with a lesser threshold of 60–80 observations for line transects. Four of the five study areas violated the recommended number of distance observations (minimum = 28; maximum = 300), which further explains the wide confidence intervals around the camera-trap distance sampling estimates reported here.

Insufficient observations were considered less likely to have influenced our estimates based on random encounter models. Rowcliffe et al. (2008) suggest that a minimum of 500 trap-days should be obtained for each random encounter survey. All of our surveys exceeded this recommendation, except for that at Vaalhoek Nature Reserve. Here, interference by other animals such as cattle *Bos taurus* and chacma baboon *Papio ursinus* resulted in substantial disturbance to camera traps and only 390 effective trap-days. As such, our estimated population densities for this site are probably underestimates. Our results may also have been influenced by violations of model assumptions. For example, we placed camera traps at areas reasonably accessible to otters and thus potentially violated the assumption of random camera placements relative to animals (Cusack et al., 2015; Howe et al., 2017). However, we placed camera traps independently of otter signs, thereby following the random ideal as closely as possible, and any bias is therefore likely to be minimal. Furthermore, we cannot be certain that the populations surveyed were closed without obtaining home range data at each study area (Rowcliffe et al., 2008). Although comparatively little is known of sociality in African clawless otters, their typical solitary or paired occurrence and occasional associations in small family groups

(Somers & Nel, 2013) suggest that immigration or emigration of individuals would have been unlikely during the survey periods reported here. In addition, it is possible that the 200–300 m distance intervals between cameras violated the assumption of independent observations. However, we are of the opinion that the  $\geq 30$  min time interval derived from recent telemetry data collected in freshwater habitats (Majelantle et al., 2021) adequately mitigates potential bias. Nevertheless, we advocate for further research using telemetry in the future, particularly with a view towards establishing home ranges in different study areas, which could be used to guide survey design. Lastly, detection probabilities of camera traps are not perfect and probably result in further underestimation of true population densities (McIntyre et al., 2020). Although such potential model violations were considered unlikely to have substantially influenced our density estimates, future assessments will benefit from combining additional approaches to density estimation. For example, pairing camera trap-based assessments with mark–recapture model outputs based on genetic analyses of faecal and hair samples (Hájková et al., 2009; Mowry et al., 2011) or using radio tracking (e.g. McIntyre & Roux, 2024) could potentially be used to validate estimates.

Activity levels (Table 3) were examined as part of the camera-trap distance sampling density calculation. These results and the variance in diel patterns (Fig. 3) between study areas raise questions regarding the drivers of the observed activity patterns. African clawless otters are considered crepuscular (mostly active at dawn and dusk) in freshwater areas (Somers & Nel, 2004b) and more nocturnal in coastal regions (Arden-Clarke, 1986). In contrast, our results indicate that African clawless otters are either cathemeral (Spekboom River, Vaalhoek Nature Reserve and Telperion Nature Reserve), mostly nocturnal (Verloren Vallei Nature Reserve) or nocturnal (Cobham Nature Reserve). Crepuscular activity was only recorded in three of the study areas: Spekboom River (24%), Vaalhoek Nature Reserve (40%) and Telperion Nature Reserve (8%). Verloren Vallei Nature Reserve had the highest overall activity levels (47% of each day), and Cobham Nature Reserve the lowest (27% of each day). The variance in activity levels and patterns suggests that African clawless otters exhibit substantial behavioural plasticity, adapting their activity levels and patterns to their local environment. Probable influences include prey availability, anti-predator behaviour and the potential impacts of human activities (Majelantle et al., 2021). Dietary studies have furthermore illustrated such plasticity and suggest African clawless otters are able to exploit spatio-temporal variation in the availability of prey types (Jordaan et al., 2019).

The low number of activity detections ( $n = 11\text{--}41$ ) may have influenced the reliability of our kernel estimates (Rowcliffe et al., 2014; Wearn & Glover-Kapfer, 2017). Ridout & Linkie (2009) suggest that 25 detections could be

sufficient to gain meaningful insights into activity patterns, whereas Rowcliffe et al. (2014) recommend c. 100 detections to obtain reasonable precision. Other studies have used as few as four (Fancourt et al., 2015), 10 (Majelantle et al., 2021), 14 (Delibes-Mateos et al., 2014), 15 (Wearn et al., 2022) or 18 (Gerber et al., 2012) detections to estimate activity patterns. Although a larger number of detections is desirable, it is often difficult to achieve such detection numbers for elusive species. However, to avoid discarding important behavioural data, we recommend adopting the approach of Peral et al. (2022) and retaining all detections of study animals separated by more than 1 min intervals.

It was not possible to estimate density at Sandfontein Nature Reserve because of camera theft, which significantly reduced the total survey effort. Instead, we report a relative abundance of 3.1 encounters per 100 trap-days for this area. This constitutes the first estimate of African clawless otter population abundance within the Desert/Nama Karoo biomes and only the second within Namibia; the first being by Abiatar et al. (2024) who recently reported a relative abundance index for African clawless otters in northern Namibia of only 0.3 based on an extensive camera trapping survey of 967 camera days. Relative abundance indices from the remaining study areas follow the general trends reflected in our density estimates.

The variance in density estimates and activity patterns reported here is probably influenced by variability in natural environments, including prey type, availability and abundance (Nel & Somers, 2007; Jordaan et al., 2015, 2019), presence of adequate cover for dens and holts (Perrin & Carugati, 2000; Somers & Nel, 2004a), inter-specific competition (Somers & Purves, 1996) and possible risk of predation (Kruuk & Goudswaard, 1990; Somers, 2000). This natural variation, independent of anthropogenic influence, has implications for estimates of total African clawless otter population sizes that have previously assumed constant population densities across freshwater systems (Somers & Nel, 2013) and suggests a need for obtaining population density estimates across habitats to inform habitat distribution models for the species. Furthermore, climate change is likely to result in range contractions of African clawless otters across their distribution and loss of protection as suitable ranges within protected areas contract (Cianfrani et al., 2018). Understanding how population densities are associated with habitats and environmental conditions is therefore likely to become increasingly important to inform conservation planning. Future research on population estimates and conservation assessments of this Near Threatened (Jacques et al., 2021) species should consider broader spatial coverage and investigate environmental drivers of population density and activity patterns. In addition, future research should prioritize the use of radio tracking and non-invasive genetic sampling to provide greater insights into the activity

patterns, home ranges and spatial distributions and densities of African clawless otters, which could greatly advance the field, particularly if paired with additional methods such as camera trapping.

**Author contributions** Conceptualization and study design: CBL, TM; fieldwork and logistical support: all authors; data analysis: CBL; writing and revision: all authors.

**Acknowledgements** We thank the anonymous reviewers and Martin Fisher for their insightful comments; Arantxa Blecher, Tenzin Philips, Jancke Loggenberg, Marie de Vos, Ayesha Bobat, Aaliyah Motala, Yasoda Veerasamy, Francois Winterbach, Tracy Basch, Tristan Russell, Juan Scheun, Jamey Gulson and Stephanie Nicolaides for assistance with deployment and retrieval of camera traps; and Dirk Winterbach (Rietvaleey Game Ranch), Erika Kotze, Dirk Kotze, Sean Gilbertson (Sandfontein Lodge) and Duncan MacFadyen from Oppenheimer Generations Research and Conservation for their welcome and for granting permission to access their properties. Financial support was provided by the South African Department of Science and Innovation through the National Research Foundation (Grant number 116332) and the IUCN Species Survival Commission Otter Specialist Group.

**Conflicts of interest** None.

**Ethical standards** This research abided by the *Oryx* guidelines on ethical standards. Any images of people captured without their consent were immediately treated as sensitive and either removed or provided to the police where camera theft occurred. To ensure that our research was conducted in a socially responsible manner that did not violate privacy or cause unnecessary harm, we collaborated with reserve owners and informed employees and guests about camera-trapping operations, engaged with guests regarding our work, deleted innocuous images taken of people where consent had not been obtained and carefully vetted images before sharing them with law enforcement. Notably, all images provided to the police were knowingly taken by the suspects themselves, minimizing privacy concerns or harm. Data were collected under ethical clearance received from the University of Pretoria Animal Use and Care Committee (Project number EC012-18), the University of KwaZulu-Natal Animal Research Ethics Committee (Project number AREC/033/018) and the University of South Africa, College of Agriculture and Environmental Sciences Animal Research Ethics Committee (2019/CAES\_AREC/110). Research permits were provided by Cape Nature, Ezemvelo KwaZulu-Natal Wildlife and Mpumalanga Tourism and Parks Agency to conduct research in protected areas. The Namibian National Commission on Research, Science and Technology (NCRST) provided authorization for the field research along the Orange River, Namibia (Authorization No. AN20200701).

**Data availability** Data and code are available from the corresponding author upon reasonable request.

## References

- ABIATAR, L.Y.N., EISEB, S.J., UISEB, K.H. & MCINTYRE, T. (2024) The presence and relative abundance of otters (Carnivora: Mustelidae) in northern Namibia. *IUCN Otter Specialist Group Bulletin*, 41, 174–181.
- ANILE, S., RAGNI, B., RANDI, E., MATTUCCI, F. & ROVERO, F. (2014) Wildcat population density on the Etna volcano, Italy: a comparison of density estimation methods. *Journal of Zoology*, 293, 252–261.

- ARDEN-CLARKE, C.H.G. (1986) Population density, home range size and spatial organization of the Cape clawless otter, *Aonyx capensis*, in a marine habitat. *Journal of Zoology*, 209, 201–222.
- ATLAS OF NAMIBIA PROJECT (2002) *Atlas of Namibia Project*. Directorate of Environmental Affairs, Ministry of Environment and Tourism, Government of South Africa, Pretoria, South Africa. [209.88.21.36/Atlas/Atlas\\_web.htm](https://doi.org/10.25209/209.88.21.36/Atlas/Atlas_web.htm) [accessed 26 September 2023].
- BECK, H.E., ZIMMERMANN, N.E., MCVICAR, T.R., VERGOPOLAN, N., BERG, A. & WOOD, E.F. (2018) Present and future Köppen–Geiger climate classification maps at 1-km resolution. *Scientific Data*, 5, 180214.
- BESSONE, M., KÜHL, H.S., HOHMANN, G., HERBINGER, I., N'GORAN, K.P., ASANZI, P. et al. (2020) Drawn out of the shadows: surveying secretive forest species with camera trap distance sampling. *Journal of Applied Ecology*, 57, 963–974.
- BUCKLAND, S.T., ANDERSON, D.R., BURNHAM, K.P. & LAAKE, J.L. (1993) *Distance Sampling: Estimating Abundance of Biological Populations*. Springer, Dordrecht, The Netherlands.
- BUCKLAND, S.T., REXSTAD, E.A., MARQUES, T.A. & OEDEKOVEN, C.S. (2015) *Distance Sampling: Methods and Applications*. Springer, Cham, Switzerland.
- BUTLER, J.R.A. & DU TOIT, J.T. (1994) Cape clawless otter conservation and a trout river in Zimbabwe: a case study. *Oryx*, 28, 276–282.
- CAPPELLE, N., DESPRÉS-EINSPENNER, M., HOWE, E.J., BOESCH, C. & KÜHL, H.S. (2019) Validating camera trap distance sampling for chimpanzees. *American Journal of Primatology*, 81, e22962.
- CAPPELLE, N., HOWE, E.J., BOESCH, C. & KÜHL, H.S. (2021) Estimating animal abundance and effort–precision relationship with camera trap distance sampling. *Ecosphere*, 12, e03299.
- CARAVAGGI, A. (2017) *remBoot*: an R package for random encounter modelling. *Journal of Open Source Software*, 2, 176.
- CARAVAGGI, A. (2022) *remBoot: Random Encounter Modelling for Density Estimation and Variance*. [github.com/arcaravaggi/remBoot/blob/master/vignettes/remBoot.html](https://github.com/arcaravaggi/remBoot/blob/master/vignettes/remBoot.html) [accessed 10 April 2023].
- CARAVAGGI, A., ZACCARONI, M., RIGA, F., SCHAI-BRAUN, S.C., DICK, J.T.A., MONTGOMERY, W.I. & REID, N. (2016) An invasive–native mammalian species replacement process captured by camera trap survey random encounter models. *Remote Sensing in Ecology and Conservation*, 2, 45–58.
- CARUGATI, C. (1995) *Habitat, prey and area requirements of otters (Aonyx capensis and Lutra maculicollis) in the Natal Drakensberg*. MSc thesis. University of Natal, Pietermaritzburg, South Africa.
- CIANFRANI, C., BROENNIMANN, O., LOY, A. & GUISSAN, A. (2018) More than range exposure: global otter vulnerability to climate change. *Biological Conservation*, 221, 103–113.
- CORLATTI, L., SIVIERI, S., SUDOLSKA, B., GIACOMELLI, S. & PEDROTTI, L. (2020) A field test of unconventional camera trap distance sampling to estimate abundance of marmot populations. *Wildlife Biology*, 2020, 00652.
- CUSACK, J.J., SWANSON, A., COULSON, T., PACKER, C., CARBONE, C., DICKMAN, A.J. et al. (2015) Applying a random encounter model to estimate lion density from camera traps in Serengeti National Park, Tanzania. *Journal of Wildlife Management*, 79, 1014–1021.
- DELIBES-MATEOS, M., DÍAZ-RUIZ, F., CARO, J. & FERRERAS, P. (2014) Activity patterns of the vulnerable guinea (*Leopardus guigna*) and its main prey in the Valdivian rainforest of southern Chile. *Mammalian Biology*, 79, 393–397.
- DUPLAIX, N. & SAVAGE, M. (2018) *The Global Otter Conservation Strategy*. IUCN Species Survival Commission Otter Specialist Group, Salem, USA.
- DWS (2020) *South Africa 1:500 000 Rivers*. Department of Water and Sanitation, Government of South Africa, Pretoria, South Africa. [dws.gov.za/iwqs/gis\\_data/river/rivs500k.aspx](https://dws.gov.za/iwqs/gis_data/river/rivs500k.aspx) [accessed 10 September 2023].
- ENETWILD CONSORTIUM, PODGÓRSKI, T., ACEVEDO, P., APOLLONIO, M., BEREZOWSKA-CNOTA, T., BEVILACQUA, C. et al. (2020) Guidance on estimation of abundance and density of wild carnivore population: methods, challenges, possibilities. *EFSA Supporting Publication*, 17, 1947E.
- FANCOURT, B.A., HAWKINS, C.E., CAMERON, E.Z., JONES, M.E. & NICOL, S.C. (2015) Devil declines and catastrophic cascades: is mesopredator release of feral cats inhibiting recovery of the eastern quoll? *PLOS One*, 10, e0119303.
- FEWSTER, R.M., BUCKLAND, S.T., BURNHAM, K.P., BORCHERS, D.L., JUPP, P.E., LAAKE, J.L. & THOMAS, L. (2009) Estimating the encounter rate variance in distance sampling. *Biometrics*, 65, 225–236.
- FISHER, N.I. (1995) *Statistical Analysis of Circular Data*. Cambridge University Press, Cambridge, UK.
- GALLANT, D., VASSEUR, L. & BÉRUBÉ, C.H. (2007) Unveiling the limitations of scat surveys to monitor social species: a case study on river otters. *Journal of Wildlife Management*, 71, 258–265.
- GERBER, B.D., KARPANTY, S.M. & RANDRIANANTENAINA, J. (2012) Activity patterns of carnivores in the rain forests of Madagascar: implications for species coexistence. *Journal of Mammalogy*, 93, 667–676.
- GETTELMAN, T.E., NIELSEN, C.K., SCIMECA, J.M. & SCHAUBER, E.M. (2022) River otter chemical immobilization and field surgery using nonscheduled drugs. *Wildlife Society Bulletin*, 46, e1354.
- GIL-SÁNCHEZ, J.M. & ANTORÁN-PILAR, E. (2020) Camera-trapping for abundance estimation of otters in seasonal rivers: a field evaluation. *European Journal of Wildlife Research*, 66, 72.
- GILBERT, N.A., CLARE, J.D.J., STENGLIN, J.L. & ZUCKERBERG, B. (2020) Abundance estimation of unmarked animals based on camera-trap data. *Conservation Biology*, 35, 88–100.
- GOMEZ, H., WALLACE, R., AYALA, G. & TEJADA, R. (2005) Dry season activity periods of some Amazonian mammals. *Studies on Neotropical Fauna and Environment*, 40, 91–95.
- HÁJKOVÁ, P., ZEMANOVÁ, B., ROCHE, K. & HÁJEK, B. (2009) An evaluation of field and noninvasive genetic methods for estimating Eurasian otter population size. *Conservation Genetics*, 10, 1667–1681.
- HARRIS, G.M., BUTLER, M.J., STEWART, D.R., ROMINGER, E.M. & RUHL, C.Q. (2020) Accurate population estimation of Caprinae using camera traps and distance sampling. *Scientific Reports*, 10, 17729.
- HIBY, L., LOVELL, P., PATIL, N., KUMAR, N.S., GOPALASWAMY, A.M. & KARANTH, K.U. (2009) A tiger cannot change its stripes: using a three-dimensional model to match images of living tigers and tiger skins. *Biology Letters*, 5, 383–386.
- HOWE, E.J., BUCKLAND, S.T., DESPRÉS-EINSPENNER, M. & KÜHL, H.S. (2017) Distance sampling with camera traps. *Methods in Ecology and Evolution*, 8, 1558–1565.
- HOWE, E.J., BUCKLAND, S.T., DESPRÉS-EINSPENNER, M. & KÜHL, H.S. (2019) Model selection with overdispersed distance sampling data. *Methods in Ecology and Evolution*, 10, 38–47.
- IPBES (2019) *Global Assessment Report on Biodiversity and Ecosystem Services of the Intergovernmental Science-Policy Platform on Biodiversity and Ecosystem Services*. IPBES Secretariat, Bonn, Germany.
- JACQUES, H., REED-SMITH, J. & SOMERS, M.J. (2021) *Aonyx capensis*. In *The IUCN Red List of Threatened Species 2021*. [dx.doi.org/10.2305/IUCN.UK.2021-3.RLTS.T1793A164575819.en](https://dx.doi.org/10.2305/IUCN.UK.2021-3.RLTS.T1793A164575819.en).
- JORDAAN, R.K., MCINTYRE, T., SOMERS, M.J. & BESTER, M.N. (2015) An assessment of spatial and temporal variation in the diet of Cape clawless otters (*Aonyx capensis*) in marine environments. *African Journal of Wildlife Research*, 45, 342–353.

- JORDAAN, R.K., SOMERS, M.J., HALL, G. & MCINTYRE, T. (2019) Plasticity and specialisation in the isotopic niche of African clawless otters foraging in marine and freshwater habitats. *Mammalian Biology*, 98, 61–72.
- KRUUK, H. (2006) *Otters: Ecology, Behaviour and Conservation*. Oxford University Press, Oxford, UK.
- KRUUK, H. & CONROY, J.W.H. (1987) Surveying otter *Lutra lutra* populations: a discussion of problems with spraints. *Biological Conservation*, 41, 179–183.
- KRUUK, H. & GOUDSWAARD, P.C. (1990) Effects of changes in fish populations in Lake Victoria on the food of otters (*Lutra maculicollis* Schinz and *Aonyx capensis* Lichtenstein). *African Journal of Ecology*, 28, 322–329.
- KRUUK, H., CONROY, J.W.H., GLIMMERVEEN, U. & OUWERKERK, E.J. (1986) The use of spraints to survey populations of otters *Lutra lutra*. *Biological Conservation*, 35, 187–194.
- KUBHEKA, S.P., ROWE-ROWE, D.T., ALLETSON, J.D. & PERRIN, M.R. (2012) Possible influence of increased riparian activity (stream modification and agricultural intensification) on abundance of South African otters. *African Journal of Ecology*, 51, 288–294.
- MACE, G.M., COLLAR, N.J., GASTON, K.J., HILTON-TAYLOR, C., AKÇAKAYA, H.R., LEADER-WILLIAMS, N. et al. (2008) Quantification of extinction risk: IUCN's system for classifying threatened species. *Conservation Biology*, 22, 1424–1442.
- MAJELANTLE, T.L., MCINTYRE, T. & GANSWINDT, A. (2020) Monitoring the effects of land transformation on African clawless otters (*Aonyx capensis*) using fecal glucocorticoid metabolite concentrations as a measure of stress. *Integrative Zoology*, 15, 293–306.
- MAJELANTLE, T.L., GANSWINDT, A., JORDAAN, R.K., SLIP, D.J., HARCOURT, R. & MCINTYRE, T. (2021) Increased population density and behavioural flexibility of African clawless otters (*Aonyx capensis*) in specific anthropogenic environments. *Urban Ecosystems*, 24, 691–699.
- MANZO, E., BARTOLOMMEI, P., ROWCLIFFE, J.M. & COZZOLINO, R. (2012) Estimation of population density of European pine marten in central Italy using camera trapping. *Acta Theriologica*, 57, 165–172.
- MCINTYRE, T. & ROUX, F. (2024) Successful tracking of an African clawless otter (*Aonyx capensis*) via an externally attached telemetry device. *IUCN Otter Specialist Group Bulletin*, 41, 46–52.
- MCINTYRE, T., MAJELANTLE, T.L., SLIP, D.J. & HARCOURT, R.G. (2020) Quantifying imperfect camera-trap detection probabilities: implications for density modelling. *Wildlife Research*, 47, 177–185.
- MEREDITH, M., RIDOUT, M. & CAMPBELL, L. (2024) *overlap: Estimates of Coefficient of Overlapping for Animal Activity Patterns*. [CRAN.R-project.org/package=overlap](https://cran.r-project.org/package=overlap) [accessed July 2024].
- MILLER, D.L., REXSTAD, E., THOMAS, L., MARSHALL, L. & LAKE, J.L. (2019) Distance sampling in R. *Journal of Statistical Software*, 89, 1–28.
- MILLSPAUGH, J. & MARZLUFF, J.M. (2001) *Radio Tracking and Animal Populations*. Academic Press, San Diego, USA.
- MOWRY, R.A., GOMPPER, M.E., BERINGER, J. & EGGERT, L.S. (2011) River otter population size estimation using noninvasive latrine surveys. *Journal of Wildlife Management*, 75, 1625–1636.
- NEL, J.A.J. & SOMERS, M.J. (2007) Distribution and habitat choice of Cape clawless otters, *Aonyx capensis*, in South Africa. *South African Journal of Wildlife Research*, 37, 61–70.
- PALENCIA, P., ROWCLIFFE, J.M., VICENTE, J. & ACEVEDO, P. (2021) Assessing the camera trap methodologies used to estimate density of unmarked populations. *Journal of Applied Ecology*, 58, 1583–1592.
- PALENCIA MAYORDOMO, P. (2021) *Developing and harmonizing camera trap methods to estimate population density and movement parameters of unmarked populations: the random encounter model*. PhD thesis. The University of Castilla-La Mancha, Ciudad Real, Spain.
- PERRAL, C., LANDMAN, M. & KERLEY, G.I.H. (2022) The inappropriate use of time-to-independence biases estimates of activity patterns of free-ranging mammals derived from camera traps. *Ecology and Evolution*, 12, e9408.
- PERRIN, M.R. & CARUGATI, C. (2000) Habitat use by the Cape clawless otter and the spotted-necked otter in the KwaZulu-Natal Drakensberg, South Africa. *South African Journal of Wildlife Research*, 30, 103–113.
- PERRIN, M.R. & CARUGATI, C. (2006) Abundance estimates of the Cape clawless otter *Aonyx capensis* (Schinz 1821) and the spotted-necked otter *Lutra maculicollis* (Lichtenstein 1835) in the KwaZulu-Natal Drakensberg, South Africa. *Tropical Zoology*, 19, 9–19.
- PFEFFER, S.E., SPITZER, R., ALLEN, A.M., HOFMEESTER, T.R., ERICSSON, G., WIDEMO, F. et al. (2018) Pictures or pellets? Comparing camera trapping and dung counts as methods for estimating population densities of ungulates. *Remote Sensing in Ecology and Conservation*, 4, 173–183.
- PONSONBY, D.W., MADISHA, M.T., SCHWAIBOLD, U. & DALTON, D.L. (2019) Genetic diversity of African clawless otters (*Aonyx capensis*) occurring in urbanised areas of Gauteng, South Africa. *South African Journal of Science*, 115, 4889.
- R CORE TEAM (2023) *R: A Language and Environment for Statistical Computing*. R Foundation for Statistical Computing, Vienna, Austria. [R-project.org](https://www.R-project.org) [accessed 15 April 2023].
- RIDOUT, M. & LINKIE, M. (2009) Estimating overlap of daily activity patterns from camera trap data. *Journal of Agricultural Biological and Environmental Statistics*, 14, 322–337.
- ROWCLIFFE, J.M. (2022) *activity: Animal Activity Statistics*. [CRAN.R-project.org/package=activity](https://cran.r-project.org/package=activity) [accessed 23 May 2023].
- ROWCLIFFE, J.M., FIELD, J., TURVEY, S.T. & CARBONE, C. (2008) Estimating animal density using camera traps without the need for individual recognition. *Journal of Applied Ecology*, 45, 1228–1236.
- ROWCLIFFE, J.M., CARBONE, C., JANSEN, P.A., KAYS, R. & KRANSTAUBER, B. (2011) Quantifying the sensitivity of camera traps: an adapted distance sampling approach. *Methods in Ecology and Evolution*, 2, 464–476.
- ROWCLIFFE, J.M., KAYS, R., CARBONE, C. & JANSEN, P.A. (2013) Clarifying assumptions behind the estimation of animal density from camera trap rates. *Journal of Wildlife Management*, 77, 876.
- ROWCLIFFE, J.M., KAYS, R., KRANSTAUBER, B., CARBONE, C. & JANSEN, P.A. (2014) Quantifying levels of animal activity using camera trap data. *Methods in Ecology and Evolution*, 5, 1170–1179.
- ROWE-ROWE, D.T. (1992) Survey of South African otters in a freshwater habitat, using sign. *South African Journal of Wildlife Research*, 22, 49–55.
- ROWE-ROWE, D.T. (2016) Densities of otters in the Drakensberg of KwaZulu-Natal, South Africa. *IUCN Otter Specialist Group Bulletin*, 33, 64–67.
- SADLIER, L.M.J., WEBBON, C.C., BAKER, P.J. & HARRIS, S. (2004) Methods of monitoring red foxes *Vulpes vulpes* and badgers *Meles meles*: are field signs the answer? *Mammal Review*, 34, 75–98.
- SANBI (2018) *The Vegetation Map of South Africa, Lesotho and Swaziland*. Mucina, L., Rutherford, M.C. & Powrie, L.W. (eds). [bgis.sanbi.org/Projects/Detail/186](https://bgis.sanbi.org/Projects/Detail/186) [accessed 29 September 2023].
- SOMERS, M.J. (2000) Foraging behaviour of Cape clawless otters (*Aonyx capensis*) in a marine habitat. *Journal of Zoology*, 252, 473–480.
- SOMERS, M.J. (2001) *Habitat utilization of Cape clawless otters (Aonyx capensis)*. PhD thesis. University of Stellenbosch, Stellenbosch, South Africa.

- SOMERS, M.J. & NEL, J.A.J. (2004a) Habitat selection by the Cape clawless otter (*Aonyx capensis*) in rivers in the Western Cape Province, South Africa. *African Journal of Ecology*, 42, 298–305.
- SOMERS, M.J. & NEL, J.A.J. (2004b) Movement patterns and home range of Cape clawless otters (*Aonyx capensis*), affected by high food density patches. *Journal of Zoology*, 262, 91–98.
- SOMERS, M.J. & NEL, J.A.J. (2013) *Aonyx capensis*. In *Mammals of Africa*, pp. 103–108. Bloomsbury Publishing, London, UK.
- SOMERS, M.J. & PURVES, M.G. (1996) Trophic overlap between three syntopic semi-aquatic carnivores: Cape clawless otter, spotted-necked otter and water mongoose. *African Journal of Ecology*, 34, 158–166.
- STANDER, P.E. (1998) Spoor counts as indices of large carnivore populations: the relationship between spoor frequency, sampling effort and true density. *Journal of Applied Ecology*, 35, 378–385.
- TRAILCAMPRO (2020) *Spypoint Solar-Dark*. [trailcampro.com/products/spy-point-solar-dark](https://trailcampro.com/products/spy-point-solar-dark) [accessed 26 April 2023].
- VAN NIEKERK, C.H., SOMERS, M.J. & NEL, J.A.J. (1998) Freshwater availability and distribution of Cape clawless otter spraints and resting places along the south-west coast of South Africa. *South African Journal of Wildlife Research*, 28, 68–72.
- VERWOERD, D.J. (1987) Observations on the food and status of the Cape clawless otter *Aonyx capensis* at Betty's Bay, South Africa. *South African Journal of Zoology*, 22, 33–39.
- WEARN, O.R. & GLOVER-KAPFER, P. (2017) *Camera-Trapping for Conservation: A Guide to Best-Practices*. WWF-UK, Woking, UK. [www.wwf.org.uk/sites/default/files/2019-04/CameraTraps-WWF-guidelines.pdf](https://www.wwf.org.uk/sites/default/files/2019-04/CameraTraps-WWF-guidelines.pdf) [accessed July 2024].
- WEARN, O.R., BELL, T.E.M., BOLITHO, A., DURRANT, J., HAYSOM, J.K., NIJHAWAN, S. et al. (2022) Estimating animal density for a community of species using information obtained only from camera-traps. *Methods in Ecology and Evolution*, 13, 2248–2261.
- WWF & TNC (2008) Freshwater major habitat types. Unpublished digital media modified from Abell et al. (2008) Freshwater ecoregions of the world: a new map of biogeographic units for freshwater biodiversity conservation. *BioScience*, 58, 403–414. WWF, Gland, Switzerland, and The Nature Conservancy, Arlington, USA. [feow.org](https://www.feow.org) [accessed February 2025].
- YOXON, P. & YOXON, K. (2014) Estimating otter numbers using spraints: is it possible? *Journal of Marine Biology*, 2014, 430683.
- ZERO, V.H., SUNDARESAN, S.R., O'BRIEN, T.G. & KINNAIRD, M.F. (2013) Monitoring an Endangered savannah ungulate, Grevy's zebra *Equus grevyi*: choosing a method for estimating population densities. *Oryx*, 47, 410–419.