

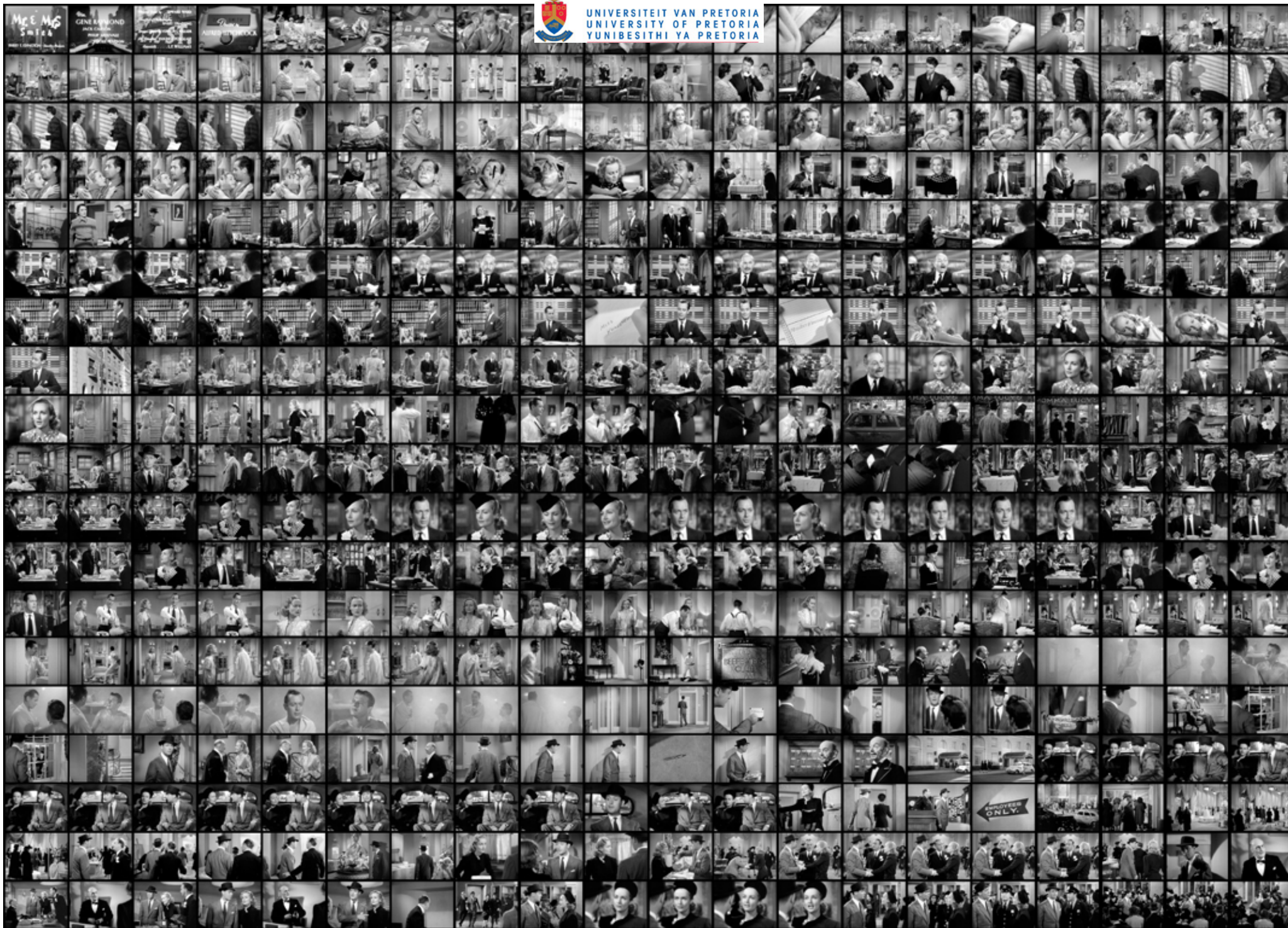
UNIVERSITY OF PRETORIA: school of motion picture production

Traditional film is made up of a series of **individual images** called frames. When these images are shown in rapid **succession** a viewer has the illusion that **motion** is occurring.





UNIVERSITEIT VAN PRETORIA
UNIVERSITY OF PRETORIA
YUNIBESITHI YA PRETORIA



Nadine Engelbrecht

**Studyleader: M Viljoen
Course coordinator: Prof K Bakker**

**Submitted in fulfilment of part of the requirements for the degree
Magister in Architecture [Professional] in the Faculty of Engineering,
Built Environment and Information Technology, University of Pretoria.
2008**

list of figures	2	design development: conceptual exploration	65
abstract	7		<ul style="list-style-type: none"> _proposed campus framework _proposed site framework _building form development _experience _movement _transparency _interactivity
background	11		
<ul style="list-style-type: none"> _problem statement _objective _research questions _dissertation topic _choice of site _design motivation _client_user profile _funding 		technical investigation	89
			<ul style="list-style-type: none"> _tectonic and stereotomic elements _building systems _acoustics _proposed materials _technology
context: analysis + synthesis	23		
<ul style="list-style-type: none"> _history of South Campus _macro scale: city wide _meso scale: study area _micro scale: site _contextual influences 		conclusion	125
		references	129
design intention: theory	43	appendix	135
			<ul style="list-style-type: none"> _appendix a: proposed Bus Rapid Transport route _appendix b: group framework _appendix c: natural daylight calculations _appendix d: water harvesting calculations _appendix e: acoustic absorption calculations _appendix f: traffic noise calculations _appendix g: acoustic isolation calculations
design approach	53	technical drawings	157
<ul style="list-style-type: none"> _building programme _proposed campus design guidelines _site principles _proposed building guidelines _programmatic influences 			

- Figure 1: Alfred Hitchcock's *Mr. and Mrs. Smith*, 1941 (<http://www.hitchcockwiki.com>).
- Figure 2: Photograph of man with scarf (<http://thesartorialist.blogspot.com>).
- Figure 3: Porter on Mount Kilimanjaro (Author).
- Figure 4: Diagrammatic representation of the research process (Author).
- Figure 5: Photograph of woman with camera (<http://thesartorialist.blogspot.com>).
- Figure 6: Perspective view of the Hatfield Campus (Author).
- Figure 7: Lynnwood Road (Author).
- Figure 8: Figure ground indicating the primary uses on campus (Author).
- Figure 9: Movement between anchors (Author).
- Figure 10: Stitches across Lynnwood Road (Author).
- Figure 11: Sketch of a sound stage (Author).
- Figure 12: Man with big glasses (<http://www.artthrob.co.za>).
- Figure 13: Site location (Author).
- Figure 14: Junction of Lynnwood and University Roads (Author).
- Figure 15: Panorama of the University of Pretoria and Lynnwood Road crossing, viewed from the north-western corner (Author).
- Figure 16: Film activity in South Africa (Gauteng Film Commission, 2007:103).
- Figure 17: Cinema attendance in South Africa (Gauteng Film Commission, 2007:150).
- Figure 18: Photograph of students (Author).
- Figure 19: Photograph of camera man (Author).
- Figure 20: Photograph of lady (<http://www.artthrob.co.za>).
- Figure 21: Photograph of film student (Author).
- Figure 22: National Film and Video Foundation logo (National Film and Video Foundation, n.d).
- Figure 23: Gauteng Film Commission logo (Gauteng Film Commission, 2007:1).
- Figure 24: *Bunny Chow*, an independently funded local movie (www.bunnychowmovie.co.za).
- Figure 25: South African student film *Elalini* won the Oscar for the best foreign film (<http://www.elalini.co.za>).
- Figure 26: Photograph of woman with umbrella (<http://thesartorialist.blogspot.com>).
- Figure 27: Map of Pretoria, 1889 (Oerder & van Dooren, 1889).
- Figure 28: Map of Pretoria, 1900 (Lundewall & van der Ben, n.d.).
- Figure 29: First buildings of the Fuel Research Institute completed in 1933 (CSIR, 1980:22).
- Figure 30: Aerial photograph, 1939 (Pretoria Boys' High School Archives, n.d.).
- Figure 31: Fuel Research Institute, 1957 (Fuel Research Institute, 1957:1).
- Figure 32: Aerial view of the south-west corner of the University Campus, 1967 (University of Pretoria, n.d.).
- Figure 33: Fuel Research Institute, 1980 (CSIR, 1980:3).
- Figure 34: Aerial view of the University Campus, 1989 (University of Pretoria, n.d.).
- Figure 35: Historic value comparison between the buildings on South Campus (Author).
- Figure 36: Heritage buildings and traces of history (Author).
- Figure 37: Sketch of the interior of the existing building (Author).
- Figure 38: Interior spaces and volumes of existing buildings (Author).
- Figure 39: Existing building interior (Author).
- Figure 40: Woman with scarf and dress (<http://thesartorialist.blogspot.com>).
- Figure 41: Figure ground of Tshwane (Author).
- Figure 42: Diagram of Tshwane activity nodes (Author).
- Figure 43: Figure ground of the University of Pretoria and surrounding areas (Author).
- Figure 44: Film crew (<http://thesartorialist.blogspot.com>).
- Figure 45: Surrounding land uses (Author).
- Figure 46: Transport diagram (Author).
- Figure 47: Train station in University Road (Author).
- Figure 48: Bus stop in Lynnwood Road (Author).
- Figure 49: Pedestrian movement analysis (Author).
- Figure 50: Vehicular movement analysis (Author).
- Figure 51: Social study legend (Author).
- Figure 52: Detailed site analysis (Author).
- Figure 53: Social study of South Campus (Author).
- Figure 54: Visual sequence showing progression from Main Campus through South Campus (Author).
- Figure 55: Average temperatures in Pretoria (South African Weather Service, n.d).
- Figure 56: Average rainfall in Pretoria (South African Weather Service, n.d).
- Figure 57: Sun angles for Pretoria (Napier, 2000:4.7-4.4.10).
- Figure 58: Pretoria wind rose (South African Weather Service, n.d).
- Figure 59: Shadow patterns on South Campus (Author).
- Figure 60: Site analysis diagram (Author).
- Figure 61: Sketch of historic building on South Campus (Author).
- Figure 62: Figure ground indicating buildings of related use (Author).

- Figure 63: Site location and existing power plant (<http://www.reichen-robot.fr>).
- Figure 64: Proposed façade of renovated building (<http://www.reichen-robot.fr>).
- Figure 65: Proposed Cinema City (Jodidio, 2005:439).
- Figure 66: Cross section showing re-used industrial spaces (<http://www.reichen-robot.fr>).
- Figure 67: Ancient versus modern (Preserve the Modern, 2007).
- Figure 68: Place de la Maison Carrée, a public square (Foster & Partners, n.d.).
- Figure 69: Response to context (<http://studio2006taylors.com>).
- Figure 70: Cross section showing building height in relation to context (Foster & Partners, n.d.).
- Figure 71: Photograph of man with skateboard (<http://thesartorialist.blogspot.com>).
- Figure 72: *The chronicles of Narnia* (Walt Disney Pictures).
- Figure 73: Storyboard (Author).
- Figure 74: Tschumi's Parc de la Villette, Cinematic Promenade (Tschumi, 1987:8).
- Figure 75: Theory diagrams (Author).
- Figure 76: Alfred Hitchcock's *Young and Innocent*, 1937 (<http://www.hitchcockwiki.com>).
- Figure 77: Tschumi's Manhattan Transcripts, The Park (Tschumi, 1994:17-18).
- Figure 78: Diagrammatic representation of Tuan's definition of experience (Tuan, 1977:8).
- Figure 79: Diagrammatic representation of Pallasmaa's definition of experience (Author).
- Figure 80: Quote by Walter Benjamin (Benjamin, 1968:238).
- Figure 81: Movie images (McCarthy, 2007:49).
- Figure 82: VW Transparent Factory (<http://forums.vwvortex.com>).
- Figure 83: Factory located in the city centre (<http://www.henn.com>).
- Figure 84: Physical transparency and transparency of process (<http://www.henn.com>).
- Figure 85: Manhattan context of the 100 11th Ave Residences (<http://wirednewyork.com>).
- Figure 86: Glass curtain wall on south façade (100 11th Ave Residences, n.d.).
- Figure 87: Communal spaces along the north façade (100 11th Ave Residences, n.d.).
- Figure 88: Tilted window frames (100 11th Ave Residences, n.d.).
- Figure 89: Views from within (100 11th Ave Residences, n.d.).
- Figure 90: Photograph of man with magazine (<http://thesartorialist.blogspot.com>).
- Figure 91: Producer's lab, LA Film School (<http://www.lafilm.com>).
- Figure 92: Production design studio, LA Film School (<http://www.lafilm.com>).
- Figure 93: Make-up and costume, Newtown City Varsity (Author).
- Figure 94: Sound stage, WITS, LA Film School (Author).
- Figure 95: Special effects studio, LA Film School, AFDA (<http://www.lafilm.com>, Author).
- Figure 96: Set building studio, WITS, LA Film School (Author, <http://www.lafilm.com>).
- Figure 97: Editing lab, Newtown City Varsity, The Video Lab (Author).
- Figure 98: Sound recording and voice booth, AFDA (Author).
- Figure 99: Audio editing, LA Film School (<http://www.lafilm.com>).
- Figure 100: Dubbing stage, LA Film School (<http://www.lafilm.com>).
- Figure 101: Server room and equipment store, The Video Lab, LA Film School (Author, <http://www.lafilm.com>).
- Figure 102: Lecture room, AFDA (Author).
- Figure 103: Screening theatre, LA Film School (<http://www.lafilm.com>).
- Figure 104: Camera man (Author).
- Figure 105: Diagrams of campus design guidelines (Author).
- Figure 106: Diagrams of site principles (Author).
- Figure 107: North elevation along Lynnwood Road (Author).
- Figure 108: Historic red brick buildings (Author).
- Figure 109: Study of the proportions of the existing building (Author).
- Figure 110: *Pirates of the Caribbean: Curse of the Black Pearl*, 2003 (Walt Disney Pictures).
- Figure 111: Computer Generated face of Davy Jones, *Pirates of the Caribbean: Dead Man's Chest*, 2006 (Walt Disney Pictures).
- Figure 112: Cinematheque Quebecoise (Carter, 1998:74).
- Figure 113: Section (Author, edited from Carter, 1998:76).
- Figure 114: Ground floor plan (Author, edited from Carter, 1998:76).
- Figure 115: First floor plan (Author, edited from Carter, 1998:76).
- Figure 116: AFDA photographs (Author).
- Figure 117: AFDA ground floor plan (Author).
- Figure 118: Photograph of woman on cell phone (<http://thesartorialist.blogspot.com>).
- Figure 119: Conceptual site model, June 2008 (Author).
- Figure 120: Proposed framework plan (Author).
- Figure 121: Perspective view of the existing site (Author).
- Figure 122: Perspective view of the edge design (Author).
- Figure 123: Plan concept sketch of the length of the building, May 2008 (Author).

- Figure 124: Perspective view of the length of the building (Author).
- Figure 125: Conceptual design of the building façade (Author).
- Figure 126: Perspective view of the final façade concept (Author).
- Figure 127: Plan concept sketch of the façade development, June 2008 (Author).
- Figure 128: Conceptual design for permeability (Author).
- Figure 129: Perspective view of the final entrance concept (Author).
- Figure 130: Concept model, June 2008 (Author).
- Figure 131: Walkway along the street edge (<http://www.oma.nl>).
- Figure 132: Seattle Public Library (Jodidio, 2006:335).
- Figure 133: Concept sketch, March 2008 (Author).
- Figure 134: Proposed perspective view of the slanted wall on the northern façade (Author).
- Figure 135: Holiday Home (Jodidio, 2007:345).
- Figure 136: Acoustic fibreglass fabric (Prolith Africa, n.d.).
- Figure 137: NYU Department of Philosophy (<http://www.stevenholl.com>).
- Figure 138: Proposed cinema perspective illustrating the multiple projection possibilities (Author).
- Figure 139: Proposed floor plans illustrating internal circulation patterns (Author).
- Figure 140: Building occupation time sheet (Author).
- Figure 141: Visitors circulation: ground floor (Author).
- Figure 142: Students circulation: ground floor (Author).
- Figure 143: Students circulation: first floor (Author).
- Figure 144: Concept sketch of viewing windows into lecture rooms, April 2008 (Author).
- Figure 145: Suspended cinema of the Cinematheque Quebecoise (Carter, 1998:75).
- Figure 146: Open lecture room of the Seattle Public Library (Jodidio, 2006:338).
- Figure 147: Concept sketch of framed views, April 2008 (Author).
- Figure 148: Baragwanath Transport Facility (Ross, 2008:208).
- Figure 149: Concept sketch of city view, March 2008 (Author).
- Figure 150: Notre Dame du Haut (www.bc.edu/bc_org/avp/cas/fnart/Corbu/ronchamp5.jpg).
- Figure 151: Sarphatistraat Offices (<http://www.stevenholl.com>).
- Figure 152: Sarphatistraat Offices: interior (<http://www.stevenholl.com>).
- Figure 153: Sarphatistraat Offices: night view (<http://www.stevenholl.com>).
- Figure 154: Concept model of proposed building's east elevation, June 2008 (Author).
- Figure 155: Proposed perspective view from the south-east (Author).
- Figure 156: Concept model of the building skin, June 2008 (Author).
- Figure 157: Concept elevation of the north façade, April 2008 (Author).
- Figure 158: Proposed perspective view from the north-west (Author).
- Figure 159: Crown Fountain (www.wikipedia.com).
- Figure 160: Moscone Convention Centre (<http://www.dillerscofidio.com>).
- Figure 161: Proposed perspective showing digital displays located in building walkways (Author).
- Figure 162: Photograph of man with tattoo (<http://thesartorialist.blogspot.com>).
- Figure 163: Structural model of the proposed building (Author).
- Figure 164: Structural model of the lecture room (Author).
- Figure 165: Structural model of the steel roof assembly (Author).
- Figure 166: Structural model of the concrete frame (Author).
- Figure 167: Structural model of the floor slabs (Author).
- Figure 168: Structural model (Author).
- Figure 169: Eawag Forum Chriesbach (Wentz, 2007:42).
- Figure 170: Fire escape (Wentz, 2007:10).
- Figure 171: Louvre façade (Wentz, 2007:1).
- Figure 172: Louvres rotate according to the angle of the sun (Wentz, 2007:41).
- Figure 173: Installation of ETFE panels (<http://www.chinadaily.com>).
- Figure 174: Water Cube façade prototype (<http://inhabitat.com/wp-content/uploads/watercubebubbledetail.jpg>).
- Figure 175: Water Cube (<http://www.ptw.com.au>).
- Figure 176: Broadfield House Glass Museum (Richards, 2006:67).
- Figure 177: Green vertical louvres (Colt Germany, 2008).
- Figure 178: Commerzbank (Colt Germany, 2008).
- Figure 179: Colt processor (Gardner, 2008).
- Figure 180: Colt Carrier System 5, horizontal and vertical application possible (Gardner, 2008).
- Figure 181: Evaporative cooling unit (<http://www.wikipedia.com>).
- Figure 182: Whirlybird ventilator (<http://www.cousinssteel.co.za>).
- Figure 183: Proposed ventilation strategy during summer (Author).
- Figure 184: Hot water radiator (<http://www.walneyuk.com>).
- Figure 185: Solar water heater (<http://www.solarheat.co.za>).
- Figure 186: Proposed heating strategy during winter (Author).
- Figure 187: Velocity Films (Author).

- Figure 188: Internal light shelf (Author).
- Figure 189: Kiasma Museum of Contemporary Art (Richards, 2006:42).
- Figure 190: Kunsthaus Bregenz (Richards, 2006:24).
- Figure 191: Nanogel® used in glass roof (Cabot Corp, 2008).
- Figure 192: Nanogel® particles (Cabot Corp, 2008).
- Figure 193: Comparison between Nanogel® and other insulating products (Cabot Corp, 2008).
- Figure 194: Nanogel® thickness vs solar gain (Cabot Corp, 2008).
- Figure 195: Light shaft perspective, May 2008 (Author).
- Figure 196: Concept sketch of a sky view, April 2008 (Author).
- Figure 197: Sketch illustrating water harvesting (Author).
- Figure 198: Proposed hydrology system (Author).
- Figure 199: Networked sidewalk storm water system, Portland Bureau of Environmental Services (Margolis & Robinson, 2007:21).
- Figure 200: Sequence of infiltration trenches forms part of the streetscape (Margolis & Robinson, 2007:20).
- Figure 201: Green Green Screen (Gaventa, 2006:172).
- Figure 202: Musée du Quai Branly (<http://www.jeannouvel.com>).
- Figure 203: Detail of vertical garden (Photographs by Michelle Kotze).
- Figure 204: Mellosorber acoustic panels (<http://www.acousticpanels.co.za>).
- Figure 205: Sound absorption and reflection in lecture room (Author).
- Figure 206: Rauvolet Acoustic Line (Rehau, 2007).
- Figure 207: Section through voice booth walls (Author).
- Figure 208: Section through double pane windows (Egan, 1988:224).
- Figure 209: Section through voice booth floor (Author).
- Figure 210: Section through voice booth ceiling (Author).
- Figure 211: Section through cinema ceiling (Author).
- Figure 212: Section through cinema walls (Author).
- Figure 213: Force Shield roller shutter (Rollashield, n.d.).
- Figure 214: Crematorium Berlin, Axel Schultes Architekten (Peck, 2006:97).
- Figure 215: Parish Centre, Thalmassing, Meck Architekten (Peck, 2006:82).
- Figure 216: Fair-faced concrete (Peck, 2006:89).
- Figure 217: Red brick (Author).
- Figure 218: "Vastraplaat" (Herzog, Krippner & Lang, 2004:164).
- Figure 219: Ribbed sheet metal (Herzog, Krippner & Lang, 2004:164).
- Figure 220: Glass louvres design (Wentz, 2007:10).
- Figure 221: Transparent dot pattern of the blue film (Author).
- Figure 222: Glass balustrade design (Author).
- Figure 223: HaloPro™ in exhibitions (Pronova, n.d.).
- Figure 224: HaloPro™ on a building façade (Gatehouse Design, 2008).
- Figure 225: HaloPro™ with interactive software (Pronova, n.d.).
- Figure 226: HaloPro™ specifications (Pronova, n.d.).
- Figure 227: Deutsche Forschungsgemeinschaft (Pronova, n.d.).
- Figure 228: Deutsche Forschungsgemeinschaft (Ritter, 2007:36).
- Figure 229: Eyestep (<http://www.eyeclick.com>).
- Figure 230: iSurface™ (Mindstorm, 2007).
- Figure 231: Eyestep interactive floor (<http://www.eyeclick.com>).
- Figure 232: iWall™ (Mindstorm, 2007).
- Figure 233: Floor projection specifications (Luminvision, 2007).
- Figure 234: Sketches (Author).
- Figure 235: Brooklyn Mall floor, interactive fish pond (Author).
- Figure 236: Brooklyn Mall ceiling (Author).
- Figure 237: A & E Billboard (Holosonic Research Labs, 2002).
- Figure 238: Directed sound (Holosonic Research Labs, 2002).
- Figure 239: Audio Spotlight® system (Holosonic Research Labs, 2002).
- Figure 240: Audio Spotlight® specifications (Holosonic Research Labs, 2002).
- Figure 241: Photograph of woman in hat (<http://thesartorialist.blogspot.com>).
- Figure 242: Proposed perspective view of the internal courtyard (Author).
- Figure 243: Photograph of woman leaning against a wall (<http://thesartorialist.blogspot.com>).
- Figure 244: Photograph of woman dancing (<http://thesartorialist.blogspot.com>).
- Figure 245: Newspaper article indicating proposed BRT route (Claasen, 2008:9).
- Figure 246: Aerial photograph of Hatfield indicating the group framework proposal (Graduate class, 2008).
- Figure 247: Natural daylight calculations, ground floor (Author).
- Figure 248: Natural daylight calculations, first floor (Author).
- Figure 249: Natural daylight calculations, second floor (Author).
- Figure 250: Water storage capacity diagram, roof water only (Author).
- Figure 251: Water storage capacity diagram, roof water and wetland (Author).
- Figure 252: Man with cape (<http://thesartorialist.blogspot.com>).

abstract





“Architecture exists, like cinema, in the dimension of time and movement. One conceives and reads a building in terms of sequences. To erect a building is to predict and seek effects of contrast and linkage through which one passes... In the continuous shot/ sequence that a building is, the architect works with cuts and edits, framings and openings.”

Jean Nouvel (Rattenbury, 1994:35)

Figure 3

The film and media industries are rapidly evolving due to advances in digital technology. The process of film-making has changed up to a point where there is no physical film involved, and where it has been replaced by digital production, distribution and projection.

An investigation of the South Campus of the University of Pretoria revealed unutilized space isolated from the Main Campus. The dissertation explores opportunities for reclaiming existing structures and investigates the historical heritage of the site.

The growing interest in film making in South Africa generates a desire for an environment where South African film can be developed and promoted to domestic and international audiences.

The chosen function of the dissertation is a school for motion picture production, which combines education and entertainment on campus. Film activities on the north-western border of the South Campus have the potential of creating a pedestrian magnet to bridge the gap between the two campuses.

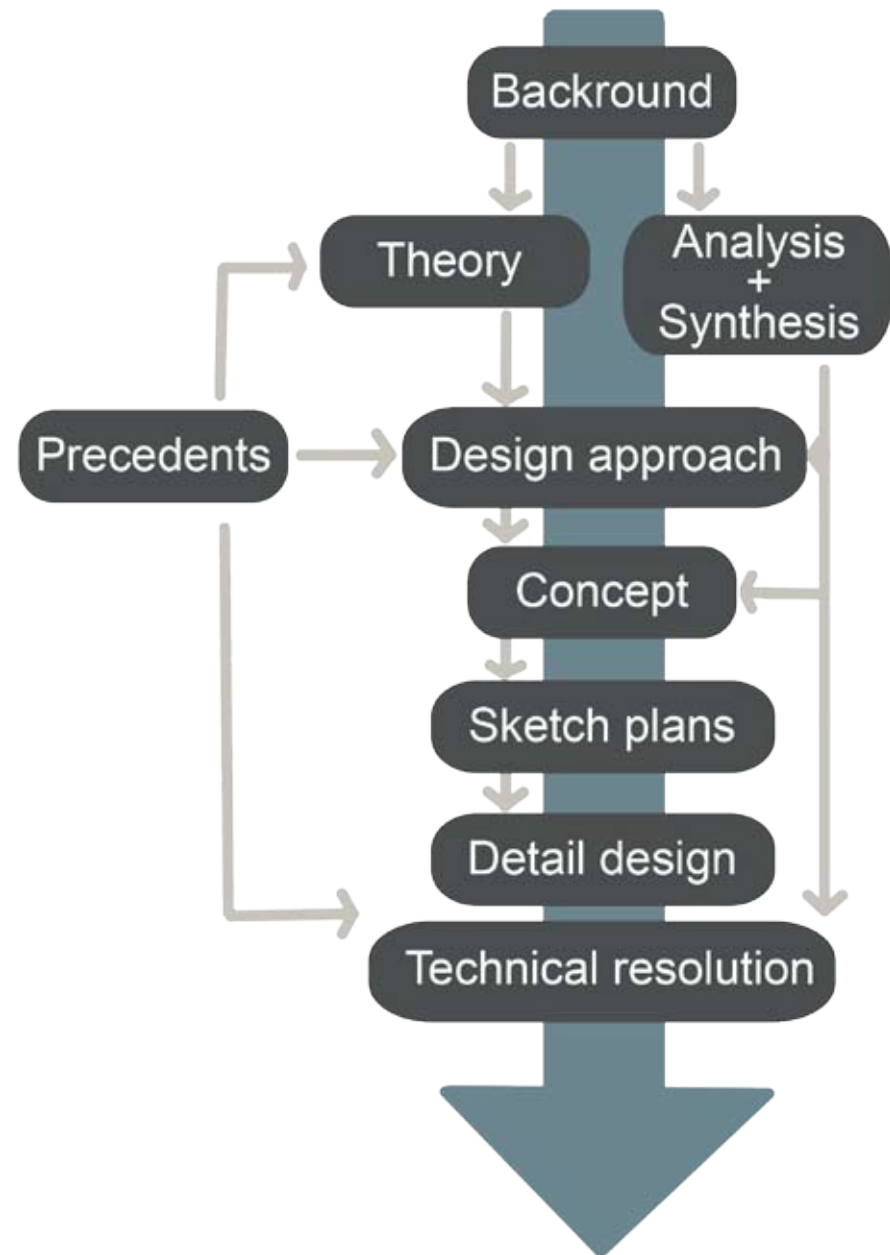


Figure 4: Diagrammatic representation of the research process.