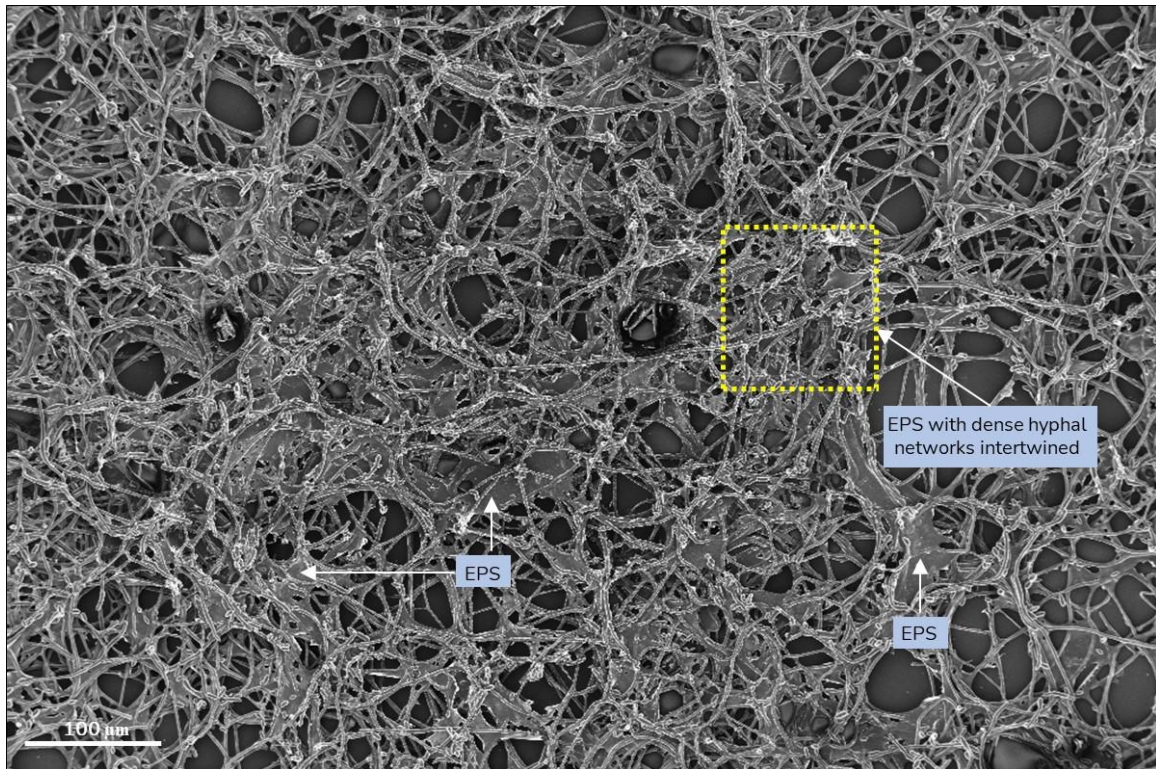
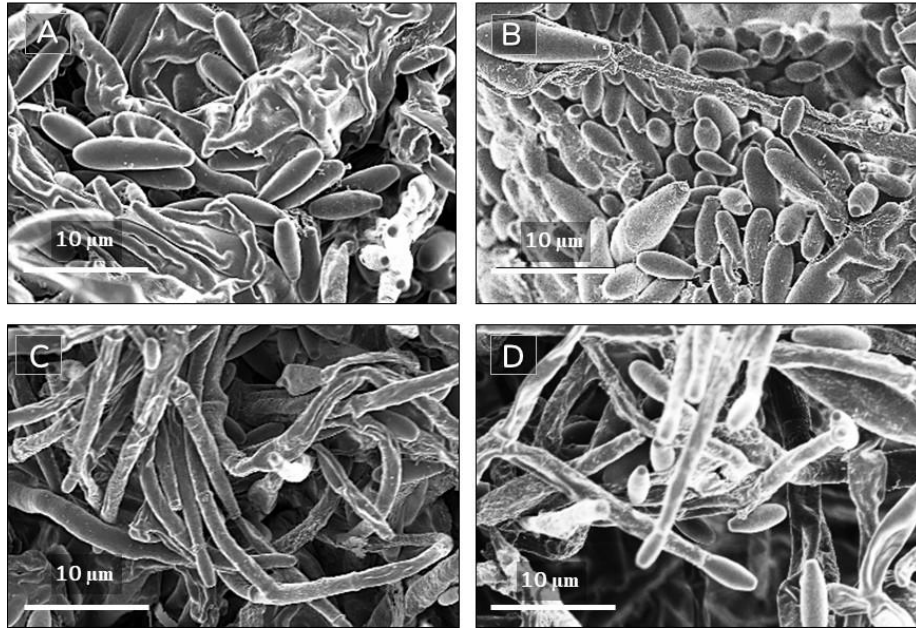


1 **2. Supplementary figures**



3 **Figure S1:** *Fusarium verticillioides* biofilms cultured for 7 days at 25 °C under
4 stationary conditions. The extracellular polymeric substances (EPS, indicated by white
5 arrows) appear to fill the spaces between hyphal cells, forming a highly organized
6 network that strengthens a biofilm.

7



8

9 **Figure S2:** *Fusarium verticillioides* planktonic cells (**A:** Conidia; **C:** Hyphae) and
10 biofilm-derived cells (**B:** Conidia; **D:** Hyphae). The cells were plated at the same
11 concentration (1×10^5 cells/ml) on $\frac{1}{4}$ PDA and incubated at 25 °C.

12