



Eco-Systemic **AWARENESS**

Submitted by
shawn brendan hopkins.
University Pretoria

Study Mentor
Dr. Gwen Breedlove

Submitted in partial fulfillment of the
requirements for the degree of
Magister in Architecture (Professional)
In the Faculty of Engineering, Built Environment
and Information Technology

University of Pretoria
Department of Architecture

November 2003

CONTENTS

Summary [English]		vi
List of figures	x	
List of tables	xi	
List of appendices	xi	
Stage A.1		
Preface	002	Eco-systemic awareness
Theory	006	
stage A.2		
Client	026	Profile
	029	Interested and affected parties
Stage B.1		
Context	030	Eco-systemic awareness
B.1.1	032	Introduction
B.2.1	034	The form of South African cities
B.2.2	035	The form of Pretoria
B.3.1	036	Pretoria city shape
B.3.2	037	Vision for Pretoia
B.4.1	038	Introduction to Pretoria-West
B.4.2	039	Pretoria-West contextual relationship
B.4.3	040	Historical development
B.4.4	042	Pretoria-West in the sub-metropolitan context
B.4.5	044	Pretoria-West major infrastructure
B.4.6	046	Pretoria-West social structure
B.4.7	048	Pretoria-West commercial structure
B.4.8	050	Pretoria-West Residential structure
B.4.9	052	Pretoria-West Movement structure
B.5.1	054	Location of selected precinct site
B.5.2	057	Historic analysis of site
B.5.3	058	Site surrounding movement patterns

B.5.4	059	Topography
B.5.5	060	Precinct zonong
B.5.6	061	Precinct Geology
B.5.7	062	Precinct climate

Stage C.1

Precedents		
C.1.1	067	Creative curitiba
C.1.2	069	Tate modern
C.2.3	070	SAB visitors centre
C.1.4	071	The autonomous house
C.1.5	073	TUKS HPC
C.1.6	074	Megawatt park

Stage C.2

Spatial Framework		
C.2.1	077	Introduction
C.2.2	078	Theoretical approach
C.2.3	079	Conceptual regional links
C.2.4	080	Conceptual city links
C.2.5	081	Precinct spatial concepts
C.2.6	082	Site concept

Stage D.1

Baseline / technical		
D.1.1	88	Introduction

Stage D.2

Historic analysis	91
-------------------	----

Stage D.3

Baseline criteria	93
-------------------	----

Stage D.4

Social issues	94
---------------	----

Stage D.5

Economic issues	102
-----------------	-----

Stage D.6

Environmental issues	107
----------------------	-----

Stage D.7

Project Cost analysis	126
-----------------------	-----

Stage D.8

Project Risk analysis	132
-----------------------	-----

Stage D.9

Technical Documentation	140
--------------------------------	-----

[LIST OF DRAWINGS]

Stage D.10

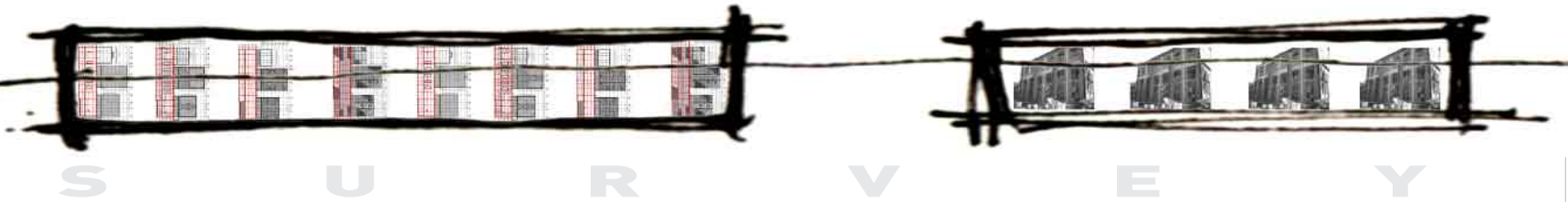
List of Sources	155
-----------------	-----

THE PROJECT OBJECTIVE

The project aims to create a general awareness of our personal impact on our planet, while meeting the value-based requirements of the client.

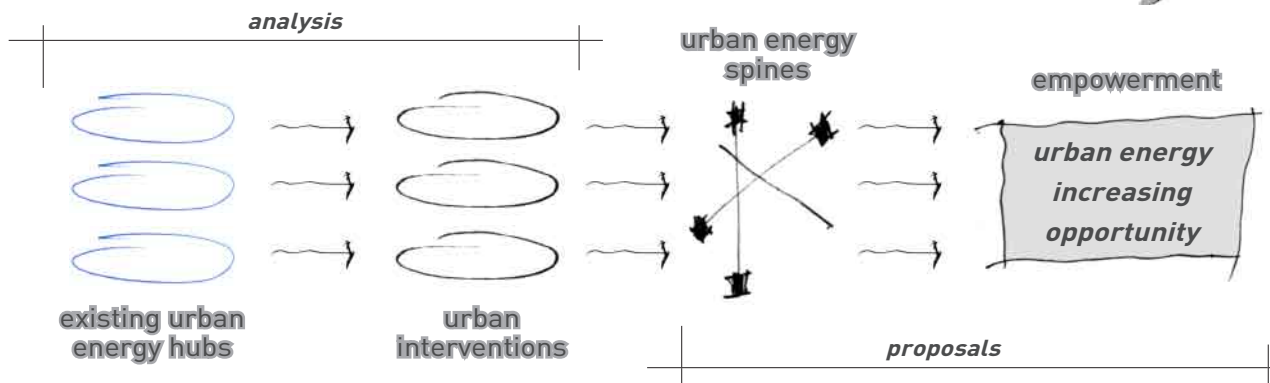
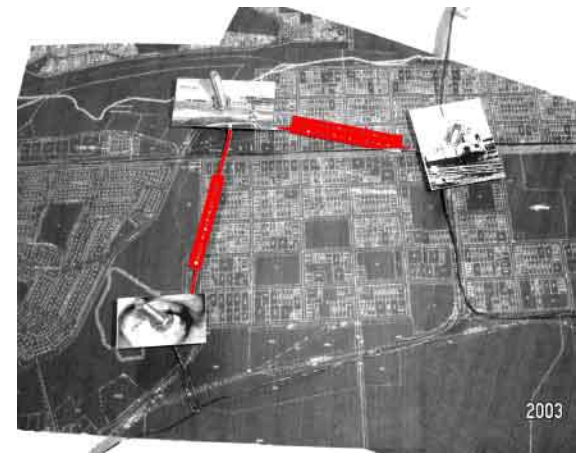
THE CHALLENGE

Working within an existing context and land use creates the challenge of integrating a sustainable design proposal into this context which is preconceived as being less desirable.



URBAN PROCESS

Energy has been conceptualised within the proposed urban framework. This energy goes beyond just proposing urban activity hubs and explores the energy within the *connection lines* between these hubs.



THE CLIENT REQUIREMENTS

Eskom requires a value based conference facility within the selected culturally significant structures of the Pretoria-West power station.

CONTEXTUAL RESPONSE

An analysis of the existing buildings on the selected site and its surrounding context has been undertaken within the documentation. This is to fully understand the implications of placing a design concept within the context, allowing the opportunity to respond to these implications.

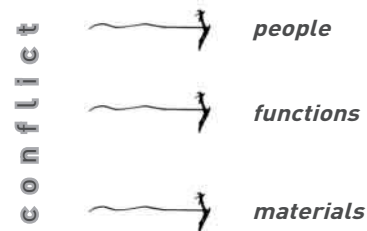
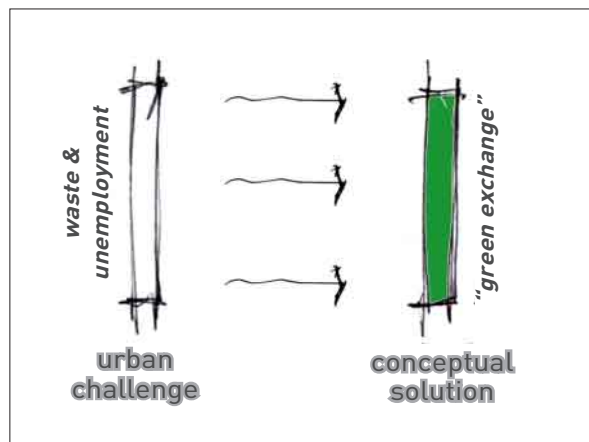


URBAN MANAGEMENT PROCESS

This process has been inspired by the *Curitiba* urban precedent within this document and the associated need within a South African context.

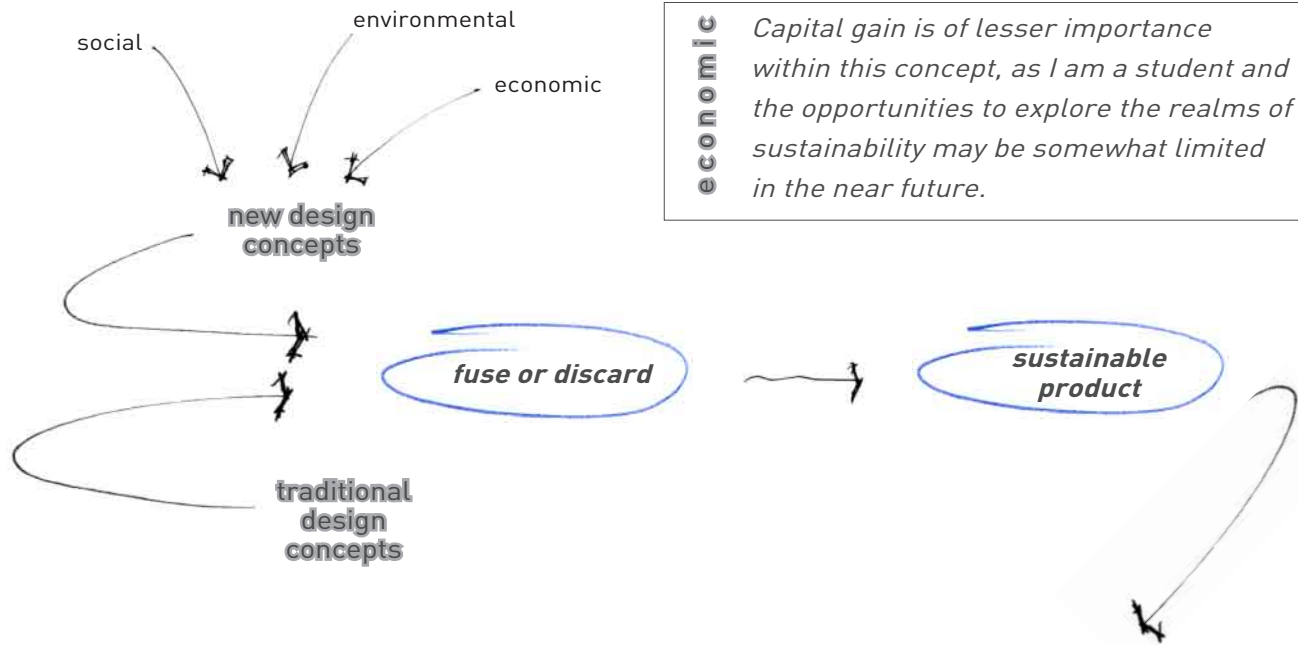
THEORETICAL APPROACH

The concept aims to involve the “hierarchical” groups of our society, with this process involving people who would normally not partake in the urban energy being created within and around the proposed awareness facility. This process will undoubtedly create conflict between these groups. This *conflict* is the tool used to provoke thought and raise awareness.



SUSTAINABILITY

The boundaries of the sustainable approach within this proposal extended beyond just the technical requirements of the building. It deals with social, environmental and economic factors that influence the concept as a whole, within its urban environment.



social

Sustainable in terms of offering a means for people to sustain themselves by having opportunity.

**environ-
mental**

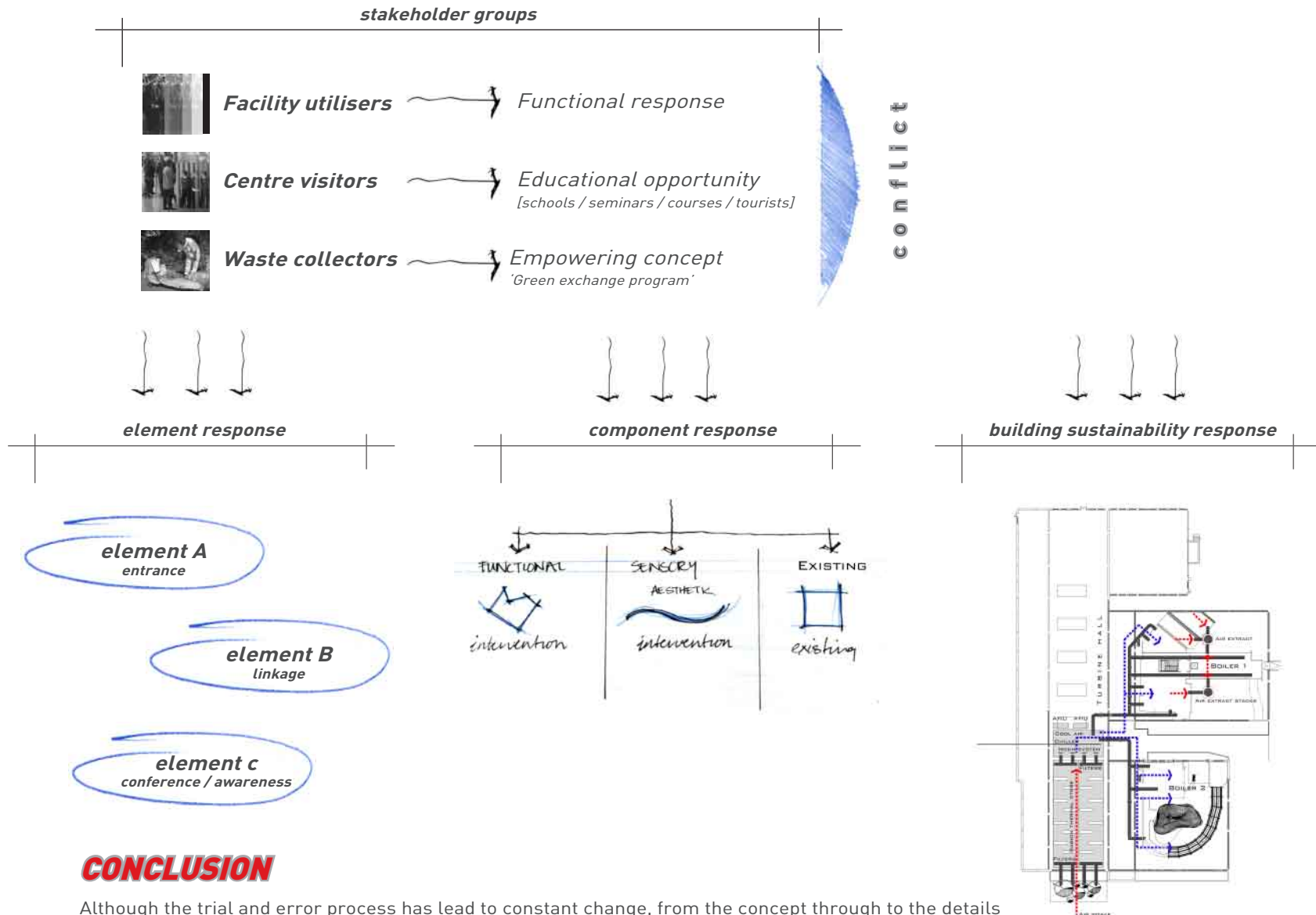
The use of systems to reduce impact on natural resources.

economic

Capital gain is of lesser importance within this concept, as I am a student and the opportunities to explore the realms of sustainability may be somewhat limited in the near future.



CONCEPTUAL PROCESS



CONCLUSION

Although the trial and error process has led to constant change, from the concept through to the details of the project, the result is a high quality conference facility, that supports sustainability, within a waste sorting environment. The design synthesis, although unpredictable, will provoke thought and allow an environment where people can empower themselves - on multiple levels.

LIST OF FIGURES

Stage A		002		
A.1				
A.1.1	South East perspective		B.4	
A.1.2	Existing cooling tower		B.4.1	Pretoria-West precinct
A.1.3	South Elevation		B.4.2	Southwesterly representation of precinct
A.1.4	Conceptual entrance		B.4.3	Historic plan of Precinct <i>Erasmus, M 1997:8</i>
A.1.5	Awareness so as to avoid <i>Breathing Cities 2000:67</i>		B.4.4	Church street commercial spine <i>Adapted from the Pretoria Structure Plan 1993:39</i>
A.1.6	Existing fabric		B.4.5	Pretoria-West major infrastructure
A.1.7	Site generations		B.4.6	Pretoria-West social structure
A.1.8	Conceptual Element placing		B.4.7	Pretoria-West commercial structure
A.1.9	Conceptual Element location		B.4.8	Pretoria-West residential structure
A.1.10	Entrance - East elevation		B.4.9	Pretoria-West movement structure
A.1.11	Section - Heritage connection			
A.1.12	Linkage - Ground floor plan			
A.1.13	Linkage - First floor plan			
A.1.14	Conference / Awareness - Ground floor plan		B.5	
A.1.15	Conference / Awareness - First floor plan		B.5.1	Pretoria-West precinct selected site location
A.1.16	Design components		B.5.2	North / West view of selected site
A.1.17	Sensory Component in functional linkage element		B.5.3	Two stations in one concept
A.1.18	Ventilation / cooling system to segregated environs		B.5.4	Positioning of structures on site <i>Masut. Managing Director, Pretoria-West power station 2003</i>
A.2				
A.2.1	Energising Africa for sustainable development <i>Eskom Annual Report 2001</i>		B.5.5	East view of Power station B
A.2.2	Scale of green representation		B.5.6	East view of site down Michell street
A.2.3	Embracing sustainable development <i>Eskom Annual Report 2001</i>		B.5.7	North / East view of site
A.2.5	Partnership for sustainable development <i>Eskom Annual Report 2001</i>		B.5.8	Elevated view of Buitenkant street
A.3				
A.3.1	Advertisement for British energy pollution <i>Rostvik, H.N 1992:8</i>		B.5.9	Elevated view towards Church street
			B.5.10	Power station A time line
			B.5.11	The erection of cooling tower 2 <i>Masut 2003</i>
			B.5.12	Transport systems around site
			B.5.13	GIS Contour information <i>Department of Geology 2003</i>
			B.5.14	Zoning diagram <i>Land-use rights, Tshwane city council 2003</i>
			B.5.15	Geology map <i>Map 2528CA Pretoria, Geological series 1973</i>
			B.5.16	Climatic zone location <i>Holm 1996:69</i>
			B.5.17	Annual wind rose for Pretoria <i>Holm 1996:70</i>
			B.5.18	Arc of sun <i>Crowther 1977:134</i>
			B.5.19	Verticle sun angle <i>Holm 1996:72</i>
			B.5.20	Solar access for building spacing in Pretoria <i>Holm 1996:71</i>
			B.5.21	Vegetation as solar control <i>Crowther 1977:136</i>
			B.5.22	Psychrometric charts <i>Holm 1996:70 / 71</i>
Stage B		030		
B.1				
B.1.1	Pretoria's city realm			
B.1.2	Global positioning of context <i>Leather, B. Global trading. Bussiness card</i>			
B.2				
B.2.1	Pretoria's dispersed uraban fabric <i>Erasmus, M. Settlement form map1</i>			
B.2.2	Church square representation			
B.2.3	Energy source of pretoria [Church square] <i>City council of Tshwane</i>			
B.2.4	Pretoria access routes <i>Base map - Erasmus, M. Settlement form map1</i>			
B.3				
B.3.1	Commercial sprawl out of Inner city <i>Base map - Erasmus, M. Settlement form map1</i>			
B.3.3	Integrating elements			
B.3.2	Reversal of trends			

Stage C 066

- C.1
 C.1.1 Tate conversion
 C.1.2 Tate internal spaces
The Art Magazine 2000: 3-28
 C.1.3 Power station conversion
The Art Magazine 2000: 3-28
 C.1.4 Site plan, plans and section
Architecture S.A. september + october 1995
 C.1.5 Build environment relationship
 C.1.6 System relationship
 C.1.7 House drawings
Hawkes, D 1995:37
 C.1.8 Section
Hawkes, D 1995:38
 C.1.9 Contextual images
- C.2
 C.2.1 Concept sketch
 C.2.2 Conceptual - regional links of concern to the inner city
Base map - Department of Geology
 C.2.3 Pretoria inner city links
Base map - City council of Tshawane
 C.2.4 Pretoria-West linkage of elements
 C.2.5 Site divide
 C.2.6 Bio-Diesel process
 C.2.7 National demand profile – actual values of 1996 compared with estimated simulation profiles for 2015.
Wilken, A.S. 2001

Stage D 086

- D.2
 D.2.1 Change of use
 D.2.2 Existing boiler houses
 D.2.3 Existing structure analysis
- D.4
 D.4.1 Concept E in development framework
 D.4.2 Public transport routes and site access
 D.4.3 Conceptual layout of entrances
 D.4.4 Scale indicating 400m in 5min and 800m in 10min
 D.4.5 Overnight storage / accommodation
 D.4.6 Segregated environ
 D.4.7 Segregated AV Morph environ
 D.4.8 Security measures
- D.5
 D.5.1 10km radius of Pretoria surrounding site
 D.5.2 Space management at design phase
 D.5.3 Boiler house 2 South Elevation
 D.5.5 Boiler house firing floor level
 D.5.4 Boiler house 1 internal space
 D.5.6 Boiler house 1 Service zones of proposed works

- D.6
 D.6.1 Existing dam on site
 D.6.2 Use of dam water
 D.6.3 Rain water collection
 D.6.4 Naturally ventilated zones
 D.6.5 Natural lighting
 D.6.6 Air intake to southern face
 D.6.7 Proposed cooling system
 D.6.8 Cooling system extract
 D.6.9 Contextual layout of cooling / ventilation system
 D.6.10 Auditorium option 1 - plan / section
 D.6.11 Heat relocation system
- D.7
 D.7.1 Project Feasibility analysis
 D.7.2 Project objectives
 D.7.3 Project Risk analysis

LIST OF TABLES

- B.5
 B.5.1 Mass vs. insulation
Nel 2002
- C.2
 C.2.1 Bio-diesel oil producing plants
www.biodiesel.com/biodiesel_fuel.htm

LIST OF APPENDICES

- | | | |
|-----|-----------------------------------|-----|
| 001 | Low energy system principles | 156 |
| 002 | Ventilation principles | 159 |
| 003 | Preventing overheating principles | 168 |
| 004 | Daylighting principles | 180 |
| 005 | Energy system principles | 185 |
| 006 | Aerial photograph | 188 |