

chapter 8
technical information

8.1. VEGETATION LIST (Joffe 2001) (Palgrave 2000) (Venter & Venter 2002)

TREES			
BOTANICAL NAME	ENGLISH COMMON NAME	DESCRIPTION	DESIGN VALUE
<i>Apodytes dimidiata</i>	White Pear	<ul style="list-style-type: none"> ■ Evergreen ■ Open spreading crown ■ Maximum height of 25m ■ White flowers from September to April ■ Fruit: Black flattened drupe from December to June 	<ul style="list-style-type: none"> ■ Effective screen plant with dense glossy foliage Can be grown as a hedge and reacts well to pruning ■ Attractive specimen plant on the lawn, especially when in flower or fruit ■ Successful shade tree ■ Non-invasive root system
<i>Calodendrum capense</i>	Cape Chestnut	<ul style="list-style-type: none"> ■ Evergreen to deciduous - depending on habitat ■ Roundish dense canopy ■ Maximum height of 25m ■ Light to dark pink scented flower sprays from July to March ■ Fruit: strongly warty splitting capsule from January to May 	<ul style="list-style-type: none"> ■ Valuable shade tree ■ Suitable for street and parking lot plantings at the coast where it is evergreen ■ Attractive specimen tree especially on a lawn with the light grey bark, large leaves, masses of large pink flowers and knobbly fruit ■ Non-aggressive root system
<i>Celtis africana</i>	White Stinkwood	<ul style="list-style-type: none"> ■ Deciduous, semi-deciduous in forests ■ Round dense canopy ■ Maximum height of 40m ■ Yellowish-green flowers at same time as leaves, from August to October ■ Fruit: small yellowish drupe from October to February 	<ul style="list-style-type: none"> ■ Good shade tree ■ Popular street tree - in spite of losing leaves ■ Appropriate in shrubbery - allows sun in winter and shade in summer ■ Architecture of branches make it a focal point ■ Good container plant - water at least once a week ■ Reacts well to pruning
<i>Diospyros whyteana</i>	Forest Monkey Plum	<ul style="list-style-type: none"> ■ Evergreen ■ Dense roundish to pyramidal crown ■ Maximum height of 15m ■ White to creamy-yellow sweetly-scented from July to November ■ Fruit: roundish red fleshy berry enclosed in papery calyx drying to red from November to June 	<ul style="list-style-type: none"> ■ Attractive - neat habit, glossy dark green leaves and the masses of red fruit ■ Good hedge ■ Accent plant ■ Attractive container plant - don't let soil dry out for long periods ■ Root system not aggressive
<i>Ekebergia capensis</i>	Cape Ash	<ul style="list-style-type: none"> ■ Evergreen ■ Roundish crown ■ Maximum height of 20m ■ White loose spray sweetly-scented from September to December ■ Fruit: Spherical, fleshy, red when mature from November to April 	<ul style="list-style-type: none"> ■ Good street tree or shade tree in parking lots ■ Shape and size ideal for park ■ Non-aggressive root system ■ Plant it in suitable spots, especially near or at water points
<i>Ficus capensis</i>	Cape Fig	<ul style="list-style-type: none"> ■ Evergreen ■ Large spreading ■ Up to 12m, can reach 25-30m in some conditions ■ Young leaves conspicuous red ■ Fruit: Figs (3 to 4cm) produced in large heavy branched clusters on the stem and low on the main branches, become red mottled with cream or pink from September to March 	<ul style="list-style-type: none"> ■ Good shade trees - park etc. ■ Surface roots problem in small garden
<i>Grewia occidentalis</i>	Dewberry, Cross-berry	<ul style="list-style-type: none"> ■ Evergreen to semi-deciduous ■ Open but somewhat tangled crown with a spread of up to 5m, in certain areas tends to scramble, main stems somewhat angular ■ Maximum height of 10m ■ Pink to dark mauve in clusters from October to January ■ Fruit: 4-lobed and square, reddish brown, slightly fleshy and shiny when mature from January to May 	<ul style="list-style-type: none"> ■ Takes pruning well and should be trimmed once a year to keep in neat shape ■ Used effectively in shrubbery, giving a delightful display of glossy leaves and mauve flowers ■ Root system non-aggressive and can therefore be planted close to structures

	SOCIO-CULTURAL VALUE	ECONOMICAL VALUE	ECOLOGICAL VALUE	HABITAT
	<ul style="list-style-type: none"> ■ Infusion from root bark - enema for intestinal parasites ■ Leaves boiled whole and eaten with porridge 	<ul style="list-style-type: none"> ■ Excellent wood for furniture (tables and benches) ■ Also used for flooring, veneering, panelling, engraving for printing and for rifle stocks 	<ul style="list-style-type: none"> ■ Ripe fruits eaten from the tree by birds - Rameron pigeons, Redwinged starlings, Pied barbets, Black-eyed bulbuls ■ Dropped fruit eaten by Spotted ground thrushes and Helmeted guineafowl 	<ul style="list-style-type: none"> ■ Variety of habitats ■ From evergreen montane forests to wooded grassland ■ Plants from open exposed rocky ridges are gnarled and sometimes not higher than 1m
	<ul style="list-style-type: none"> ■ Cut flowers long lasting in water ■ Crushed seeds can be boiled and soap made from the resultant oils 	<ul style="list-style-type: none"> ■ Wood popular for furniture, moderately heavy with smooth finish ■ Also used for cabinet-work, turning and shelving ■ Implement handles - tough and pliable wood 	<ul style="list-style-type: none"> ■ Attracts various insects and butterfly species to the flowers with the instar larvae of swallowtail species of butterflies feeding on the leaves ■ 13 other insect species have been identified as feeders ■ Fruits eaten by samango and vervet monkeys but also various bird species (Cape parrots, Rameron pigeons, cinnamon doves) 	<ul style="list-style-type: none"> ■ Not restricted to any specific habitat ■ Forest habitat - straight stems, sometimes buttressed ■ Hot, dry valleys - low, gnarled with dark grey bark and small leaves and flowers
	<ul style="list-style-type: none"> ■ Ripe fruit has pleasant sweet taste with thin flesh ■ Popular bonsai specimen 	<ul style="list-style-type: none"> ■ Leaves and young branches eaten by domestic stock ■ Wood used for general timber on the farm and for manufacturing furniture (good wood for shelving as it takes nails and screws well and doesn't warp) ■ Young branches and coppice shoots are popular as handles for implements ■ Wood carves easily and is durable (household articles - spoons to dishes) 	<ul style="list-style-type: none"> ■ Popular tree with fruit-eating birds ■ Larvae of the African snout and blue-spotted charaxes butterflies live on the tree 	<ul style="list-style-type: none"> ■ High rainfall areas in forests and along streams ■ Lower rainfall areas in woodland or grassland, on termite mounds or on rock outcrops ■ Not restricted to a specific type of soil
	<ul style="list-style-type: none"> ■ Enema made from bark to treat impotency and infertility ■ Itchy rash on skin is treated with an infusion of the leaf and root ■ Berries are edible but with a bittersweet taste and therefore not popular ■ Yellowish seeds can be roasted, ground and used as a substitute for coffee with an agreeable taste ■ Popular to bonsai 	<ul style="list-style-type: none"> ■ Leaves browsed by stock and game ■ Good furniture wood for making small household articles (excellent pick handles) 	<ul style="list-style-type: none"> ■ Popular with fruit-eating birds (Rameron pigeons, African green pigeons, louries, barbets and bulbuls), which open the papery calyx as soon as it starts to turn red to get at the fleshy red berries 	<ul style="list-style-type: none"> ■ Grows in forests, scrub forests, shady kloofs and on mountain slopes ■ Mostly in shade along mountain streams
	<ul style="list-style-type: none"> ■ Bark contains 7,23% tannin and is used for tanning leather ■ Bark used as emetic and in treatment of dysentery ■ Leaves used as a remedy for intestinal worms ■ Decoction of root used for a chronic cough and taken orally for the relief of headaches 	<ul style="list-style-type: none"> ■ Good furniture and panelling wood, must be treated with zinc chloride against insects ■ Good general timber (beams) ■ Domestic stock and game 	<ul style="list-style-type: none"> ■ Baboons, vervet and samango monkeys, bushpig, bushbuck and nyala eat the fallen fruit underneath the tree ■ Attracts fruit-eating birds (Knysna and purple-crested louries, barbets, hornbills, bulbuls and mousebirds) ■ Larvae of the white-barred charaxes feed on the leaves 	<ul style="list-style-type: none"> ■ Mostly evergreen woodland ■ Riverine, coastal sandveld or ■ Montane forests above 1200m altitude ■ Always in well-drained soil
	<ul style="list-style-type: none"> ■ Figs sweet but insipid flavour but can be used for jam if apples of other suitable fruits are added ■ Several African folk remedies: ■ Burns and septic conjunctivitis are treated with an application of its latex and an infusion from its leaves and bark is administered to cows if their milk-production is inadequate 	<ul style="list-style-type: none"> ■ Timber little commercial value, but has practical uses: drums, brake blocks are wagons, sticks fire by friction 	<ul style="list-style-type: none"> ■ Fuit attract birds 	<ul style="list-style-type: none"> ■ Forests ■ Open wooded grassland
	<ul style="list-style-type: none"> ■ Bruised bark soaked in hot water is used for dressing wounds ■ Assegai handles and walking sticks made from branches of this tree in Eastern Cape and in Zimbabwe ■ Ripe fruits eagerly eaten by humans who enjoy its sweet fruity taste ■ In certain areas where the sugar content of the fruits is high, fruits are collected and dried for later use, dried fruits are sometimes boiled in milk - beats any milkshake ■ Beer brewed from ripe fruit in certain areas 	<ul style="list-style-type: none"> ■ Leaves browsed by cattle, goats and game 	<ul style="list-style-type: none"> ■ Ripe fruits eaten by various birds (Knysna louries, speckled mousebirds, black-eyed and Cape bulbuls and barbets) ■ Instar larvae of the rufous-winged elfin butterfly and buff-tipped skipper butterfly live on the leaves 	<ul style="list-style-type: none"> ■ Wide variety of habitats from arid Karoo ■ Coastal dune bush to evergreen montane forests

BOTANICAL NAME	ENGLISH COMMON NAME	DESCRIPTION	DESIGN VALUE
Halleria lucida	Tree Fuchsia	<ul style="list-style-type: none"> ■ Evergreen ■ Opposite branches and a dense roundish crown with somewhat drooping branches ■ Maximum height of 30m in forests and 10m in wooded grassland ■ Orange to red single or cluster flowers from April to December ■ Fruit: fleshy berries, black when mature from June to February 	<ul style="list-style-type: none"> ■ Well-suited to shrubbery where it provides glossy-green foliage and colour ■ Inclusion in garden for bird enthusiast ■ Non-aggressive root system
Ilex mitis	Cape Holly	<ul style="list-style-type: none"> ■ Evergreen ■ Dense slightly elongated to rounded crown ■ Maximum height of 30m ■ White to cream-coloured clusters, sweetly-scented from September to February ■ Fruit: roundish fleshy berry and glossy red when ripe from March to May 	<ul style="list-style-type: none"> ■ Good accent plant ■ Near to water ■ Street tree ■ Root system not aggressive
Kiggelera africana	Wild Peach	<ul style="list-style-type: none"> ■ Semi-deciduous to evergreen ■ Broadly rounded, spreading to pyramidal ■ Maximum height of 20m ■ Yellowish to greenish-white male and female on separate trees and differ, from August to January ■ Fruit: roundish woody capsule with warty surface splitting into 5 valves, orange-red seeds from February to July 	<ul style="list-style-type: none"> ■ Can be planted in camps to provide shade for animals during summer ■ Windbreak along margins of crops ■ Effective shade tree if lower branches are pruned away to give the tree a clear and straight trunk ■ Root system non-aggressive
Leucadendron argenteum	Silver Tree	<ul style="list-style-type: none"> ■ Evergreen ■ Conical, spreading as it ages ■ Maximum height of 6m ■ Silver leaves accent ■ Male flowers - apricot, Female flowers - silver sheen ■ Cones release small black seeds in Autumn 	<ul style="list-style-type: none"> ■ Ornamental tree - especially with regards to foliage ■ Plant in lawn or shrubbery
Nuxia floribunda	Forest / Wild Elder	<ul style="list-style-type: none"> ■ Evergreen ■ Dense rounded crown ■ Maximum height of 20m ■ Much branched heads up to 300mm in diameter, white and scented flowers, buds sticky and resinous from May to August ■ Fruit: capsule splitting into 2 valves from June to October 	<ul style="list-style-type: none"> ■ Attractive street and garden tree ■ Root system non-invasive and can be planted next to paved areas and structures ■ Focal feature when in full flower
Olea europaea subsp. africana	Wild Olive	<ul style="list-style-type: none"> ■ Evergreen ■ Spreading rounded crown ■ Maximum height of 14m ■ Sweetly-scented creamy-white inflorescences from October to February ■ Fruit: thinly fleshy drupe black when mature from March to August 	<ul style="list-style-type: none"> ■ Ideal choice for garden or street ■ Windbreak, protection, shading ■ Extensive root system - good tree for stabilising erosion dongas ■ Root system sometimes aggressive and it is not advisable to plant the wild olive close to structures or paving
Podocarpus falcatus	Outeniqua Yellowwood	<ul style="list-style-type: none"> ■ Evergreen ■ Conical to rounded and sparse, open texture ■ Maximum height of 15m, natural habitat can reach 60m ■ Fruit: Male cones 1cm x 0,3cm; large fleshy rounded seeds (female cones) ripen to deep yellow September to May 	<ul style="list-style-type: none"> ■ Attractive foliage plant ■ Can look impressive lining a driveway or an avenue ■ Planted singly or in groups in park or garden ■ Windbreak or screen on a farm (wood utilised)
Podocarpus latifolius	Real Yellowwood	<ul style="list-style-type: none"> ■ Evergreen ■ Large rounded with clear trunk ■ Up to 20-30m in height ■ Fruit: Cones July to September, with seeds ripening from December to February 	<ul style="list-style-type: none"> ■ Seeds and receptacles are very showy - striking when tree is bearing heavily ■ Worthwhile garden subject even though it grows very slowly
Rapanea melanophloes	Cape Beech	<ul style="list-style-type: none"> ■ Evergreen ■ Medium to tall usually 4 to 10m (forest 20m) Flowers: small greenish or whitish, inconspicuous in few-flowered clusters from June to August, continuing on to December ■ Fruit: spherical thinly fleshy, up to 5mm, green becoming white and finally purple from September to March 	<ul style="list-style-type: none"> ■ Hardy and attractive in garden

	SOCIO-CULTURAL VALUE	ECONOMICAL VALUE	ECOLOGICAL VALUE	HABITAT
	<ul style="list-style-type: none"> ■ An infusion made from moistened dry leaves and roots is dripped into the ear to relieve earache ■ A straight, dry branchlet can be used as the turning stick when making fire by friction ■ Black fleshy fruits are edible, with a sweet taste and can be stored for a reasonably long period when ripe 	<ul style="list-style-type: none"> ■ Leaves browsed by stock and game 	<ul style="list-style-type: none"> ■ Nectar-rich flowers very popular with sunbirds and bees ■ Popular with fruit-eating birds (Rameron pigeons, Knysna and purple-crested louries, Cape parrots, Kurrichane, thrushes, bulbuls, robins and white-eyes) 	<ul style="list-style-type: none"> ■ Mostly near water ■ Also on rocky outcrops on grassy mountain slopes ■ Wooded grassland ■ And in evergreen forests
	<ul style="list-style-type: none"> ■ Fruits are edible with a faint sweetish taste, but can be bitter ■ Pieces of bark chewed as purgative - having a mild action in most people 	<ul style="list-style-type: none"> ■ Wood makes good and durable furniture and is still used for tables and chairs today, wood darkens slightly after many years of oiling taking on a beautiful honey colour 	<ul style="list-style-type: none"> ■ Ripe fruits popular with most birds (Rameron pigeons, cinnamon doves, Knysna and purple-crested louries, black-eyed bulbuls, red-winged and plum-coloured starlings, and pied and crested barbets) 	<ul style="list-style-type: none"> ■ Evergreen woodland and forests ■ Always near water or with its roots in the water ■ Grows mostly in shade
		<ul style="list-style-type: none"> ■ Leaves contain hydrocyanic acid and are not utilised by stock or game ■ Wild peach wood was popular for furniture and is still used by a few cabinet makers in the Eastern Cape and KwaZulu-Natal ■ Also for beams and floor-boards 	<ul style="list-style-type: none"> ■ Oil-rich aril on the seeds attracts many fruit-eating birds species (Rameron pigeons, cinnamon doves, olive woodpeckers, Knysna and purple-crested louries, crowned and trumpeter hornbills, Cape and Heuglin's robins, boubou shrikes, red-winged starlings, Cape thrushes, white-eyes and mousebirds) - makes it difficult to find ripe seeds in open capsules ■ Larvae of the garden acraea, dusky-veined acraea and the battling glider butterflies eat the leaves - and these are eaten by Klaas's, Diederik and emerald cuckoos 	<ul style="list-style-type: none"> ■ Evergreen forest ■ Rocky outcrops ■ Wooded grassland ■ Along drainage lines ■ More gnarled in full sun and dry habitat with smaller, thicker texture leaves
	<ul style="list-style-type: none"> ■ Foliage popular for floral arrangements 		<ul style="list-style-type: none"> ■ Attracts useful insects like bees and butterflies 	<ul style="list-style-type: none"> ■ Eastern slopes (especially Table Mountain)
	<ul style="list-style-type: none"> ■ Education and skills-training - honey-making 	<ul style="list-style-type: none"> ■ Leaves browsed by stock and game ■ Copious nectars makes it a good honey-tree ■ Wood can be used for parquet floors, turnery and furniture (relatively heavy with a pleasing light colour and very fine grain, colour of oiled furniture deepens to a light brown after about 10 years) 	<ul style="list-style-type: none"> ■ Bunches of flowers attract all kinds of insects and they in turn attract many insect-eating birds 	<ul style="list-style-type: none"> ■ Evergreen montane forests ■ Along rivers in high-lying areas
	<ul style="list-style-type: none"> ■ Fruits edible, some trees bitter but others quite pleasant to eat ■ Leaves soaked in water substitute for tea ■ Infusion from fresh bark is used to relieve colic ■ Infusion from leaves is used as an eye lotion for humans and cattle ■ Decoction of leaves is used as a gargle for sore throats ■ Snuff made from dried leaves is used to stop bleeding of the nose ■ Some areas juice is used to make ink ■ A favourite for training as a bonsai 	<ul style="list-style-type: none"> ■ Much browsed by stock and game ■ Valuable fodder tree in drier areas ■ Termite and borer-resistant wood makes durable fencing posts lasting for up to a century ■ Resistant to most diseases - successfully used as a graft for the cultivated olive ■ Popular wood for turnery, carvings, cabinet work and furniture (wood darkens with age) 	<ul style="list-style-type: none"> ■ Tree occurs on calcrete soil and acts as an indicator for calcrete ■ Attracts fruit-eating birds 	<ul style="list-style-type: none"> ■ Almost any type of habitat ■ Especially woodland, stream banks and rocky hill slopes
	<ul style="list-style-type: none"> ■ Historical value - big tree (tallest South African forest tree) 	<ul style="list-style-type: none"> ■ Pale-yellow fine-grained wood is very popular for boat-building, ceilings, window frames, floorboards, table tops and high quality furniture ■ Experimental plantings have shown that this yellowwood can be grown in plantation format in much the same way as pine 	<ul style="list-style-type: none"> ■ Fleshy female fruit eaten by bats, monkeys, bushpigs and birds (pigeons, louries, parrots) 	<ul style="list-style-type: none"> ■ Coastal swamp forest ■ Mountain forest
	<ul style="list-style-type: none"> ■ Timber - Floors in the fine old Cape homesteads 	<ul style="list-style-type: none"> ■ Yield fine timber of a uniform pale yellow colour, seasons and saws well, works easily and takes a good finish ■ One of most used and popular indigenous timbers 	<ul style="list-style-type: none"> ■ Fleshy female fruit eaten by bats, monkeys, bushpigs and birds (pigeons, louries, parrots) 	<ul style="list-style-type: none"> ■ Evergreen forests ■ Patches of mountain forest and also on exposed mountainsides (low growing and stunted)
	<ul style="list-style-type: none"> ■ The Zulus use a decoction of the bark as an expectorant and an emetic 	<ul style="list-style-type: none"> ■ Wood is fine-grained, very attractive and durable, it works well and takes a fine polish - much prized for cabinet work and in recent years has been used in the making of violins 	<ul style="list-style-type: none"> ■ Fruit eaten by birds ■ Flowers attract useful insects like bees and butterflies 	<ul style="list-style-type: none"> ■ Evergreen forest ■ Riverine fringes ■ Sometimes drier coastal and mountain forests

BOTANICAL NAME	ENGLISH COMMON NAME	DESCRIPTION	DESIGN VALUE
<i>Rothmannia capensis</i>	Wild Gardenia	<ul style="list-style-type: none"> ■ Evergreen ■ Contorted ■ Usually 7m, natural habitat up to 20m ■ Flowers are large creamy-white bells and speckled maroon December to February ■ Fruit: rounded (5-6cm diameter) 	<ul style="list-style-type: none"> ■ Attractive floral tree ■ Non-aggressive root system ■ Suitable for any size garden
<i>Salix mucronata</i>	Cape Willow	<ul style="list-style-type: none"> ■ Evergreen ■ Weeping ■ Usually 8m, natural habitat up to 12m ■ Small yellowish flowers in short spikes August to October ■ Fruit: small capsules that split to release tufted woolly seeds 	<ul style="list-style-type: none"> ■ Wonderful for planting next to large dams and along streams ■ Rather aggressive root system
<i>Vepris lanceolata</i>	White Ironwood	<ul style="list-style-type: none"> ■ Evergreen ■ Dense and rounded, shrub or tree ■ Usually 7m, natural habitat up to 28m ■ Sprays of tiny yellowish flowers December to March ■ Fruit: dotted with oil glands that release a citrus smell when crushed, small slightly fleshy fruits ripen to black 	<ul style="list-style-type: none"> ■ Good screen plant

SHRUBS

<i>Aloe arborescens</i>	Krantz Aloe	<ul style="list-style-type: none"> ■ Medium Evergreen ■ Rounded ■ 2 x 3m ■ Spikes of brilliant-red tubular flowers high above leaves (produce abundant nectar) from May to July ■ Succulent blue-grey leaves 	<ul style="list-style-type: none"> ■ Important garden specimen - nectar and colour ■ Excellent focal plant in rockery ■ Used as a hedge to protect stock ■ Crops situated on a bank to help control erosion
<i>Aloe ferox</i>	Bitter Aloe	<ul style="list-style-type: none"> ■ Medium Evergreen ■ Bare stem, small rounded crown of leaves and branches ■ 2,5 x 1m ■ Tall stunning spikes of tubular orange-red flowers that are carried on showy candelabra-like flowerheads from May to September ■ Thick rosettes of thorny succulent leaves 	<ul style="list-style-type: none"> ■ Focal point for rockery ■ Non-aggressive root system
<i>Anisodonteia scabrosa</i>	Pink Mallow	<ul style="list-style-type: none"> ■ Small Evergreen ■ Rounded, tend to become leggy, sparse and untidy ■ 1,8 x 1m ■ Masses of smallish (2cm) pink-mauve flowers each marked with dark-pink streaks (free-flowering) from August to March ■ Soft hairy three-lobed leaves that are aromatic and often sticky 	<ul style="list-style-type: none"> ■ Mass plant this rather erect shrub to form a good groundcover ■ Plant in informal border ■ Use as a temporary filler until slower shrubs have grown and established themselves
<i>Barleria obtusa</i>	Bush Violet	<ul style="list-style-type: none"> ■ Small Evergreen ■ Rounded bushy shrub that tends to sprawl or scramble ■ 0,75 x 1m ■ Small soft oval leaves covered in silky hairs ■ Masses of tubular blue-mauve, pink or white flowers from March to April 	<ul style="list-style-type: none"> ■ Wonderful for an informal area of the garden where it can happily scramble ■ Suited to tub or container - flowers and leaves hang over edges
<i>Buddleja saligna</i>	False Olive	<ul style="list-style-type: none"> ■ Large Evergreen ■ Much-branched crown with drooping branches ■ 4 x 3m ■ White to cream-coloured flowers from August to January ■ Fruit: 2mm long capsule from September to March 	<ul style="list-style-type: none"> ■ Tends to become untidy and woody after a season or two ■ Should be pruned back fairly hard after flowering to ensure neat, compact shape ■ Excellent hedge or screen and reacts well to pruning ■ When in flower - superb focal point ■ Non-aggressive root system - can be planted near buildings and other structures

	SOCIO-CULTURAL VALUE	ECONOMICAL VALUE	ECOLOGICAL VALUE	HABITAT
	<ul style="list-style-type: none"> ■ Traditional remedies prepared from this tree deal with the healing of wounds, burns and rheumatism 	<ul style="list-style-type: none"> ■ Strong hard wood is used for building, spoons and tools 	<ul style="list-style-type: none"> ■ Baboons, Vervet and Samango Monkeys, bushpigs and Grey Duiker have liking to fruit ■ Always with a bird or two in branches ■ Attracts useful insects like bees and butterflies 	<ul style="list-style-type: none"> ■ Forests ■ Kloofs ■ Forest margins ■ Rocky ridges
	<ul style="list-style-type: none"> ■ Baskets made from the young shoots ■ Wood is used as firesticks ■ Branch tips and leaves are widely used to treat rheumatism and fever 	<ul style="list-style-type: none"> ■ Wood used to make household articles and ornaments 	<ul style="list-style-type: none"> ■ Monkeys eat the flowers ■ Leaves browsed by game and used as fowl food ■ Larvae of the African Leopard butterfly feed on the leaves ■ Water birds breed in tree ■ Control erosion on stream banks (Plant trees close together) 	<ul style="list-style-type: none"> ■ Leans far out of water ■ Along rivers and streams
	<ul style="list-style-type: none"> ■ A root remedy is traditionally used to treat flu and colic 	<ul style="list-style-type: none"> ■ Hard, white, strong and pliant wood is used for implement handles (hammers, picks), tent hoops and durable roof beams 	<ul style="list-style-type: none"> ■ Fruit favoured by Redwinged Starling, Blackeyed Bulbul, doves, louries and pigeons ■ The Citrus Mocker, Whitebanded and Greenbanded Swallowtail butterflies breed on this tree ■ Porcupines eat the bark, ringbarking and eventually killing the trees ■ Excellent for the bird garden - the flowers lure insect pollinators which, in turn, attract insectivorous birds 	<ul style="list-style-type: none"> ■ Coastal bush ■ Riverine bush ■ Evergreen Forest ■ Dry Forest ■ Sand dunes
	<ul style="list-style-type: none"> ■ Fresh leaf sap is used to treat bruises, burns, abrasions and other skin complaints 		<ul style="list-style-type: none"> ■ Nectar attracts sunbirds, Crested Barbet, Cape White-eye, Blackheaded Oriole, Streaky-headed Canary, Yellowthroated Sparrow, Blackeyed Bulbul and Grey Lourie (some eat flowers) ■ Woodhoopoes probe for insects under dead, dried leaves 	<ul style="list-style-type: none"> ■ High mountainous areas
	<ul style="list-style-type: none"> ■ Purgative drug used in several medicines - eg. 'Lewensessens' ■ Leaf gel is used to make preserves and is used in hair and skin care products ■ Split or crushed leaves are applied directly onto sunburn, burns and scalds, open wounds, sores, itchy insect bits or ulcers ■ Dried, ground leaves used as snuff 	<ul style="list-style-type: none"> ■ Cut leaves exude copious thick yellow juice which is collected and concentrated by boiling to a dark brown lumpy substance called Cape Aloes. This is used to produce a purgative drug and has been exported for more than 200 years 	<ul style="list-style-type: none"> ■ Attractive to birds - nectar ■ Attractive to useful insects like bees and butterflies 	<ul style="list-style-type: none"> ■ Bush scrub ■ Hillsides ■ Rocky mountain slopes
			<ul style="list-style-type: none"> ■ Attractive to useful insects like bees and butterflies 	<ul style="list-style-type: none"> ■ Along the coast
			<ul style="list-style-type: none"> ■ The leaves are often browsed by game ■ Flower attract butterflies 	
	<ul style="list-style-type: none"> ■ Root scrapings used as a purgative and to induce vomiting ■ A decoction made from leaf is used to treat coughs and colds 	<ul style="list-style-type: none"> ■ Straight stems are used for fence poles ■ Heavy, dense wood makes an excellent fuel generating intense heat ■ Favourite with bee farmers as the mass of flowers produce copious nectar and pollen 	<ul style="list-style-type: none"> ■ One of best trees to attract butterflies - masses of small white flowers 	<ul style="list-style-type: none"> ■ Most habitat types ■ Except in forests ■ Very common in dry, deciduous woodland along drainage lines

BOTANICAL NAME	ENGLISH COMMON NAME	DESCRIPTION	DESIGN VALUE
<i>Buddleja salviifolia</i>	Sagewood	<ul style="list-style-type: none"> ■ Large Semi-deciduous to evergreen ■ Dense roundish crown with drooping branches ■ 5 x 4m ■ White to purple tubular scented flowers from August to October ■ Fruit: ovoid capsule from October to December 	<ul style="list-style-type: none"> ■ If pruned often can be used as edge - attractive when in full flower ■ Perfect background plant ■ Neat and colourful container plant ■ Must be pruned if tree is required ■ Aggressive root system
<i>Burchellia bubalina</i>	Wild Pomegranate	<ul style="list-style-type: none"> ■ Medium Evergreen ■ Round form that stays neat ■ 2,5 x 1,5m ■ Clusters of tubular nectar-rich orange to coral-red flowers from September to January 	<ul style="list-style-type: none"> ■ Ornamental ■ Does well in a large container ■ Plant under large trees or in a mixed shrub border
<i>Carissa macrocarpa</i>	Big Num-num	<ul style="list-style-type: none"> ■ Large Evergreen ■ Usually forms a dense thorny shrub, it may also grown into a small tree up to 4m high ■ 3 x 2m ■ Strong stiff spines, once or twice forked and glossy dark green foliage ■ Large up to 5cm long bright-red oval fruits that are deliciouciuous and rich in Vitamin C ■ Starry-white, sweetly-scented flowers from September to January 	<ul style="list-style-type: none"> ■ Attractive ornamental ■ Popular both for its excellent nutritious fruits and for its ability to form a dense impenetrable hedge ■ Set the plants out close together, about a metre apart, to form the hedge, and prune if necessary ■ Wind resistant
<i>Cassinopsis ilicifolia</i>	Holy Cassinopsis Lemon Thorn	<ul style="list-style-type: none"> ■ Medium Evergreen ■ Round to scrambling, may form a small tree ■ 2,5 x 4m ■ Insignificant creamy-green flowers from September to November ■ Oval bright-orange fruits 	<ul style="list-style-type: none"> ■ May be allowed to scramble into surrounding trees and shrubs ■ Prune back to keep it looking like a shrub ■ Dense and can be used to form an effective natural barrier since it is fairly spiny - set new plants close together ■ Clusters of tubular nectar-rich orange to coral-red flowers from September to January
<i>Chrysanthemoides monilifera</i>	Bush-tick Berry	<ul style="list-style-type: none"> ■ Medium Evergreen ■ Large, dense and spreading (prune to keep neat) ■ 2 x 2,5m ■ Daisy-like yellow flowers in Spring ■ Sweet, tasty purple, black or red berries 	<ul style="list-style-type: none"> ■ Excellent hedge, windbreak or screen plant ■ Plant singly or in large groups to form attractive and effective groundcover, even under large mature trees ■ Use as a temporary filler, until slower shrubs have grown and established themselves
<i>Crassula ovata</i>	Pink Joy	<ul style="list-style-type: none"> ■ Small Evergreen ■ Rounded ■ 1,8 x 1,5m ■ Masses of pretty pale-pink, star-shaped flowers from May to July ■ Dark green succulent leaves 	<ul style="list-style-type: none"> ■ Sheltered position ■ Ideal for rockery or for an informal shrub border ■ Grow in large decorative containers
<i>Dietes grandiflora</i>	Wild Iris	<ul style="list-style-type: none"> ■ Small Evergreen ■ Clump of strap-shaped leaves ■ 1 x 1m ■ Large delicate white-orange-and-mauve flowers on 1m tall stalks 	<ul style="list-style-type: none"> ■ Mass plant ■ Singly as accent plant next to pond, steps or an attractive rock
<i>Dodonaea angustifolia</i>	Sand Olive	<ul style="list-style-type: none"> ■ Large Evergreen ■ Rounded dense and sometimes small tree up to 6m ■ 4 x 4m ■ Small yellow-green flowers from April to August ■ Decorative clusters of winged greensih-red fruits ■ Droopy shiny leaves which are resinous 	<ul style="list-style-type: none"> ■ Good hedge or screen plant ■ Stabilise sand dunes and control erosion
<i>Felicia filifolia</i>	Fine-leaved Felicia	<ul style="list-style-type: none"> ■ Small Evergreen ■ Rounded ■ 1 x 1m ■ Masses of pale-mauve to white daisy flowers in September 	<ul style="list-style-type: none"> ■ Plant in groups in informal border or in rockery
<i>Gardenia thunbergia</i>	Starry Gardenia	<ul style="list-style-type: none"> ■ Large Evergreen ■ Rounded shrub or small tree ■ 5 x 3m ■ Large starry white fragrant flowers in summer ■ Distinctive egg-shaped grey fruits are speckled with whitish encrustations (very hard and woody and remain on the tree for a long time) 	<ul style="list-style-type: none"> ■ Breathtaking in full flower - scent fills air ■ Plant near stream or pond ■ Decorative shrub ■ May be grown in a container ■ Use in an informal border, or in an open space as a focal feature

	SOCIO-CULTURAL VALUE	ECONOMICAL VALUE	ECOLOGICAL VALUE	HABITAT
	<ul style="list-style-type: none"> ■ A decoction of the root is used as a remedy for coughs and colic ■ Infusion of leaves is applied as eye lotion ■ Fresh or dried leaves boiled and used as tea - drink without milk but with honey 	<ul style="list-style-type: none"> ■ Flowers produce a fair amount of pollen and nectar, making it a popular tree with bee farmers ■ Leaves browsed by game 	<ul style="list-style-type: none"> ■ One of best plants to attract a variety of insect species and therefore insect-eating birds ■ At least 15 species of butterflies visit these bushes when in flower, but it is the host plant for only one species, the African leopard butterfly ■ Valuable for stabilising embankments along dams, furrows, streams and rivers - strong roots able to grow in flowing water, habit of sending out strong shoots after veld fire, adaptability to soil and climatic conditions 	<ul style="list-style-type: none"> ■ Forest margins ■ Rocky outcrops ■ Along drainage lines, especially those with permanent water
	<ul style="list-style-type: none"> ■ Roots are traditionally added to body washes and used to prepare a love charm 		<ul style="list-style-type: none"> ■ Whitebellied, Collared Olive and Black Sunbirds are lured by rich nectar and are constant visitors in early summer ■ Attractive to useful insects like bees and butterflies 	<ul style="list-style-type: none"> ■ Forests ■ Light shade
	<ul style="list-style-type: none"> ■ Delicious fruit eaten whole ■ Exceptional jelly made from fruit ■ Pink dye is obtained from the fruit 		<ul style="list-style-type: none"> ■ Baboons, monkeys and fruit-eating birds and other animals enjoy fruit ■ Attractive to useful insects like bees and butterflies 	<ul style="list-style-type: none"> ■ Coastal bush ■ Coastal forest and sand dunes
	<ul style="list-style-type: none"> ■ Seeds are worn as ornaments ■ A bark remedy traditionally treats dysentery 		<ul style="list-style-type: none"> ■ Attractive to birds (fruit) and useful insects like bees and butterflies 	<ul style="list-style-type: none"> ■ Edge of evergreen forest ■ Riverine bush ■ Wooded kloof and along streams
	<ul style="list-style-type: none"> ■ Berries used to be important food source for Khoi (now eaten by children) ■ Traditionally leaf infusions are used to deal with fevers ■ Fruit juice is taken in small doses to purify the blood and deal with impotence 	<ul style="list-style-type: none"> ■ Soap has been made from the ashes 	<ul style="list-style-type: none"> ■ Fruit-eating birds such as African Green Pigeon, Fiscal Flycatcher, Redwinged and Glossy Starlings, Crested and Blackcollared Barbets and Collared Sunbirds are partial to the fruit ■ Larvae of Common Opal, Beaufort Opal, Natal Opal, Coast Copper and Thysbe Copper butterflies feed on this plant 	<ul style="list-style-type: none"> ■ On the flats and on the mountain slopes
	<ul style="list-style-type: none"> ■ Roots were once eaten by the Khoikhoi ■ Other African tribes are said to have grated the root and cooked it, after which it was eaten with thick milk 		<ul style="list-style-type: none"> ■ Flowers attract a variety of insects, such as bees, beetles with a metallic sheen and beautiful butterflies (Burnished Opal, Cape Black-eye and Pale Hairtail) 	<ul style="list-style-type: none"> ■ Rocky slopes ■ Sheltered ravines ■ Intermingled with riverside vegetation
			<ul style="list-style-type: none"> ■ Attract lots of bees and other pollinators 	<ul style="list-style-type: none"> ■ Forest margins ■ Near streams
	<ul style="list-style-type: none"> ■ Traditional remedy for fever, colds, throat infections, flu and arthritis is prepared from the new leaf tips (well known to early Cape settlers, who used it to treat fever) ■ Plant was also used to cure pneumonia, tuberculosis and skin rashes 		<ul style="list-style-type: none"> ■ Attractive to useful insects like bees and butterflies 	<ul style="list-style-type: none"> ■ A variety of habitats ■ From arid semi-desert regions to the margins of moist evergreen forest (reaches 7m)
	<ul style="list-style-type: none"> ■ In rural areas it is often used as fuel (this poisons sheep) 		<ul style="list-style-type: none"> ■ Attractive to useful insects like butterflies and bees 	<ul style="list-style-type: none"> ■ Rocky places ■ Often on hillside and mountainsides
	<ul style="list-style-type: none"> ■ A root infusion is traditionally used to treat biliousness while a remedy prepared from the leaves is a treatment for syphilis 	<ul style="list-style-type: none"> ■ Hard wood is used for tools and implement handles 	<ul style="list-style-type: none"> ■ Antelope eat the fruits and the flowers attract moths ■ Attractive to other useful insects like bees and butterflies 	<ul style="list-style-type: none"> ■ Evergreen forest and woodland

BOTANICAL NAME	ENGLISH COMMON NAME	DESCRIPTION	DESIGN VALUE
<i>Grewia occidentalis</i>	Crossberry	<ul style="list-style-type: none"> ■ Large deciduous to evergreen ■ Rounded to long, narrow and spase, to creeper ■ 5 x 3m ■ Starry pink-purple with a central mass of fluffy stamens from November to February ■ Small edible four-lobed fruits 	<ul style="list-style-type: none"> ■ Non-aggressive root system - can be positioned alongside driveways and other structures ■ Use in informal border in home garden to attract birds ■ Prune whenever necessary to keep neat
<i>Helichrysum splendidum</i>	Cape Gold	<ul style="list-style-type: none"> ■ Small Evergreen ■ Rounded dense and erect ■ 1,5 x 1,5m ■ Small golden yellow flowers in flattish heads from October to January ■ Attractive silver-grey foliage 	<ul style="list-style-type: none"> ■ Aromatic ■ Dazzling groundcover
<i>Hypoestes aristata</i>	Ribbon Bush	<ul style="list-style-type: none"> ■ Small Evergreen ■ Rounded dense and erect ■ 1,5 x 1m ■ Pretty spikes of tubular mauve or pink flowers (petals curl over like ribbons) from May onwards 	<ul style="list-style-type: none"> ■ Mass plant under large trees - effective groundcover
<i>Leonotis leonurus</i>	Wild Dagga	<ul style="list-style-type: none"> ■ Medium Evergreen perennial ■ Rounded ■ 2 x 2,5m ■ Bright orange nectar-rich velvety flowers are displayed in whorls at the tops of each stem in Autumn ■ Sweet, tasty purple, black or red berries 	<ul style="list-style-type: none"> ■ Perfect candidate for the bird garden ■ Use in informal mixed border, on a rockery, or closed planted in groups of 3-5 plant, along a driveway
<i>Leucospermum cordifolium</i>	Nodding Pincushion	<ul style="list-style-type: none"> ■ Small Evergreen ■ Neat round symmetrical bush ■ 1,5 x 2m ■ Masses of gorgeous salmon-pink to apricot 'pincushion' flowers from July to December 	<ul style="list-style-type: none"> ■ Plant on sloping bank or in raised rockery for better drainage
<i>Leucospermum cuneiforme</i>	Common Pincushion	<ul style="list-style-type: none"> ■ Large Evergreen ■ Neat compound rounded shrub, often multi-stemmed shrub, but may also form a small tree up to 3m with a single trunk ■ 3 x 3m ■ Showy yellow flowerheads fade to apricot or orange and then finally to red from August to February (almost anytime) ■ Smooth fruits resemble ticks, hence the common name 'Luisiesbos' ■ Leathery leaves overlap neatly are square across the top and are clearly notched 	<ul style="list-style-type: none"> ■ Perfect for informal shrub border or plant a single specimen in the centre of a lawn
<i>Lobostemon fruticosus</i>	Agtdaegeneesbos	<ul style="list-style-type: none"> ■ Small Evergreen ■ Rounded bushy ■ 1 x 1m ■ Beautiful pink or blue bell-shaped flowers from August to November ■ Narrow oval hairy leaves grow all the way up soft-wooded stems 	<ul style="list-style-type: none"> ■ Rockery ■ Mixed border
<i>Melianthus major</i>	Giant Honey Flower	<ul style="list-style-type: none"> ■ Medium Evergreen ■ Drooping ■ 2,5 x 3,5m ■ Long leaves - crushed distinctive and unpleasant smell ■ Rusty-red flower spikes are carried high above the foliage in Spring ■ Inflated 'balloon-like' fruits 	<ul style="list-style-type: none"> ■ Lush-looking ornamental ■ Focal point (plenty of room to spread) ■ Plant alongside a stream or pond
<i>Metalasia muricata</i>	White Bristle Bush	<ul style="list-style-type: none"> ■ Medium Evergreen ■ Much-branched rounded shrub, sometimes small tree ■ 3 x 3m ■ Masses of white, pink, red or purple honey-scented flowers displayed attractively in flattish heads at tips of erect branches anytime, especially spring ■ Fruits are nutlets with bristles 	<ul style="list-style-type: none"> ■ Looks decorative for most of year ■ Plant freely in coastal gardens ■ Set plants out in groups of 3-5 in herbaceous border or position a single plant strategically in a small garden where it can be the centre of attraction when in flower

	SOCIO-CULTURAL VALUE	ECONOMICAL VALUE	ECOLOGICAL VALUE	HABITAT
	<ul style="list-style-type: none"> ■ The sweet fruits are widely eaten in Africa - they are often picked and stored for later use - boiled in milk they taste like milkshake ■ In Botswana people drink the juice of the crushed fruits either fresh or fermented ■ Brusied bark soaked in hot water is traditionally used to dress wounds ■ Rootbark deals with bladder problems ■ A shampoo prepared from crushed bark and regularly used prevents hair going grey 	<ul style="list-style-type: none"> ■ Xhosa make assegai handles and the San make bows from the wood 	<ul style="list-style-type: none"> ■ Birds eat fruit - Speckled Mousebird, Blackeyed and Cape Bulbuls, Crested and Blackcollared Barbets ■ Larvae of the Rufous-winged Elfin and Buff-tipped Skipper eat the leaves 	<ul style="list-style-type: none"> ■ Scrambles in evergreen forests ■ Shrub or small tree on forest margins, in open woodland, coastal bush and wooded hillsides
	<ul style="list-style-type: none"> ■ Popular traditional medicine plants and this species has been used to treat rheumatism 	<ul style="list-style-type: none"> ■ Some areas used as fuels 	<ul style="list-style-type: none"> ■ Attractive to useful insects like bees and butterflies 	<ul style="list-style-type: none"> ■ Rocky places ■ Forest margins
	<ul style="list-style-type: none"> ■ Crushed leaves used as a poultice for sore eyes 		<ul style="list-style-type: none"> ■ Bees, flies and other small insects visit the flowers, providing a source of food for insectivorous birds like the Puffback, Southern Boubou, robins, thrushes, and barbets 	<ul style="list-style-type: none"> ■ Dry thicket ■ Forest and damp places
	<ul style="list-style-type: none"> ■ Traditional remedies prepared from the leaves heal colds, flu, coughs, bronchitis, headaches, asthma, and high blood pressure ■ A leaf and root remedy is used as snakebite ■ A flower and leaf treatment deals with tapeworm ■ The earliest dwellers in South Africa chewed and smoked this plant instead of tobacco ■ Sweet, tasty purple, black or red berries 		<ul style="list-style-type: none"> ■ Nectar-rich flowers entice butterflies, bees and birds, such as the Whitebellied, Black, Yellowbellied, Olive, Collared and Marico Sunbirds ■ Insectivorous birds visit gardens to hunt for insects attracted by the flowers 	<ul style="list-style-type: none"> ■ Amongst rocks in grassland
		<ul style="list-style-type: none"> ■ Excellent cutflowers - last up to 4 weeks 	<ul style="list-style-type: none"> ■ Attractive to birds ■ Attractive to useful insects like bees and butterflies 	<ul style="list-style-type: none"> ■ Most anywhere - South-western Cape
			<ul style="list-style-type: none"> ■ The nectar-rich flowers lure sunbirds, sugarbirds and many others 	<ul style="list-style-type: none"> ■ Variety of habitats from winter rainfall scrub to subtropical coastal dune forest, from the edges of the Karoo to the margins of temperate evergreen forest
	<ul style="list-style-type: none"> ■ Popular traditional medicine plant ■ Leaves fried in sweet oil, pulped leaves and leaf decoctions are all old Cape remedies for ringworm, sores, ulcers, burns and wounds ■ The name 'Agtdaegeneesbos' refers to the fact that it is supposed to be able to heal all conditions within 8 days 	<ul style="list-style-type: none"> ■ Small Evergreen ■ Neat round symmetrical bush ■ 1,5 x 2m ■ Masses of gorgeous salmon-pink to apricot 'pincushion' flowers from July to December 	<ul style="list-style-type: none"> ■ Attractive to useful insects like bees and butterflies 	<ul style="list-style-type: none"> ■ Common in South-western Cape
	<ul style="list-style-type: none"> ■ Various leaf remedies are traditionally used to treat sores, bruises, septic wounds, ringworm, backache and rheumatism ■ Dried powdered leaves are placed directly on open wounds, burns and sores to relieve pain, retract the wound and speed up healing ■ Root infusions are traditionally used to treat cancer ■ Poisonous (incorrect usage) 		<ul style="list-style-type: none"> ■ Larvae of the Foxtrot Copper feed on this plant ■ Invasive, may sucker and become a nuisance if not controlled 	<ul style="list-style-type: none"> ■ Riverbanks and stream banks
	<ul style="list-style-type: none"> ■ In Lesotho a tea is prepared from the dried leaves ■ Used as firewood in many areas 	<ul style="list-style-type: none"> ■ Stock such as sheep browse the foliage when food is scarce 	<ul style="list-style-type: none"> ■ Stabilize coastal dunes ■ Attractive to useful insects like bees and butterflies 	<ul style="list-style-type: none"> ■ Coastal dunes ■ Mountainous areas ■ Rock outcrops ■ Along streams

BOTANICAL NAME	ENGLISH COMMON NAME	DESCRIPTION	DESIGN VALUE
<i>Nymania capensis</i>	Chinese Lanterns	<ul style="list-style-type: none"> ■ Large Evergreen ■ Rounded ■ 4 x 2m ■ Pretty dark-pink bell-shaped flowers from July onwards ■ Ornamental pink-red balloon-like seed-pods that are papery and inflated ■ Tiny leathery leaves 	<ul style="list-style-type: none"> ■ Decorative ■ May survive in container in dry position ■ Imitate natural conditions ■ Plant on steep slope to ensure adequate drainage
<i>Ochna serrulata</i>	Small-leaved Plane	<ul style="list-style-type: none"> ■ Medium Evergreen ■ Round ■ 2,5 x 2,5m ■ Golden-yellow flowers each with a tuft of fluffy stamens in the centre from September to October ■ Flowers followed by shiny black fruits suspended below bright red sepals 	<ul style="list-style-type: none"> ■ Decorative ornamental (pinkish-bronze spring foliage) ■ Suitable for informal mixed border ■ Place strategically amongst rocks ■ Prune to give compact shape as may become a little untidy
<i>Pelargonium cordifolium</i>	Heart-leaved Pelargonium	<ul style="list-style-type: none"> ■ Small Evergreen ■ Robust rounded much-branched bushy ■ 1 x 1m ■ Pink to purple flowers with dark markings displayed well above leaves from June to January with a peak in spring ■ Heart-shaped aromatic leaves 	<ul style="list-style-type: none"> ■ Position in groups of 3-5, either in a shrub border, on a rockery, or at the edge of a pond (not saturated moisture) ■ Line paths, edging along front of flowerbed that contains taller shrubs
<i>Plectranthus fruticosus</i>	Forest Spurflower	<ul style="list-style-type: none"> ■ Small Evergreen ■ Rounded large texture ■ 1 x 1m ■ Masses of attractive pyramidal spikes of pink or bluish-mauve flowers from December to February ■ Heart-shaped leaves tinged purple beneath 	<ul style="list-style-type: none"> ■ Can be grown in containers ■ Mass plant in shade
<i>Plumbago auriculata</i>	Cape Leadwort	<ul style="list-style-type: none"> ■ Medium Evergreen ■ Tendency to scramble ■ 3,5 x 3m ■ Masses of powder blue or white flowers anytime in summer 	<ul style="list-style-type: none"> ■ Allow to scramble up amongst other shrubs or trees, or mass plant it on a sloping bank ■ Attractive informal hedge ■ En masse - groundcover for large garden ■ Plant along fence to form a screen or in an informal border where it can be neatly pruned
<i>Polygala virgata</i>	Purple Broom	<ul style="list-style-type: none"> ■ Medium Evergreen ■ Oval crown, base bare and untidy ■ 2 x 1m ■ Purple spikes of sweetpea-like flowers from July to September 	<ul style="list-style-type: none"> ■ Charming and beautiful shrub - eye-catching ■ Plant behind other shrubs (a bit leggy) and close together in groups of at least 3-5
<i>Protea cynaroides</i>	King Protea	<ul style="list-style-type: none"> ■ Medium Evergreen ■ Rounded compact ■ 1,8 x 2m ■ 30cm flowerhead (red leafstalks) pinkish from May to December 	<ul style="list-style-type: none"> ■ Grown anywhere
<i>Protea grandiceps</i>	Peach Protea	<ul style="list-style-type: none"> ■ Medium Evergreen ■ Neat rounded bush ■ 1,5 x 1,5m ■ Broad grey leaves with red margins ■ Flowerheads are cylindrical and have peachy-pink bracts, tipped with white hairs from August to January 	<ul style="list-style-type: none"> ■ Can live for up to 20 years in garden
<i>Protea magnifica</i>	Bearded Sugarbush	<ul style="list-style-type: none"> ■ Medium Evergreen ■ Spreading rounded shrub, sometimes sprawling ■ 2 x 2m ■ Up to 20cm flowerheads are filled with a mass of soft white hairs, often tipped black or brown in the centre, outer bracts vary in colour from soft pink to a deep rose (June to January) ■ Broad grey-green leaves 	<ul style="list-style-type: none"> ■ Raise in bed - in a rockery or on a very steep slope ■ Thrives high on hot and dry mountains in summer
<i>Rhamnus prinoides</i>	Dogwood	<ul style="list-style-type: none"> ■ Large Evergreen ■ Rounded dense bushy shrub, sometimes scrambles into other plants, or small tree up to 6m ■ 4 x 4m ■ Small greenish flowers from October to December ■ Round Pea-sized fleshy fruits which ripen to purple 	<ul style="list-style-type: none"> ■ Lovely waterside plant or hedge ■ Non-aggressive root system
<i>Rothmannia globosa</i>	Bell Gardenia	<ul style="list-style-type: none"> ■ Large Evergreen ■ Shrub or slender smaller tree up to 6m ■ 6 x 4m ■ Scented creamy-white bell-shaped flowers in early spring (August to November) ■ Large round green fruit (about 2,5cm diameter) become hard woody and brown when ripe 	<ul style="list-style-type: none"> ■ Decorative ornamental shrub ■ Perfect for schools, home gardens, parks and office complex gardens ■ Use in shrub border or plant it alongside a large dam, a stream or pond

	SOCIO-CULTURAL VALUE	ECONOMICAL VALUE	ECOLOGICAL VALUE	HABITAT
		<ul style="list-style-type: none"> ■ Fruit stems - attractive and unusual addition to flower arrangement 	<ul style="list-style-type: none"> ■ Flowers attract sunbirds and honeybees 	<ul style="list-style-type: none"> ■ Hot dry areas
	<ul style="list-style-type: none"> ■ A root decoction is traditionally used by the Zulus to treat children with bone diseases 		<ul style="list-style-type: none"> ■ Fruit-eating birds are lured by the fleshy fruits ■ Larvae of the One Spot Redwing moth feed on Ochna species 	<ul style="list-style-type: none"> ■ Forest margins ■ Rocky hill slopes
			<ul style="list-style-type: none"> ■ Flowers attract many pollinating insects, such as bees 	<ul style="list-style-type: none"> ■ Moist places on forest margins, on hillsides and on riverbanks
	<ul style="list-style-type: none"> ■ Stems rubbed on windowsills repel flies 		<ul style="list-style-type: none"> ■ Larvae of the Gaudy Commodore and Garden Inspector butterfly feed on this plant 	<ul style="list-style-type: none"> ■ Forests on the mist belt
	<ul style="list-style-type: none"> ■ Traditional remedies prepared from the roots or leaves are used to relieve headaches, treat fractures and wounds, and to remove warts 		<ul style="list-style-type: none"> ■ Butterflies are constant visitors in warmer months ■ Larvae of the Common and Short-toothed Blue butterfly feed on this plant 	<ul style="list-style-type: none"> ■ Scrub ■ Thicket ■ Valley bushveld
	<ul style="list-style-type: none"> ■ Traditional remedies prepared from the leaves and stems are used as blood purifiers 	<ul style="list-style-type: none"> ■ Flowers last in flower arrangement 	<ul style="list-style-type: none"> ■ Leaves are heavily browsed ■ Bees pollinate the flowers 	<ul style="list-style-type: none"> ■ Grassland and forest margins
	<ul style="list-style-type: none"> ■ Cultural value - the Protea used as a South African symbol 	<ul style="list-style-type: none"> ■ The flower is an important export in the cutflower trade 	<ul style="list-style-type: none"> ■ Flowers attract sunbirds (Greater Doublecollared Sunbird) and sugarbirds (Cape Sugarbird) ■ The Protea Canary eats the seeds ■ Larvae of the Orangebanded protea butterfly and Protea Scarlet butterfly feed on this protea 	<ul style="list-style-type: none"> ■ Mountain ranges ■ Grows right at the coast and high up in mountains (up to 1500m)
	<ul style="list-style-type: none"> ■ Cultural value - the Protea used as a South African symbol 		<ul style="list-style-type: none"> ■ Protea flowers attract sunbirds (Greater Doublecollared Sunbirds) and sugarbirds (Cape Sugarbirds) ■ The Protea Canary eats the seeds 	<ul style="list-style-type: none"> ■ Coastal mountain ranges ■ Usually confined to the summits and uppermost slopes (between 1200 and 1700m)
	<ul style="list-style-type: none"> ■ Cultural value - the Protea used as a South African symbol 		<ul style="list-style-type: none"> ■ Protea Canary eats the seeds 	<ul style="list-style-type: none"> ■ Mountains encountered at elevations of between 1200 and 2700m ■ Favours dry exposed sites which are hot in summer and cold in winter
	<ul style="list-style-type: none"> ■ A root decoction is traditionally used to deal with pneumonia ■ A paste from the green leaves is applied to sprains ■ In Ethiopia leaves are used as stimulants in wines and beers 	<ul style="list-style-type: none"> ■ Hard heavy white wood is suitable only for small articles, such as walking sticks ■ Parts of the plant are used as protection against lightning 	<ul style="list-style-type: none"> ■ Flowers attract insects such as bees, and birds ■ Starlings, bulbuls and barbets are attracted by the fruit ■ Larvae of the Forest-king Charaxes and Pine Tree Emperor moth feed on the plant 	<ul style="list-style-type: none"> ■ Margins of evergreen forest ■ Along riverbanks ■ Riverine bush
		<ul style="list-style-type: none"> ■ The pale grey wood is hard and heavy, but too small to be of any value 	<ul style="list-style-type: none"> ■ Fruit eaten by monkeys ■ Speckled flowers attract carpenter bees 	<ul style="list-style-type: none"> ■ Coastal and dune bush ■ Along riverbanks ■ Margins of evergreen forest

BOTANICAL NAME	ENGLISH COMMON NAME	DESCRIPTION	DESIGN VALUE
<i>Tecoma capensis</i>	Cape Honeysuckle	<ul style="list-style-type: none"> ■ Medium Evergreen ■ Yellow-flowered form is neater, less sprawling ■ 2-3m x variable ■ Spikes of lovely yellow, orange, red or salmon trumpet-shaped flowers (rich in nectar) in spring and autumn 	<ul style="list-style-type: none"> ■ Excellent for bird garden ■ Tendency to spread and scramble - prune to keep neat ■ Plant alongside Plumbagos ■ Plant it singly or in groups of three in a mixed border, on a golf course, or in large numbers to form an attractive informal hedge ■ It can be allowed to scramble into surrounding trees or shrubs to show itself off to advantage
GROUNDCOVERS			
<i>Adiantum capillus-veneris</i>	Maidenhair Fern	<ul style="list-style-type: none"> ■ Delicate fern with flat heart-shaped leaflets carried on wiry black stems ■ 30 x 30cm 	<ul style="list-style-type: none"> ■ Useful plant for water garden - plant in protected area near a stream or pond ■ Use in window boxes or large containers
<i>Agapanthus africanus</i>	Dwarf Agapanthus	<ul style="list-style-type: none"> ■ Clumps of strap-shaped leaves ■ Rounded heads of blue or white tubular flowers displayed on stalks (45-55cm) from December to March ■ 35 x 35cm 	<ul style="list-style-type: none"> ■ Mass plant under trees ■ Steep banks ■ Containers ■ In front of shrubs as border
<i>Agapanthus praecox</i>	Agapanthus	<ul style="list-style-type: none"> ■ Clumps of strap-shaped leaves ■ Large rounded heads of lovely blue or white tubular flowers that are displayed on tall stalks (1-1,2m) ■ 50 x 60cm 	<ul style="list-style-type: none"> ■ Mass plant under trees ■ Steep banks to hold the soil ■ Large containers or planter boxes ■ Along front of shrub border ■ Popular with landscapers
<i>Aloe striata</i>	Coral Aloe	<ul style="list-style-type: none"> ■ Clump of stiff succulent leaves ■ Boat-shaped blue- to grey-green succulent leaves that are smooth, flat and broad; spineless margins have reddish edges ■ Branched flower stalks 1m tall of pretty pink-red to bright orange tubular waxy flowers from July to October ■ 30 x 50cm 	<ul style="list-style-type: none"> ■ Spectacular colour display in winter ■ Tough and adapts to difficult conditions
<i>Arctotheca calendula</i>	Cape marigold	<ul style="list-style-type: none"> ■ Creeping and climbing plant ■ Leaves are green above and grey below ■ Pretty yellow daisies anytime in the year ■ 10 x 40cm 	<ul style="list-style-type: none"> ■ Excellent groundcover and hardy ■ Large area to be covered in a short time ■ Plant on sloping embankments which are not too steep ■ Use as border in front of shrubs
<i>Aristea ecklonii</i>	Blue Stars	<ul style="list-style-type: none"> ■ Deciduous to evergreen clumped plant with strap-shaped leaves ■ Sea of dainty flowers that creates a beautiful splash of blue-mauve from October to December ■ 50 x 25cm 	<ul style="list-style-type: none"> ■ Excellent groundcover for shady bed
<i>Bulbine frutescens</i>	Stalked Bulbine	<ul style="list-style-type: none"> ■ Basal clump of strap-shaped succulent grey-green leaves ■ Star-shaped yellow or orange flowers from September to June ■ Pretty yellow daisies anytime in the year ■ 30 x 40cm 	<ul style="list-style-type: none"> ■ Mass plant ■ Widely used by landscapers ■ Combines well with blue Agapanthus ■ 10 x 40cm
<i>Clivia miniata</i>	Bush Lily	<ul style="list-style-type: none"> ■ Dark green strap-shaped leaves ■ Showy rounded clusters of bright-orange trumpet-shaped flowers in spring ■ 45 x 60cm 	<ul style="list-style-type: none"> ■ Plant near a shady pond or stream, under large trees or in large containers or tubs
<i>Cotyledon orbiculata</i>	Pig's Ears	<ul style="list-style-type: none"> ■ Basal clump of roundish succulent grey-green leaves, each with a red margin ■ Orange-red bell-shaped flowers are carried at the top of a longish stalk (75-90cm) from August to September ■ 30 x 45cm 	<ul style="list-style-type: none"> ■ Excellent plant for rockery and container
<i>Crassula multicava</i>	Fairy Crassula	<ul style="list-style-type: none"> ■ Rounded ■ Misty mass of tiny starry pink flowers are displayed in large heads above attractive rounded succulent leaves (from July to September) ■ 20 x 30cm 	<ul style="list-style-type: none"> ■ Plant on damp shady rockeries
<i>Crocsmia aurea</i>	Valentine Flower	<ul style="list-style-type: none"> ■ Deciduous - clumps of strap-like leaves ■ Stunning sprays of brilliant-orange star-shaped flowers are displayed on tall, somewhat drooping stalks (1-1,2m) from February to April ■ 95 x 30cm 	<ul style="list-style-type: none"> ■ Mass plant
<i>Drosanthemum speciosum</i>	Red Ice-plant	<ul style="list-style-type: none"> ■ Bushy plant ■ Small succulent leaves ■ Beautiful shiny red or orange 'vygie' flowers with pale yellow centres in spring ■ 40 x 60cm 	<ul style="list-style-type: none"> ■ Mass plant in rockery on on bank to form a groundcover ■ Extremely colourful addition to a succulent garden ■ Could be planted in a container

	SOCIO-CULTURAL VALUE	ECONOMICAL VALUE	ECOLOGICAL VALUE	HABITAT
	<ul style="list-style-type: none"> ■ Powdered bark is used for bleeding gums, and is said to relieve pain, fevers and influenza, and to induce sleep 	<ul style="list-style-type: none"> ■ Stock and game browse the leaves 	<ul style="list-style-type: none"> ■ Nectar-rich flowers attract honeybees, butterflies (Pea Blue, Smokey Blue), sunbirds (Collared Black, Marico and Scarletchested) and the Cape Sugarbird 	<ul style="list-style-type: none"> ■ Margins of evergreen forest ■ In bush and scrub in coastal areas and along streams
	<ul style="list-style-type: none"> ■ Leaves traditionally smoked to ease the symptoms of head and chest colds ■ Old European remedy for asthma, coughs and kidney problems ■ Early settlers in Cape also used it for chest complaints and colds 			<ul style="list-style-type: none"> ■ Near moisture ■ Shaded banks ■ Along small perennial streams ■ Cliff faces
	<ul style="list-style-type: none"> ■ Use traditionally as an antenatal and post-natal medicine 	<ul style="list-style-type: none"> ■ Propagation 	<ul style="list-style-type: none"> ■ Attractive to useful insects like bees and butterflies 	<ul style="list-style-type: none"> ■ From sea level up to the mountain tops
	<ul style="list-style-type: none"> ■ Traditional remedies prepared from this plant act as aphrodisiacs and as an antenatal and post-natal treatments to ensure an easy birth and healthy children 	<ul style="list-style-type: none"> ■ Propagation ■ Low maintenance 	<ul style="list-style-type: none"> ■ Flowers attract a variety of insects and insectivorous birds 	<ul style="list-style-type: none"> ■ Grassland and rocky hillsides
			<ul style="list-style-type: none"> ■ Rich in nectar, the pretty flowers attract shimmering sunbirds 	<ul style="list-style-type: none"> ■ Hot dry areas
		<ul style="list-style-type: none"> ■ Sheep are partial to the flowers 	<ul style="list-style-type: none"> ■ Larvae of the Painted Lady butterfly feed on this plant 	<ul style="list-style-type: none"> ■ Sandy, well-drained soil, on sand dunes, stream banks and rocky outcrops
	<ul style="list-style-type: none"> ■ Traditional remedies prepared from this plant are used to deal with coughs, internal sores and venereal disease ■ Regarded as a good luck charm 		<ul style="list-style-type: none"> ■ Excellent for bird gardens ■ Allow natural leaves to form a mulch ■ Insects and other useful creatures that aid decomposition hide in the mulch and end up as birdfood (Cape Robin, Burchell's Coucal and Southern Boubou found scratching around in such area) 	<ul style="list-style-type: none"> ■ Forest margins ■ Along stream banks ■ Grassland and scrub
	<ul style="list-style-type: none"> ■ The clear gel or leaf sap in the leaves (applied as warm poultice) is traditionally used for mosquito bites and to heal cuts, abrasions, burns, wounds, rashes and boils, eczema and cracked lips 		<ul style="list-style-type: none"> ■ Attractive to useful insects like bees and butterflies 	<ul style="list-style-type: none"> ■ Dry, sandy or rocky areas, often on poor soils
	<ul style="list-style-type: none"> ■ Ease childbirth, to treat snakebite and as a painkiller ■ Rhizomes are highly poisonous and usage should be discouraged 	<ul style="list-style-type: none"> ■ Excellent cutflowers for the vase ■ Propagation 	<ul style="list-style-type: none"> ■ Attracts useful insects like bees and butterflies 	<ul style="list-style-type: none"> ■ Partial shade of forests and coastal bush
	<ul style="list-style-type: none"> ■ Excellent plant for rockery or container ■ Corns and planter warts are softened and removed by applying the cut surface of a leaf to them - leaf strips are bandaged to warts ■ Juice is used to treat epilepsy 	<ul style="list-style-type: none"> ■ Sheep and goats feeding on this plant may be poisoned 	<ul style="list-style-type: none"> ■ Larvae of the Natal Opal, Burnished Opal, Cape Black-eye and Common Black-eye butterflies feed on this plant ■ Bright flowers attract sunbirds and bees and provide lovely spring colour 	<ul style="list-style-type: none"> ■ Grassland ■ Rocky koppies
		<ul style="list-style-type: none"> ■ Propagation 	<ul style="list-style-type: none"> ■ Larvae of the Tailed Black-eye butterfly feeds on crassulas 	<ul style="list-style-type: none"> ■ Rocky outcrops in the shade
	<ul style="list-style-type: none"> ■ Corms are traditionally used to treat dysentery 	<ul style="list-style-type: none"> ■ Excellent cutflowers ■ Propagation 	<ul style="list-style-type: none"> ■ Bushpigs eat the corms ■ Birds eat the seeds 	<ul style="list-style-type: none"> ■ Moist shady places in forests
			<ul style="list-style-type: none"> ■ Useful insects like bees and butterflies are attracted to this plant 	<ul style="list-style-type: none"> ■ Rocky dry places

BOTANICAL NAME	ENGLISH COMMON NAME	DESCRIPTION	DESIGN VALUE
<i>Eucomis autumnalis</i>	Pineapple Flower	<ul style="list-style-type: none"> ■ Deciduous ■ Broad wavy soft-textured strap-shaped leaves ■ Yellow-green flowers carried on a spike (60cm tall), at the top of spike (densely packed) is a rosette of leaf-like bracts - the flowers resemble a pineapple, in summer ■ 50 x 50cm 	<ul style="list-style-type: none"> ■ Unusual and attractive groundcover mass planted under trees
<i>Felicia amelloides</i>	Blue Felicia	<ul style="list-style-type: none"> ■ Rounded form - perennial ■ Pretty blue-purple daisy flowers from September to March ■ 60 x 60cm 	<ul style="list-style-type: none"> ■ Mass plant ■ Line edge of shrub border ■ Could be planted in rockery or in a large tub or planter box
<i>Gazania krebsiana</i>	Gazania	<ul style="list-style-type: none"> ■ Basal clump of grey-green leaves ■ Pretty daisy flowers on longish stalks, bright colours with stripes (only open in sun) in spring and summer ■ 25 x 30cm 	<ul style="list-style-type: none"> ■ Unusal and attractive groundcover mass planted under trees
<i>Geranium incanum</i>	Carpet Geranium	<ul style="list-style-type: none"> ■ Creeping ■ Masses of attractive roundish mauve flowers are displayed on silvery leaves from September to May ■ 30 x 30cm 	<ul style="list-style-type: none"> ■ Beautiful free-flowering groundcover - mass plant ■ Overhang a terraced wall or in large container ■ Edging plant - informal border ■ Plant on large sloping banks
<i>Haemanthus albilos</i>	Dappled Snowbrush	<ul style="list-style-type: none"> ■ Deep green low-gloss strap-shaped leaves are broad and speckled with white (very attractive) ■ A 'brush' of white flowers, surrounded by waxy bracts is displayed at the end of a quaintly leaning stalk (about 40cm long) from April to June ■ Bright orange berries ■ 30 x 40cm 	<ul style="list-style-type: none"> ■ Excellent evergreen groundcover for shady areas ■ Always look good ■ Large groups under trees or in big containers, ■ Edge of pathway (in front of Clivias)
<i>Kniphofia praecox</i>	Red-hot Poker	<ul style="list-style-type: none"> ■ Large clumps of strap-shaped leaves ■ Stunning poker-shaped heads composed of bright-orange, closely packed flowerbuds are carried on tall (1,5m) stalks and become yellow as they open in winter ■ 1 x 1m 	<ul style="list-style-type: none"> ■ Looks attractive next to a dam or stream, or in a mixed shrub border
<i>Pelargonium peltatum</i>	Ivy-leaved Pelargonium	<ul style="list-style-type: none"> ■ Climbing scrambling groundcover ■ Ivy-shaped leaves ■ Pink, mauve or white flowers from August to January ■ 50cm - 2m x variable 	<ul style="list-style-type: none"> ■ Allow to scramble up into trees or cascade over a terraced wall, or over edge of a large container ■ Groundcover under large trees or hanging basket
<i>Plectranthus verticillatus</i>	Money Plant	<ul style="list-style-type: none"> ■ Glossy dark-green semi-succulent foliage tinged with maroon ■ Creeping ■ Tubular white flowers with purple markings ■ 20 x 50cm 	<ul style="list-style-type: none"> ■ Groundcover under trees
<i>Rumohra adiantiformis</i>	Knysna Fern / Seven Week Fern	<ul style="list-style-type: none"> ■ Clumps of leaves - glossy light-green leathery fronds are coarsely toothed and roughly triangular in shape ■ 1 x 1m 	<ul style="list-style-type: none"> ■ Shady spot near a pool or stream
<i>Tulbaghia violacea</i>	Wild Garlic	<ul style="list-style-type: none"> ■ Clumps of strap-like grey-green leaves that smell of garlic when bruised ■ Small rounded heads of pretty mauve flowers are displayed on long stalks (about 40cm tall) in summer ■ 30 x 25cm 	<ul style="list-style-type: none"> ■ Plant in small groups in a rockery ■ Use an edging plant along front of informal border (very striking) or along a pathway ■ Mass plant
<i>Veltheimia bracteata</i>	Bush Lily	<ul style="list-style-type: none"> ■ Glossy deep-green wavy leaves ■ Bulbous that boasts dense spikes of tubular pink-red to deep-red flowers that are carried at the top of long stalks (50cm tall) from July to September ■ 25 x 40cm 	<ul style="list-style-type: none"> ■ Fare well in containers ■ Keep in shade
<i>Watsonia</i> species (<i>Knysnana</i> - soft pink; <i>angusta</i> - orange-red; <i>borbonica</i> - white; <i>pillansii</i> - apricot to pale orange)	Watsonia	<ul style="list-style-type: none"> ■ Clumped leaves ■ Deciduous to evergreen corm-plant ■ Flowering times vary, colours vary from white to pink, orange and mauve) ■ 1,75m x 20cm 	<ul style="list-style-type: none"> ■ Plant in masses for a beautiful groundcover
WATER PLANTS			
<i>Aponogeton distachyos</i>	Cape Pondweed Waterblommetjie	<ul style="list-style-type: none"> ■ Masses of sweetly scented white flowers on short stalks from July to October ■ Broad glossy oblong green leaves that float on water's surface ■ 10 x 95cm 	<ul style="list-style-type: none"> ■ Vigorous and rampant grower ■ Water garden

	SOCIO-CULTURAL VALUE	ECONOMICAL VALUE	ECOLOGICAL VALUE	HABITAT
	<ul style="list-style-type: none"> ■ Facilitates the rapid knitting of lacerated skin ■ A bulb decoction is traditionally used to deal with stomach-ache, back-ache, syphilis, urinary problems and fevers, and is said to assist with recovery after operations 	<ul style="list-style-type: none"> ■ Excellent cutflowers 	<ul style="list-style-type: none"> ■ Useful insects like bees and butterflies are attracted to this plant 	<ul style="list-style-type: none"> ■ Grassland
		<ul style="list-style-type: none"> ■ Propagation 	<ul style="list-style-type: none"> ■ Cheerful flowers lure bees and other insect pollinators that in turn attract insectivorous birds 	<ul style="list-style-type: none"> ■ Often found growing on hillsides in nature
	<ul style="list-style-type: none"> ■ Flowers are eaten raw ■ Felt from the leaves is made into skirts in Lesotho ■ This plant is traditionally used to deal with sterility problems in women, and with sickly babies 		<ul style="list-style-type: none"> ■ Attracts useful insects like bees and butterflies 	<ul style="list-style-type: none"> ■ Dry areas
	<ul style="list-style-type: none"> ■ Leaves have been used as a tea substitute - hence the name 'Bergtree' ■ Leaf infusions are traditionally used to treat menstrual problems, venereal disease and bladder infections 	<ul style="list-style-type: none"> ■ Propagation 	<ul style="list-style-type: none"> ■ Attractive to useful insects like bees and butterflies 	<ul style="list-style-type: none"> ■ Near the Cape Coast
	<ul style="list-style-type: none"> ■ A traditional remedy prepared from this plant is used to deal with coughs 	<ul style="list-style-type: none"> ■ Propagation 	<ul style="list-style-type: none"> ■ Attractive to useful insects like bees and butterflies 	<ul style="list-style-type: none"> ■ Shady places in forest and woodland
			<ul style="list-style-type: none"> ■ Excellent plant for bird garden - nectar-rich flowers attract pollinating insects and sunbirds (Whitebellied and Black Sunbirds) 	<ul style="list-style-type: none"> ■ Marshy places
	<ul style="list-style-type: none"> ■ Sour-tasting leaf sap is used to treat sore throats 	<ul style="list-style-type: none"> ■ Propagation 	<ul style="list-style-type: none"> ■ Larvae of the Water Bronze, Common Geranium Bronze and Dickson's Geranium Bronze butterflies 	<ul style="list-style-type: none"> ■ Coastal or succulent thicket
		<ul style="list-style-type: none"> ■ Propagation 	<ul style="list-style-type: none"> ■ Larvae of the Gaudy Commodore, marsh Commodore, Garden Inspector, Dry Leaf Commodore and Eyed Pansy butterfly feed on Plectranthus ■ Attracts birds - nectar and insects 	<ul style="list-style-type: none"> ■ Wet and dry places in woodland, scrub forest and on forest margins
		<ul style="list-style-type: none"> ■ Attractive foliage lasts well in a vase - flower arrangements - fronds are gathered in the wild and expressly cultivated for this purpose, and are often exported to Europe 		<ul style="list-style-type: none"> ■ Forest margins ■ Sometimes rocky hillsides
	<ul style="list-style-type: none"> ■ Traditionally used to treat asthma, rheumatism, fever, colds and tuberculosis, and is planted as an aphid and snake repellent ■ Green parts are used as spinach 	<ul style="list-style-type: none"> ■ Propagation 	<ul style="list-style-type: none"> ■ Attractive to useful insects like bees and butterflies 	<ul style="list-style-type: none"> ■ Rocky slopes and cliffs in grassland and near rivers
			<ul style="list-style-type: none"> ■ Attracts useful insects like bees and butterflies 	<ul style="list-style-type: none"> ■ Forests ■ Thickets ■ Coastal bush
		<ul style="list-style-type: none"> ■ Popular cut flowers 	<ul style="list-style-type: none"> ■ Attractive to birds - nectar ■ Attractive to useful insects like bees and butterflies 	<ul style="list-style-type: none"> ■ All parts of South Africa - 70 species
	<ul style="list-style-type: none"> ■ Winter dinner ingredient - whole flower cluster with its bracts is edible - Cape waterblommetjebredie ■ Soups, salads and pickles are made from the fresh plant ■ Starchy rhizomes were once eaten by the Khoi and San ■ Sunburn, abrasions and burns are traditionally treated with juice from fresh stems 	<ul style="list-style-type: none"> ■ Propagation ■ Waterblommetjie available in cans ■ Goats and pigs can be fed the stems 	<ul style="list-style-type: none"> ■ Attractive to useful insects like bees and butterflies 	<ul style="list-style-type: none"> ■ Dams and pools in south-western Cape

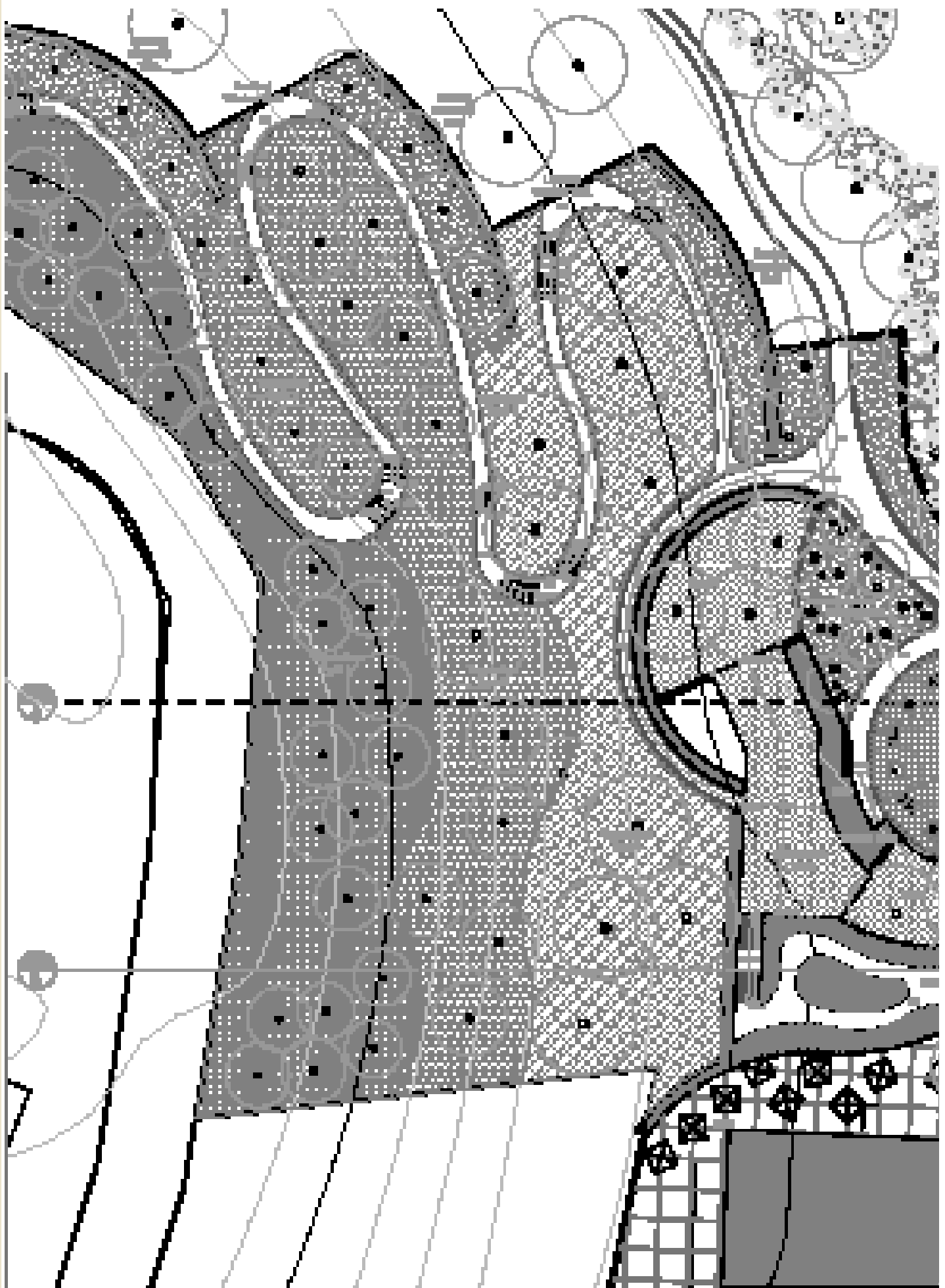
BOTANICAL NAME	ENGLISH COMMON NAME	DESCRIPTION	DESIGN VALUE
<i>Chondropetalum tectorum</i>	Western Cape Thatching Reed	<ul style="list-style-type: none"> ■ Clump of dark-green reed-like stems with a neat yet spiky profile ■ Dark brown flowers appear at the tips of the culms ■ 1,5 x 1,5m 	<ul style="list-style-type: none"> ■ Decorative, ornamental ■ Waterside planting ■ Low-maintenance feature planting - combine well with proteas, pincushions and ericas ■ Looks good amongst rocks
<i>Crinum bulbispermum</i>	Orange River Lily	<ul style="list-style-type: none"> ■ Large lightly scented white to pink drooping lily-like flowers at the top of a stout flowering stalk (1m tall) from September to October; each petal streaked reddish down its middle ■ Clump of long (1m) blue-green strap-shaped leaves ■ Bulbs are poisonous ■ 40 x 95cm 	<ul style="list-style-type: none"> ■ Waterside planting
<i>Crinum macowanii</i>	River Lily	<ul style="list-style-type: none"> ■ Large beautifully scented bell-shaped pale-pink to dark-pink (or white) flowers, sometimes darkly streaked at tip of long stalk (1-1,2m tall) from October to February ■ Clump of strap-shaped green leaves ■ Bulbs are poisonous ■ 40 x 95cm 	<ul style="list-style-type: none"> ■ Plant near water
<i>Cyathea dregei</i>	Tree Fern	<ul style="list-style-type: none"> ■ Distinctive fern with sturdy dark-brown to blackish trunk topped by lush arching light-green fronds ■ 4 x 2m 	<ul style="list-style-type: none"> ■ Appearance lends a luxurious tropical atmosphere to the garden - beautiful fronds and a graceful form reflected in water take one instantly to the depths of a cool and peaceful forest ■ Focal point ■ Situate where some of its roots will be relatively dryish while the others can reach for the permanently damp areas
<i>Cyperus textilis</i>	Basket Grass	<ul style="list-style-type: none"> ■ Clump of bare stems, each topped by a rounded head of narrow spiky leaves ■ 1,5 x 1m 	<ul style="list-style-type: none"> ■ Attractive accent plant for a dam or pond ■ Use alongside a stream, at the base of steps
<i>Gunnera perpensa</i>	River Pumpkin	<ul style="list-style-type: none"> ■ Very large rounded pumpkin-like leaves that arise from ground level and are carried on long reddish stalks ■ Masses of tiny pink-red flowers are carried on a tall spike (about 1m) above the leaves from September to February ■ Small fleshy fruits ■ 60 x 60cm 	<ul style="list-style-type: none"> ■ Extremely attractive foliage plant for water garden ■ Unusual ornamental ■ Try it in a vlei, near a river or next to a large dam where there is an overflow of excess water from time to time ■ Very neat looking
<i>Impatiens hochstetteri</i> subsp. <i>hochstetteri</i>	Wild Impatiens	<ul style="list-style-type: none"> ■ Rounded form ■ Soft oval leaves ■ Small mauve flowers with flat rounded petals in summer ■ 30 x 40cm 	<ul style="list-style-type: none"> ■ Lovely groundcover for dappled shade near a pond or stream ■ Edge of shady pathway or at base of dripping tap
<i>Juncus effusus</i>	Mat-rush	<ul style="list-style-type: none"> ■ Looks like a restio or reed ■ Spiky-looking clumps of smooth bright green culms (stems) ■ Very small inconspicuous flowers ■ Capsules that contain golden-brown seeds ■ 70 x 30cm 	<ul style="list-style-type: none"> ■ Excellent for use in well-watered beds, or in wetlands ■ Popular with landscapers - mass plant ■ Accent plant ■ Perfect for swampy, marshy areas, or for use alongside a stream, pond or large dam
<i>Nymphaea nouchali</i>	Blue Waterlily	<ul style="list-style-type: none"> ■ Showy star-like blue or pinkish flowers are displayed about 5-8cm from September to April ■ Large glossy-green rounded leaves that float on the surface of the water ■ Very small inconspicuous flowers ■ Capsules that contain golden-brown seeds ■ 70 x 30cm 	<ul style="list-style-type: none"> ■ Ponds and wetlands
<i>Nymphoides thunbergiana</i>	Small Yellow Water Lily	<ul style="list-style-type: none"> ■ Dainty starry yellow flowers with feathery-edged petals from October to May ■ Glossy deep-green rounded leaves that float on the surface of the water ■ 8 x 80cm 	<ul style="list-style-type: none"> ■ Ornamental ponds or dams - enhance the setting ■ Soften harsh edges

	SOCIO-CULTURAL VALUE	ECONOMICAL VALUE	ECOLOGICAL VALUE	HABITAT
	<ul style="list-style-type: none"> ■ Thatching of fishermen houses ■ Traditionally associated with thatched roofs of Cape Dutch architecture 	<ul style="list-style-type: none"> ■ Making of brooms ■ Thatching ■ Propagation 	<ul style="list-style-type: none"> ■ Stream bank stabilisation 	<ul style="list-style-type: none"> ■ Typical part of Western Cape Fynbos and occurs from the sandy coastal regions to the foothills of the mountains
	<ul style="list-style-type: none"> ■ Roasted joints traditionally applied to aching joints, and used to deal with backache, rheumatism, septic sores and abscesses ■ Leaf sap is used for earache 	<ul style="list-style-type: none"> ■ Propagation 	<ul style="list-style-type: none"> ■ Attracts useful insects like bees and butterflies 	<ul style="list-style-type: none"> ■ Near rivers, along streams and in seasonal pans (often submerged in spring)
	<ul style="list-style-type: none"> ■ Bulb decoctions are traditionally used for kidney and bladder diseases, itchy rashes, tuberculosis, and rheumatic fever ■ A boiled bulb compress is applied for backache 	<ul style="list-style-type: none"> ■ Propagation 	<ul style="list-style-type: none"> ■ Attracts useful insects like bees and butterflies 	<ul style="list-style-type: none"> ■ Along rivers
			<ul style="list-style-type: none"> ■ Protected plant 	<ul style="list-style-type: none"> ■ Stream banks ■ Grassland on the edge of forests ■ Occasionally in forests
	<ul style="list-style-type: none"> ■ Stems are used to make traditional sleeping mats and for weaving (collecting and winnowing baskets, and grinding mats) 	<ul style="list-style-type: none"> ■ Traditional Nama beehive houses are made from mats - in hot weather the culms shrivel, allowing air through, but in cold wet weather they swell and become nearly waterproof ■ Propagation 	<ul style="list-style-type: none"> ■ Wetland creation 	<ul style="list-style-type: none"> ■ Wet places such as on riverbanks and stream banks in marshy places
	<ul style="list-style-type: none"> ■ Stems and flowerstalks are eaten raw, or cooked after removing the fibrous bits, or made into a beer ■ Roots are eaten after removing the outer skin ■ A traditional remedy prepared from the roots is taken to ease menstrual pain and to tone the uterus during pregnancy ■ In large doses it causes the uterus to contract and expel a retained placenta (cattle and women) ■ A root remedy treats female infertility, another deals with colds, stomach problems and rheumatic fever 	<ul style="list-style-type: none"> ■ Propagation 	<ul style="list-style-type: none"> ■ Clump of bare stems, each topped by a rounded head of narrow spiky leaves ■ 1,5 x 1m 	<ul style="list-style-type: none"> ■ Damp, marshy areas and along stream banks
	<ul style="list-style-type: none"> ■ Traditional remedies prepared from the leaves and stems deal with eczema 	<ul style="list-style-type: none"> ■ Propagation 	<ul style="list-style-type: none"> ■ Larvae of the Silver Striped Hawk, Large Striped Hawk and Balsam Striped Hawk moth feed on this species 	<ul style="list-style-type: none"> ■ Damp shade of forest
	<ul style="list-style-type: none"> ■ Rounded form ■ Soft oval leaves ■ Small mauve flowers with flat rounded petals in summer ■ 30 x 40cm 	<ul style="list-style-type: none"> ■ In Japan - cultivated in paddy fields and the harvested culms are woven into Japanese tatami mats ■ Natal - weaving fibre - items including sleeping and sitting mats, rolled twine, spoon baskets and beer strainers ■ Propagation 	<ul style="list-style-type: none"> ■ Attractive to birds ■ Attractive to useful insects like bees and butterflies ■ Perfect habitats for many types of bird, insect and amphibian 	<ul style="list-style-type: none"> ■ Cosmopolitan - occurring naturally in swamps and streambeds
	<ul style="list-style-type: none"> ■ Tubers collected from swamps and shallows are cooked like potatoes - do not have strong flavour ■ In Namibia peeled tubers are boiled or roasted, and are regarded as a staple food ■ Zimbabwe - eaten raw ■ Other areas - flowerheads and seeds are eaten ■ Extracts of the flower are said to be a stimulant or aphrodisiac in low doses ■ Traditionally powdered roots are used to treat asthma, coughs and colds 	<ul style="list-style-type: none"> ■ Propagation 	<ul style="list-style-type: none"> ■ Lovely scent of these striking flowers fills the air, and they attract beetles, bees and other insects ■ Hippos, baboons and monkeys eat the exposed tubers ■ African and Lesser Jacanas trot over the leaves with their specialised feet looking for insects ■ Purple Gallinule, Pygmy Goose and Wattled Crane eat the fruits 	<ul style="list-style-type: none"> ■ Pools, dams, lakes and rivers
		<ul style="list-style-type: none"> ■ Propagation 	<ul style="list-style-type: none"> ■ Attractive to useful insects like bees and butterflies 	<ul style="list-style-type: none"> ■ Streams, ponds, rivers and pools

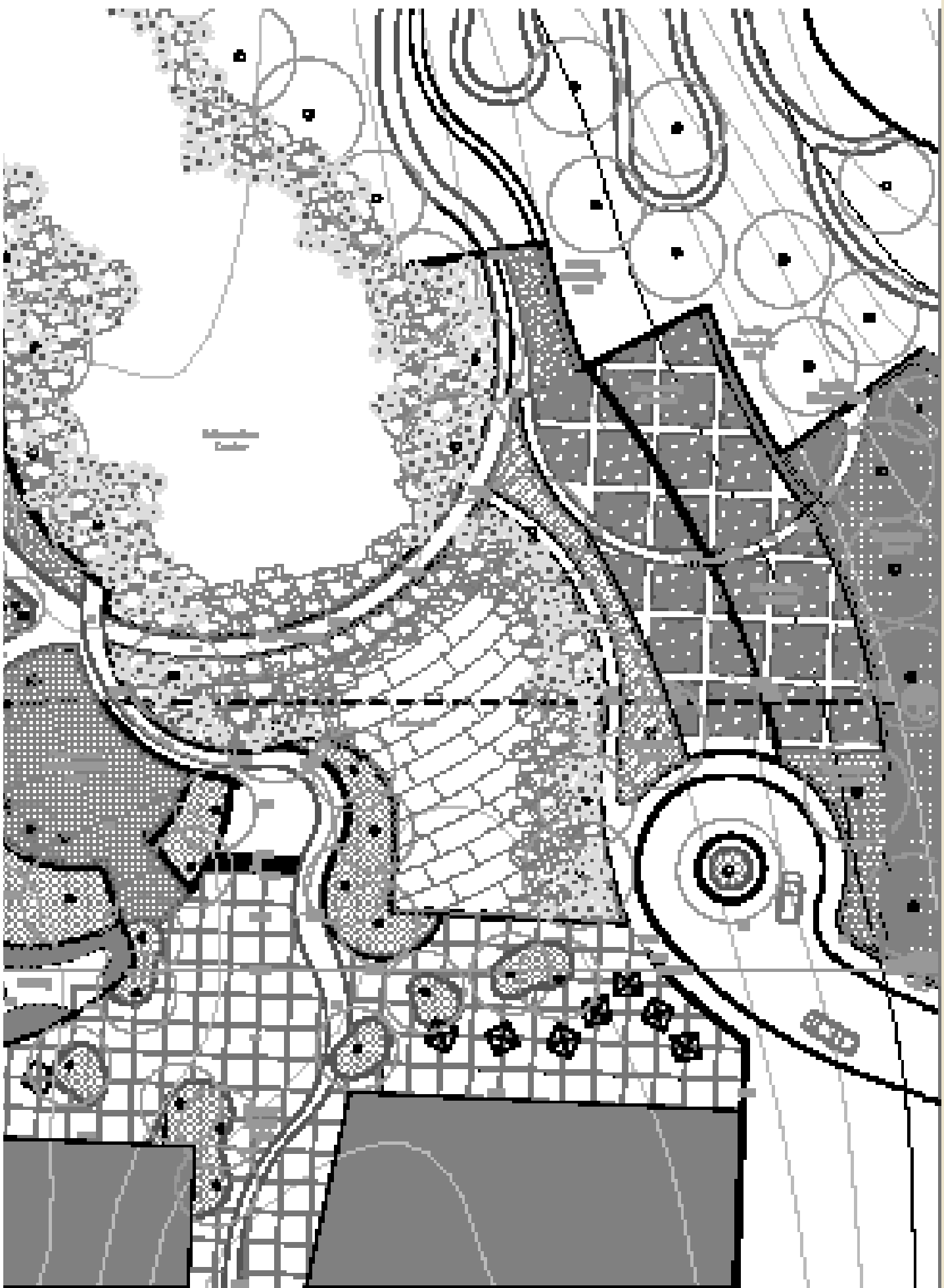
BOTANICAL NAME	ENGLISH COMMON NAME	DESCRIPTION	DESIGN VALUE	
<i>Senecio glastifolius</i>	Waterholly	<ul style="list-style-type: none"> ■ Deep green leathery holly-like leaves ■ Produces masses of large daisy flowers in spring ranging in colour from pinks through to deep mauve from September to October ■ 1 x 1m 	<ul style="list-style-type: none"> ■ Fairly sturdy ■ Plant so that roots can take advantage of water overflow ■ Alongside streams and ponds ■ Plant at back of mixed shrub border 	
<i>Typha capensis</i>	Bulrush	<ul style="list-style-type: none"> ■ Clumps of long greyish strap-shaped leaves ■ Velvety-brown cylindrical inflorescences carried on long slender stalks ■ 2m x 60cm 	<ul style="list-style-type: none"> ■ Focal point in water garden 	
<i>Wachendorfia thyrsiflora</i>	Bloodroot	<ul style="list-style-type: none"> ■ Spikes of deep-yellow starry flowers displayed on tall spikes (1,2 - 1,5m high) from September to November ■ Pleated deep-green strap-shaped leaves ■ 1 x 1m 	<ul style="list-style-type: none"> ■ Should have place in every water garden ■ Focal point and centre of attraction ■ Use alongside gentle flowing stream, or in swampy, marshy places 	
<i>Zantedeschia aethiopica</i>	White Arum Lily	<ul style="list-style-type: none"> ■ Large attractive white flower spathes displayed on tall stems (1,2 - 1,5m) from September to January ■ Flowers develop into a dense mass of small fleshy fruits ■ Clump of lush long-stemmed arrow-shaped leaves ■ 95 x 50cm 	<ul style="list-style-type: none"> ■ Wonderfully adaptable ■ Plant anywhere in garden or water garden ■ Perfect for planting along stream banks, at edges of ponds where there is an overflow of excess water, and in marshy areas 	
CLIMBERS				
<i>Clematis brachiata</i>	Traveller's Joy	<ul style="list-style-type: none"> ■ Masses of fragrant creamy flowers each with a conspicuous tuft of yellow stamens in summer ■ Decorative feathery seedheads ■ Soft green foliage, deciduous ■ 4 x 2m 	<ul style="list-style-type: none"> ■ Vigorous and spreads fast ■ Plant against tree, trellis, fence etc. ■ Needs space 	
<i>Jasminum multipartitum</i>	Starry Wild Jasmine	<ul style="list-style-type: none"> ■ Rounded shrub to a scrambling climber ■ Glossy dark green foliage ■ Masses of jasmine-like flowers (white), fragrant tinted deep-pink below from August to January ■ Small shiny-black fleshy fruits ■ 2-3m x variable 	<ul style="list-style-type: none"> ■ Excellent choice for bird garden ■ Mass plant ■ Train over trellis or other structure 	
<i>Rhoicissus tridentata</i>	Bushman's Grape	<ul style="list-style-type: none"> ■ Rounded shrub to a scrambling climber ■ Glossy dark-green foliage - evergreen to deciduous ■ Scrambles into surrounding vegetation ■ Inconspicuous yellow-green flowers from November to January ■ Reddish fleshy berries - edible but sour ■ 3 x 1,5m 	<ul style="list-style-type: none"> ■ Use against a fence to form a screen ■ Cover trellis or pergola, hanging baskets 	
<i>Senecio macroglossus</i>	Flowering Ivy	<ul style="list-style-type: none"> ■ Scrambling creeper ■ Attractive ivy-like, semi-succulent leaves ■ Pretty lemon-yellow daisy flowers anytime especially in summer ■ 3 x 1,5m 	<ul style="list-style-type: none"> ■ Grows well in container ■ Provide trellis for support ■ Excellent groundcover - scramble over and disguise a large bank or slope that is held in place by rocks 	

	SOCIO-CULTURAL VALUE	ECONOMICAL VALUE	ECOLOGICAL VALUE	HABITAT
			<ul style="list-style-type: none"> ■ Attractive to useful insects like bees and butterflies 	<ul style="list-style-type: none"> ■ Rocky hillsides with fynbos ■ Karroid scrub ■ Stream banks and in marshy ground
	<ul style="list-style-type: none"> ■ The roots and young shoots are edible ■ Dried dehusked rhizomes are beaten to a starch-rich reddish meal - used same way as other meal ■ Decoctions of the rhizome are traditionally used to promote fertility, strengthen labour contractions and to expel the placenta (humans and animals), and increase male impotency and libido ■ Root infusions are used to treat enteritis, kidney and bladder problems, dysentery and venereal diseases 	<ul style="list-style-type: none"> ■ Bulrushes used for thatch, weaving, hand brooms, sitting mats ■ Pillows stuffed with fluffy seeds ■ Propagation 	<ul style="list-style-type: none"> ■ Excellent bird plant - nests (slender leaves and flowerheads - material) 	<ul style="list-style-type: none"> ■ Cosmopolitan plant along streams, edges of dams, in marshes
		<ul style="list-style-type: none"> ■ Propagation 	<ul style="list-style-type: none"> ■ Attractive to useful insects like bees and butterflies 	<ul style="list-style-type: none"> ■ Swampy places along the edges of streams and occasionally in the water
	<ul style="list-style-type: none"> ■ A heated poultice made from the leaves is traditionally used to treat boils, wounds and sores ■ Gout and rheumatic joints are treated in the same way ■ A boiled rhizome and honey mixture is gargled for a sore throat, or swallowed for heartburn and bronchitis 	<ul style="list-style-type: none"> ■ Excellent cutflowers for the vase ■ Propagation ■ The leaves are used to tint wool many shades of yellow 	<ul style="list-style-type: none"> ■ Fruits popular in birds ■ Porcupines and pigs eat the underground tubers 	<ul style="list-style-type: none"> ■ Clumps of long greyish strap-shaped leaves ■ Velvety-brown cylindrical inflorescences carried on long slender stalks ■ 2m x 60cm
	<ul style="list-style-type: none"> ■ Traditional remedies prepared from this plant are used to deal with colds, syphilis, intestinal worms and snakebite ■ Headaches are soothed by drinking a tea made from the leaves 		<ul style="list-style-type: none"> ■ Attractive to useful insects like bees and butterflies 	<ul style="list-style-type: none"> ■ Grassland scrub and open woodland
	<ul style="list-style-type: none"> ■ In famine times people eat the fruits ■ Used to make herb tea and potpourri 	<ul style="list-style-type: none"> ■ Propagation 	<ul style="list-style-type: none"> ■ Flowers attract insects to the garden and insectivorous birds ■ Fruit popular with fruit-eating birds ■ Game browse leaves ■ Larvae of the Cambridge Vagrant butterfly, the Variable Prince, Oleander Hawk, Death's Head Hawk, and King Monkey moth feed on Jasminum species. ■ Hawk moths pollinate the flowers 	<ul style="list-style-type: none"> ■ Woodland, thicket and rocky slopes
	<ul style="list-style-type: none"> ■ A traditional remedy using the tubers tones the uterus during pregnancy ■ Another deals with menstrual cramps and infertility in women ■ Bladder and kidney complaints are treated with this plant 	<ul style="list-style-type: none"> ■ Propagation 	<ul style="list-style-type: none"> ■ Fruit enjoyed by birds ■ Bushpigs, baboons and porcupines eat the tubers (maybe toxic to man) ■ Black Rhino and other game browse the leaves ■ Larvae of the Fervid Tiger, Trimen's False Tiger and Cape Hawk moth feed on plant 	<ul style="list-style-type: none"> ■ Coastal and evergreen forest, forest margins and grassy hillsides
	<ul style="list-style-type: none"> ■ Been cultivated in Europe since 1875 	<ul style="list-style-type: none"> ■ Propagation 	<ul style="list-style-type: none"> ■ Larvae of the White Bear moth feed on this plant 	<ul style="list-style-type: none"> ■ Forest margins, sandy to rocky places

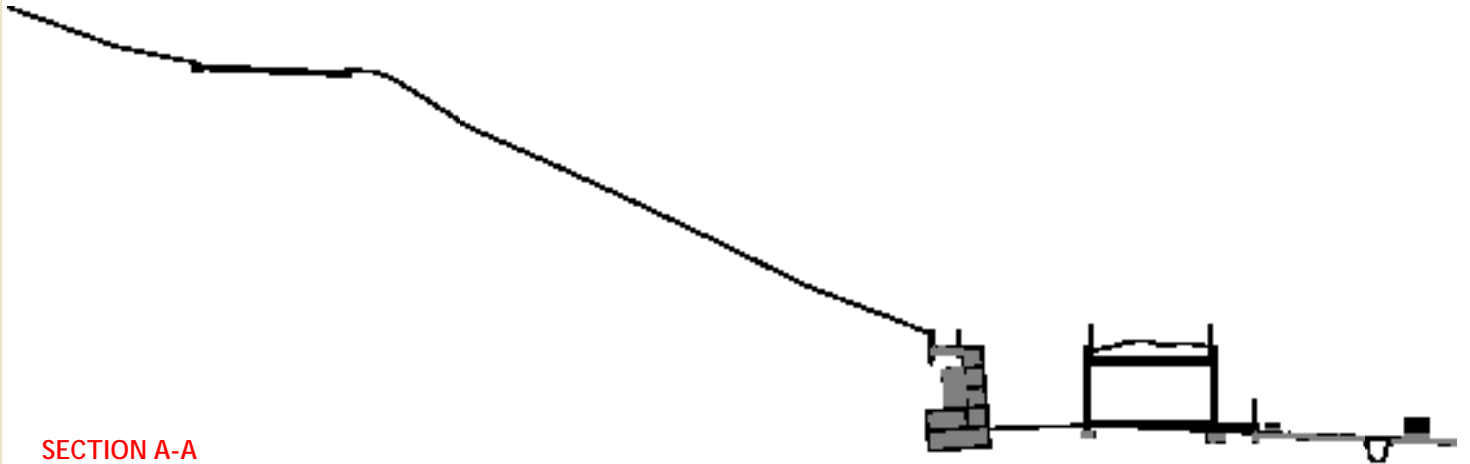
8.2. ENVIRONMENTAL EDUCATION CENTRE CONSTRUCTION PLAN



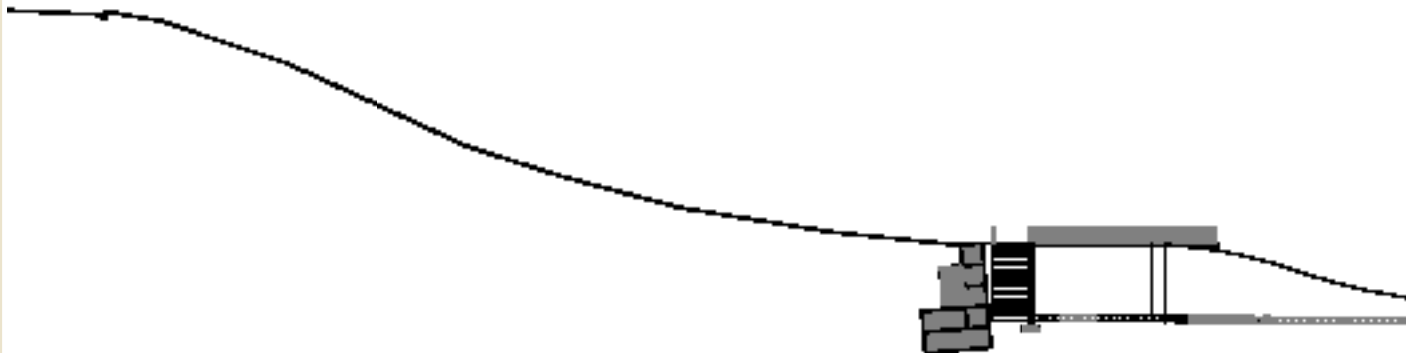
NOT TO SCALE



8.3. ENVIRONMENTAL EDUCATION CENTRE SECTIONS



SECTION A-A
NOT TO SCALE



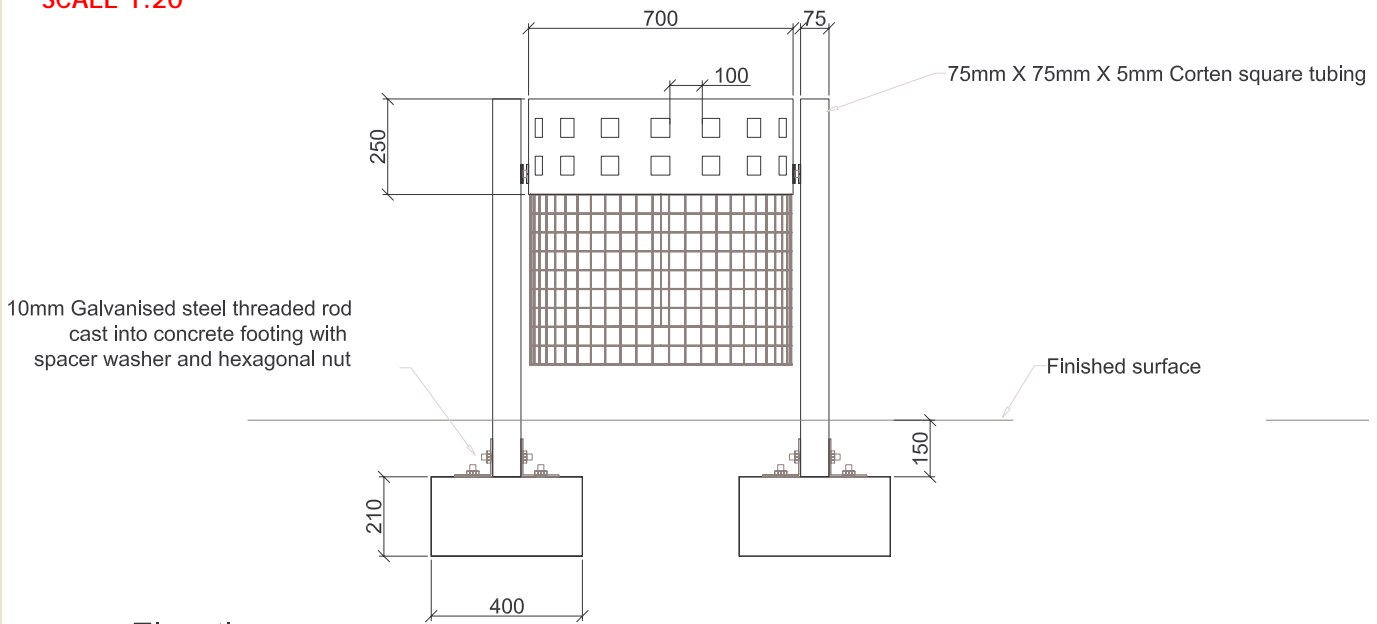
SECTION B-B
NOT TO SCALE



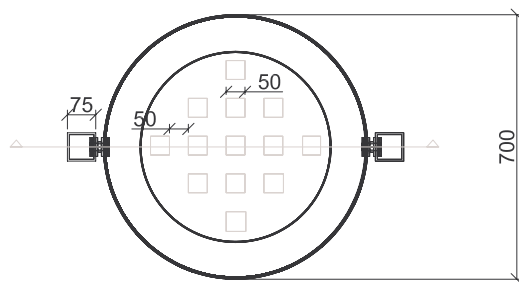
8.4. ENVIRONMENTAL EDUCATION CENTRE DETAILS

8.4.1. SITE FURNITURE

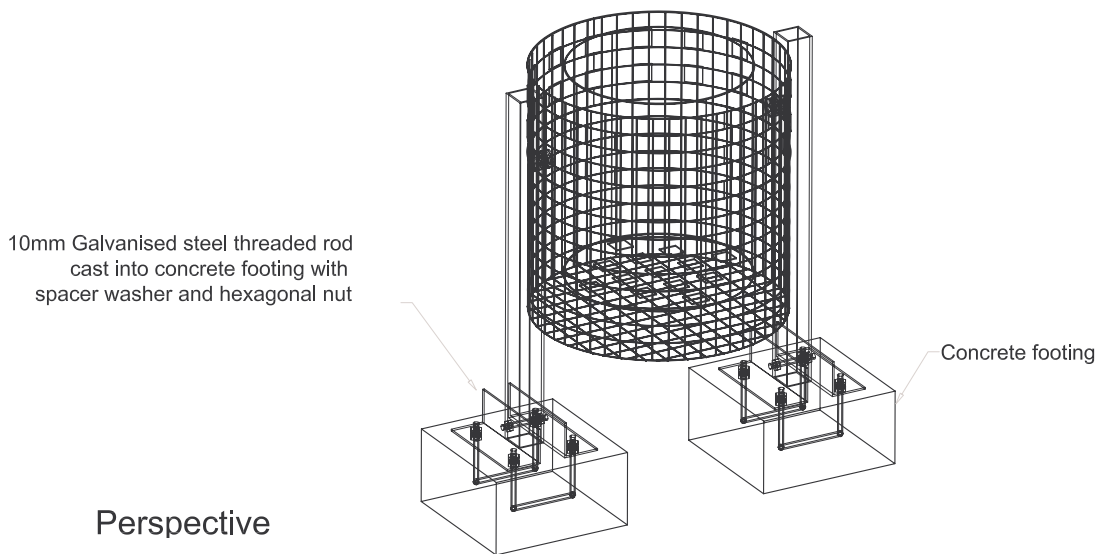
LITTERBIN
SCALE 1:20



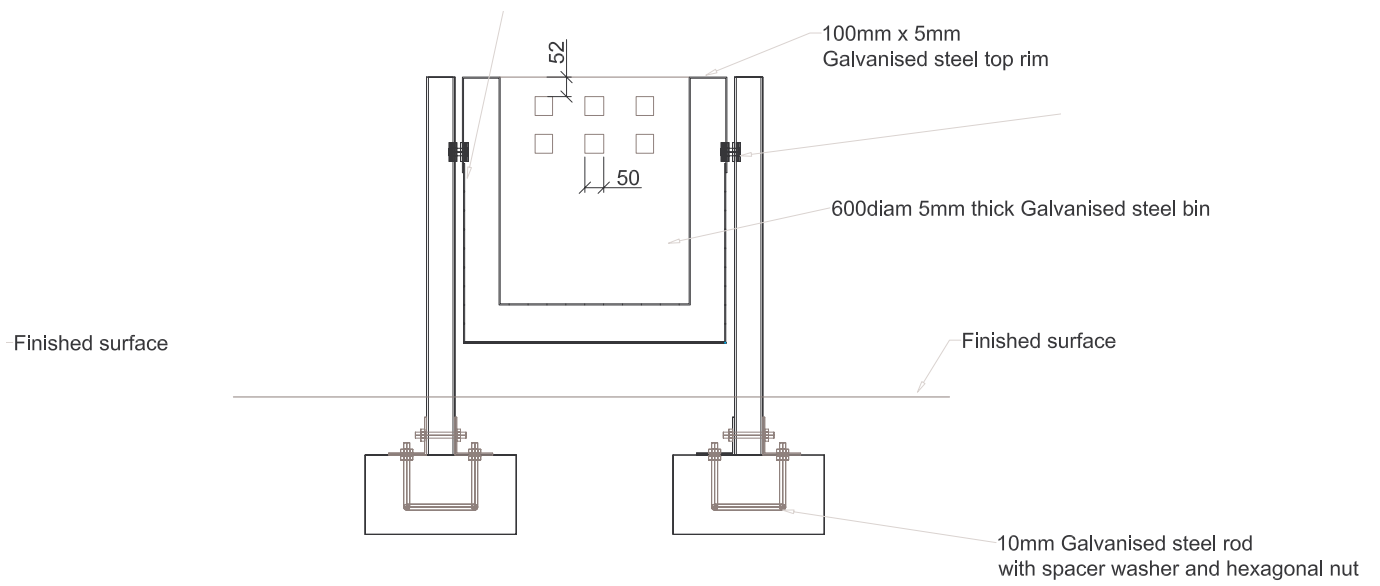
Elevation



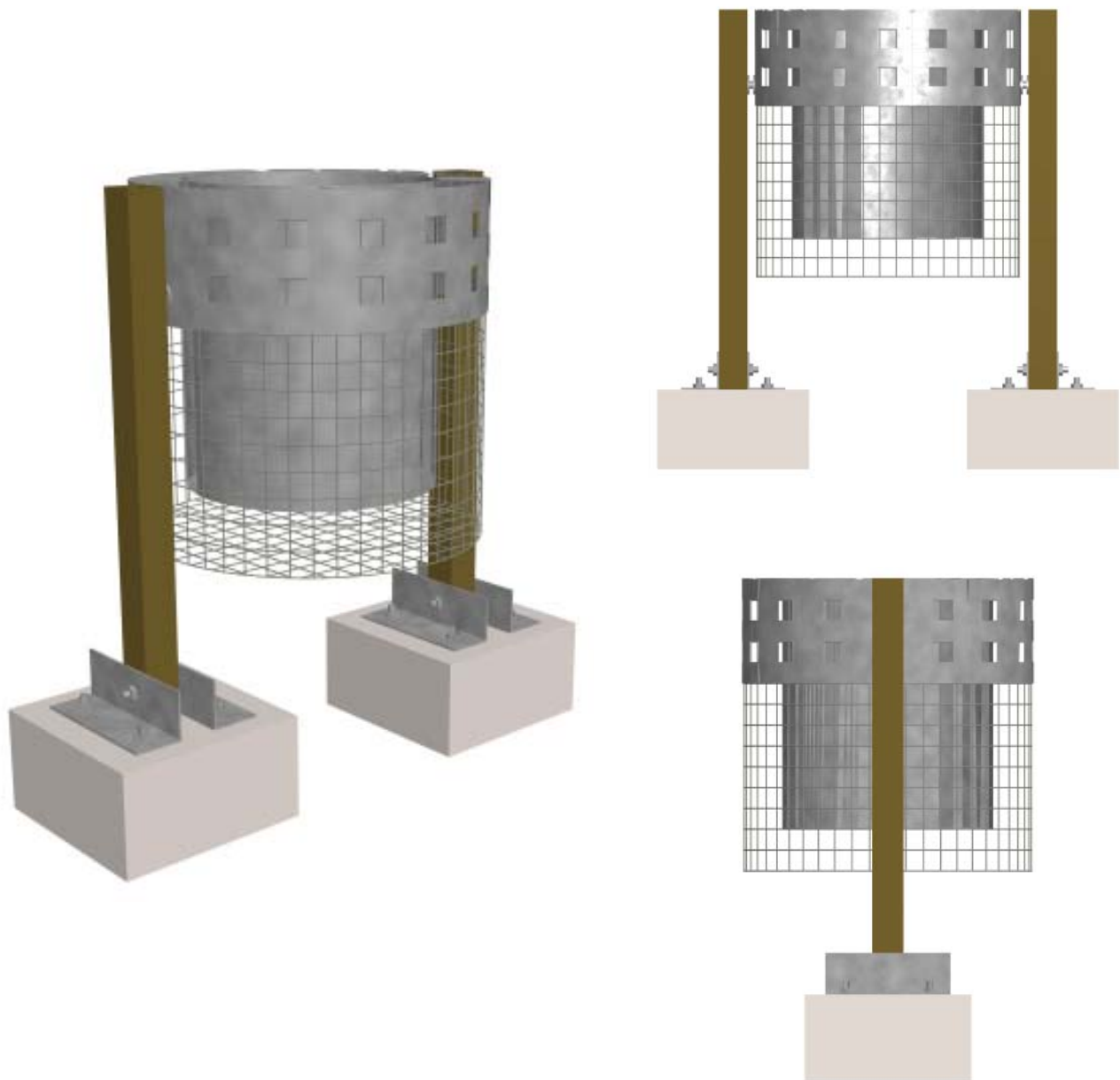
Plan



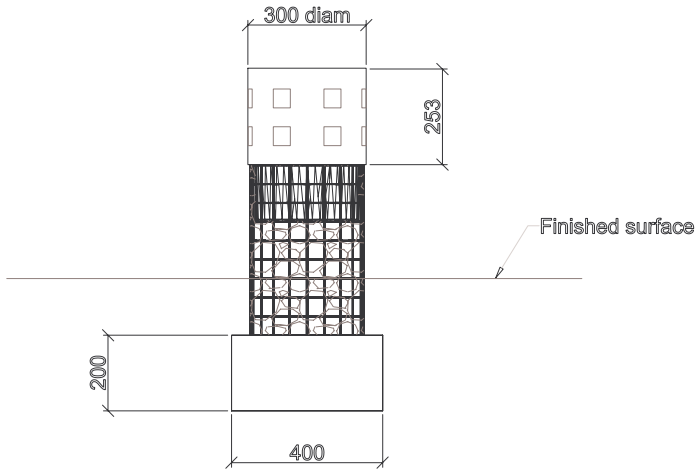
Perspective



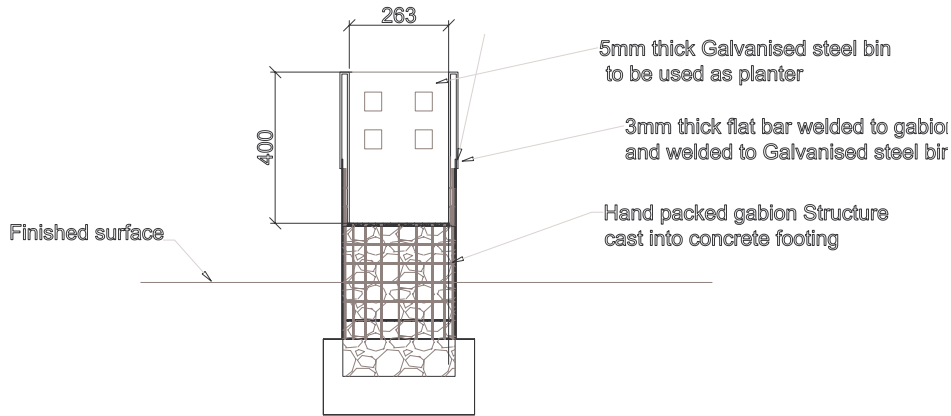
Section



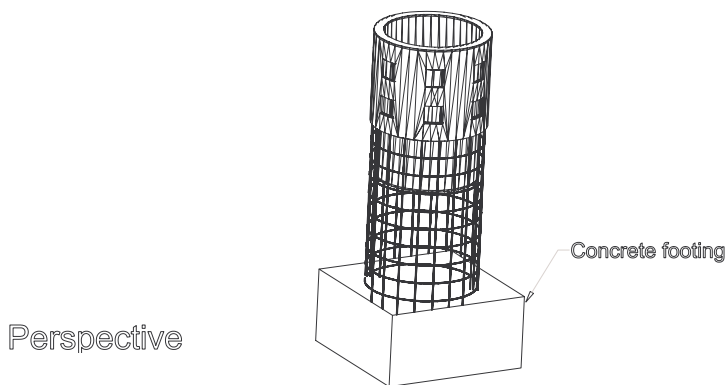
BOLLARD
SCALE 1:20



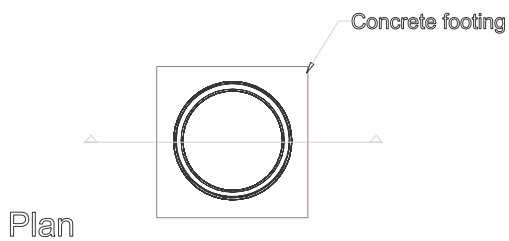
Elevation



Section



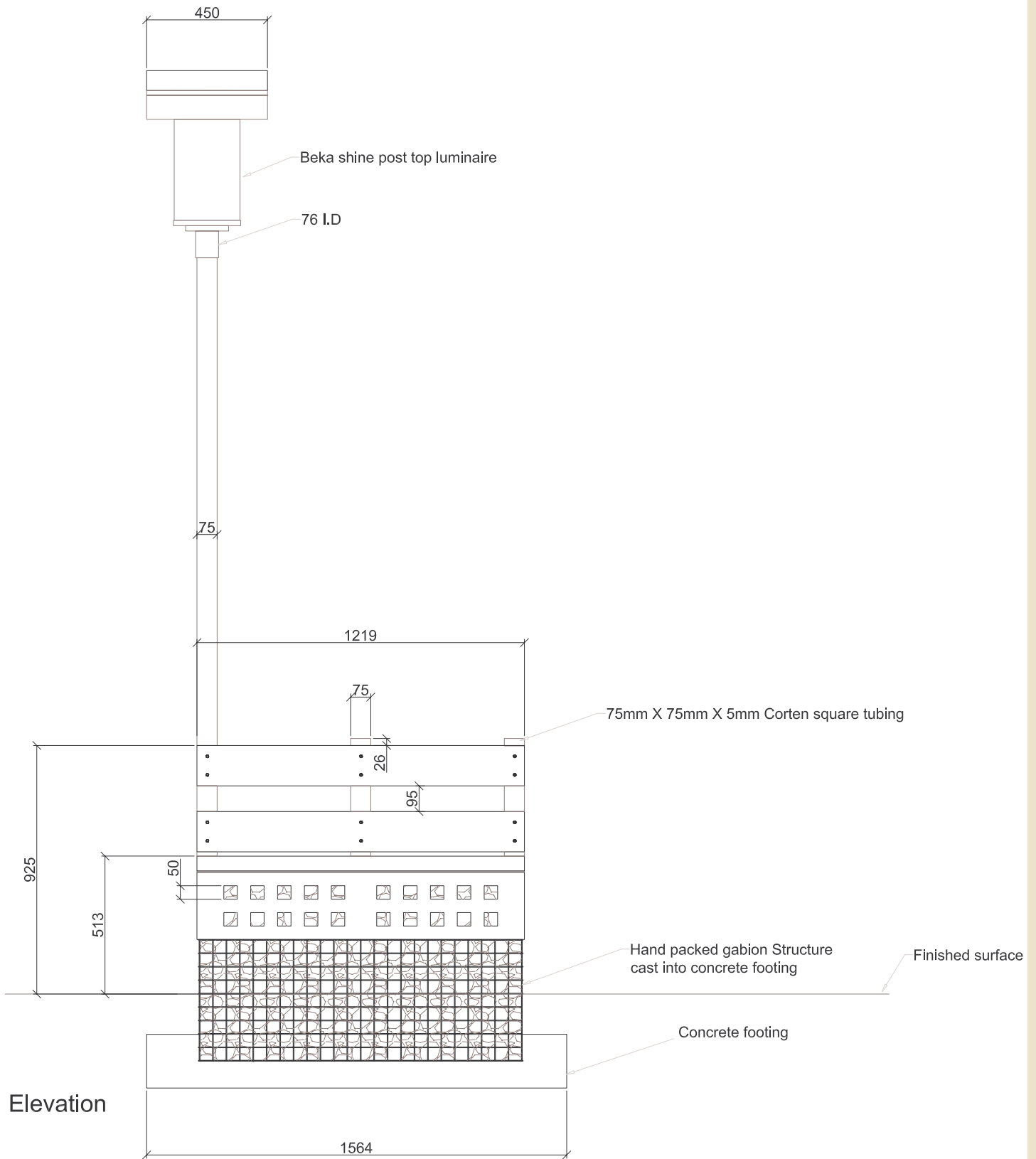
Perspective

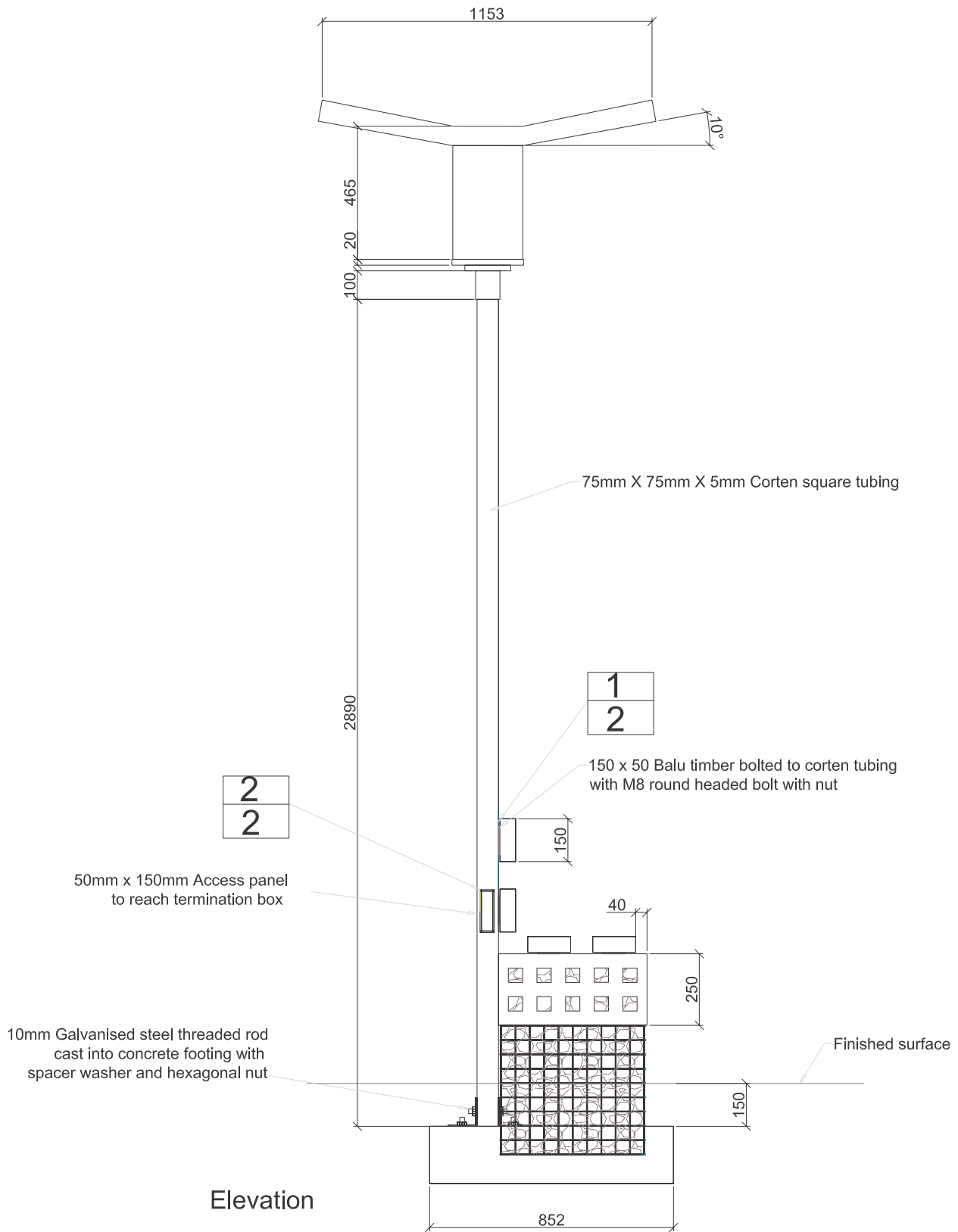


Plan

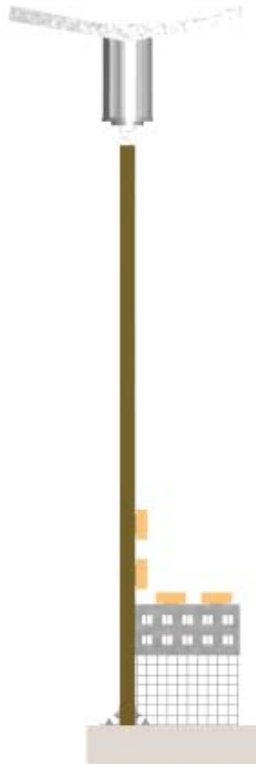
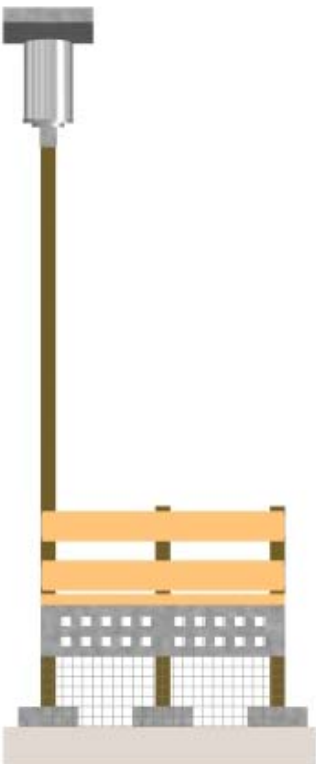
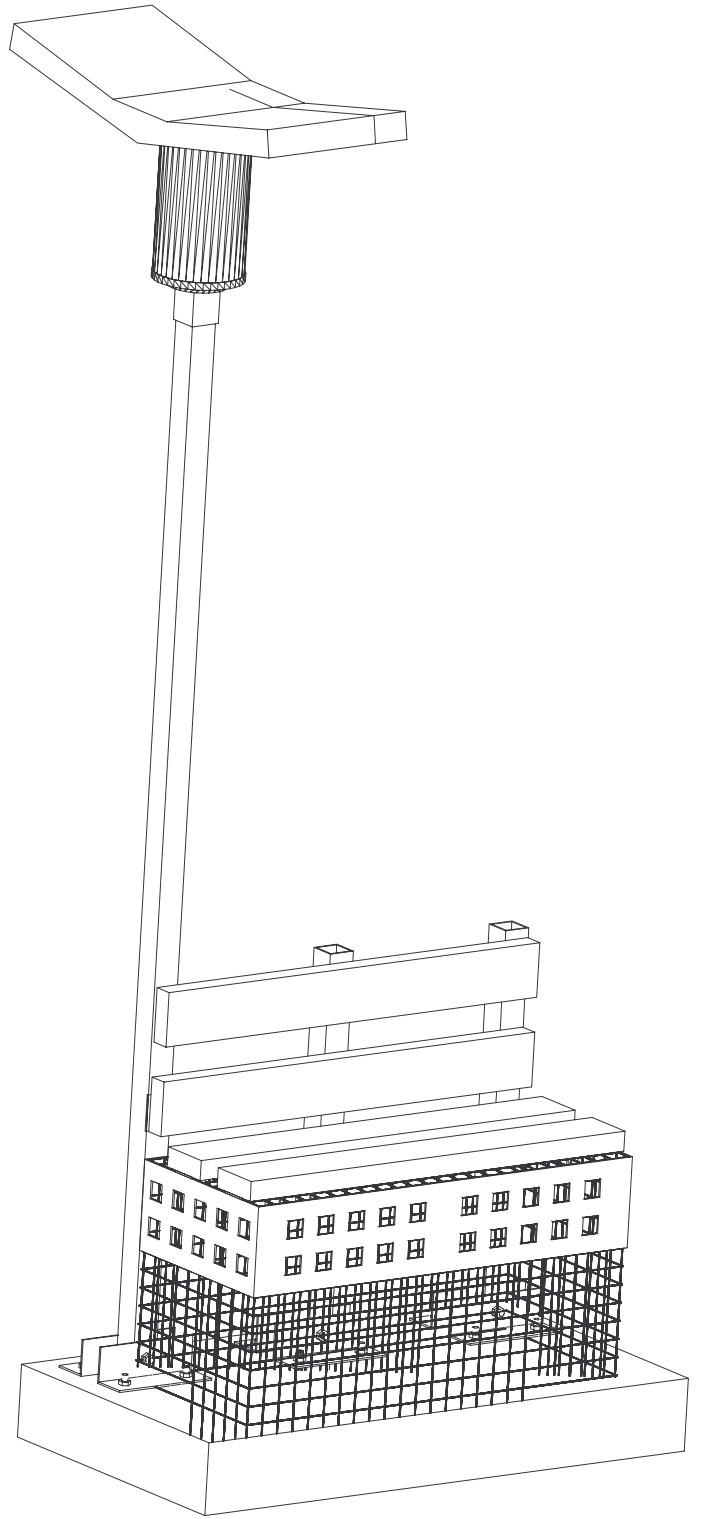


POST-STOP LIGHT AND BENCH
SCALE 1:20





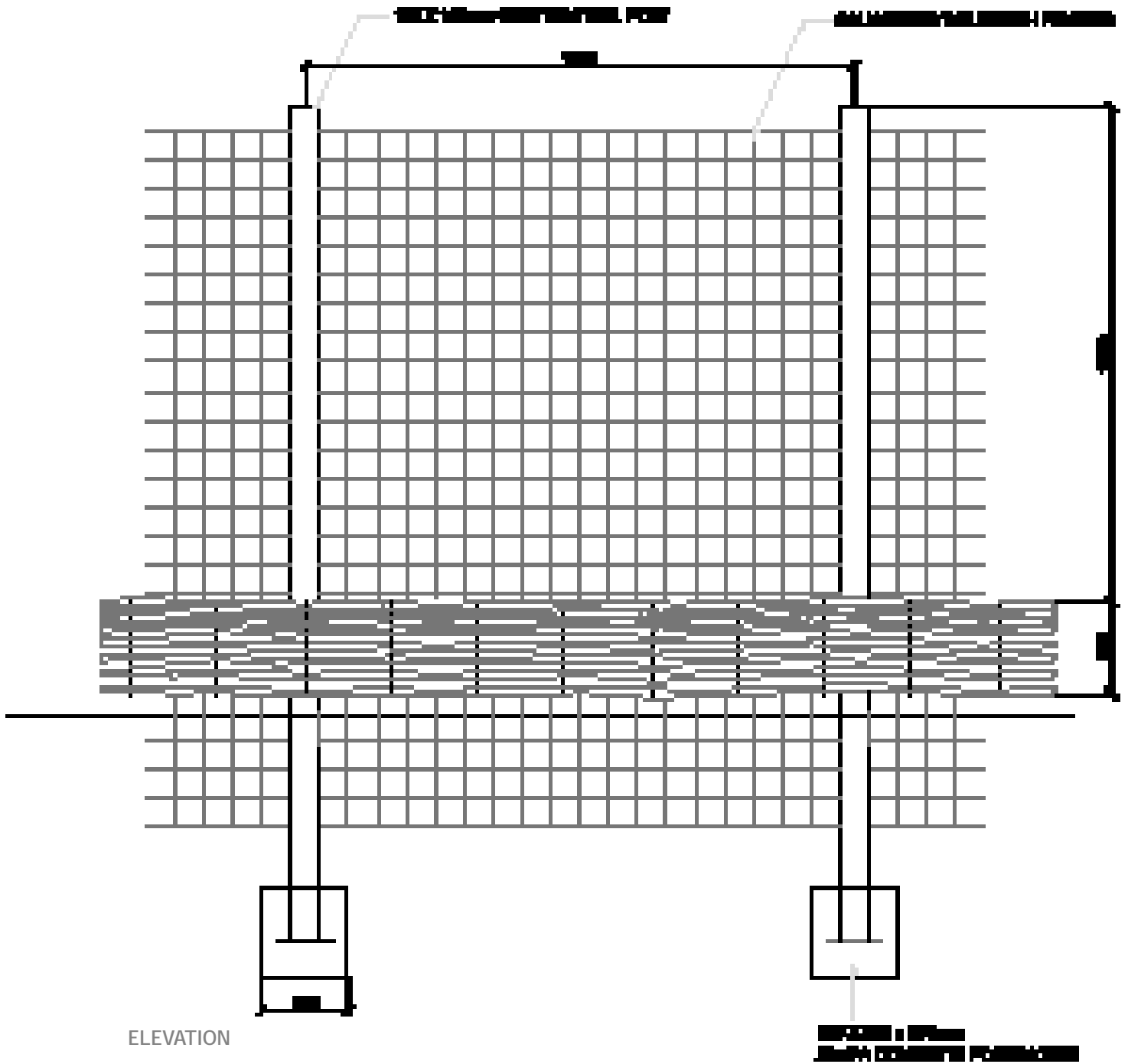
Elevation



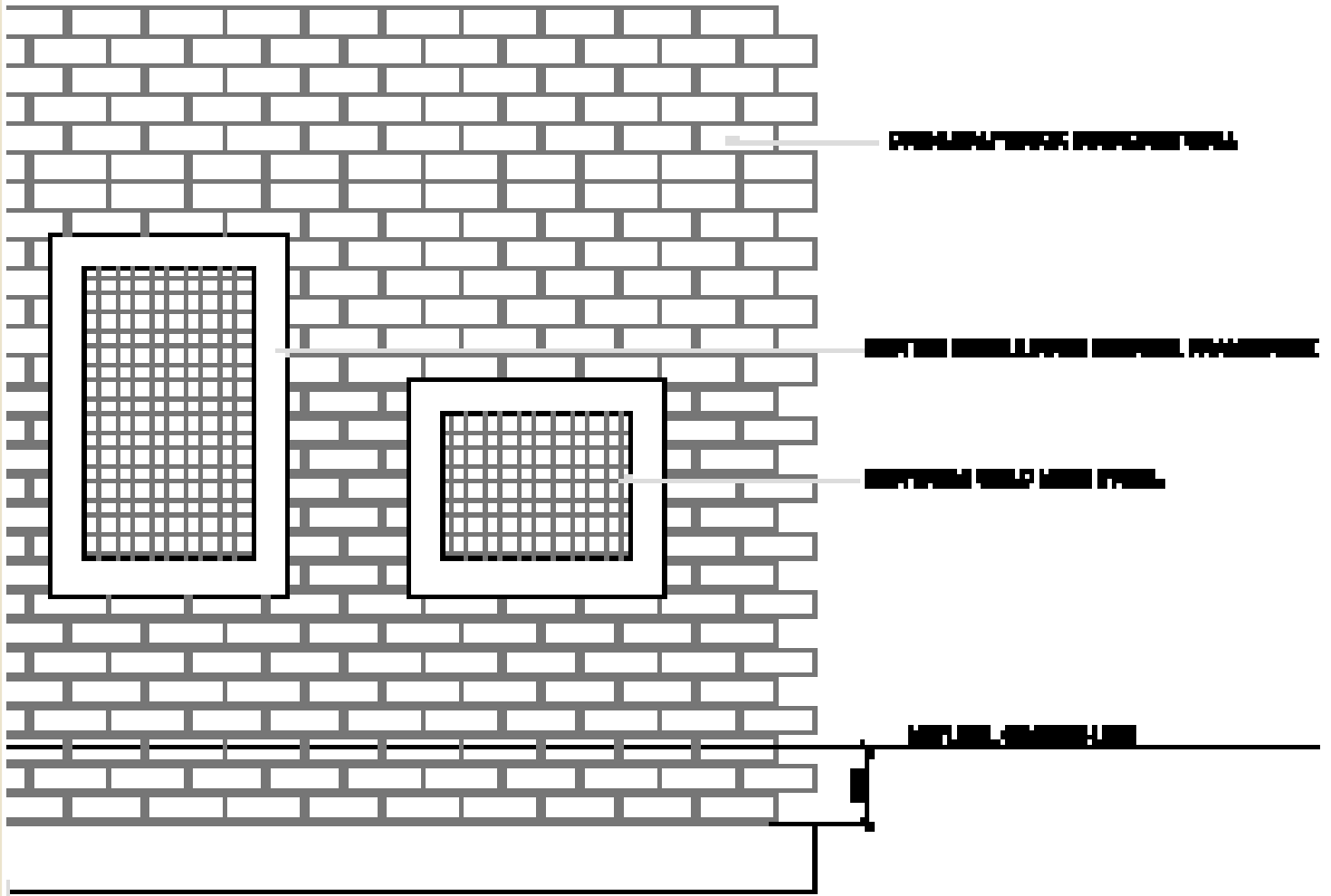
8.4.2. WALLS

GABION-SEATING BOUNDARY WALL
SCALE 1:20

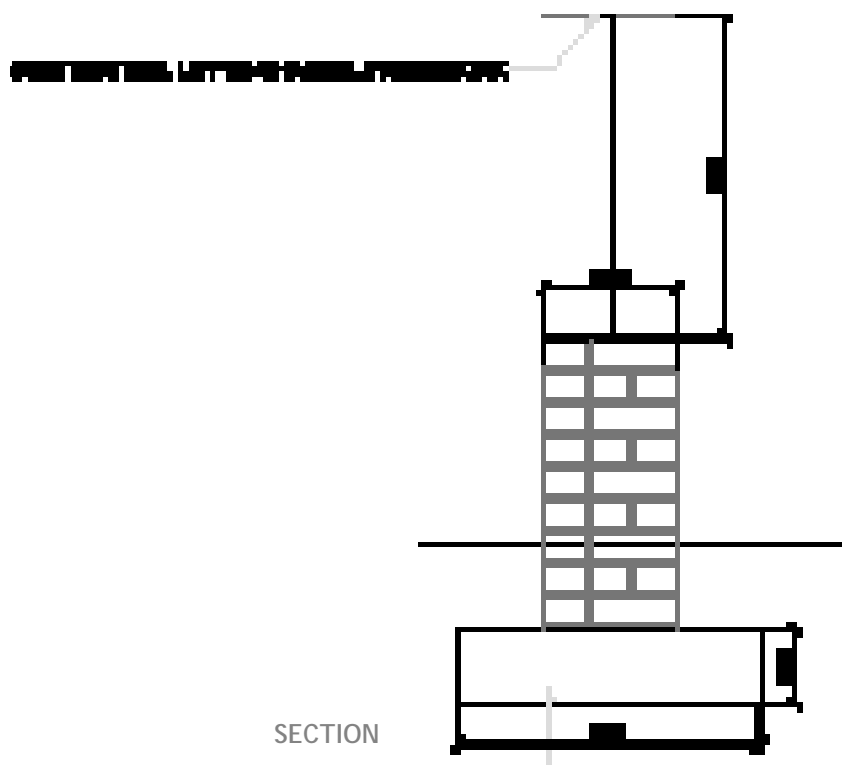




LOOKING WINDOW BOUNDARY WALL
SCALE 1:20

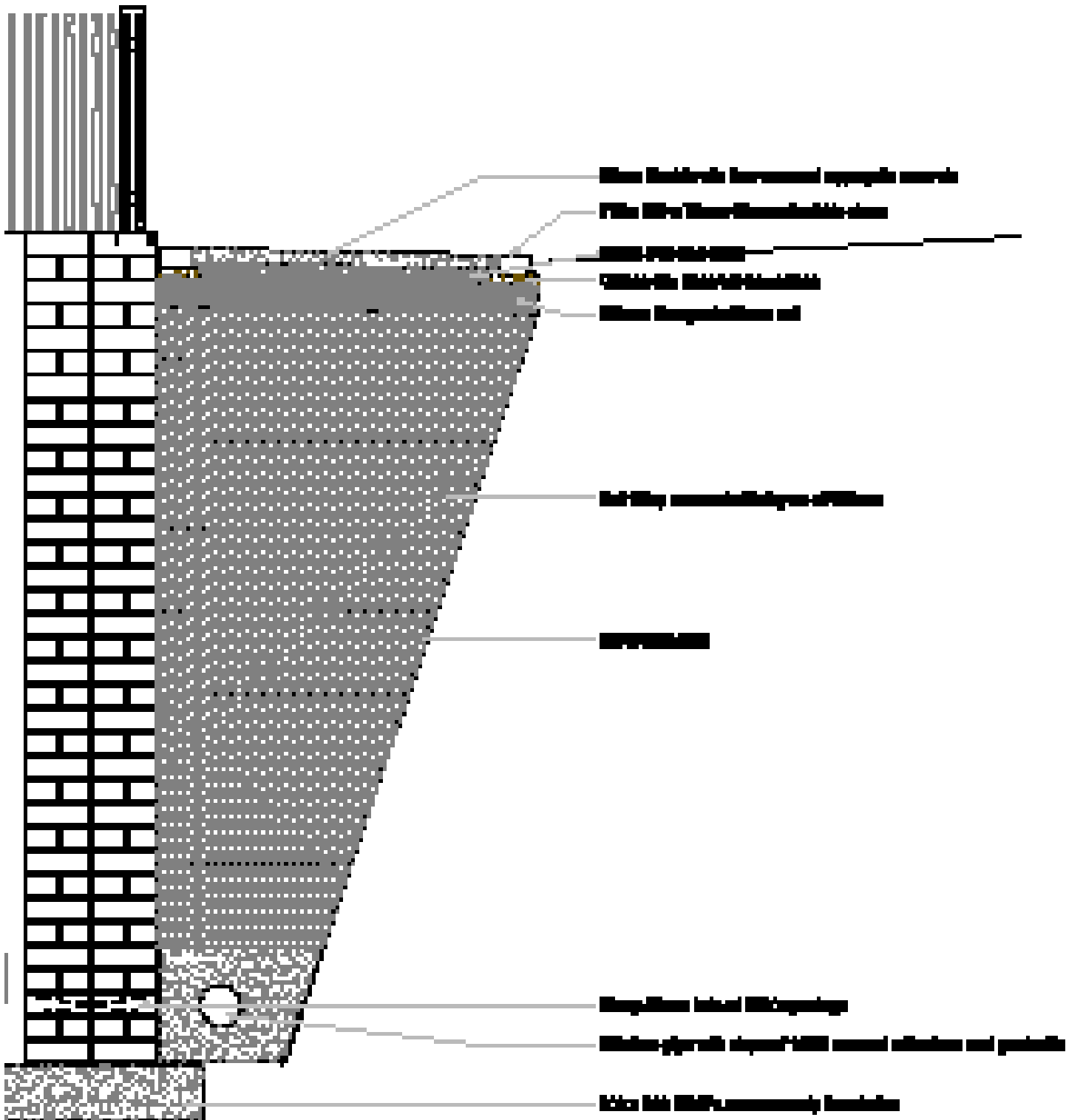


LOOKING WINDOW BOUNDARY WALL ELEVATION



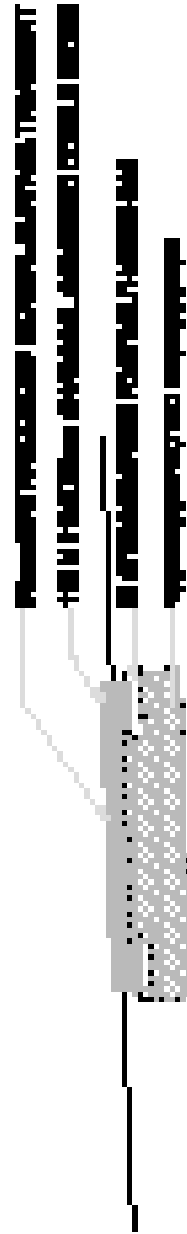
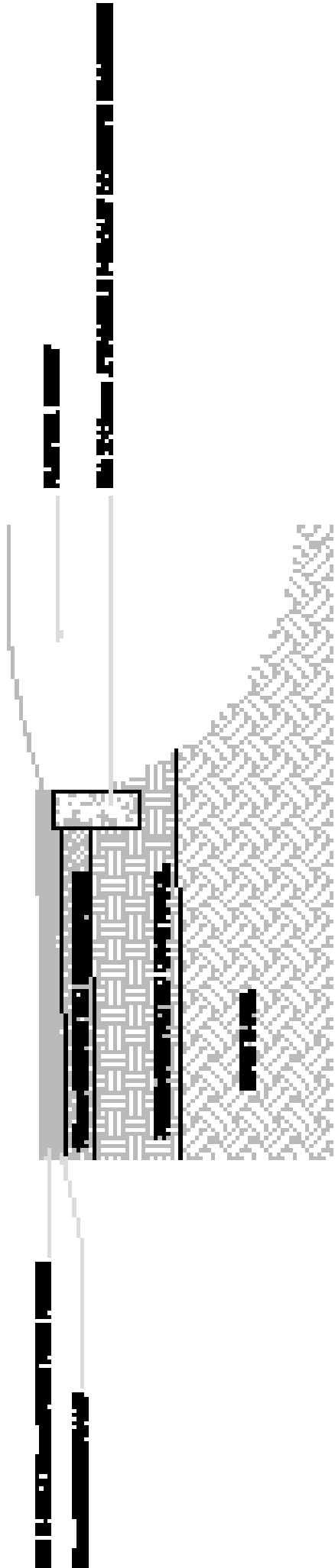
SECTION

BRICK RETAINING WALL AND WALKWAY
SCALE 1:20

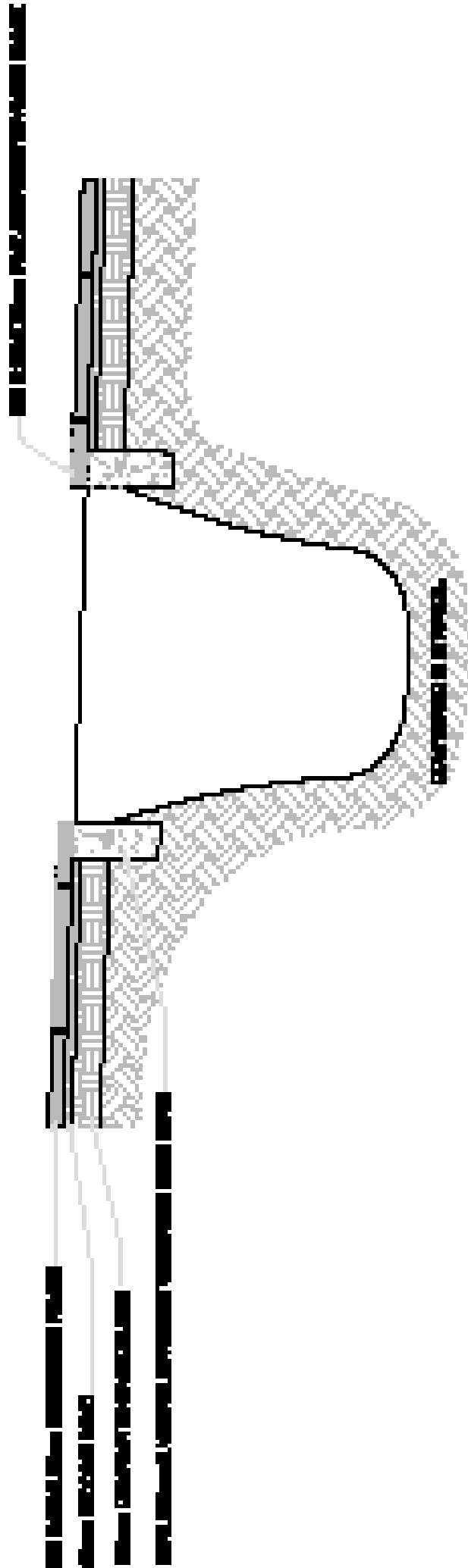


PAVING & EDGING
SCALE 1:20

ECOBOND WALKWAY
SCALE 1:20

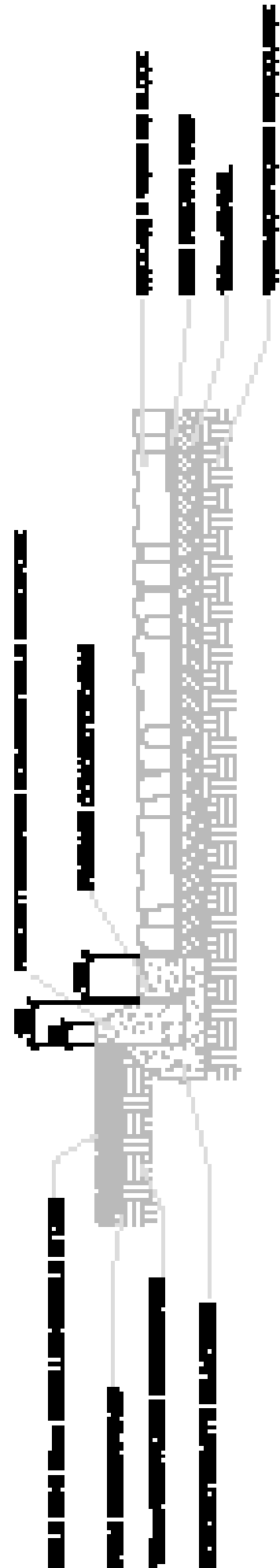
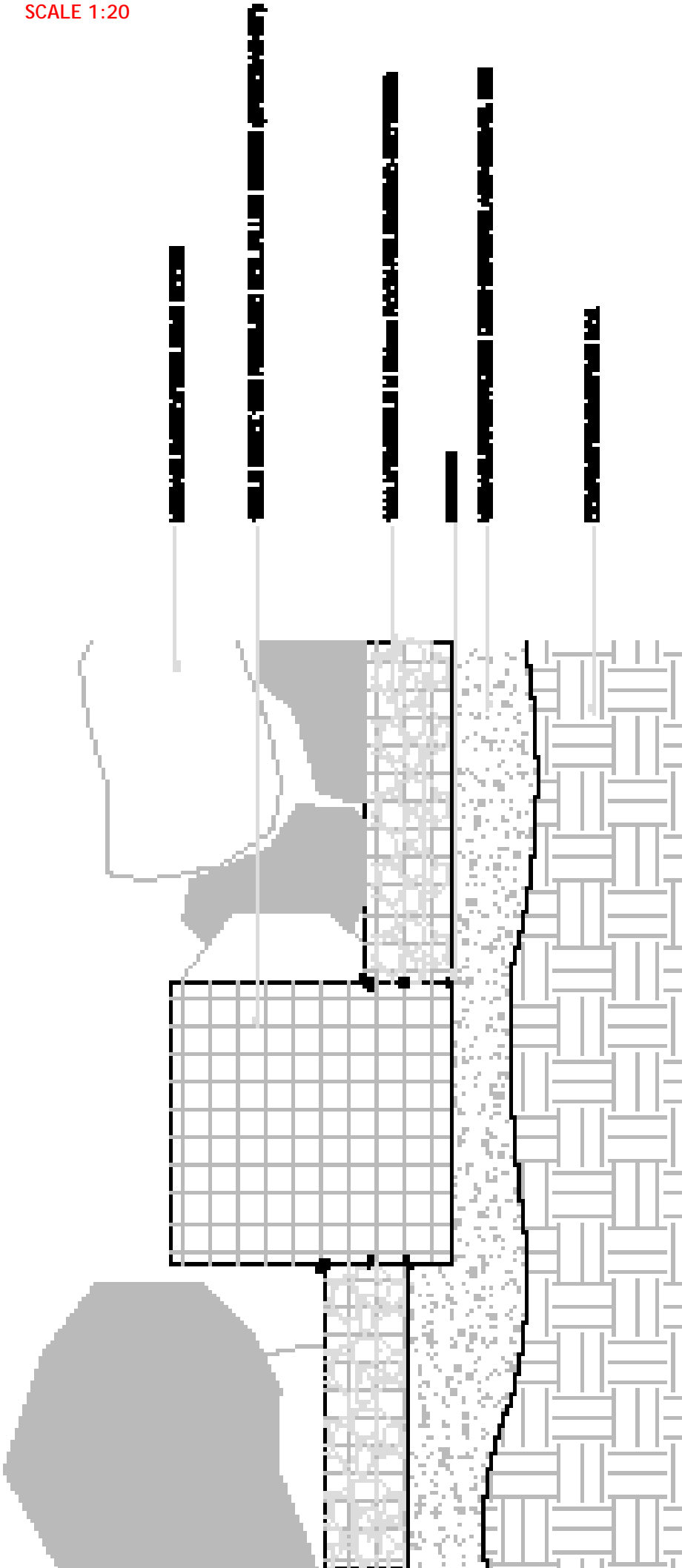


PAVING & TREE PLANTER
SCALE 1:20

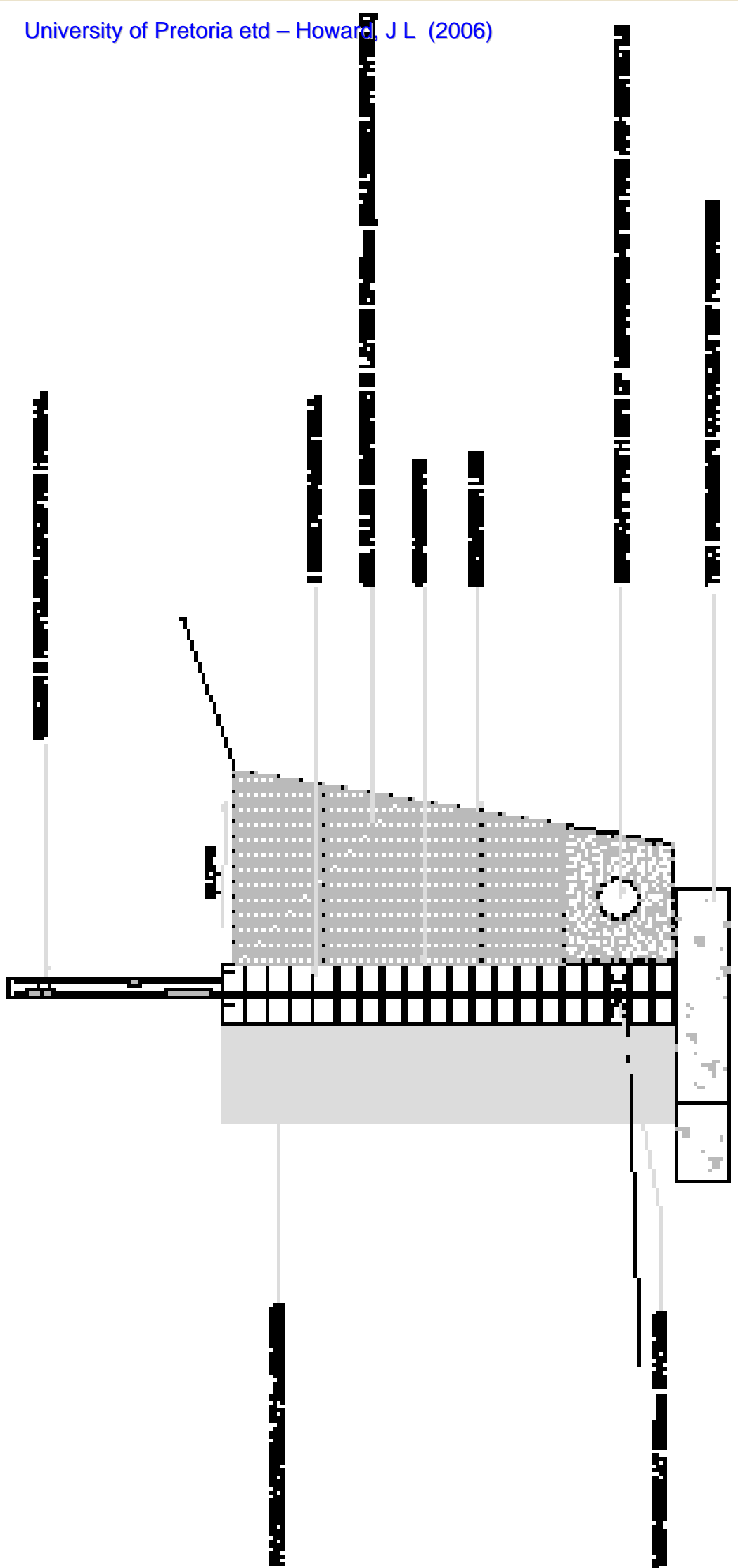


RENO-MATTRESS STREAM LINING & TREE BASKET
SCALE 1:20

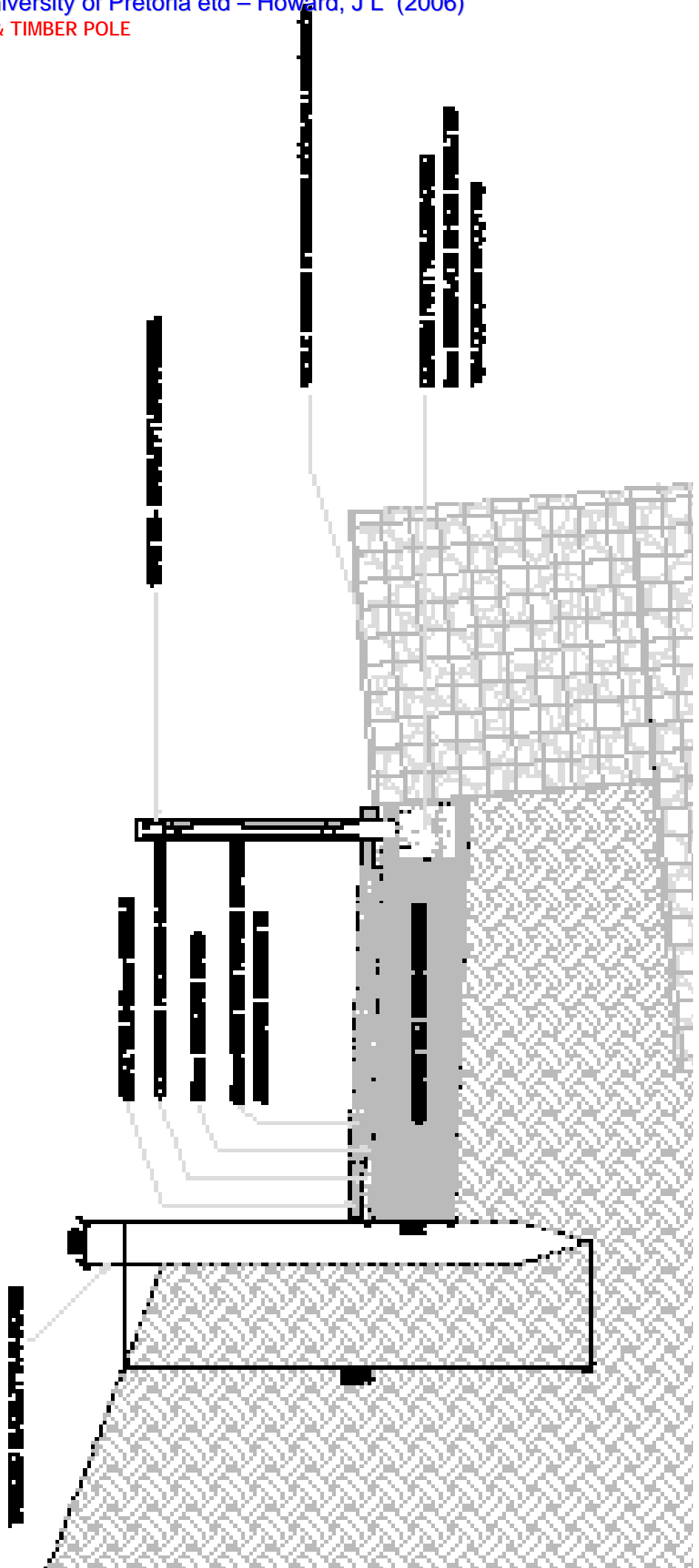
BG BLOCK PAVING
SCALE 1:20



RETAINING WALL
SCALE 1:20



WALKWAY, GABION REINFORCING & TIMBER POLE
REINFORCING
SCALE 1:20



PAVING PATTERN
NOT TO SCALE

