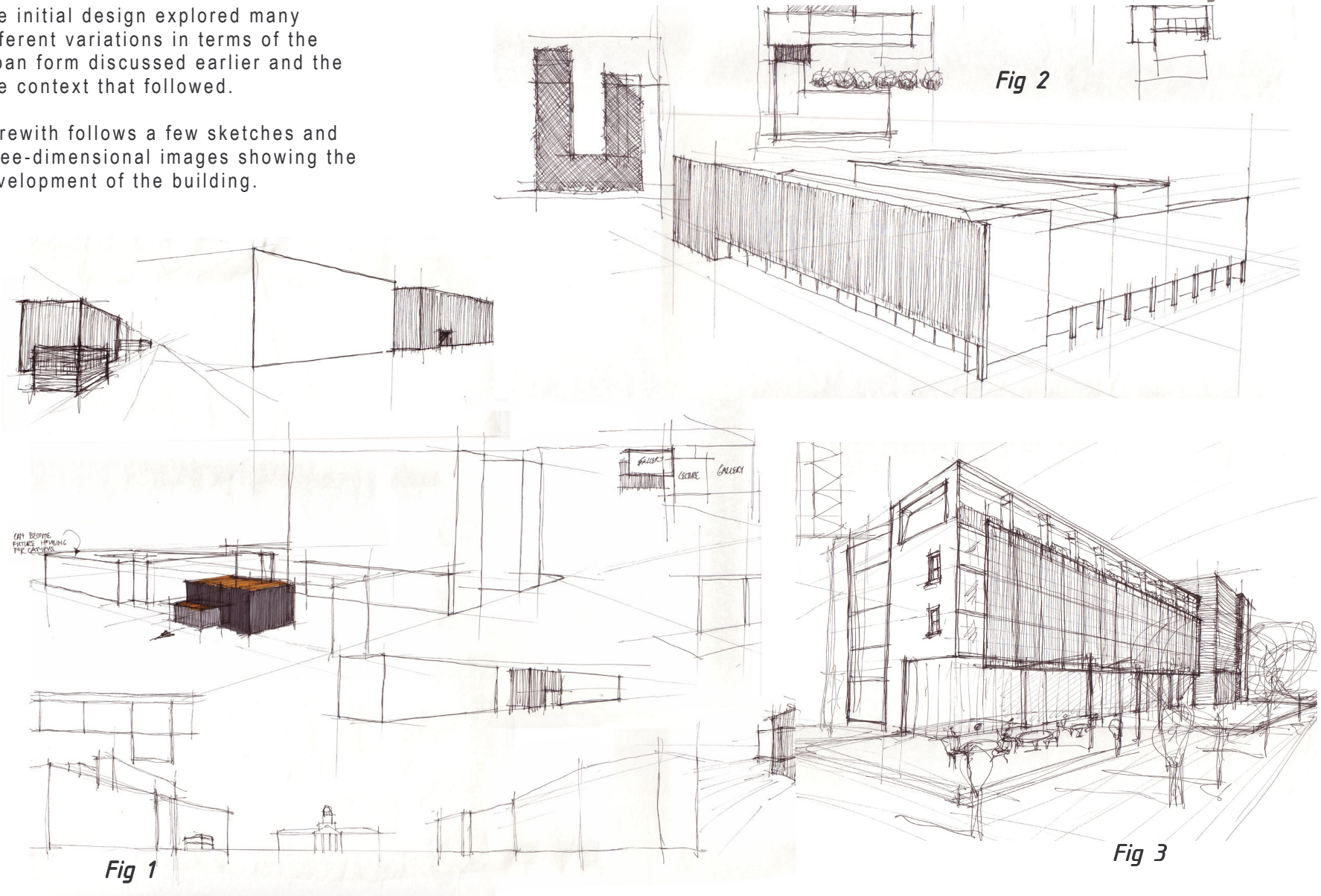


009

The initial design explored many different variations in terms of the urban form discussed earlier and the site context that followed.

Herewith follows a few sketches and three-dimensional images showing the development of the building.

design resolution



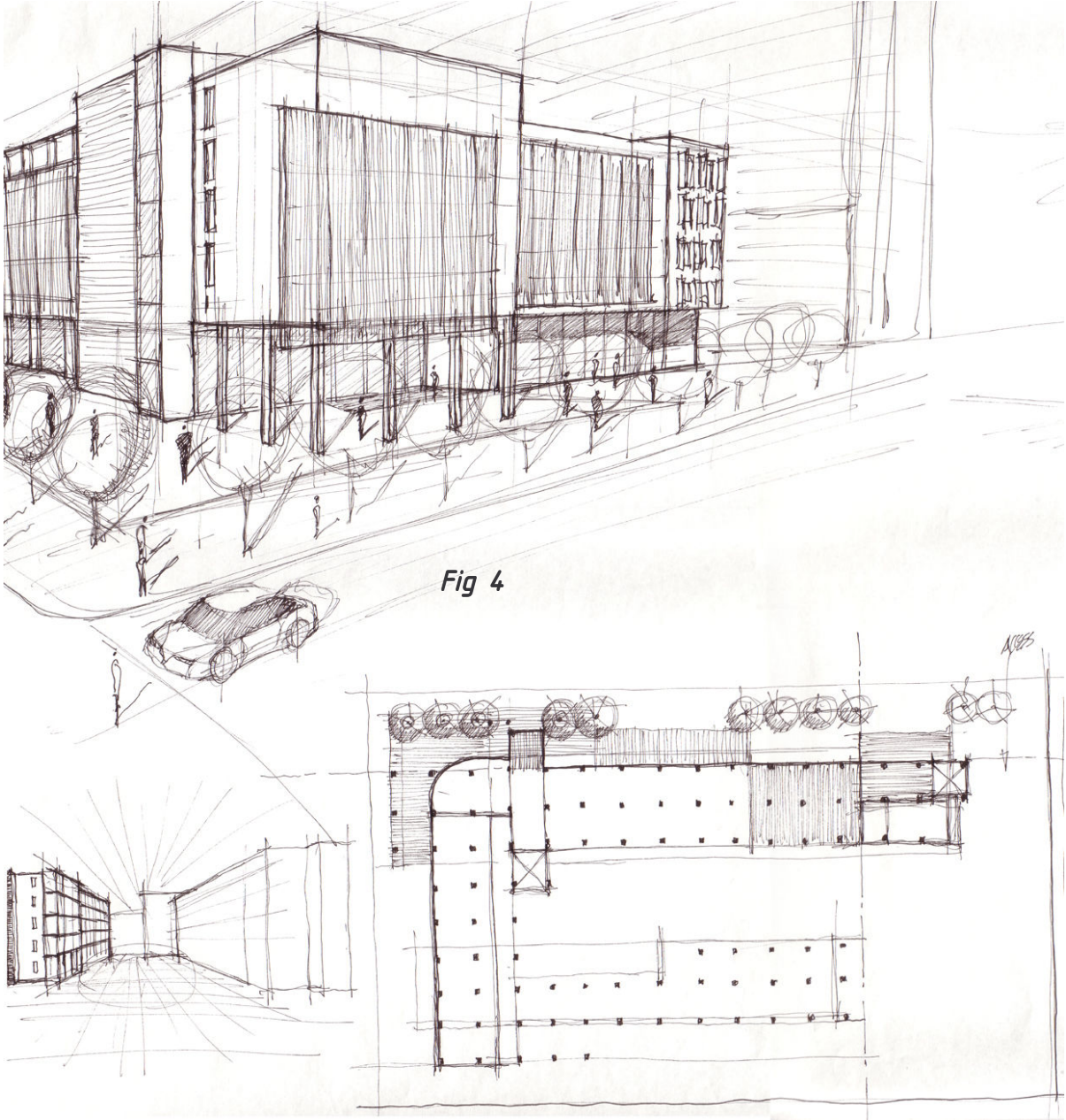


Fig 4

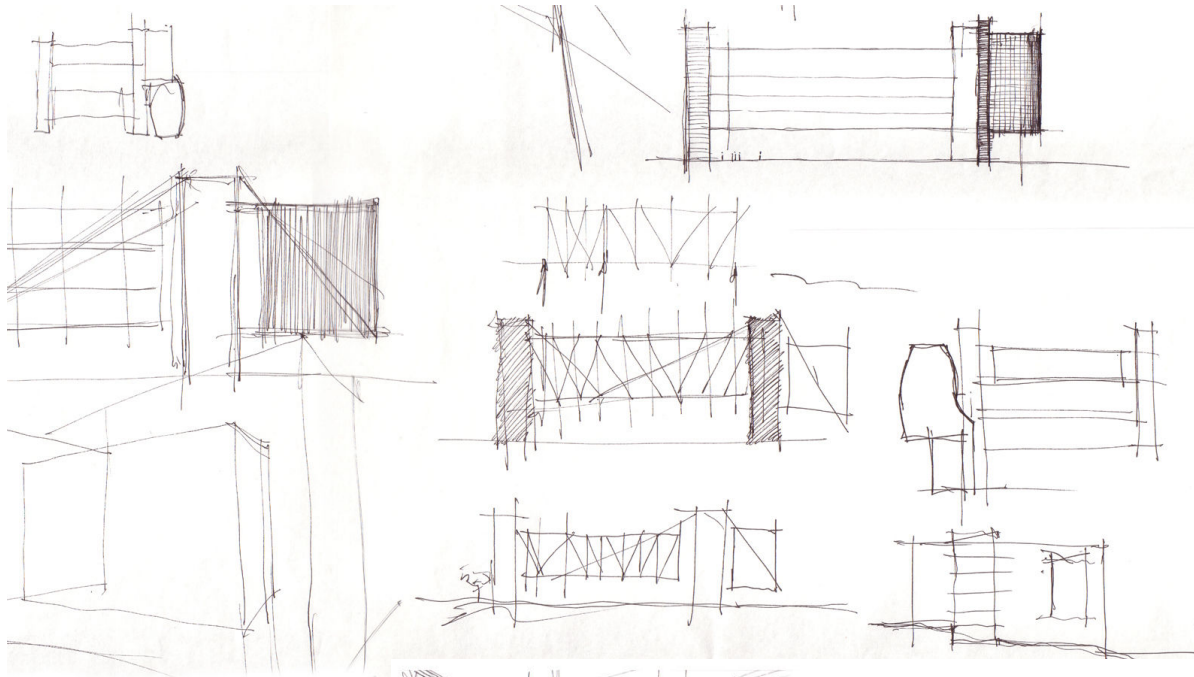


Fig 5

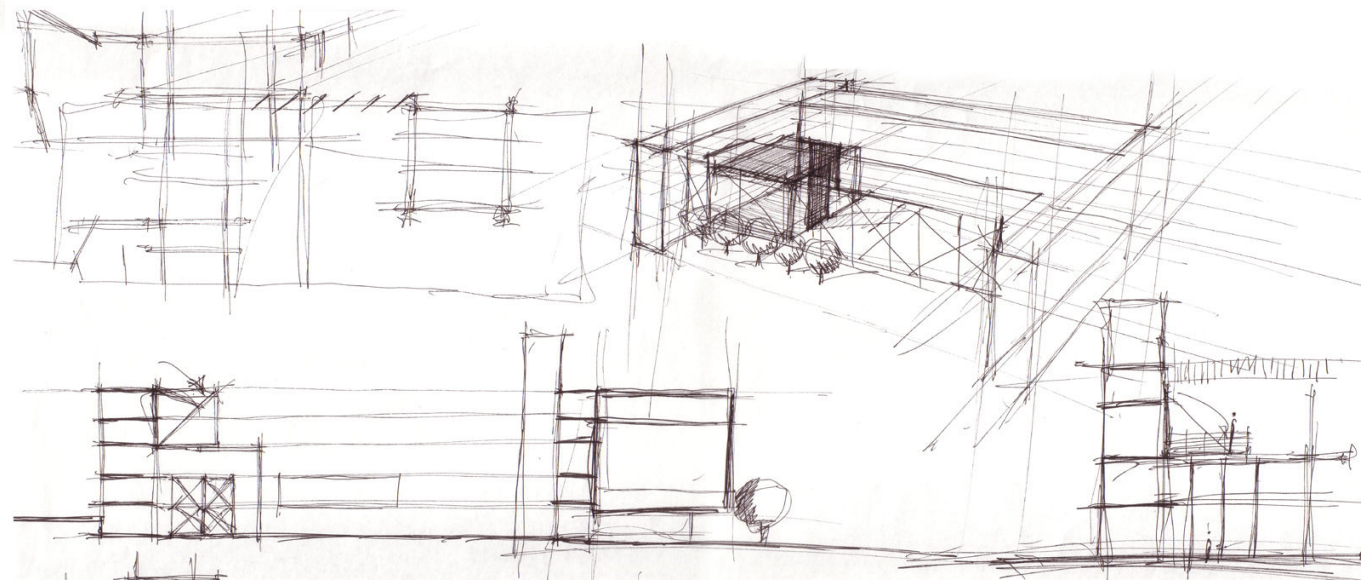


Fig 6

009

Figures 1 to 5 are early sketches illustrating the design process that lead to the final design. Initially the design was based on an isolated inner courtyard, Figures 1-4. Becoming too conservative in design resolution, it was decided to readdress the design.

This design did not react appropriately enough to the neighbouring buildings and the building was altered to offer a courtyard that relates to the public open space in front of City Hall. Opening the courtyard meant that the studio spaces on the northern side of the building were to suspend.

design resolution

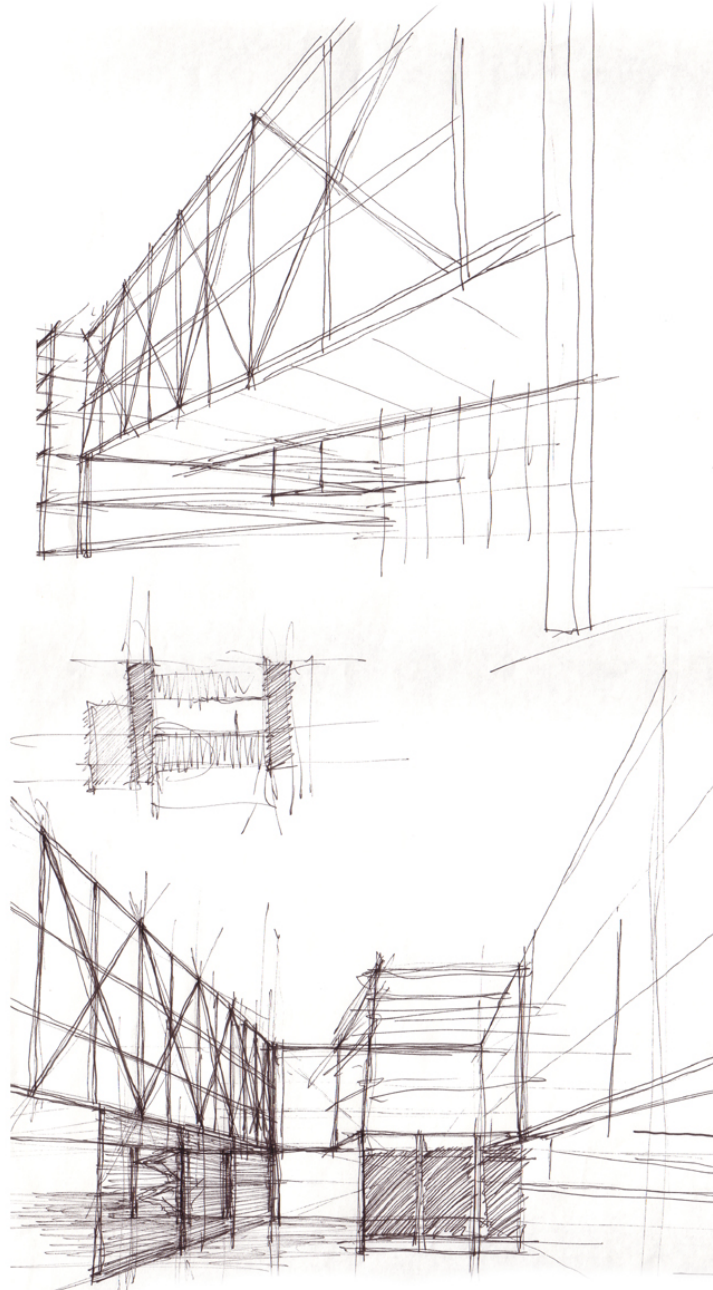


Fig 7

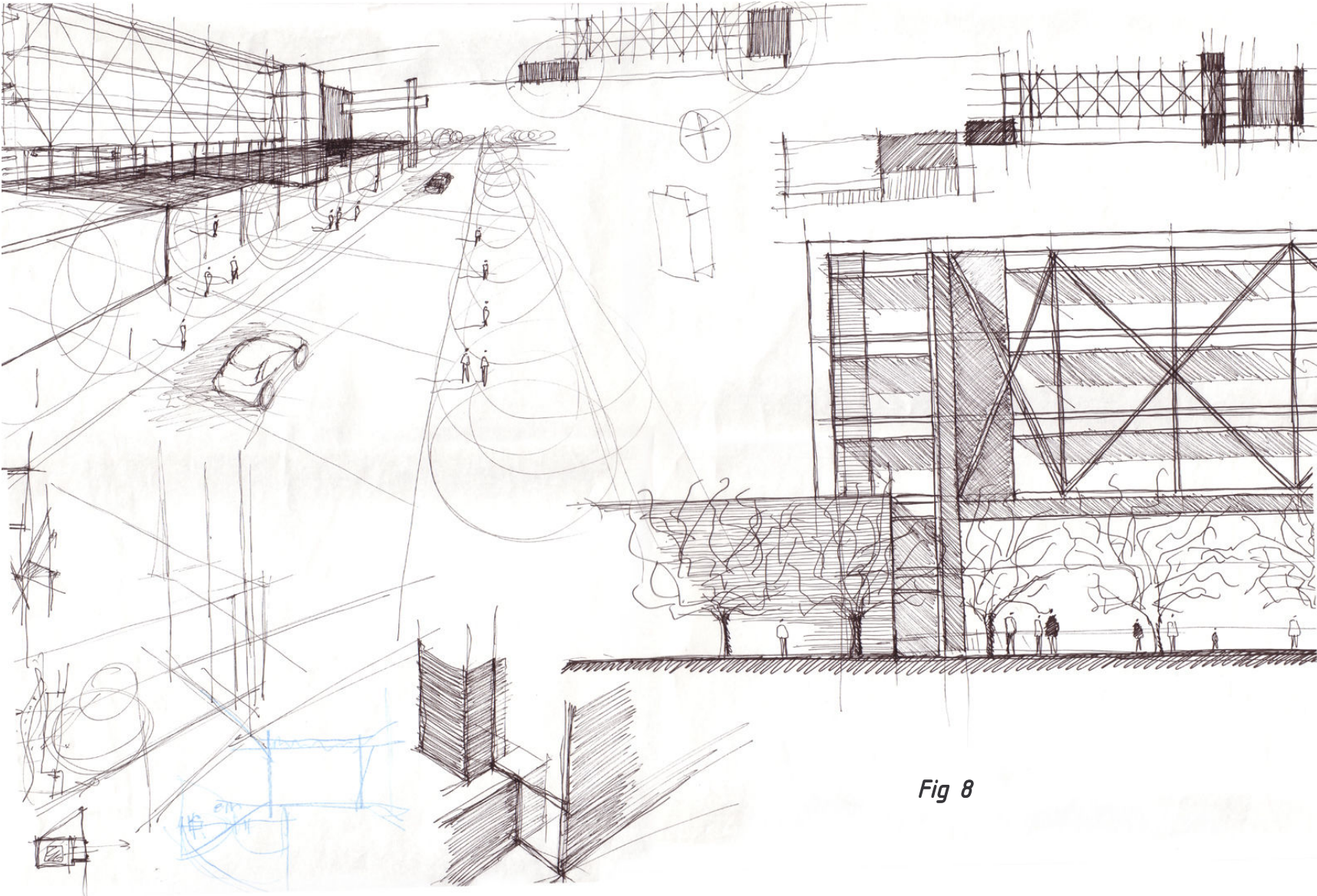


Fig 8

009

design resolution

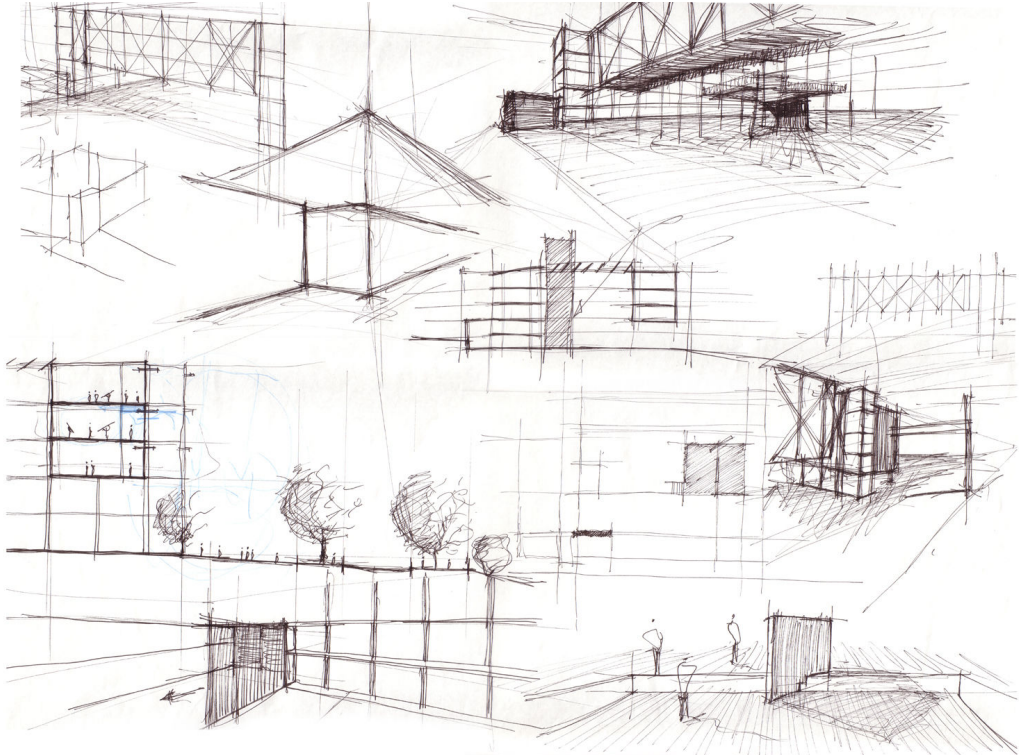


Fig 9

Fig 10

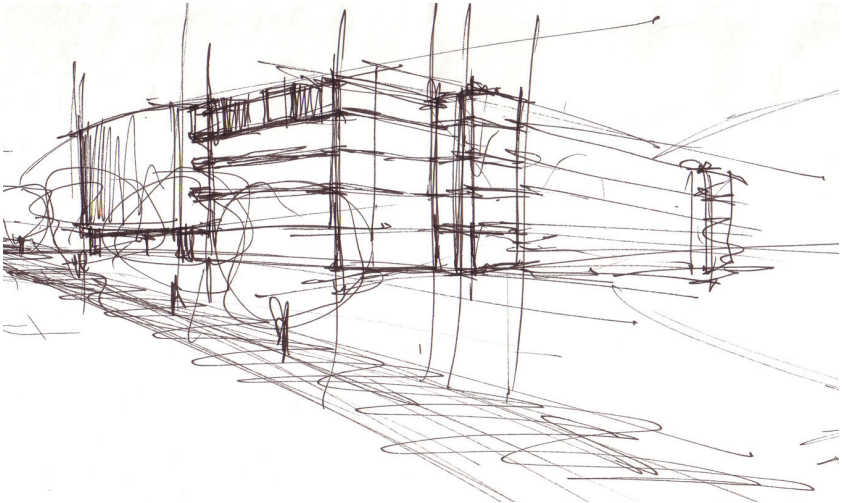


Fig 11

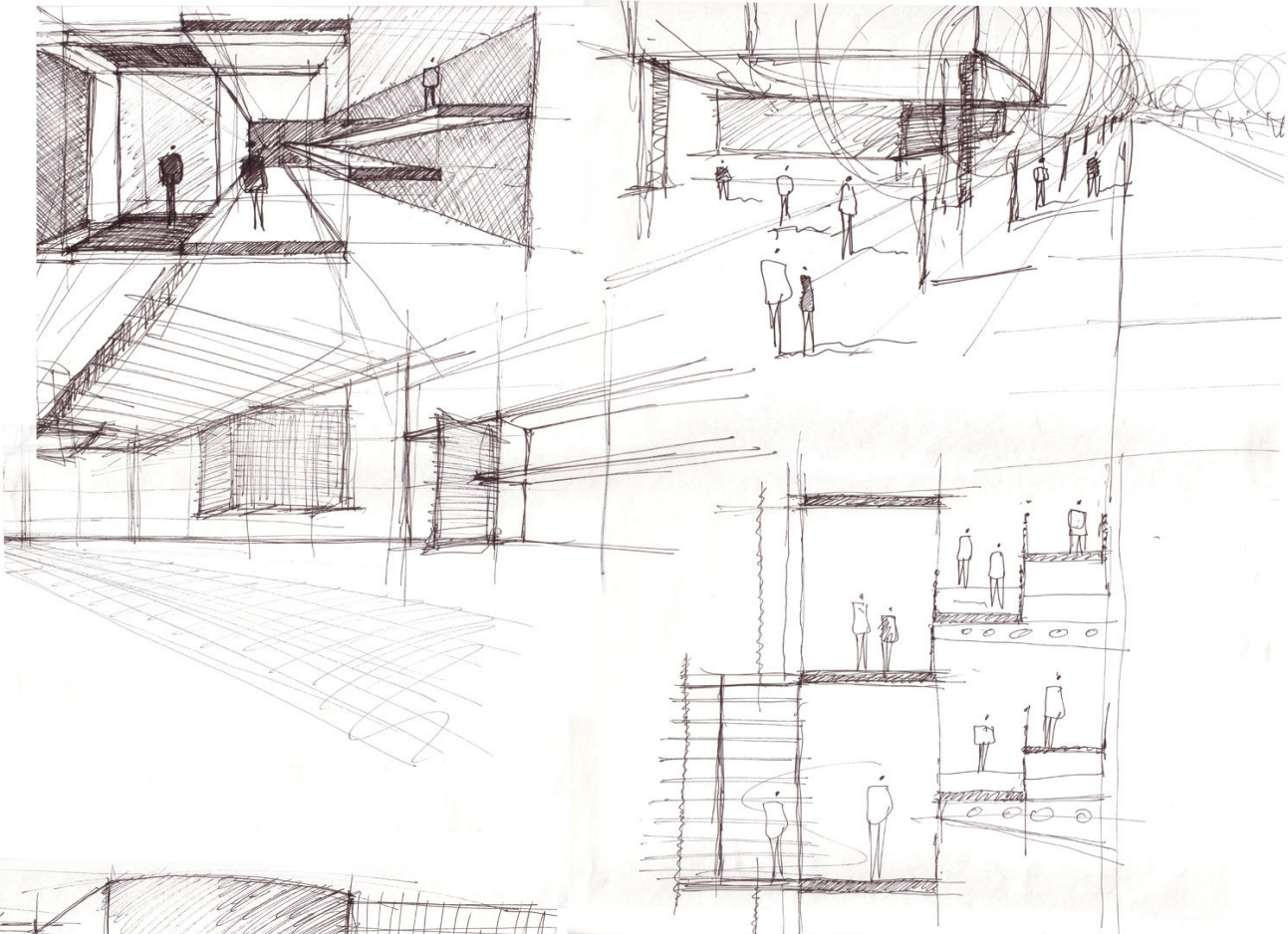
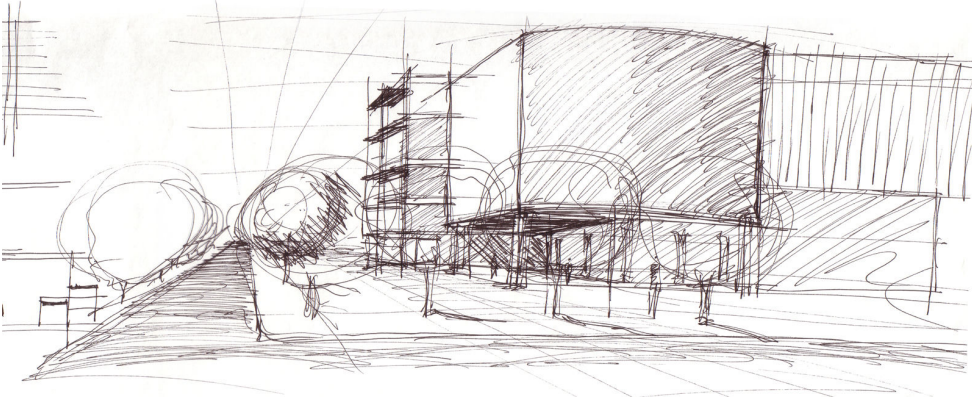


Fig 12



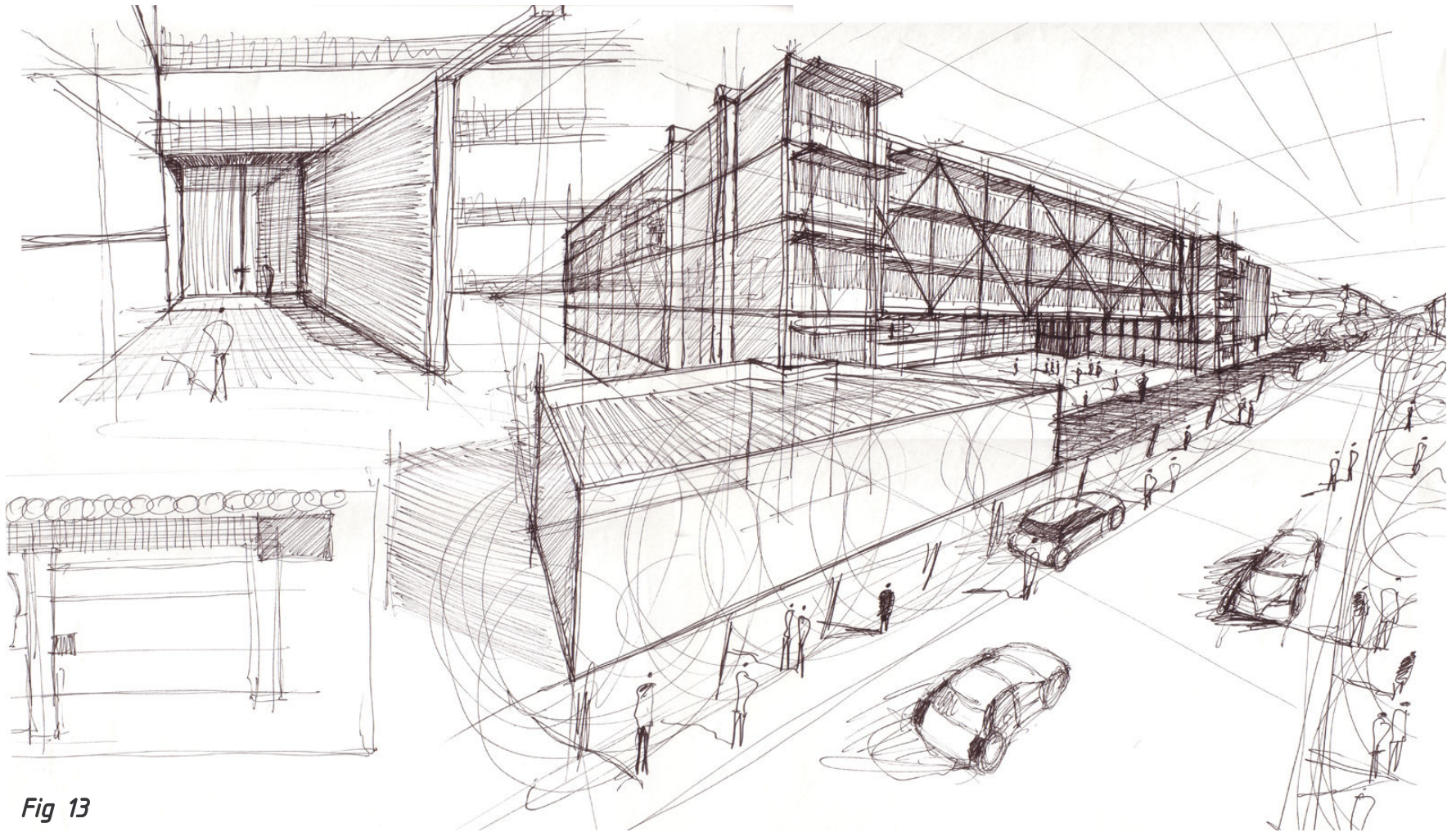


Fig 13

009

design resolution

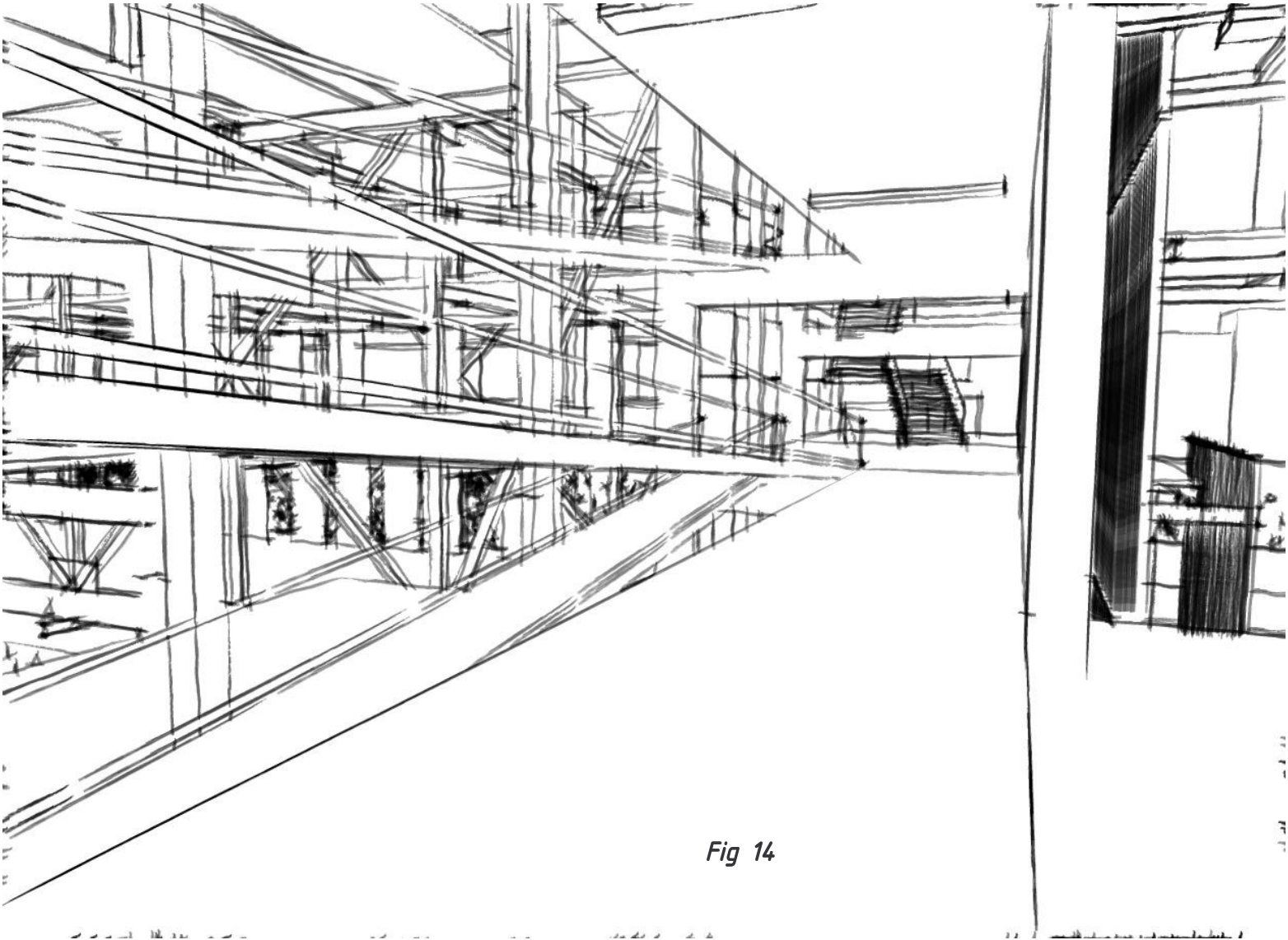


Fig 14

1. Eastern circulation wing
2. Residential units (southern wing)
3. Western circulation wing
4. Entrance foyer
5. Exposed hydraulic lift shaft steel structure and stairs
6. Second concrete lift shaft and staircase
7. Retained railway building
8. Expo pod structure
9. Existing Jacaranda trees

10. Office spaces
11. Double volume entrance into workshop and machine shop
12. Deciduous creeper in northern facade of southern wing
13. Light timber shade structure above canteen
14. Planted landscape with shade grass and Coast silver oak trees
15. Galvanised steel basement ventilators
16. Minnaar Street

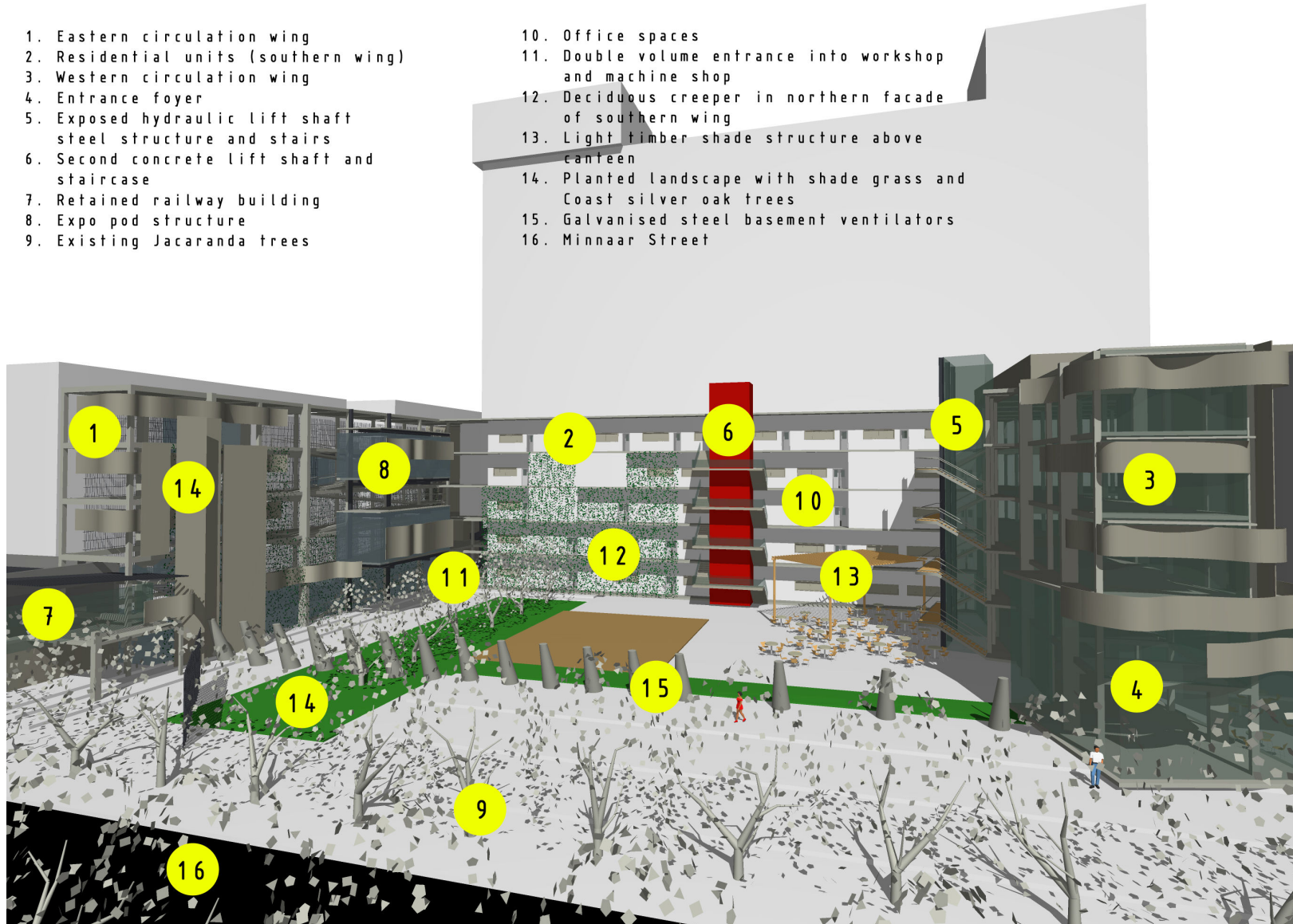


Fig 15

- 1. Steel studio bridge structure
- 2. Plywood Sunscreens on light steel structure

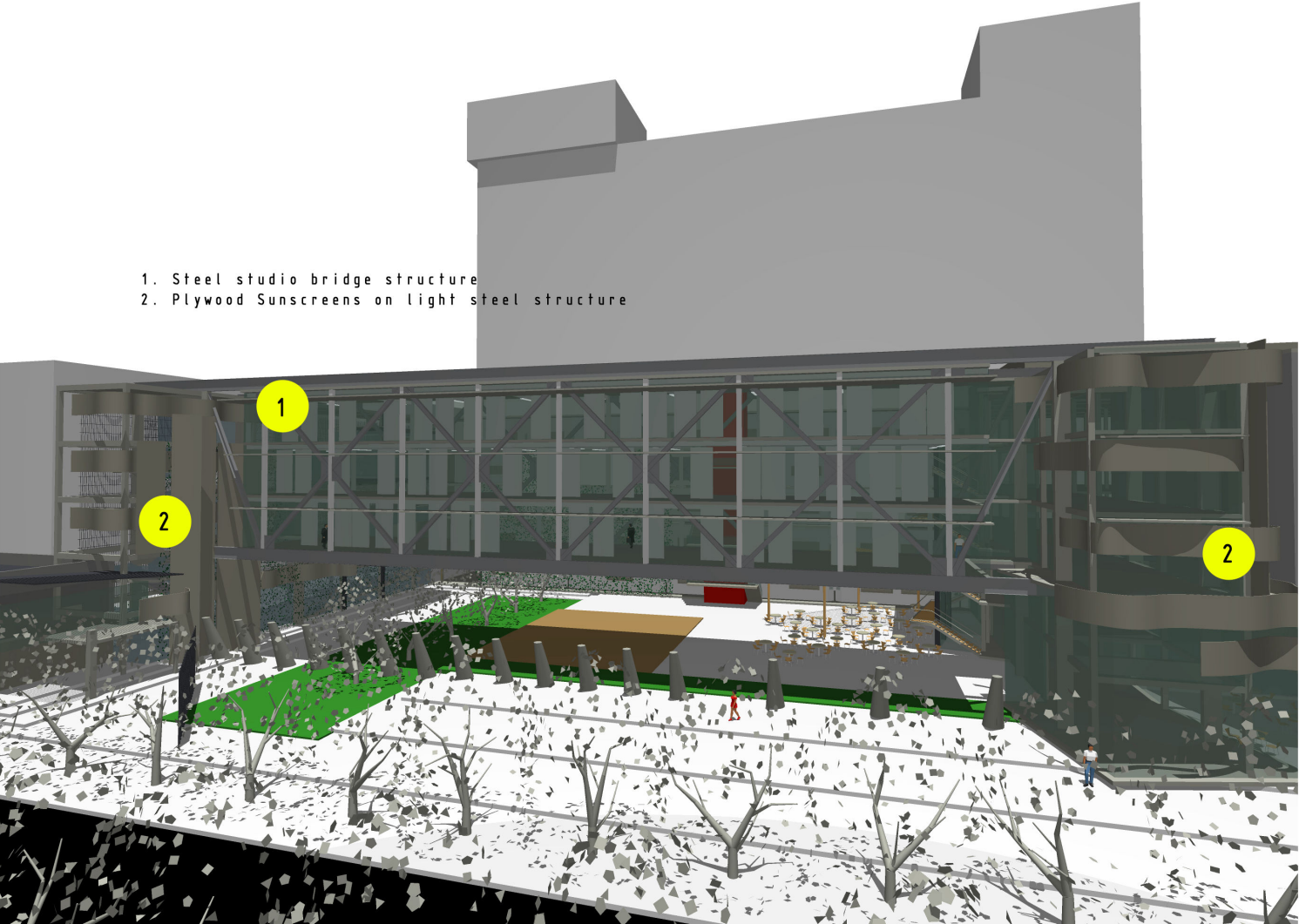


Fig 16