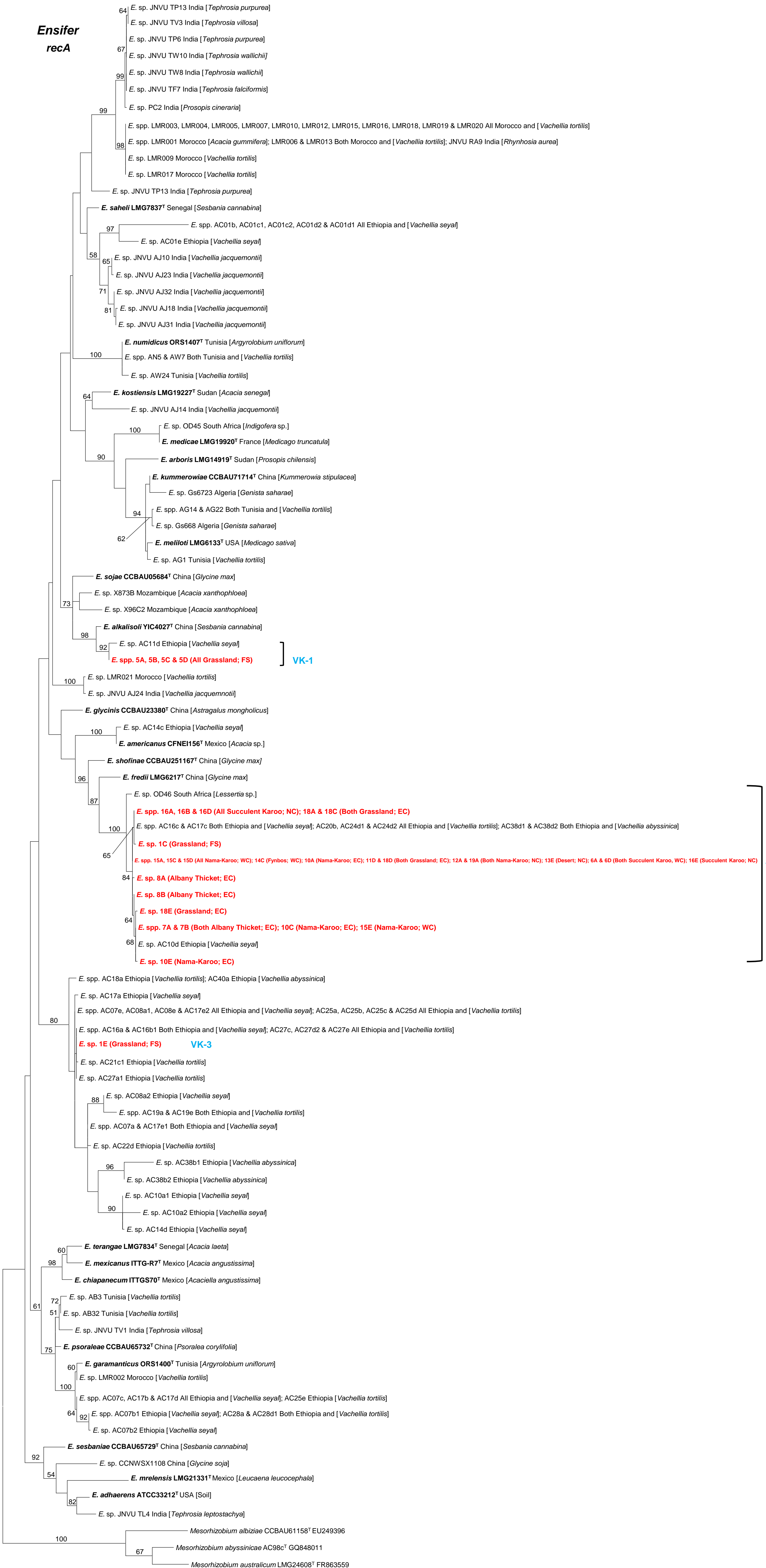


**Ensifer
recA**



0.05

Suppl. Fig. S1 A *recA* maximum-likelihood phylogeny of the genus *Ensifer*. Isolates from this study appear in red followed by information for the biome and province (abbreviated as described for Table 1) from which the soil of the 'trapping' experiment originates. Lineages pertaining to this study (VK-1 to VK-3) are demarcated and indicated in blue. *Ensifer* type strains appear in bold and all the isolates have their country of origin and source or host listed. GenBank accession numbers and references for all the isolates in the ingroup are listed in Suppl. Table S1. Three *Mesorhizobium* species are used as the outgroup and are indicated with the type strain numbers and GenBank accession numbers. Bootstrap support of $\geq 50\%$ are indicated and scale bar indicates the number of nucleotide substitutions per site.