



This chapter illustrates the resolution of the design on a technical level.

TECHNICAL RESOLUTION



VWL CENTRE

HIGH COURT
CHAMBERS

PTA NEWS

PIERNEEF
MUSEUM

TRIBECA

HALLMARK



NATIONAL TREASURY

VITALITY SQUARE

NOORDVAAL

ONS EERSTEVOLKSBANK

PUBLIC PROSECUTIONS

CHURCH SQUARE



LOCALITY PLAN
1:1000



BASEMENT PLAN
1:200





HEALTH COFFEE SHOP
KITCHEN
LIFT
MAIN RECEPTION
SHOP 1
SHOP 2
STORE
WC
STORE

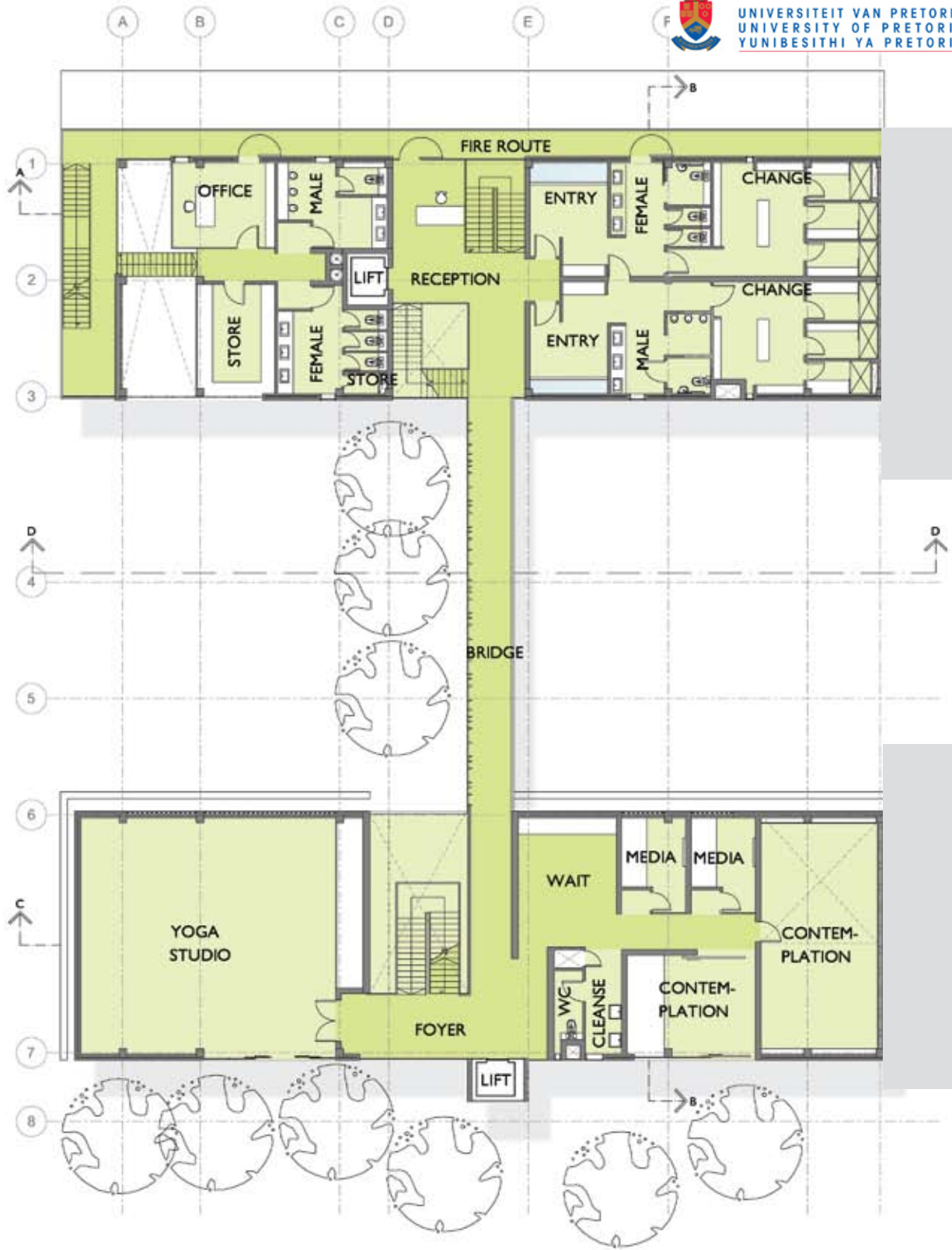
SQUARE
REFLECTION POND
REFUSE AREA

HEALTH BOOKSHOP
READING AREA
PAY POINT
WC
FOYER
GROUP CONTEMPLATION SPACE
ST
LIFT

GARDEN



GROUND FLOOR PLAN
1:200



FIRST FLOOR PLAN
1:200





SECOND FLOOR PLAN

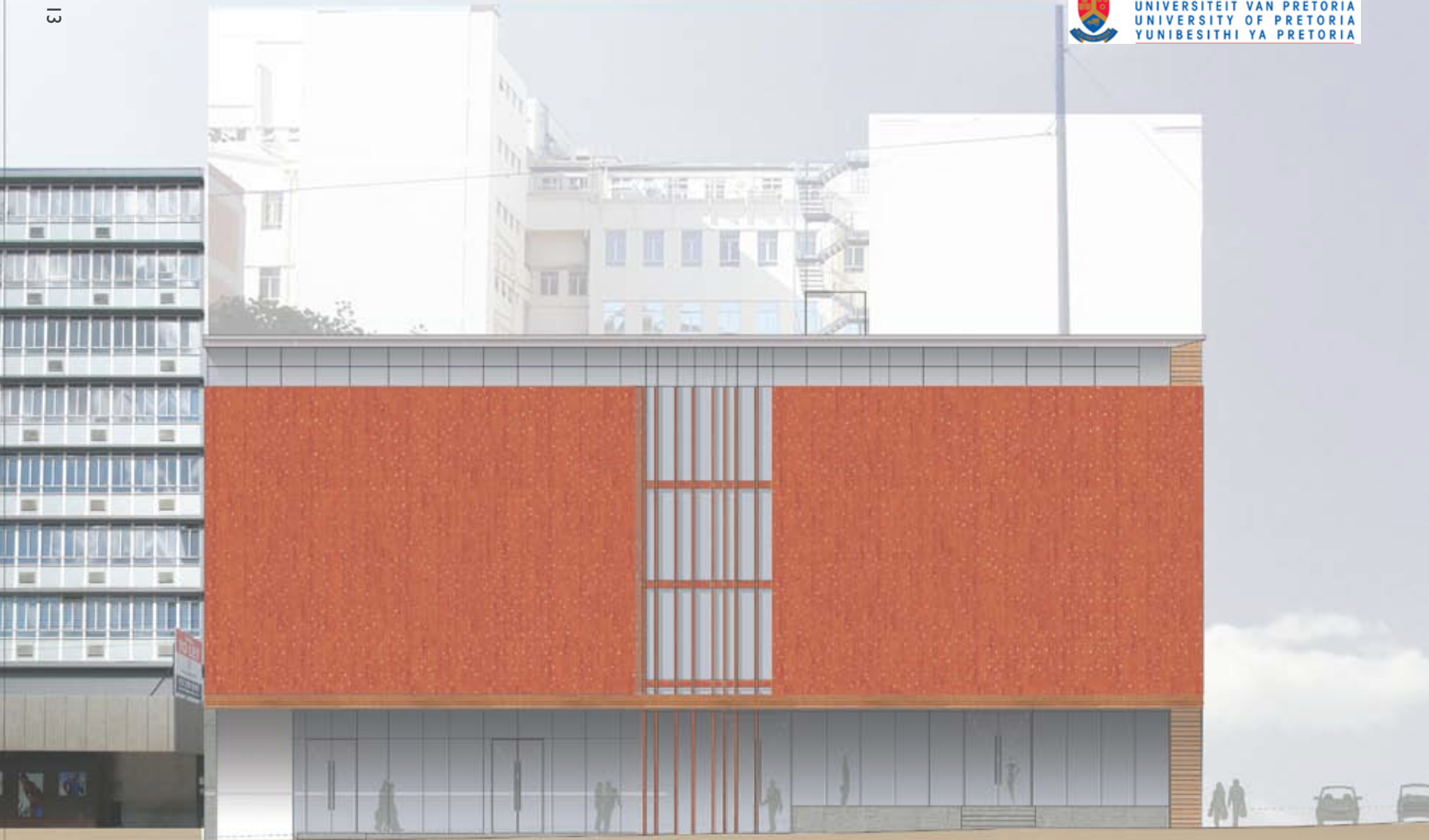
1:200





THIRD FLOOR PLAN
1:200





NORTH ELEVATION - NORTH BUILDING
1:200



SOUTH ELEVATION - NORTH BUILDING
1:200

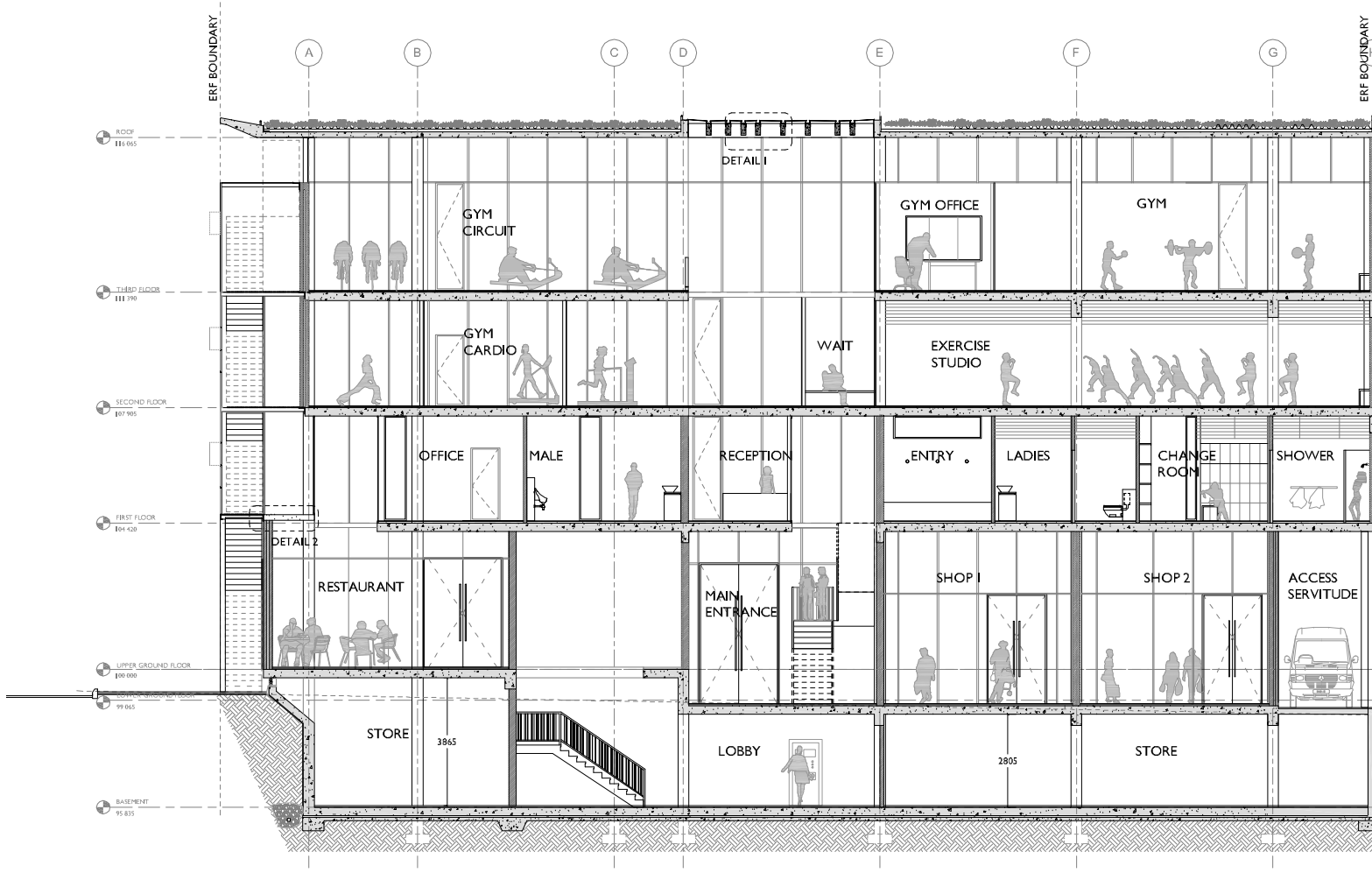


NORTH ELEVATION - SOUTH BUILDING
1:200

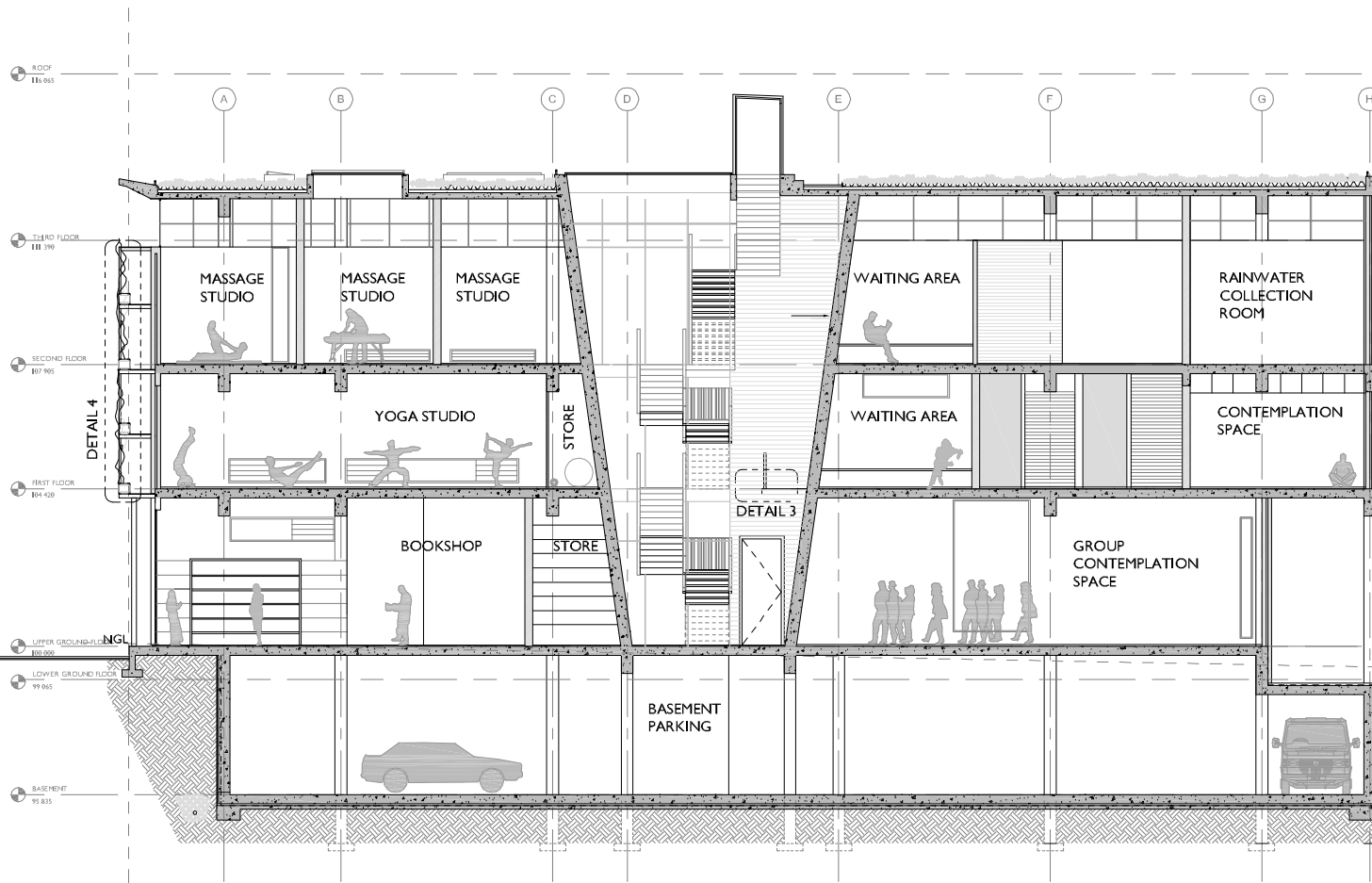


SOUTH ELEVATION - SOUTH BUILDING

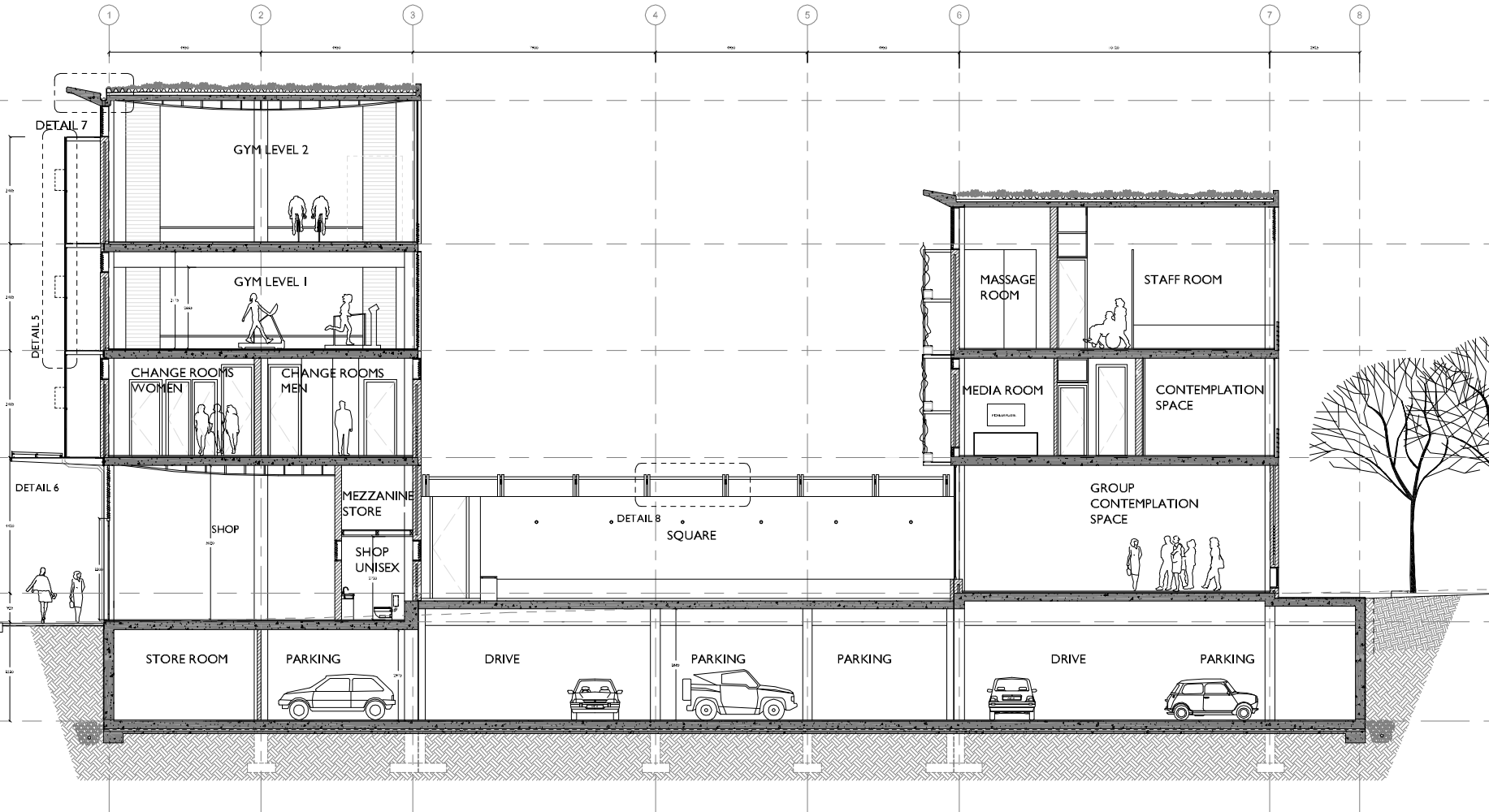
1:200



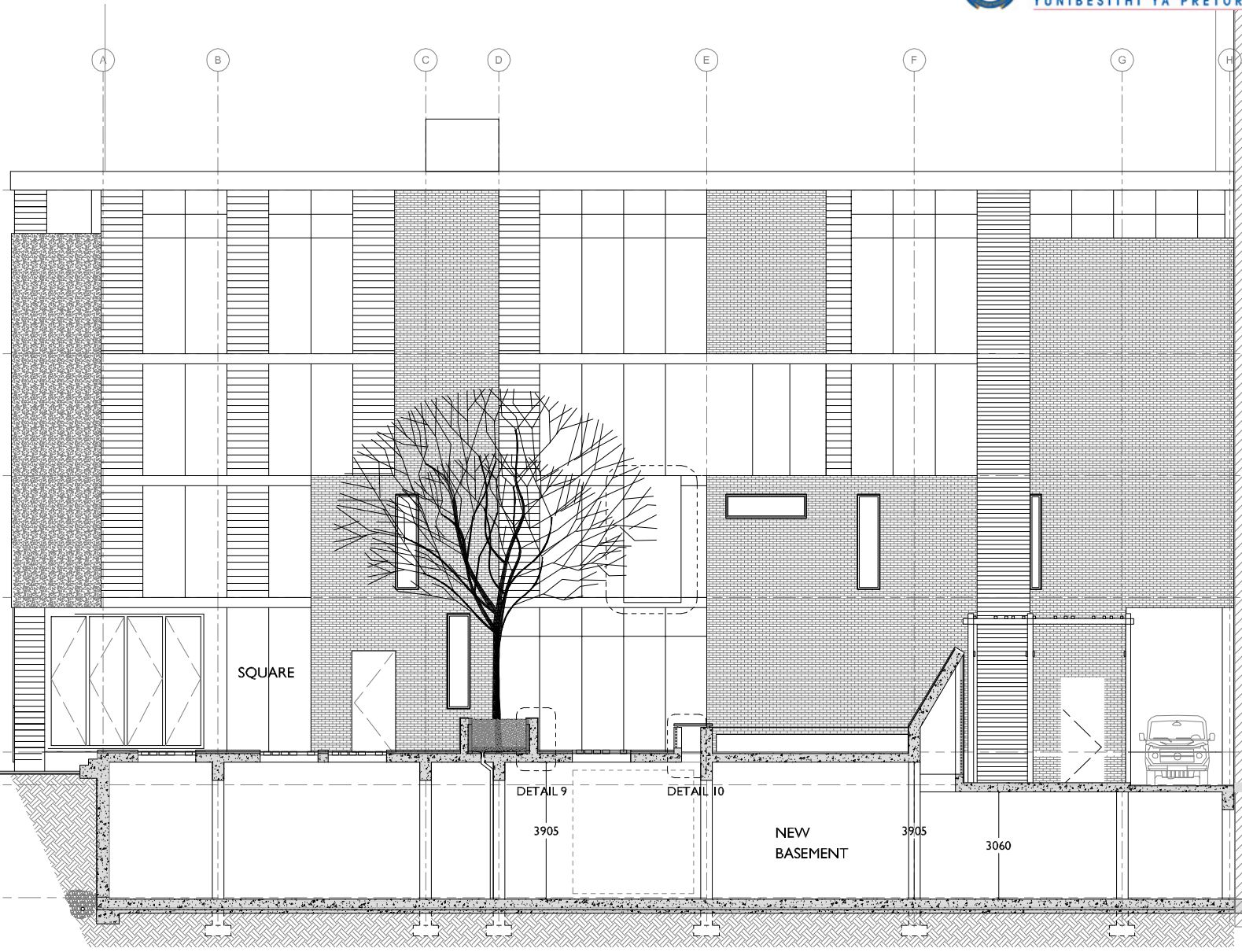
SECTION AA
1:200



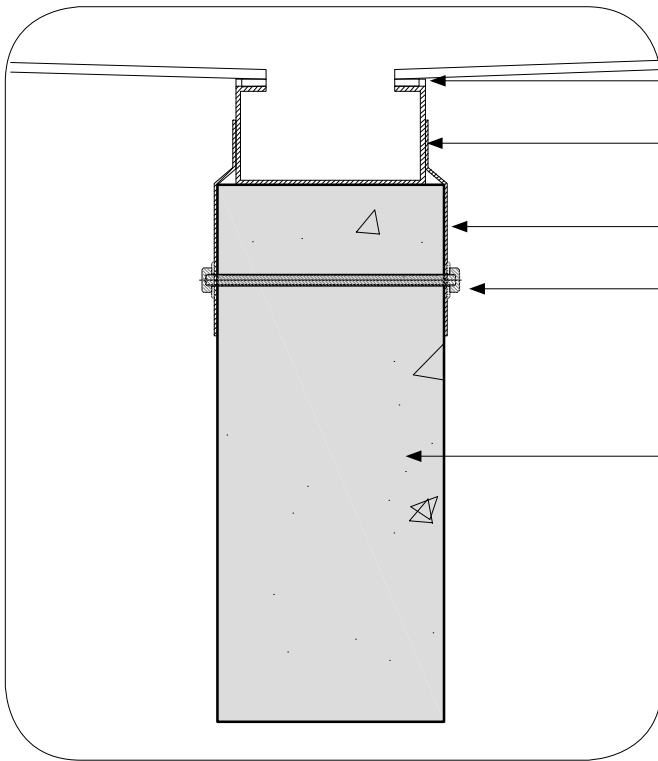
SECTION BB
1:200



SECTION CC
1:200



SECTION DD
1:200



6mm safety glass sky light fixed to channel with double sided tape, sealed

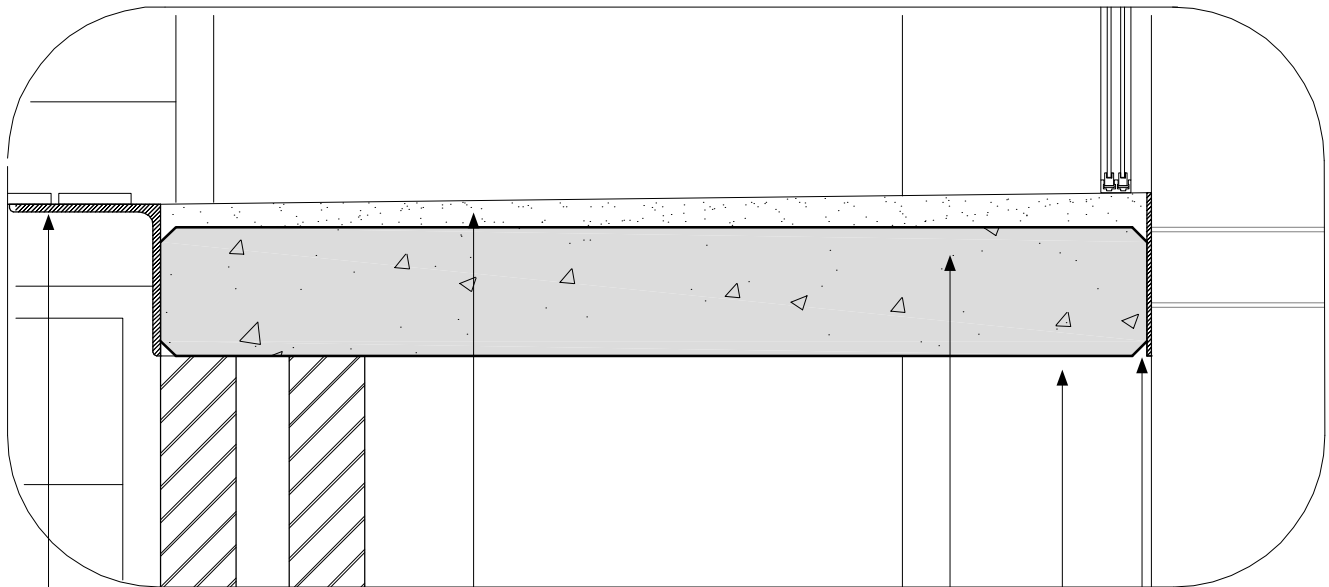
125 x 75 x 20 x 2mm galvanised steel lipped channel gutter, sloped minimum 1:200 towards waterproofed roof

2mm custom-made steel gutter plate, painted

M8 galvanised steel threaded rod, cast into concrete, gutter plate fixed with galvanised steel nut

150mm x 340mm reinforced concrete beam, to engineer's specification

**DETAIL 1
SKYLIGHT 1:5**



200 x 200 x 10mm painted steel equal angle, fixed to reinforced concrete slab with M10 chemical bolts

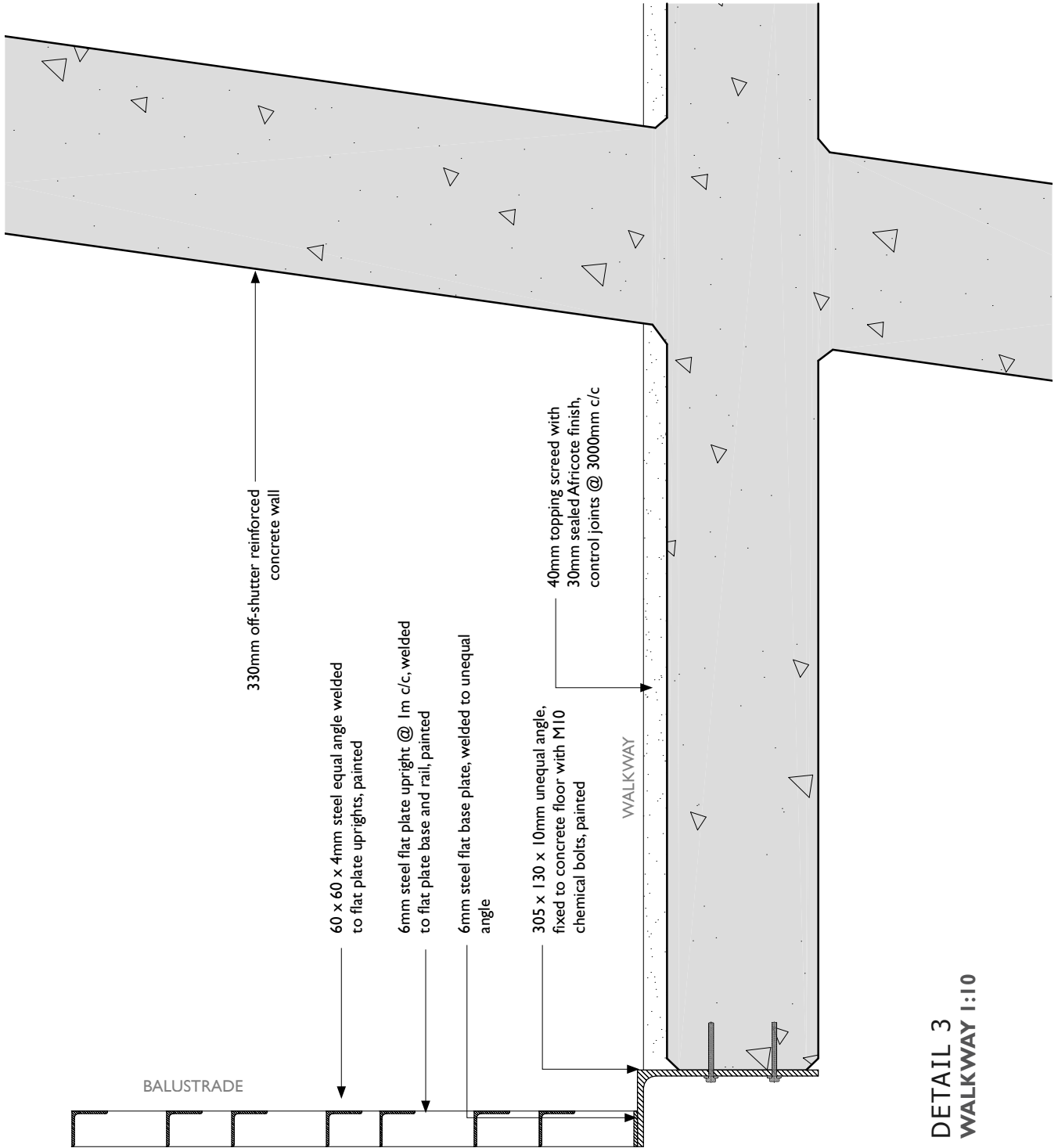
30mm concrete screed, sealed

170mm reinforced concrete slab to engineer's specification

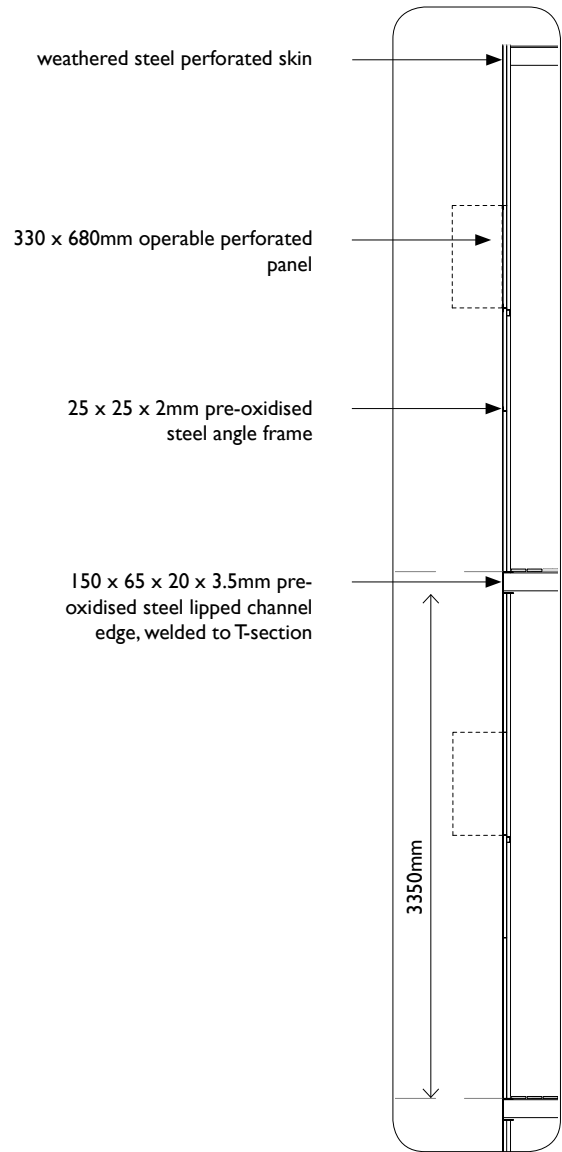
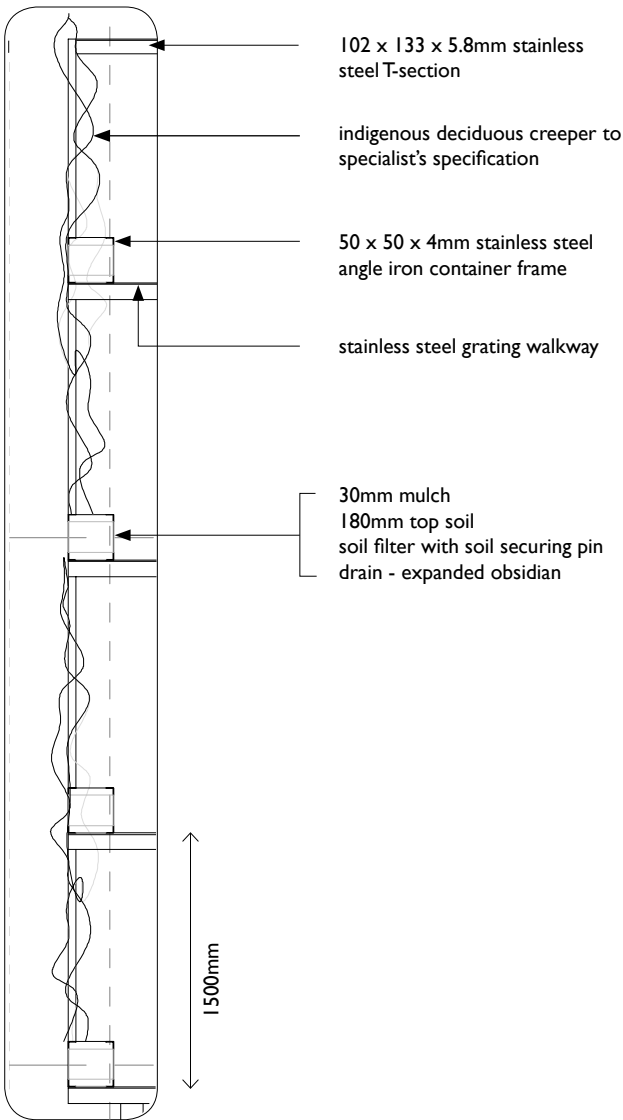
330 x 330mm reinforced concrete column behind

6mm painted steel plate edge, bolted to slab with M10 chemical bolts

**DETAIL 2
WALKWAY 1:20**

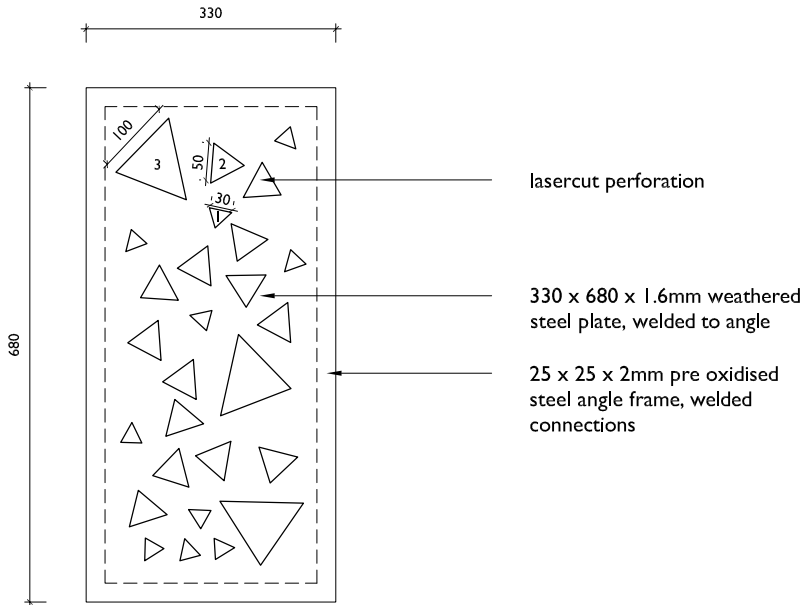


DETAIL 3
WALKWAY 1:10



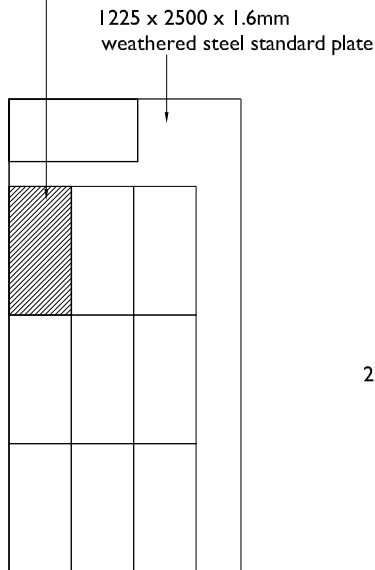
DETAIL 4
VERTICAL GARDEN TO G-SKY
MANUFACTURER'S SPECIFICATIONS
1:50

DETAIL 5
PERFORATED WEATHERED
STEEL SKIN SECTION n.t.s.

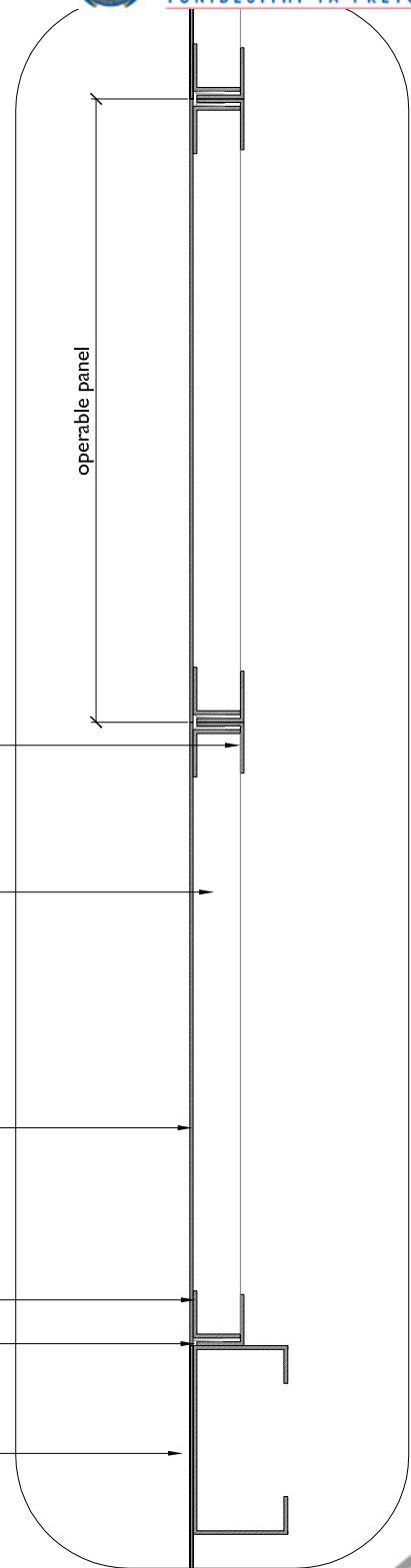


OPERABLE PANEL ELEVATION 1:10

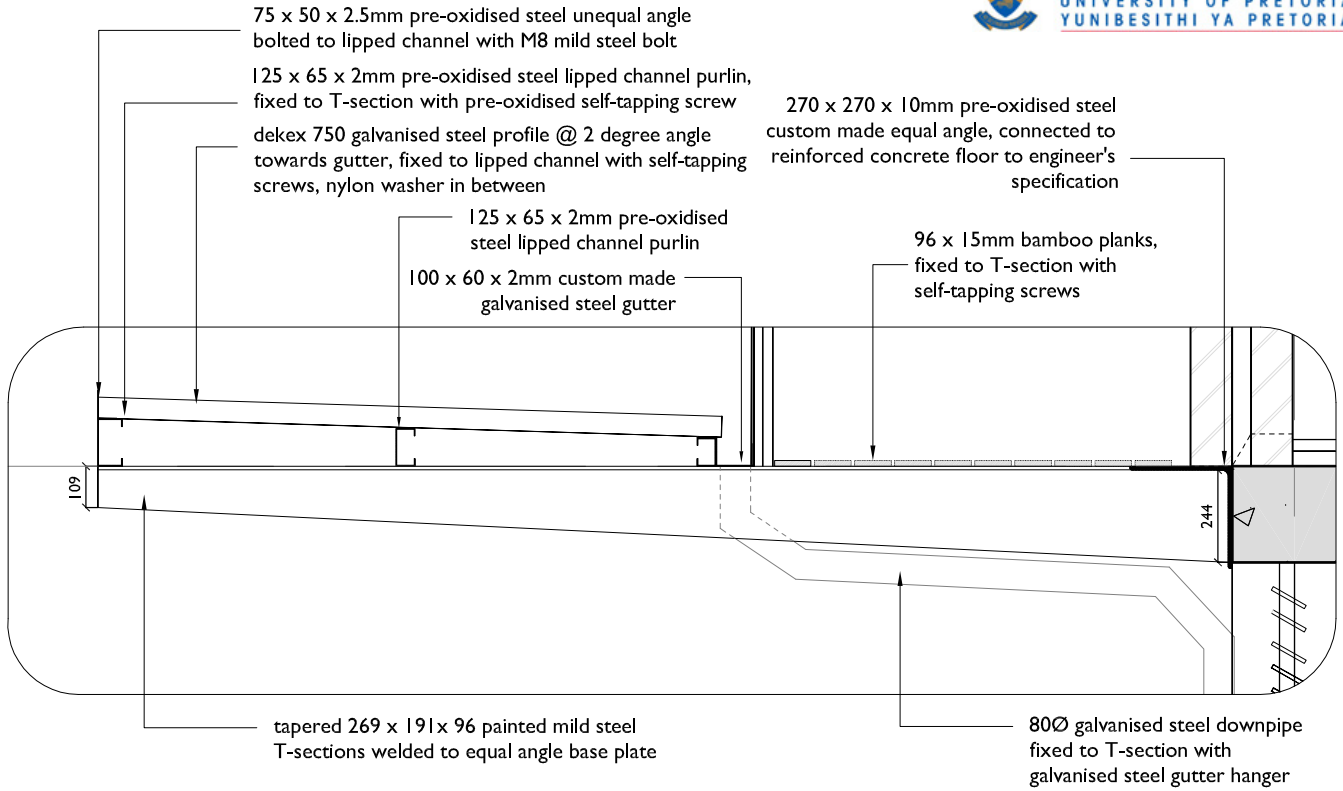
10 operable panels cut from 1 sheet, excess used for cold formed sections and hinges



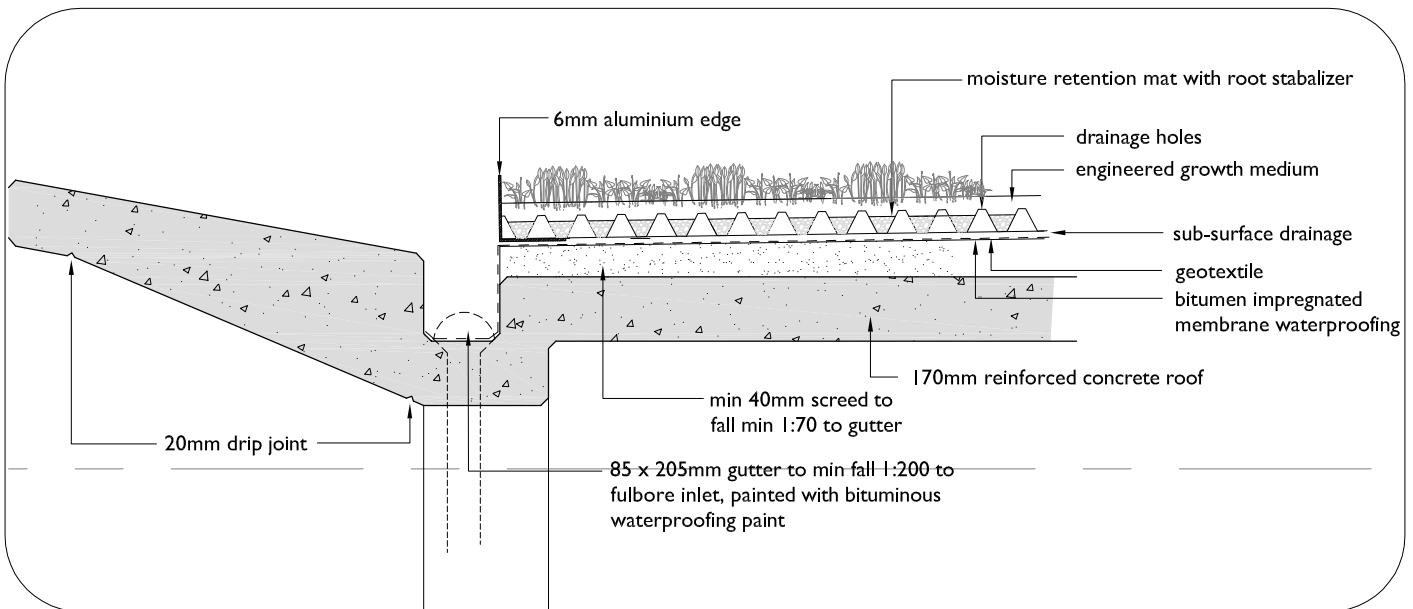
**WEATHERED STEEL SHEET
1:50**



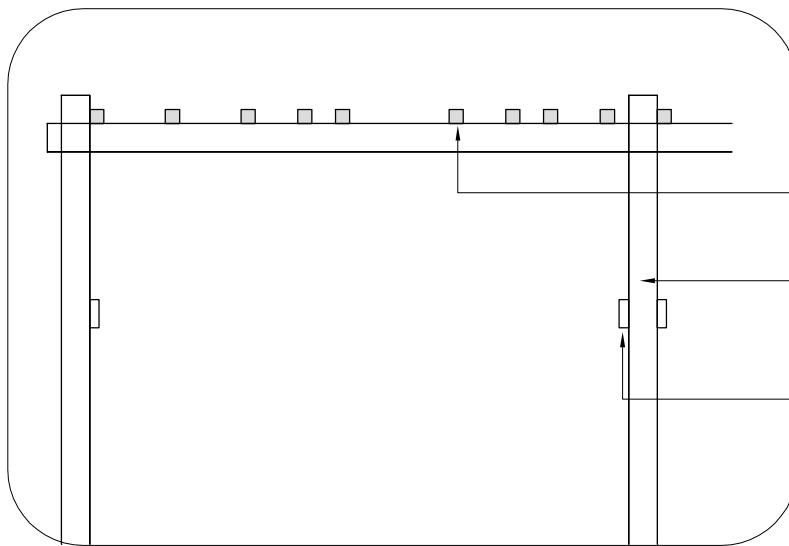
**PLAN PERFORATED WEATHERED
STEEL SKIN 1:50**



DETAIL 6
WALKWAY/CANOPY 1:20



DETAIL 7
ROOF EDGE 1:20



74 x 74mm eucalyptus microcorus timber slats, treated with a pressure impregnated preservative

75 x 150mm eucalyptus microcorus timber column, treated with a pressure impregnated preservative

50 x 150mm eucalyptus microcorus timber beam, treated with a pressure impregnated preservative

74 x 74mm eucalyptus microcorus timber slats, treated with a pressure impregnated preservative

75 x 150mm eucalyptus microcorus timber column, treated with a pressure impregnated preservative

50 x 150mm eucalyptus microcorus timber beam, treated with a pressure impregnated preservative

DETAIL 8 PERGOLA 1:20

50 x 150 x 150mm eucalyptus microcorus timber spacer, treated with a pressure impregnated preservative

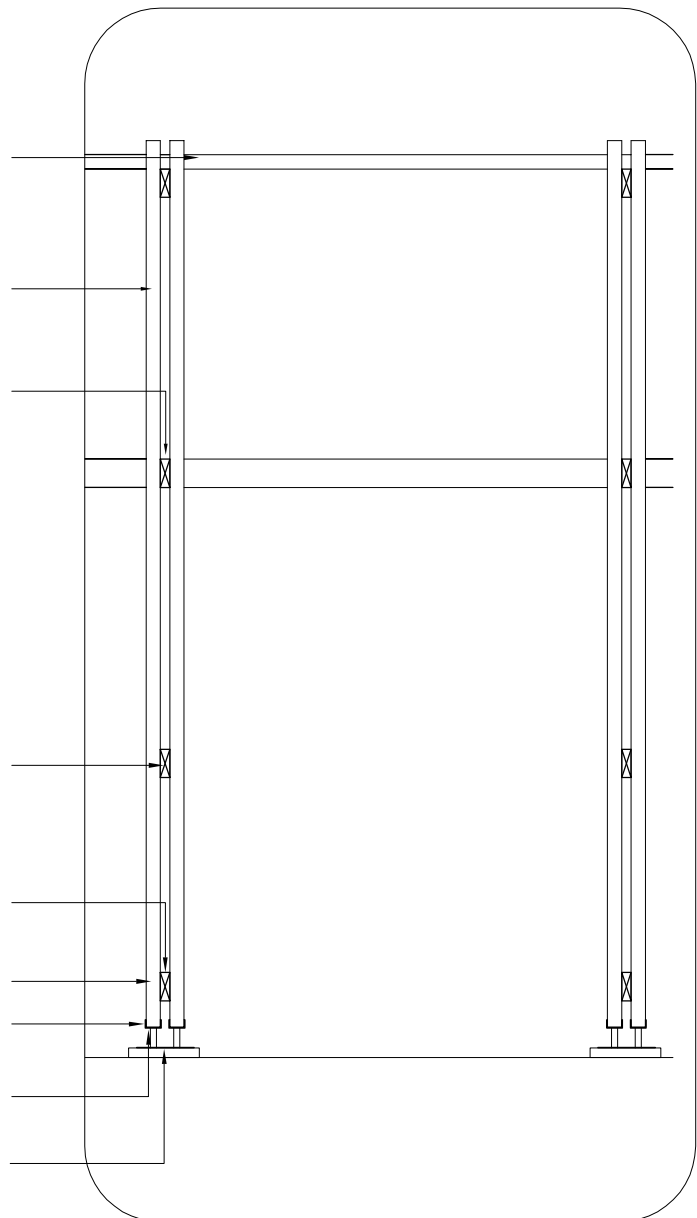
50 x 150 x 150mm eucalyptus microcorus timber spacer, treated with a pressure impregnated preservative

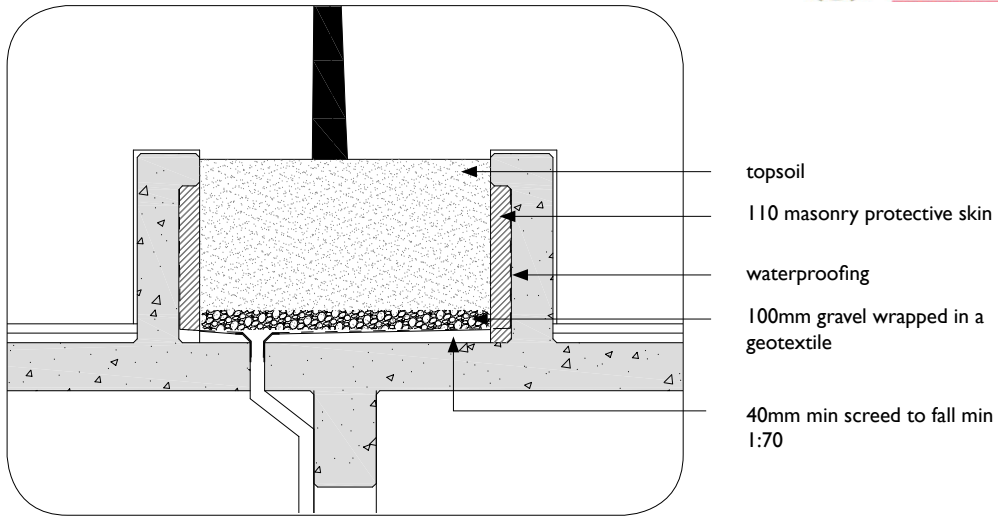
timber column fixed to steel channel with galvanised steel M10 bolt with cap nut

40 x 75 x 4.5mm painted mild steel channel, welded to hollow section

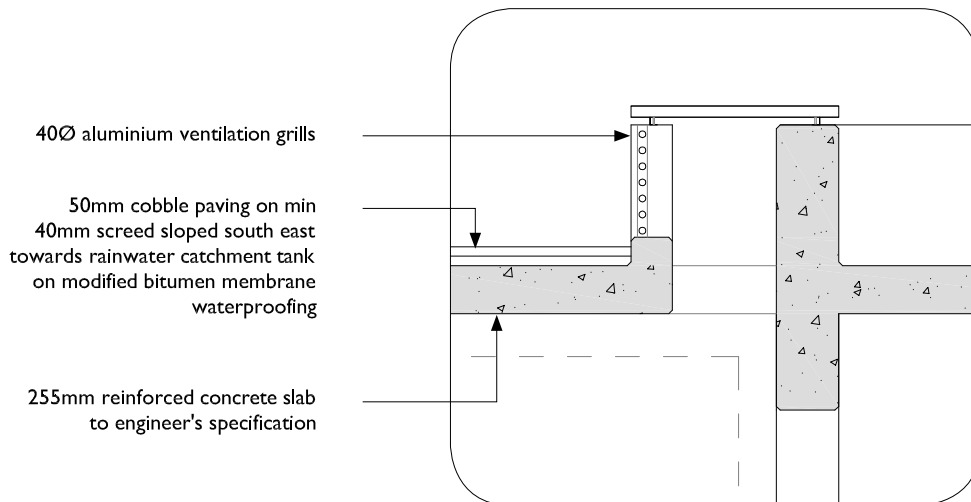
32Ø x 2mm painted mild steel circular hollow section, welded to base plate

300 x 300 x 4mm painted mild steel base plate, anchor bolted to 400 x 400 x 50mm concrete base plate





**DETAIL 9
PLANTER 1:20**



**DETAIL 10
AIRVENT/POND EDGE/SEAT 1:20**

