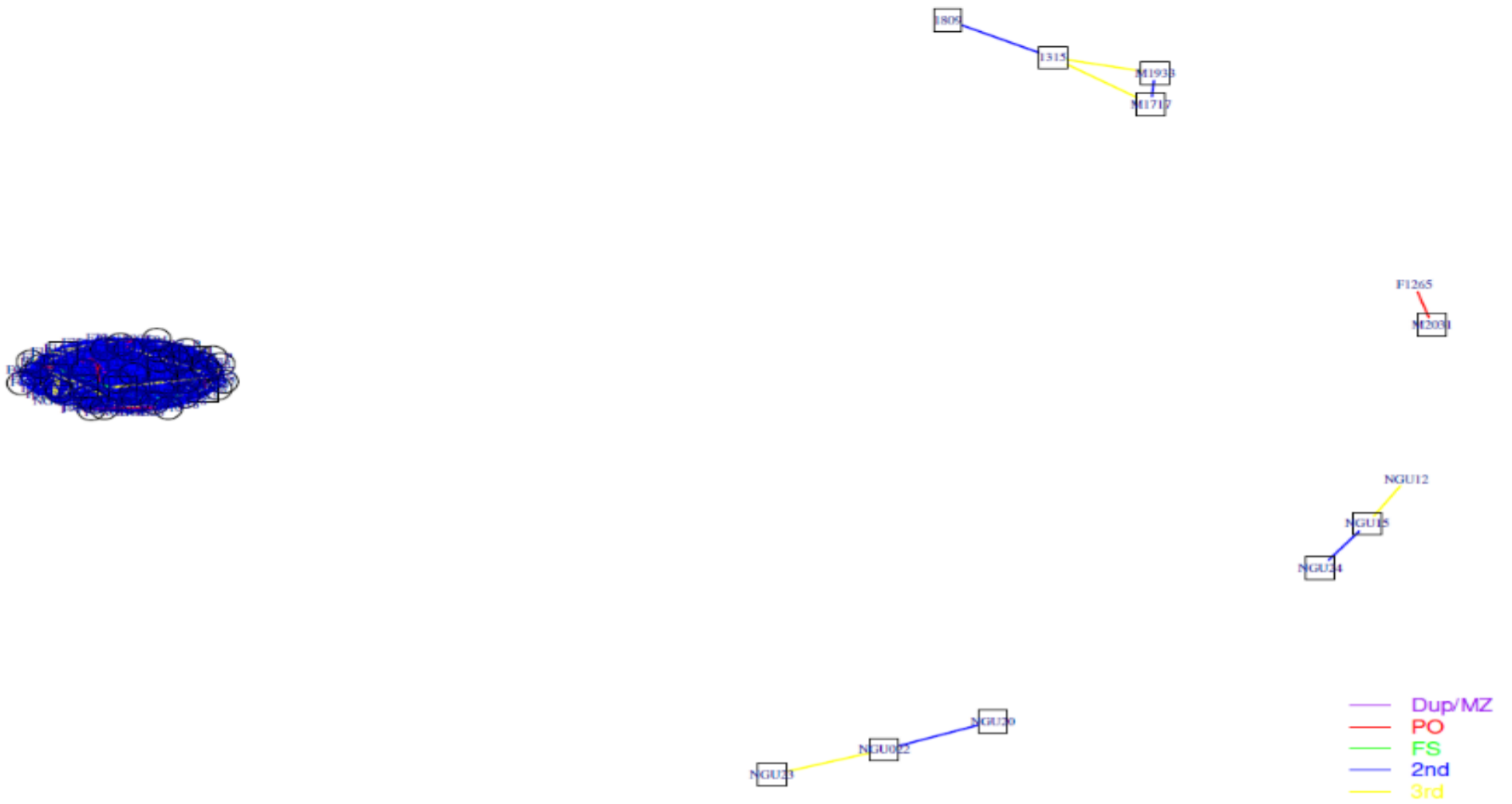


Nguni



Bonsmara

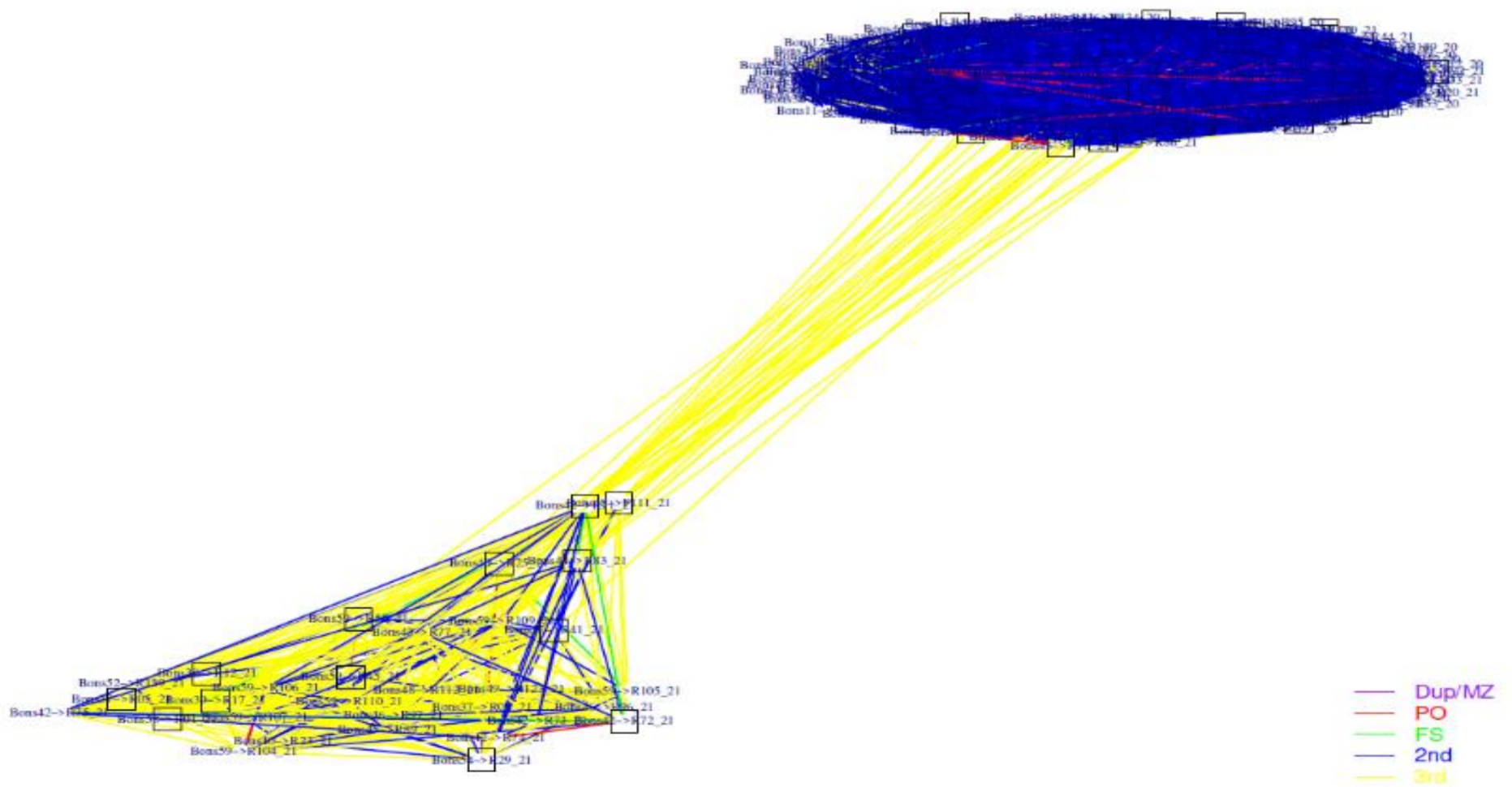


Figure S1. Genomic relatedness cluster using KING program for Nguni and Bonsmara breed. Relationship is connected by color coded line showing type of relationship from twinz (MZ) = purple, parent-offspring (PO) = red, full siblings (FS) = green, second degree (2nd) = blue and third degree (3rd) = yellow for Nguni and Bonsmara breed