

Appendix B: Visualisation of environmental data

Foraging behaviour of Weddell seals (*Leptonychotes weddellii*) in connection to oceanographic conditions in the southern Weddell Sea

Dominik A. Nachtsheim^{a,b,c,*}, Svenja Ryan^a, Michael Schröder^a, Laura Jensen^a, W. Chris Oosthuizen^d, Marthán N. Bester^d, Wilhelm Hagen^c, Horst Bornemann^a

^a Alfred-Wegener-Institut, Helmholtz-Zentrum für Polar- und Meeresforschung, Am Handelshafen 12, 27570 Bremerhaven, Germany

^b present address: Institute for Terrestrial and Aquatic Wildlife Research, University of Veterinary Medicine Hannover, Werftstrasse 6, 25761 Büsum, Germany

^c BreMarE - Bremen Marine Ecology, Marine Zoology, University of Bremen, P.O. Box 330440, 28334 Bremen, Germany

^d Mammal Research Institute, Department of Zoology and Entomology, University of Pretoria, Private Bag X20, Hatfield, Pretoria 0028, South Africa

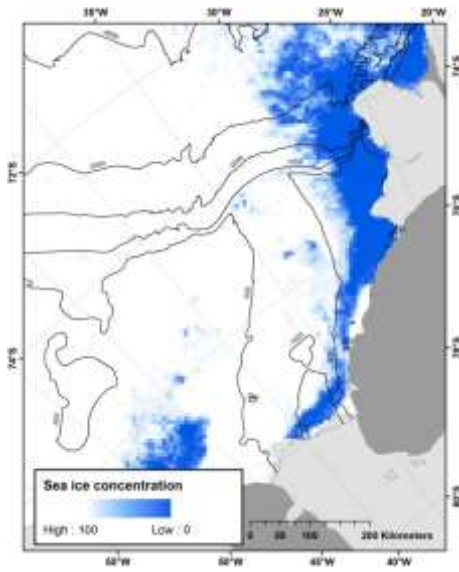
* corresponding author: Dominik A. Nachtsheim

e-mail: dominik.nachtsheim@tiho-hannover.de

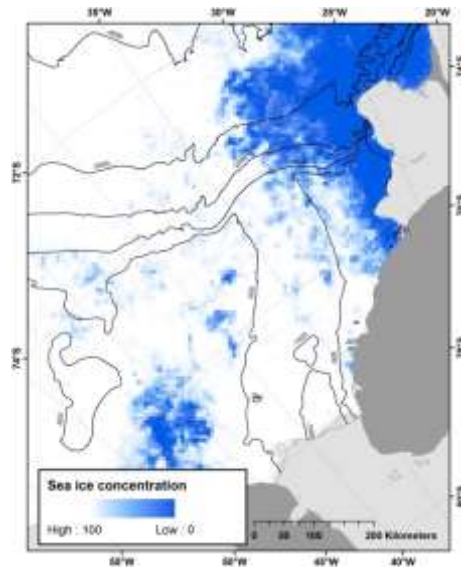
telephone: +49 511 856-8159

fax: +49 511 856-8181

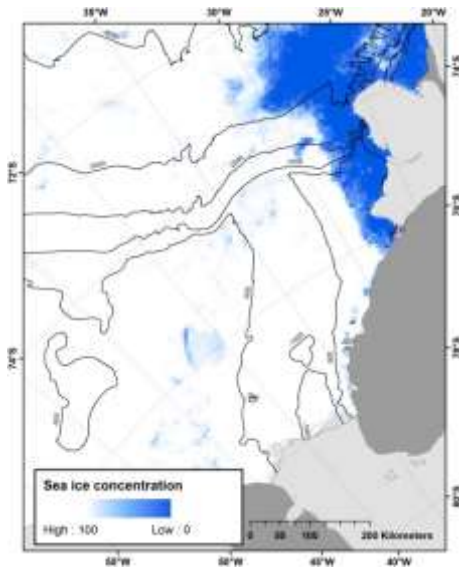
01/01/2014



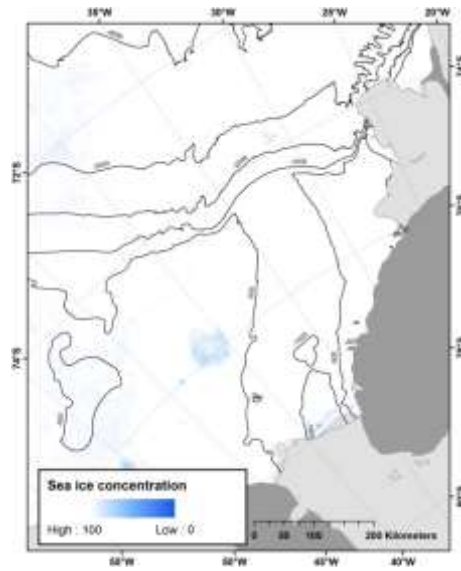
01/02/2014



01/03/2014



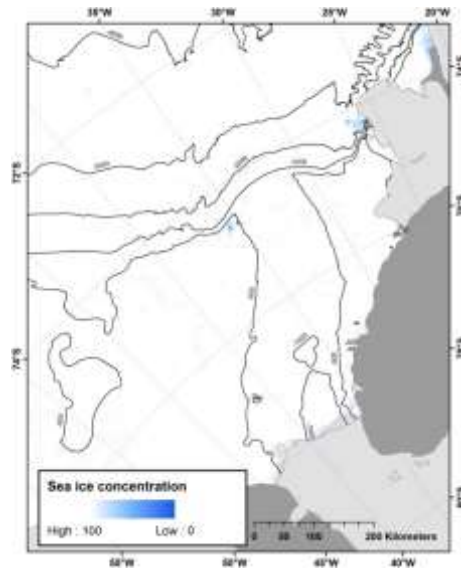
01/04/2014



01/05/2014



01/06/2014



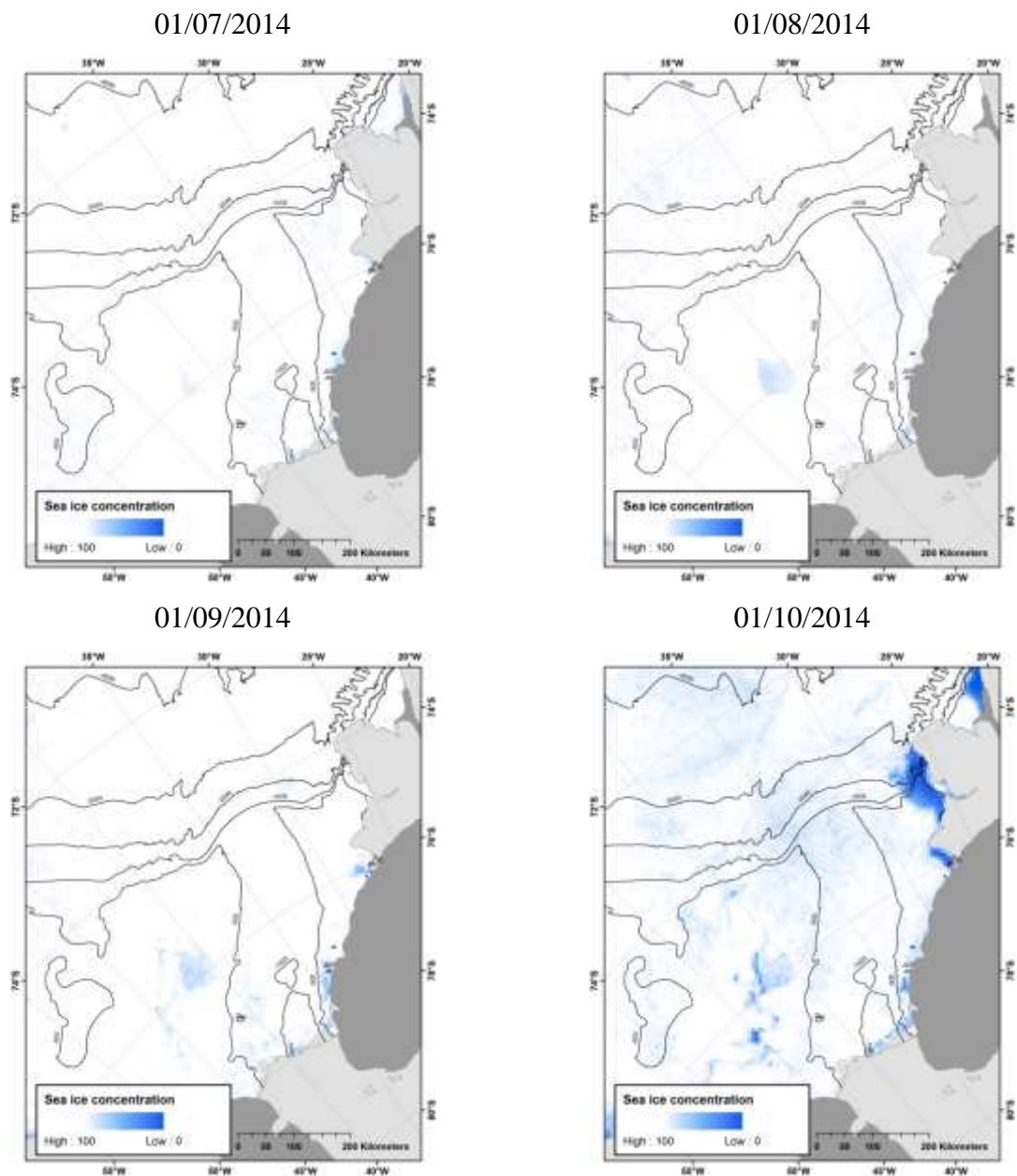
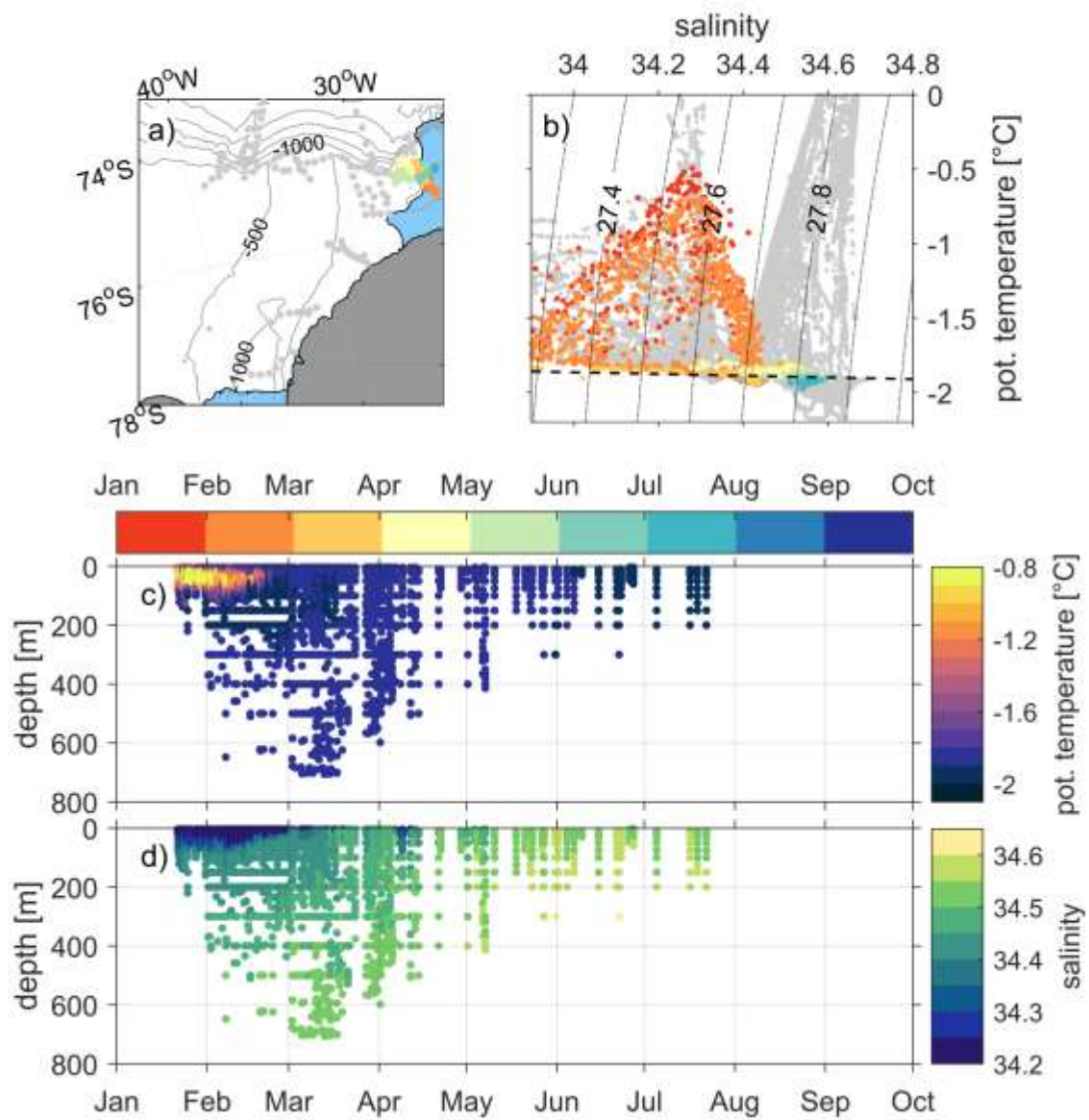
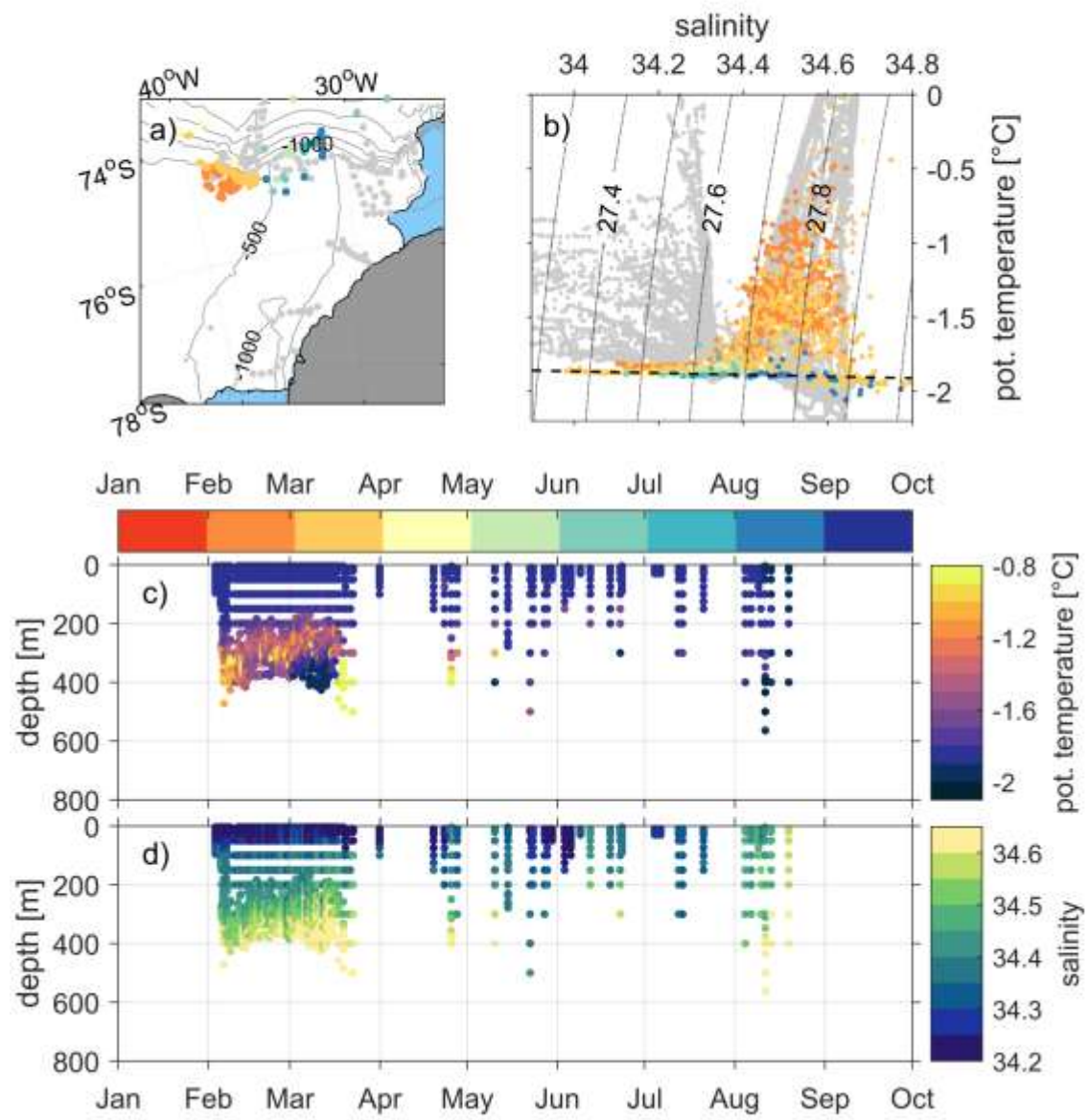


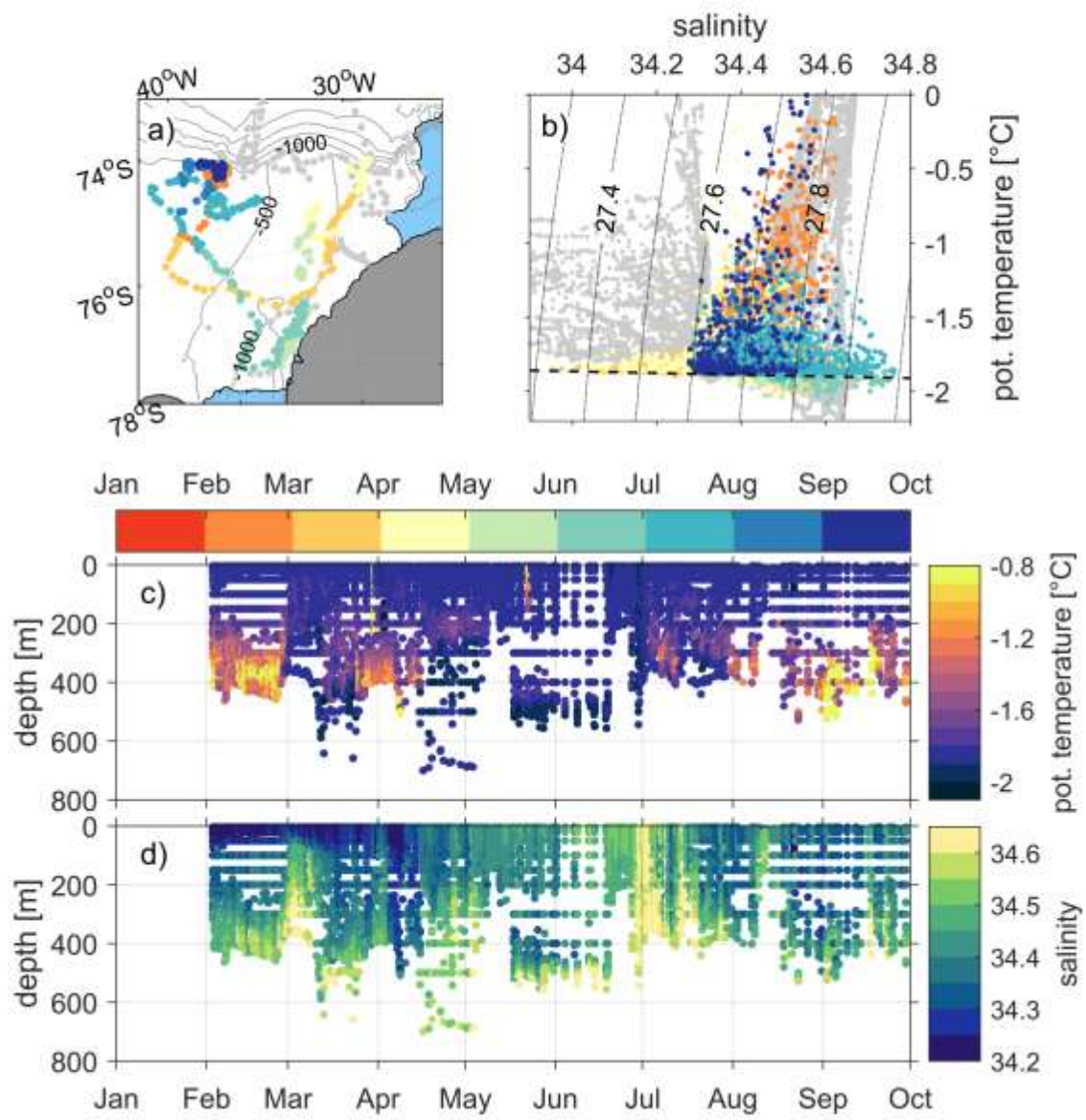
Fig. B.1 Maps of sea ice concentration in the Filchner Outflow System (FOS) over the course of the study period (January – October 2014). For demonstration purposes, only maps of the first day of each month are displayed. Bathymetry is indicated by *black* contour lines.



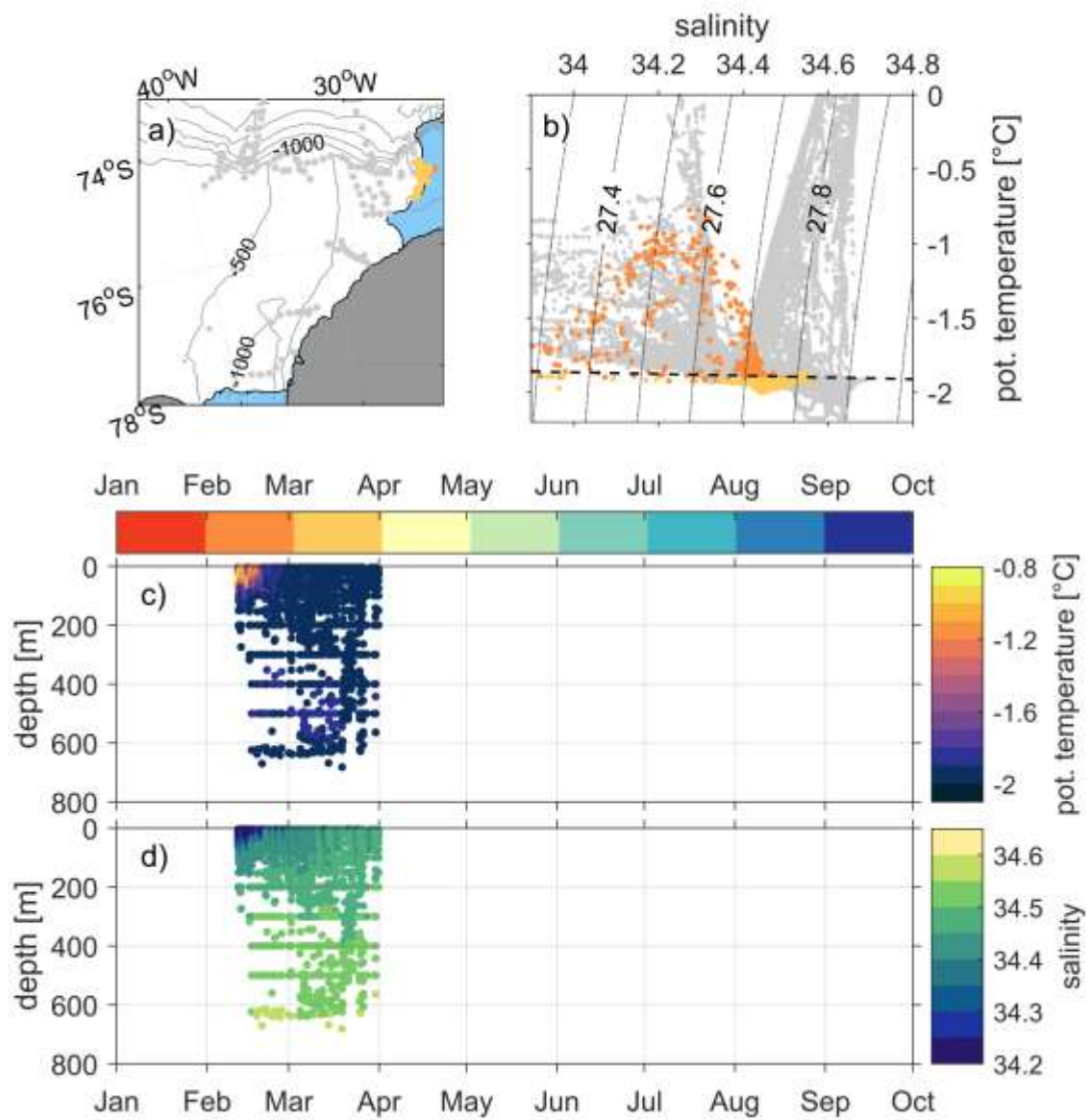
FIL2014_wed_a_f_01



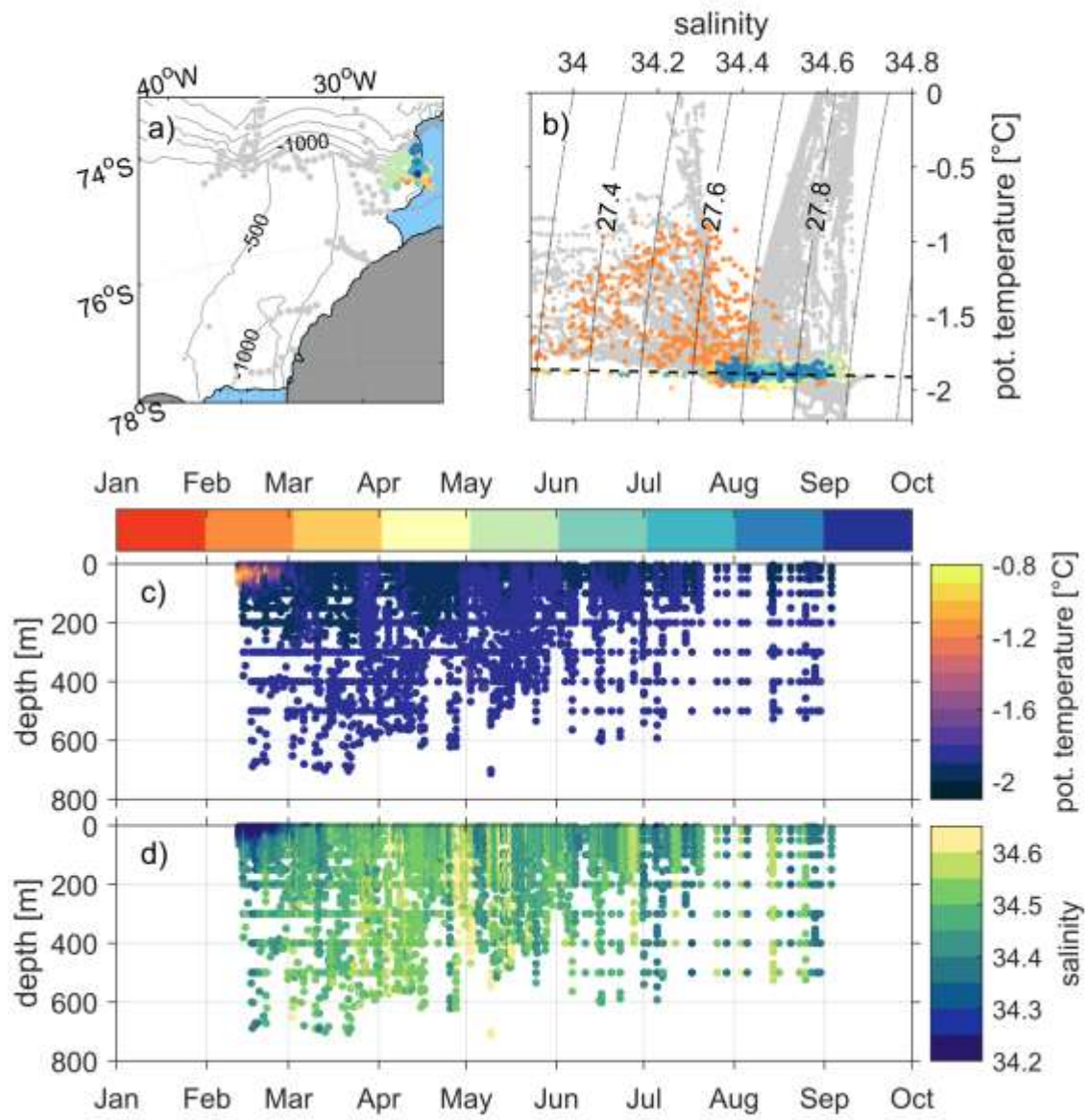
FIL2014_wed_a_m_03



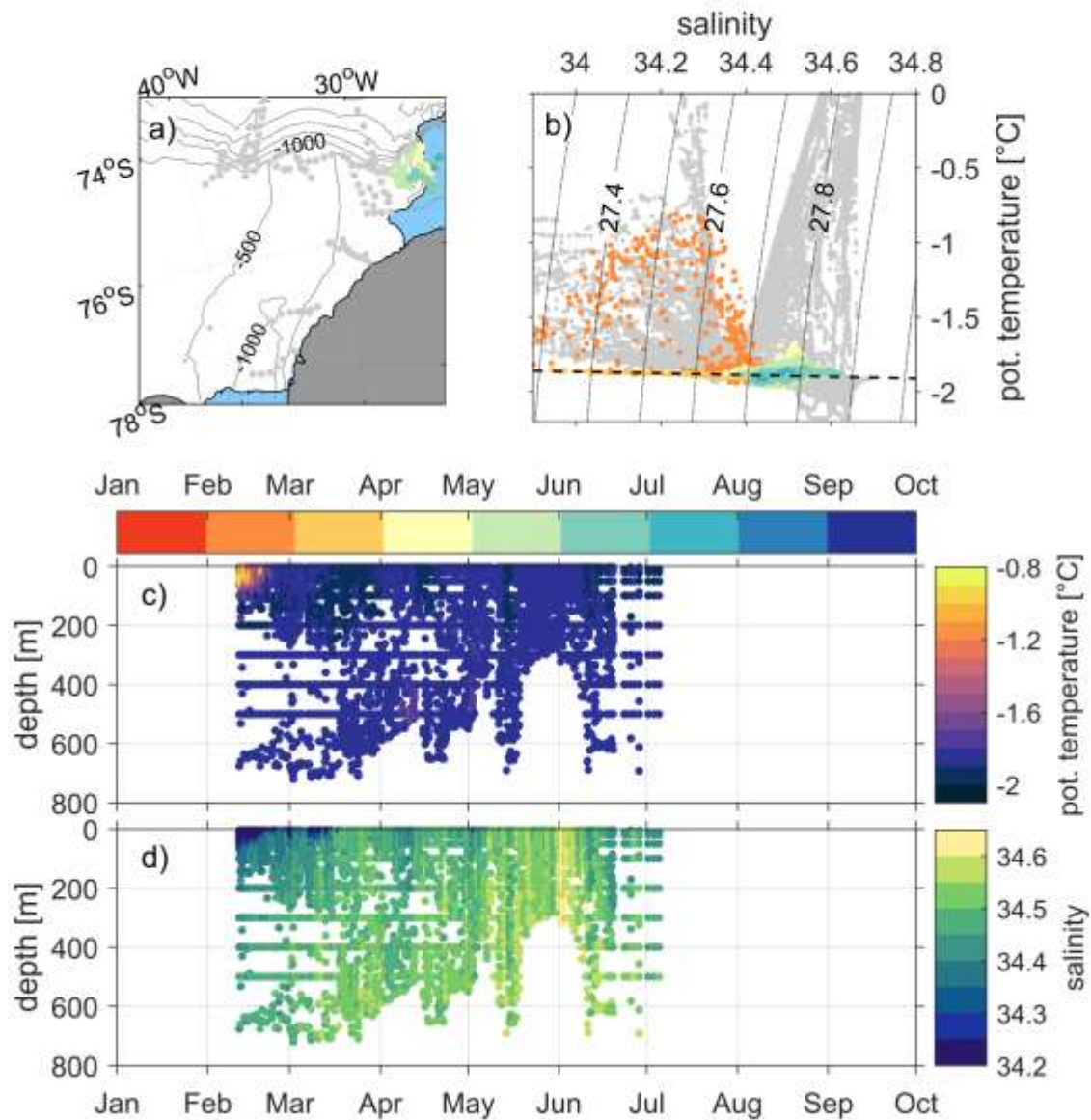
FIL2014_wed_a_f_04



FIL2014_wed_a_f_05



FIL2014_wed_a_f_06



FIL2014_wed_a_f_07

Fig. B.2 Individual tracks (a) and temperature-salinity diagrams (b) of the six tagged Weddell seals in the FOS. (b) The colour code illustrates the progression of time, indicating in which month which areas were visited and which oceanographic conditions were encountered. Grey dots in (a) illustrate the locations of CTD-stations by *Polarstern* during PS82, while grey dots in (b) indicate temperature and salinity measurements from the respective ship-borne CTD

profiles. Temperature (c) and salinity (d) profiles for each seal are also shown separately over the course of the study period.

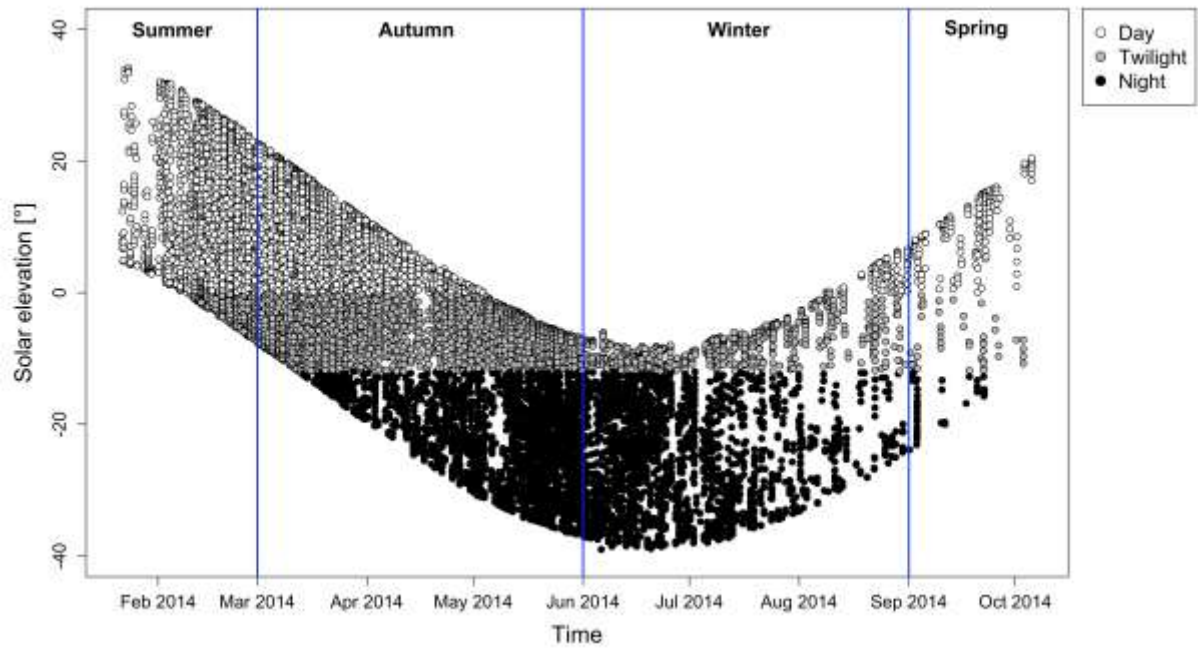


Fig. B.3 Seasonal variation of solar elevation at the time of each dive between January and October 2014. Colours indicate if the respective dive took place at day (*white* dots; solar elevation above 0°), twilight (*grey* dots; solar elevation between 0° and -12°) or night (*black* dots; solar elevation below -12°). *Blue* solid lines illustrate the borders of each season.