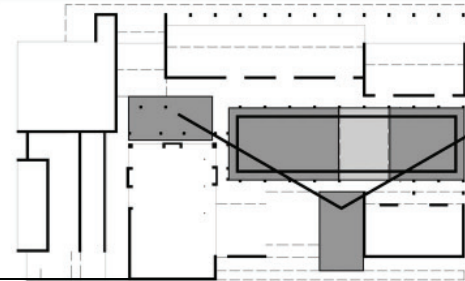
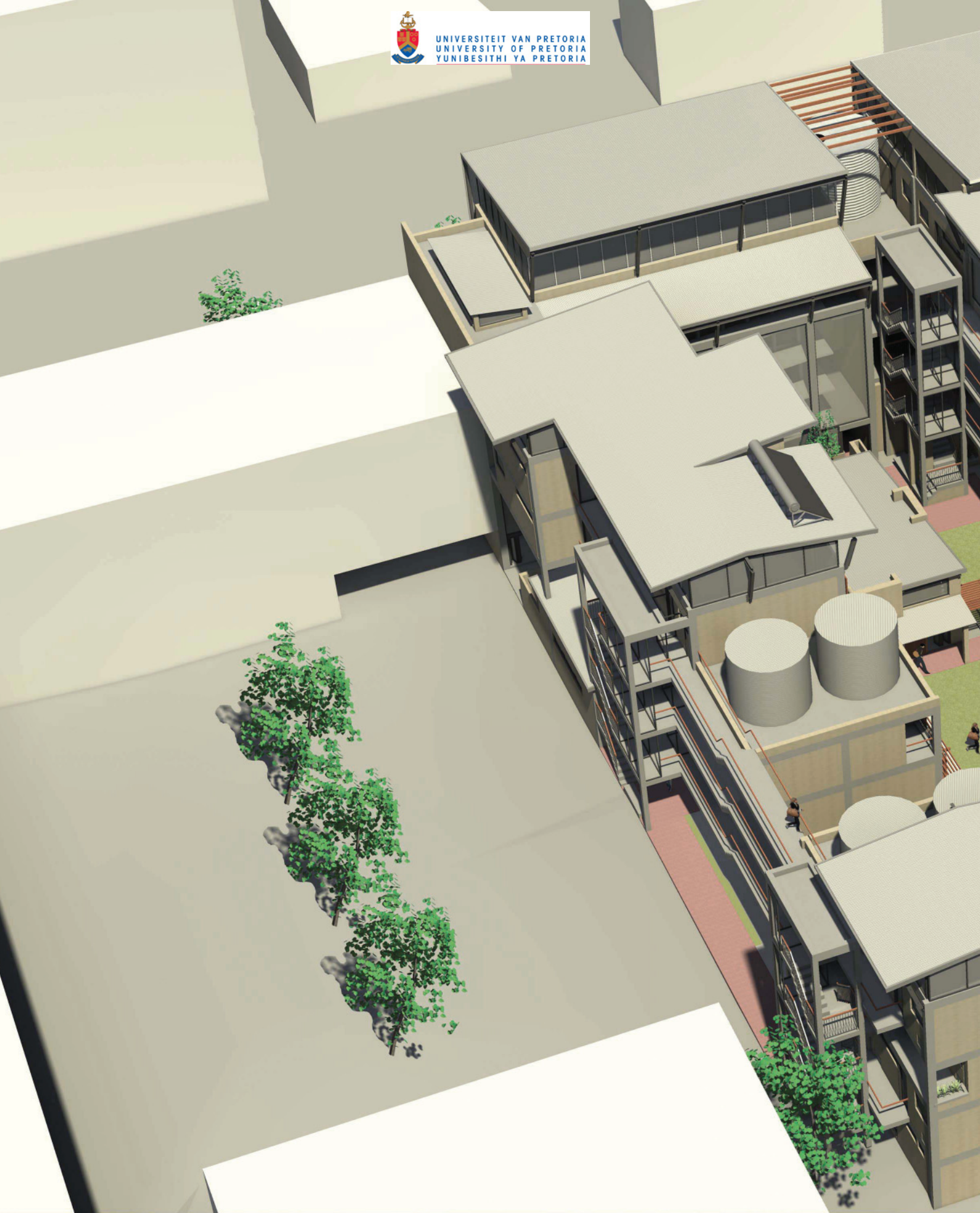


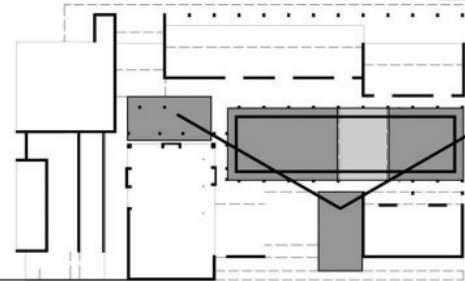
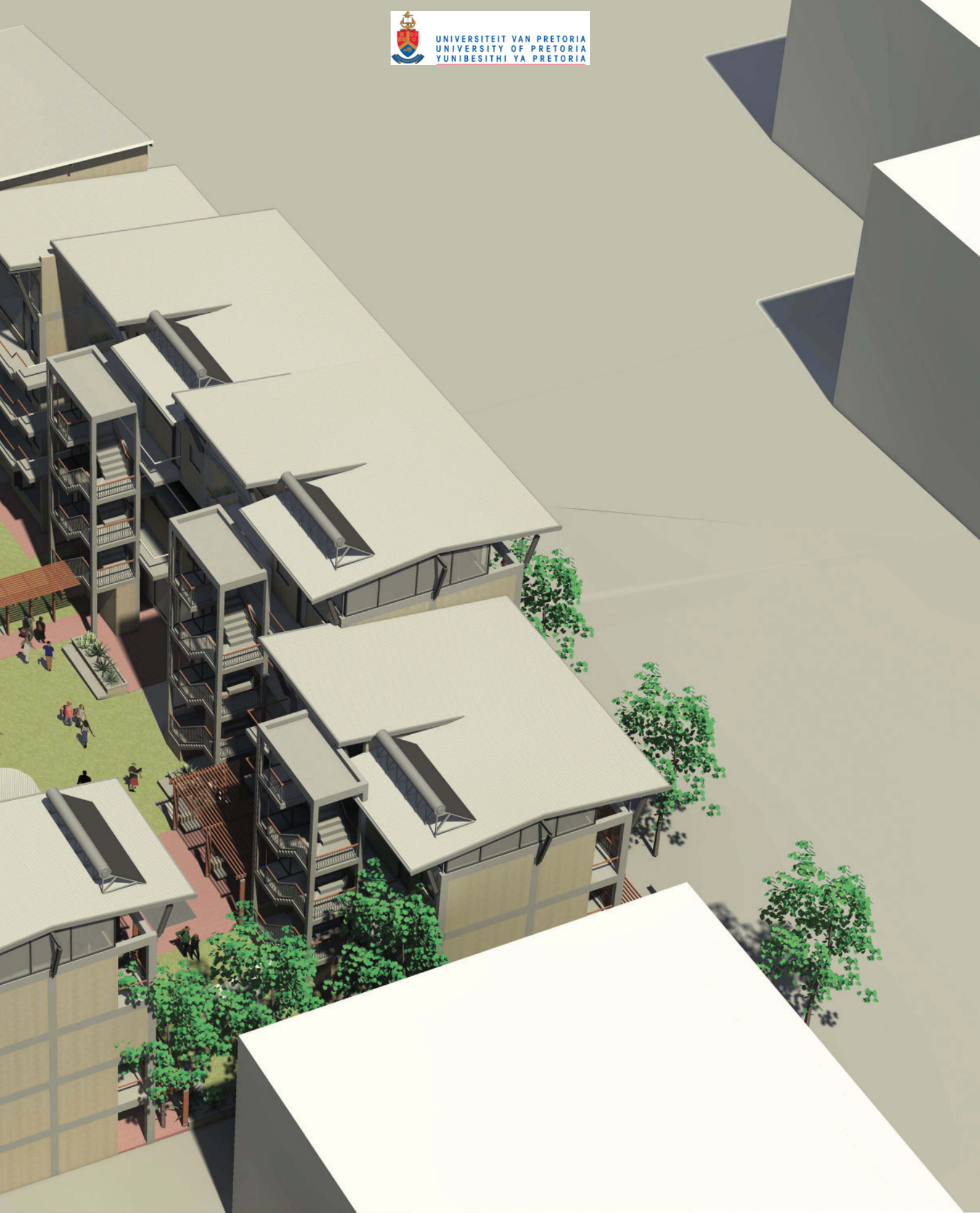


## North- West Corner



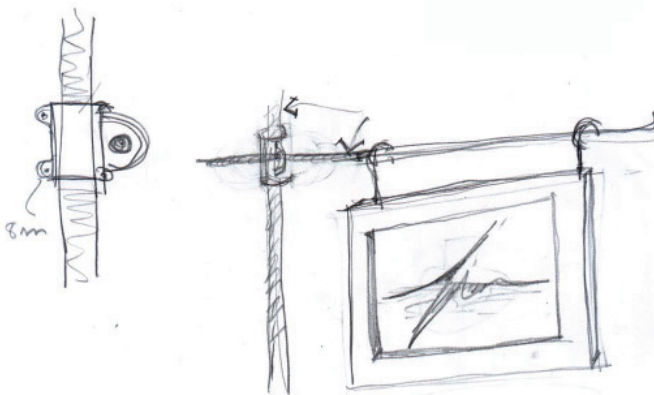
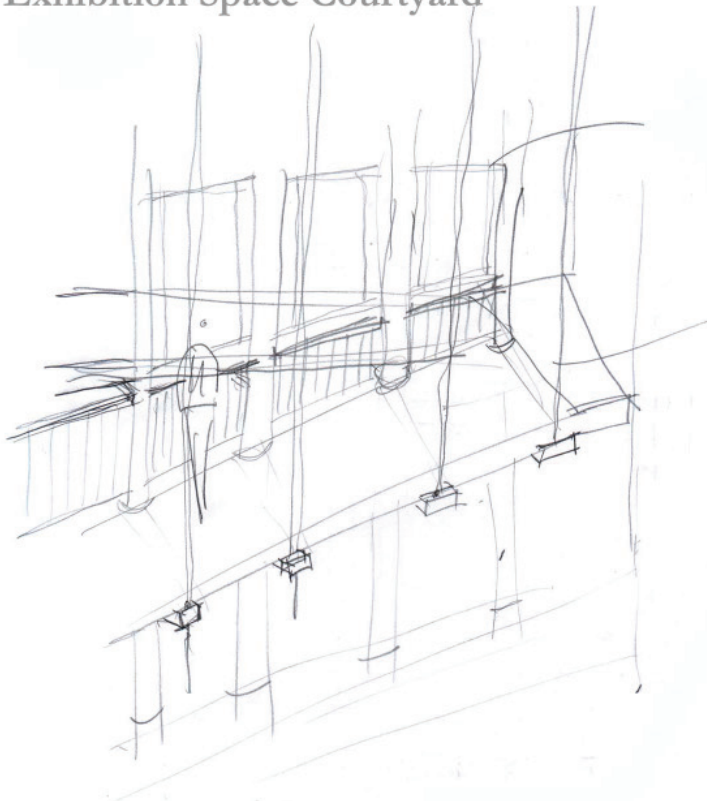


## South- East Corner





Exhibition Space Courtyard

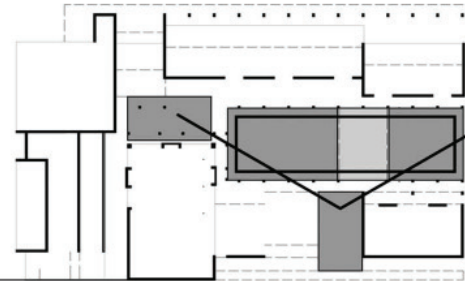


Exhibition Space Ramp





## West Elevation

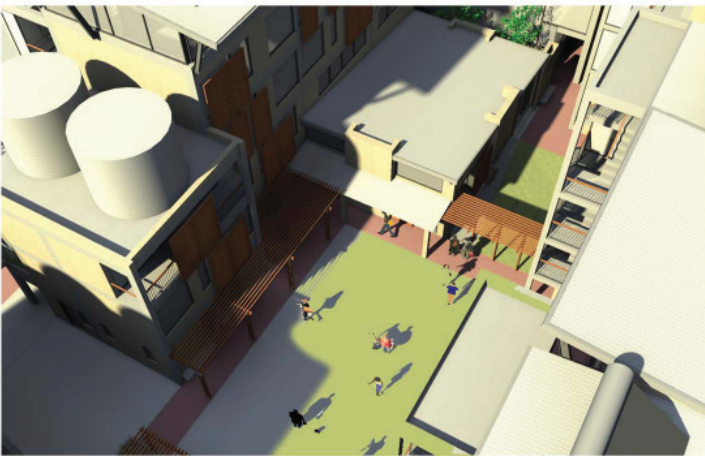




Dining Hall & Ramp



Courtyard

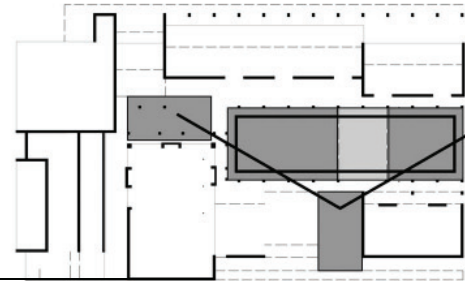


Courtyard

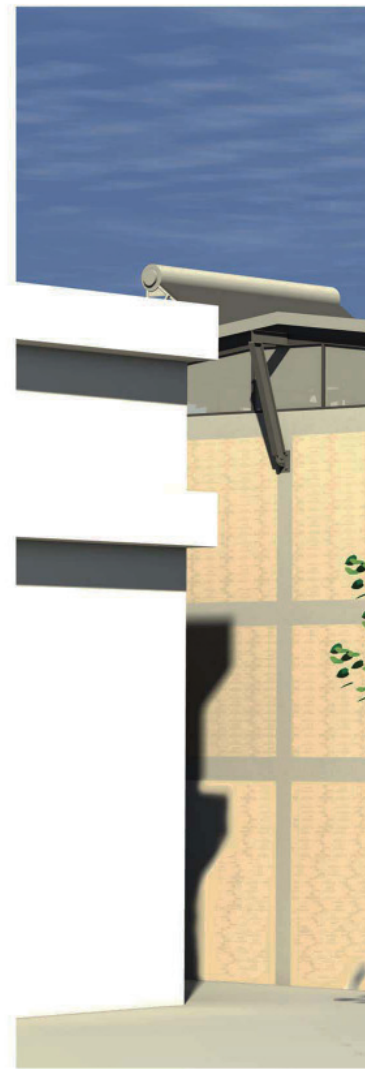




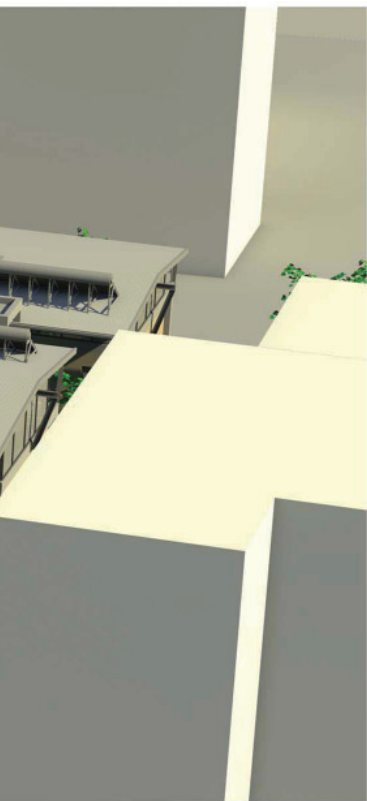
# Courtyard



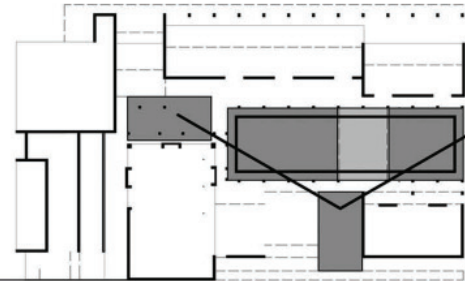
# North- East Corner



3 Dimensional views



## South Elevation

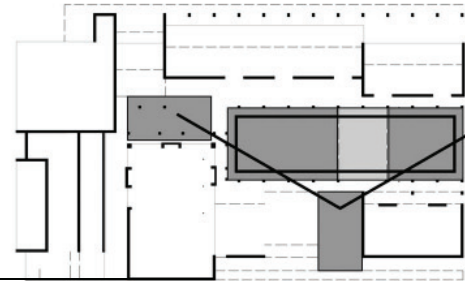






**North Elevation**

**Bird's eye view**





## North Elevation in Context



roof sloped down to street protecting shelter  
from northern sun and public street

roof construction curves down protecting the  
entrance of the shelter & façades from western sun

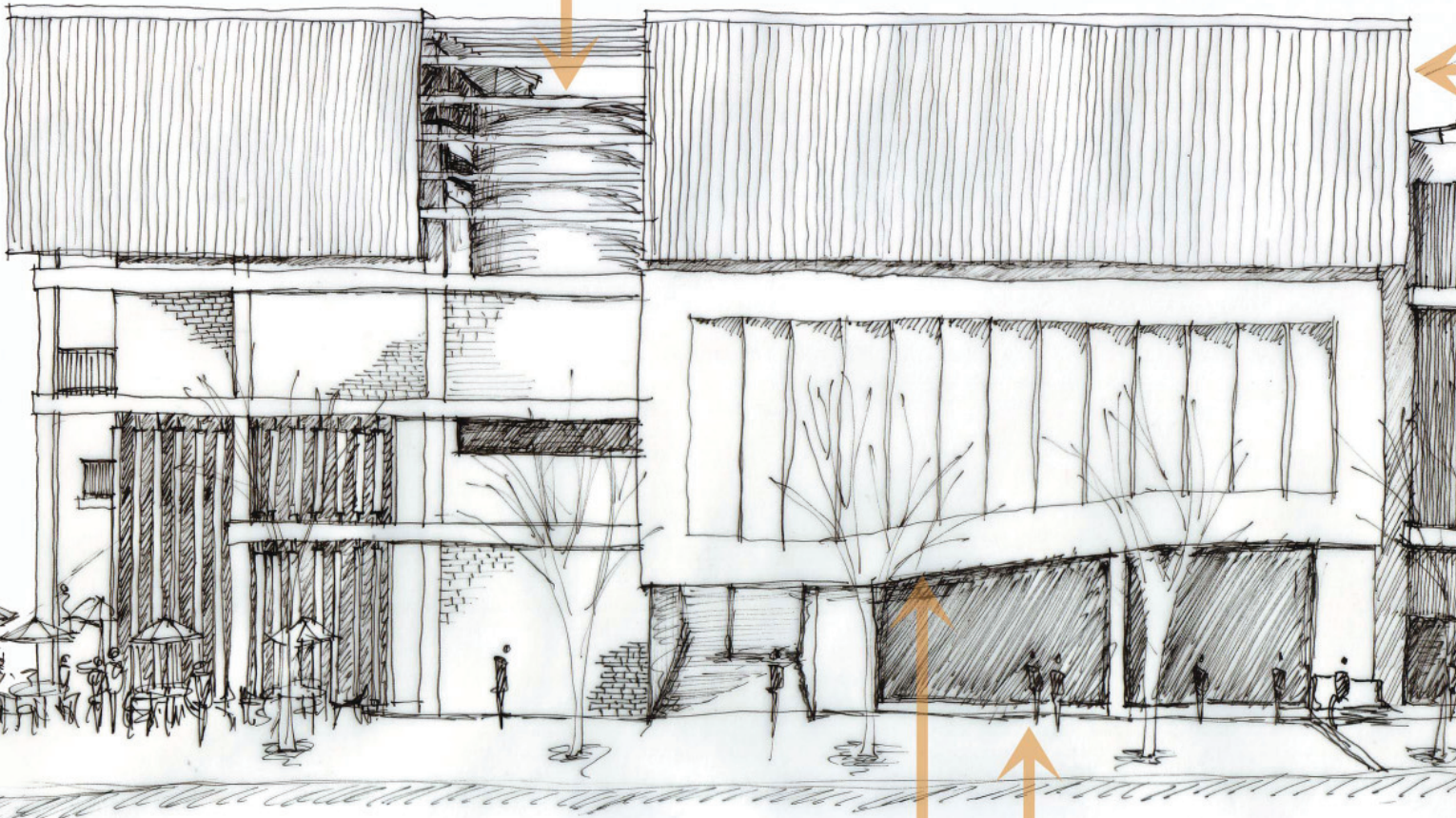
larger glazed area on prominent corner

screened glazed reception area creation **transitional**  
zone that is transparent but yet protected





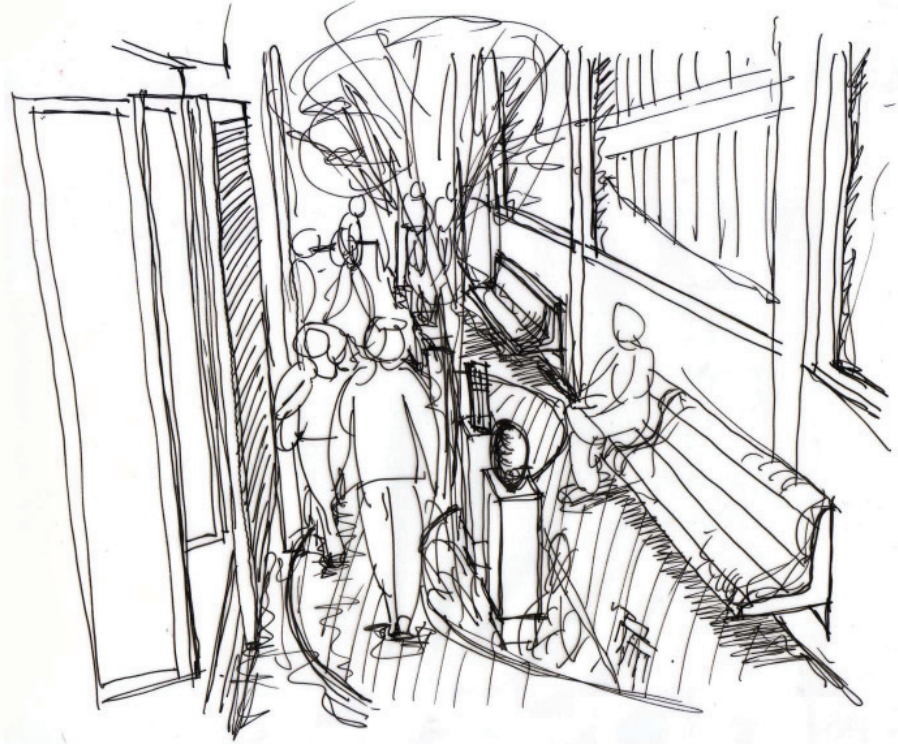
rain water collection tanks, used to water the food garden, expressed in the facades to promote awareness of water conservation



shop fronts edge streets to activate residence and greater community

auditorium expressed on façade  
“advertising” educational

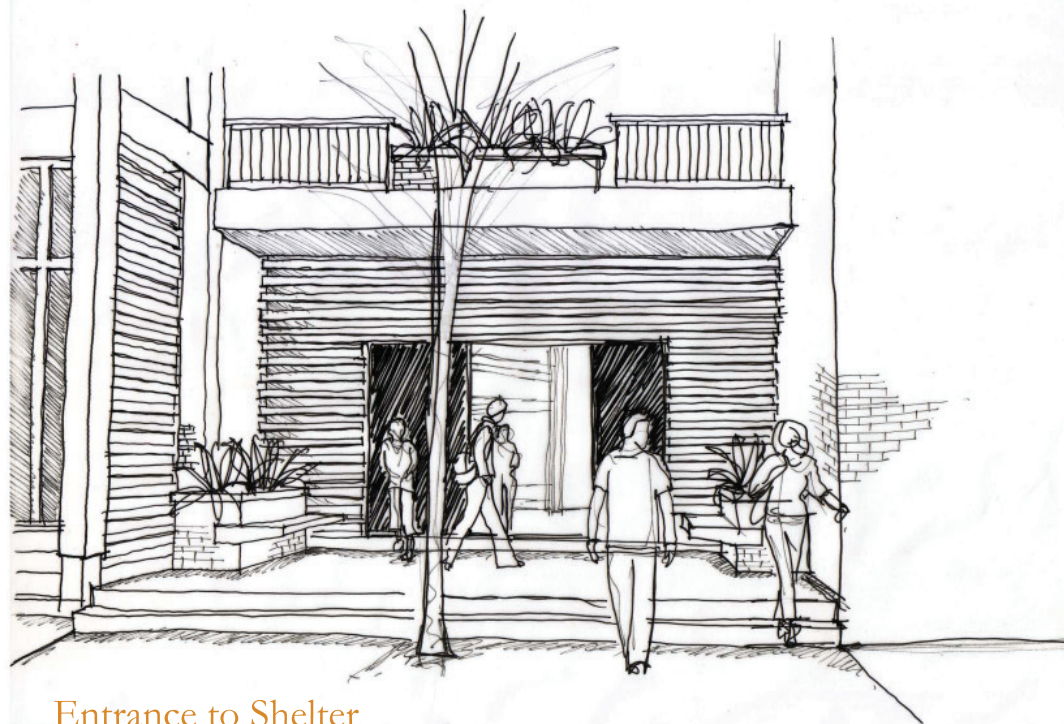
## West Elevation



Exhibition Space

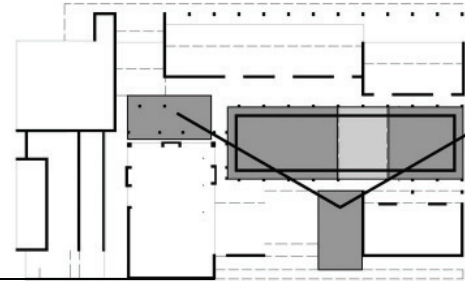
roof construction  
**independent**

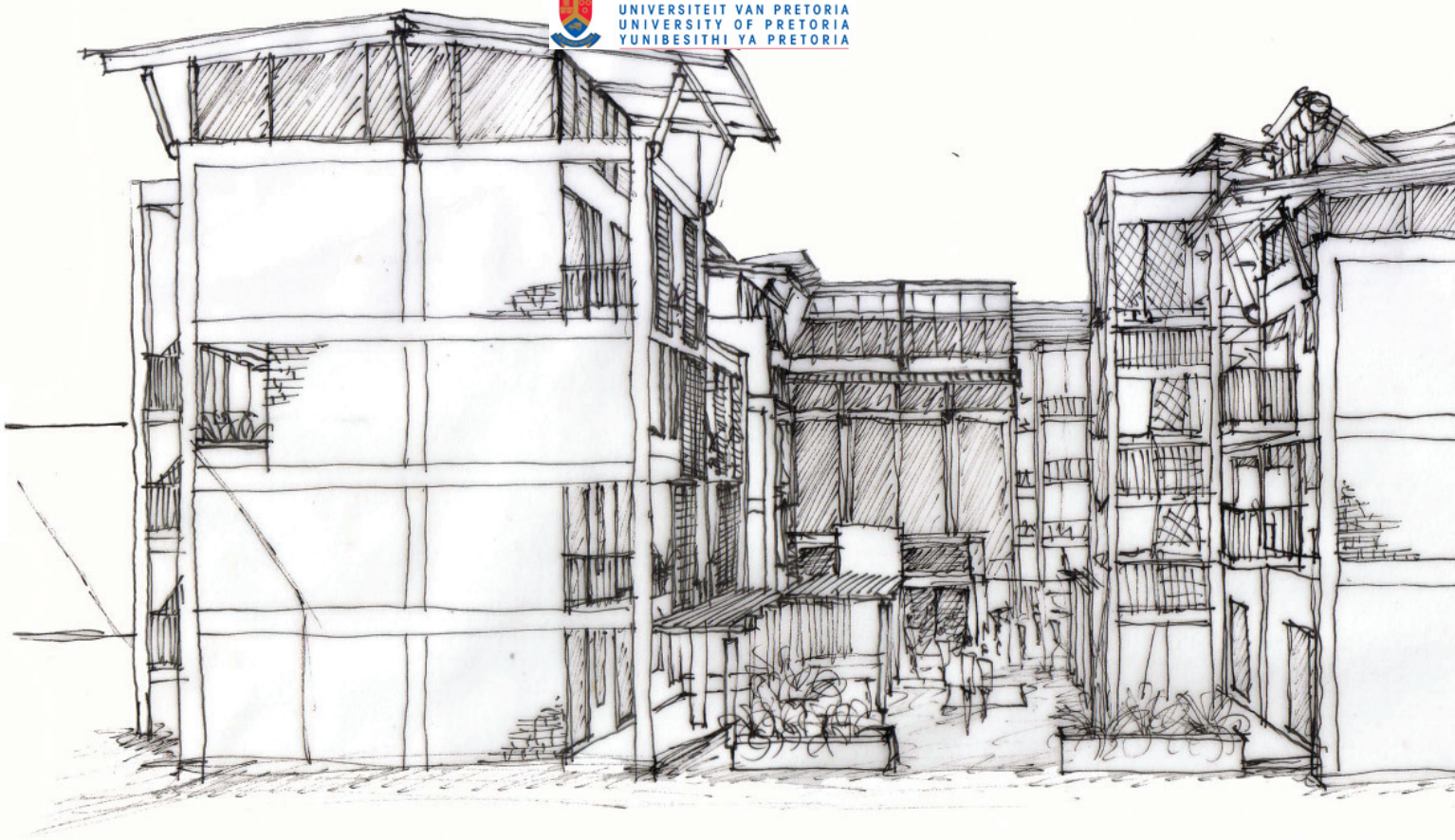
from structure curves down  
becoming dependent and  
protects



Entrance to Shelter

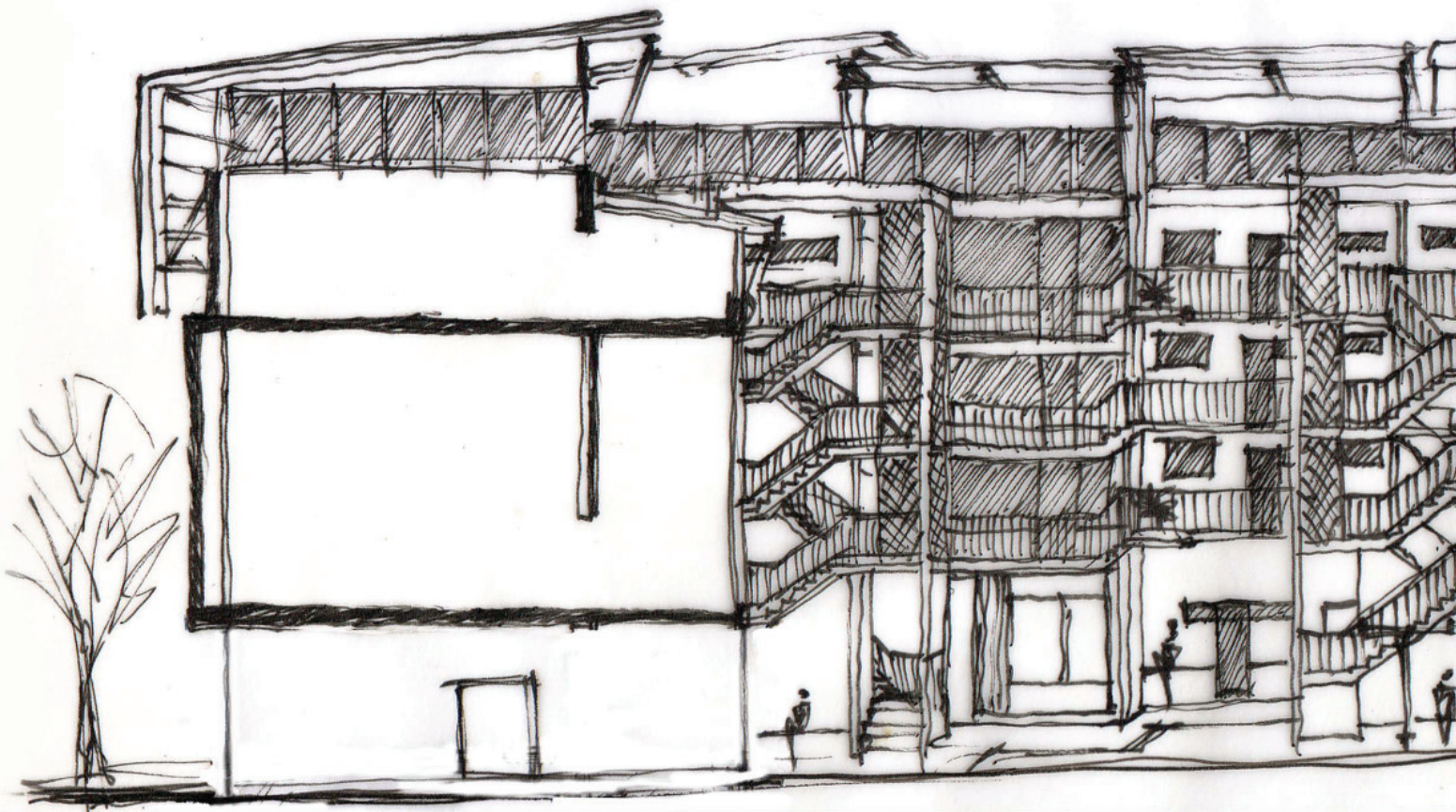
sidewalks & interaction between  
promoted – **connection**



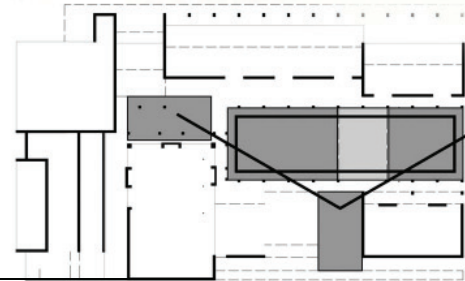
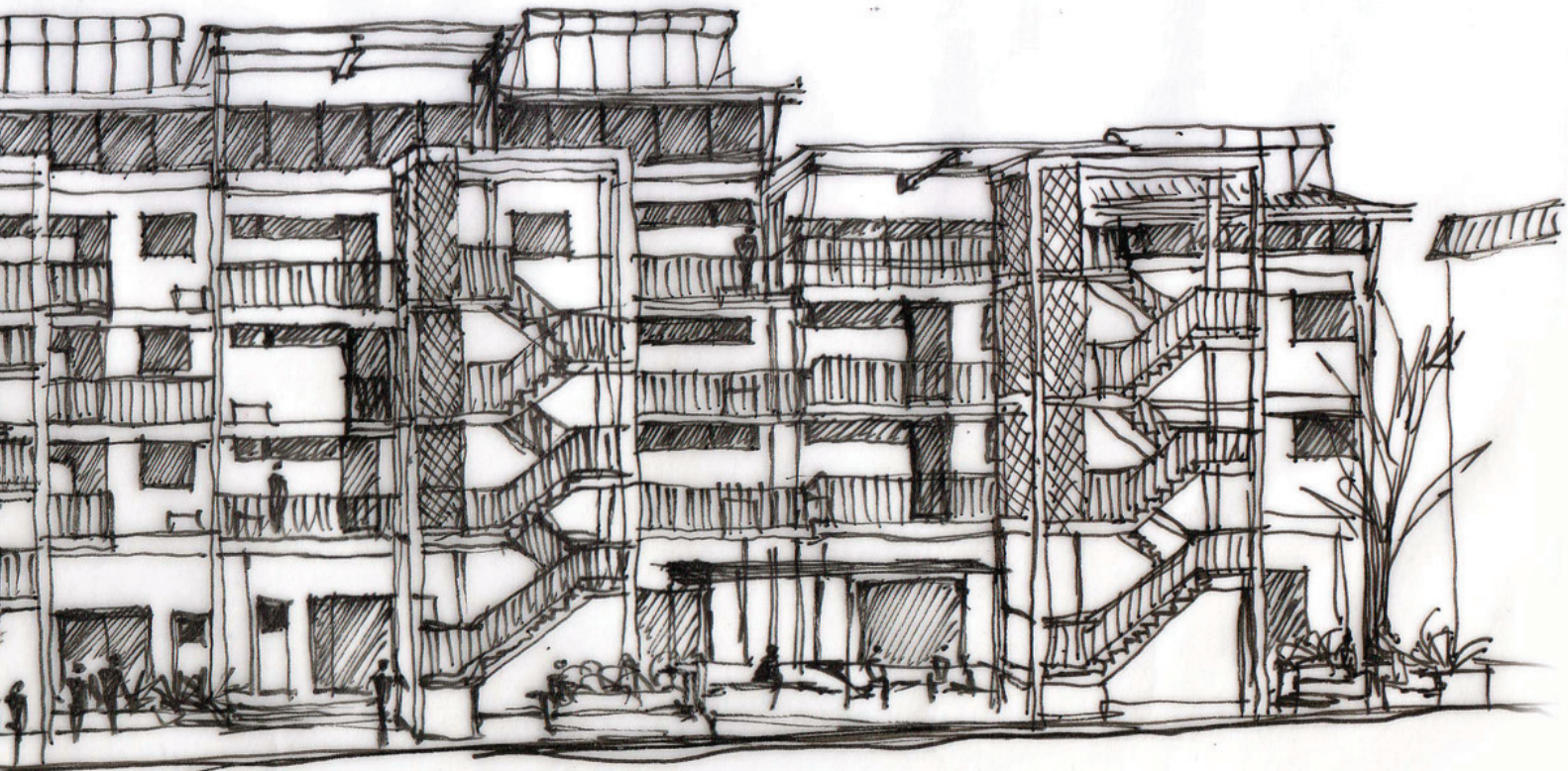


**East Elevation**

---

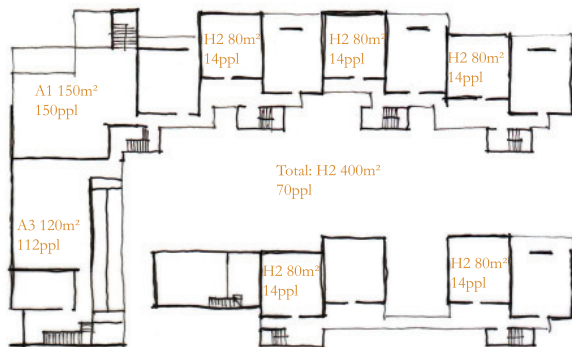


**Internal South Elevation**





**Ground floor plan**



**First floor plan**

**Class of occupancy & population**

**EDUCATIONAL Community Centre:**

**A3: Places of instruction**

Occupancy where school children, students or other persons assemble for the purpose of tuition or learning.  
Population; Number of fixed seats or 1 person per 4m<sup>2</sup>

**WORKSHOPS AND SHOPS:**

**B3: Low risk commercial service**

Occupancy where a non-industrial process is carried out and where neither the material handled nor the process carried out falls into the high or moderate risk category.  
Population; 1 person per 10 m<sup>2</sup>

**F2: Small shop**

Occupancy where merchandise is displayed and offered for sale to the public and the floor area does not exceed 250 m<sup>2</sup>

Population; 1 person per 4 m<sup>2</sup>

**RESTAURANT/ CAFÉ:**

**A1: Entertainment and public assembly**

Occupancy where persons gather to eat, drink, dance or participate in other recreation  
Population; 1 person per m<sup>2</sup>

**HOMELESS SHELTER:**

**H2: Dormitory**

Occupancy where groups of people are accommodated in one room.

Population; 1 person per 5 m<sup>2</sup>

49x 40m<sup>2</sup> = 1840m<sup>2</sup>

Max residential population: 322ppl

AVERAGE POPULATION: 200PPL



**Typical floor plan**

**Provision of fire hydrants**

**Hydrants**

In accordance to TT35, SABS 1128: Part ii

Hydrants required for building exceeding 12m in height  
Hydrant to be provided with a length of appropriate fire hose **24 m** in length together with couplings and a 16 mm internal diameter nozzle

**Portable fire extinguishers: TT37**

A3, F2, A1, H2: 1 per 200m<sup>2</sup>, 4.5kg dry chemical portable fire extinguisher

B3: 1 per 400m<sup>2</sup>, 9kg dry chemical portable fire extinguisher

**Fire Protection:**

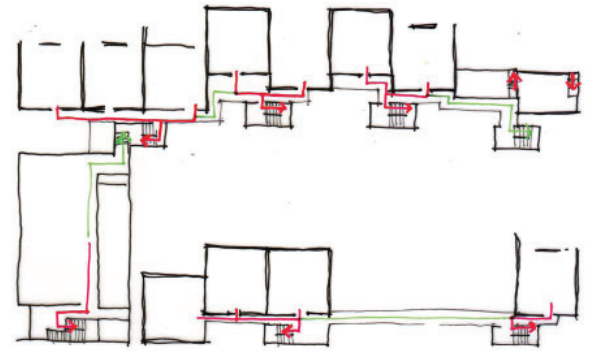
in accordance with SABS 0400 – NBR – Part T



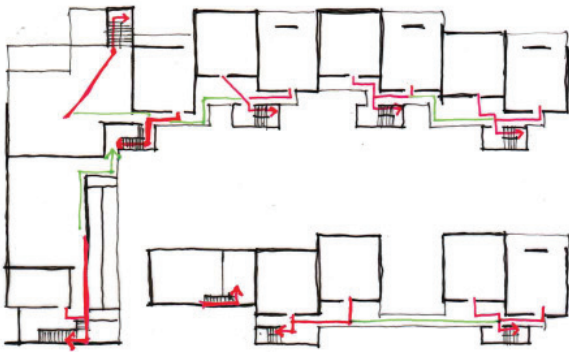
Ground floor plan



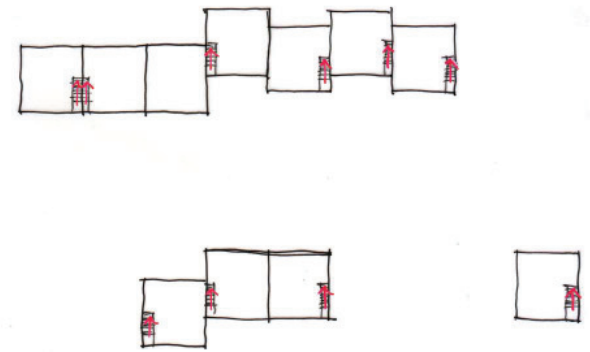
Second floor plan



Third floor plan

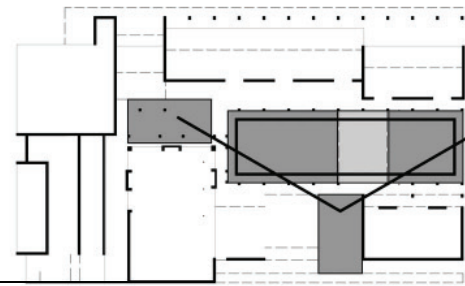


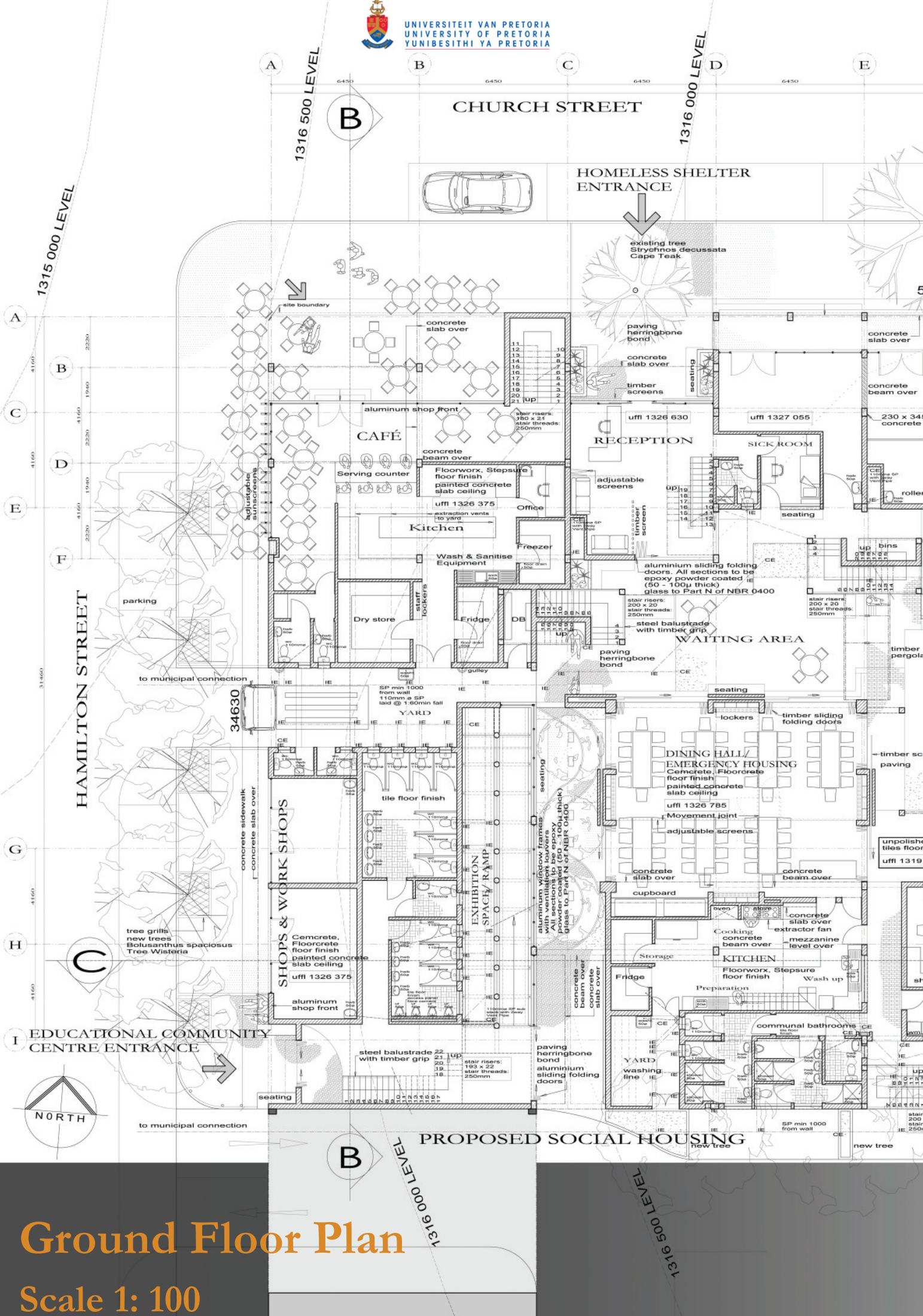
First floor plan



Fourth floor plan

**Escape Routes: TT 16**  
Two routes less than 45m in length





# Ground Floor Plan

Scale 1: 100



**NOTES**

1. All levels and dimensions to be checked on site prior to commencing the work.
2. All work to be in accordance with the National Building Regulations and Local Authority by-laws.
3. Any errors, discrepancies or omissions is to be reported to the architect immediately.
4. Figured dimensions to be taken in preference to scaled dimensions.
5. These architectural drawings are to be read in conjunction with engineers and consultant drawings where applicable.
6. Strength and stability of all walls to engineers specification. Eng. to design and specify foundations & roof construction.
7. Foundations to boundary walls not to encroach over boundary lines.
8. Brick force reinforcing to be installed in substructure brickwork every four courses.
10. All balcony balustrade walls to be anchored to eng. detail to concrete slabs.
11. Dpc 170mm min. above finished ground level.
12. Soil poisoning against all new foundation walls and under all new floor structures; written guarantee for 10 years provided.

**glazing note:**

all glass according to sabs 0400 part n, sabs 0137 glass thicknesses must be as follows for different areas:  
area: 0,75m<sup>2</sup> - 1,5m<sup>2</sup> : 4mm thick  
area: 1,5m<sup>2</sup> - 2,1m<sup>2</sup> : 5mm thick  
area: 2,1m<sup>2</sup> - 3,2m<sup>2</sup> : 6mm thick  
all glass lower than 500mm : safety glass with markers.  
all entrance doors sidelights to be safety glass with markers.

**drainage note:**

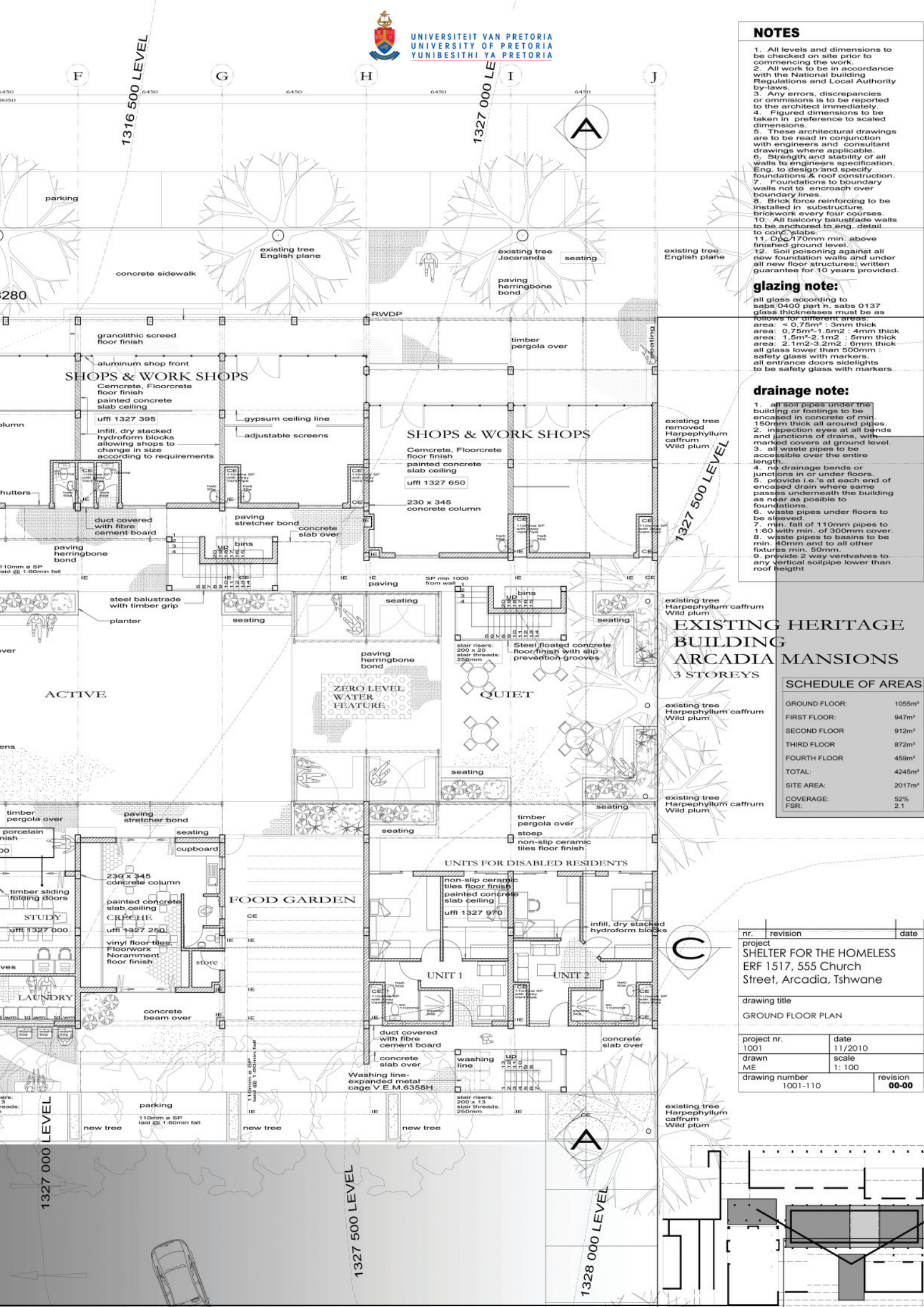
1. all soil pipes under the building or footings to be encased in concrete of min. 150mm thick all around pipes.
2. inspection eyes at all bends and junctions of drains, with marked covers at ground level.
3. all waste pipes to be accessible over the entire length.
4. no drainage bends or junctions in or under floors.
5. provide i.e.'s at each end of encased drain where same passes underneath the building as near as possible to foundations.
6. waste pipes under floors to be sleeved.
7. min. fall of 110mm pipes to 1:60 with min. of 300mm cover.
8. waste pipes to basins to be min. 40mm and to all other fixtures min. 50mm.
9. provide 2 way ventvalves to any vertical soilpipe lower than roof height.

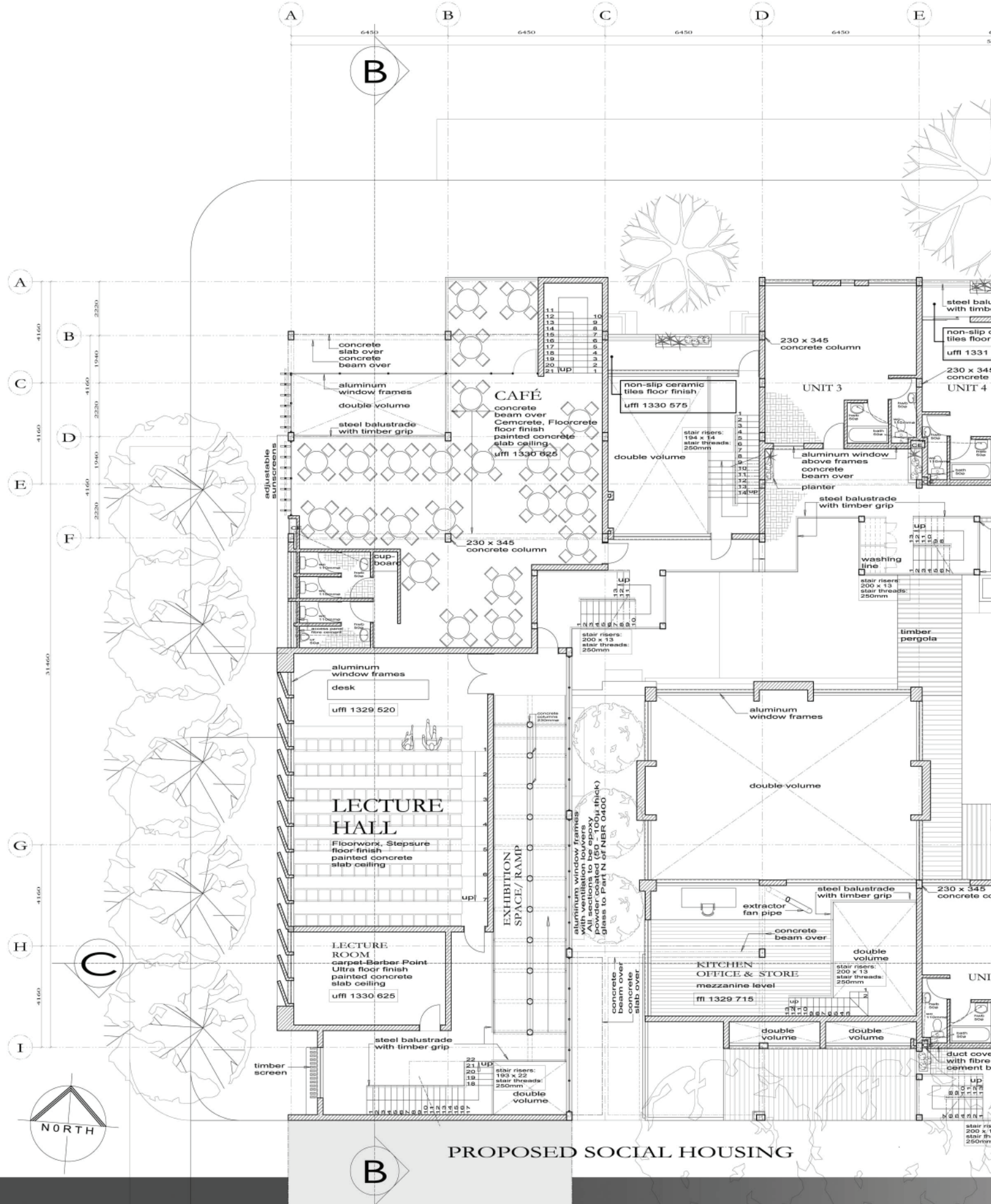
**EXISTING HERITAGE BUILDING  
ARCADIA MANSIONS  
3 STOREYS**

**SCHEDULE OF AREAS**

GROUND FLOOR:	1055m <sup>2</sup>
FIRST FLOOR:	947m <sup>2</sup>
SECOND FLOOR	912m <sup>2</sup>
THIRD FLOOR	872m <sup>2</sup>
FOURTH FLOOR	459m <sup>2</sup>
TOTAL:	4245m <sup>2</sup>
SITE AREA:	2017m <sup>2</sup>
COVERAGE:	52%
FSR:	2.1

nr.	revision	date
project SHELTER FOR THE HOMELESS ERF 1517, 555 Church Street, Arcadia, Tshwane		
drawing title GROUND FLOOR PLAN		
project nr. 1001	date 11/2010	
drawn ME	scale 1:100	
drawing number 1001-110	revision 00-00	





**First Floor Plan**  
Scale 1: 100



**NOTES**

1. All levels and dimensions to be checked on site prior to commencing the work.
2. All work to be in accordance with the National Building Regulations and Local Authority by-laws.
3. Any errors, discrepancies or omissions is to be reported to the architect immediately.
4. Figured dimensions to be taken in preference to scaled dimensions.
5. These architectural drawings are to be read in conjunction with engineers and consultant drawings where applicable.
6. Strength and stability of all walls to engineers specification. Eng. to design and specify foundations & roof construction.
7. Foundations to boundary walls not to encroach over boundary lines.
8. Brick force reinforcing to be installed in substructure brickwork every four courses.
10. All balcony balustrade walls to be anchored to eng. detail to conc. slabs.
11. Dpc 170mm min. above finished ground level.
12. Soil poisoning against all new foundation walls and under all new floor structures; written guarantee for 10 years provided.

**glazing note:**

all glass according to sabs 0400 part n, sabs 0137 glass thicknesses must be as follows for different areas:  
area: <math>0,75m^2</math> : 3mm thick  
area: <math>0,75m^2 - 1,5m^2</math> : 4mm thick  
area: <math>1,5m^2 - 2,1m^2</math> : 5mm thick  
area: <math>2,1m^2 - 3,2m^2</math> : 6mm thick  
all glass lower than 500mm : safety glass with markers.  
all entrance doors sidelights to be safety glass with markers

**drainage note:**

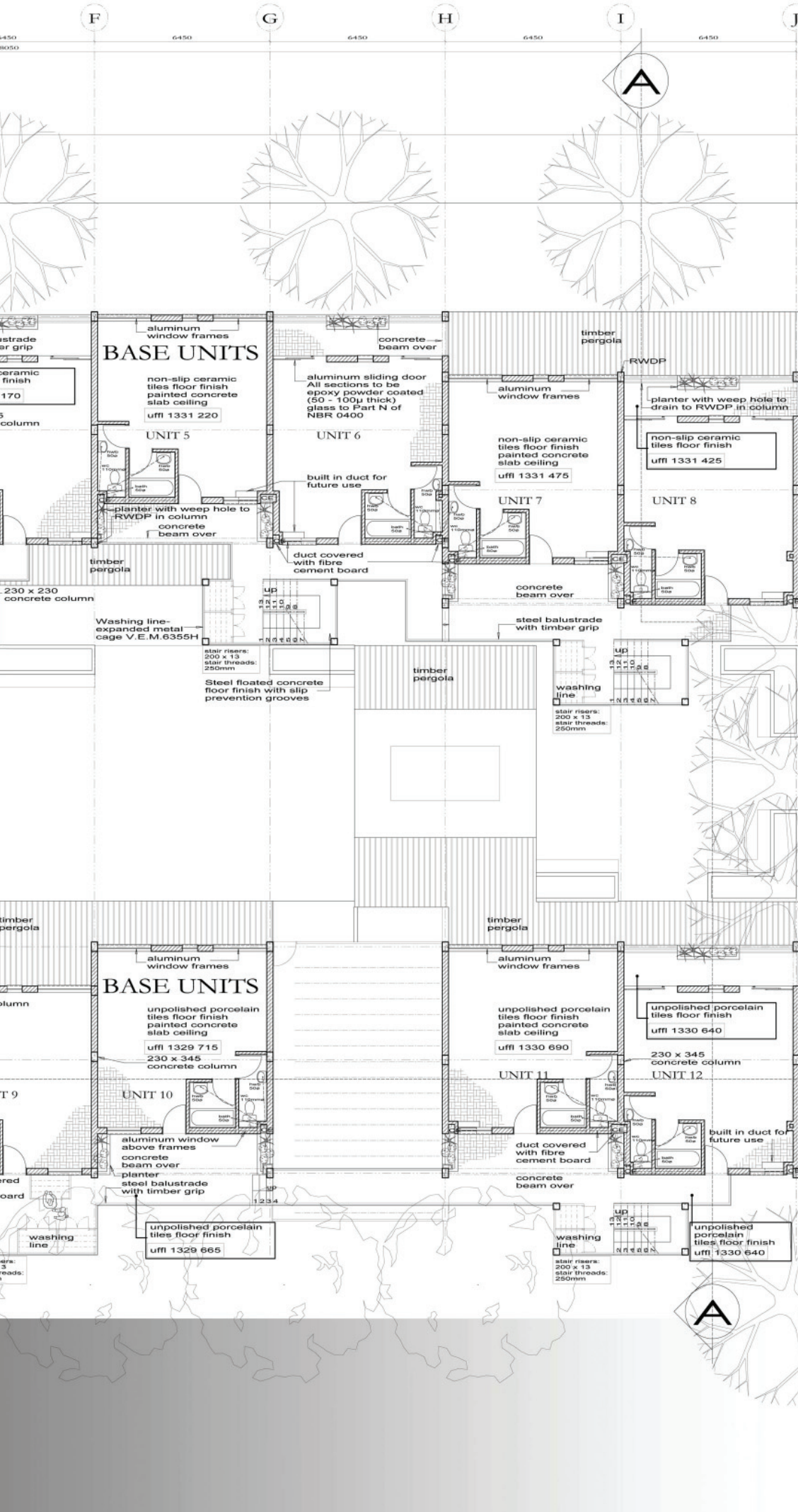
1. all soil pipes under the building or footings to be encased in concrete of min. 150mm thick all around pipes.
2. inspection eyes at all bends and junctions of drains, with marked covers at ground level.
3. all waste pipes to be accessible over the entire length.
4. no drainage bends or junctions in or under floors.
5. provide i.e.'s at each end of encased drain where same passes underneath the building as near as possible to foundations.
6. waste pipes under floors to be sleeved.
7. min. fall of 110mm pipes to 1:60 with min. of 300mm cover.
8. waste pipes to basins to be min. 40mm and to all other fixtures min. 50mm.
9. provide 2 way ventvalves to any vertical soilpipe lower than roof height

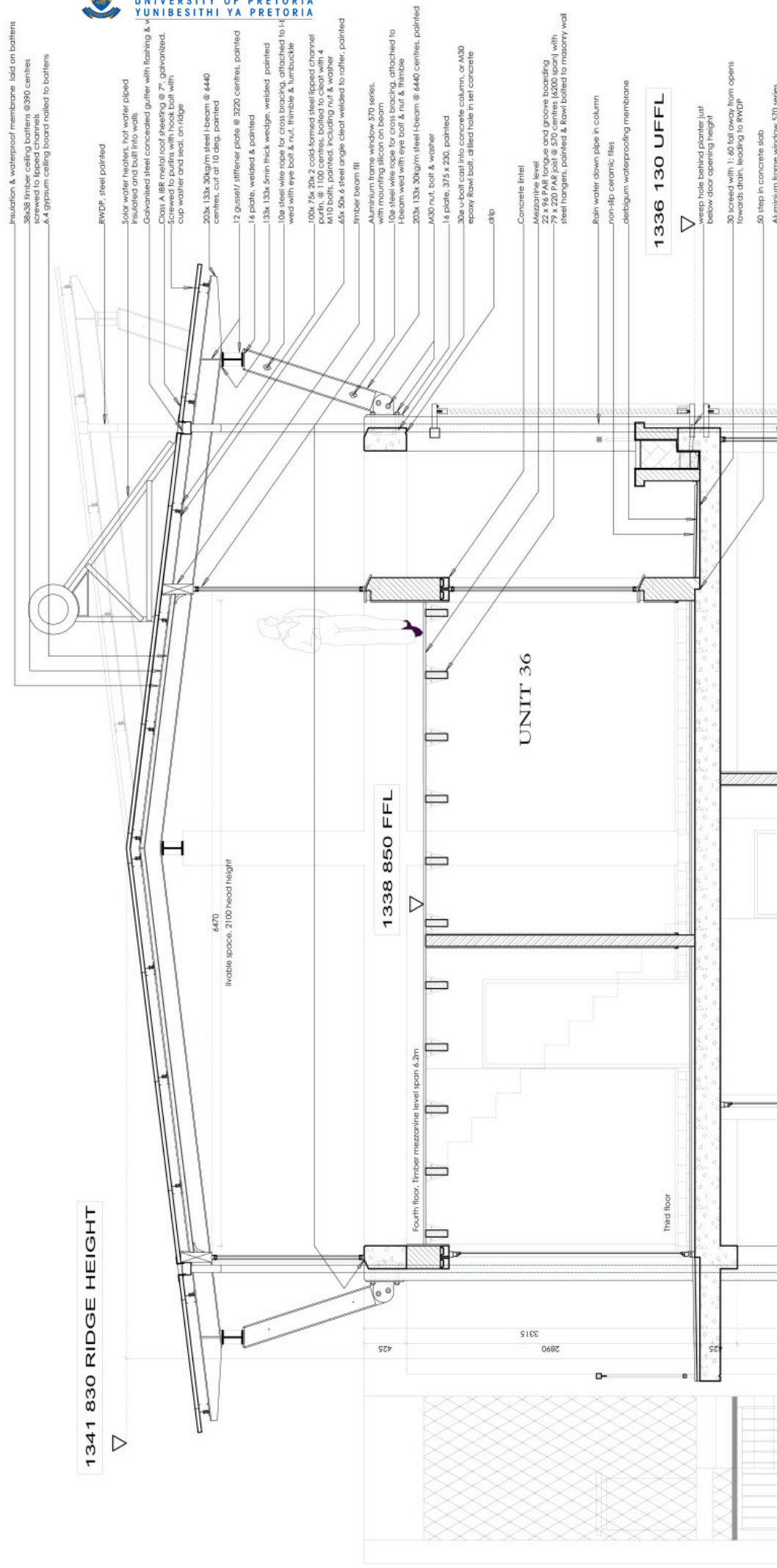
**EXISTING HERITAGE  
BUILDING  
ARCADIA MANSIONS  
3 STOREYS**

**SCHEDULE OF AREAS**

GROUND FLOOR:	1055m <sup>2</sup>
FIRST FLOOR:	947m <sup>2</sup>
SECOND FLOOR	912m <sup>2</sup>
THIRD FLOOR	872m <sup>2</sup>
FOURTH FLOOR	459m <sup>2</sup>
TOTAL:	4245m <sup>2</sup>
SITE AREA:	2017m <sup>2</sup>
COVERAGE:	52%
FSR:	2.1

nr.	revision	date
project SHELTER FOR THE HOMELESS ERF 1517, 555 Church Street, Arcadia, Tshwane		
drawing title FIRST FLOOR PLAN		
project nr. 1001	date 11/2010	
drawn ME	scale 1: 100	
drawing number 1001-120	revision 00-00	





Insulation & waterproof membrane laid on battens  
30x36 timber ceiling battens @390 centres  
screwed to lipped channels  
& gypsum ceiling board nailed to battens

RWDP, steel painted

Solar water heaters, hot water piped  
Insulated and built into walls  
Galvanized steel concealed gutter with flashing & cup washer and seal, on ridge

203x 133x 30kg/m steel I-beam @ 6440 centres, cut at 10 deg. painted

12 gusset/ stiffener plate @ 3220 centres, painted  
16 plate, welded & painted  
133x 133x 5mm thick wedge, welded, painted

10x steel wire rope for cross bracing, attached to I-beam with eye bolt & nut, thimble & turnbuckle  
100x 75x 20x 2 cold-formed steel lipped channel purlin @ 1100 centres, bolted to cleat with 4 M10 bolts, painted, including nut & washer  
65x 50x 6 steel angle cleat welded to rafter, painted

timber beam fill

Aluminum frame window 570 series, with mounting silicon on beam  
10x steel wire rope for cross bracing, attached to I-beam with eye bolt & nut & thimble  
203x 133x 30kg/m steel I-beam @ 6440 centres, painted

M30 nut, bolt & washer  
16 plate, 375 x 230, painted  
30x u-bolt cast into concrete column, or M30 epoxy rawl bolt, drilled hole in set concrete

slip

Concrete lintel  
Mezzanine level  
22 x 96 PAR tongue and groove boarding  
79 x 220 PAR post @ 570 centres (6200 span) with steel hangers, painted & rawl bolted to masonry wall

Rain water down pipe in column  
non-slip ceramic tiles  
derbigum waterproofing membrane

1336 130 UFFL

steps hole behind slates just below door opening height

30 screed with 1:40 fall away from opens towards drain, leading to RWDP  
.60 step in concrete slab  
Aluminum frame window 570 series

1341 830 RIDGE HEIGHT

6470  
livable space, 2100' head height

1338 850 FFL

UNIT 36

Fourth floor, timber mezzanine level span 6.2m

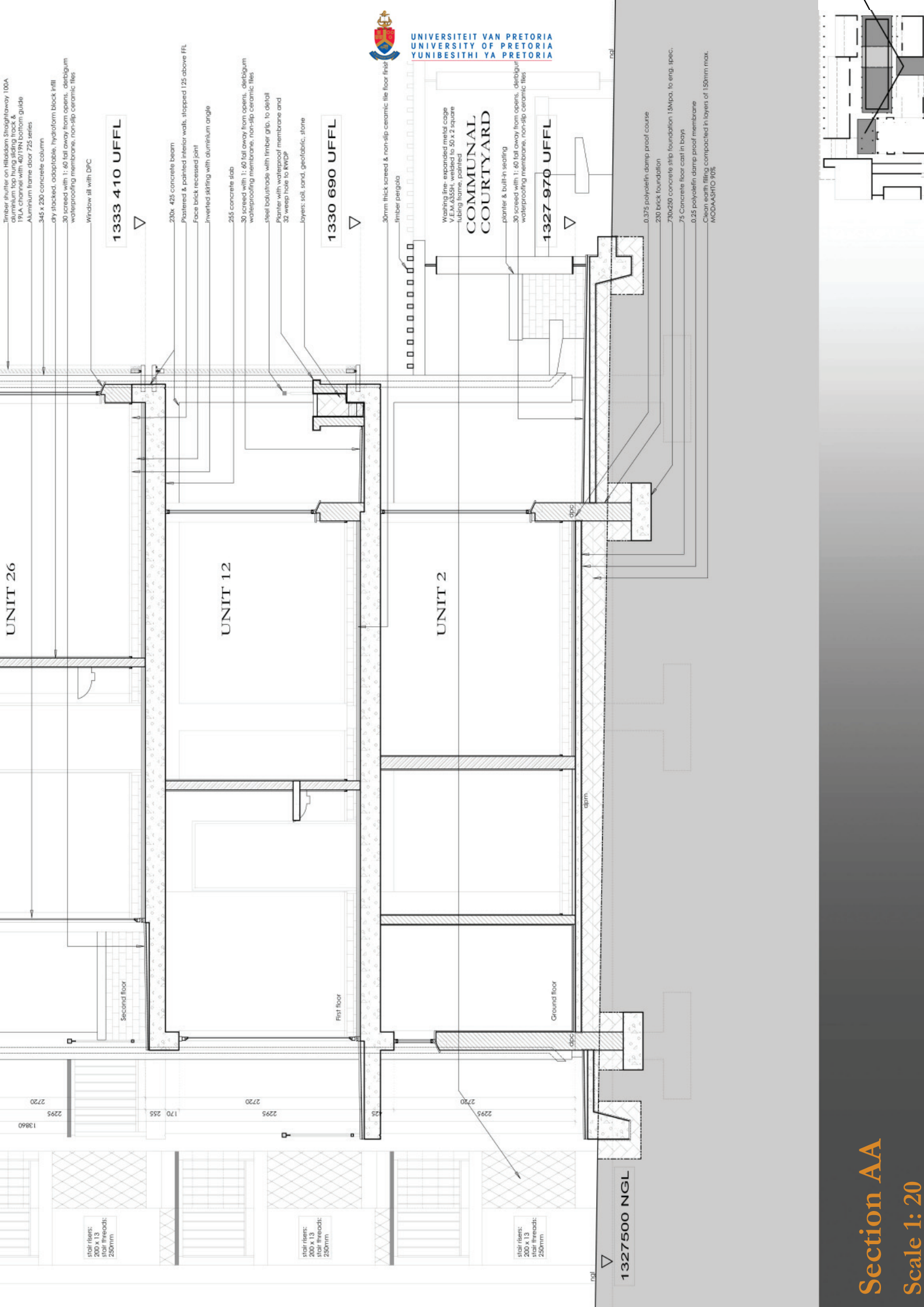
Third floor

425

2890

3315

425



UNIT 26

UNIT 12

UNIT 2

COMMUNAL COURTYARD

1333 410 UFFL

1330 690 UFFL

1327 970 UFFL

1327500 NGL

- Timber shutter on Hilti/odom Straightaway 100A
- aluminum top hung sliding track & aluminum top hung sliding track & 19LA channel with 40/19N bottom guide
- Aluminum frame door 725 series
- 345 x 230 concrete column
- dry stacked, adaptable, hydroform block infill
- 30 screed with 1:40 fall away from opens, diebigum waterproofing membrane, non-slip ceramic tiles
- Window sill with DPC

- 230x 425 concrete beam
- Painted & painted interior walls, stepped 125 above FFL
- Face brick recessed joint
- Inverted skirting with aluminum angle
- 255 concrete slab
- 30 screed with 1:40 fall away from opens, diebigum waterproofing membrane, non-slip ceramic tiles
- steel balustrade with timber grip, to detail
- Plaster with waterproof membrane and 25 weep hole to RTRP
- Layers: soil, sand, geotextile, stone

- 30mm thick screed & non-slip ceramic tile floor finish
- timber pergola
- Washing line - expanded metal edge V E.M. 155
- lubing frame, painted
- planter & built-in seating
- 30 screed with 1:40 fall away from opens, diebigum waterproofing membrane, non-slip ceramic tiles

- 0.275 polyolefin damp proof course
- 230 brick foundation
- 730x230 concrete strip foundation 15Mpa, to eng. spec.
- 75 Concrete floor cast in bays
- 0.25 polyolefin damp proof membrane MODAASITIO 905
- Clean earth filling compacted in layers of 150mm max.

stair risers: 200 x 13 stair treads: 250mm

stair risers: 200 x 13 stair treads: 250mm

stair risers: 200 x 13 stair treads: 250mm

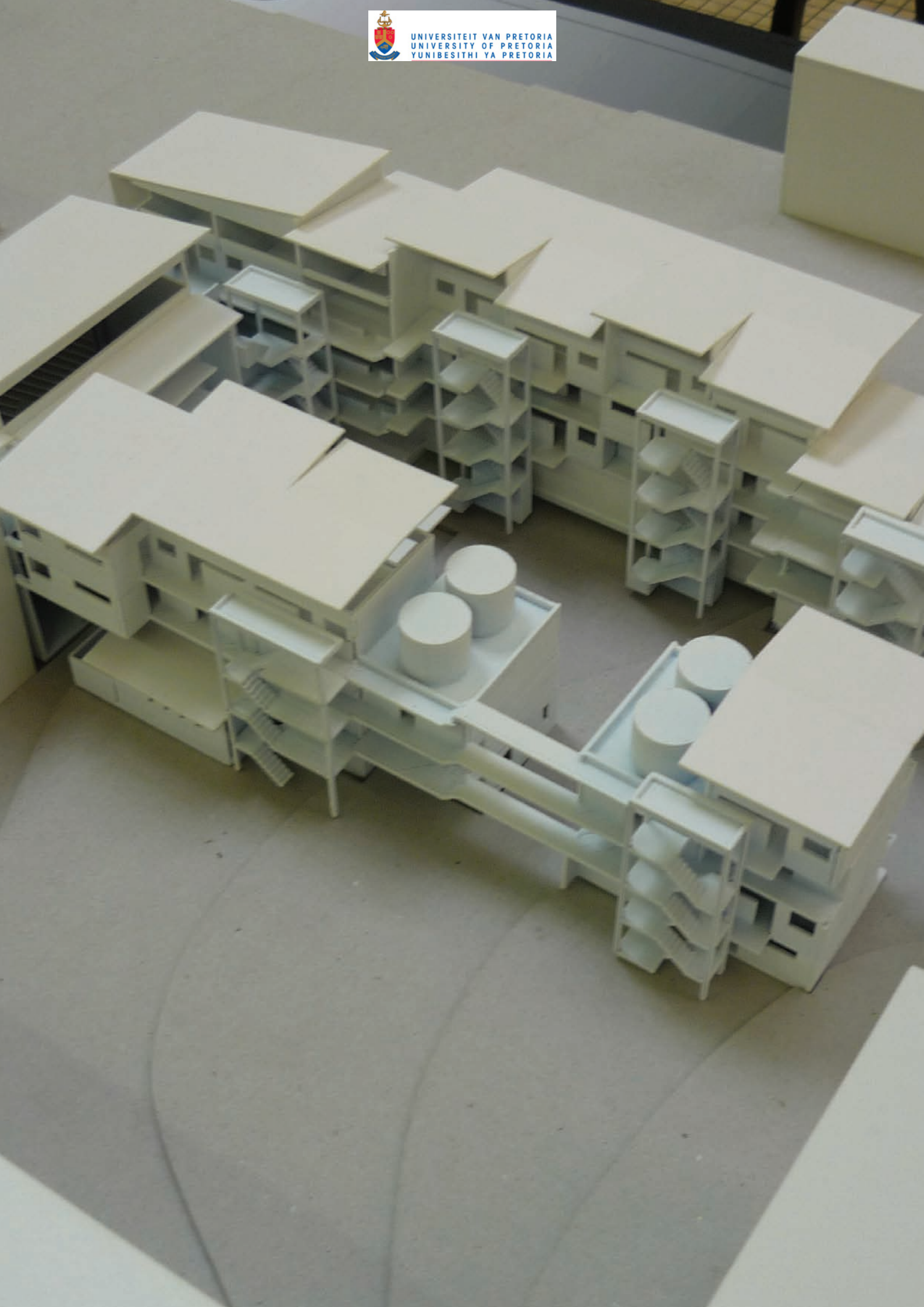
Section AA  
Scale 1: 20



UNIVERSITEIT VAN PRETORIA  
UNIVERSITY OF PRETORIA  
YUNIBESITHI YA PRETORIA









UNIVERSITEIT VAN PRETORIA  
UNIVERSITY OF PRETORIA  
YUNIBESITHI YA PRETORIA

