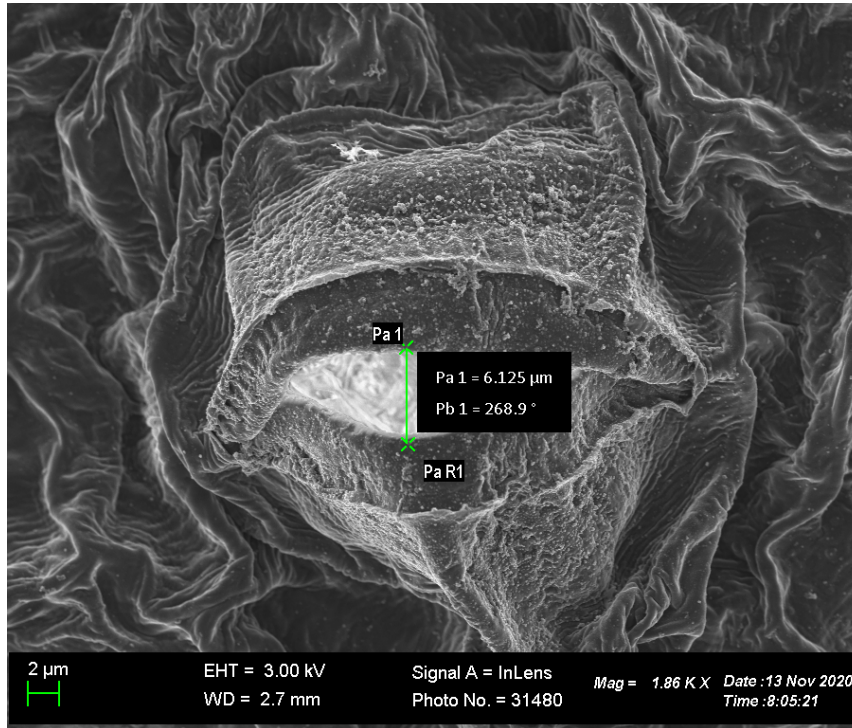


Stomatal width measurement



Stomatal length measurement

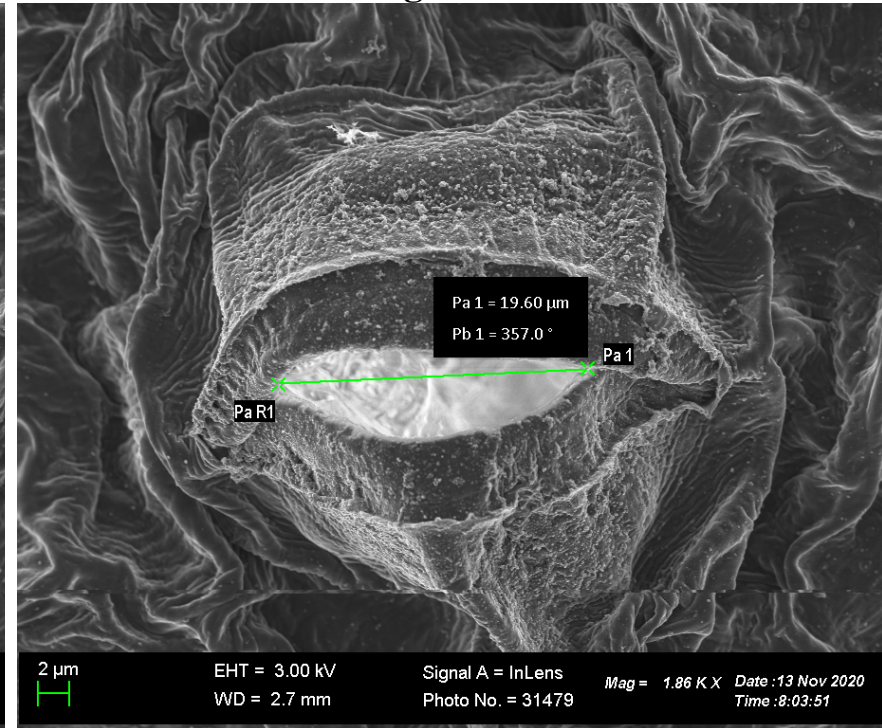
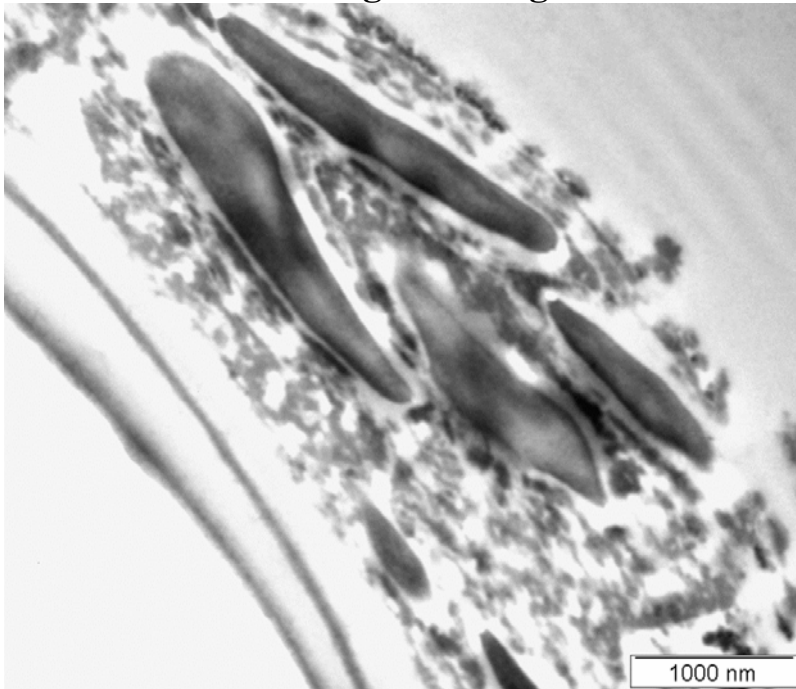


Figure S1. Stomatal width and length measurement on the images captured using the scanning electron microscope.

The Length measurement tool was used to measure the length and width of the stomatal aperture. After loading the images and selecting the 'measure tool', the first click was used to define the start point while a second click marked the end of the measurement area.

Starch grain image



Starch grain area measurement

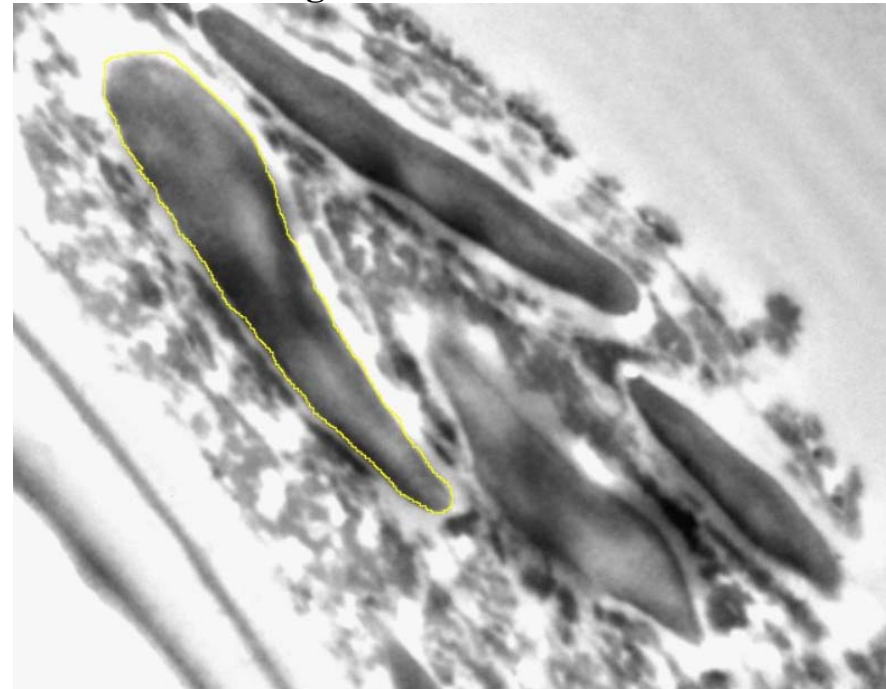


Figure S2. Starch grain area measurement on the images captured using the transmission electron microscope.

The images were calibrated to scale by setting the scale on the 'Analyze tab', where a known distance (length) was input as the 'known distance'. Thereafter, the free-hand tool was used to highlight the measurement area, followed by the use of the 'Measure' tool to determine the area of the starch grain.