

Supplementary Material

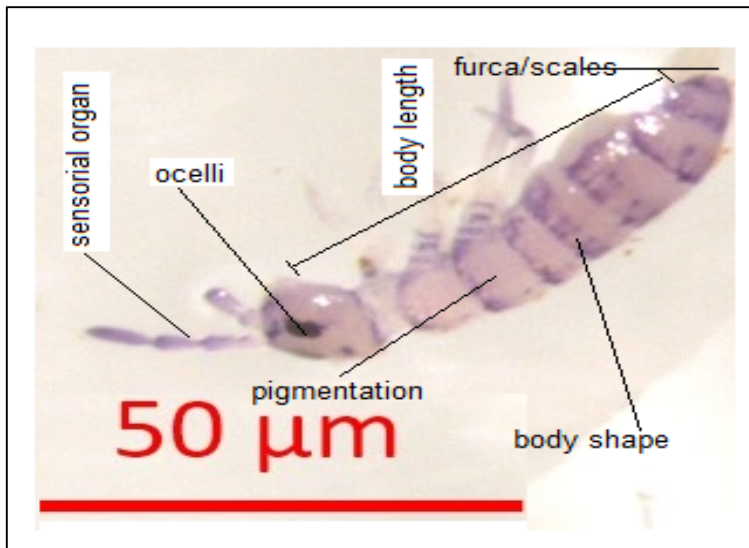


Figure S1: Morphological traits of Collembola used for identification.

Table S1: Population density of collembolan genus in push-pull (PP) and maize monoculture (MM) cropping systems (n=5).

Genus	Push pull cropping system						Maize monoculture cropping system					
	PP1	PP2	PP3	PP4	PP5	Total	MM1	MM2	MM3	MM4	MM5	Total
<i>Hypogastrura</i>	44	12	1	5	19	81	0	0	0	20	0	20
<i>Xenylla</i>	21	0	0	0	4	25	0	0	0	11	0	11
<i>Ceratophysella</i>	10	0	0	0	0	10	0	0	0	0	0	0
<i>Neanura</i>	22	0	0	0	0	22	0	0	0	0	0	0
<i>Desoria</i>	6	0	0	6	0	12	0	8	0	0	0	8
<i>Isotomurus</i>	7	6	7	0	12	32	1	0	1	0	3	5
<i>Folsomia</i>	0	5	0	0	7	66	0	0	0	10	0	33
<i>Cyphoderus</i>	0	0	0	0	2	2	0	1	0	0	0	1
<i>Dicyrtomina</i>	8	12	8	7	31	12	6	17	4	0	6	10
<i>Pygmarrhopalites</i>	1	0	0	0	0	1	0	0	0	0	0	0
<i>Sminthurides</i>	12	6	19	13	18	68	3	8	11	0	0	22
<i>Neelus</i>	10	1	12	5	12	40	2	4	4	1	3	14
Total						371						124

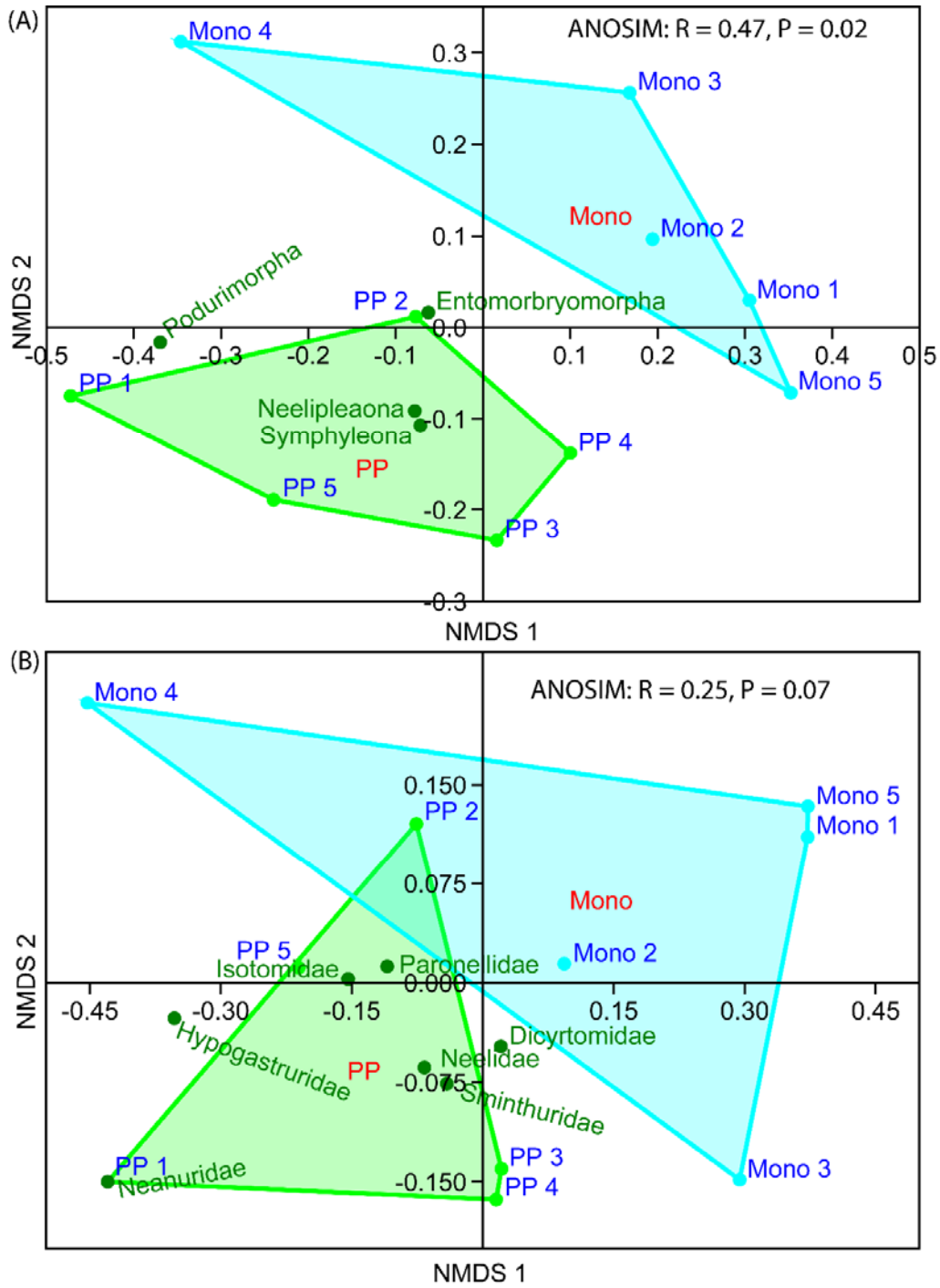


Figure S2: Ranking by non-metric multidimensional scaling (NMDS) of Collembola orders (A) orders, and families (B) from push-pull technology (PP) and maize monoculture (Mono) cropping system fields.