

*Ecosphere*

Special Feature: Insights from Subseasonal Imaging Spectroscopy

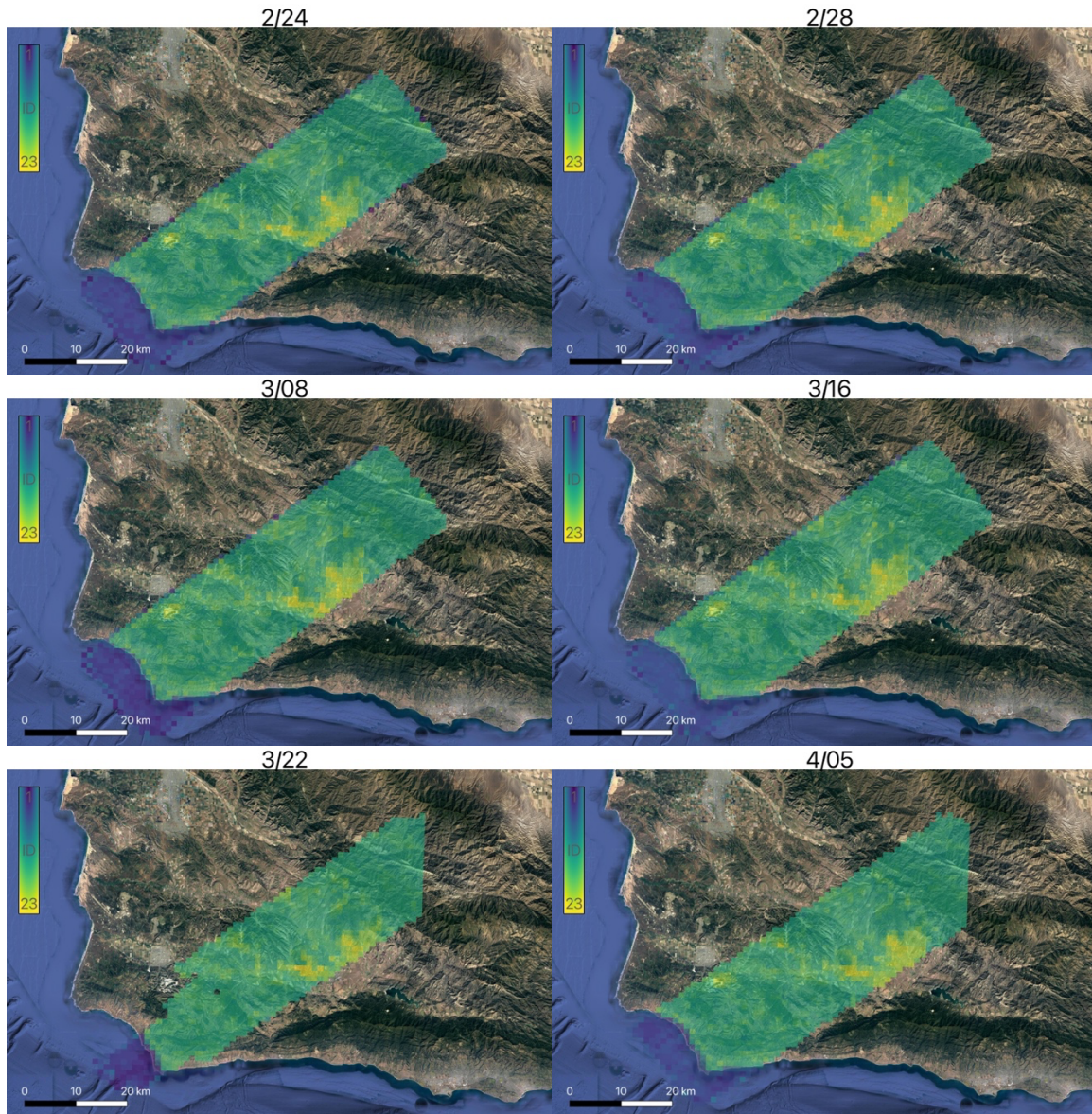
**Intrinsic dimensionality as a metric for temporal plant diversity evaluation: Case study from the SHIFT campaign**

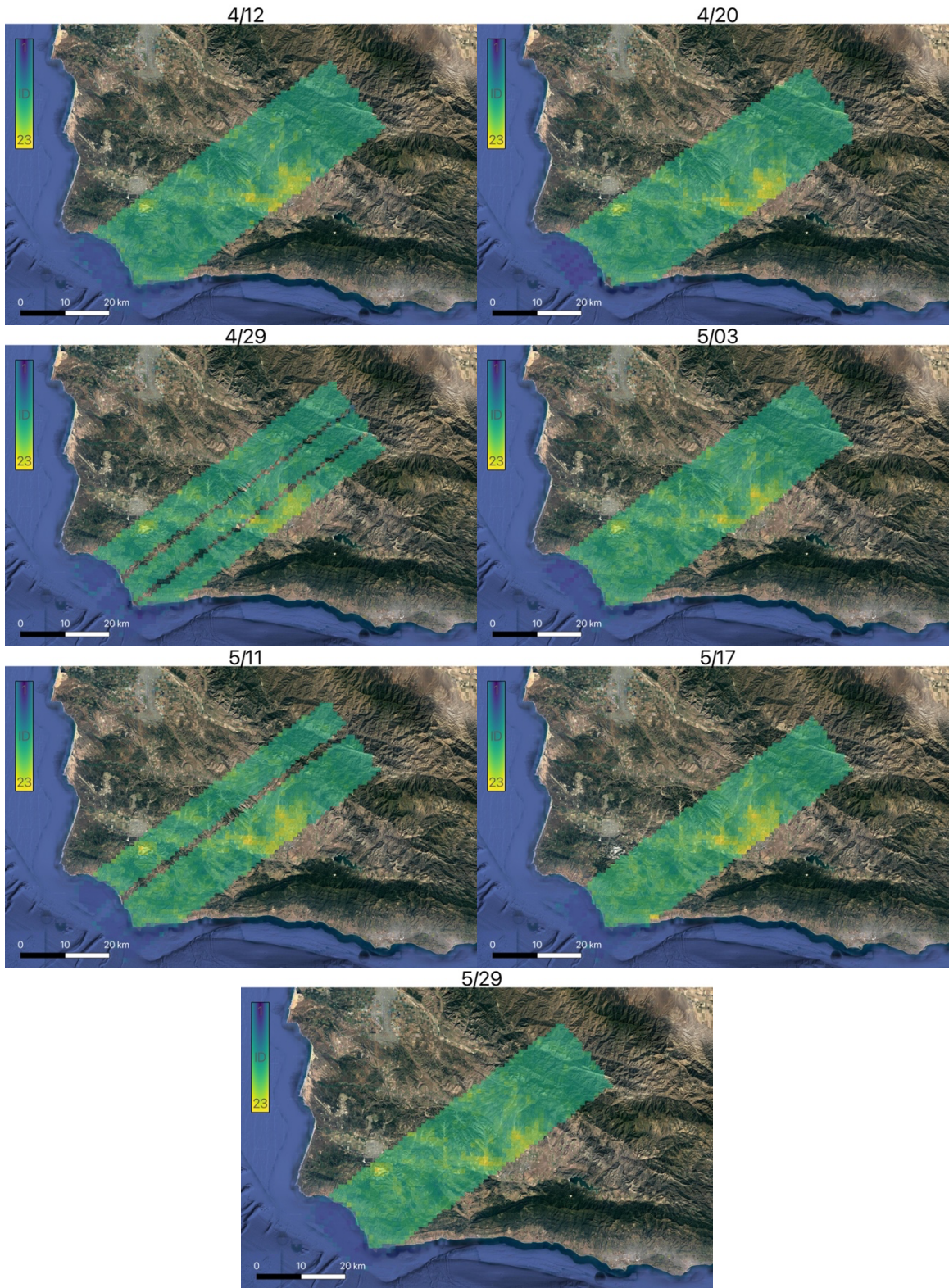
Kerry Cawse-Nicholson, K. Dana Chadwick, Philip G. Brodrick, Michael Kiper, David R. Thompson, David Schimel, Charles E. Miller, Philip A. Townsend, Luciana F. Alves, Alexey N. Shiklomanov, Moses A. Cho, Abel Ramoelo, Philemon Tsele, Nobuhle Majozi, Zoe A. Pierrat, Simon Ferrier

Corresponding author: Kerry Cawse-Nicholson ([Kerry-anne.cawse-nicholson@jpl.nasa.gov](mailto:Kerry-anne.cawse-nicholson@jpl.nasa.gov))

**Appendix S1**

Figure S1 shows the ID maps for all AVIRIS-NG acquisitions. All maps appear similar, and there are only minor changes over the three-month period. This shows a robustness to seasonal change.





*Figure S1: The Intrinsic Dimensionality (ID) of all SHIFT acquisitions. All images are very similar.*