

Supplementary Tables and Figures

TABLE S1 Primers used for mPCR serogrouping in this study (Doumith *et al* 2004)

Assay	Primer	Primer sequence (5' 3')	Product sizes (bp)
mPCR1	ORF2110	ORF2110-F: AGTGGACAATTGATTGGTGAA ORF2110-R: CATCCATCCCTTACTTTGGAC	597
mPCR1	ORF2819	ORF2819-F: AGCAAAATGCCAAAACTCGT ORF2819-R: CATCACTAAAGCCTCCCATTG	471
mPCR1	<i>Imo</i> 1118	<i>Imo</i> 1118-F: AGGGGTCTTAAATCCTGGAA <i>Imo</i> 1118-R: CGGCTTGTTCCGCATACTTA	906
mPCR1	<i>Imo</i> 0737	<i>Imo</i> 0737-F: AGGGCTTCAAGGACTTACCC <i>Imo</i> 0737-R: ACGATTTCTGCTTGCCATTC	691
mPCR1	<i>Prs</i>	<i>prs</i> - F: GCTGAAGAGATTGCGAAAGAAG <i>prs</i> -R: CAAAGAAACCTTGGATTTGCGG;	370

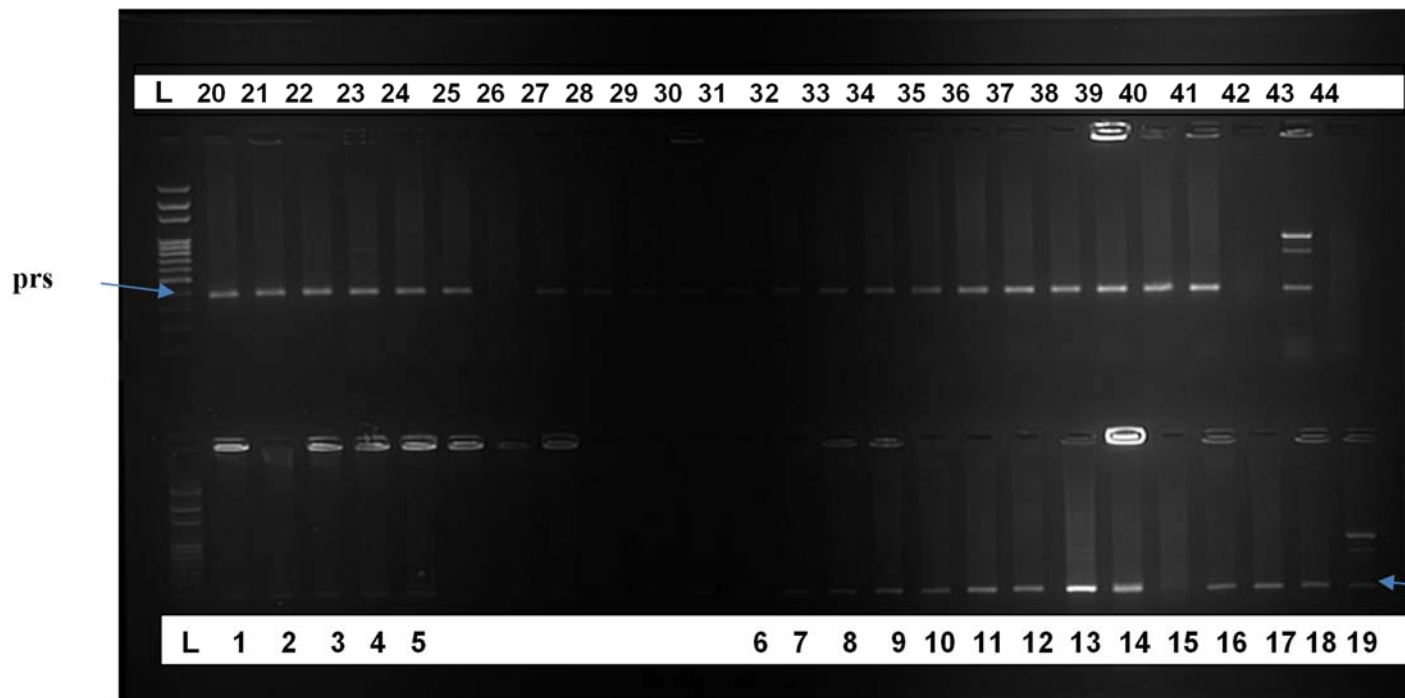


FIGURE S1 PCR gel images obtained on 3% agarose gels to detect the serogroups of *L. monocytogenes*

Lane L: 100bp DNA ladder; **Lanes 19,23,43:** *L. monocytogenes* serotypes

Lanes 1-5, 6-18, 20-22, 24-41: Untypable *Listeria* spp.

TABLE S2 Primers used for mPCR virulence profiling (Rawool *et al.*, 2017)

Assay	Primer	Primer sequence (5' 3')	Product sizes (bp)
mPCR1	<i>InlB</i>	inlB-F: GATATTGTGCCACTTTCAGGTT inlB-R: CCTCTTTCAGTGGTTGGGTT	376
mPCR1	<i>PlcA</i>	plcA-F: CTGCTTGAGCGTTCATGTCTCATCCC plcA-R: ATGGGTTTCACTCTCCTTCTAC	1484
mPCR1	<i>HlyA</i>	hly-F: GTTAATGAACCTACAAGACCTTCC hly-R: ACCGTTCTCCACCATTCCCA	457
mPCR1	<i>ActA</i>	actA-F: TCGCCGCGGAAATTAATAAAGA actA-R: ACGAAGGAACCGGGCTGCTAG	839
mPCR1	<i>Iap</i>	iap-F: ACAAGCTGCACCTGTTGCAG iap-R: TGACAGCGTGTGTAGTAGCA	131
mPCR2	<i>InlA</i>	InlA-F: ACGAGTAACGGGACAAATGC InlA-R: CCCGACAGTGGTGCTAGATT	800
mPCR2	<i>InlC</i>	inlC-F: AATTCCCACAGGACACAACC inlC-R: CGGGAATGCAATTTTTCATA	517
mPCR2	<i>InlJ</i>	inlJ-F: TGTAACCCCGCTTACACACAGTT inlJ-R: AGCGGCTTGGCAGTCTAATA	238

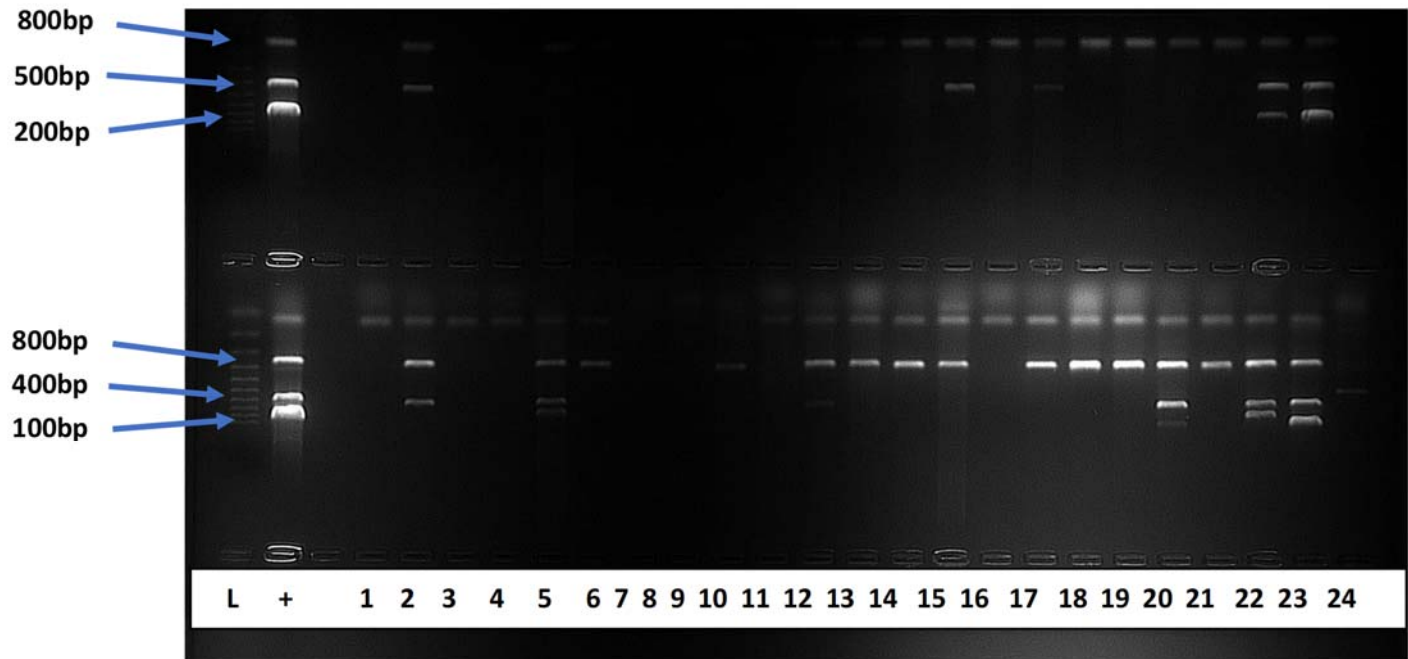


FIGURE S2 PCR gel images obtained on 3% agarose gels to detect virulence genes in *L. monocytogenes* isolates
Lane L: 100bp DNA ladder; **Lane +:** positive control (ATCC 19111); **Lanes 1-24:** *L. monocytogenes*