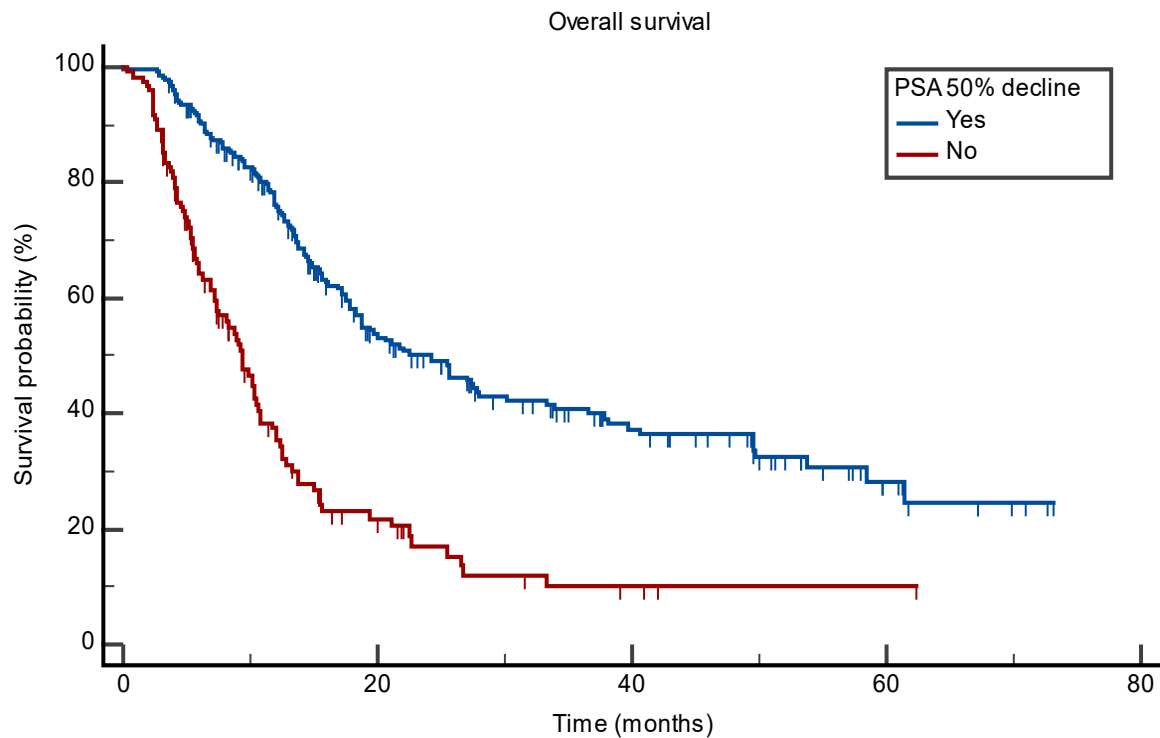


## Supplementary appendix 2

Participating centers in the WARMTH Act study

<b>Center</b>	<b>Name of Principal Investigator</b>	<b>Number of Patients contributed</b>
Department of Nuclear Medicine, University of Pretoria, Pretoria, South Africa	Prof Mike M. Sathekge	248
GenesisCare, Murdoch, WA, Australia	Prof Nat P. Lenzo	57
Department of Nuclear Medicine, All India Institute of Medical Sciences, New Delhi, India	Prof Chandrasekhar Bal	56
Department of Nuclear Medicine, Technical University Munich, Munich, Germany	Prof Mathais Eiber	50
Fortis Memorial Research Institute, Gurgaon, India	Dr. Ishita Sen	40
Department of Nuclear Medicine, University Hospital Heidelberg, Heidelberg, Germany	Dr. Clemens Kratochwil	22
Department of Nuclear Medicine, Postgraduate Institute of Medical Education and Research, Chandigarh, India	Prof Ashwani Sood	15

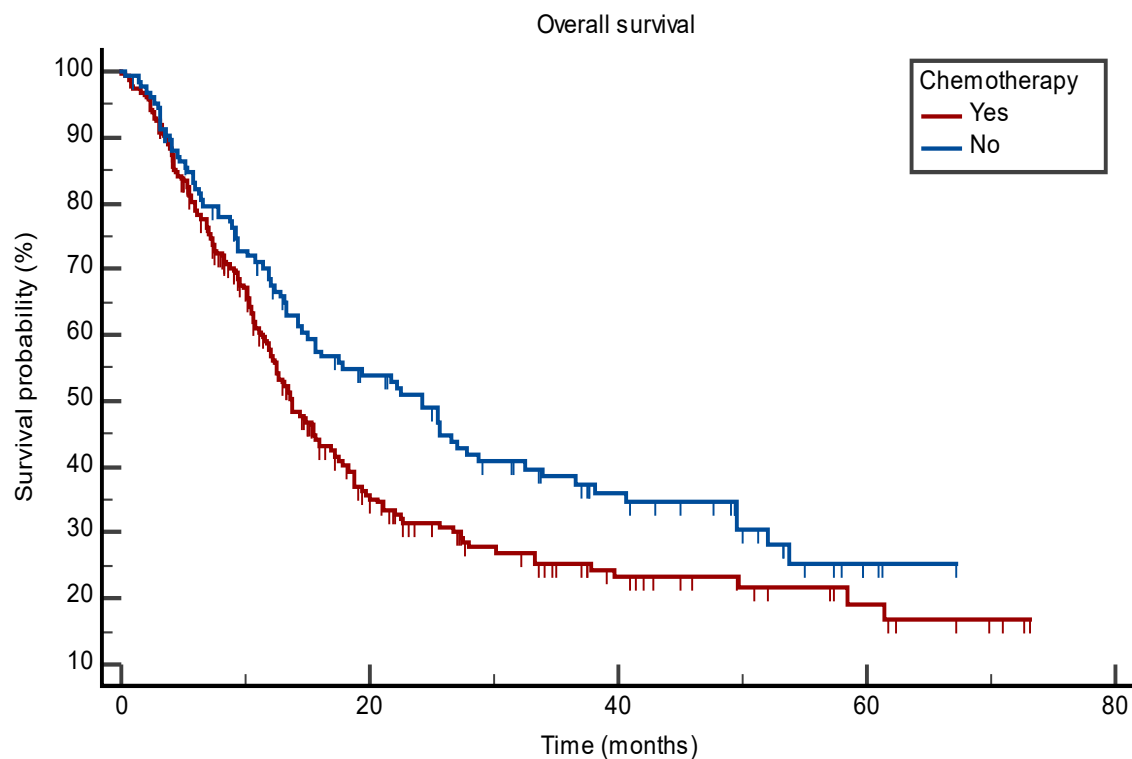


Number at risk

Time (months)	0	20	40	60	80
Group: Yes	228	91	40	10	0
Group: No	122	16	4	1	0

PSA decline of $\geq 50\%$	Median	95% CI for the median	Log-rank test	p-value
Yes	24.214	18.300 to 30.094	59.772	<0.001
No	9.331	7.294 to 10.612		

**Supplementary figure:** Kaplan Meier curve comparing overall survival in patients who achieved a PSA decline of  $\geq 50\%$  and those who did not.

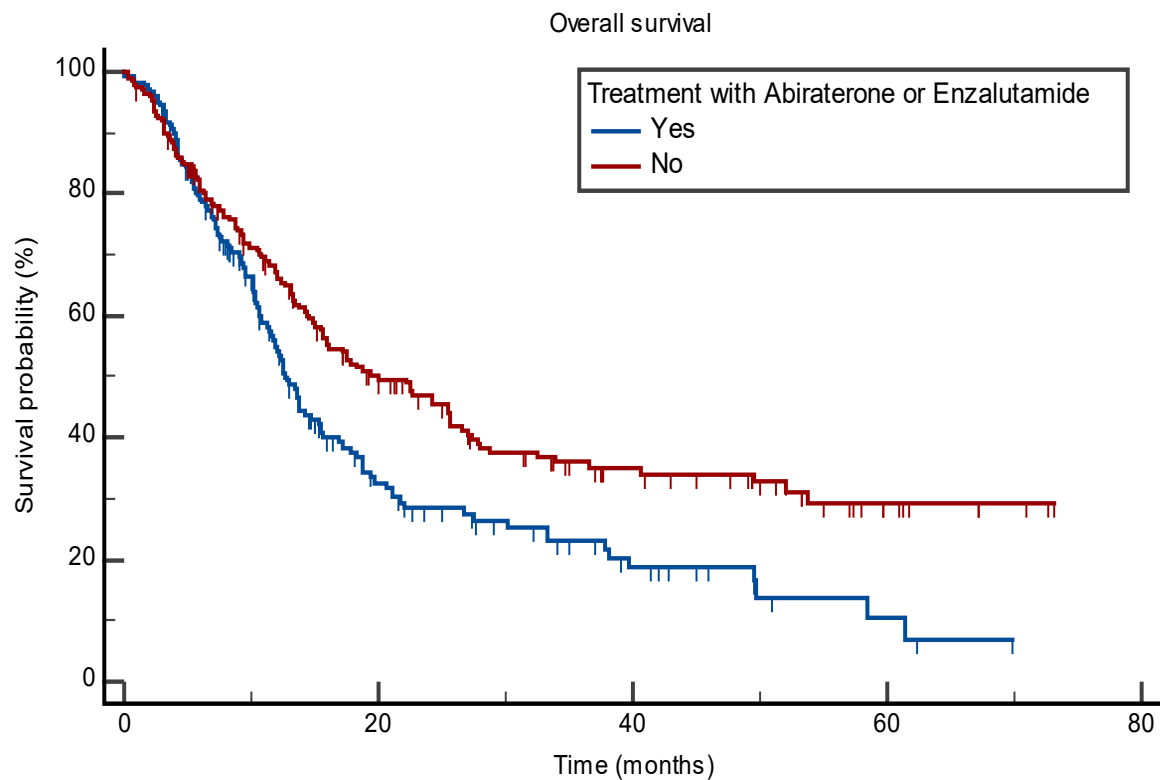


Number at risk

Group: Yes	255	59	21	8	0
Group: No	126	56	27	4	0

Chemotherapy	Median	95% CI for the median	Log-rank test	<i>p</i> -value
Yes	13.700	12.057 to 16.000	5.7916	<b>0.016</b>
No	24.214	14.982 to 28.715		

**Supplementary figure:** Kaplan Meier curve showing the overall survival in patients with prior taxane chemotherapy versus those without.



Number at risk

Group: Yes

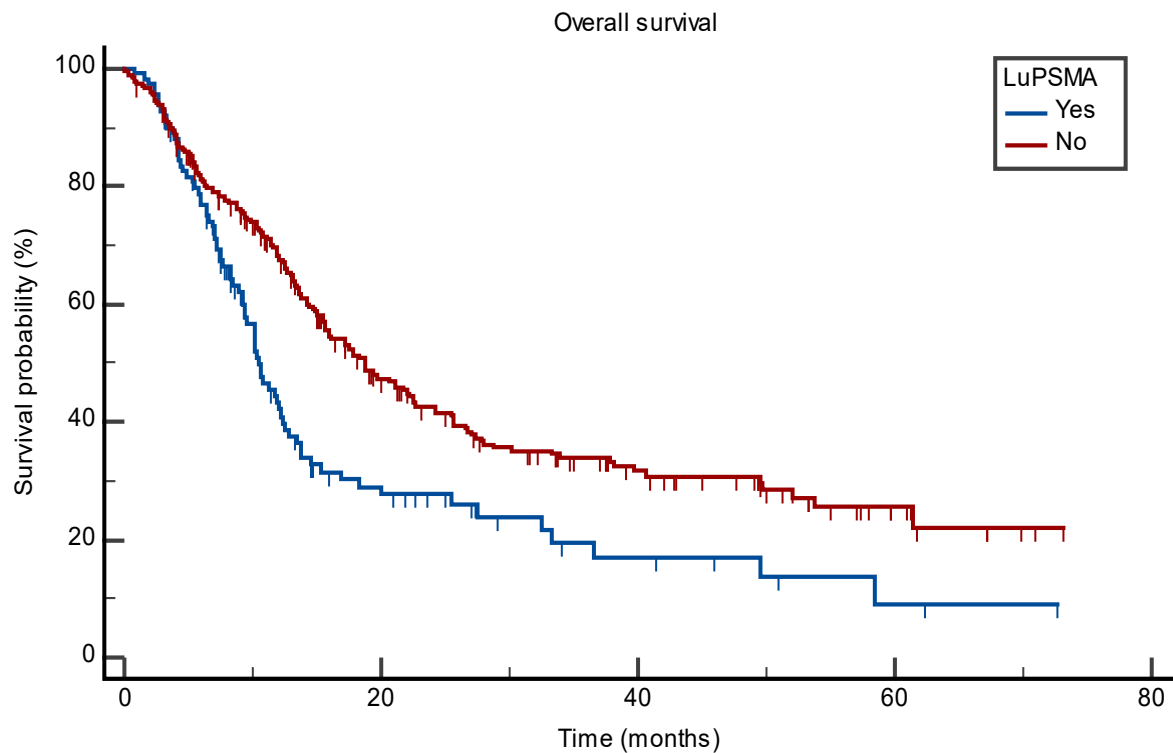
182                      39                      13                      3                      0

Group: No

199                      76                      35                      9                      0

Treatment with Abiraterone or Enzalutamide	Median	95% CI for the median	Log-rank test	<i>p</i> -value
Yes	12.682	11.466 to 15.244	10.110	0.002
No	19.943	15.573 to 25.659		

**Supplementary figure:** Kaplan Meier curve comparing overall survival in patients with prior treatment with Abiraterone or Enzalutamide versus those without.



Number at risk

Group: Yes

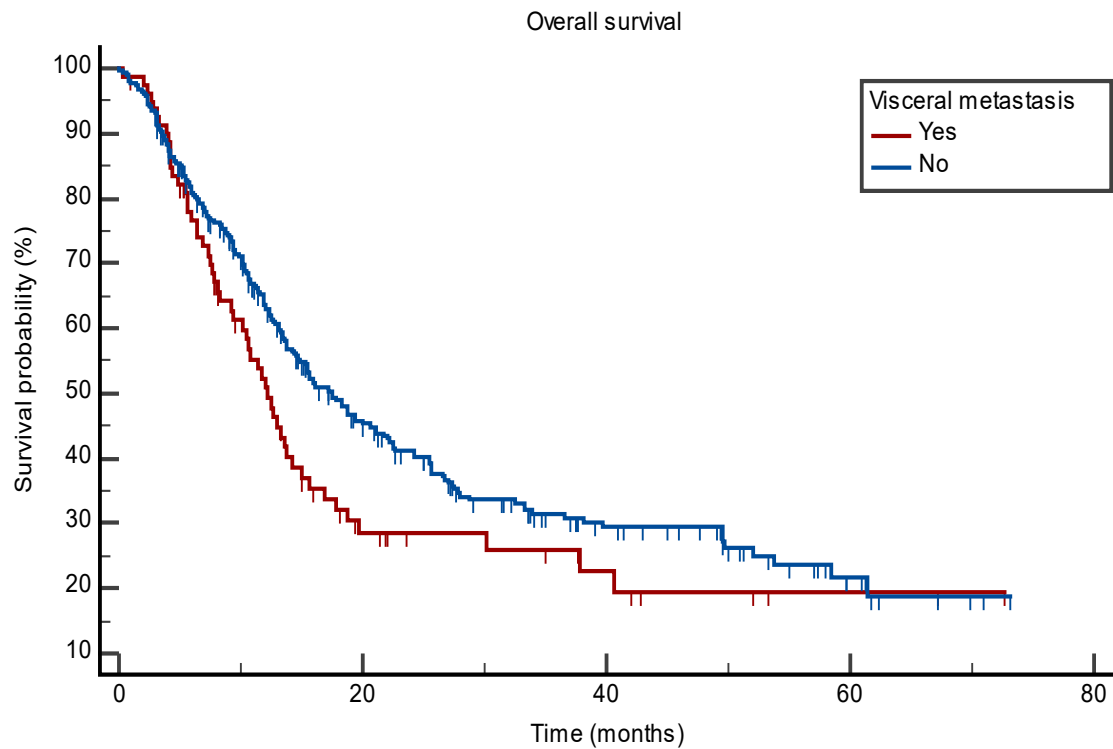
111                      21                      7                      2                      0

Group: No

270                      94                      41                      10                      0

<sup>177</sup> Lu-PSMA	Median	95% CI for the median	Log-rank test	<i>p</i> -value
Yes	10.546	9.199 to 12.419	13.471	0.002
No	18.793	15.573 to 22.538		

**Supplementary figure:** Kaplan Meier curve comparing overall survival in patients with <sup>177</sup>Lu-PSMA versus those without



Number at risk

Group: Yes

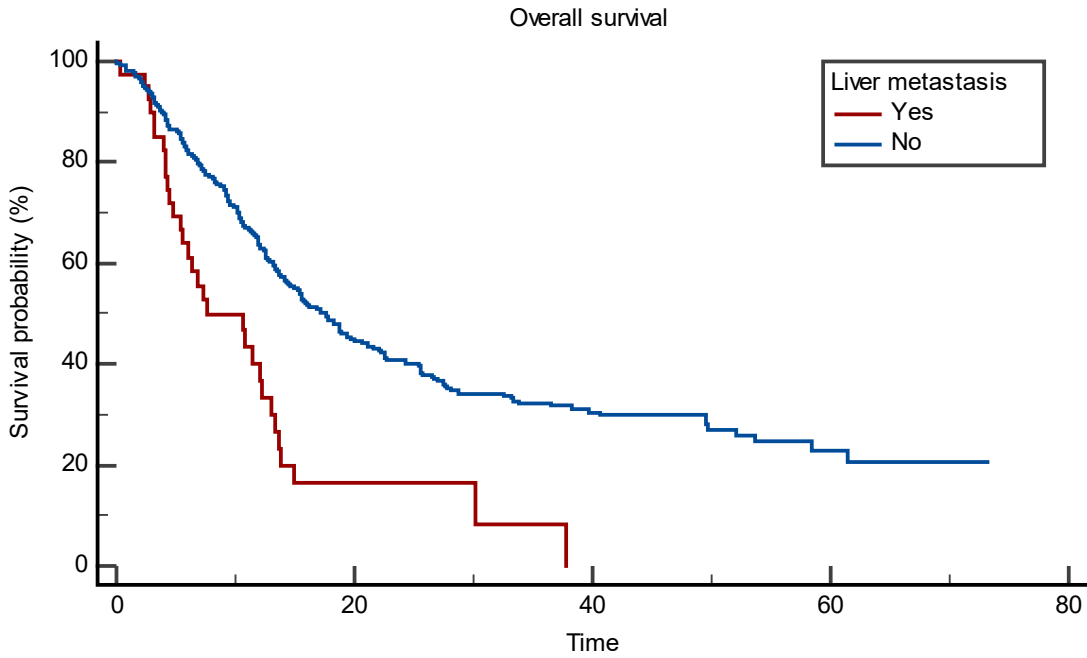
80                      15                      7                      2                      0

Group: No

301                      100                      41                      10                      0

Visceral metastasis	Median	95% CI for the median	Log-rank test	p-value
Yes	12.255	9.331 to 14.160	3.723	0.054
No	17.577	14.324 to 21.125		

**Supplementary figure:** Kaplan Meier curve comparing the overall survival in patients with visceral metastasis of castration-resistant prostate cancer versus those without.



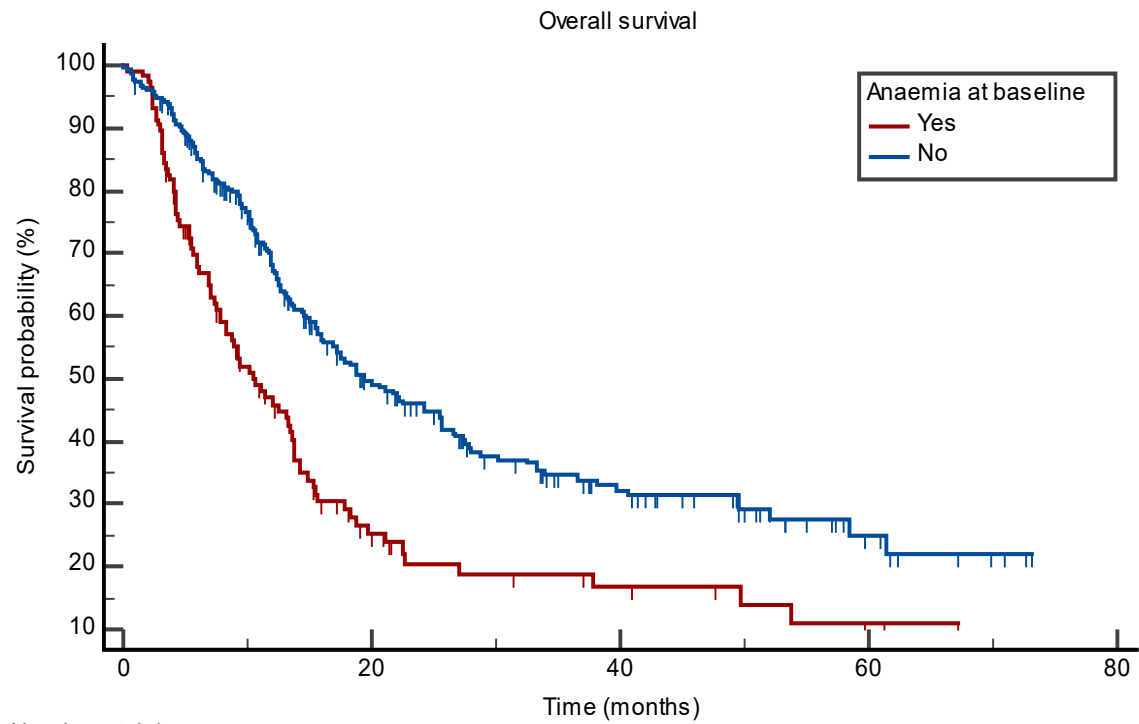
Number at risk

Group: Yes					
40	4	0	0	0	
Group: No					
341	111	48	12	0	

Liver metastasis	Median	95% CI for the median	Log-rank test	p-value
Yes	7.688	5.421 to 12.255	20.134	<0.001
No	17.577	14.522 to 20.632		

**Supplementary figure:** Kaplan Meier curve comparing the overall survival in patients with liver metastasis of castration-resistant prostate cancer versus those without.



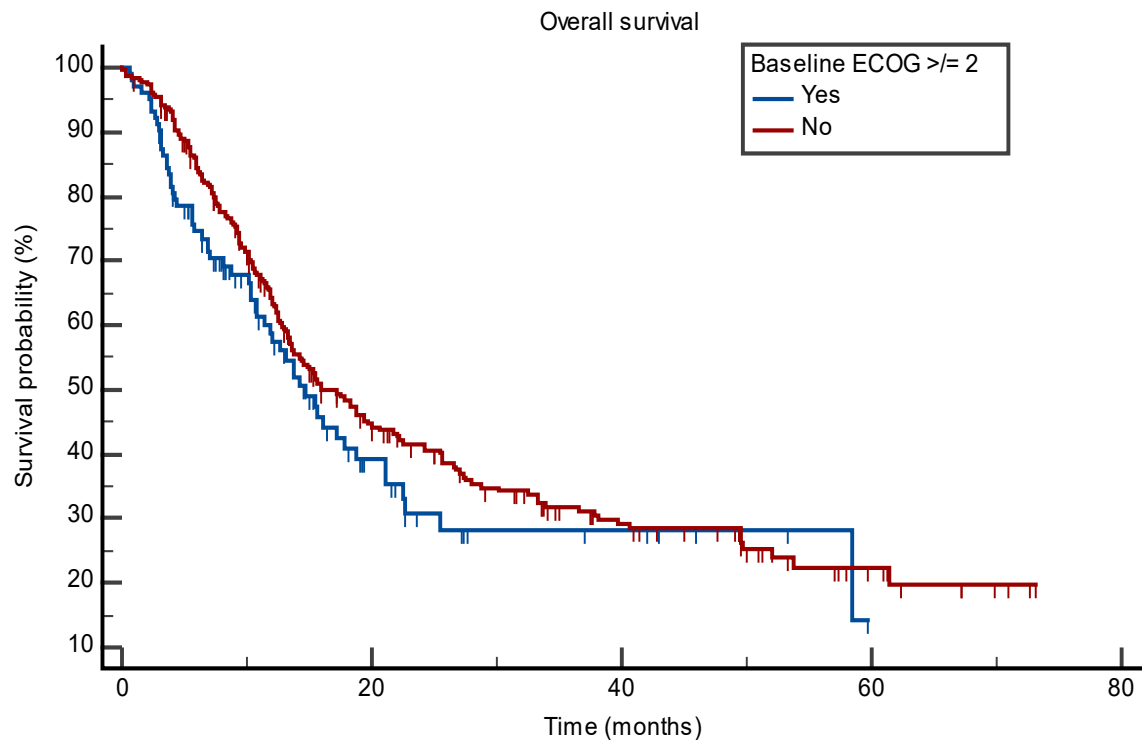


Number at risk

Group: Yes	115	18	8	3	0
Group: No	255	94	40	9	0

Anaemia at baseline	Median	95% CI for the median	Log-rank test	p-value
Yes	10.612	7.819 to 13.634	21.737	<0.001
No	19.351	15.934 to 25.561		

**Supplementary figure:** Kaplan Meier curve comparing overall survival in patients with anemia at baseline versus those without.

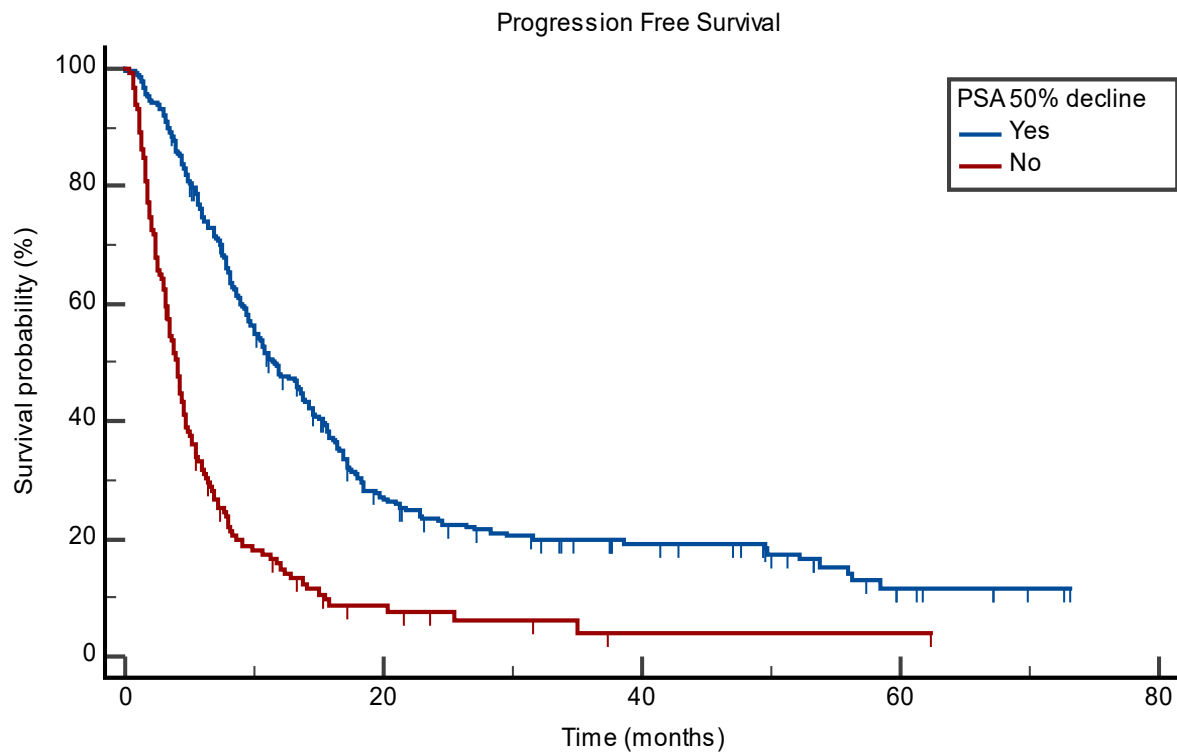


Number at risk

Group	0	20	40	60	80
Group: Yes	104	20	6	0	0
Group: No	260	91	40	11	0

Baseline ECOG $\geq 2$	Median	95% CI for the median	Log-rank test	<i>p</i> -value
Yes	14.653	11.466 to 21.125	1.716	0.190
No	16.000	13.667 to 20.632		

**Supplementary figure:** Kaplan Meier curve comparing overall survival in patients who had ECOG performance status  $\geq 2$  at baseline versus performance status 1/0.



Number at risk

Group: Yes

248

59

28

7

0

Group: No

146

8

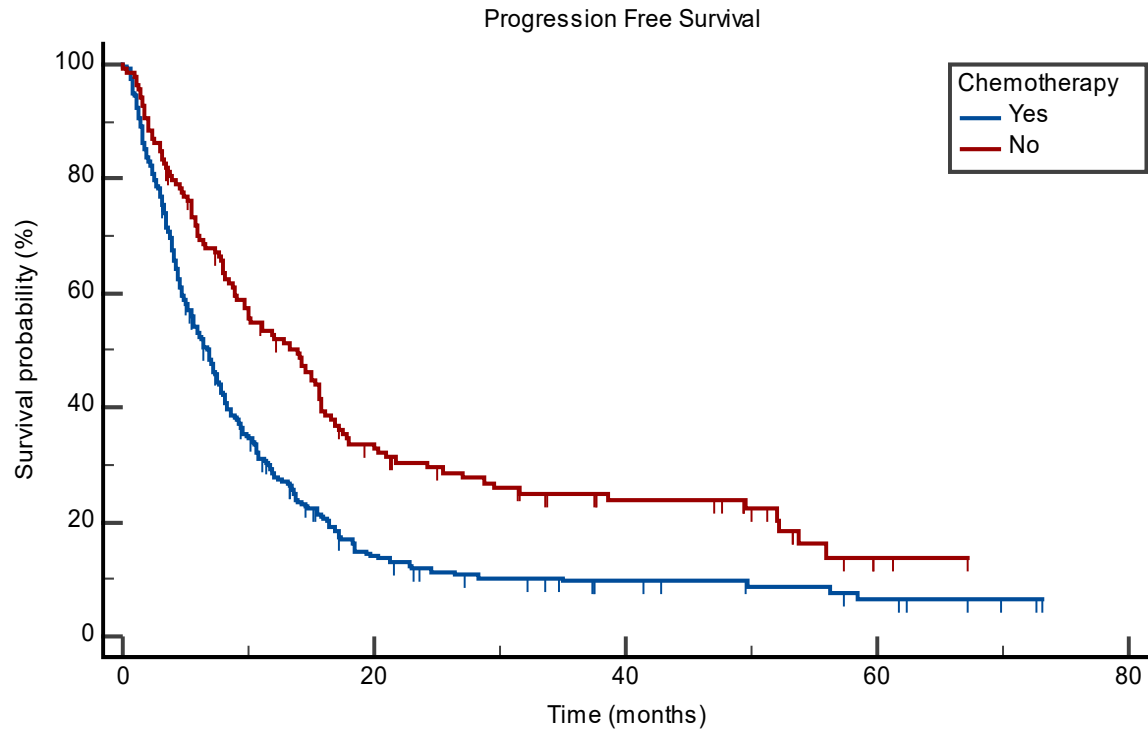
1

1

0

PSA 50% decline	Median	95% CI for the median	Log-rank test	<i>p</i> -value
Yes	11.598	9.626 to 13.799	79.120	<0.001
No	4.008	3.318 to 4.534		

**Supplementary figure:** Kaplan Meier curve comparing progression-free survival in patients with  $\geq 50\%$  PSA decline versus those without.



Number at risk

Group: Yes

287

32

13

6

0

Group: No

138

41

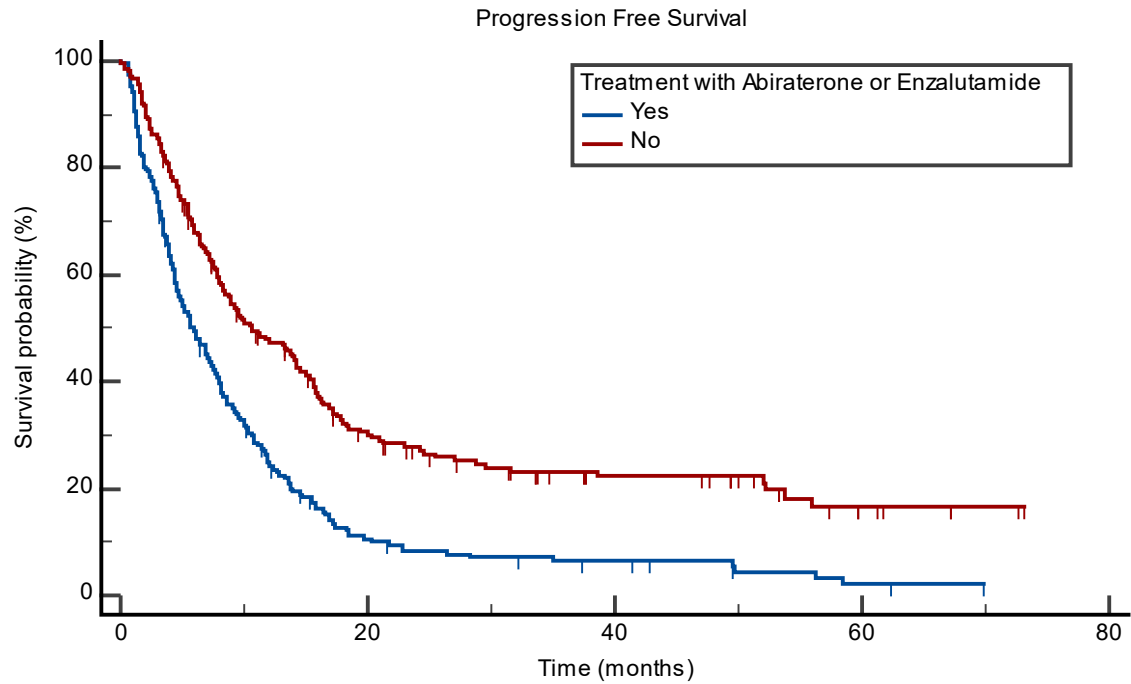
20

3

0

Chemotherapy	Median	95% CI for the median	Log-rank test	<i>p</i> -value
Yes	6.834	5.487 to 7.589	21.366	<0.001
No	13.930	9.626 to 15.671		

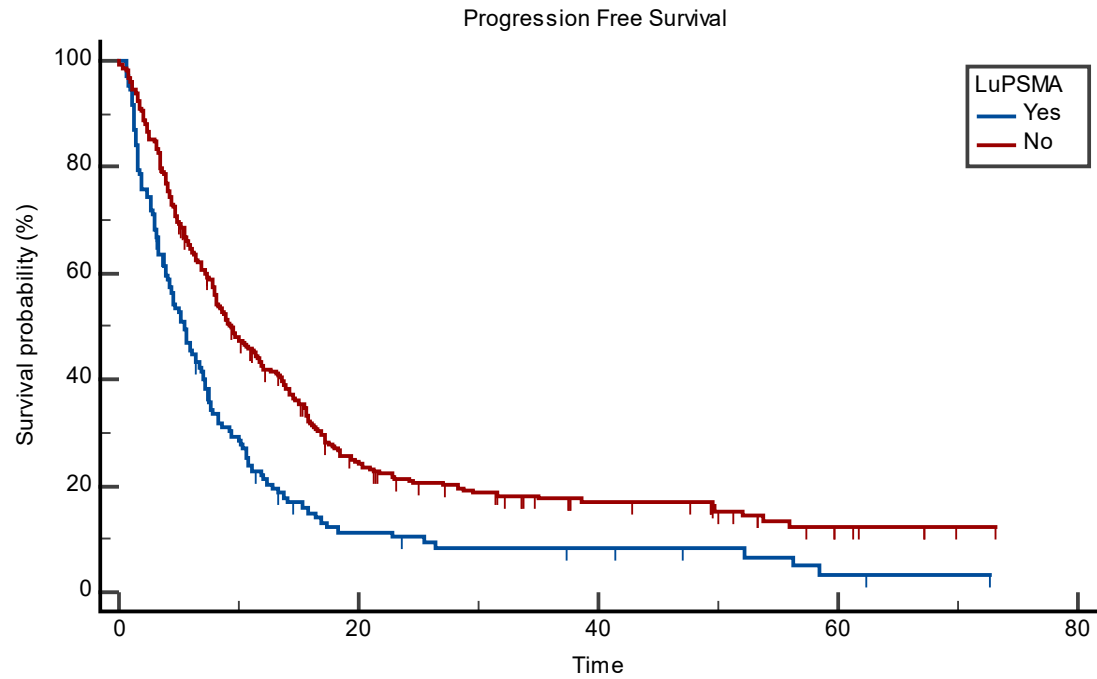
**Supplementary figure:** Kaplan Meier curve comparing progression-free survival in patients with prior taxane-based chemotherapy use versus those without.



Number at risk					
Group: Yes	213	19	9	2	0
Group: No	212	54	24	7	0

Prior abiraterone/enzalutamide	Median	95% CI for the median	Log-rank test	<i>p</i> -value
Yes	5.914	4.632 to 7.392	35.040	<0.001
No	10.612	8.312 to 14.259		

**Supplementary figure:** Kaplan Meier curve comparing progression-free survival in patients with prior androgen-receptor-axis inhibitor treatment with abiraterone or enzalutamide versus patients without.



Number at risk

Group: Yes

132

12

7

2

0

Group: No

293

61

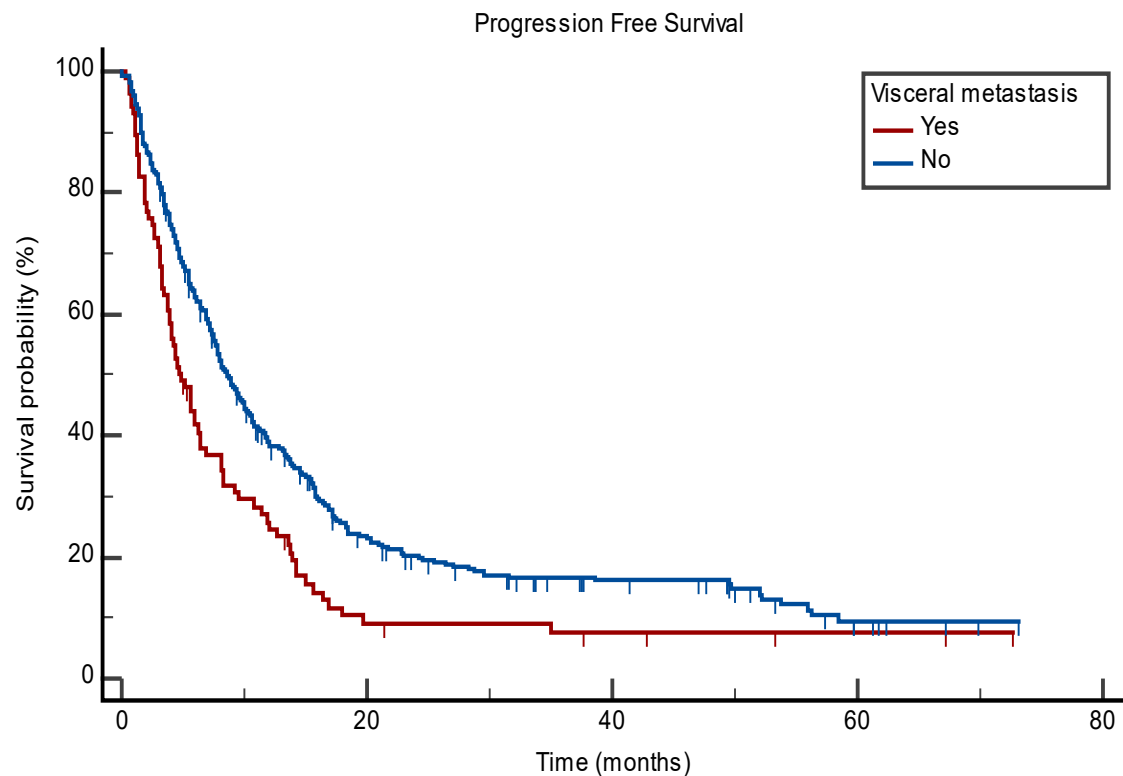
26

7

0

<sup>177</sup> Lu-PSMA	Median	95% CI for the median	Log-rank test	<i>p-value</i>
Yes	5.487	4.041 to 6.834	21.957	<0.001
No	9.331	8.049 to 11.598		

**Supplementary figure:** Kaplan Meier curve comparing progression-free survival in patients with prior <sup>177</sup>Lu-PSMA therapy versus those without.

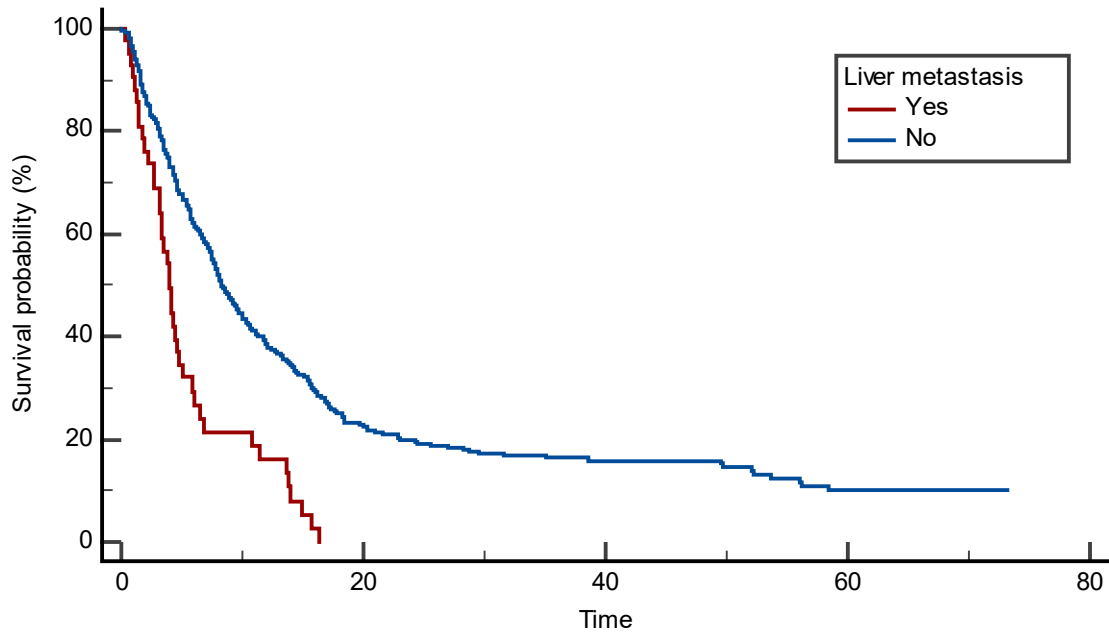


Number at risk					
Group: Yes	87	7	4	2	0
Group: No	338	66	29	7	0

Visceral metastasis	Median	95% CI for the median	Log-rank test	<i>p</i> -value
Yes	4.797	3.811 to 6.472	11.795	0.001
No	8.608	7.589 to 10.053		

**Supplementary figure:** Kaplan Meier curve comparing progression-free survival in patients with visceral metastasis versus those without.

Progression Free Survival

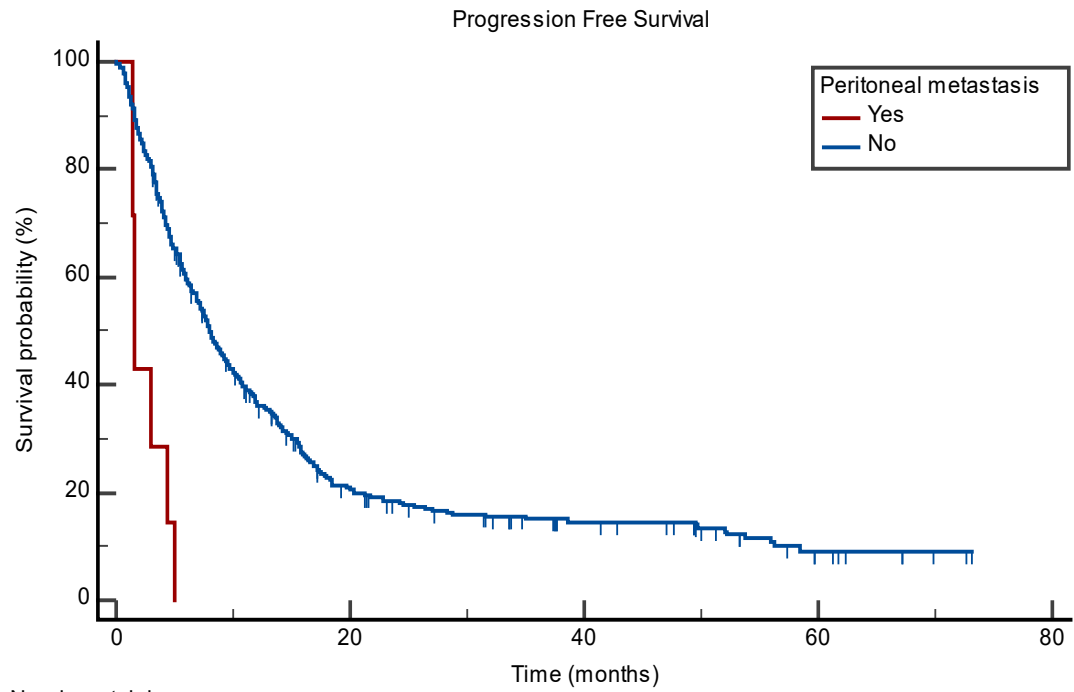


Number at risk

Group: Yes	42	0	0	0	0
Group: No	383	73	33	9	0

Liver metastasis	Median	95% CI for the median	Log-rank test	<i>p</i> -value
Yes	3.975	3.187 to 4.797	27.704	<0.001
No	8.312	7.491 to 9.626		

**Supplementary figure:** Kaplan Meier curve comparing progression-free survival in patients with liver metastasis versus those without.

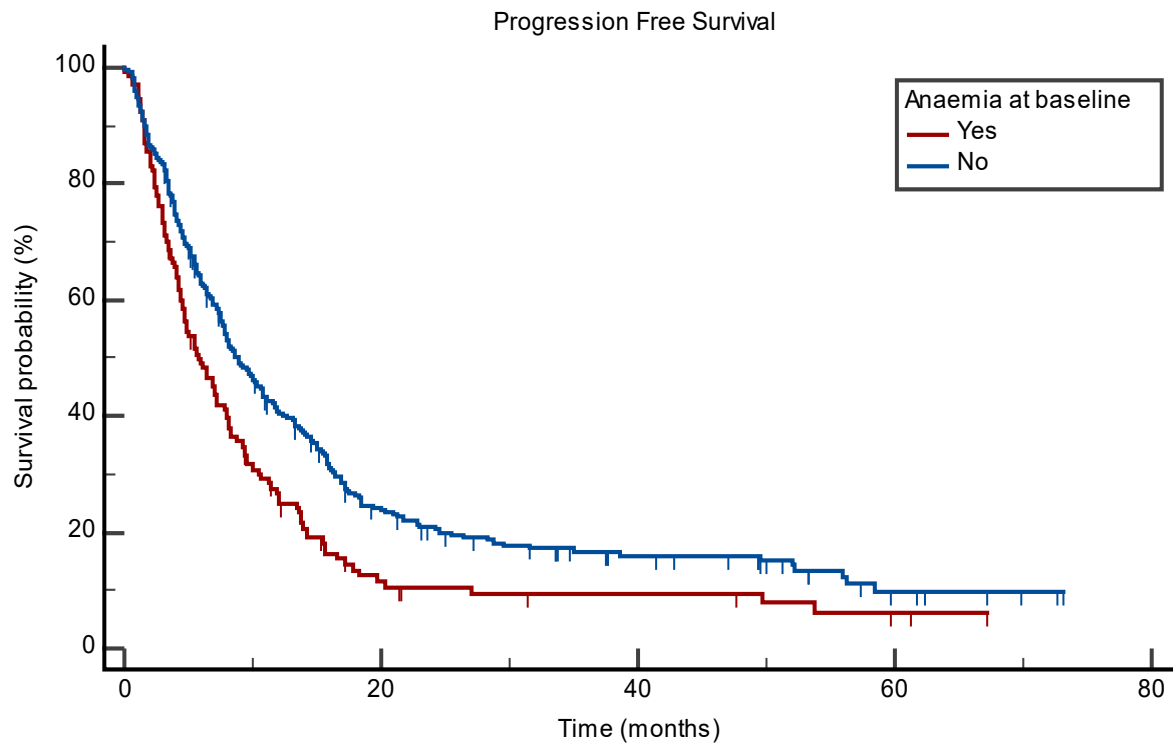


Number at risk

Group: Yes	7	0	0	0	0
Group: No	418	73	33	9	0

Peritoneal metastasis	Median	95% CI for the median	Log-rank test	p-value
Yes	1.544	1.380 to 4.435	21.915	<0.001
No	7.984	7.195 to 9.166	-	

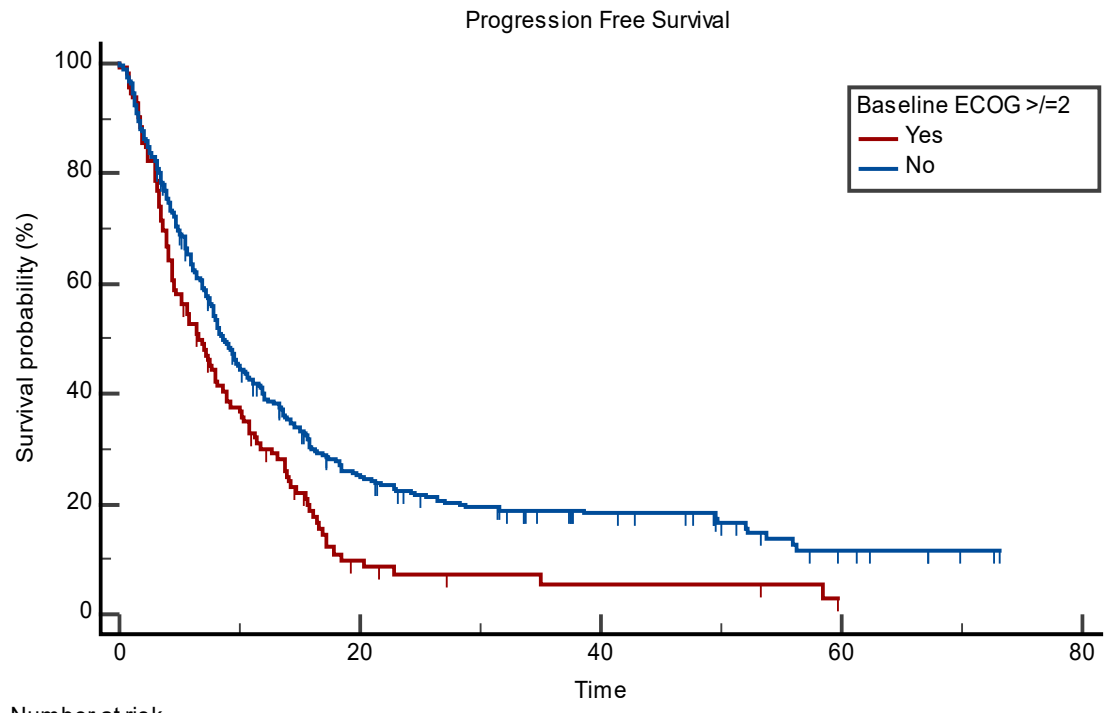
**Supplementary figure:** Kaplan Meier curve comparing progression-free survival in patients with peritoneal metastasis versus those without.



Number at risk					
Group: Yes	130	12	7	3	0
Group: No	282	58	26	6	0

Anaemia at baseline	Median	95% CI for the median	Log-rank test	<i>p</i> -value
Yes	5.749	4.567 to 7.819	10.567	0.001
No	8.838	7.589 to 10.743		

**Supplement figure:** Kaplan Meier curve comparing progression-free survival in patients with anemia at baseline versus those without.



Number at risk  
 Group: Yes  
     111           8           3           0           0  
 Group: No  
     293          63          29          8           0

Baseline ECOG $\geq 2$	Median	95% CI for the median	Log-rank test	<i>p</i> -value
Yes	6.637	4.567 to 8.608	9.661	0.002
No	8.608	7.786 to 10.349		

**Supplementary figure:** Kaplan Meier curve comparing progression-free survival in patients with baseline ECOG performance status of  $\geq 2$  versus those with performance status of 1/0.