

Supplementary Information

Table S1 Plant combinations used to test the preference of FAW in dual and multiple-choice oviposition assays

No.	Dual choice assay	Multiple choice assay
1	Maize vs millet ^a	Maize vs beans + maize
2	Maize vs cassava	Maize vs groundnut + maize
3	Maize vs sweet potato	Maize vs sweet potato + maize
4	Maize vs beans	Maize vs cassava + maize
5	Maize vs groundnut	Maize vs silverleaf desmodium + maize
6	Maize vs silverleaf desmodium	Maize vs greenleaf desmodium + maize
7	Maize vs greenleaf desmodium	

^aMillet was included in the dual choice test as a positive control from the grass family.

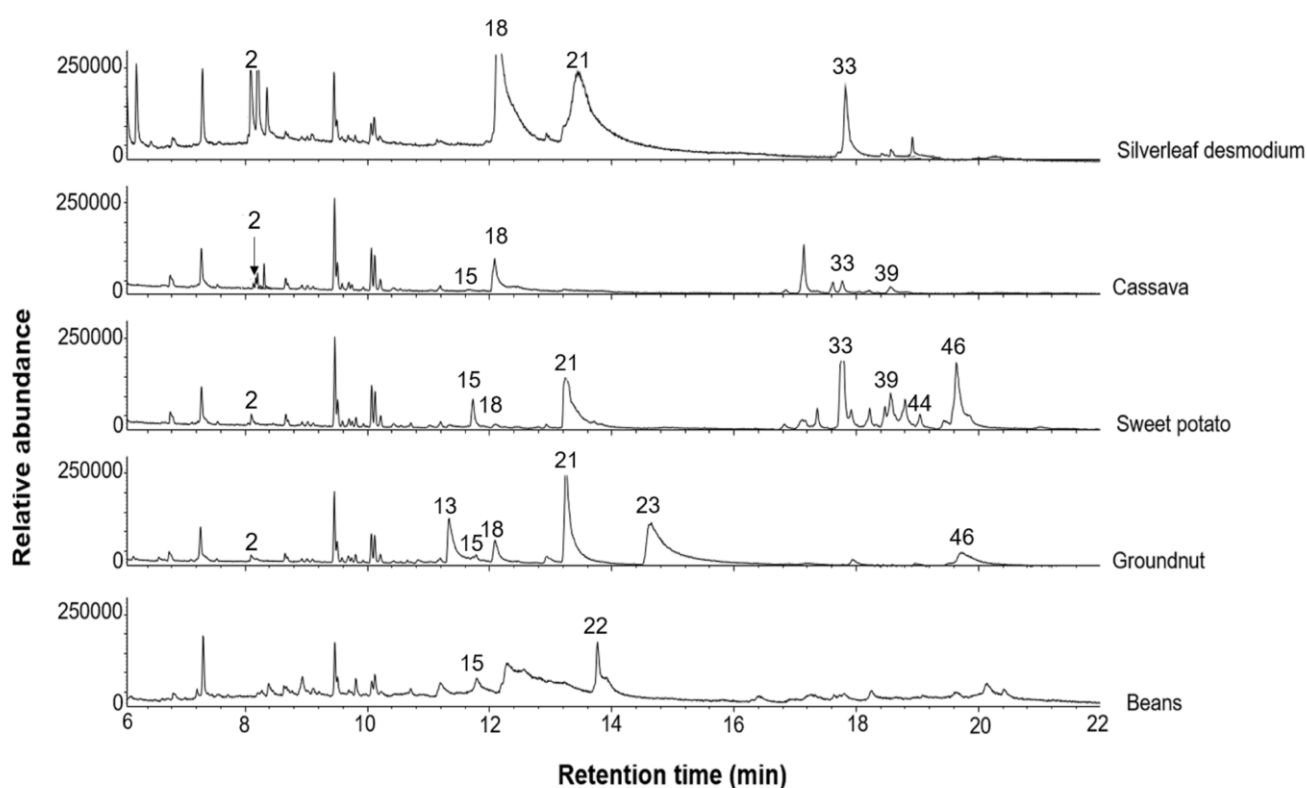


Fig. S1 Representative GC-MS profiles of companion plants. Identities of the peaks are shown in Table 2 and depict the predominant compounds based on analysis of similarities (ANOSIM)