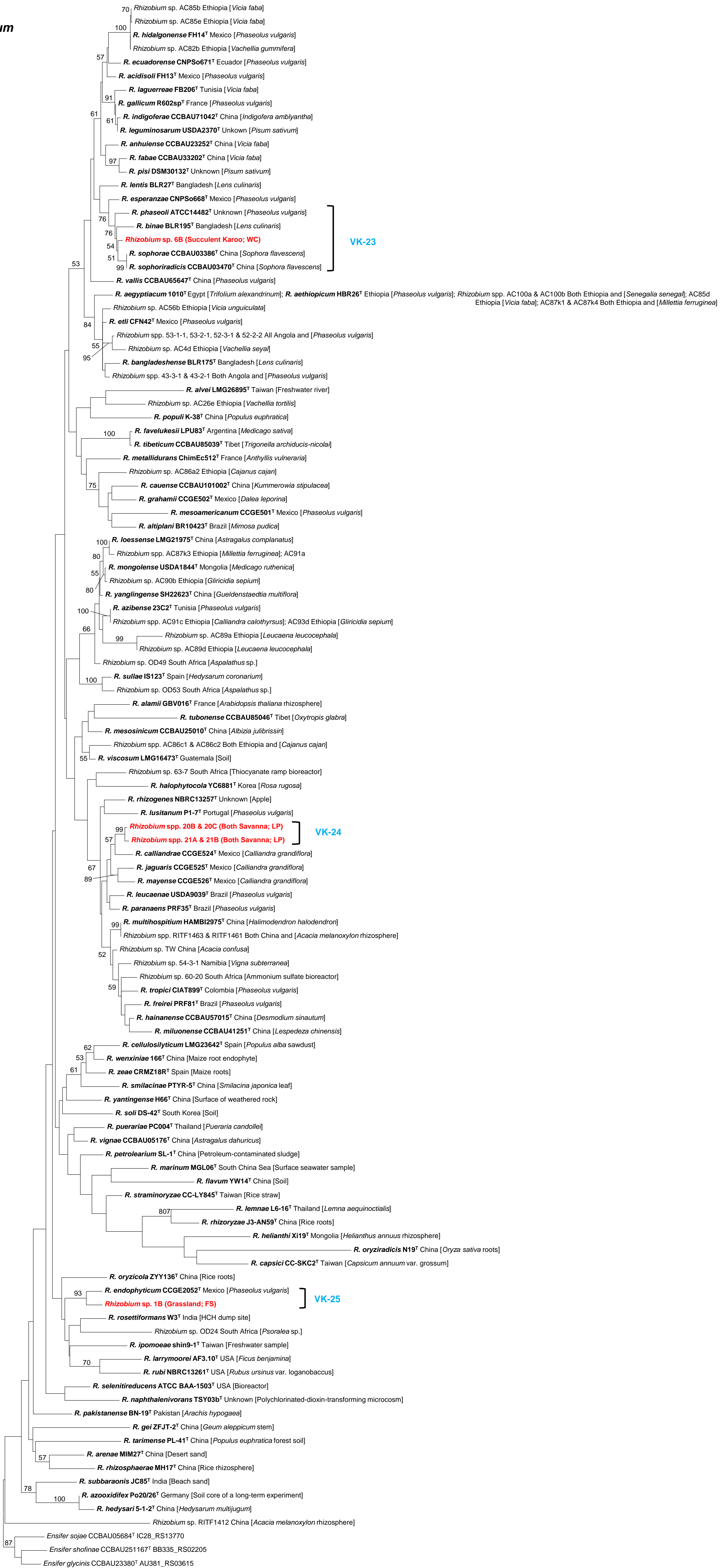


Rhizobium
recA



0.05

Suppl. Fig. S4 A *recA* maximum-likelihood phylogeny consisting of isolates of the genus *Rhizobium*. All type strains are indicated in bold, and all isolates list information for their country of origin and host or source. Isolates from this study appear in red together with the information for the biome and province (abbreviated as in Table 1) from which the 'trapping' soil originated. The lineages to which these isolates were assigned (VK-23 to VK-25) are in blue. GenBank accession numbers and the references associated with the included isolates can be found in Suppl. Table S4. Three *Ensifer* species were used as the outgroup for the analyses on which bootstrap support of $\geq 50\%$ are indicated. The scale bar indicates the number of nucleotide substitutions per site.