

Re-evaluation of *Cryptosporiopsis eucalypti* and *Cryptosporiopsis*-like species occurring on *Eucalyptus* leaves

R. Cheewangkoon · J. Z. Groenewald · G. J. M. Verkley · K. D. Hyde ·
M. J. Wingfield · M. Gryzenhout · B. A. Summerell · S. Denman · C. Toanun ·
P. W. Crous

Received: 9 March 2010 / Accepted: 8 April 2010 / Published online: 30 April 2010
© The Author(s) 2010. This article is published with open access at Springerlink.com

Abstract *Cryptosporiopsis eucalypti* is a common follicolous pathogen of *Eucalyptus* species in tropical and temperate regions where these trees are grown in plantations. The taxonomy of *C. eucalypti* is confused by the fact that it is phylogenetically unrelated to the type species of *Cryptosporiopsis* (*Cryptosporiopsis nigra* = *C. scutellata*, *Helotiales*). The aim of this study was to resolve the

taxonomic position of *C. eucalypti* based on morphology and phylogenetic inference. Thirty-two *Eucalyptus* leaf samples with symptoms typical of *C. eucalypti* infection were collected from 10 tropical and temperate countries across four continents. Cultures were established from single conidia, as well as from ascospores of a previously unreported teleomorph state. DNA sequences were obtained for the 28 S nrDNA, the internal transcribed spacers of the nrDNA operon, and beta-tubulin regions to determine generic and species-level relationships. DNA-sequence analysis showed that conidial and ascospore isolates of *C. eucalypti* have low intraspecific variation, although two collections from Australia and one from Uruguay represented two novel taxa. Based on the newly collected teleomorph stage, as well as the phylogenetic data, *C. eucalypti* is shown to represent a new genus closely related to *Plagiostoma* (*Gnomoniaceae*, *Diaporthales*) for which the names *Pseudoplagiostoma* gen. nov. and *Pseudoplagiostomaceae* fam. nov. (*Diaporthales*) are introduced. Two new species of *Cryptosporiopsis* (*Dermateaceae*, *Helotiales*) on *Eucalyptus* from Australia and California (USA) are also described.

R. Cheewangkoon · C. Toanun
Department of Plant Pathology, Faculty of Agriculture,
Chaing Mai University,
Chaing Mai 50200, Thailand

J. Z. Groenewald · G. J. M. Verkley · P. W. Crous (✉)
CBS-KNAW Fungal Biodiversity Centre,
Uppsalsalaan 8,
3584 CT Utrecht, The Netherlands
e-mail: p.crous@cbs.knaw.nl

K. D. Hyde
School of Science, Mae Fah Luang University,
Chiang Rai 57100, Thailand

K. D. Hyde
Botany and Microbiology Department, College of Science,
King Saud University,
Riyadh, Saudi Arabia

M. J. Wingfield · M. Gryzenhout
Forestry and Agricultural Biotechnology Institute (FABI),
University of Pretoria,
Pretoria 0002, South Africa

B. A. Summerell
Royal Botanic Gardens and Domain Trust,
Mrs. Macquaries Road,
Sydney NSW 2000, Australia

S. Denman
Forest Research, Alice Holt Lodge,
Farnham, Surrey GU10 4LH, UK

Keywords *Cryptosporiopsis eucalypti* · *Diaporthales* ·
DNA phylogeny · *Eucalyptus* · *Pseudoplagiostoma*

Introduction

Cryptosporiopsis eucalypti is a host-specific pathogen of *Eucalyptus* species that occurs over a wide geographical range varying from dry to very humid zones including those in Australia, India, Hawaii (Sankaran et al. 1995), New Zealand (Gadgil and Dick 1999), Brazil (Ferreira et al.

1998), Japan, Laos, Indonesia, Sri Lanka, Thailand and Vietnam (Old and Yuan 1994; Old et al. 2003). The fungus can be associated with various disease symptoms including leaf spots, shoot blight, cankers on woody tissue, defoliation and even tree death.

The leaf spots develop on both sides of leaves and vary in size, shape, and colour among *Eucalyptus* species (Sharma 1994; Sankaran et al. 1995; Old et al. 2002, 2003). The fungus proliferates by producing a vast number of spores from conidiomata that develop on infected leaves and shoots. After causing death of shoot tips or small branches, repeated infection can occur over extended periods of time. Leaf blight and other foliar diseases induced by *C. eucalypti* can easily be confused with those caused by other plant-pathogenic fungi, such as *Mycosphaerella* spp. and their anamorphs (Cheewangkoon et al. 2008, 2009; Crous 2009), and *Calonectria* (Crous et al. 2004b, 2006a; Lombard et al. 2009, 2010).

Although infection by *C. eucalypti* can eventually lead to yield reduction of *Eucalyptus* plantations, the biology of this pathogen is not well understood. Infection often appears to be associated with minor mechanical, insect or wind damage (Ciesla et al. 1996), or with lesions caused primarily by *Calonectria* spp. (Park et al. 2000; Crous 2002). Old and Yuan (1999) also reported the co-occurrence of *C. eucalypti* with *Pilidiella* species (as *Coniella*; Van Niekerk et al. 2004) on *E. camaldulensis*, showing serious defoliation in the North Queensland region of Australia. Cryptosporiopsis foliar disease develops under conditions of high humidity, and the optimum temperature for its growth and sporulation on agar is 25–26°C, while temperatures of 32°C or above appear to limit disease development. In contrast, low ambient temperatures may be a predisposing factor for initiation of disease (Sankaran et al. 1995). Spread of *C. eucalypti* is probably through wind and rain splash dissemination, and it is unknown whether the fungus can be spread via contaminated seed or chaff commonly found in seed lots (Ciesla et al. 1996).

Cryptosporiopsis eucalypti was first described by Sankaran et al. (1995). Verkley (1999) suggested that it differs from typical *Cryptosporiopsis* anamorphs by only having acervuloid conidiomata with discrete conidiogenous cells, lacking any stromatic tissue in culture. In contrast many species of *Cryptosporiopsis* s. str. as typified by *C. scutellata* (syn. *C. nigra*), anamorph of *Pezicula ocellata*, form integrated conidiogenous cells on conidiophores, and in culture, are always associated with stromatic tissue.

Cryptosporiopsis eucalypti was nonetheless accepted in *Cryptosporiopsis* by Verkley (1999) based on its morphological characteristics. Species of *Cryptosporiopsis* have known teleomorphs in *Pezicula* and *Neofabraea* (*Dermateaceae*, *Helotiales*; Sutton 1980; Verkley 1999), though presently no teleomorph has yet been linked to *C. eucalypti*.

During routine surveys of *Eucalyptus* leaf diseases, an unknown ascomatal fungus was found associated with leaf spots resembling those caused by *C. eucalypti*. Because single ascospore isolates produced typical *C. eucalypti* colonies in culture, these strains were included in a phylogenetic study pursuing the hypothesis that it might represent the teleomorph of *C. eucalypti*. Furthermore, based on preliminary phylogenetic data for *C. eucalypti* and similar fungi, we concluded that these taxa could not be accommodated in the *Dermateaceae* (*Helotiales*), but rather that they represented a novel clade in the *Diaporthales* (unpubl. data).

The aim of this study was to consider the phylogenetic relationships among *C. eucalypti*-like fungi collected from *Eucalyptus* leaves and twigs in many parts of the world. This was achieved by employing sequences of the internal transcribed spacer (ITS) sequences of the nuclear ribosomal DNA operon (ITS1, 5.8 S nrDNA and ITS2) and the β -tubulin (TUB) gene. Furthermore, to resolve their higher order phylogeny, sequences were generated from the 28 nrRNA (LSU) gene. For morphological comparisons, isolates were studied on a range of culture media and growth conditions.

Materials and methods

Isolates

Lesions bearing ascomata were cut from *Eucalyptus* leaves, soaked in distilled water for 2 h, and then attached to the inside lower surfaces of Petri dish lids, with the top halves of dishes containing 2% malt extract agar (MEA; Oxoid, Hampshire, England). Germinating ascospores on the agar surface were examined after 24 h, and single ascospore cultures were established as described earlier (Crous et al. 1991; Crous 1998).

Eucalyptus leaves were incubated in moist chambers for up to 2 wk, and single conidial colonies established from sporulating conidiomata (Crous 2002). Colonies were sub-cultured onto 2% potato-dextrose agar (PDA), synthetic nutrient-poor agar (SNA), MEA, oatmeal agar (OA; Crous et al. 2009), and pine needle agar (2% tap water agar, with sterile pine needles) (PNA; Crous et al. 2006b), and incubated under continuous near-ultraviolet light at 25°C to promote sporulation. Nomenclatural novelties with their descriptions were recorded in MycoBank (www.MycoBank.org; Crous et al. 2004a). All cultures obtained in this study are maintained in the culture collection of the CBS-KNAW Fungal Biodiversity Centre (CBS) in Utrecht, the Netherlands, and/or the working collection (CPC) of P.W. Crous (Table 1).

DNA isolation, amplification and phylogeny

Genomic DNA was isolated from fungal mycelium grown on MEA, using the UltraClean® Microbial DNA Isolation Kit (Mo-Bio Laboratories, Inc., Solana Beach, CA, USA) following the manufacturer's protocols. The primers V9G (de Hoog and Gerrits van den Ende 1998) and LR5 (Vilgalys and Hester 1990) were used to amplify part of the nuclear rDNA operon spanning the 3' end of the 18 S rRNA gene (SSU), the first internal transcribed spacer (ITS1), the 5.8 S rRNA gene, the second ITS region (ITS2) and the first 900 bases at the 5' end of the 28 S rRNA gene (LSU). The primers ITS4 (White et al. 1990) and LR0R (Rehner and Samuels 1994) were used as internal sequence primers to ensure good quality sequences over the entire length of the amplicon. To resolve species identities, the ITS region was supplemented with sequences of the β -tubulin gene (TUB) using the primers T1 (O'Donnell and Cigelnik 1997) and Bt-2b (Glass and Donaldson 1995). The PCR conditions, sequence alignment and subsequent phylogenetic analyses followed the methods of Crous et al. (2006a). Sequences were compared with those available in NCBI's GenBank nucleotide (nr) database using a megablast search and results are provided in the relevant species notes where applicable. Alignment gaps were treated as fifth character states. Sequence data were deposited in GenBank (Table 1) and alignments in TreeBASE (www.treebase.org).

Morphology

Isolates were plated onto fresh MEA, OA, PDA and PNA plates, and subsequently incubated at 25°C under near-ultraviolet light to promote sporulation. Fungal structures were mounted on glass slides in clear lactic acid for microscopic examination. Sections of ascospores were made by hand for examination purposes. Measurements of all taxonomically relevant characters were made at 1,000× magnification by Nikon NIS-Elements D3.0 Imaging Software, with 50 measurements per structure where possible. Colony colours on MEA (surface and reverse) were determined using the colour charts of Rayner (1970) after 1–2 wk at 25°C in the dark.

Results

Phylogenetic analysis

Approximately 1,700 bases, spanning the ITS and LSU regions, were obtained for isolates listed in Table 1. The LSU region was used in the phylogenetic analysis to determine generic or family placements and ITS sequences

were used to determine species-level relationships. The LSU alignment contained 78 taxa (including the outgroup sequence) and, of the 753 characters used in the phylogenetic analysis, 214 were parsimony-informative, 53 were variable and parsimony-uninformative and 486 were constant. The first 1,000 equally most parsimonious trees were kept from the heuristic search, the first of which is shown in Fig. 1 (TL=784, CI=0.490, RI=0.883, RC=0.433). The phylogenetic tree for the LSU region (Fig. 1) revealed the family relationships for the isolates within *Diaporthales* and *Helotiales*. Isolates that had been tentatively identified as *C. eucalypti* did not reside in any existing family, and a new genus and family is introduced below to accommodate them.

A second alignment of sequences for the *C. eucalypti* isolates based on ITS and TUB sequences included a combined set of 1,256 characters (incl. alignment gaps) (number of included characters: ITS: 525 and TUB: 731). Of the 32 sequences used (including the outgroup), 386 characters were parsimony-informative, 91 were variable and parsimony-uninformative, and 779 were constant. A total of 212 equally most parsimonious trees were obtained from the heuristic search, the first of which is shown in Fig. 2 (TL=524, CI=0.987, RI=0.984, RC=0.971). Isolates originally identified as "*C. eucalypti*" were found to represent two novel species of *Cryptosporiopsis*, and three novel species that represented a new genus and family (Figs. 1, 2). Further results are discussed in the species notes sections below where applicable.

Morphology

Results of this study led to the discovery of two novel species of *Cryptosporiopsis s.str.* on *Eucalyptus*. Furthermore, single ascospore isolates of a diaporthalean fungus produced colonies typical of *C. eucalypti* in culture. Phylogenetic analyses of sequence data showed that this collection represents a previously undescribed genus and family, which are treated below.

Cryptosporiopsis californiae Cheewangkoon, Denman & Crous, **sp. nov.** Fig. 3

Mycobank MB516493.

Etymology: Named for the state of California, USA where the fungus was collected.

Maculae amphigenae, subcirculares ad irregulares, brunneae. **Conidiomata** pycnidialia ad acervularia, superficialia vel pro parte immersa, brunnea ad atrobrunnea, discreta vel confluentia, 80–130 μm diam, 45–70 μm alta. **Conidiphora** nulla vel ad 1–2 cellulis brevibus reducta sunt. **Cellulae conidiogenae** discretae, phialidicae, incrassatae, cylindricae, plerumque infra apice leniter inflatae, hyalinae, (4–)8–11(–16) \times 2.5–3.5 μm . **Conidia** elongate ellipsoidea, recta vel leniter curvata, nonnulla inaequilateralia, apex

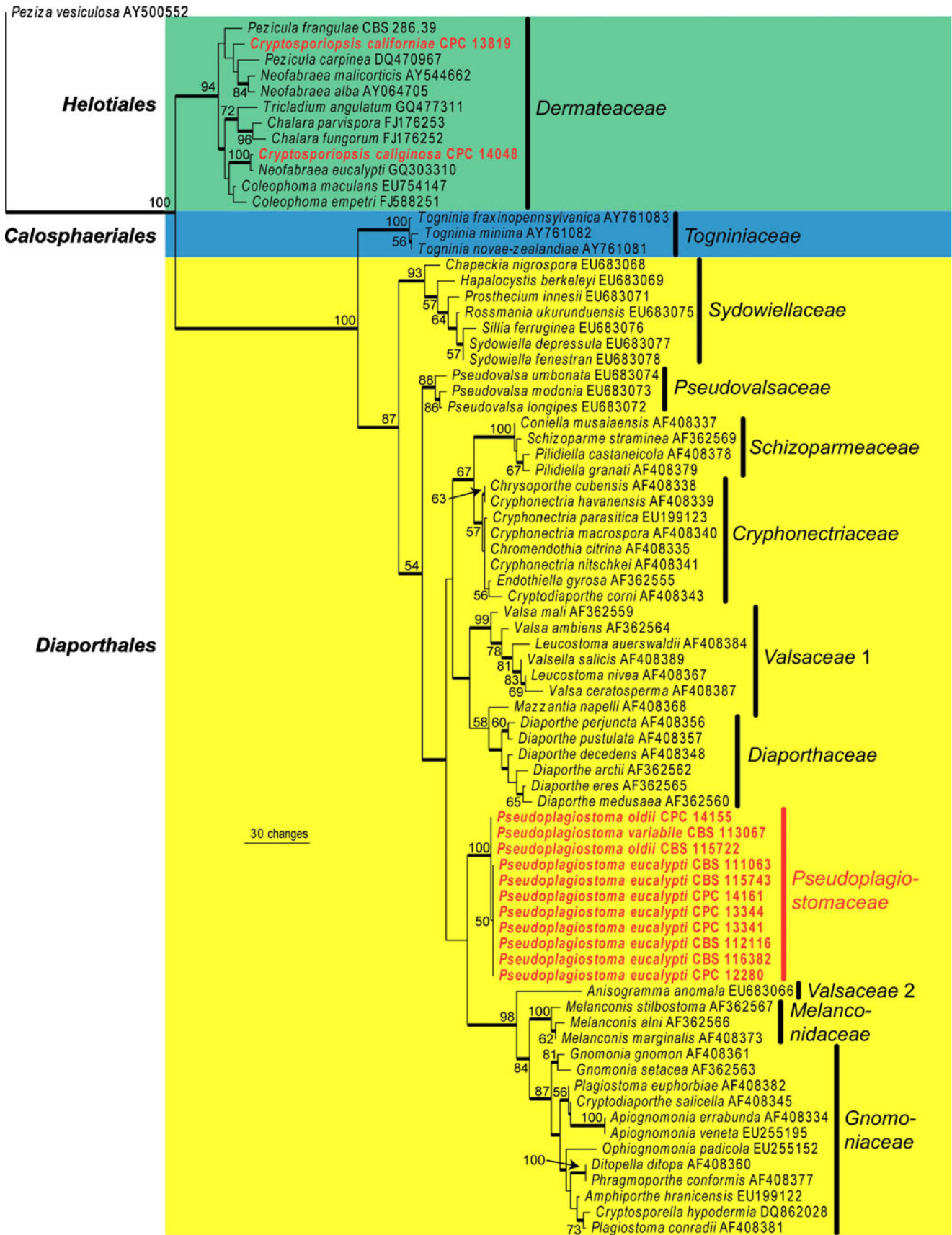


Fig. 1 The first of 1,000 equally most parsimonious trees obtained from a heuristic search with 100 random taxon additions of the LSU sequence alignment. The scale bar shows 30 changes, and bootstrap support values from 1,000 replicates are shown at the nodes. Novel species and families described in this study are shown in red. Branches present in the strict consensus tree are thickened. Orders are indicated to the left and families to the right of the tree. The tree was rooted to a sequence of *Peziza vesiculosa* (GenBank accession AY500552)

obtusus vel late acutus, basi abrupte angustata hilo leniter protrudente, 1.5–2 µm lato, aseptata, hyalina, crassitunicata, guttulis 5–30 minutis, (12.5–)15–18(–27.5)×(4.2–)4.5–5.2(–5.8) µm.

Leaf spots amphigenous, subcircular to irregular, medium brown. On PNA: *mycelium* immersed, consisting of branched, hyaline to very pale brown, 2.5–3.5 µm wide hyphae. *Conidiomata* pycnidial to acervular, superficial or partly immersed, medium to dark brown, with cream conidial masses; separate or confluent, 80–130 µm diam, 45–70 µm high; wall dark brown, pseudoparenchymatous, thick, composed of irregular, medium brown cells that become pale brown towards the inner region, 8–15 µm thick; stroma weakly developed, 5–10 µm thick, paler in non-pycnidial conidiomata, consisting of numerous sterile hyphae. *Conidiophores* absent, or reduced to 1–2 short supporting cells. *Conidiogenous cells* arise from the inner cells of the cavity, discrete, phialidic, thickened, cylindrical, mostly slightly enlarged below the apex, hyaline, (4–)8–11(–16)×2.5–3.5 µm. *Conidia* elongate ellipsoidal, straight or slightly curved, some inaequilateral, apex obtuse or broadly acute, tapering abruptly to a slightly protruding scar at the base, 1.5–2 µm wide; aseptate, hyaline, thick-walled, with 5–30 min guttules per conidium, (12.5–)15–18(–27.5)×(4.2–)4.5–5.2(–5.8) µm.

Culture characteristics: Colonies reaching 4 cm diam on MEA after 1 wk at 25°C, slightly raised, olivaceous-grey to buff (surface), with white margin, and dense white aerial mycelium; yellow-brown (reverse). Numerous black pycnidia are produced on the colony surface that is partly submerged, irregular.

Specimen examined: USA, California, on *Eucalyptus* sp., Mar. 2009, S. Denman, **holotype** CBS H-20302, culture ex-type CPC 13819=CBS 124819, CPC 13820, 13821.

Notes: Numerous pycnidia are formed on OA after about 3 wk, which become fertile after 5 wk. Conidia are mostly similar in shape and size to those formed on PNA, but slightly shorter. Based on conidial size, *C. californiae* (12.5–27.5×4.2–5.8 µm) is easily distinguished from *C. edgertonii* (30–48×12–15 µm), which also occurs on *Eucalyptus* (Edgerton 1908). Although *C. californiae* may occur on other hosts, we were unable to

locate a name for it, and BLAST results for its ITS sequences did not reveal its presence in GenBank. The ITS sequence of this species had an E-value of 0.0 with the ITS sequences of *Pezizula* spp. and *Cryptosporiopsis* spp. such as *P. carpinea* (AF141197; 95 % identical), *P. heterochroma* (AF141167; 95 % identical), *P. sporulosa* (AF141172; 94 % identical), *C. radicolica* (AF141193; 95 % identical), *C. melanigena* (AF141196; 94 % identical) and others.

Cryptosporiopsis caliginosa Cheewangkoon, Summerell & Crous, **sp. nov.** Fig. 4

Mycobank MB516494.

Etymology: Name refers to *Eucalyptus caliginosa*, on which the fungus was collected.

Maculae amphigenae, subcirculares ad irregulares, brunneae. *Conidiomata* in foliis acervularia, subcuticularia ad epidermalia, pallide brunnea, discreta, 2–3 strata texturæ angularis composita, ad 200 µm diam, 150–200 µm alta. *Conidiophora* nulla. *Cellulae conidiogenae* discretæ, phialidicae, cylindricae, hyalinae, rectae vel leniter curvatae, glabrae, (14.5–)16–18(–20)×4.5–6 µm. *Conidia* elongate ellipsoidea, plerumque recta, apice late obtuso, basi abrupte angustata in hilum leniter protrudens, aseptata, hyalina, crassitunicata, minute guttulate, (8.5–)15–17(–19)×(3.5–)4.5–5.5 µm.

Leaf spots amphigenous, subcircular to irregular, medium brown. *Conidiomata* on leaves acervular, subcuticular to epidermal, pale brown, separate, consisting of 2–3 layers of *textura angularis*, up to 200 µm diam, 150–200 µm high; dehiscence irregular, by rupture of the overlying host tissues. *Conidiophores* absent. *Conidiogenous cells* arise from the inner cells of the cavity, discrete, phialidic, cylindrical, hyaline, straight to slightly curved, smooth, (14.5–)16–18(–20)×4.5–6 µm. *Conidia* elongate ellipsoidal, mostly straight, broadly obtuse at the apex, tapering abruptly to a slightly protruding basal scar, aseptate, hyaline, thick-walled, minutely guttulate, (8.5–)15–17(–19)×(3.5–)4.5–5.5 µm.

Specimen examined: AUSTRALIA, New South Wales, Northern Tablelands, Mt Mackenzie Nature Reserve (290504S; 1515805E) on *Eucalyptus caliginosa*, 1 Feb. 2007, B.A. Summerell, **holotype** CBS H-20301, culture ex-type CPC 14048=CBS 124806, CPC 14049, 14050.

Culture characteristics: Colonies on OA reaching 3 cm after 1 wk at 25°C in the dark, subcircular, raised, with even margin and slightly folded surface, with dense, white aerial mycelium, partly submerged, buff to white, conidia not formed in culture.

Notes: *Cryptosporiopsis caliginosa* (conidia 8.5–19 µm long) is easily distinguishable from *C. californiae*, which has longer conidia (12.5–27.5 µm). BLAST results for the ITS sequence of this species had an E-value of 0.0 with

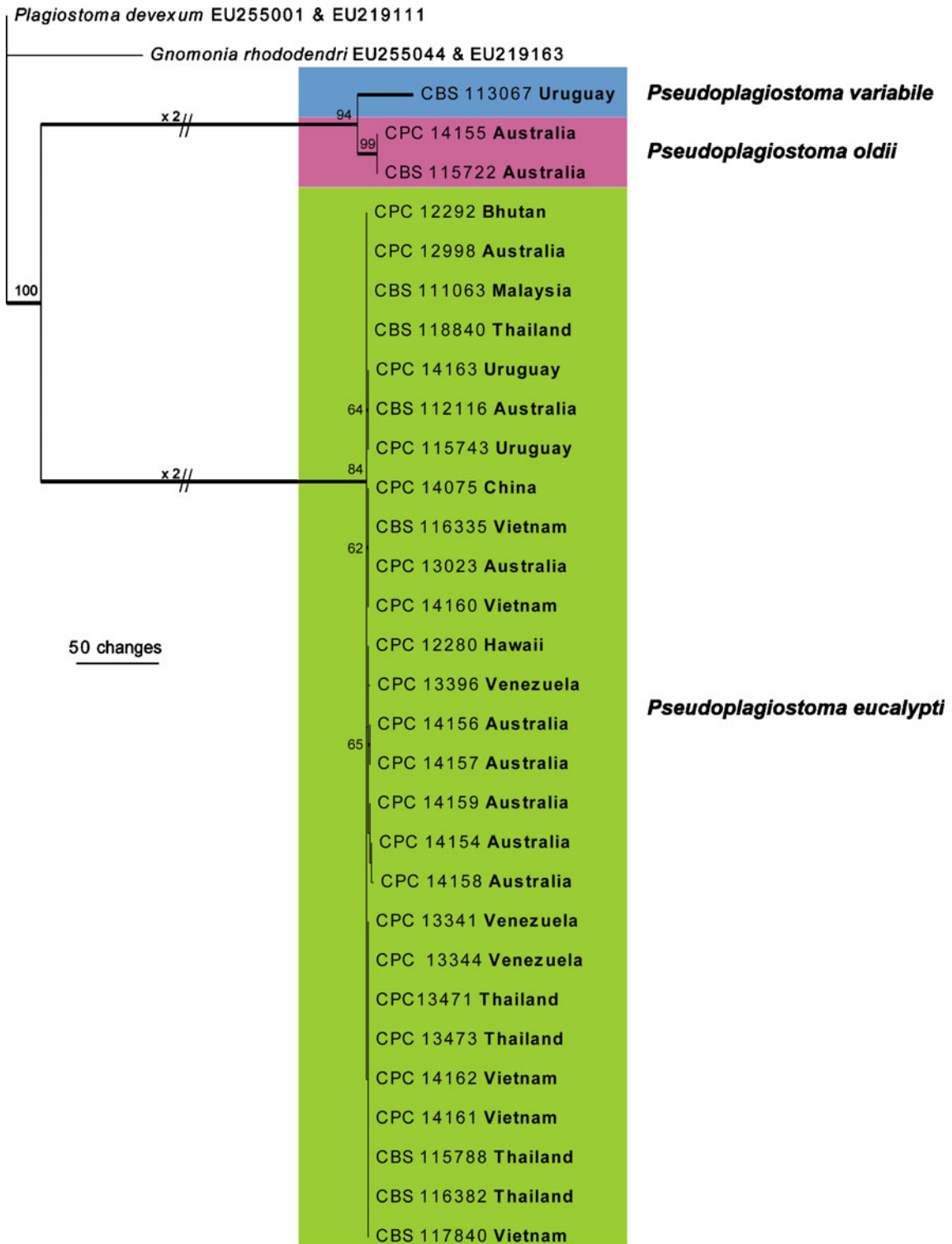


Fig. 2 The first of 212 equally most parsimonious trees obtained from a heuristic search with 100 random taxon additions of the combined ITS and TUB sequence alignment. The scale bar shows 50 changes, and bootstrap support values from 1,000 replicates are shown at the

nodes. Branches present in the strict consensus tree are thickened. The tree was rooted to sequences of *Plagiostoma devexum* (GenBank accession ITS: EU255001; TUB: EU219111) and *Gnomonia rhododendri* (GenBank accession ITS: EU255044; TUB: EU219163)

the ITS sequences of *Neofabraea eucalypti* (GQ303279; 97 % identical), *Gloeosporium* sp. (EF672242; 92 % identical), *Coleophoma empetri* (FJ480134; 92 % identical) and others.

Pseudoplagiostomaceae Cheewangkoon, M.J. Wingf. & Crous, **fam. nov.**

MycoBank MB516495.

Perithecia immersa, obliqua vel horizontalia; subglobosa vel elliptica; rostrum excentricum vel laterale, stroma non formatum. *Asci* unitunicati, annulo subapicali nonamyloideo, aparaphysati. *Ascospores* uniseptatae, hyalinae, appendicibus terminalibus elongatis hyalinis.

Members of the *Diaporthales* having morphological characters of the genus *Pseudoplagiostoma*. Immersed, oblique to horizontal perithecia in host tissue; depressed

globose or elliptical; beak eccentric to lateral; stromatic tissue not formed. *Asci* unitunicate, with non-amyloid subapical ring, lacking paraphyses. *Ascospores* hyaline, 1-septate, with terminal, elongate, hyaline appendages.

Type genus: Pseudoplagiostoma Cheewangkoon, M.J. Wingf. & Crous

Notes: Of the families presently known from the *Diaporthales* (Wehmeyer 1975; Castlebury et al. 2002; Gryzenhout et al. 2006; Rossman et al. 2007; Voglmayr and Jaklitsch 2008), the *Pseudoplagiostomaceae* most closely resembles the *Gnomoniaceae* in the morphological characters of its teleomorph, such as solitary, thin-walled, immersed ascomata with lateral beaks lacking stromata, asci with a distinct ring, and medianly 1-septate ascospores less than 25 mm long (Monod 1983; Castlebury et al. 2002; Sogonov et al. 2008). Phylogenetically, *Pseudoplagiostro-*

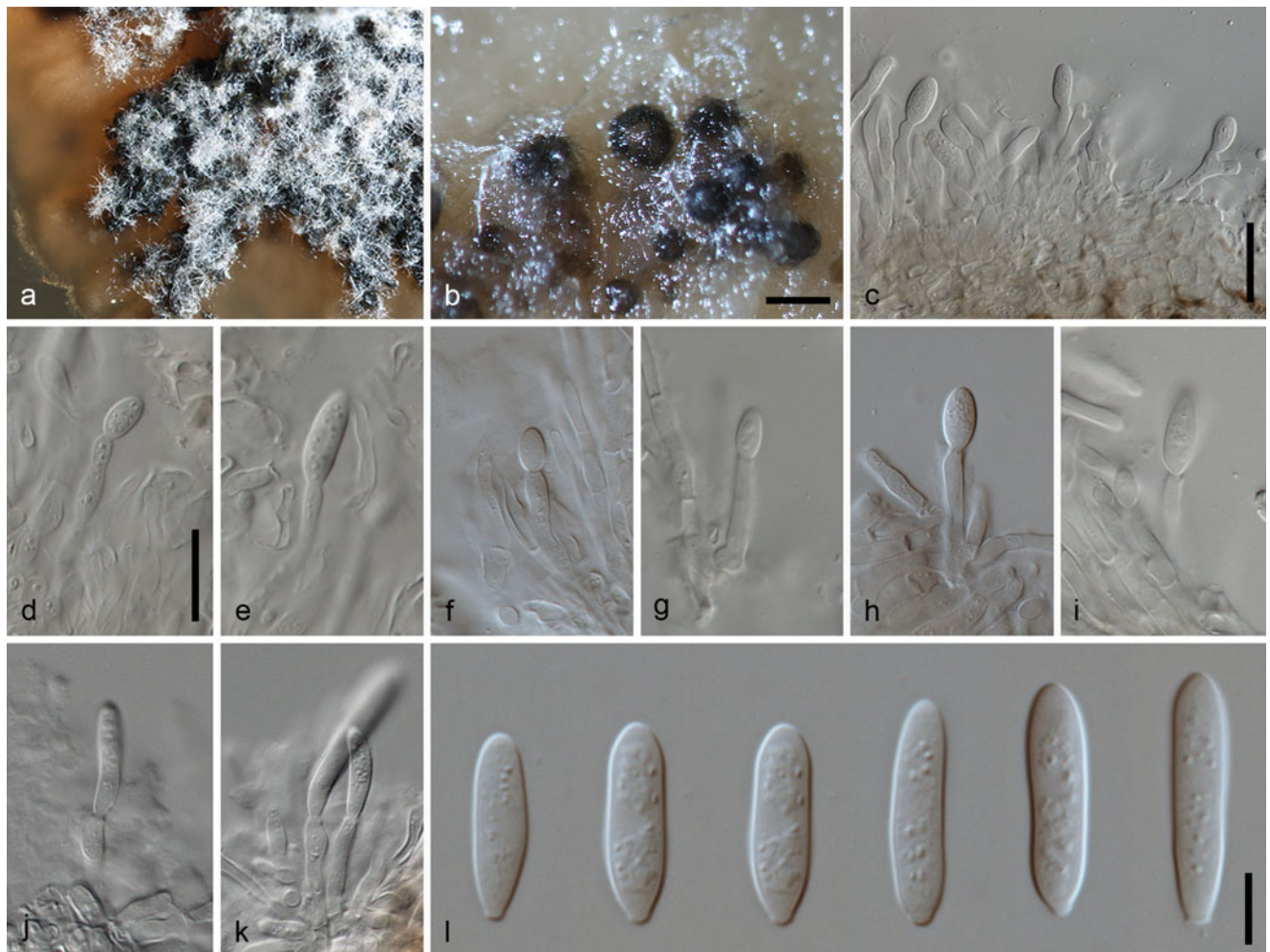


Fig. 3 *Cryptosporiopsis californiae*. a. Colony on MEA. b. Conidiomata on MEA. c–k. Conidia and phialidic conidiogenous cells. l. Conidia. Scale bars: b=150 μ m, c–k=15 μ m, l=10 μ m; d applies to d–k

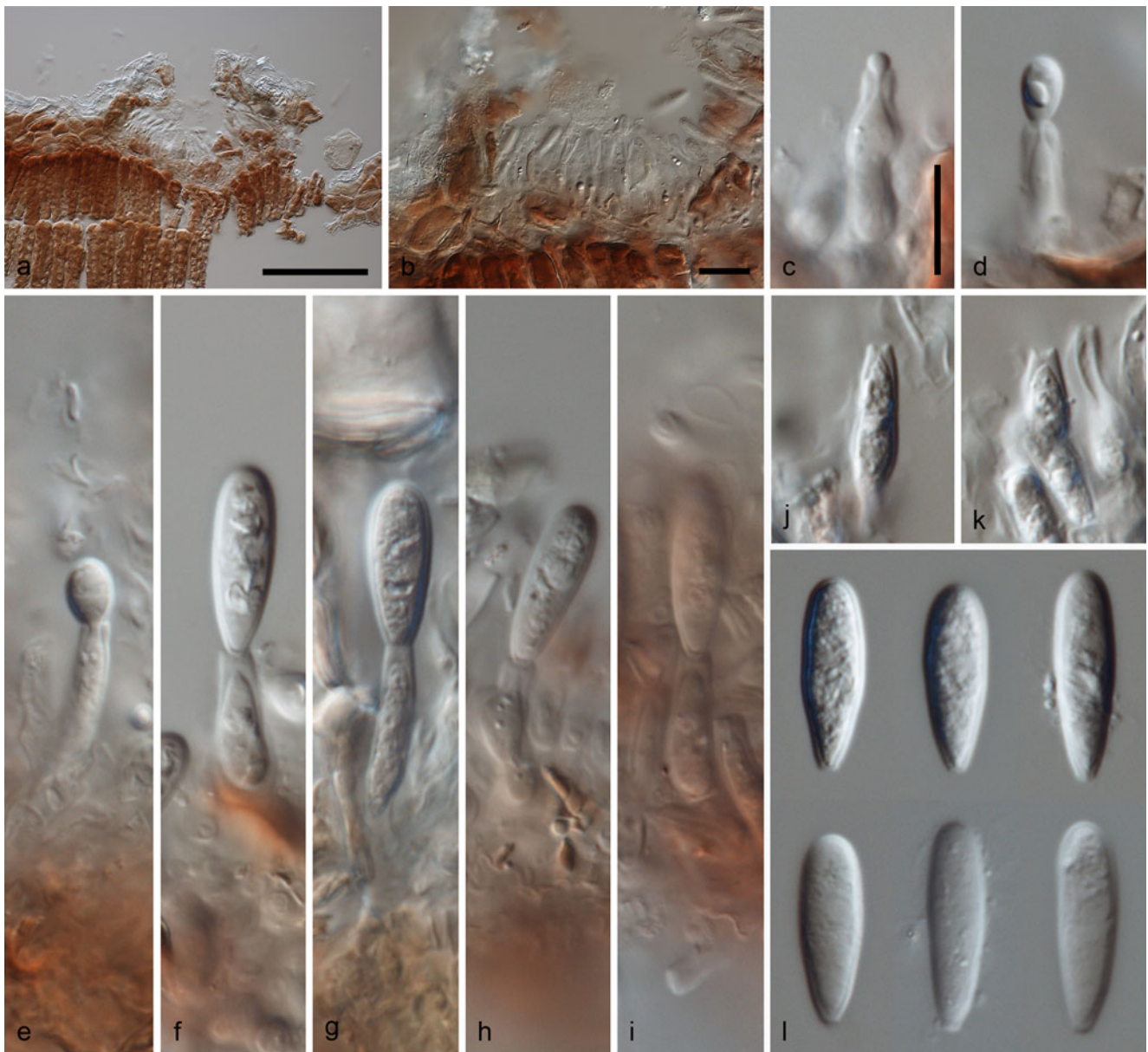


Fig. 4 *Cryptosporiopsis caliginosa*. a, b. Conidiomata on host substrate. c–i. Conidia attached to phialidic conidiogenous cells. j, k. Conidiogenous cells. l. Conidia. Scale bars: a=100 μ m, b=20 μ m, c–l=10 μ m; c applies to c–l

maceae is closer to families with well-developed stromatic tissue such as *Diaporthaceae* and *Pseudovalsaceae*, or families with stromatic and non-stromatic tissues such as *Valsaceae* and *Sydowiellaceae*.

Pseudoplagiostoma Cheewangkoon, M.J. Wingf. & Crous, **gen. nov.**

Mycobank MB516496.

Etymology: Named reflects morphological similarity to *Plagiostoma*.

Ascomata perithecia, immersa, obliqua ad horizontalia, subglobosa vel elliptica, atrobrunnea ad nigra; rostrum

vulgo in epiphyllis erumpens, excentricum ad laterale; ostiolum periphysatum; peridium coriaceum, stroma non formatum. **Asci** subcylindrici ad elongate obovoidei, aparaphysati, unitunicati, annulo subapicali nonamyloideo. **Ascospores** hyalinae, ellipsoideae, utrinque rotundatae, plerumque rectae, in medio uniseptatae, glabrae, appendicibus terminalibus elongatis hyalinis. **Conidiomata** acervularia ad pycnidialia, subcuticularia ad epidermalia, paries texturae angularis compositus. **Conidiophora** nulla. **Cellulae conidiogenae** cylindricae ad ampulliformes, enteroblasticaliter proliferantes, tunica periclinaliter incrassata colluloque, vel parte apicali percurrenter

proliferentes. *Conidia* holoblastica, ellipsoidea, apice obtuso et basi hilo plano protrudente, continua.

Ascomata perithecial, immersed in host tissue, oblique to horizontal, depressed globose or elliptical, dark brown to

black; beak usually erumpent epiphyllously, eccentric to lateral; ostiole lined with periphyses; peridium coriaceous, with sparse hyphae visible growing into the host tissue; stromatic tissue not formed. *Asci* subcylindrical to long

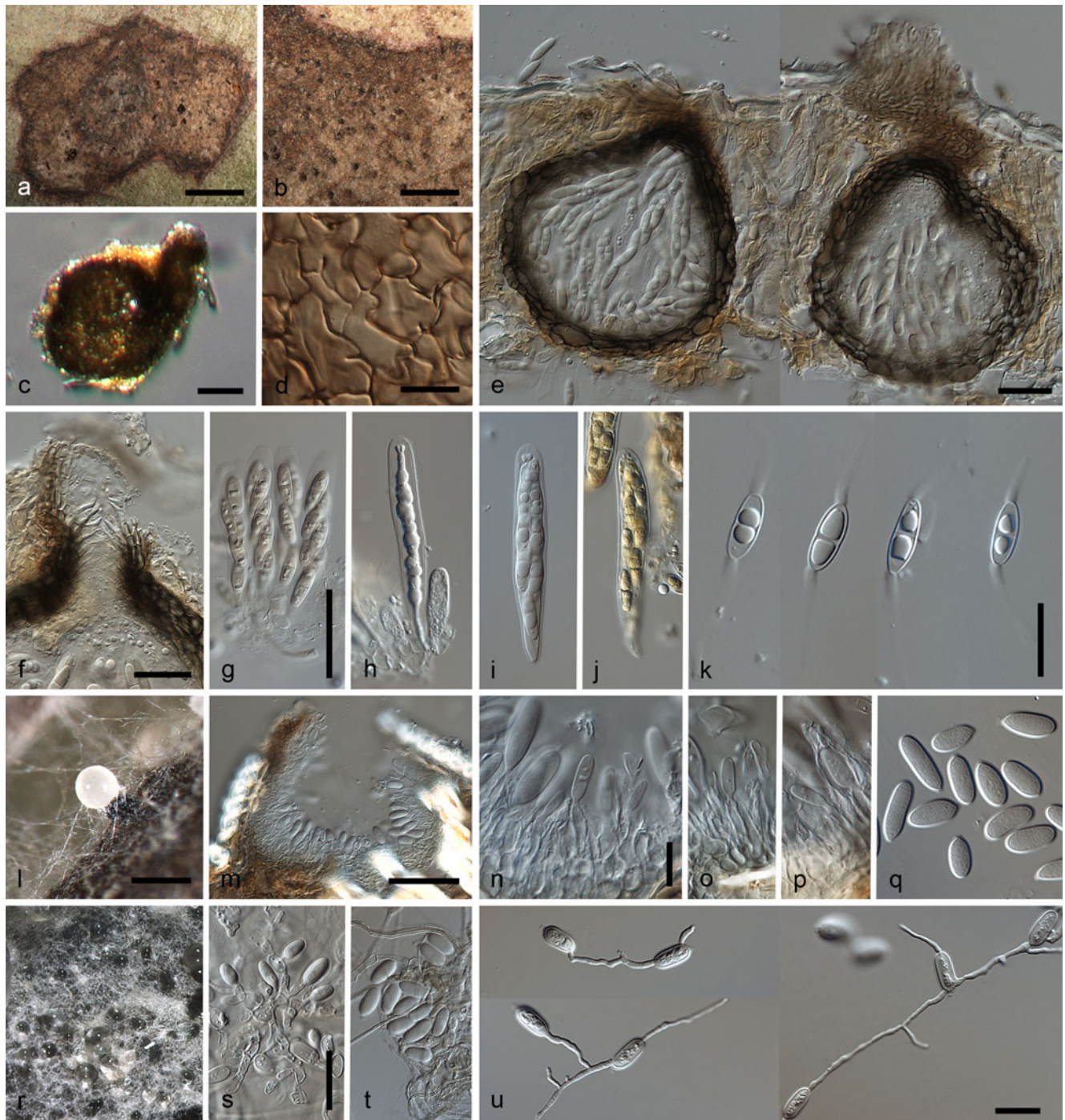


Fig. 5 *Pseudoplagiostoma eucalypti*. a. Leaf spot. b, c. Ascomata. d. Ascomatal wall. e. Cross section through ascomata. f. Ostiole. g. Asci. h. Young ascus. i. Mature ascus. j. Ascus strained in Melzer's reagent, showing non-amyloid subapical ring. k. Ascospores. l. Conidiomata. m. Cross section through conidiomata. n–p. Conidia attached to conidiogenous cells with percurrent proliferation. q. Conidia. r.

Colony on MEA. s, t. Conidia and conidiogenous cells. u. Microcyclic conidiation. a–k: From *Eucalyptus* leaves. l–q: From PNA. r–u: From MEA. Scale bars: a=5 mm, b=1 mm, c, e=50 μ m, d=5 μ m, f–j=30 μ m, k, s–u=20 μ m, l=200 μ m, m=70 μ m, n–q=15 μ m; g applies to n–q; s applies to s–t

obovoid, lacking paraphyses, unitunicate, with non-amyloid subapical ring, wedge-shaped, refractive, with canal leading to the apex. *Ascospores* hyaline, ellipsoidal, tapering towards rounded ends, usually straight, medianly 1-septate, wall smooth, with terminal, elongate, hyaline appendages. *Conidiomata* acervular to pycnidial, subcuticular to epidermal, wall composed of *textura angularis*. *Conidiophores* absent. *Conidiogenous cells* cylindrical to ampulliform, proliferating enteroblastically with periclinal thickening and collarette, or percurrently proliferating in the apical part. *Conidia* holoblastic, ellipsoid, with obtuse apex and a flat protruding scar at the base, 0-septate.

Type species: Pseudoplagiostoma eucalypti Cheewangkoon, M.J. Wingf. & Crous

Pseudoplagiostoma eucalypti Cheewangkoon, M.J. Wingf. & Crous, **sp. nov.** Figs. 5, 6
MycoBank MB516497.

Anamorph: "Cryptosporiopsis" eucalypti Sankaran & B. Sutton, Mycol. Res. 99: 828. 1995.

Maculae amphigenae, subcirculares ad irregulares, brunneae et atrobrunneae. *Ascomata* epigena immersa ad semiimmersa, intraepidermalia vel subepidermalia, subglobosa vel elliptica, coriacea, (90–)100–130(–170) μm lata, (120–)130–150(–190) μm alta, atrobrunnea ad nigra; ostiolum laterale, rostratum (50–)60–65(–70) μm latum, papillatum, usque ad 105 μm longum, periphysatum. *Peridium* 2–4 strata *texturae angularis* atrobrunneae compositum. *Asci* aparaphysati, unitunicati, octospori, apice rotundati, subcylindrici ad elongate obovoidei, annulo subapicali nonamyloideo, (60–)65–70(–80) \times (10–)11–13(–14) μm . *Ascospores* ellipsoideae, utrinque rotundatae, septo latissimae, hyalinae, in medio uniseptatae; (15–)17–19(–21) \times (5–)6(–7) μm ; maturitate appendicibus cylindricis terminalibus elongatis, 5.5–7 μm latis, (8–)15–20(–30) μm longis. *Conidiomata* brunnea ad atrobrunnea, acervularia ad pycnidialia, subglobosa ad late ovoidea, subcuticularia ad epidermalia, discreta, 2–4 strata *texturae angularis* medio brunneae composita, (170–)180–200(–230) μm lata, (150–)170–190(–220) μm alta. *Conidiophora* nulla. *Cellulae conidiogena*e enteroblasticaliter proliferantes, phialidis similes tunica periclinaliter incrassata colluloque, vel parte apicali percurrenter proliferantes, hyalinae, glabrae, cylindricae ad ampulliformes, rectae vel leniter curvatae, (6–) 8–12(–15) \times 2–4(–6) μm . *Conidia* holoblastica, hyalina, guttulata, glabra, cassitunicata, ellipsoidea, continua, apice obtuso, leniter curvata, basi hilo plano protrudente angustata, (15–)17–19(–23) \times (6.5–)7–8(–8.5) μm .

Etymology: Name refers to the fact that the fungus occurs on *Eucalyptus*.

Leaf spots amphigenous, subcircular to irregular, medium brown with blackish brown, reverse medium brown,

3–20 mm diam, surrounded by a purple-brown margin, which is dark brown in reverse. *Mycelium* immersed, consisting of smooth, septate, branched, medium brown, 2–3.5 μm wide hyphae. *Ascomata* epigenous immersed to semi-immersed, intra- or subepidermal, visible as minute ostiolar dots, depressed globose or elliptical, coriaceous, (90–)100–130(–170) μm wide, (120–)130–150(–190) μm high, dark brown to black; ostiole lateral, beaked, (50–)60–65(–70) μm wide, papillate, up to 105 μm long, periphysate; wall consisting of 2–4 layers of dark brown *textura angularis*. *Asci* aparaphysate, unitunicate, 8-spored, apically rounded, subcylindrical to long obovoid, sessile or subsessile in young asci, slightly curved, with non-amyloid subapical ring, (60–)

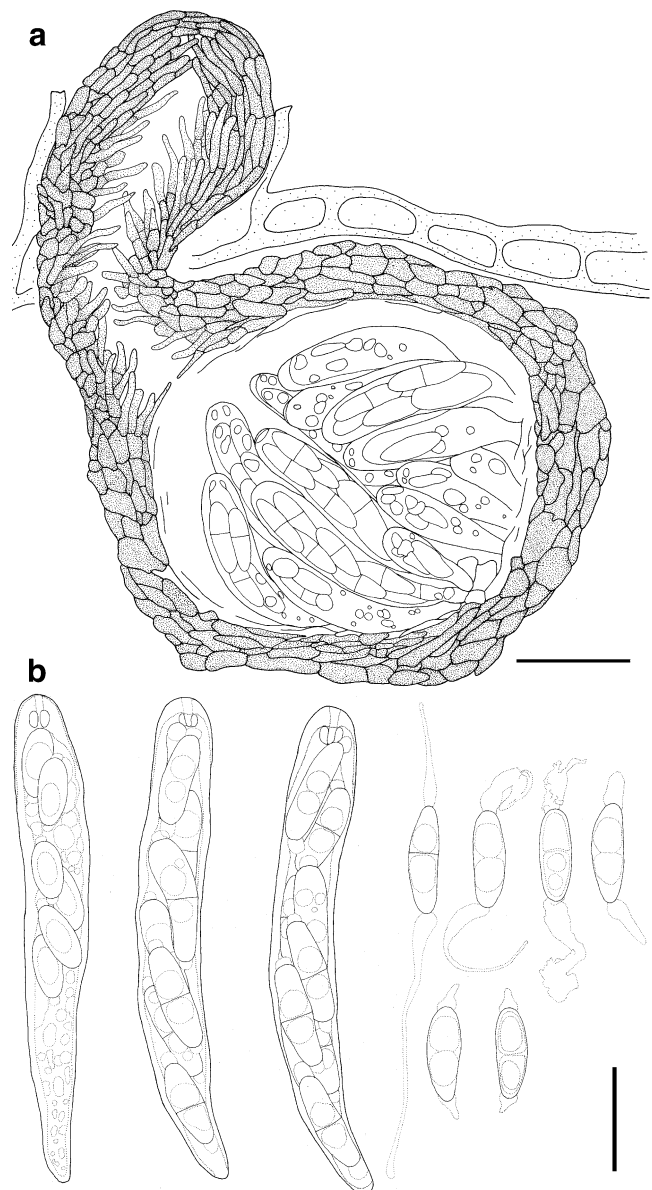


Fig. 6 Line drawing. *Pseudoplagiostoma eucalypti*. a. Cross section through ascoma. b. Asci; c. Ascospores. Scale bars: a=30 μm , b–c=15; c applies to b–c

65–70(–80)×(10–)11–13(–14) μm . *Ascospores* ellipsoid, tapering to rounded ends, widest at septum, hyaline, bi- to tri-seriate overlapping, fasciculate, medianly 1-euseptate; not constricted at the septum, with 1–2 large guttules in each cell, thin-walled, straight, (15–)17–19(–21)×(5–)6(–7) μm ; with hyaline, cylindrical appendages at both polar ends at maturity, expanded at the base, tapering towards the apex, 5.5–7 μm wide, (8–)15–20(–30) μm long. *Conidiomata*

medium to dark brown, acervular to pycnidial, with pale yellow drops of exuding conidia (at times forming a short cirrus); subglobose to broadly ovoid, subcuticular to epidermal, separate, consisting of 2–4 layers of medium brown *textura angularis*, (170–)180–200(–230) μm wide, (150–)170–190(–220) μm high; wall 15–20 μm thick, with central rupture, breaking through plant tissue, (50–)60–80(–100) μm wide. *Conidiophores* absent. *Conidiogenous cells* proliferat-

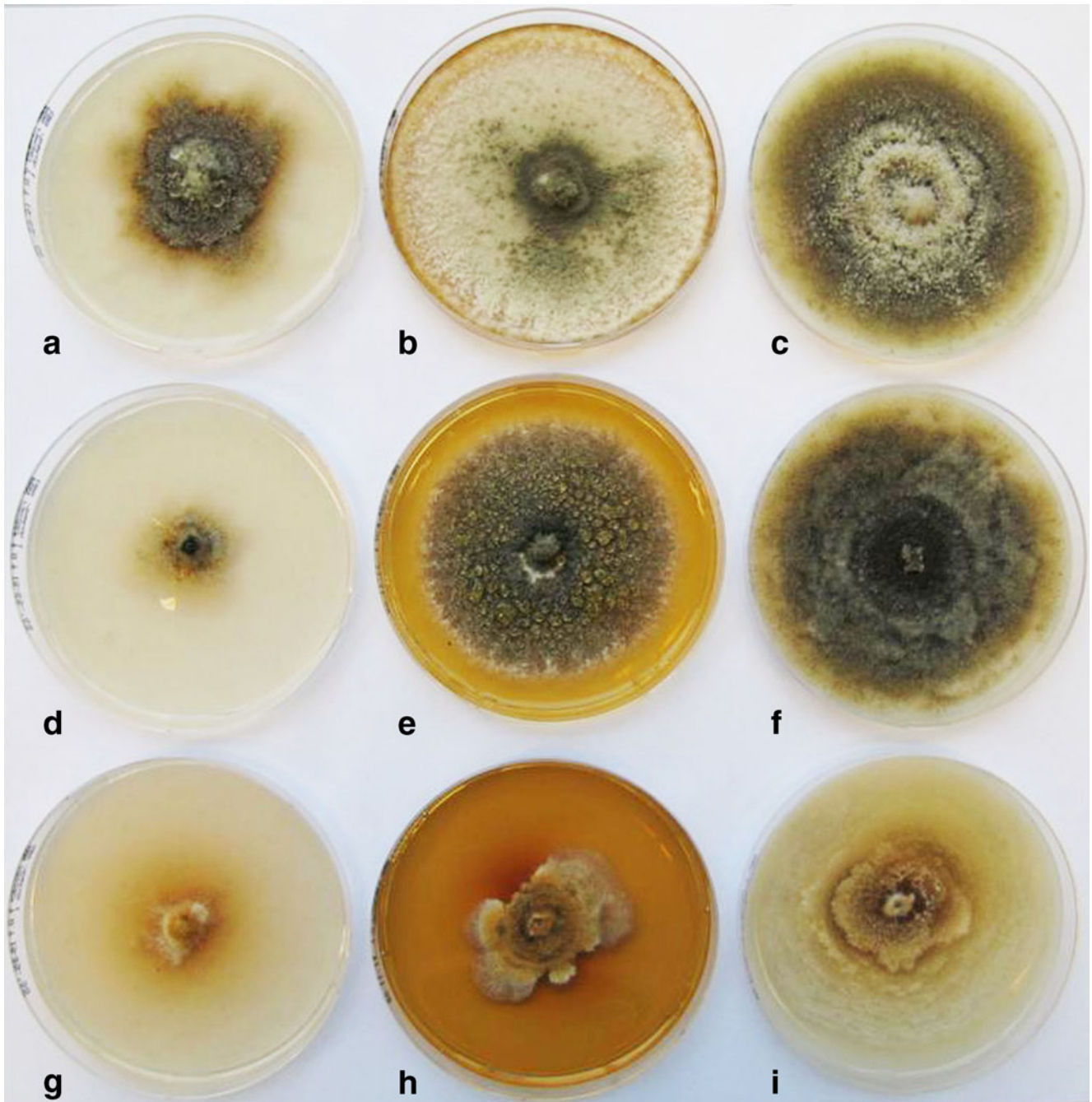


Fig. 7 *Pseudoplagiostoma* spp. in culture after 15 d. a–c. *Ps. eucalypti* (CBS 115788). a. On OA. b. On MEA. c. On PDA. d–f. *Ps. oldii* (CBS 124808). d. On OA. e. On MEA; f. On PDA. g–i. *Ps. variabile* (CBS 113067). g. On OA; h. On MEA; i. On PDA; g–i

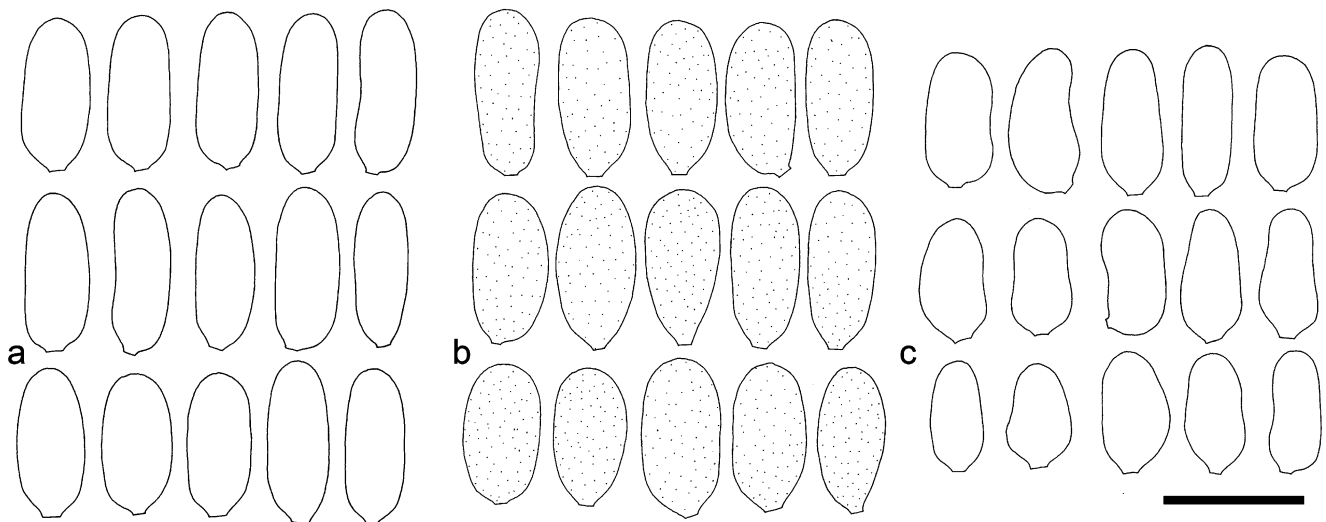


Fig. 8 Line drawing. Conidia of *Pseudoplagiostoma* spp. on MEA. a. *Ps. eucalypti*; b. *Ps. oldii*. c. *Ps. variabile*. Scale bar: =10 μm

ing enteroblastically, appearing as phialides with periclinal thickening and collarette, or with percurrent proliferation in the apical part; discrete, arising from the inner cell layer, hyaline, smooth, cylindrical to ampulliform, wider at the base, straight or slightly curved, (6–)8–12(–15) \times 2–4 (–6) μm . *Conidia* holoblastic, hyaline, guttulate, smooth, thick-walled, ellipsoid, aseptate, slightly curved, frequently slightly narrow at the middle, with obtuse apex; base tapering to flat protruding scar, (15–)17–19(–23) \times (6.5–)7–8 (–8.5) μm ; on MEA, (14–)16–19(–22) \times (6–)7–9(–11) μm .

Ascospore germination: Ascospores germinate from the apical cell, with primary germ tubes forming near the apex;

secondary germ tubes form later from the second cell, remaining hyaline; cell wall becoming slightly thicker, but not constricted at the septum, showing no distortion.

Culture characteristics: Characteristics on MEA, PDA and OA of all three species of *Pseudoplagiostoma* are compared in Table 2 and Figs. 7, 8.

Specimens examined: VENEZUELA, on living leaves of *Eucalyptus urophylla*, Oct. 2006, M.J. Wingfield, **holotype** of *Ps. eucalypti*, CBS H-20303, cultures ex-type CPC 13341=CBS 124807, CPC 13342, 13343. HAWAII, Kauai, on *Eucalyptus grandis*, 23 May 1978, C.S. Hodges, holotype of *Cryptosporiopsis eucalypti*, IMI 237416 f.

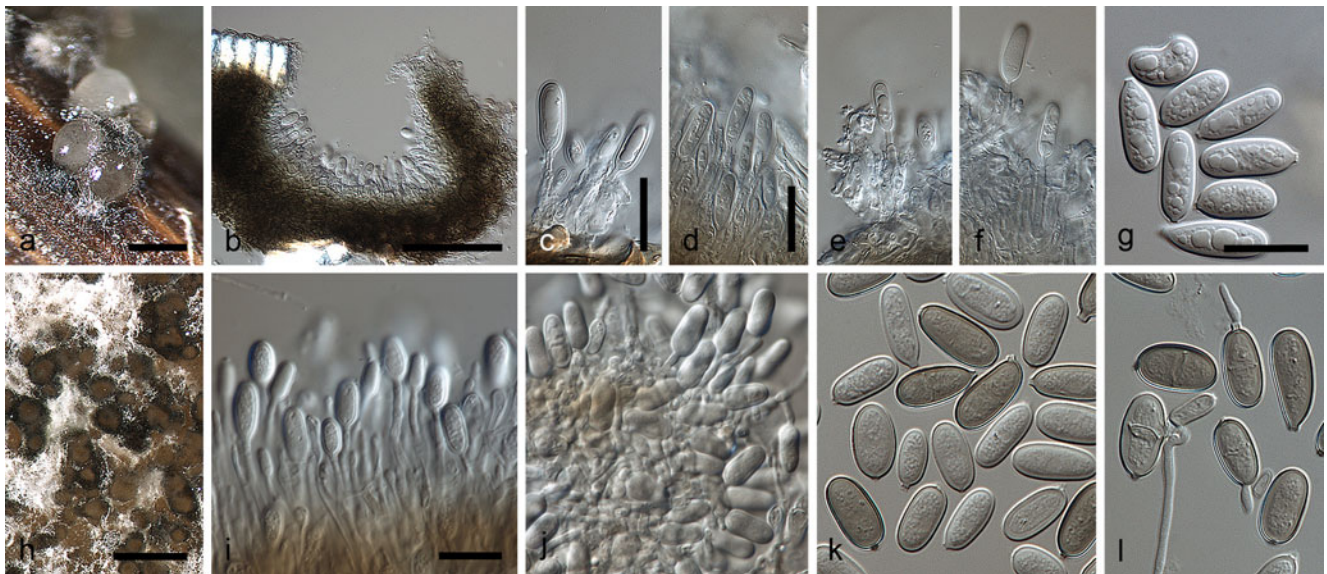


Fig. 9 *Pseudoplagiostoma oldii*. a. Conidiomata; b. Cross section through conidiomata; c–f. Conidia attached to conidiogenous cells with percurrent proliferation; g. Conidia; h. Conidiomata; i–j. Conidia and

conidiogenous cells; k. Conidia; l. Germinating conidia. a–g: on PNA. h–l: on MEA. Scale bars: a, h=800 μm , b=100 μm , c–g, k–l=20 μm , i–j=15 μm ; d applies to d–f; g applies to g, k–l; i applies to i–j

Pseudoplagiostoma oldii Cheewangkoon, M.J. Wingf. & Crous, **sp. nov.** Fig. 9

Mycobank MB 516498.

Etymology: Named for Australian forest pathologist, Dr Ken Old, who contributed substantially to an understanding of *Eucalyptus* diseases including the Cryptosporiosis disease complex.

Ascomata non vidimus. Species haec a *Ps. eucalypti* et *Ps. variabili* differt conidiomatibus (265–)285–300(–330) μm latis et (200–)220–250(–270) μm altis et conidiis maturitate brunneis in agar extracto malti, (15–)17–20(–23) \times (6–)7–8(–9) μm .

Leaf spots amphigenous, subcircular to irregular, medium brown. *Ascomata* not observed. On PNA dark brown conidiomata appeared after 15 d in the dark; conidiomata acervular to pycnidial, with pale grey masses of conidia, subglobose to broadly ovoid, subcuticular to epidermal, separate, consisting of 3–5 layers of dark brown *textura*

angularis, (265–)285–300(–330) μm wide, (200–)220–250(–270) μm high; central opening, (90–)110–120(–140) μm wide, wall 20–30 μm thick. *Conidiophores* absent. *Conidiogenous cells* discrete, phialidic with periclinal thickening, or 1–3 apical percurrent proliferations; cylindrical to ampulliform, arising from the inner cell layer, hyaline but at maturity brown on MEA, straight or slightly curved, wider at the base, smooth, (8.5–)15–20(–26) \times 2–3(–4.5) μm . *Conidia* holoblastic, hyaline, guttulate, smooth, thick-walled, ellipsoidal, aseptate, slightly curved, apex obtuse, base tapering to a flat, protruding scar, (15–)17–20(–23) \times (6–)7–8(–9) μm ; on MEA, (11–)14–17(–20) \times (6–)7–9(–11) μm .

Specimens examined: AUSTRALIA, Queensland, Lannercost, on *Eucalyptus camaldulensis*, 6 Jan. 2007, K. Old, **holotype** CBS H-20300, cultures ex-type CBS 124808=CMW 6675, CPC 14155; on *E. camaldulensis*, Jan. 2007, K. Old, CBS 115722.

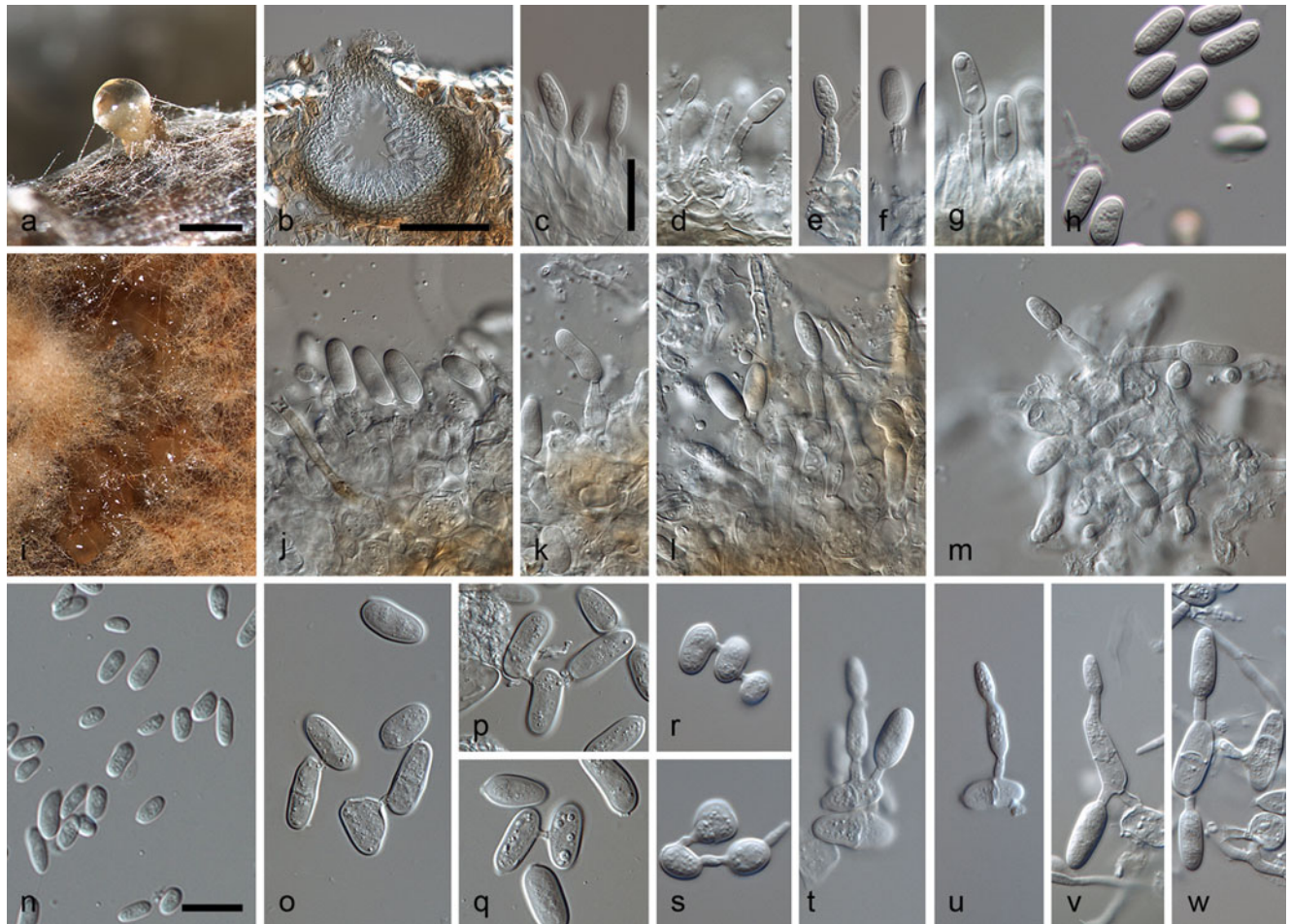


Fig. 10 *Pseudoplagiostoma variabile*. a. Conidiomata; b. Cross section through conidiomata; c–g. Conidia attached to conidiogenous cells with percurrent proliferation; h. Conidia; i. Conidiomata; j–m. Conidia and conidiogenous cells; n. Conidia; o–s.

Conidial anastomosis; t–w. Microcyclic conidiation. a–h: on PNA. i–w: on MEA. Scale bars: a=800 μm , b=100 μm , c–w=20 μm , c applies to c–m, o–w

Pseudoplagiostoma variabile Cheewangkoon, M.J. Wingf. & Crous, **sp. nov.** Fig. 10

Mycobank MB516499.

Etymology: Name reflects the variable conidial shape in this fungus.

Ascomata non vidimus. Species haec a *Ps. eucalypti* et *Ps. oldii* differt conidiomatibus (145–)170–190(–245) μm latis et (130–)160–180(–230) μm altis, et conidiis unitunicatis, (12.5–)15.5–17.5(–23.5) \times (5.5–)6.5–8(–9) μm .

Leaf spots amphigenous, subcircular to irregular, medium brown. **Ascomata** not observed. On PNA medium to dark brown pycnidial conidiomata appeared after 15 d of incubation in the dark, exuding pale yellow conidial masses; conidiomata subglobose to broadly ovoid, subcuticular to epidermal, separate, consisting of 2–4 layers of medium brown *textura angularis*, (145–)170–190(–245) μm wide, (130–)160–180(–230) μm high, apical ostiole central, (60–)70–90(–110) μm wide; wall 15–25 μm thick. **Conidiophores** absent. **Conidiogenous cells** discrete, phialidic with periclinal thickening, or 1–5 apical percurrent proliferations; cylindrical to ampulliform, arising from the inner cell wall, hyaline, straight or slightly curved, wider at the base, smooth, (12–)15–20(–23) \times 2–3(–4.5) μm . **Conidia** holoblastic, hyaline, guttulate, smooth, thin to slightly thick-walled, ellipsoid, aseptate, slightly curved, frequently constricted in the middle, apex obtuse, base tapering to flat protruding scar, (12.5–)15.5–17.5(–23.5) \times (5.5–)6.5–8(–9) μm ; on MEA, (6.5–)15.5–17(–19) \times (6.5–)7.5–9(–10.5) μm .

Specimen examined: URUGUAY, on *Eucalyptus globulus*, 5 Aug. 2002, M.J. Wingfield, **holotype** CBS H-20304, cultures ex-type CBS 113067=CPC 5320, CPC 5321.

Key to species of *Pseudoplagiostoma**

1. Conidia turn brown at maturity, (11–)14–17(–20) \times (6–)7–9(–11) μm , ratio (1.9–)2.3–2.5:1 (l:w) *Ps. oldii*
1. Conidia remain hyaline at maturity, ratio 2–2.1:1 (l:w) 2
2. Conidia ellipsoid, (14–)16–19(–22) \times (6–)7–9(–11) μm , ratio 2.1:1 (l:w) *Ps. eucalypti*
2. Conidia variable in shape, subglobose to bean-shaped, (6.5–)15.5–17(–19) \times (6.5–)7.5–9(–10.5) μm , ratio 2:1 (l:w) *Ps. variabile*

*Sporulating on MEA in culture.

Discussion

Results of this study have elucidated considerable confusion that has surrounded the taxonomy of one of the fungal

pathogens most commonly encountered on leaves of *Eucalyptus* in plantations globally. Phylogenetic inference of DNA sequence data thus showed that the fungus known as *Cryptosporiopsis eucalypti* and encountered in many treatments of *Eucalyptus* diseases (Sharma 1994; Sankaran et al. 1995; Old et al. 2002, 2003) is the anamorph of a member of the *Diaporthales* (99% bootstrap support), and not the *Dermateaceae* (*Helotiales*) along with *Cryptosporiopsis s. str.* The *Eucalyptus* pathogen that has been treated as *C. eucalypti* since 1995 has thus been placed in a novel genus as *Pseudoplagiostoma eucalypti*.

This study includes 39 isolates collected from *Eucalyptus* in plantations on four continents and from 10 countries. The combined sequence data sets for this collection of isolates delineate three distinct species within a monophyletic lineage. The major clade (*P. eucalypti*) includes 27 isolates, while the second clade (*P. oldii*) includes two isolates (CBS 124808 and CBS 115722) and the third clade (*P. variabile*) consists of a single isolate, CBS 113067. The monophyly of *Pseudoplagiostoma* is strongly supported by morphological characteristics. While all three species are very similar on OA, PDA, and PNA, they can easily be distinguished in culture on MEA. The conidial wall of *Ps. oldii* turns brown at maturity, suggesting that this feature can be used to distinguish them (also on PNA and OA, but not on PDA). Colonies of *Ps. variabile* grow more slowly than those of *Ps. eucalypti* and *Ps. oldii*. It produces fewer conidia on MEA, undergoes microcyclic conidiation, and its conidia are not uniform, ranging from subglobose to ellipsoid. These features should make this widely distributed group of fungi easy to identify in *Eucalyptus* disease surveys.

Within the *Diaporthales*, *Pseudoplagiostoma* is more similar to members of the *Gnomoniaceae* based on the morphological characters of its teleomorph, such as solitary, thin-walled, immersed ascomata with lateral beaks lacking stromata, asci with a distinct ring, and medianly 1-septate ascospores less than 25 μm long (Monod 1983; Barr 1978; Samuels and Blackwell 2001; Castlebury et al. 2002; Sogonov et al. 2008). In contrast, in the *Valsaceae* and *Sydowiellaceae*, stromatic and non-stromatic tissues are present (Wehmeyer 1975; Rossman et al. 2007). Also, in other families of *Diaporthales* such as *Cryphonectriaceae*, *Diaporthaceae*, *Melanconidaceae* and *Pseudovalsaceae*, the stromatic tissues are often well-developed (Castlebury et al. 2002; Gryzenhout et al. 2006; Voglmayr and Jaklitsch 2008). The coelomycetous anamorph of *Pseudoplagiostoma* (previously reported as *C. eucalypti*) also has acervular to pycnidial conidiomata without a well-developed stroma, phialidic and annellidic conidiogenous cells, and aseptate conidia, which are features typical of the *Diaporthales* (Rossman et al. 2007).

Pseudoplagiostoma is morphologically most similar to *Plagiostoma* in the *Gnomoniaceae*. It is, however, distinct from *Plagiostoma* and other members of the *Gnomiaceae* in having a truly lateral instead of a marginal neck, and distinct appendages at both ends of its ascospores. However, it shares some features with *Plagiostoma*, such as oblate perithecia with a single neck, but lacking a clypeus, and thin-walled asci with a conspicuous apical ring containing medianly 1-septate ascospores (Sogonov et al. 2008). *Pseudoplagiostoma* developed *Gnomoniaceae*-like morphological characters, which can be the result of convergent evolution. Phylogenetically, *Pseudoplagiostoma* is more closely related to families with well-developed stromatic tissue such as *Diaporthaceae* and *Pseudovalsaceae*; or families with stromatic and non-stromatic tissues such as *Valsaceae* and *Sydowiellaceae*. This indicates that the presence (or absence) of stromata and its development should not be over emphasised when distinguishing families within *Diaporthales*. Castlebury et al. (2002) also emphasised that stromatal development and thickness of the ascospore wall are of less importance than formerly suggested by Barr (1987, 1990).

Phylogenetic analysis based on LSU sequences indicated that *Pseudoplagiostoma* does not reside with *Plagiostoma* or any genus in the *Gnomoniaceae*, but represents a distinct clade in the *Diaporthales*. The genus *Pseudoplagiostoma* contains teleomorphic fungi with horizontal, dark, soft-textured perithecial ascomata lacking stromatic tissues, but with a lateral ostiolar neck; distinct non-amyloid asci with a refractive apical ring; eight medianly 1-septate ascospores, which have elongated appendages at both ends, but lacking true paraphyses. A new family, *Pseudoplagiostomaceae*, is thus described to accommodate *Pseudoplagiostoma* in the *Diaporthales*.

Anamorphs of *Diaporthales* are generally coelomycetous, producing phialidic, often annellidic conidiogenous cells, and usually have aseptate conidia in acervular or pycnidial conidiomata, with or without a well-developed stroma (Rossman et al. 2007). *Cryptonectriaceae*, *Diaporthaceae*, *Gnomoniaceae*, *Schizoparmeaceae* and *Valsaceae* anamorphs produce phialides, while only *Melanconidaceae* and *Pseudovalsaceae* produce annellidic conidiogenous cells. *Sydowiellaceae* includes taxa with both phialidic and annellidic conidiogenous cells. According to the descriptions by Verkley (1999), *Cryptosporiopsis* species generally have acervular or eustromatic conidiomata. Their conidiogenous cells are determinate and phialidic, with no proliferation or formation of consecutive conidia at progressive levels. These leave a series of scars on the cell apex, with periclinal thickening often seen *in vitro*. *Pseudoplagiostoma* anamorphs are difficult to distinguish morphologically from *Cryptosporiopsis* s. str. based on this widely-used generic concept. In this study, the three species

of *Pseudoplagiostoma* produced conidiogenous cells that proliferated percurrently, with conidia seceding at the same level or higher, and lacking the swollen structure observed below the conidiogenous loci seen in *Cryptosporiopsis* anamorphs linked to *Pezicula* (Verkley 1999). This difference in conidiogenesis could, therefore, be used to distinguish anamorphs of *Pseudoplagiostoma* from other similar coelomycetous genera in the *Diaporthales*, and from those in the *Helotiales*.

Moreover, based on LSU and ITS sequence data, three species of *Cryptosporiopsis* (*C. californiae*, *C. caliginosa* and *Cryptosporiopsis* sp.) clustered with other members of *Pezicula* and *Cryptosporiopsis* within the *Dermateaceae* (*Helotiales*). Thus far, only one true other *Cryptosporiopsis* species (*C. edgertonii*) has been reported from *Eucalyptus* samples in New Zealand (Gadgil 2005), which has much larger conidia (30–48×12–15 µm; Edgerton 1908) than these taxa.

Phenotypic plasticity remains a major factor leading to taxonomic uncertainty in the classification and identification of diaporthalean fungi. Castlebury et al. (2002) noted that the delimitation of diaporthalean families varied considerably among specialists, and that their morphological characters could easily lead to confusion for non-specialists. Nine diaporthalean families were previously established based on phylogenetic analysis, because it highlighted the specific differences observed among species at molecular level (Rossman et al. 2007).

For *Pseudoplagiostomaceae*, we found that certain morphological characters are more valuable for species distinction, such as conidia, conidiogenous cells and conidiomata of anamorphs. However, only the ascomatal neck and asci-forming positions could be used to distinguish these teleomorphs from those in other families. It should be noted though, that the phylogeny of the *Diaporthales* is still not fully resolved (Castlebury et al. 2002). The addition of new taxa and description of potential new genera may result in changes in relative relatedness between families. This may also indicate differences in the importance of certain morphological characteristics to delineate families.

This study has resolved the taxonomy of one of the most commonly encountered fungi emerging from *Eucalyptus* disease surveys. The results will contribute substantially to a better understanding of these fungi and their role in *Eucalyptus* leaf diseases in many different parts of the world. A priority at this stage will be to compare the pathogenicity of the three new species of *Pseudoplagiostoma* that have previously been treated as the single species, *C. eucalypti*. The temptation to assume that they are all pathogens should be avoided until Koch's postulates have been proven. Furthermore, it would be useful to have information regarding the pathogenicity of *Cryptosporiopsis* spp. (*C. californiae*, *C. caliginosa* and *Cryptosporiopsis*

sp.) which have never been experimentally shown to be pathogens of *Eucalyptus*.

Acknowledgement We are grateful to many friends and colleagues associated with forestry companies in various parts of the world who have made it possible for us to collect specimens that made this study possible. The first author gratefully acknowledges Chiang Mai University Graduate School for partial support to this doctoral study.

Open Access This article is distributed under the terms of the Creative Commons Attribution Noncommercial License which permits any noncommercial use, distribution, and reproduction in any medium, provided the original author(s) and source are credited.

References

- Barr ME (1978) The *Diaporthales* in North America with emphasis on *Gnomonia* and its segregates. *Mycologia Memoir* 7:1–232
- Barr ME (1990) Prodromus to nonlichenised, pyrenomycetous members of class hymenoascomycetes. *Mycotaxon* 39:43–184
- Castlebury LA, Rossman AY, Jaklitsch WJ, Vasilyeva LN (2002) A preliminary overview of the *Diaporthales* based on large subunit nuclear ribosomal DNA sequences. *Mycologia* 94:1017–1031
- Cheewangkoon R, Crous PW, Hyde KD, Groenewald JZ, To-anan C (2008) Species of *Mycosphaerella* and related anamorphs on *Eucalyptus* leaves from Thailand. *Persoonia* 21:77–91
- Cheewangkoon R, Groenewald JZ, Summerell BA, Hyde KD, To-anan C, Crous PW (2009) Myrtaceae, a cache of fungal biodiversity. *Persoonia* 23:55–85
- Ciesla WM, Diekmann M, Putter CAJ (eds.) (1996) FAO/IPGRI Technical guidelines for the safe movement of germplasm, No. 17. *Eucalyptus* spp. FAO, IPGRI, ACIAR & ASEAN, Rome, Italy
- Crous PW (1998) *Mycosphaerella* spp. and their anamorphs associated with leaf spot diseases of *Eucalyptus*. *Mycol Mem* 21:1–170
- Crous PW (2002) Taxonomy and pathology of *Cylindrocladium* (*Calonectria*) and allied genera. APS Press.
- Crous PW (2009) Taxonomy and phylogeny of the genus *Mycosphaerella* and its anamorphs. *Fungal Div* 38:1–24
- Crous PW, Wingfield MJ, Park RF (1991) *Mycosphaerella nubilosa* a synonym of *M. molleriana*. *Mycol Res* 95:628–632
- Crous PW, Gams W, Stalpers JA, Robert V, Stegehuis G (2004a) MycoBank: an online initiative to launch mycology into the 21st century. *Stud Mycol* 50:19–22
- Crous PW, Groenewald JZ, Risède J-M, Simoneau P, Hywel-Jones NL (2004b) *Calonectria* species and their *Cylindrocladium* anamorphs: species with sphaeropedunculate vesicles. *Stud Mycol* 50:415–430
- Crous PW, Groenewald JZ, Risède JM, Simoneau P, Hyde KD (2006a) *Calonectria* species and their *Cylindrocladium* anamorphs: species with clavate vesicles. *Stud Mycol* 55:213–226
- Crous PW, Slippers B, Wingfield MJ, Rheeder J, Marasas WFO, Philips AJL, Alves A, Burgess T, Barber P, Groenewald JZ (2006b) Phylogenetic lineages in the *Botryosphaeriaceae*. *Stud Mycol* 55:235–253
- Crous PW, Verkley GJM, Groenewald JZ, Samson RA (eds.) (2009) Fungal biodiversity. CBS laboratory manual series. Centraal bureau voor Schimmelcultures, Utrecht, Netherlands
- Edgerton CW (1908) Two little known *Myxosporiums*. *Ann Mycol* 6 (1):48–53
- Ferreira FA, Silveira SF, Alfenas AC, Demuner AM (1998) Mancha-de-criptoriopsis em eucalipto no Brasil. *Fitopatol Bras* 23:414
- Gadgil PD (2005) Fungi on trees and shrubs in New Zealand. *Fungi of New Zealand volume 4. Fungal Divers Res Ser* 16:1–437
- Gadgil PD, Dick M (1999) *Fungi Silvicolae Novaezelandiae: 2*. *New Zeal J For Sci* 29:440–458
- Glass NL, Donaldson GC (1995) Development of primer sets designed for use with the PCR to amplify conserved genes from filamentous ascomycetes. *Appl Environ Microbiol* 61:1323–1330
- Gryzenhout M, Myburg H, Wingfield BD, Wingfield MJ (2006) *Cryphonectriaceae* (*Diaporthales*), a new family including *Cryphonectria*, *Chrysosporthe*, *Endothia* and allied genera. *Mycologia* 98:239–249
- de Hoog GS, Gerrits van den Ende AHG (1998) Molecular diagnostics of clinical strains of filamentous basidiomycetes. *Mycoses* 41:183–189
- Lombard L, Rodas CA, Crous PW, Wingfield BD, Wingfield MJ (2009) *Calonectria* (*Cylindrocladium*) species associated with dying *Pinus* cuttings. *Persoonia* 23:41–47
- Lombard L, Zhou XD, Crous PW, Wingfield BD, Wingfield MJ (2010) *Calonectria* species associated with cutting rot of *Eucalyptus*. *Persoonia* 24:1–11
- Monod M (1983) Monographie taxonomique des *Gnomoniaceae* (del'ordre des *Diaporthales*). *Beihefte zur Sydowia* 9:1–315
- van Niekerk JM, Groenewald JZ, Verkley GJM, Fourie PH, Wingfield MJ, Crous PW (2004) Systematic reappraisal of *Coniella* and *Pilidiella*, with specific reference to species occurring on *Eucalyptus* and *Vitis* in South Africa. *Mycol Res* 108:283–303
- O'Donnell K, Cigelnik E (1997) Two divergent intragenomic rDNA ITS2 types within a monophyletic lineage of the fungus *Fusarium* are nonorthologous. *Mol Phylogenet Evol* 7:103–117
- Old KM, Yuan ZQ (1994) Foliar and stem diseases of *Eucalyptus* in Vietnam and Thailand. Report of study visits. CSIRO Division of Forestry, Canberra
- Old KM, Yuan ZQ (1999) Foliar and stem diseases of *Eucalyptus* in Vietnam and Thailand. Report prepared for CSIRO Division of Forestry and Australian Centre for International Agriculture Research, Canberra
- Old KM, Dudzinski MJ, Pongpanich K, Yuan ZQ, Thu PQ, Nguyen NT (2002) *Cryptosporiopsis* leaf spot and shoot blight of eucalypts. *Austral Plant Pathol* 31:337–344
- Old KM, Wingfield MJ, Yuan ZQ (2003) *Cryptosporiopsis* leaf blight. A manual of diseases of *Eucalyptus* in South-East Asia. CIFOR and ACIAR, Bogor, Indonesia, pp 10–13
- Park RF, Keane PJ, Wingfield MJ, Crous PW (2000) Fungal diseases of eucalypt foliage. In: Keane PJ, Kile GA, Podger FD, Brown BN (eds) *Diseases and pathogens of eucalypts*. CSIRO publishing, Australia, pp 153–239
- Rayner RW (1970) A mycological colour chart. CMI and British Mycological Society, Kew
- Rehner SA, Samuels GJ (1994) Taxonomy and phylogeny of *Gliocladium* analysed from nuclear large subunit ribosomal DNA sequences. *Mycol Res* 98:625–634
- Rossmann AY, Farr DF, Castlebury LA (2007) A review of the phylogeny and biology of the *Diaporthales*. *Mycoscience* 48:135–144
- Samuels GJ, Blackwell M (2001) Pyrenomyces—fungi with perithecia. In: McLaughlin D, McLaughlin E (eds) *The Mycota*

- VII Part A. Systematics and evolution. Springer-Verlag, Berlin, pp 221–255
- Sankaran KV, Sutton BC, Balasundaran M (1995) *Cryptosporiopsis eucalypti* sp.nov., causing leaf spots of eucalypts in Australia, India and U.S.A. Mycol Res 99:827–830
- Sharma JK (1994) Pathological Investigation in Forest Nurseries and Plantations in Vietnam. Report of UNDP/FAO Project VIE/92/022, Hanoi
- Sogonov MV, Castlebury LA, Rossman AY, Mejia LC, White JF (2008) Leaf-inhabiting genera of the *Gnomoniaceae*, *Diaporthales*. Stud Mycol 62:1–79
- Sutton BC (1980) The coelomycetes. Fungi imperfecti with pycnidia, acervuli and stromata. Commonwealth Mycological Institute, Kew
- Verkley GJM (1999) A monograph of the genus *Pezicula* and its anamorphs. Stud Mycol 44:1–180
- Vilgalys R, Hester M (1990) Rapid genetic identification and mapping of enzymatically amplified ribosomal DNA from several *Cryptococcus* species. J Bacteriol 172:4238–4246
- Voglmayr H, Jaklitsch WM (2008) *Prostheciium* species with *Stegosporium* anamorphs on *Acer*. Mycol Res 112:885–905
- Wehmeyer LE (1975) The pyrenomycetous fungi. Mycol Mem 6:1–250
- White TJ, Bruns T, Lee J, Taylor J (1990) Amplification and direct sequencing of fungal ribosomal RNA genes for phylogenetics. In: Innis MA, Gelfand DH, Sninsky JJ, White TJ (eds) PCR protocols: a guide to methods and applications. Academic, San Diego, pp 315–322