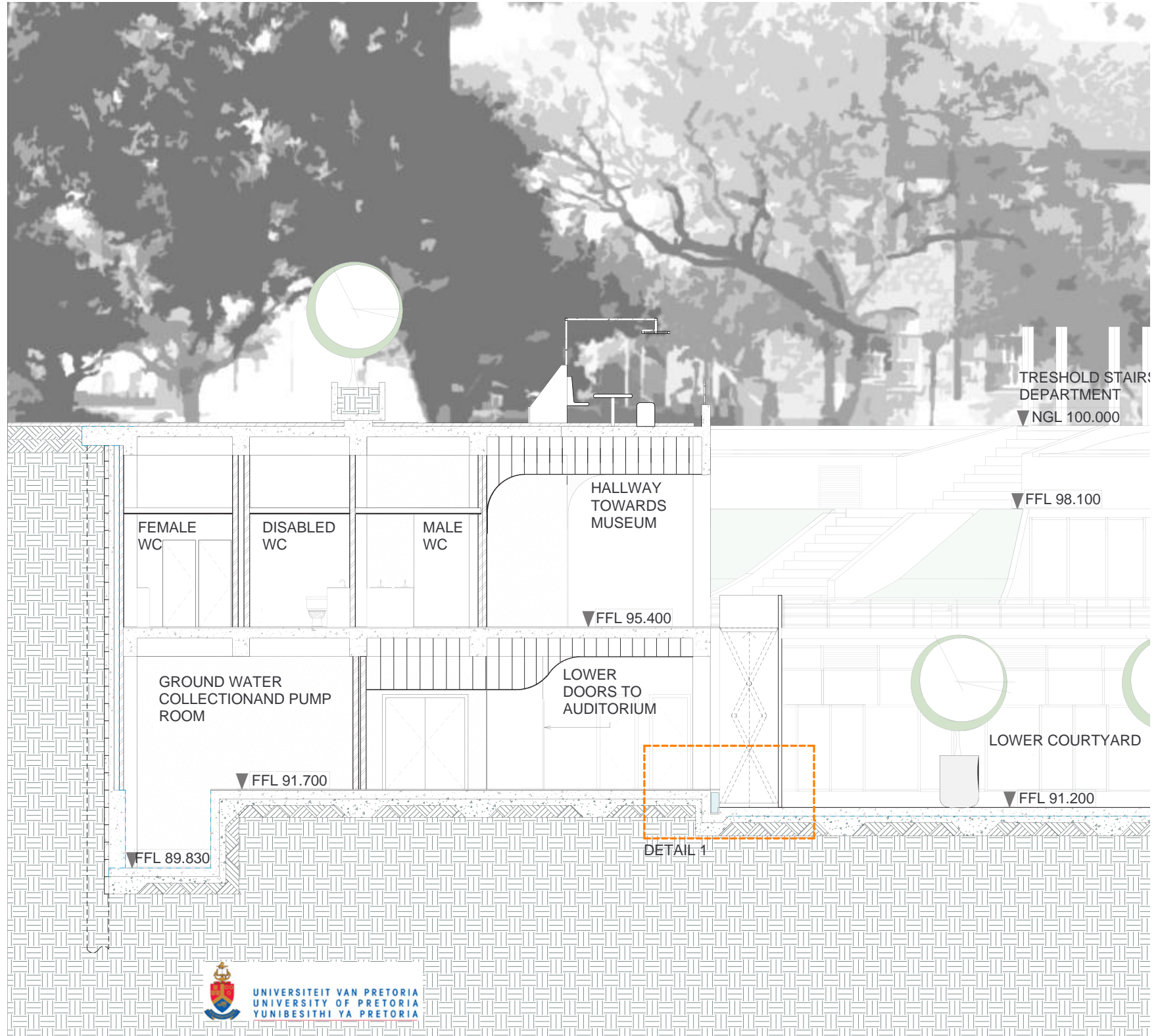


Section 3 - 3
1 : 100





S TO

STAFF ROOM

▼ FFL 98.900

HALLWAY CONNECTING OFFICES AND LIBRARY

OFFICE

▼ FFL 95.400

HALLWAY CONNECTING OFFICES AND CLASS-ROOMS

OFFICE

▼ FFL 97.700

DETAIL 4



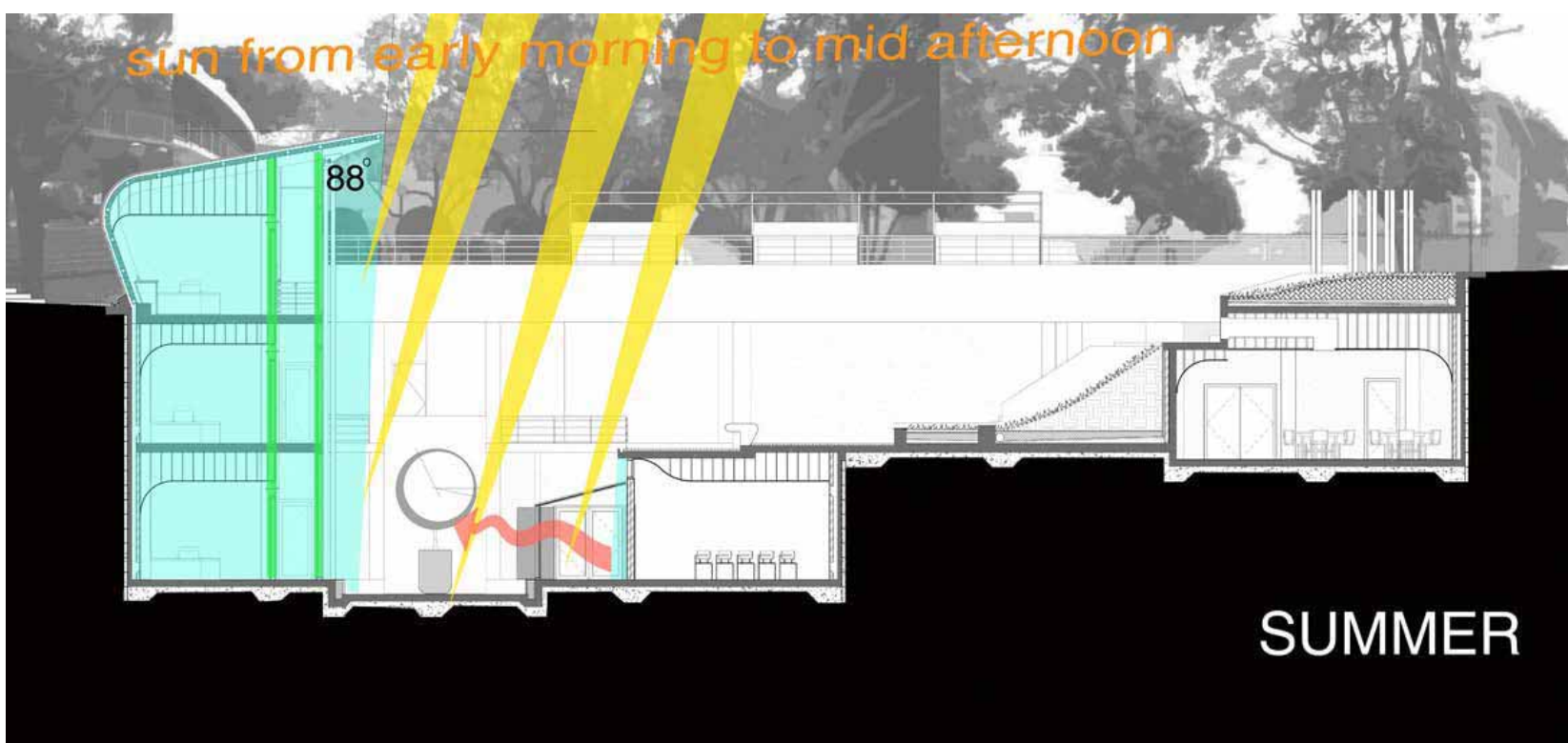
UNIVERSITEIT VAN PRETORIA
UNIVERSITY OF PRETORIA
YUNIBESITHI YA PRETORIA

Fig.128

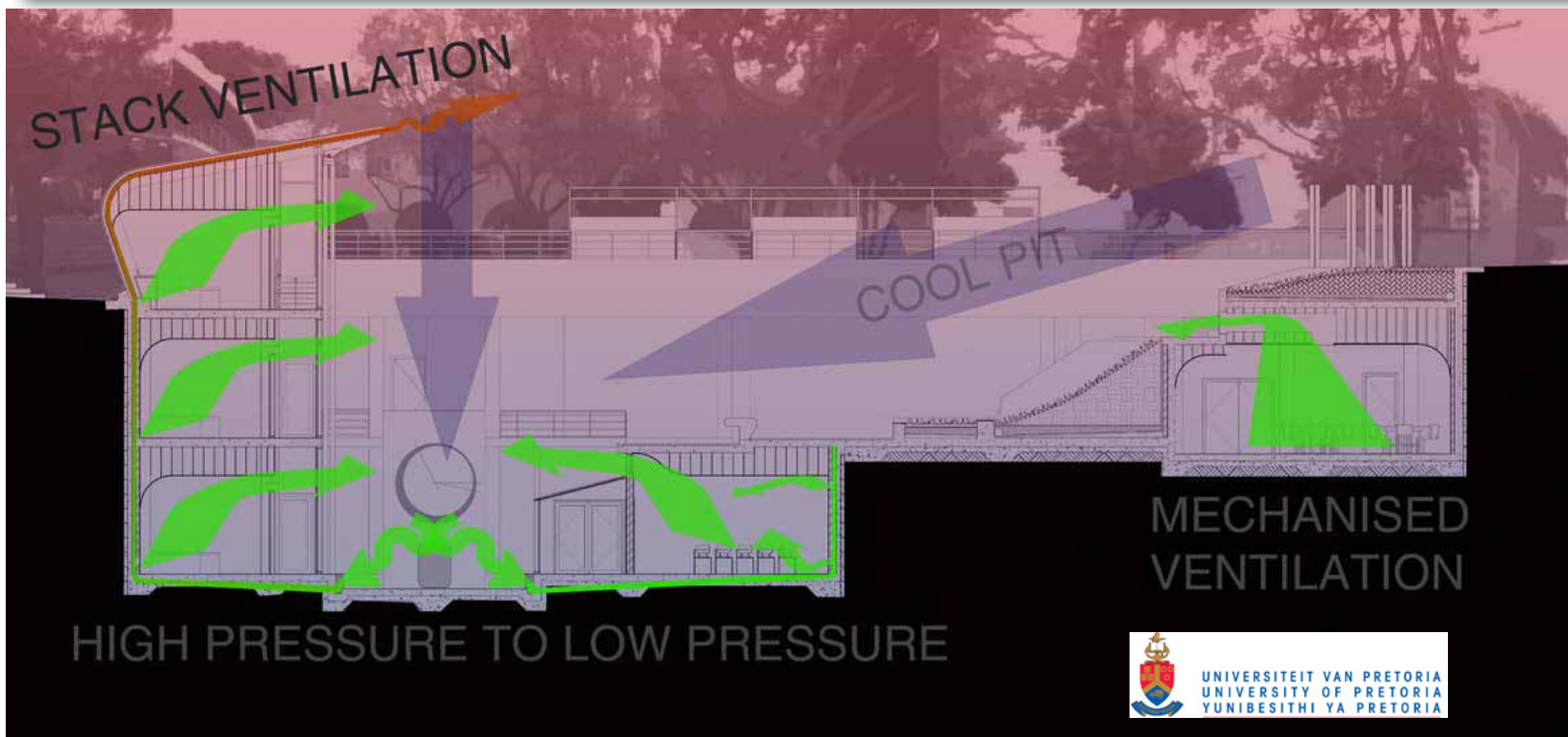


Winter incidents and heating
 Fig.129



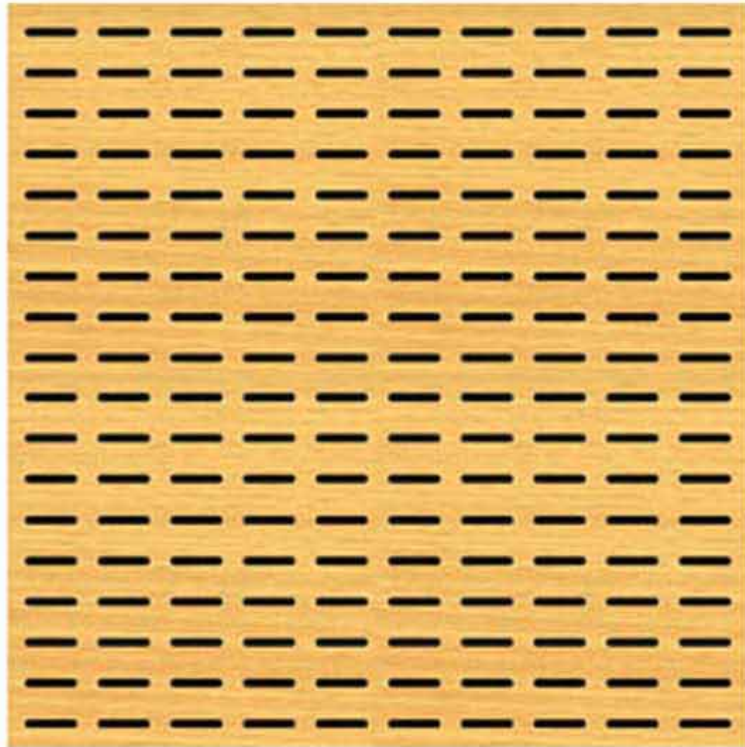


Summer incidents and cooling
 Fig.131

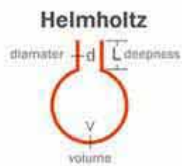
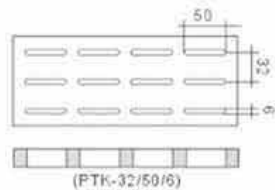


SlotPanel system by Geetai

The panels are veneered with natural Red Cherry finish and will be installed in the 600 x 600 x 18mm size

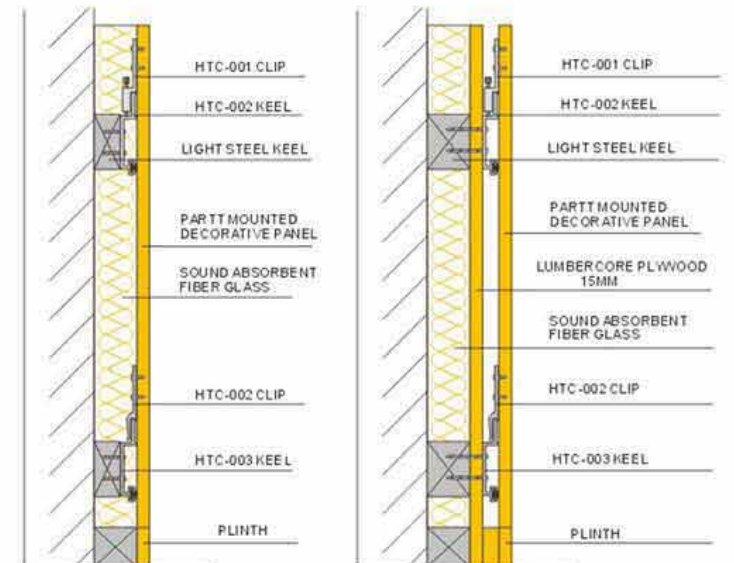
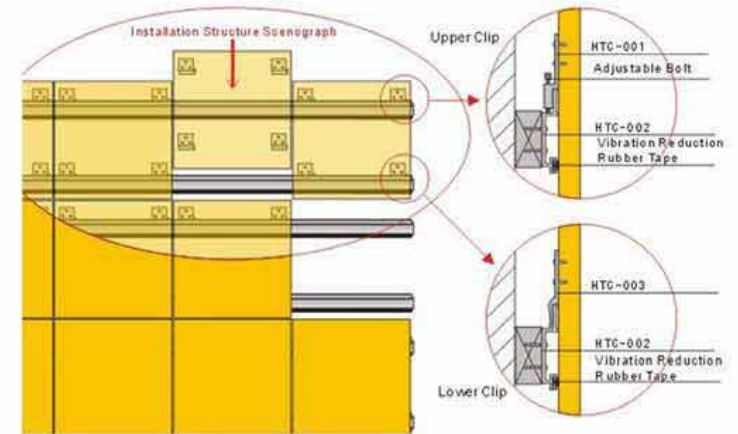
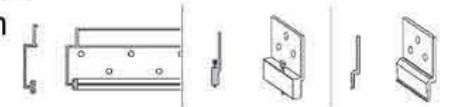


Acouloc felt is used in the cases where sound must be absorbed. It is glued to the back of the panels.



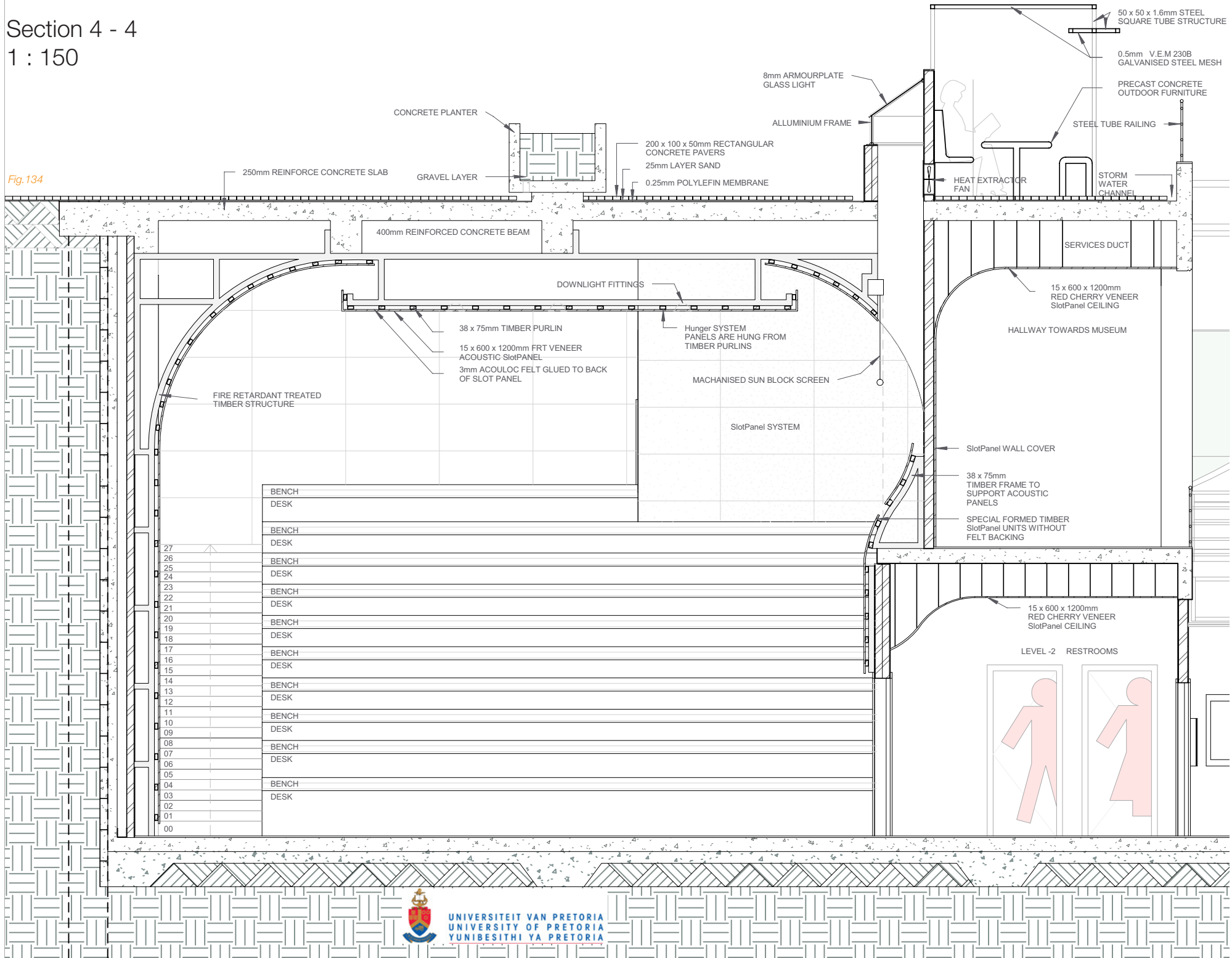
Profile of panel: based on Helmholtz diagram

Below is images and diagrams of how the panels are secured using the HungerTec system



Section 4 - 4
1 : 150

Fig.134





TablLift
DSL - 20 - 144
Max load 10 people
35 seconds to reach height of levels

Fig.135

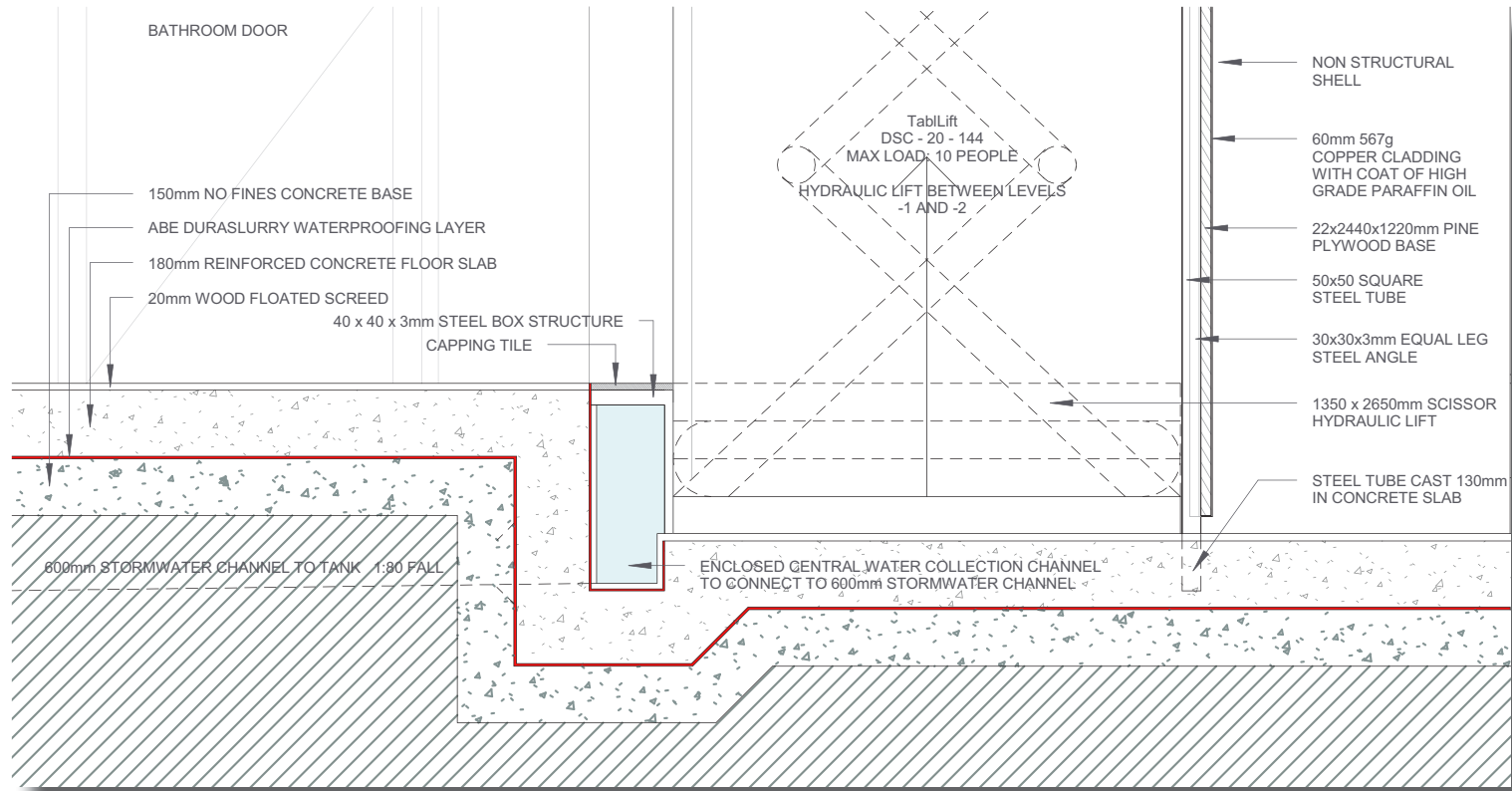
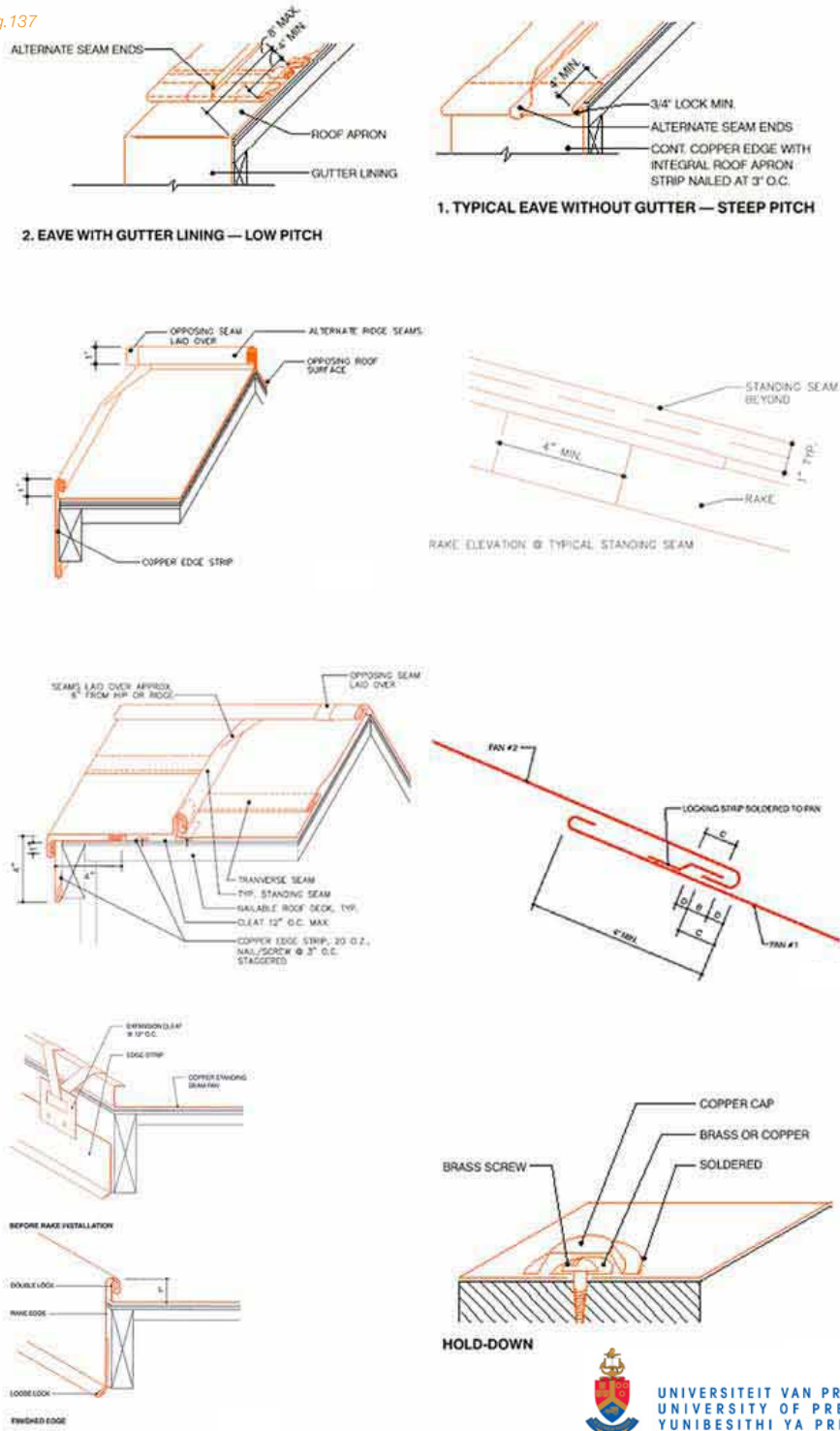


Fig.136

Detail 1
1 : 5

Fig.137



Copper roofing

60mm 567g copper sheets are used to cover the fire retardant treated plywood base. The sheets are finished with a high grade paraffin oil to slow the discolouring of the copper.

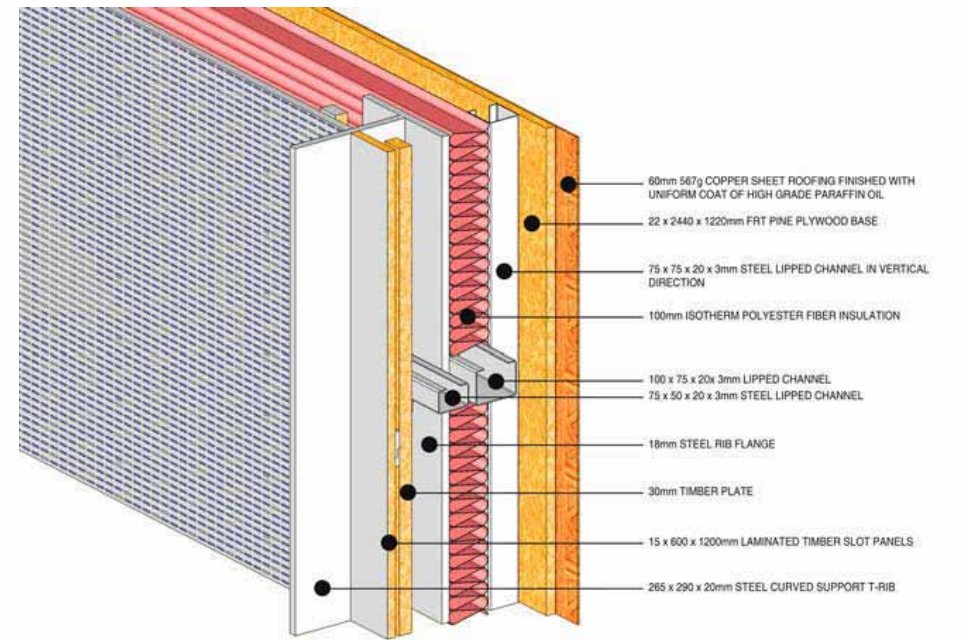
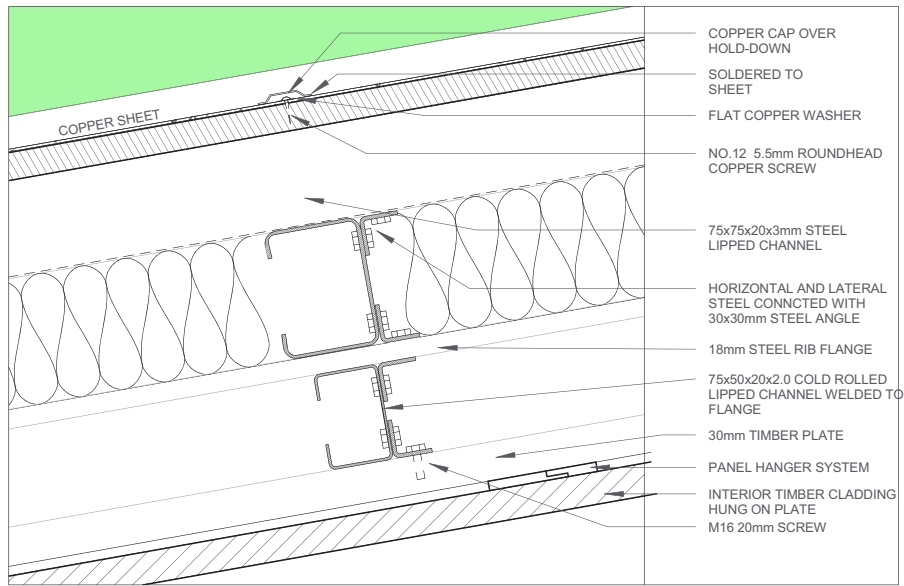


Fig.139



Detail 3
1 : 5

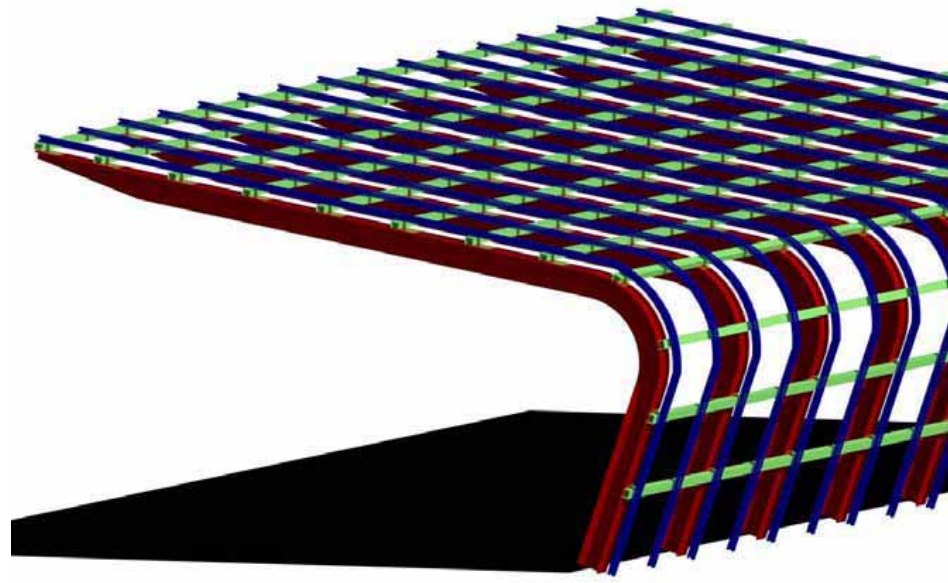


Fig.138

Fig.140

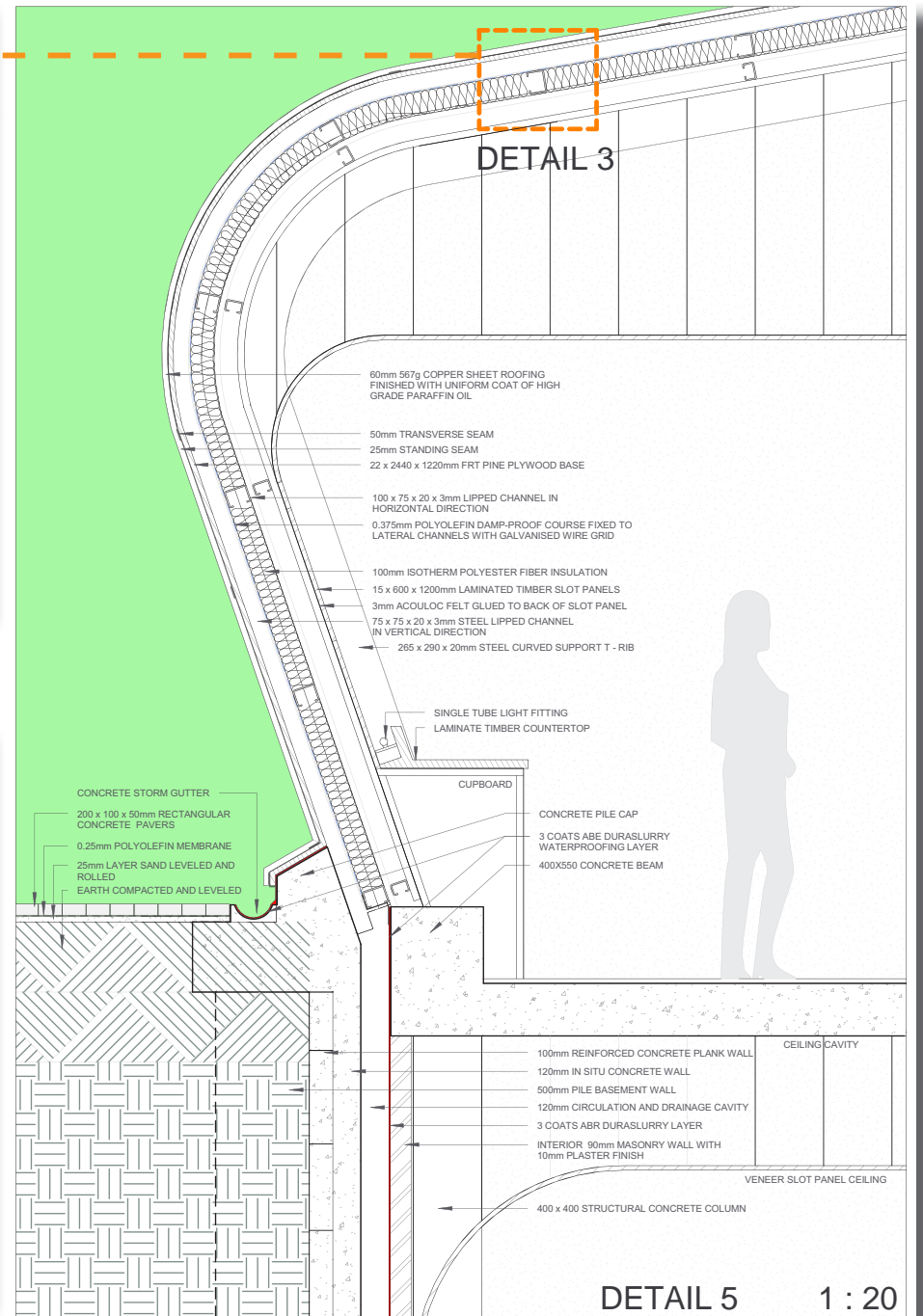
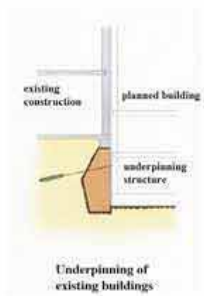
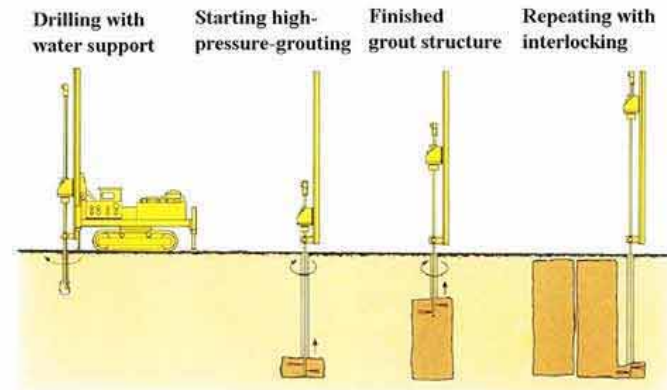


Fig.141



Execution of a jet grout body

A pipe is drilled into the soil by driller to a depth of 12m. From this depth it will start to saturate the soil with a concrete mix and this then causes the soil to solidify and harden.

In the image on the right is a diagram of how this system is used in cases of extreme proximity.

Jet Grouting

The ground between the new department and the Old Meresky is stabilized and secured by solidifying a layer of soil on the excavation edge. This will minimize vibration and soil movement between the old building and the construction site.

Detail 4
1 : 20

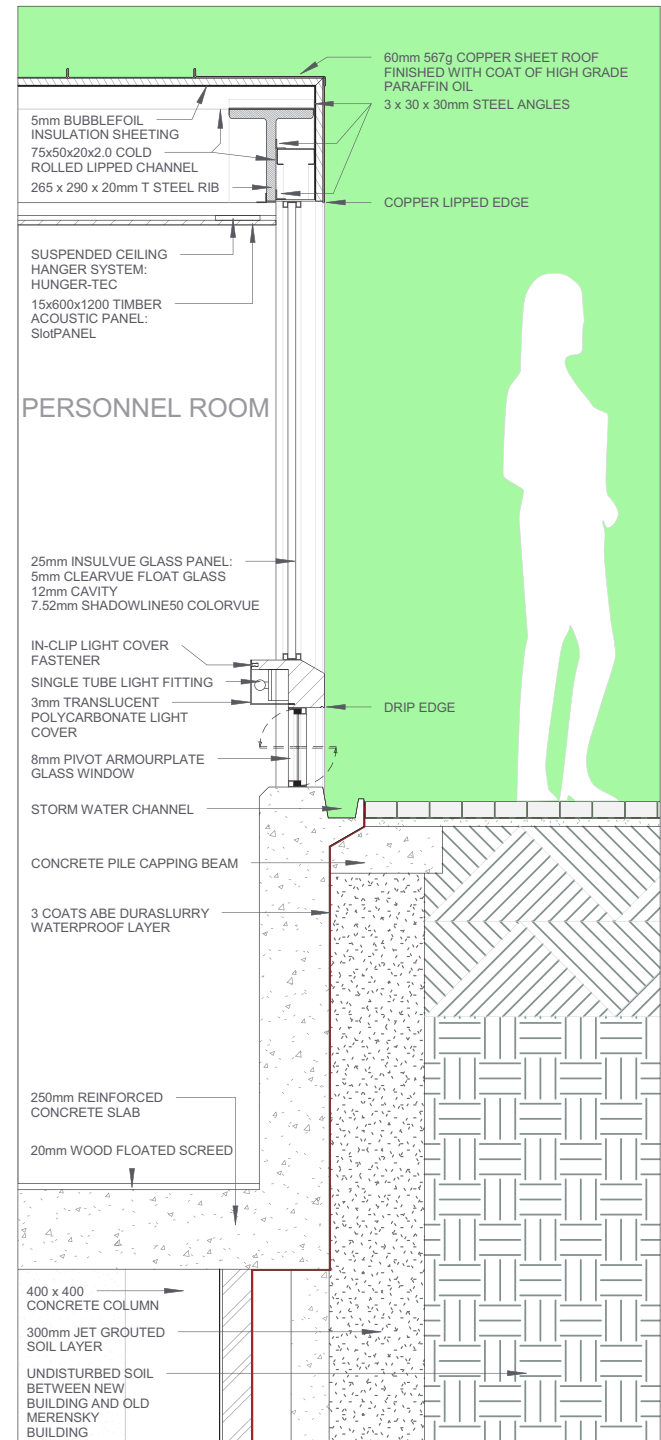
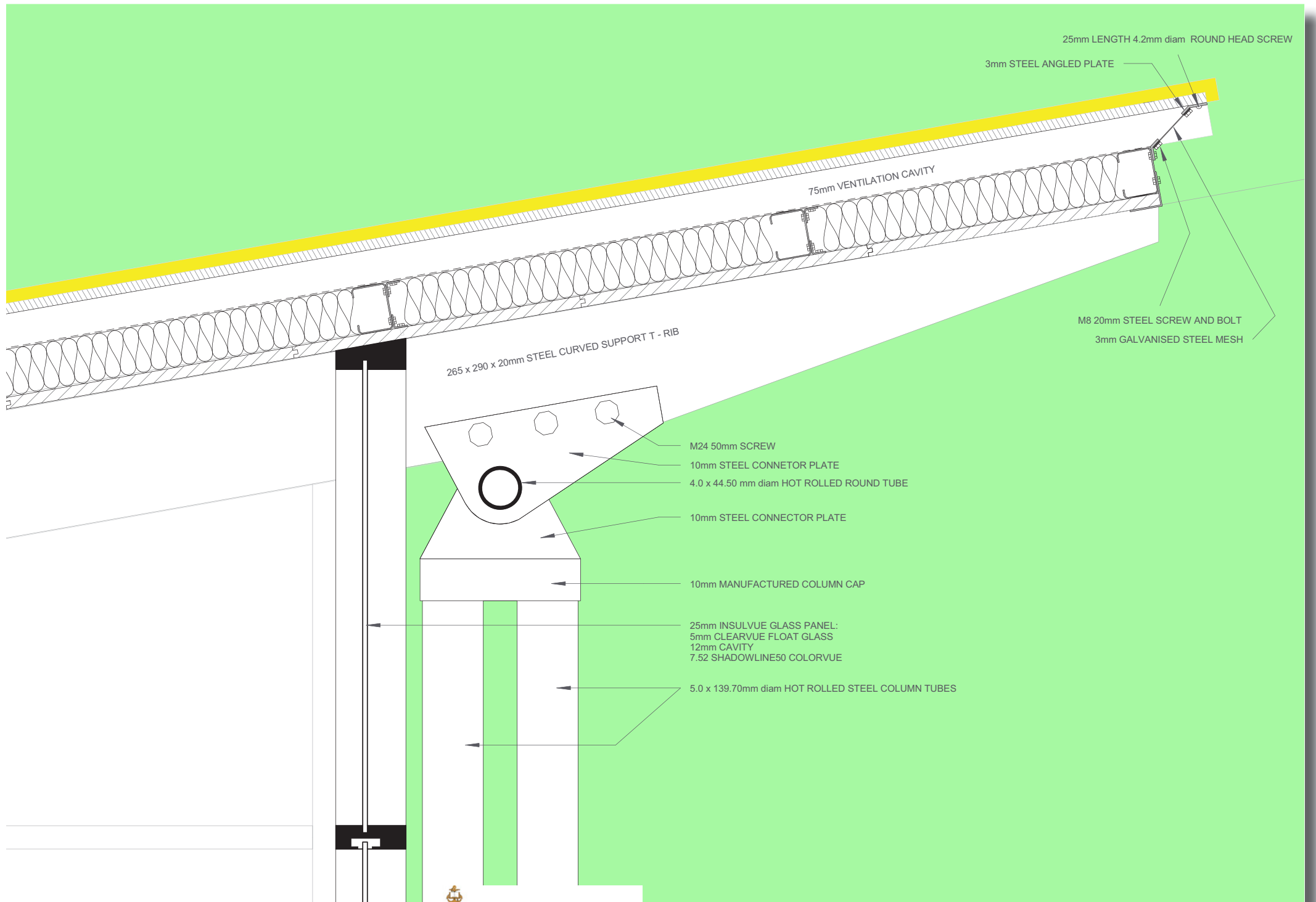


Fig.143



25mm LENGTH 4.2mm diam ROUND HEAD SCREW

3mm STEEL ANGLED PLATE

75mm VENTILATION CAVITY

M8 20mm STEEL SCREW AND BOLT
3mm GALVANISED STEEL MESH

265 x 290 x 20mm STEEL CURVED SUPPORT T - RIB

M24 50mm SCREW

10mm STEEL CONNETOR PLATE

4.0 x 44.50 mm diam HOT ROLLED ROUND TUBE

10mm STEEL CONNECTOR PLATE

10mm MANUFACTURED COLUMN CAP

25mm INSULVUE GLASS PANEL:
5mm CLEARVUE FLOAT GLASS
12mm CAVITY
7.52 SHADOWLINE50 COLORVUE

5.0 x 139.70mm diam HOT ROLLED STEEL COLUMN TUBES

Detail 2
1 : 20

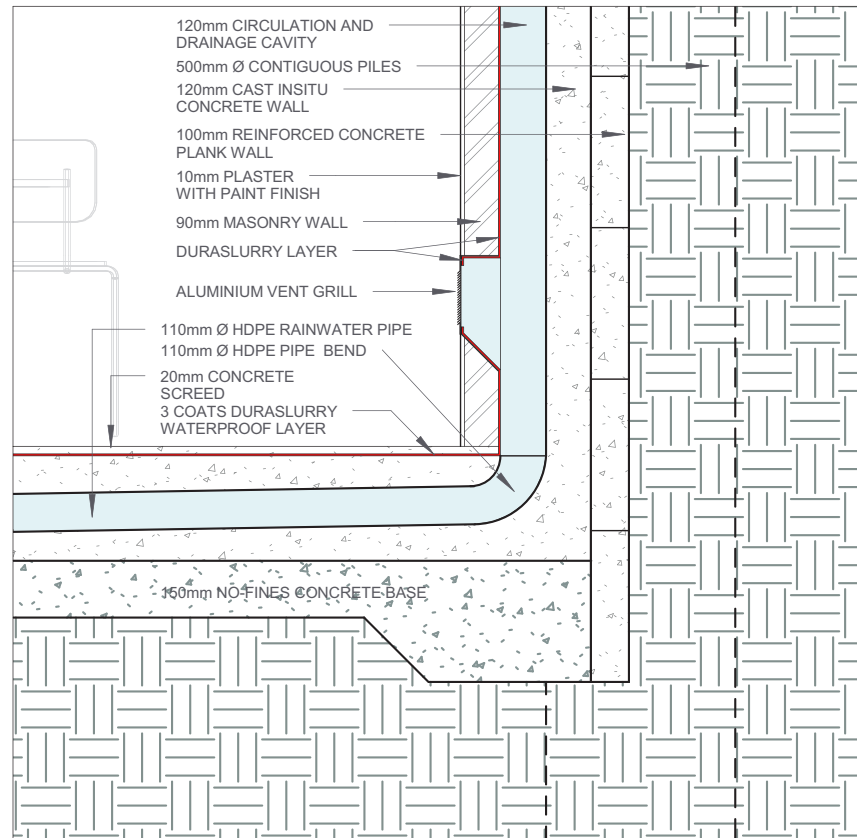


Fig.145