

FOLD UP HINGED SECURITY SCREEN

25mm gas spring assisted cantilevered canopy / shutter with stainless steel frame, with white polyester powder coated Specimesh steel mesh to inside and 4mm twin walled polycarbonate sheet outer layer with "tree" motif adhesive vinyl transfer.

90x90x3mm galvanised mild steel cold rolled square tubes welded to form structural frame, corner columns bolted to station floor through square base plate with 4 no. anchor bolts. Steel to be primed and painted dark grey. Holes for infill and roof masts to be pre-drilled.

STRUCTURAL STEEL FRAME

STORAGE / SERVICE COUNTER

Okoume wood veneer storage and service counter with counter top in "Primary Green" Formica laminate with lightbox for signage to front in 4mm cast acrylic with adhesive vinyl decorative transfer for tenant signage (solid lettering, plastic, stainless steel or vinyl). 2 no. double sockets under counter with cable outlet in work top.

GLAZING

12mm laminated safety glazing to comply with SANS 50572 as relates to human contact, fixed in stainless steel profile frame through fixed with M7 hexagon bolts with suitable rubber washer at 560mm centres vertically and 610mm centres horizontally

FLOOR FINISH

18mm thick oriented strand board (OSB) floor finish painted one layer white floor paint to allow retention of OSB surface texture, fixed to steel substructure with self tapping screw, holes in OSB to be filled with wood filler and leveled prior to painting

STORAGE / COUNTER

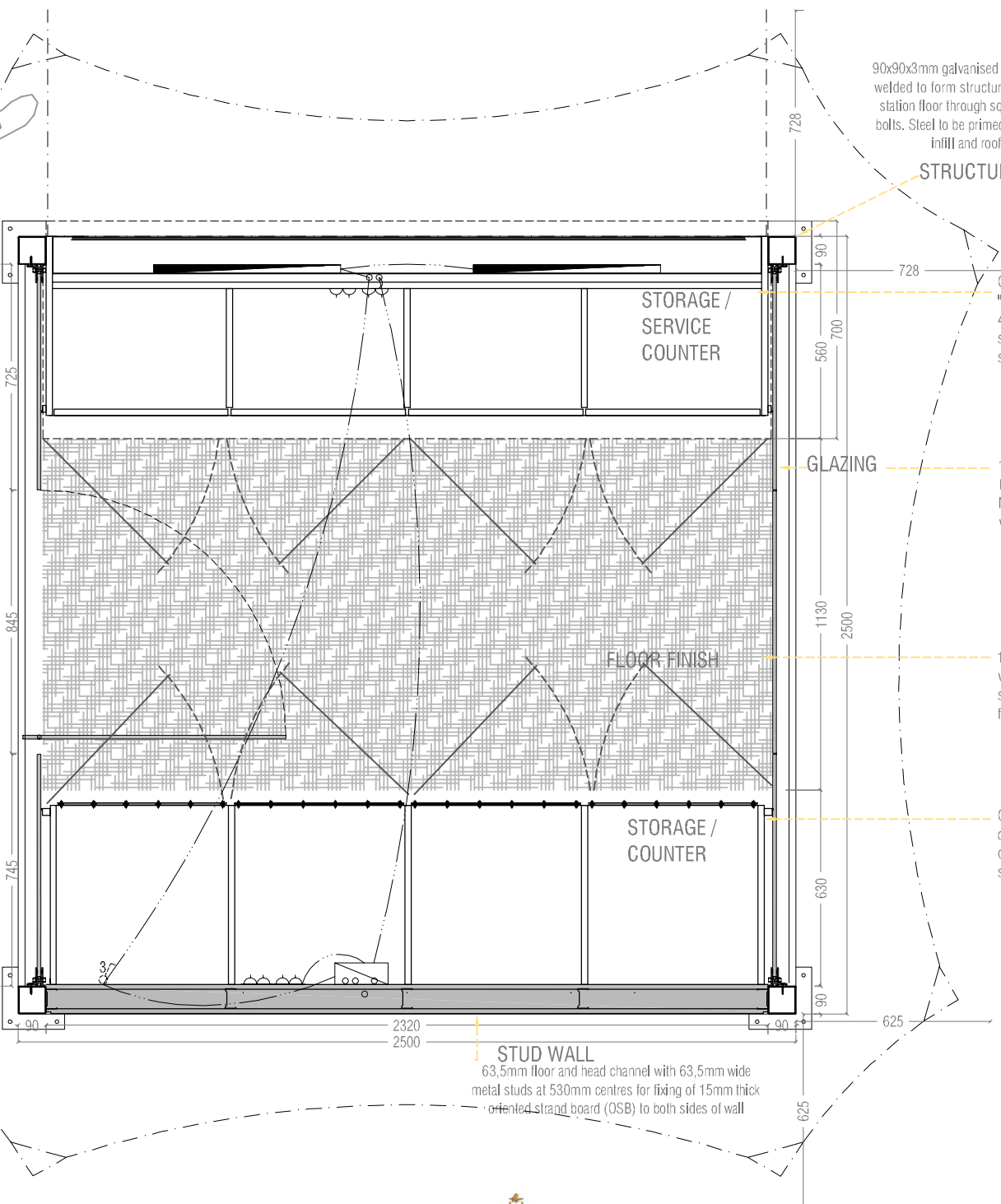
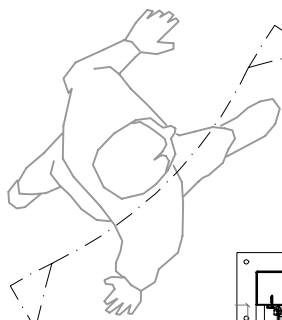
Okoume veneer storage and occasional display cupboards or preparation counter with counter top in "Primary Green" Formica laminate with feature doors in green cast acrylic with adhesive vinyl transfer or customisable stainless steel wire pattern in steel frames

LEGEND

16 mm dia, 18W fluorescent tube lamp holders and lamps, 600mm length

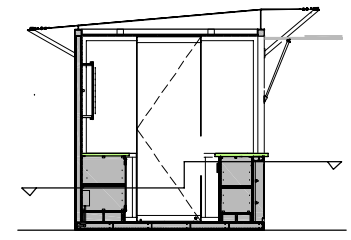
STUD WALL  
63,5mm floor and head channel with 63,5mm wide metal studs at 530mm centres for fixing of 15mm thick oriented strand board (OSB) to both sides of wall

High level plan  
Scale 1:20



90x90x3mm galvanised mild steel cold rolled square tubes welded to form structural frame, corner columns bolted to station floor through square base plate with 4 no. anchor bolts. Steel to be primed and painted dark grey. Holes for infill and roof masts to be pre-drilled.

**STRUCTURAL STEEL FRAME**



Plan level indicator

Okoume wood veneer storage and service counter with counter top in "Primary Green" Formica laminate with lightbox for signage to front in 4mm cast acrylic with adhesive vinyl decorative transfer for tenant signage (solid lettering, plastic, stainless steel or vinyl). 2 no. double sockets under counter with cable outlet in work top.

**GLAZING**

12mm laminated safety glazing to comply with SANS 50572 as relates to human contact, fixed in stainless steel profile frame through fixed with M7 hexagon bolts with suitable rubber washer at 560mm centres vertically and 610mm centres horizontally

**FLOOR FINISH**


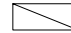

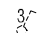
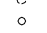
18mm thick oriented strand board (OSB) floor finish painted one layer white floor paint to allow retention of OSB surface texture, fixed to steel substructure with self tapping screw, holes in OSB to be filled with wood filler and leveled prior to painting

**STORAGE / COUNTER**

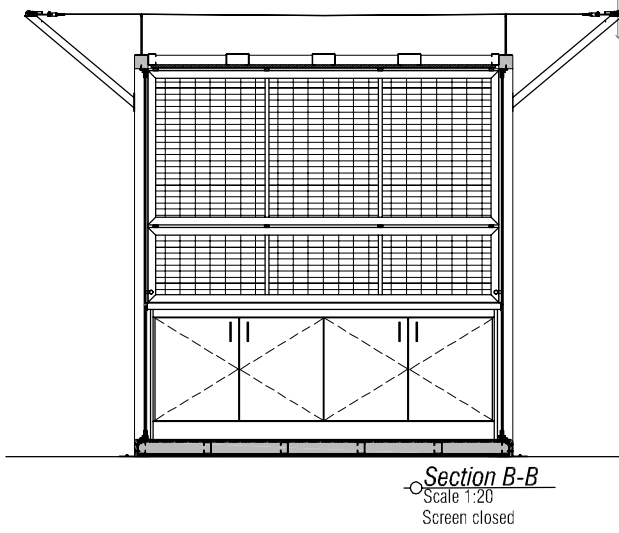
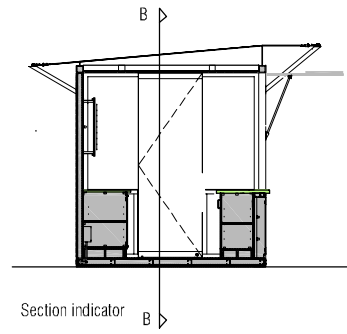
Okoume veneer storage and occasional display cupboards or preparation counter with counter top in "Primary Green" Formica laminate with feature doors in green cast acrylic with adhesive vinyl transfer or customisable stainless steel wire pattern in steel frames

**STUD WALL**  
63,5mm floor and head channel with 63,5mm wide metal studs at 530mm centres for fixing of 15mm thick oriented strand board (OSB) to both sides of wall

**LEGEND**

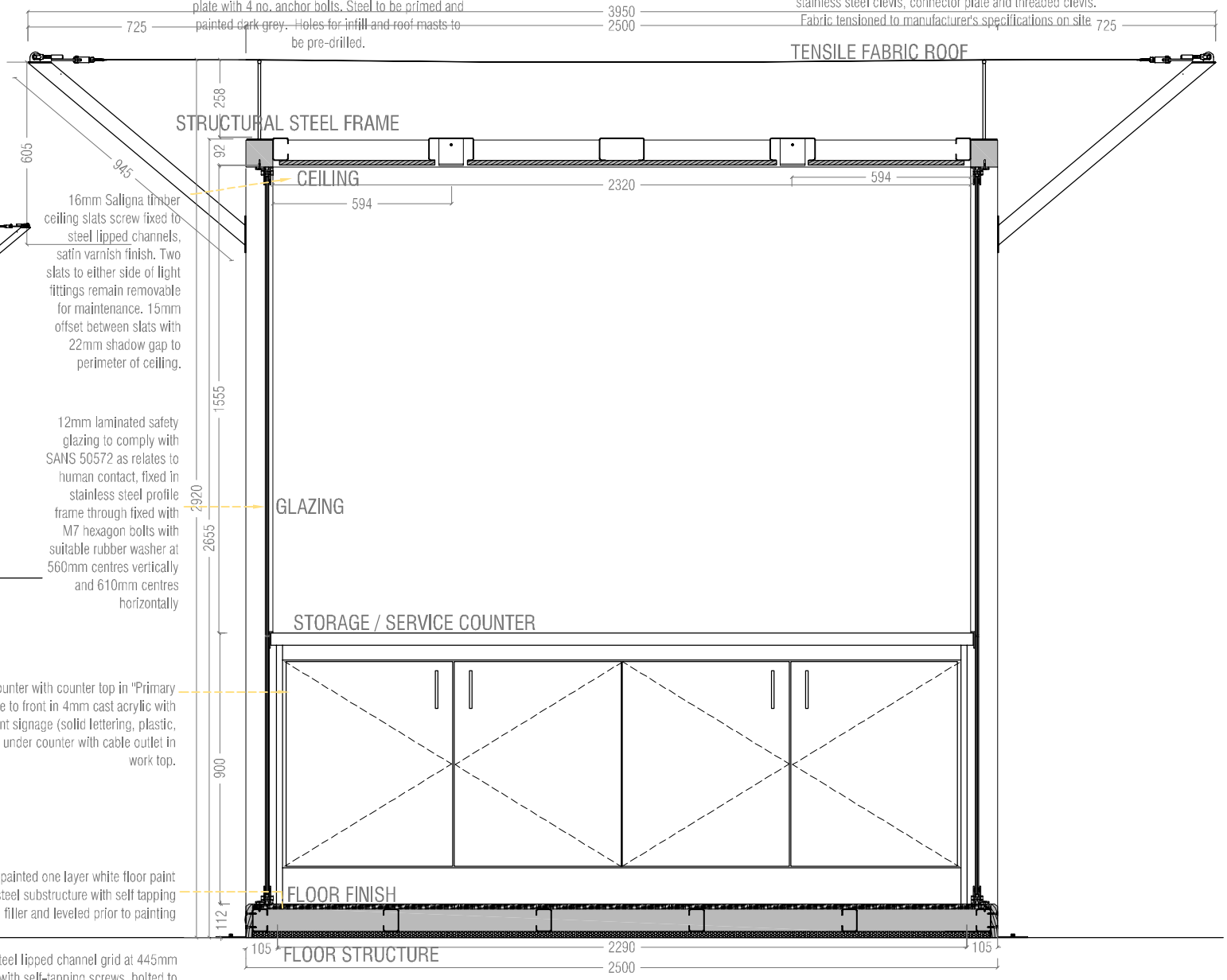
-  16 mm dia, 18W fluorescent tube lamp holders and lamps, 600mm length
-  Distribution board with minimum 3 no. micro circuit breakers (MCBs) and earth leakage test switch
-  Double socket under counter top level
-  3 gang light switch above counter top level
-  PVC conduit for electrical wiring

**Under counter plan**  
Scale 1:20



90x90x3mm galvanised mild steel cold rolled square tubes welded to form structural frame, corner columns bolted to station floor through square base plate with 4 no. anchor bolts. Steel to be primed and painted dark grey. Holes for infill and roof masts to be pre-drilled.

Satine 5500 fire retardant fibreglass tensile fabric with 6mm stainless steel catenary rope in RF welded catenary pocket (perimeter seams) attached to ends of steel masts by stainless steel clevis, connector plate and threaded clevis. Fabric tensioned to manufacturer's specifications on site



16mm Saligna timber ceiling slats screw fixed to steel lipped channels, satin varnish finish. Two slats to either side of light fittings remain removable for maintenance. 15mm offset between slats with 22mm shadow gap to perimeter of ceiling.

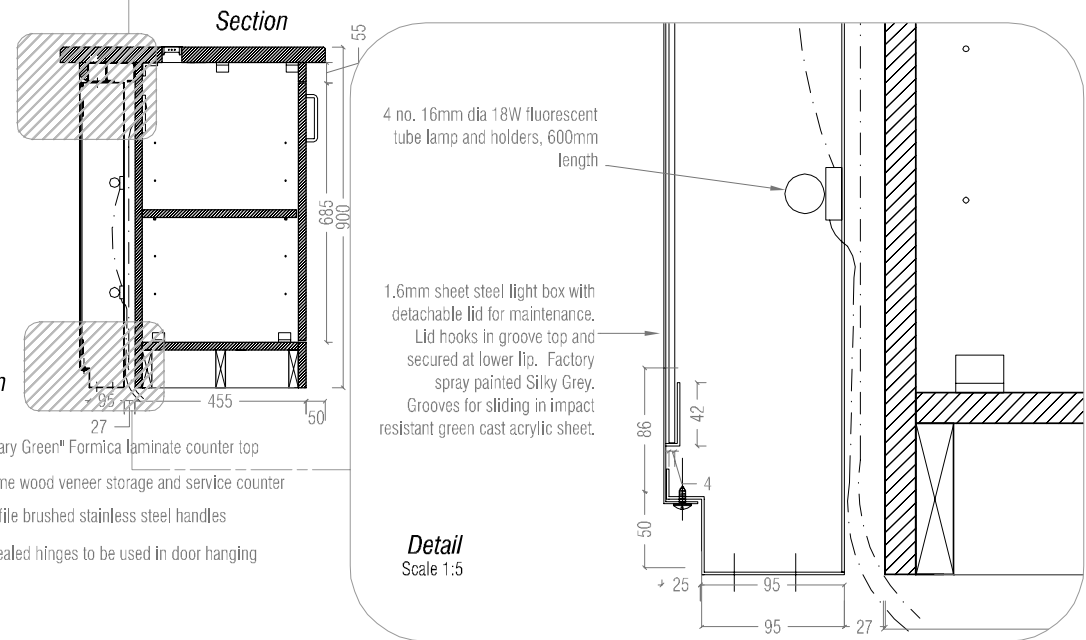
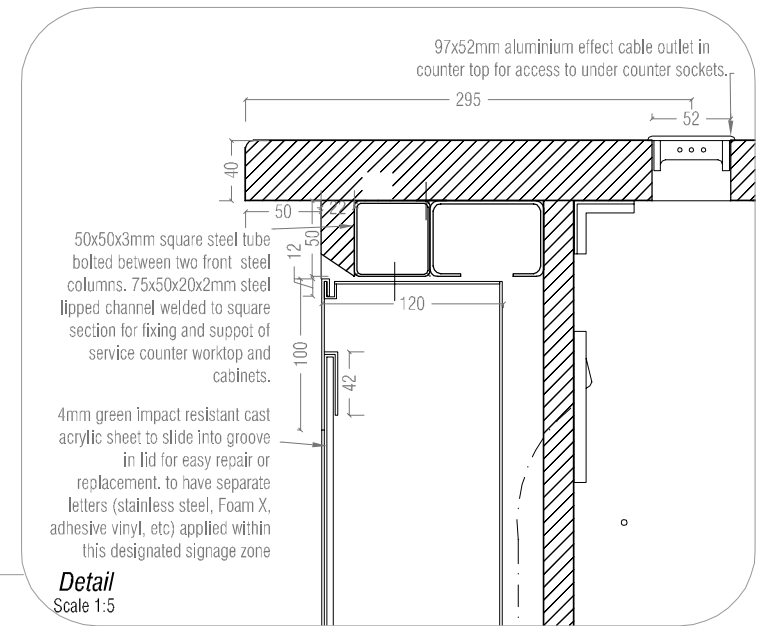
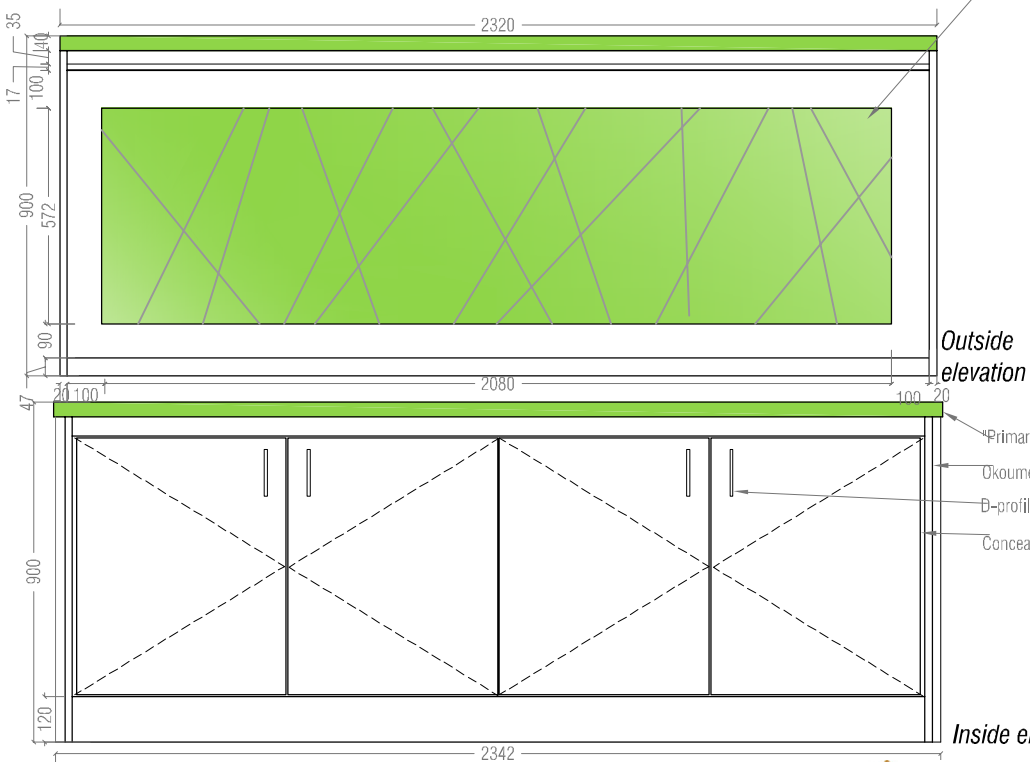
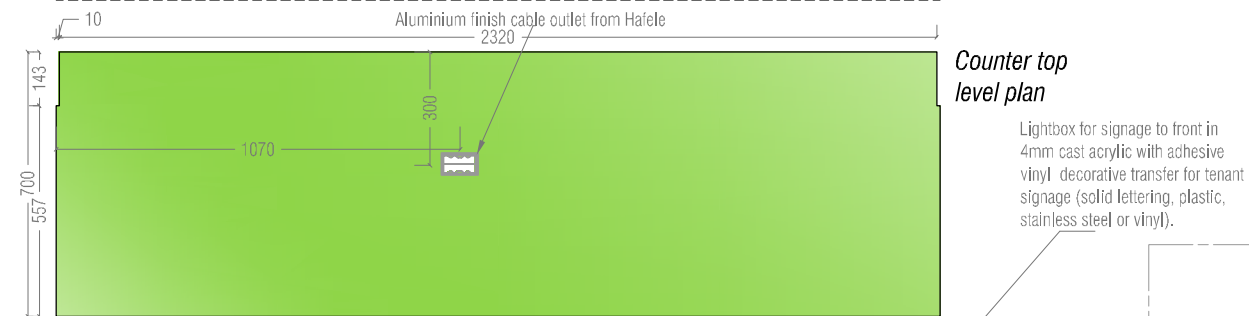
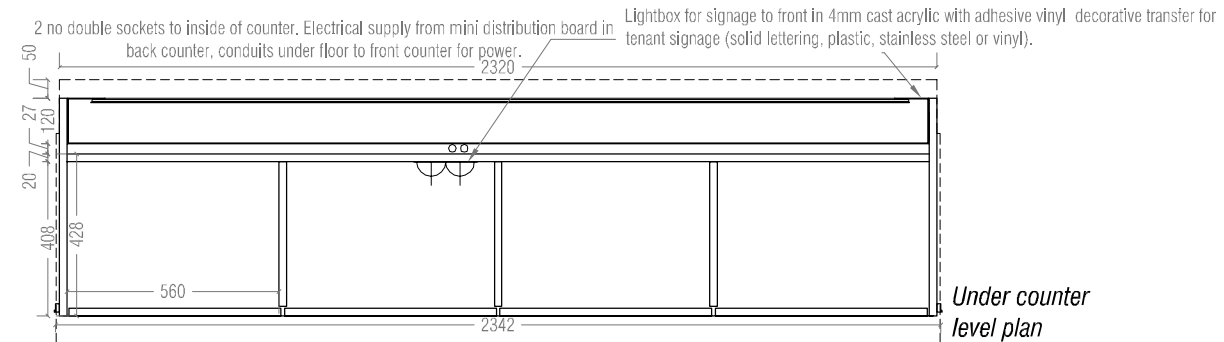
12mm laminated safety glazing to comply with SANS 50572 as relates to human contact, fixed in stainless steel profile frame through fixed with M7 hexagon bolts with suitable rubber washer at 560mm centres vertically and 610mm centres horizontally

Okoume wood veneer storage and service counter with counter top in "Primary Green" Formica laminate with lightbox for signage to front in 4mm cast acrylic with adhesive vinyl decorative transfer for tenant signage (solid lettering, plastic, stainless steel or vinyl). 2 no. double sockets under counter with cable outlet in work top.

18mm thick oriented strand board (OSB) floor finish painted one layer white floor paint to allow retention of OSB surface texture, fixed to steel substructure with self tapping screw, holes in OSB to be filled with wood filler and leveled prior to painting

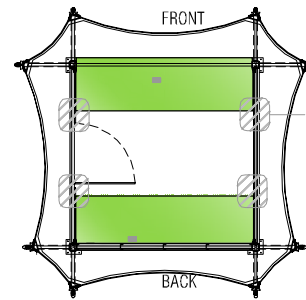
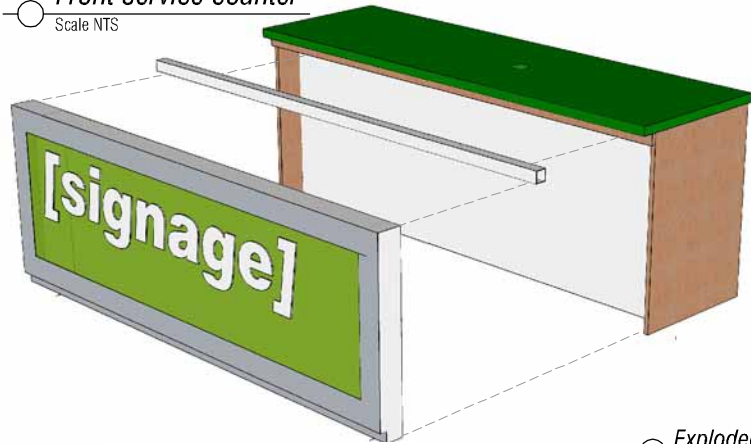
75x50x20x2mm deck of Clotan galvanised mild steel lipped channel grid at 445mm centres, with channels pre-punched to allow fixing with self-tapping screws, bolted to corner columns. Openings for PVC conduit pre-cored. 915x915x20mm thick protective neoprene rubber underlay sheets cut to size with adhesive backing fixed to substrate flooring (ceramic tiles / terrazzo)

**Section B-B**  
Scale 1:20



**Front service counter**  
Scale 1:20

Front service counter  
Scale NTS

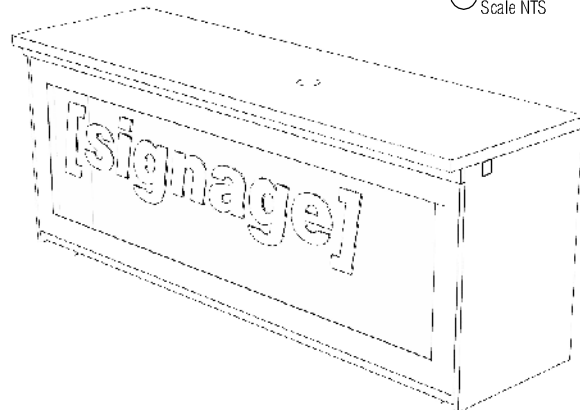


KEY PLAN  
Scale 1:100

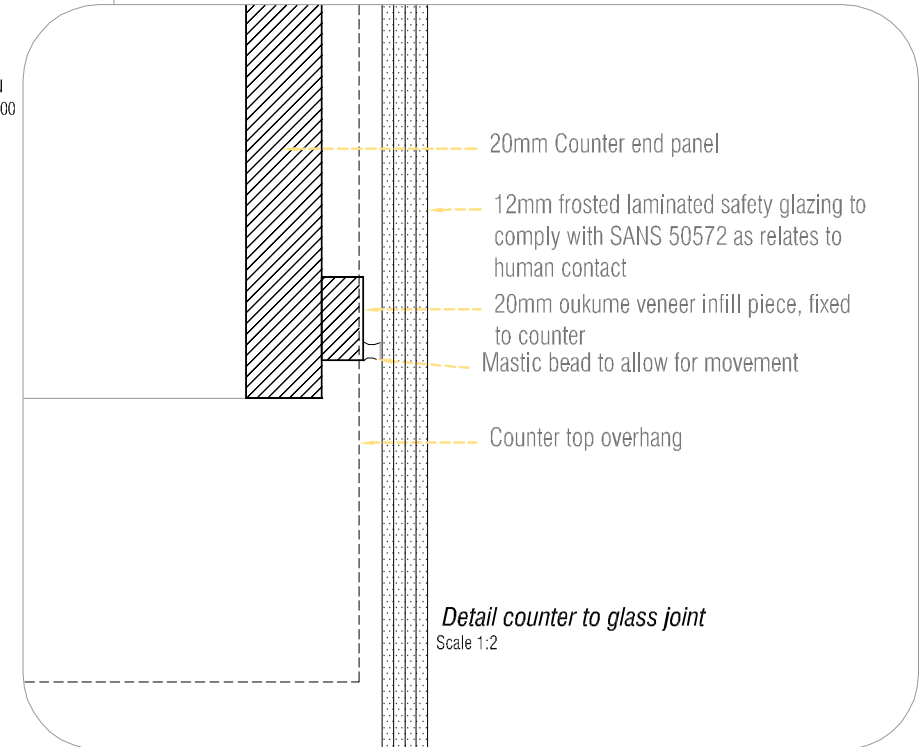
Alternative to lightbox, commercially available magazine gondola to exterior of front counter



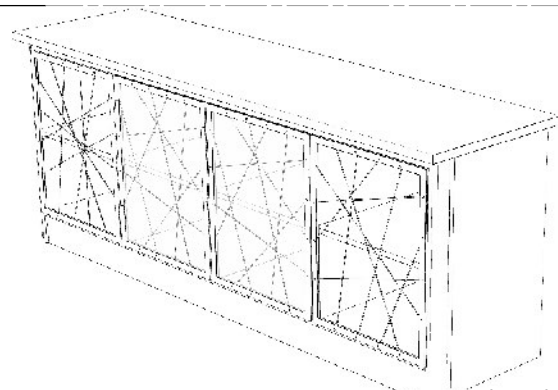
Exploded isometric projection  
Scale NTS



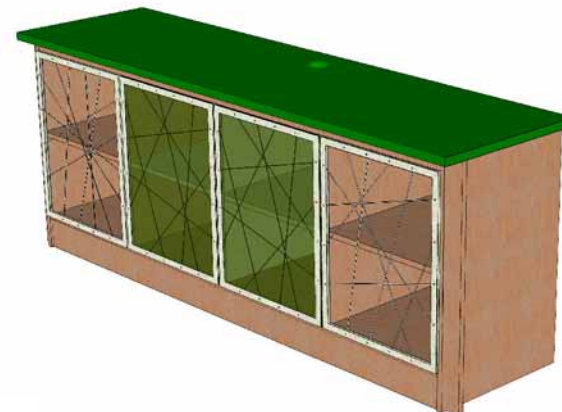
Isometric projection  
Scale NTS

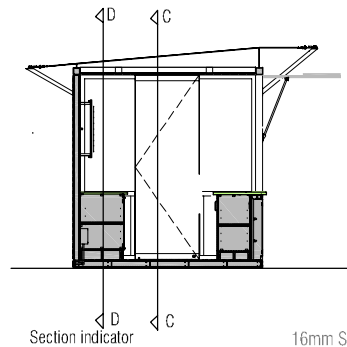


Back counter  
Scale NTS



Isometric projection  
Scale NTS





90x90x3mm galvanised mild steel cold rolled square tubes welded to form structural frame, corner columns bolted to station floor through square base plate with 4 no. anchor bolts. Steel to be primed and painted dark grey. Holes for infill and roof masts to be pre-drilled.

Satine 5500 fire retardant fibreglass tensile fabric with 6mm stainless steel catenary rope in RF welded catenary pocket (perimeter seams) attached to ends of steel masts by stainless steel clevis, connector plate and threaded clevis. Fabric tensioned to manufacturer's specifications on site

16mm Saligna timber ceiling slats screw fixed to steel lipped channels, satin varnish finish. Two slats to either side of light fittings remain removable for maintenance. 15mm offset between slats with 22mm shadow gap to perimeter of ceiling.

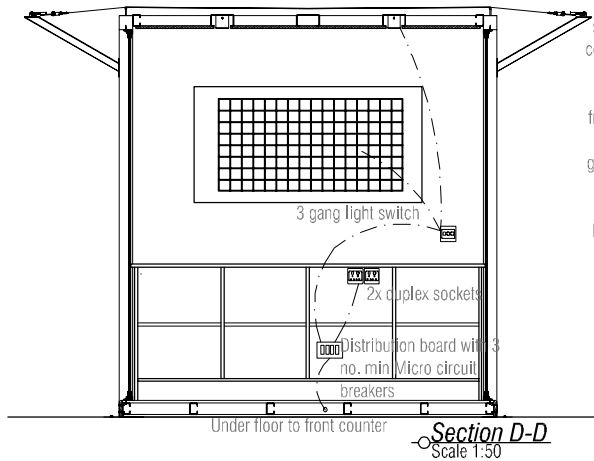
12mm thick Surinno solid surface resin composite in colour Alabaster supporting proprietary chromed wire gridwall display system from Cyntron Wire Products fixed back to wall with galvanised mild steel angle brackets fixed into metal wall studs or battens between studs for support.

15mm thick oriented strand board (OSB) semi-gloss varnished to inside and outside of kiosk, fixed to metal furring studs with self tapping screws, holes to be filled with wood filler in colour to match board and leveled prior to varnishing

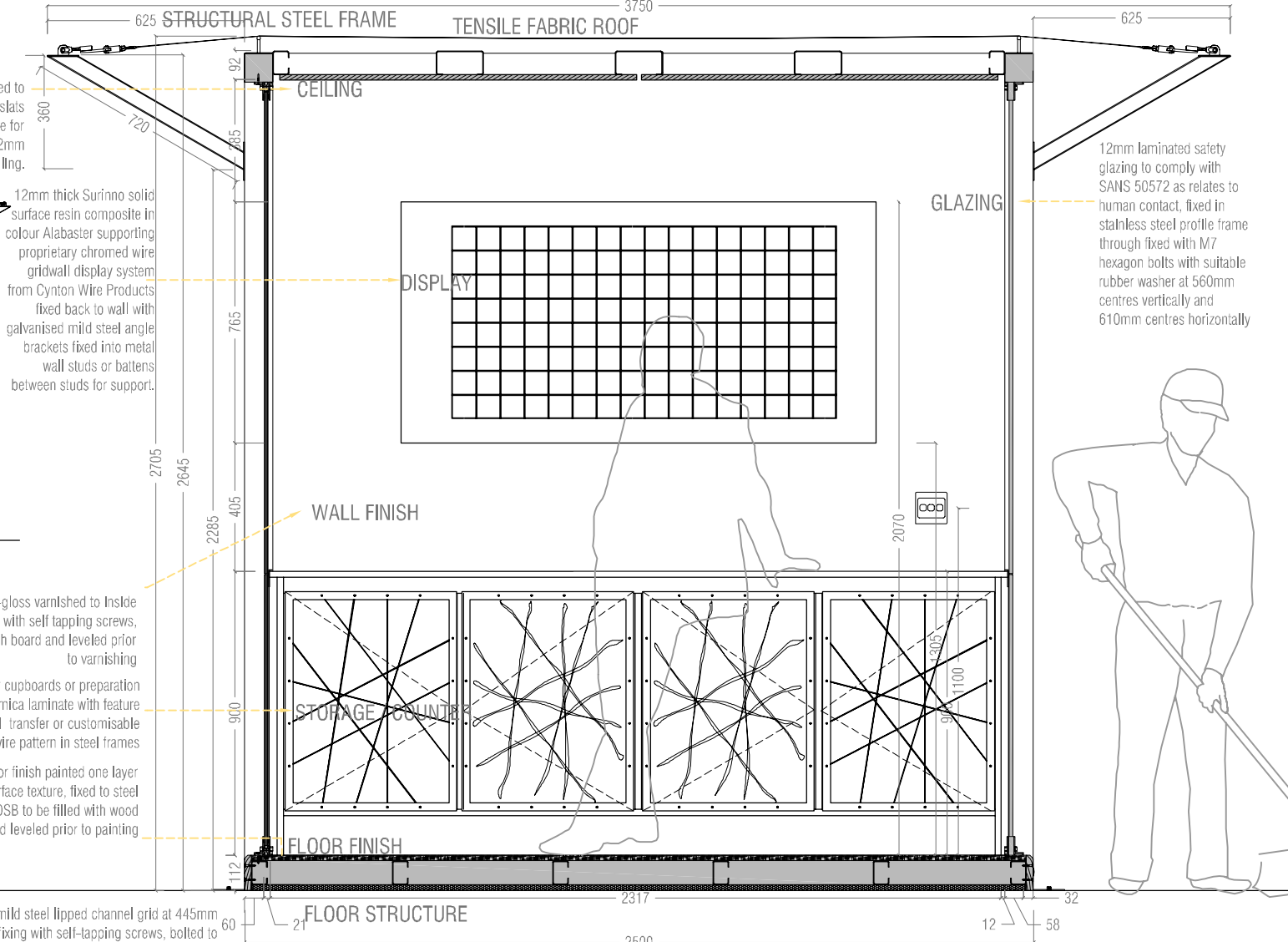
Okoume veneer storage and occasional display cupboards or preparation counter with counter top in "Primary Green" Formica laminate with feature doors in green cast acrylic with adhesive vinyl transfer or customisable stainless steel wire pattern in steel frames

18mm thick oriented strand board (OSB) floor finish painted one layer white floor paint to allow retention of OSB surface texture, fixed to steel substructure with self tapping screw, holes in OSB to be filled with wood filler and leveled prior to painting

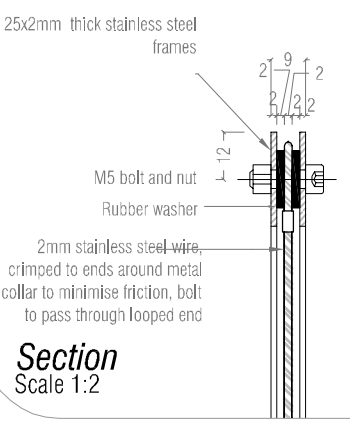
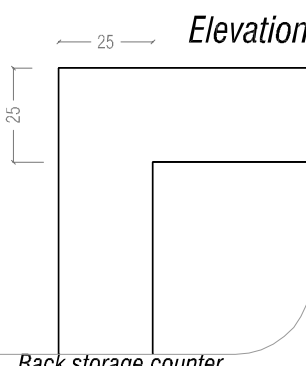
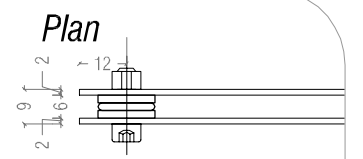
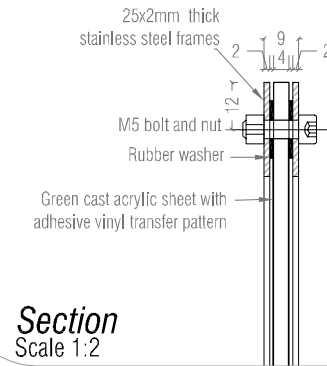
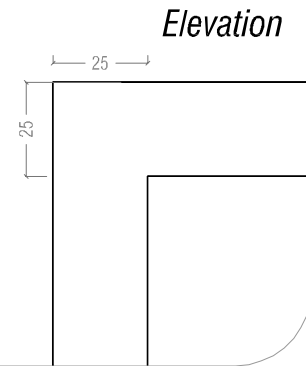
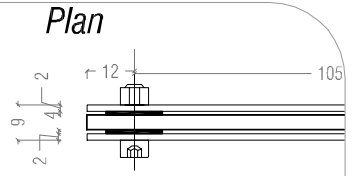
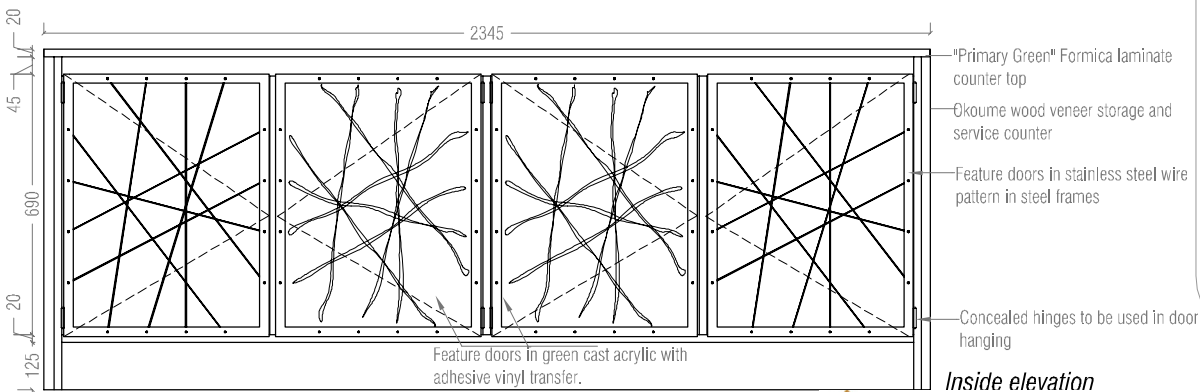
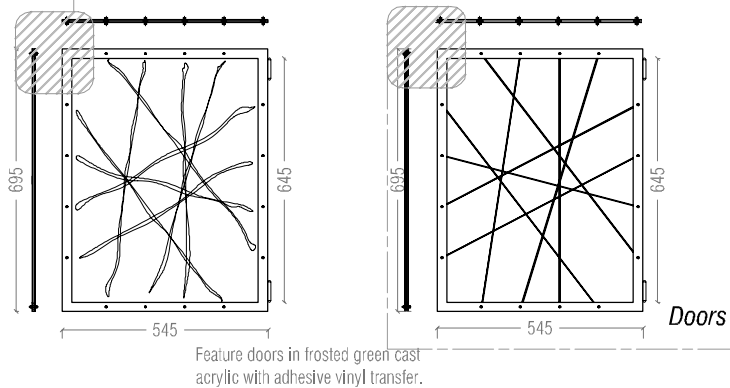
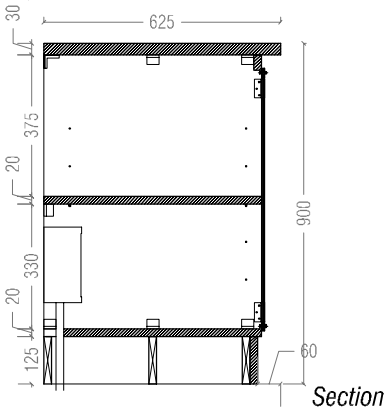
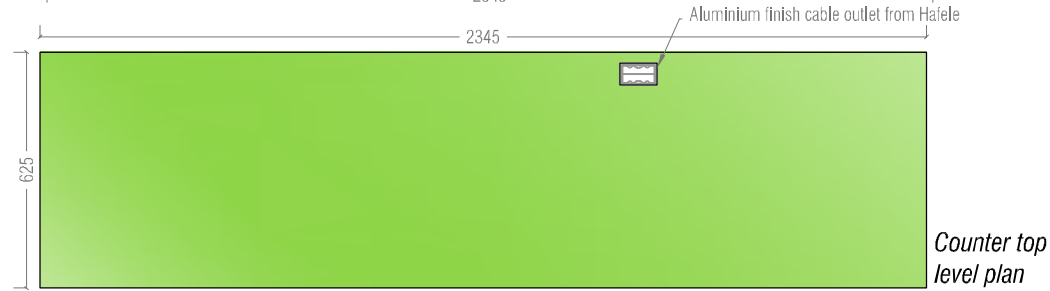
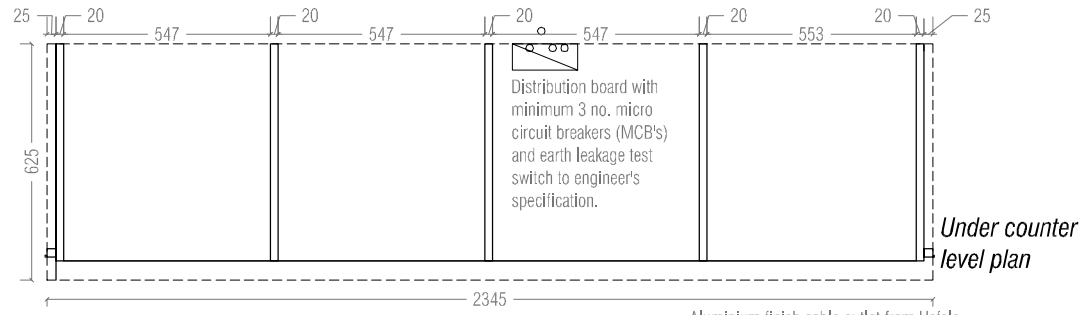
75x50x20x2mm deck of Clotan galvanised mild steel lipped channel grid at 445mm centres, with channels pre-punched to allow fixing with self-tapping screws, bolted to corner columns. Openings for PVC conduit pre-cored, 915x915x20mm thick protective neoprene rubber underlay sheets cut to size with adhesive backing fixed to substrate flooring (ceramic tiles / terrazzo)



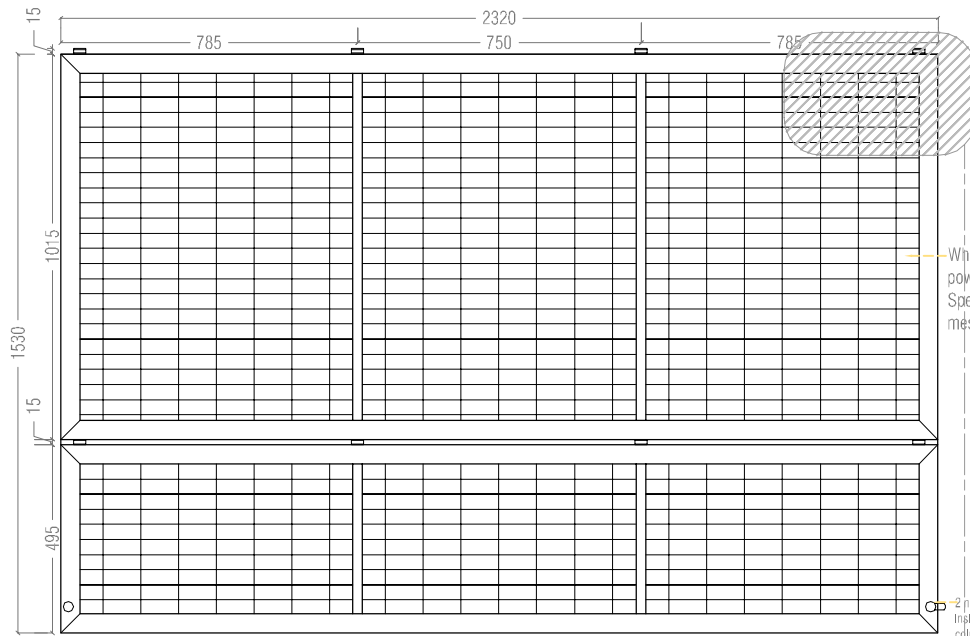
3 gang light switch  
2x duplex sockets  
Distribution board with no. min Micro circuit breakers



Section C-C  
Scale 1:20



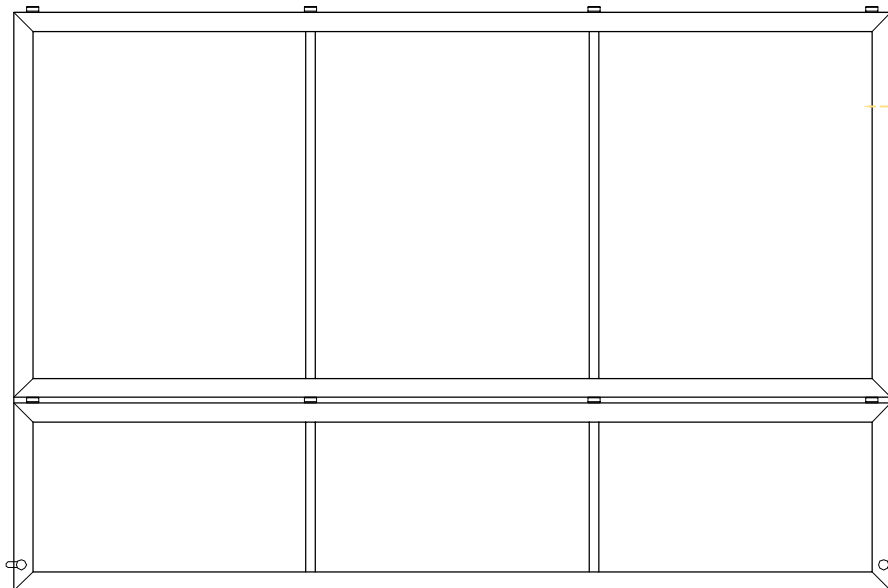
Back storage counter Scale 1:20



White polyester powder coated Specimesh steel mesh to inside

2 no. Camlocks, one to each side to inside throw into grooves cut into steel columns

*Inside elevation*

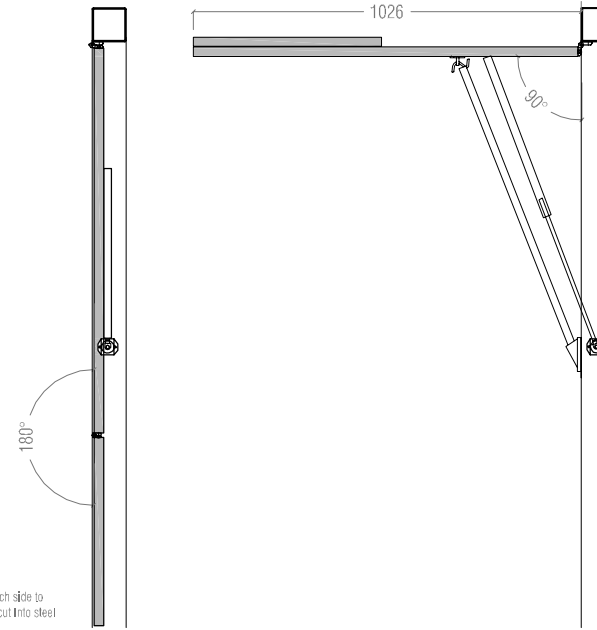


4mm twin walled polycarbonate sheet outer layer with "free" matt adhesive vinyl transfer.

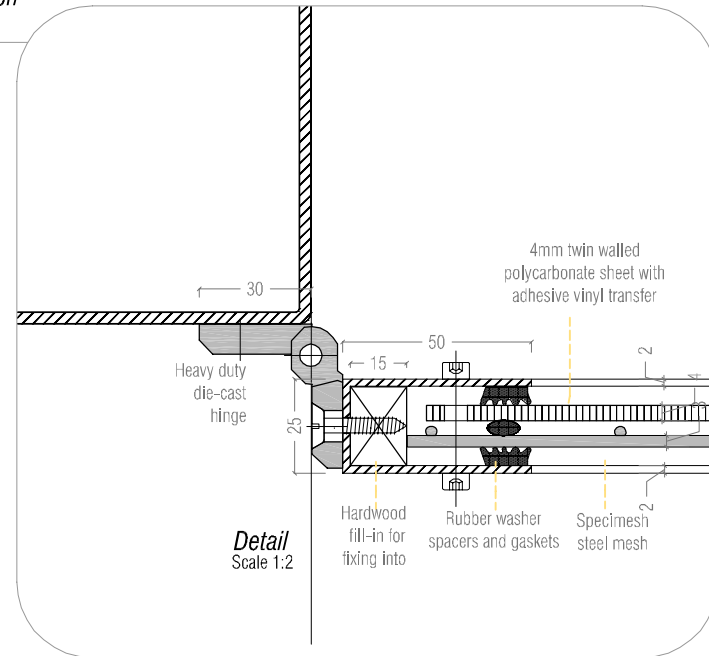
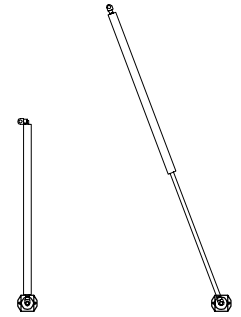
*Outside elevation*



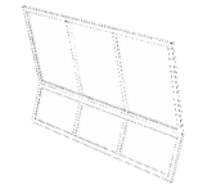
*Plan*



2 no Gas springs (one at each end) each capable of 100-1200N force, for panels 25 - 140 kg. 850mm fully extended, 450mm closed. Hooked end pole for additional support and pulling screen down rests in cup on steel column.



*Detail*  
Scale 1:2

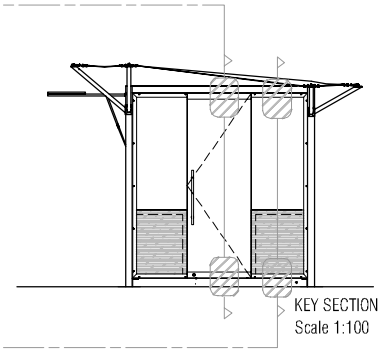
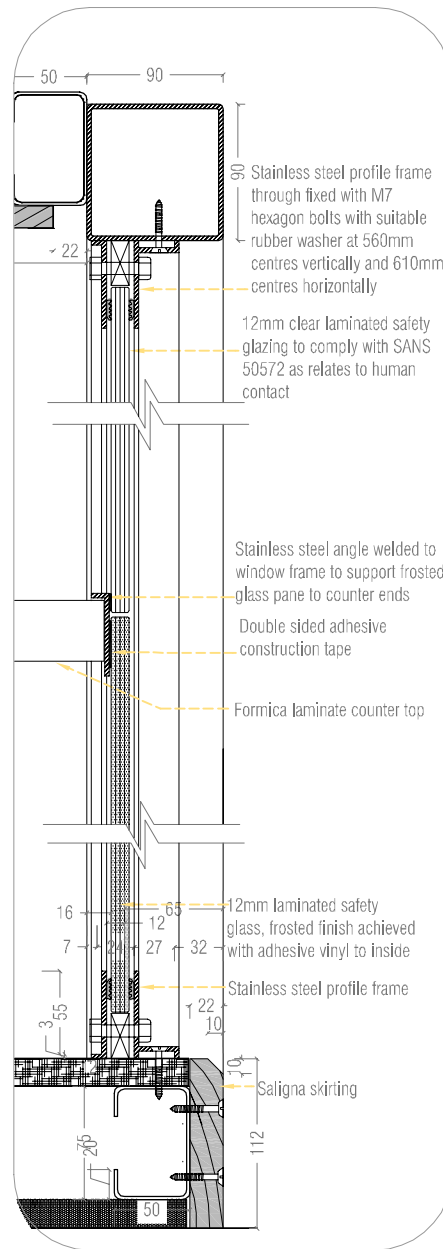
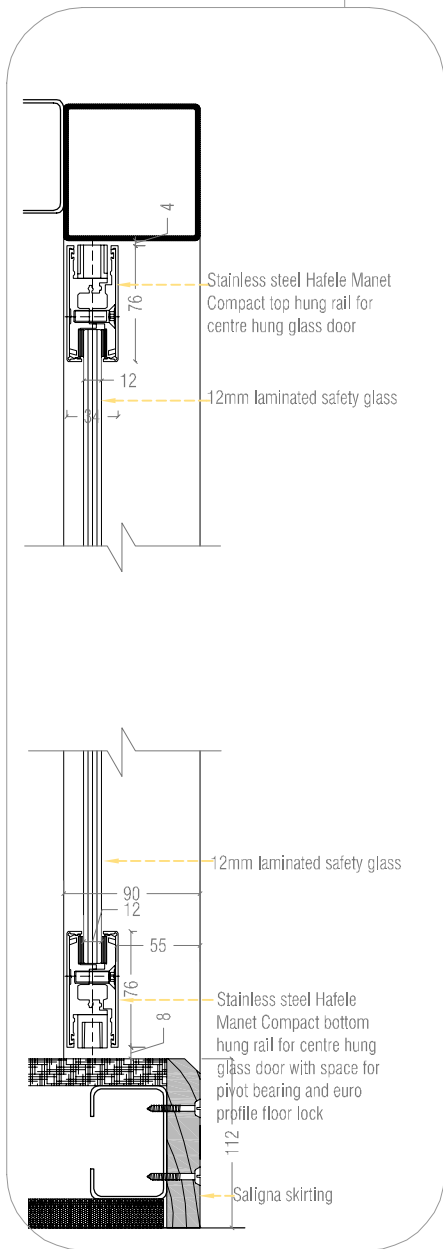


*Isometric projection*  
Scale NTS

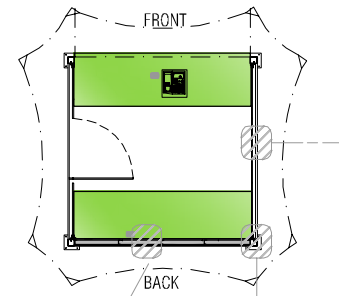
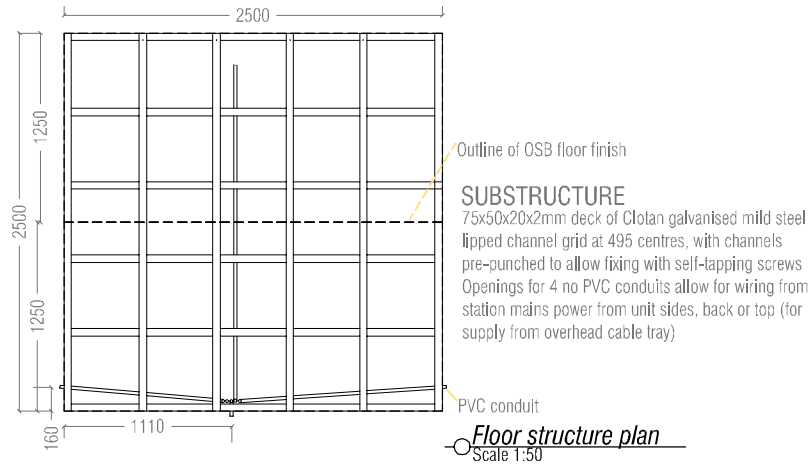


*Canopy / screen*  
Scale 1:20

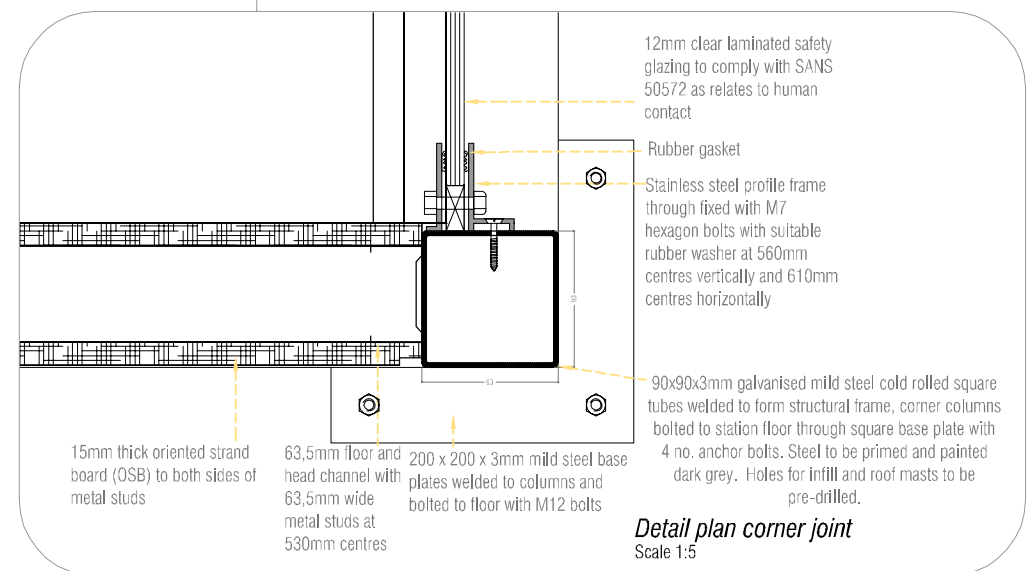
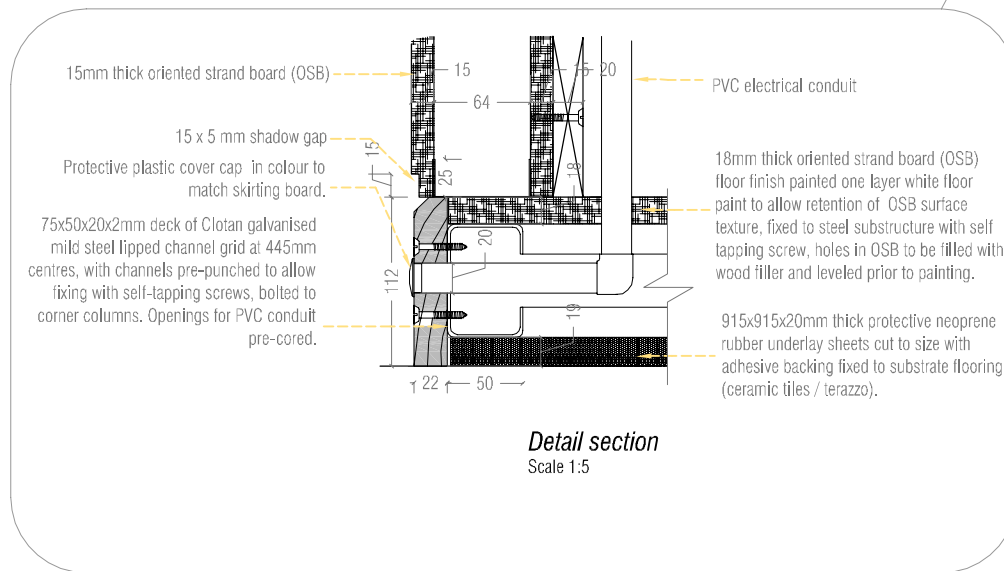
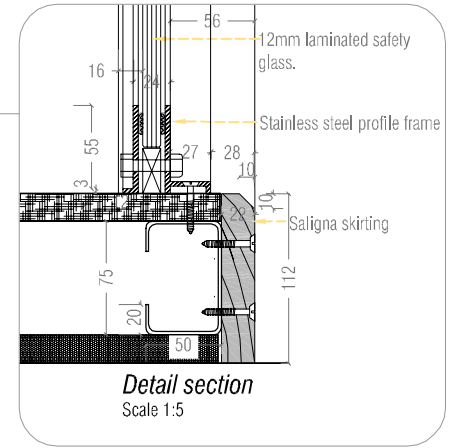




Glazing & door details  
Scale 1:5



KEY PLAN  
Scale 1:100



**Floor details**  
Scale: various