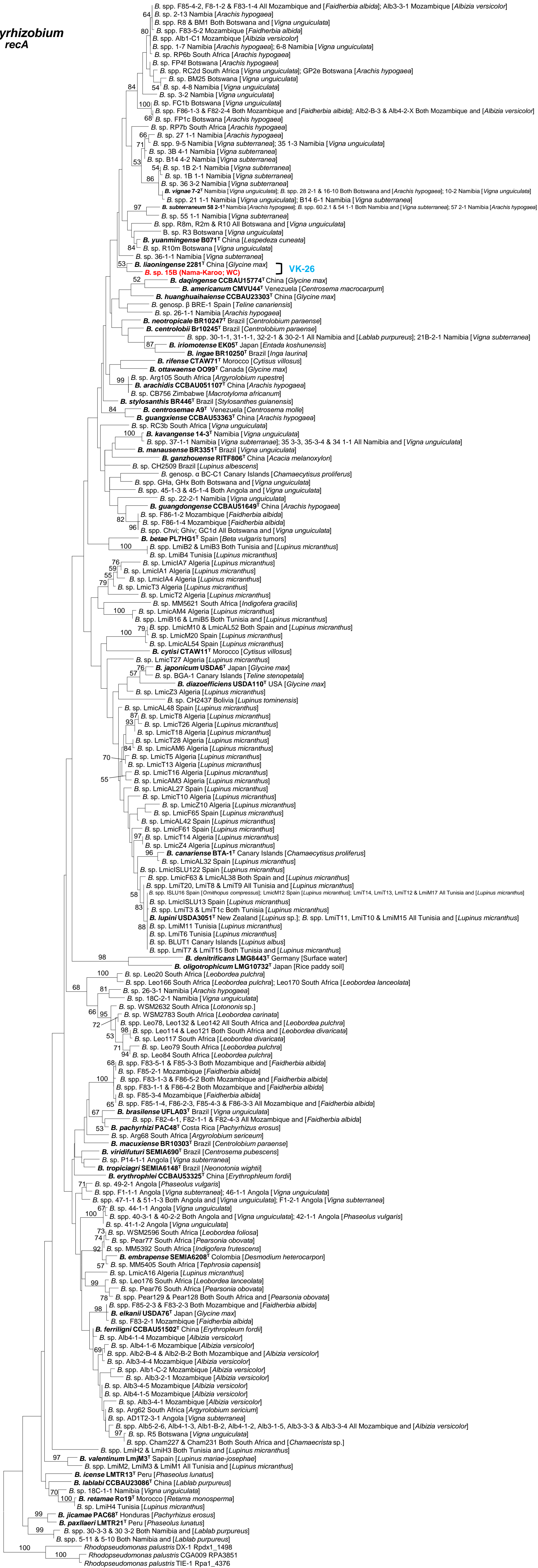


**Bradyrhizobium**  
**recA**



VK-26

0.05

**Suppl. Fig. S5** A *recA* maximum-likelihood phylogeny of the genus *Bradyrhizobium*. The single isolate recovered during this study is indicated in red, together with the information for which biome and province (abbreviated as in Table 1) the soil for the 'trapping' originated from. The lineage to which this isolate belongs (VK-26) appears in blue. *Bradyrhizobium* type strains are in bold, and all isolates include information for their country of origin and host or source. GenBank accession numbers and associated references for the included isolates are listed in Suppl. Table S5. Three *Rhodopseudomonas* isolates were used for outgroup purposes. Only bootstrap support of  $\geq 50\%$  is indicated and the scale bar indicates the number of nucleotide changes per site.