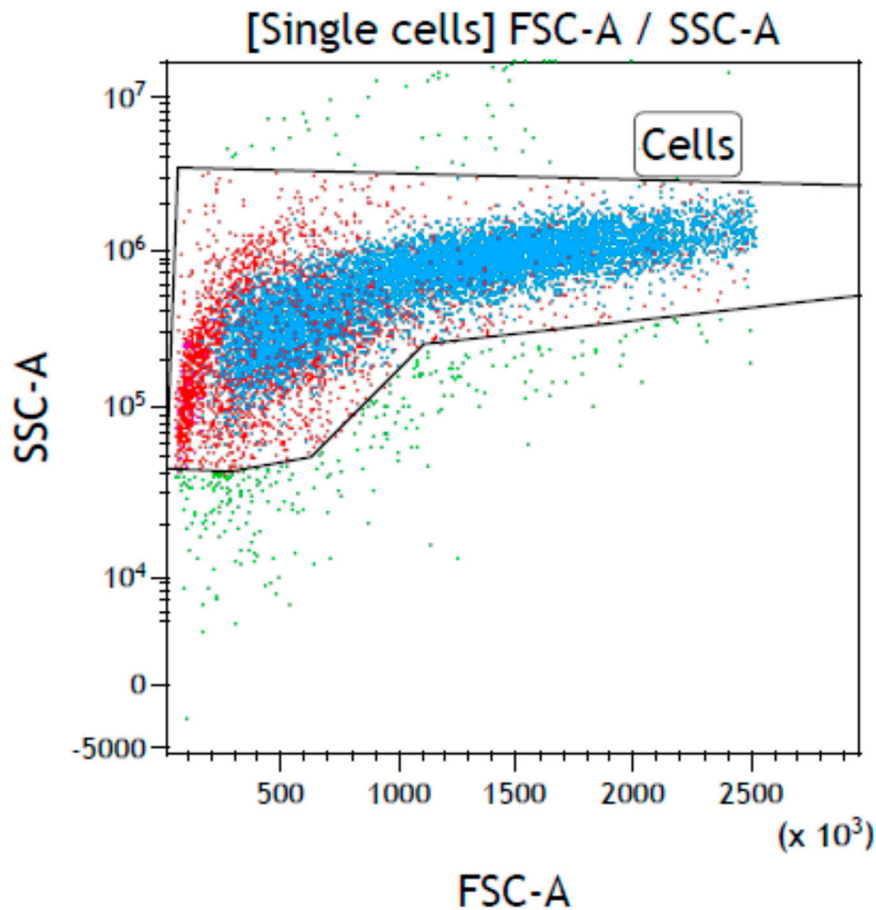
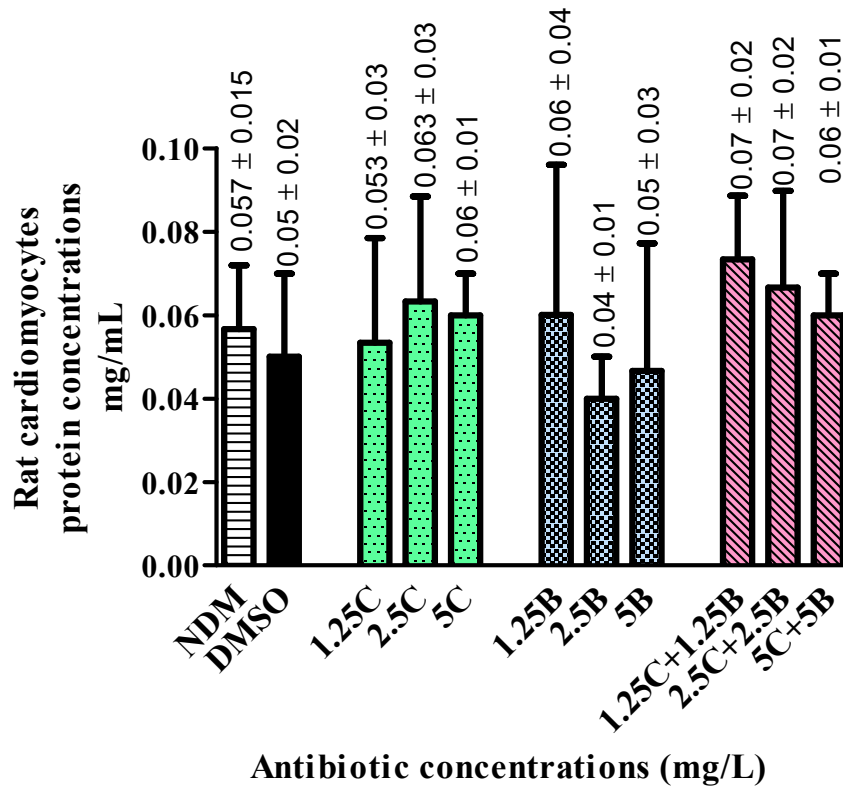


List of figures in supplementary

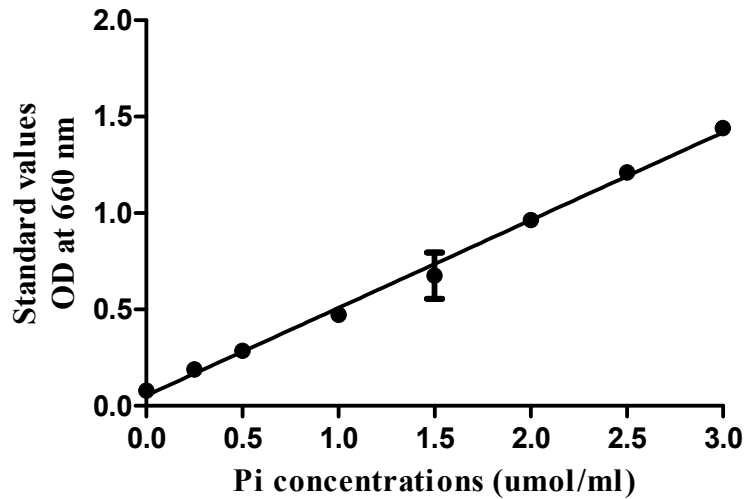


**Figure S1:** Flow cytometric scatter plot demonstrating the size of the rat cardiomyocytes (RCMs). The RCMs are large cells, with most of them being positioned between  $10^5$  and  $10^6$  coordinates on the Y-axis and zero and 500 on the X-axis. The majority of the cells are positioned closer to zero on the X-axis showing that they are viable (red dots).

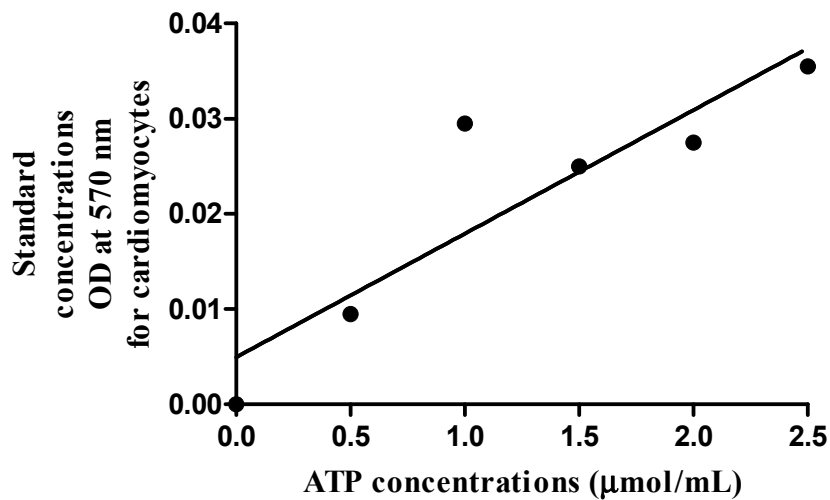
Abbreviations: FSC, forward scatter; SSC, short scatter.



**Figure S2:** The protein concentrations (mg/mL) of antibiotic-free and antibiotic-treated RCMs, extracted using vortex methods, which were used for the Na<sup>+</sup>,K<sup>+</sup>-ATPase activity determination, measured using nanodrop mg/mL. Abbreviations: B, bedaquiline; C, clofazimine; DMSO, dimethylsulphoxide; NDM, no DMSO.



**Figure S3:** The standard curve for inorganic phosphate (Pi) concentrations. The slope of the graph was  $Y = ax + b$  with  $a = 0.4551 \pm 0.01140$ , while  $b = 0.05283 \pm 0.01926$ .



**Figure S4:** The standard curve for determination of adenosine triphosphate (ATP) concentrations. The slope of the standard curve was  $y = ax + b = 0.013 \pm 0.003x + 0.005 \pm 0.0048$ .  $R^2 = 0.8055$

## Supplementary tables

**Table S1:** The variables used for determination of the Na<sup>+</sup>,K<sup>+</sup>-ATPase activity formula

Variable	Description	Detail
$\Delta A_{660}$	$OD_{\text{sample}} - OD_{\text{control}}$	
$C_{\text{pr}}$	Concentration of protein in sample (mg protein/mL)	Figure S2, Supplementary Material
b	Y intercept of standard curve	0.05283 $\pm$ 0.01926 (Figure S3, Supplementary Materials)
a	The slope of the standard curve	0.4551 $\pm$ 0.01140 (Figure S3)
$V_1$	The total volume of reaction system	0.25 mL
$V_2$	The volume of added sample	0.1 mL
t	The time of enzymatic reaction	(1/6 hours, i.e 10 minutes)
f	Dilution factor of supernatant sample before tested	Undiluted