

UNDERSIDE OF
STRUCTURE IF
MASKING BOARD
IS USED

UNDERSIDE OF
STRUCTURE
TOP OF GRID
STRUCTURE: SPRING

WORKSPACE

FEASER

STAGE

CYCLORAMA
MASKING BORDER

MASKING
BORDER

FEASER

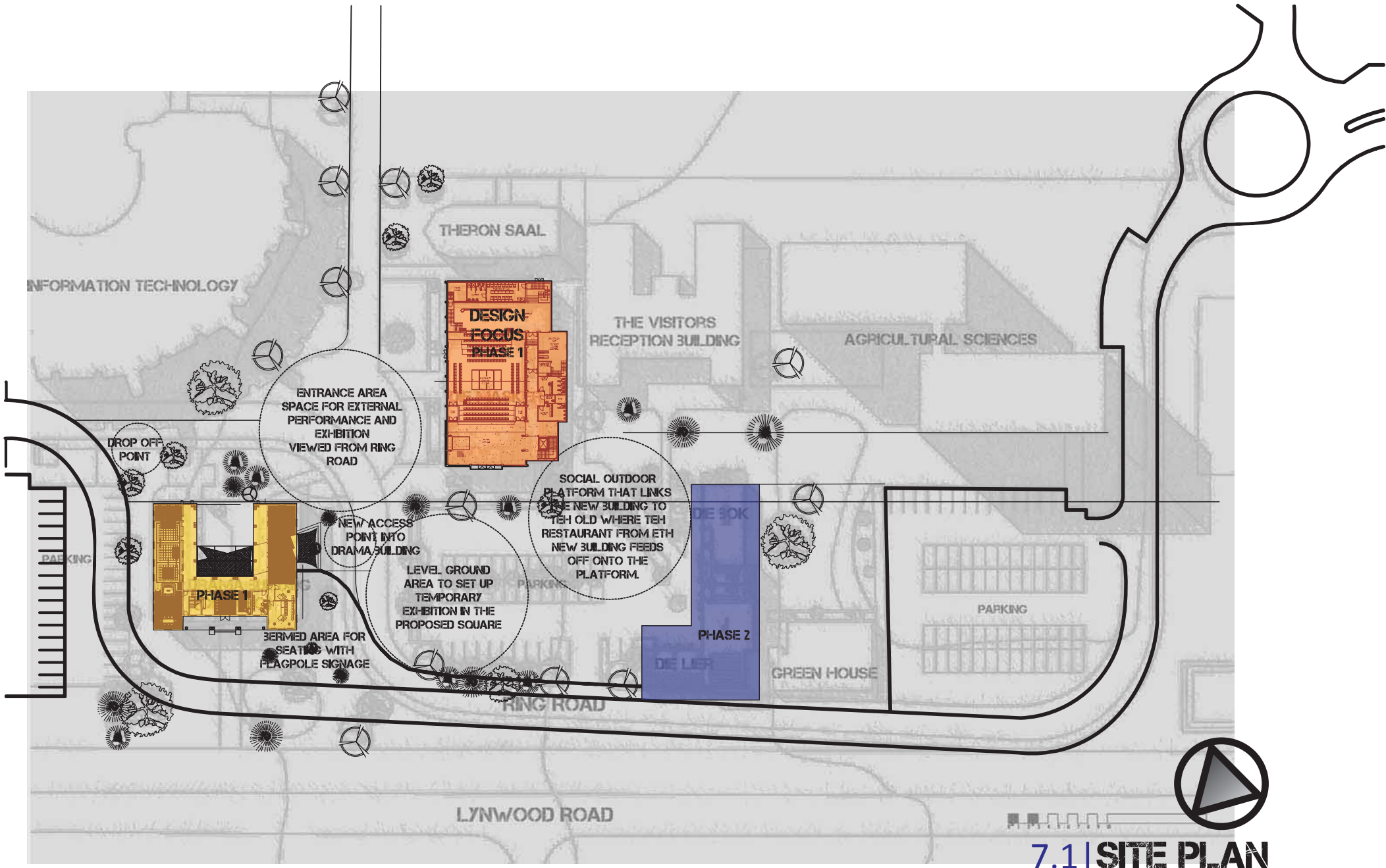
CYCLORAMA

STAGE

AUDIENCE

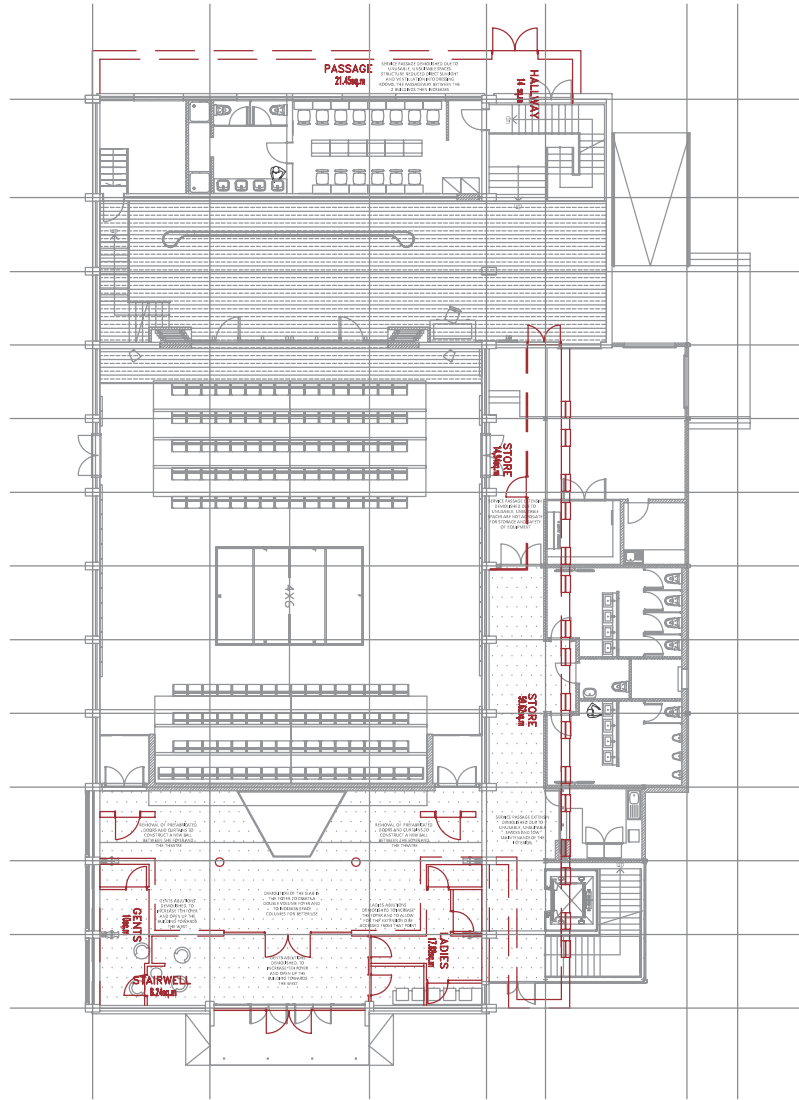
07

TECHNICAL
DRAWINGS

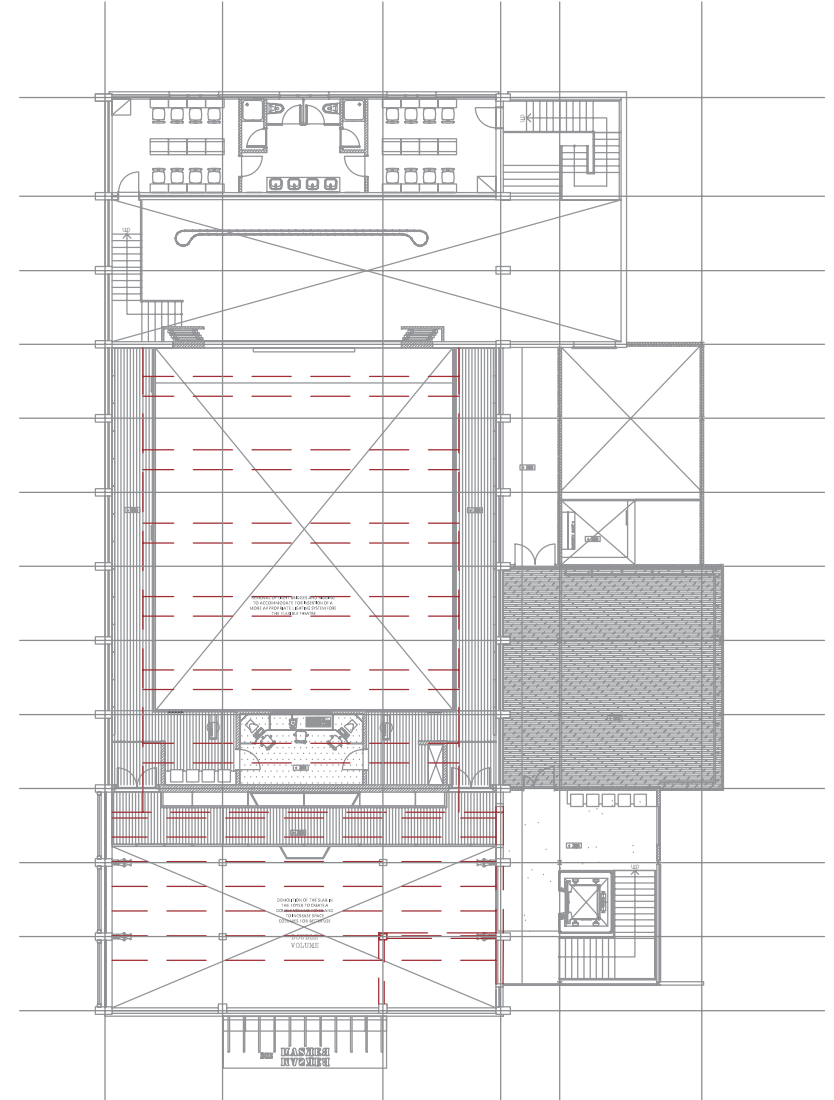


7.1 | SITE PLAN

1 : 1000



7.2.1 GROUND FLOOR

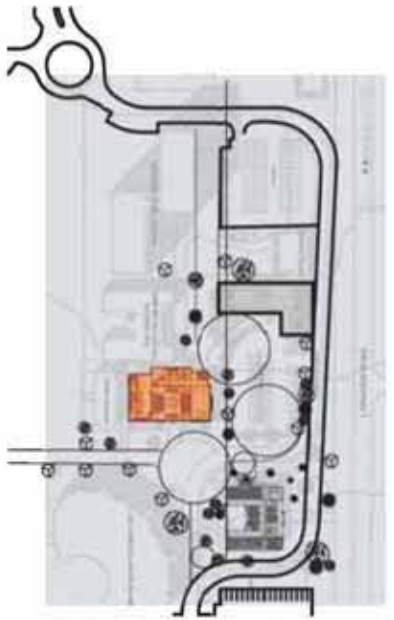
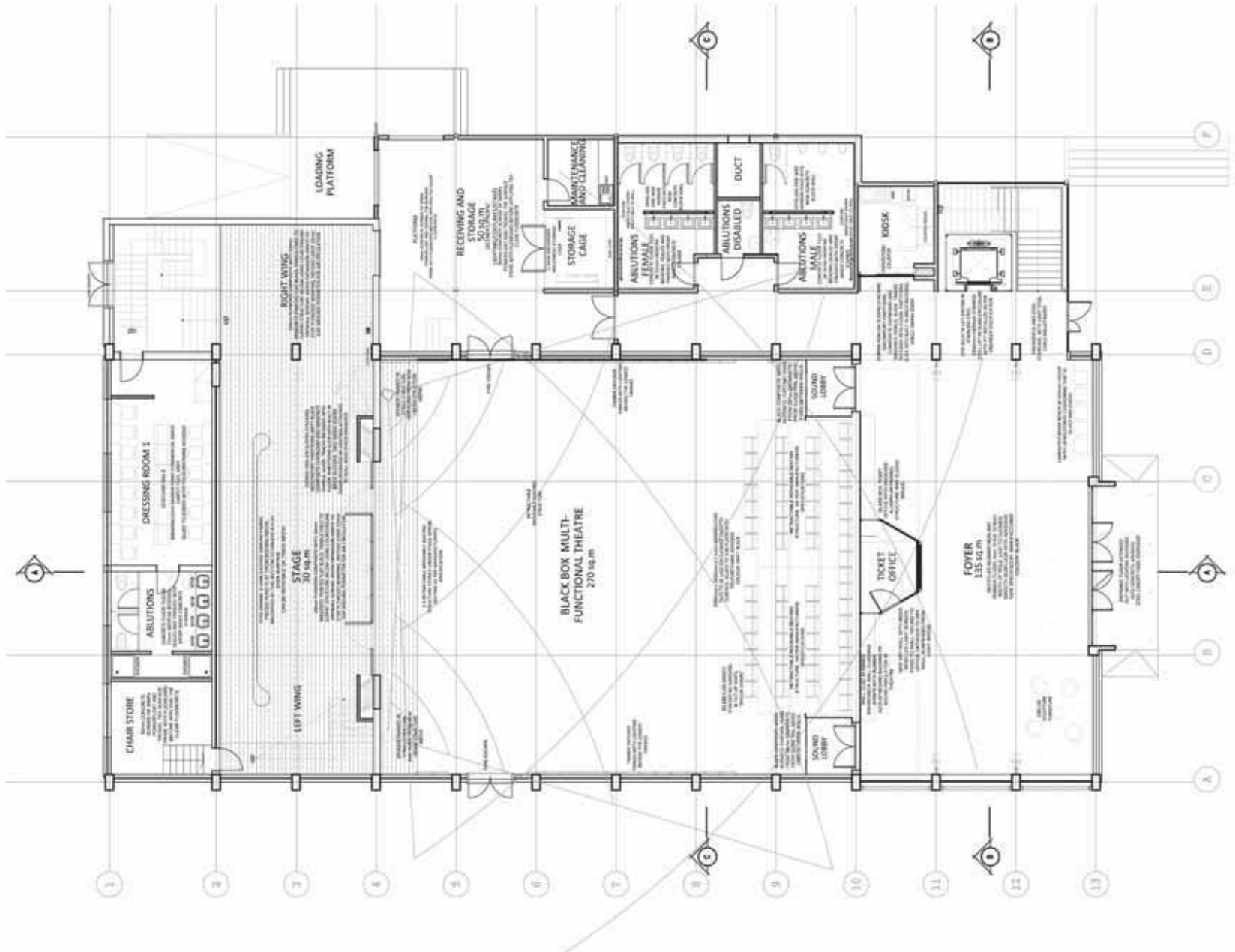


7.2.1 FIRST FLOOR

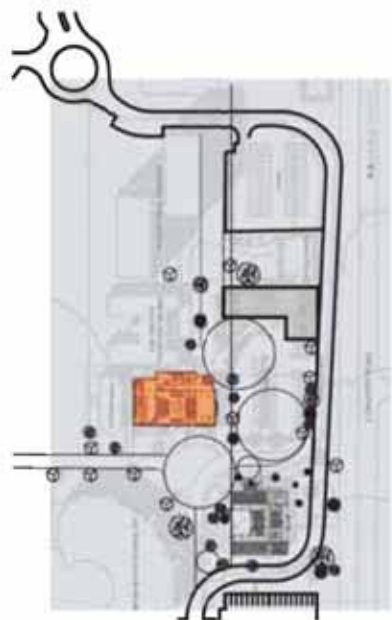
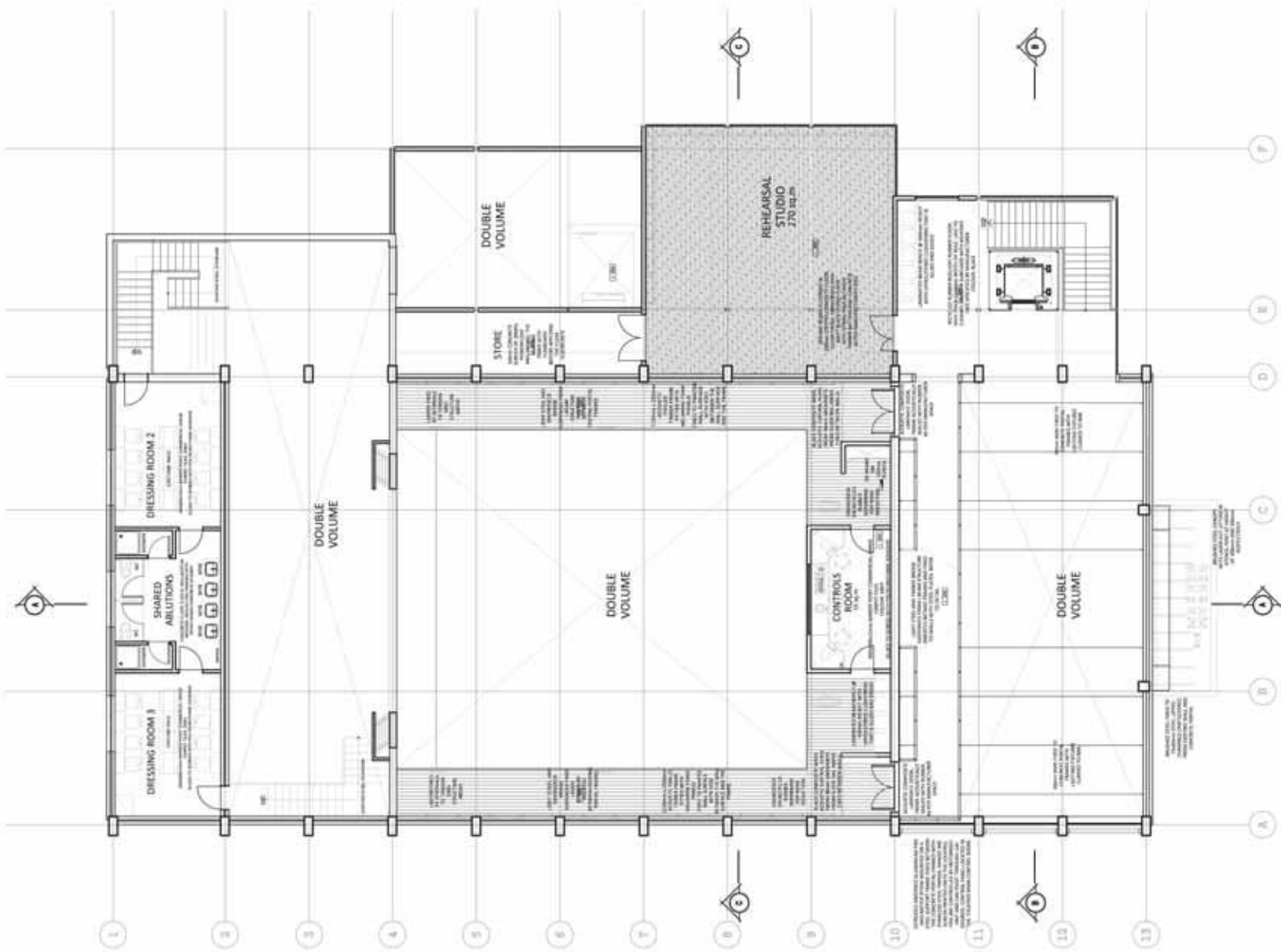


7.2 | GROUND AND FIRST FLOOR DEMOLITION PLANS

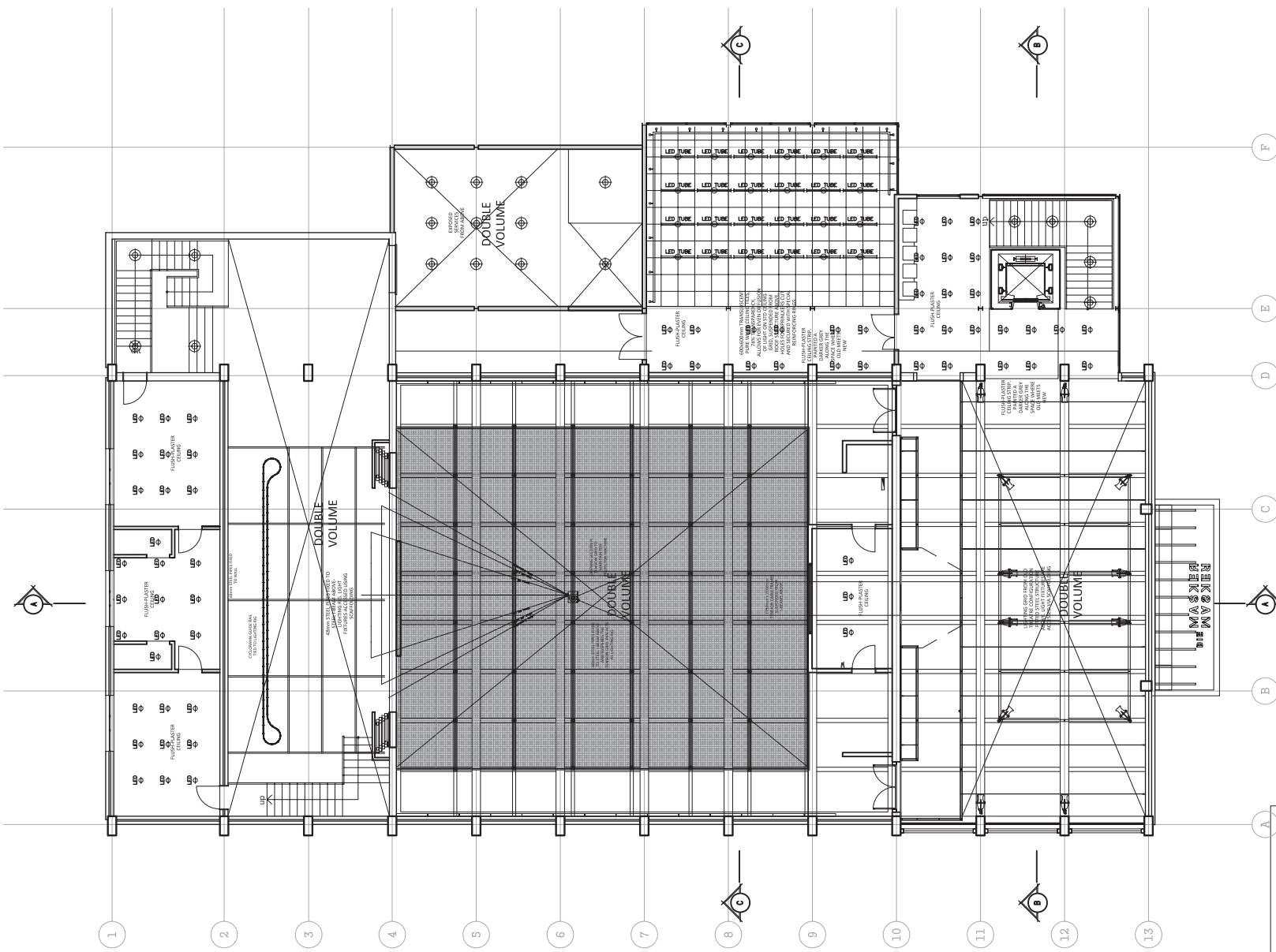
1 : 250



7.3 | GROUND FLOOR PLAN
1 : 150



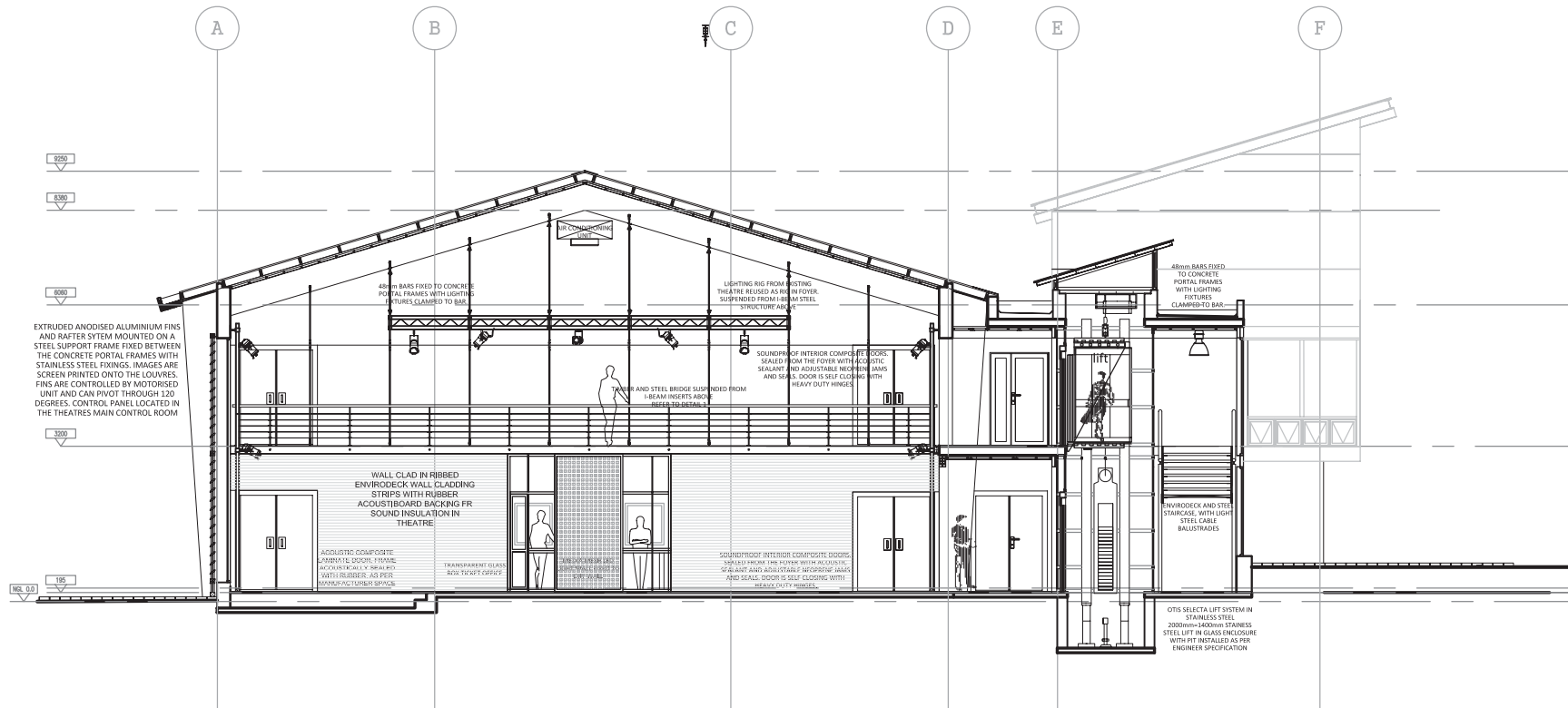
7.4 | FIRST FLOOR PLAN
1 : 150



KCT7	LED COLOUR CHANGING TUBE LIGHTS SUSPENDED FROM HANGERS FROM ROOF STRUCTURE. DIMMING IS CONNECTED TO A CONTROL ON WALL.
	DIMMABLE LED DOWN LIGHTING FIXTURES. POINT LIGHTING TO HIGHLIGHT AREAS. ENERGY EFFICIENT LIGHTING.
	PARCIN ANS FRESNEL THEATRE LAMPS FOR GENERAL COVER AND HIGHLIGHTING. DIMMING FROM CONTROL PANEL LOCATED IN TICKET OFFICE
	GENLUX DECOR HIBBY LIGHTING FOR SERVICE AREAS, SERVICE AND CIRCULATION AREAS. BRIGHT ILLUMINATION FOR SERVICE AREAS.

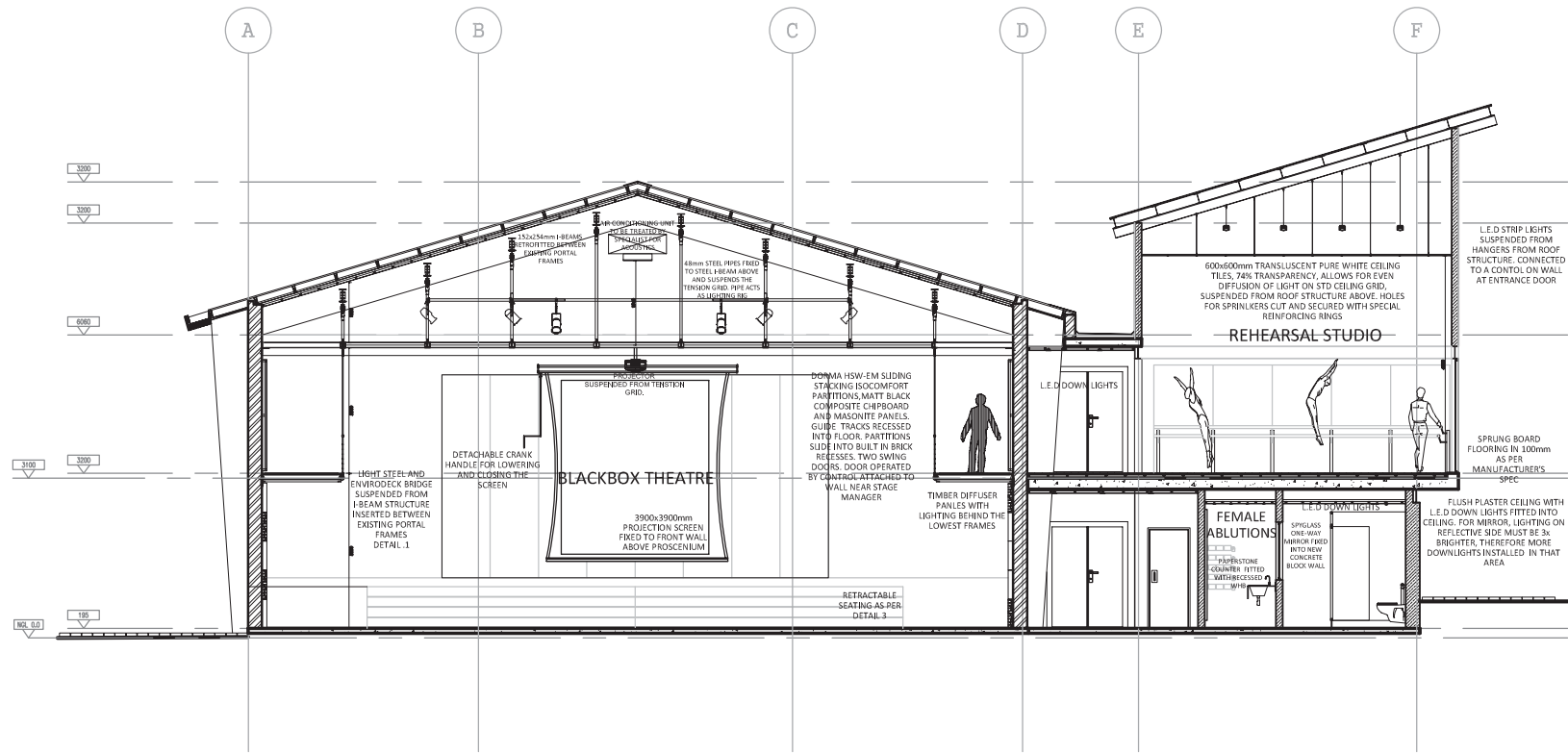
7.5 | PLAN SHOWING TENSION GRID SYSTEM AND LIGHTING IN THE STUDIO

1 : 150



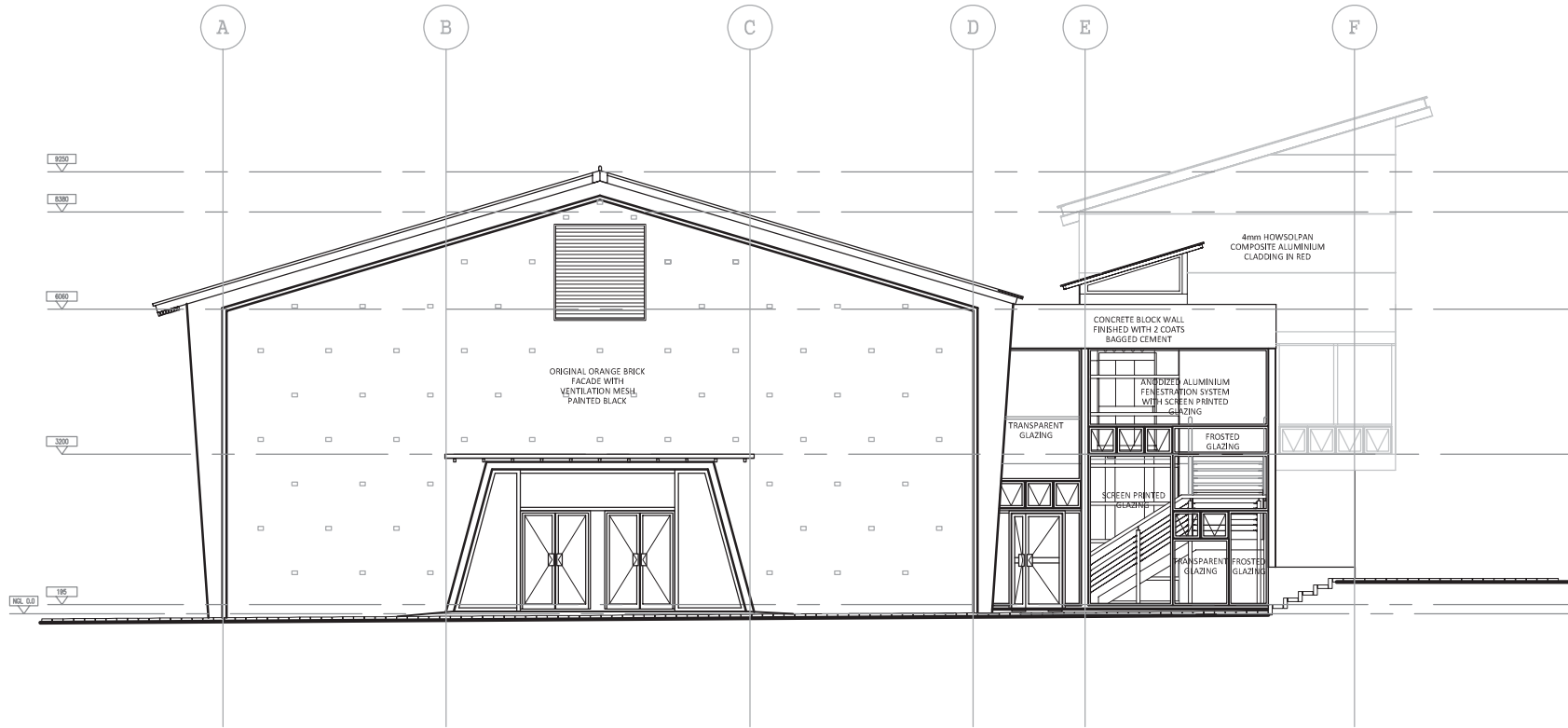
7.7 | SECTION 3

1 : 150



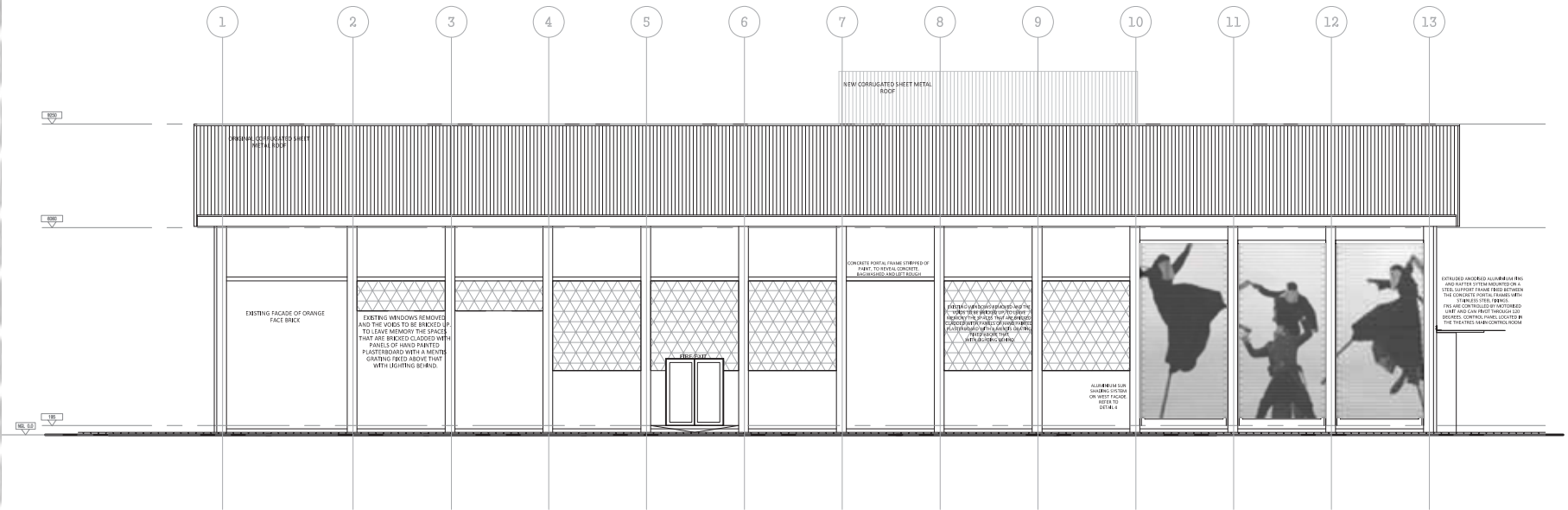
7.8 | SECTION 3

1 : 150



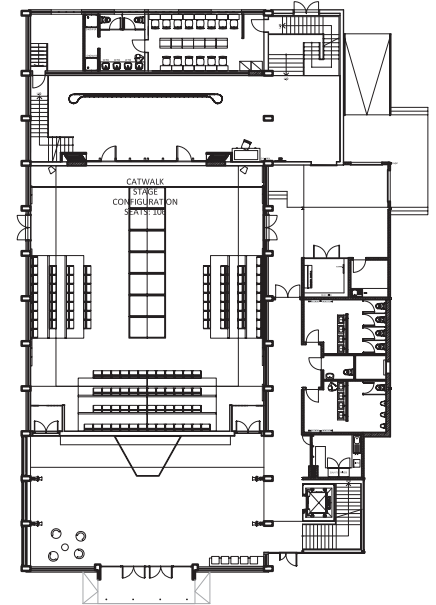
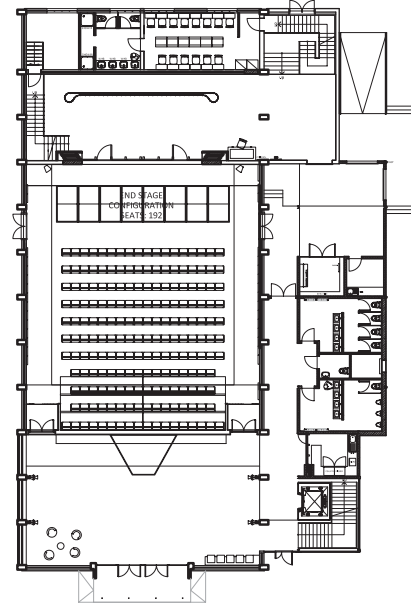
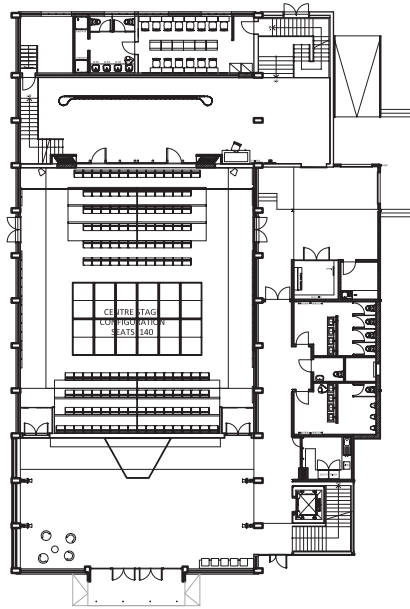
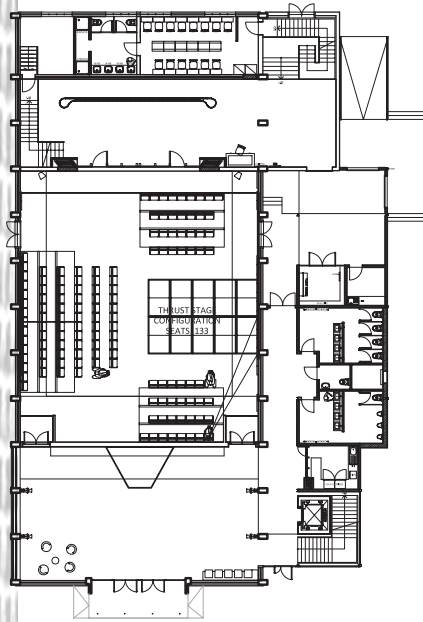
7.9 SOUTH ELEVATION

1 : 150



7.10 WEST ELEVATION

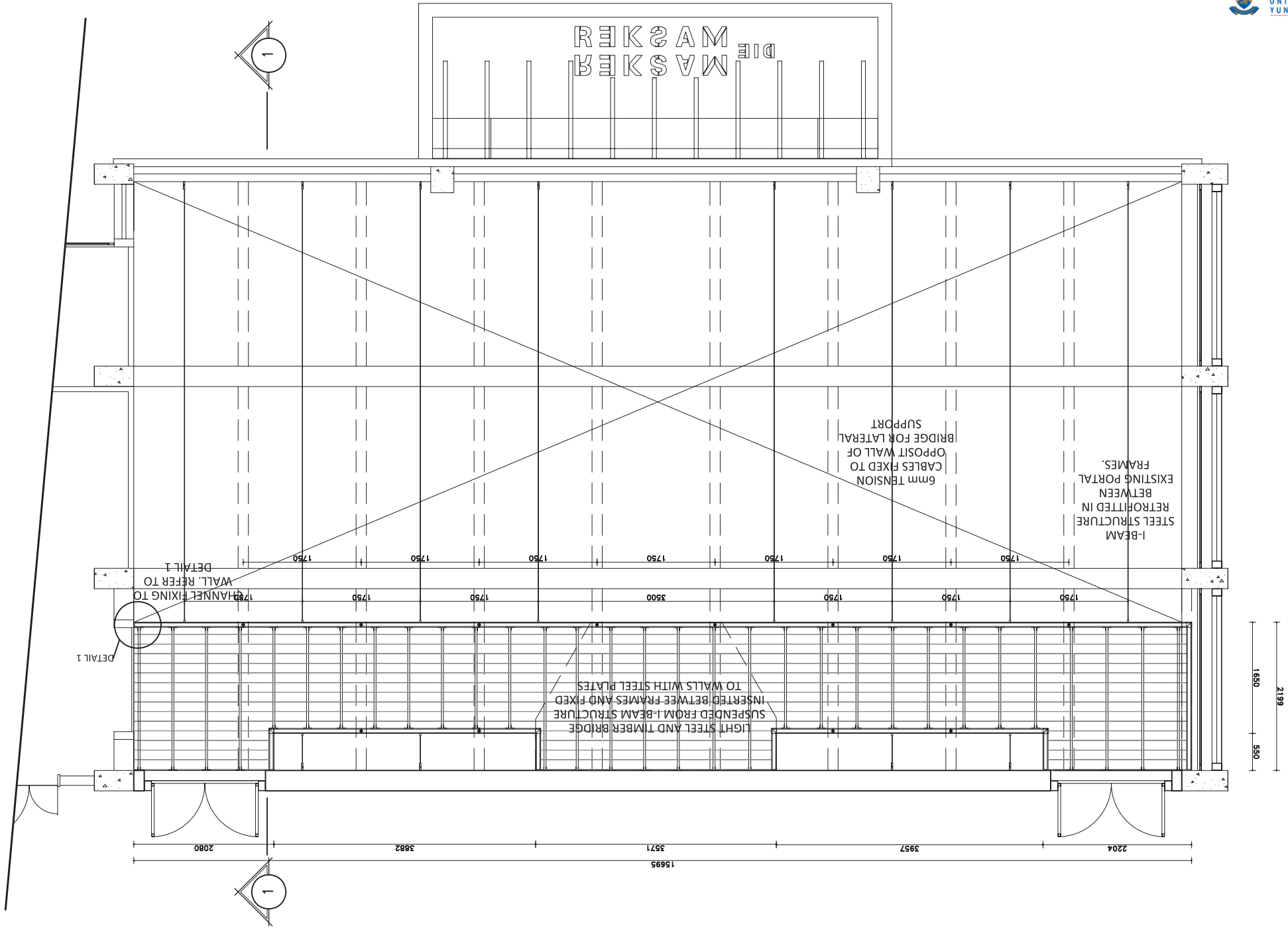
1 : 150

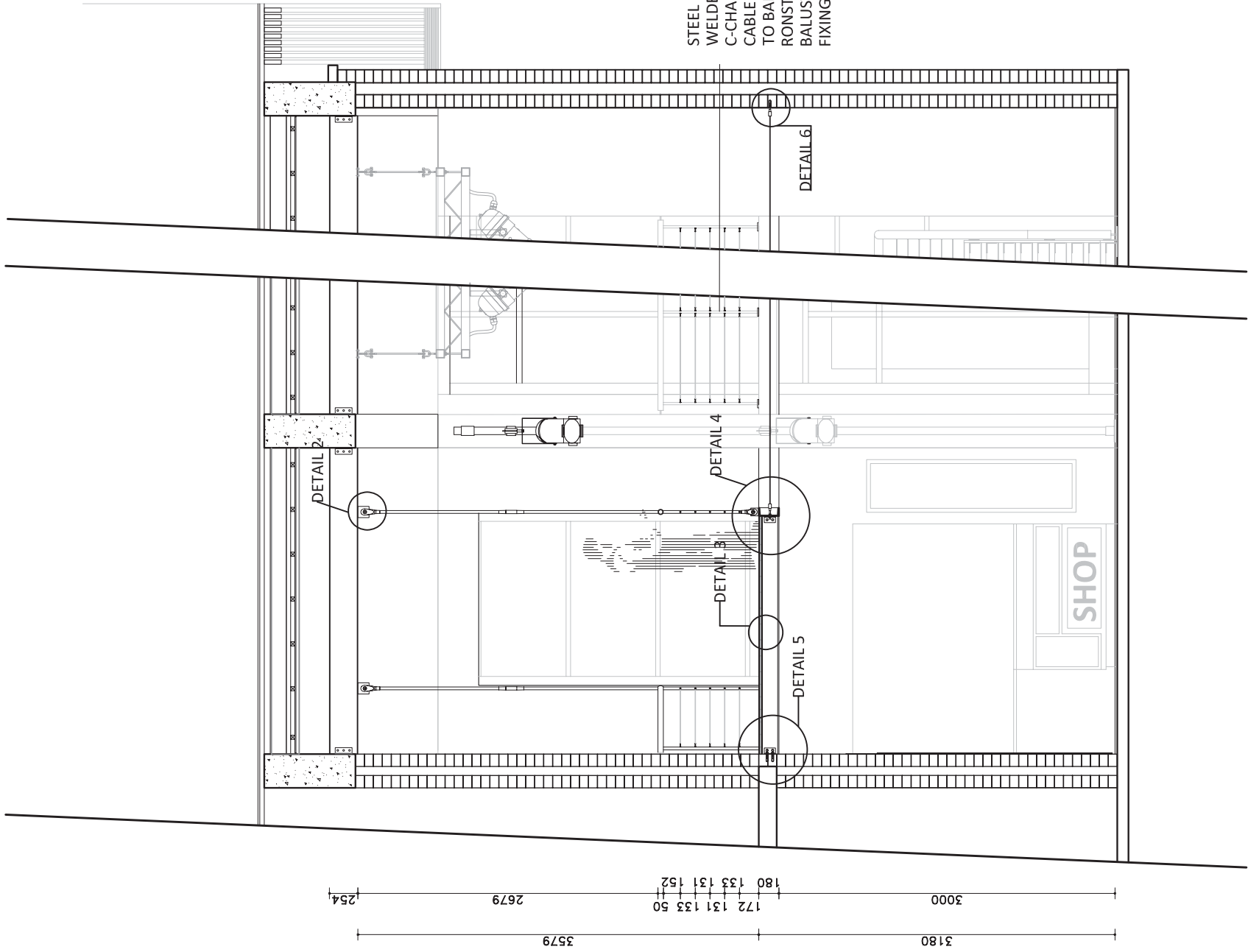


7.11 | THEATRE CONFIGURATIONS

1 : 250

7.12 | BRIDGE PLAN
1:50



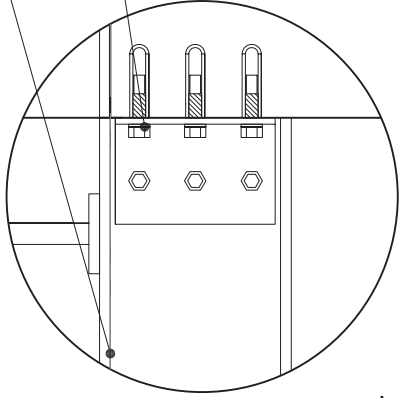


7.1.13 BRIDGE SECTION 1

1 : 50

180x89x18mm STEEL CHANNEL FIXED TO
END WALLS AND SUSPENDED FROM ROOF
STRUCTURE ABOVE WITH SUSPENSION RODS

150x100x5mm BOLTED TO CHANNEL
ANGLES ON EITHER SIDE
WITH 3xM12 FRICTION GRIP BOLTS.
ANGLE FIXED INTO WALL WITH 9mm RAWL BOLT



DETAIL 1
1:5

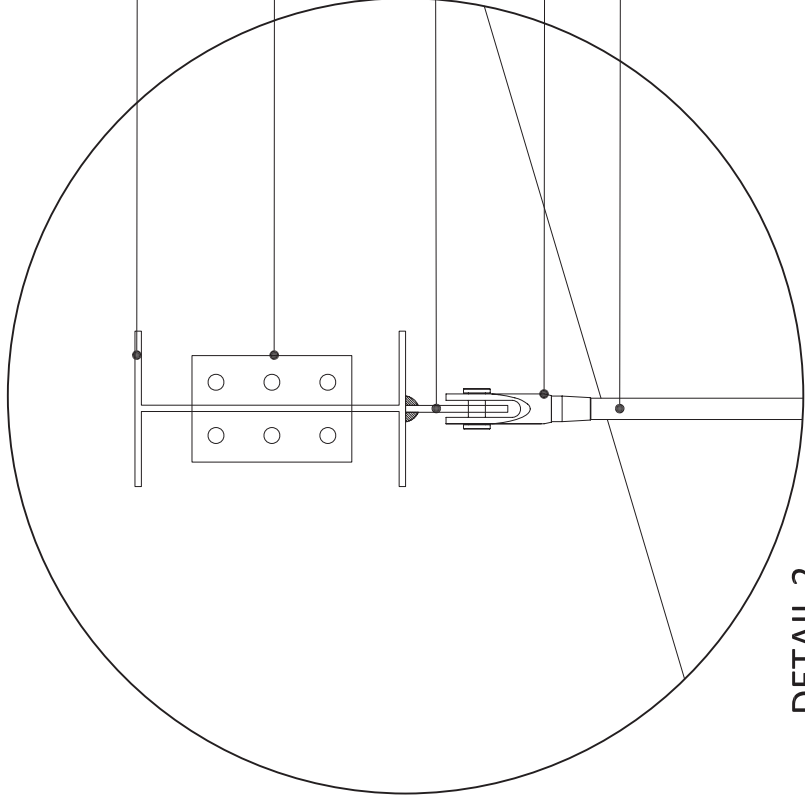
254x146x10mm I-BEAM SECTION
RETROFITTED BETWEEN THE
EXISTING CONCRETE PORTAL
FRAMES.

STEEL PLATE FIXING TO I-BEAM TO
PORTAL FRAME.

60x60x10mm FLATBAR WELDED TO
I-BEAM STRUCTURE FIXED BETWEEN
PORTAL FRAM STRUCTURE

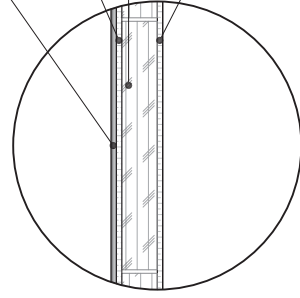
RONSTAN ROD/FORK CLIPPED
TO STEEL FIN

RONASTAN S460 STAINLESS
STEEL ROD OF
25mm DIAMETER

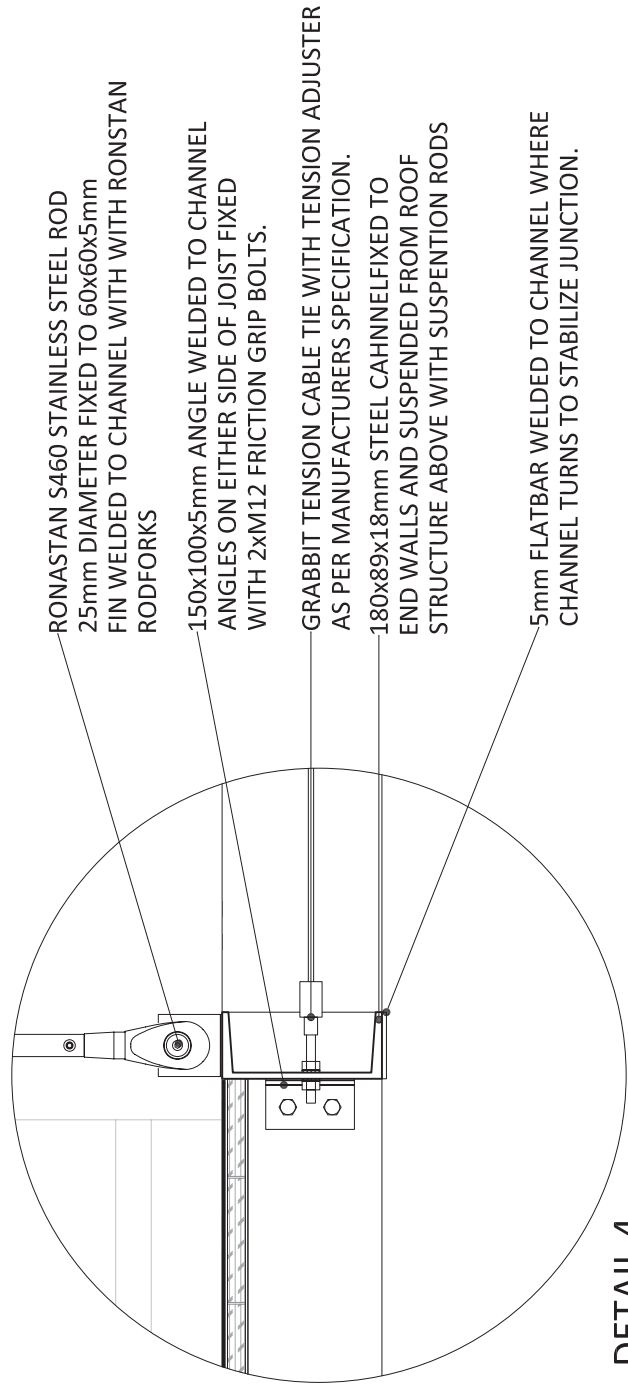


DETAIL 2
1:5

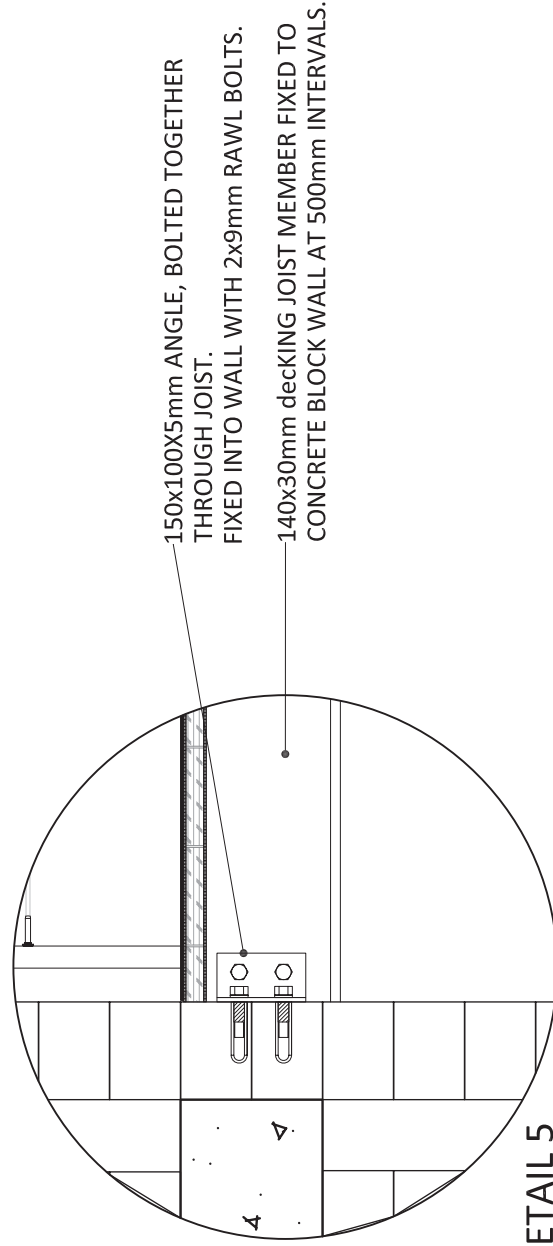
3mm HARLEQUIN STUDIO FLOOR COVERING, BLACK.
COMPLEX VINYL AND FOAM CONSTRUCTION
SOFTENS STEPS AND DECREASES SOUND.



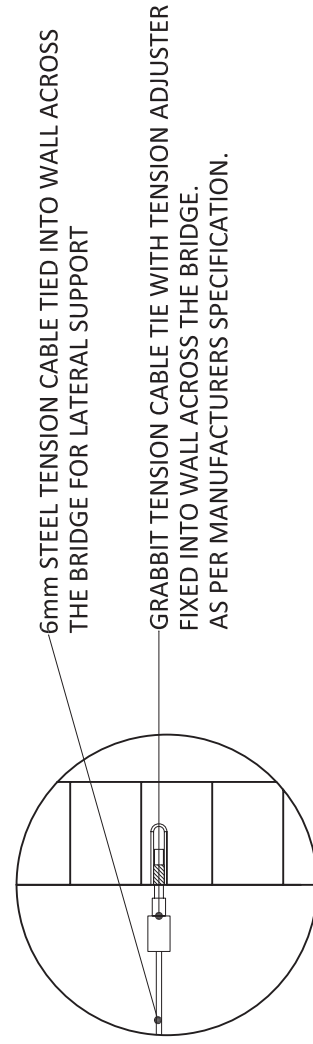
DETAIL 3
1:2



DETAIL 4
1:5



DETAIL 5
1:5



DETAIL 6
1:5