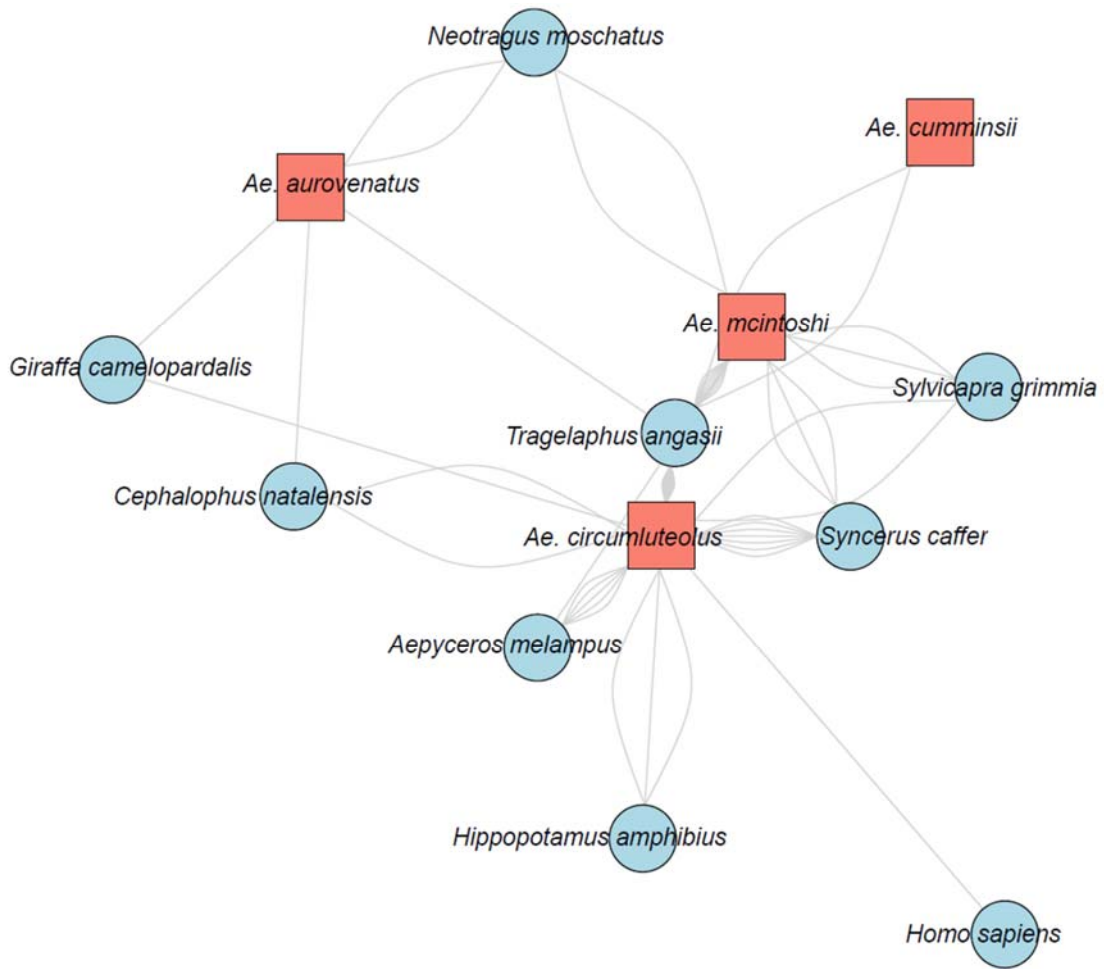
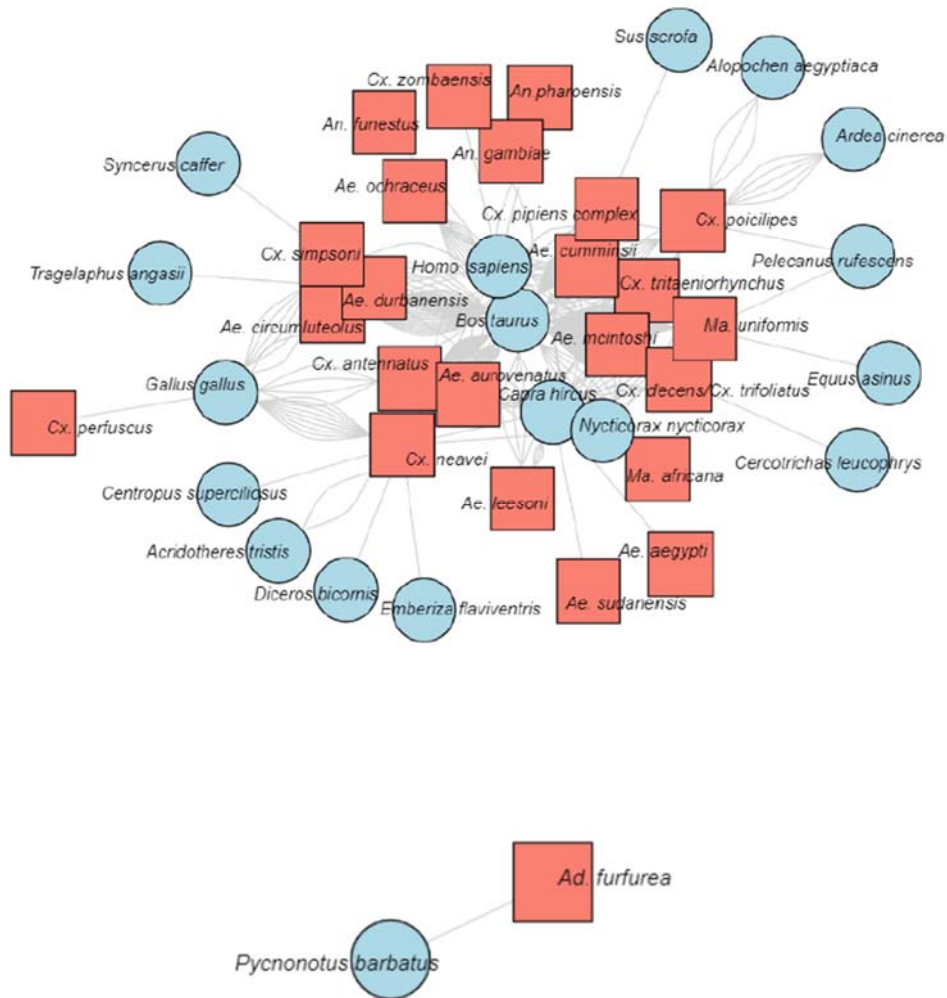


## Supplementary materials

### A) Reserve



B) Rural



**Additional file 1: Figure S1.** Host-biting networks for A) reserve network and B) rural network of mosquitoes and their vertebrate hosts from the north-eastern KZN. The mosquito species are indicated on the salmon-coloured squares and the hosts on the blue circles. The mosquitoes were collected from November 2019 – February 2023.