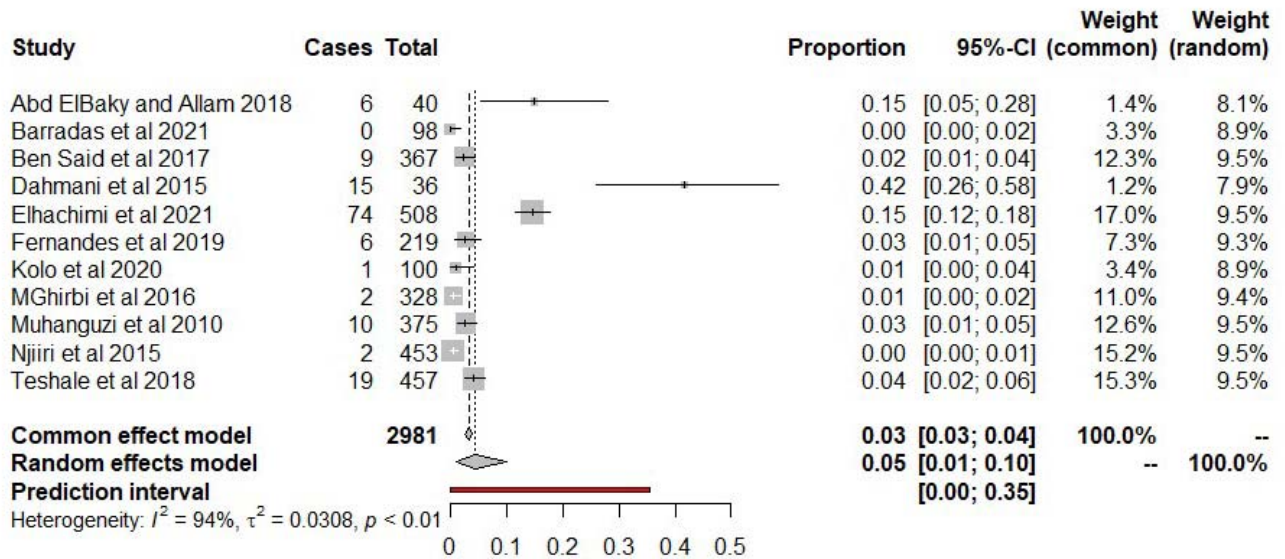
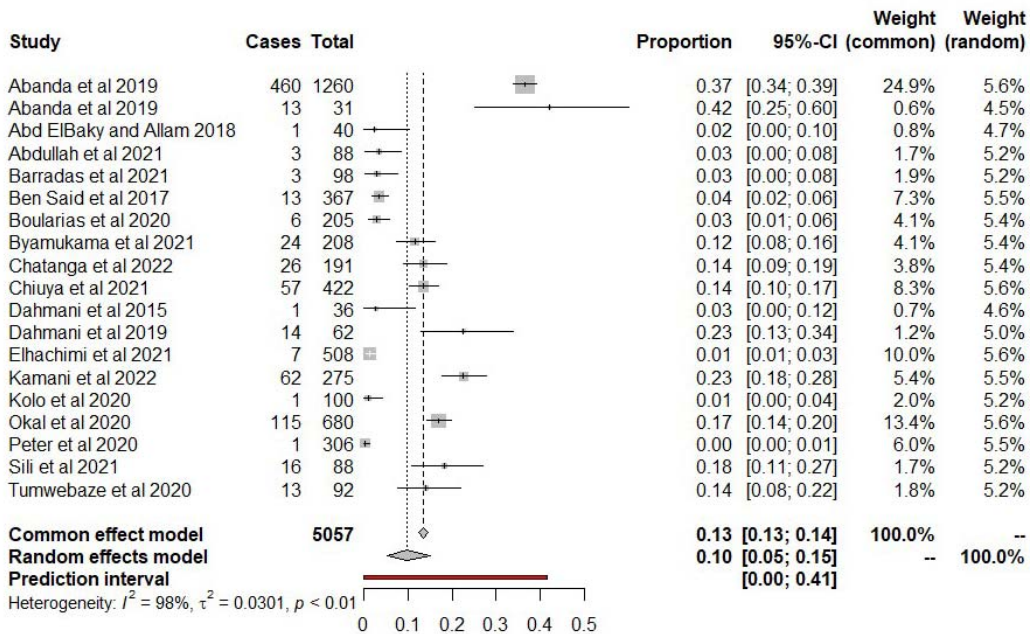


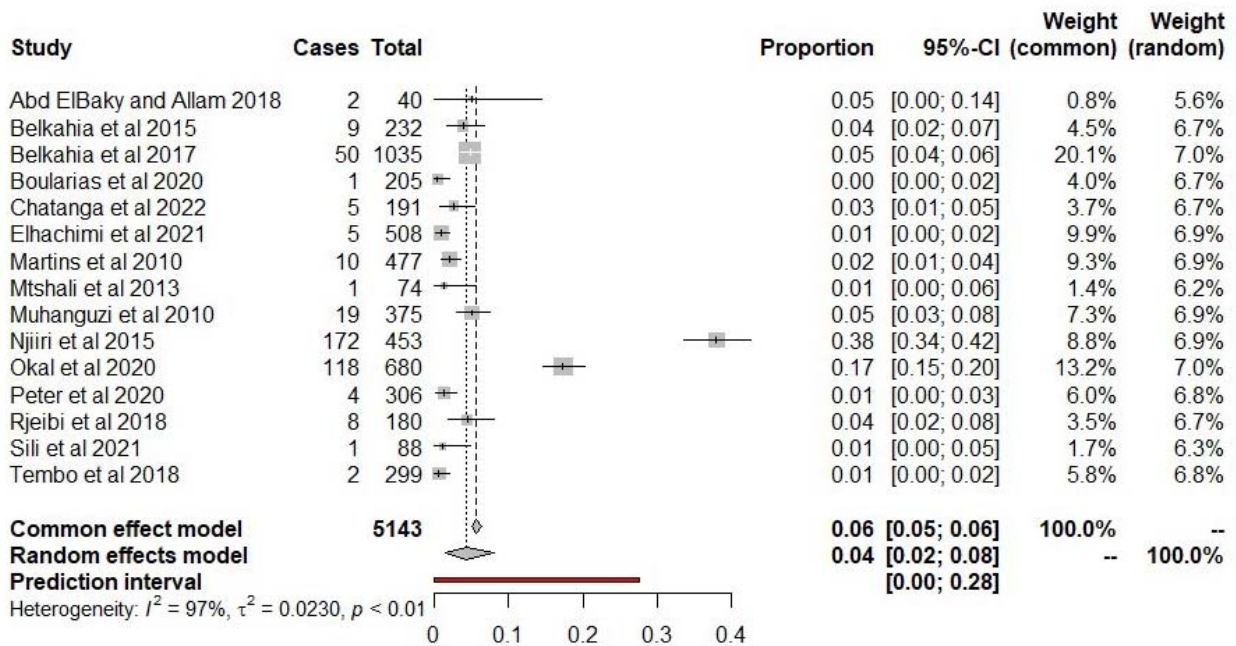
S1 Figure B. Forest plot of 26 studies included in a mixed-effects model for the prevalence of *Anaplasma centrale* amongst cattle in Africa, from 1970 to 2022. The diamond represents the summarised prevalence. The horizontal lines and grey boxes represent the 95% confidence interval and weighed prevalence, respectively for each included study. Shorter horizontal lines suggest better precision of the study results. “Total” represents the number cattle tested in a study, “Cases” represents the number of cattle that tested positive using the laboratory methods, while “Proportion” is the “Cases” divided by the “Total”. The weights that each study contributes to the summarised effect size, for both fixed and random effects models, are shown as percentages in the last two columns. Meta-analysis was conducted using “metafor” and “meta” packages in R version 4.3.2 (RCore Team, 2023).



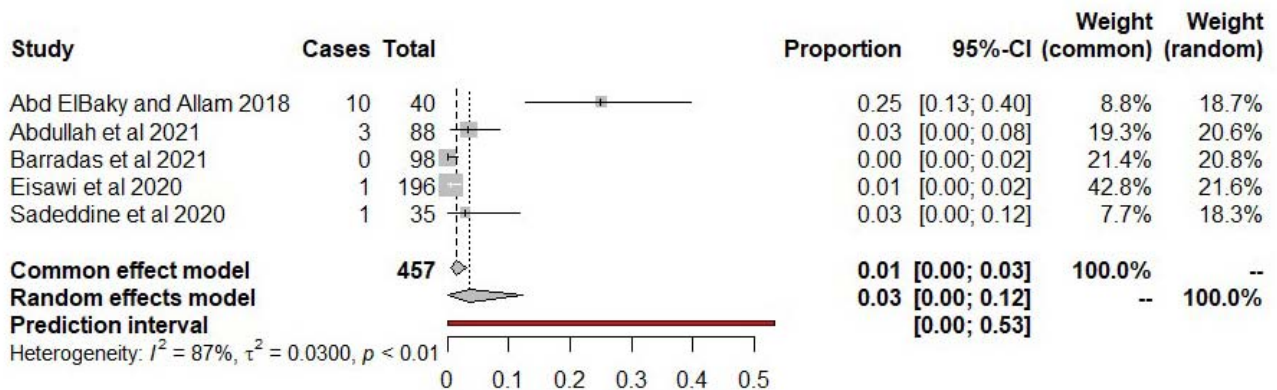
S1 Figure C. Forest plot of 11 studies included in a mixed-effects model for the prevalence of *Anaplasma phagocytophilum* amongst cattle in Africa, from 1970 to 2022.



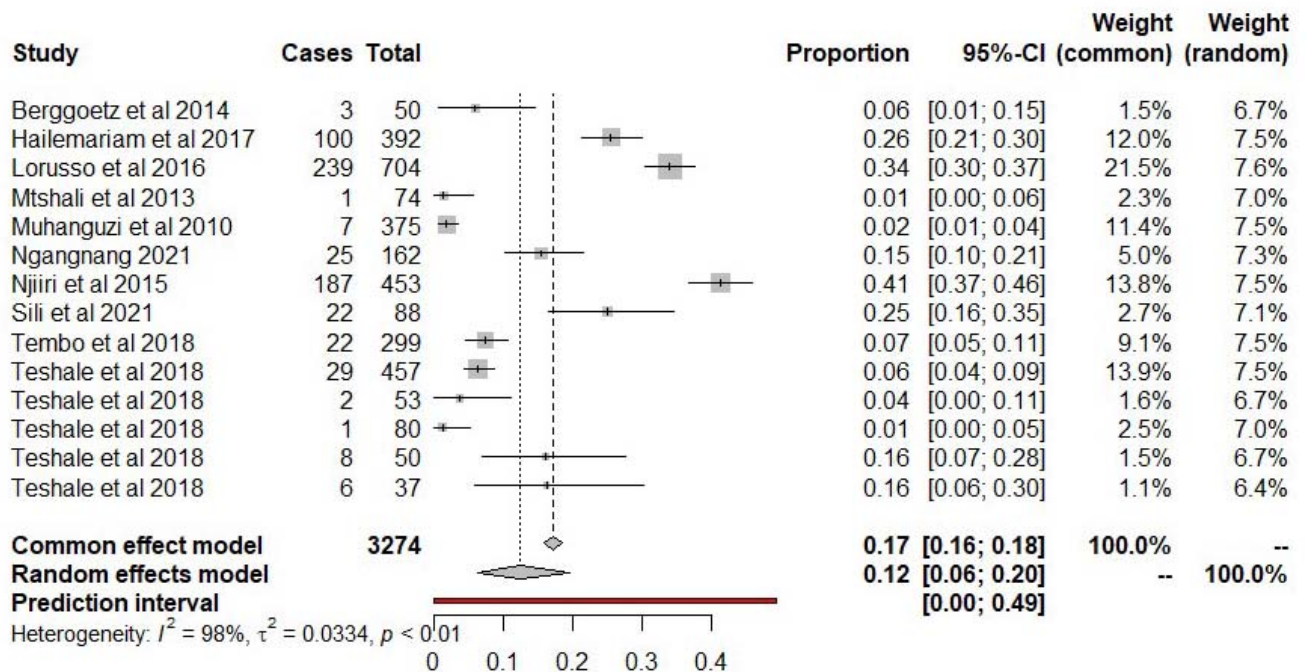
S1 Figure D. Forest plot of 19 studies included in a mixed-effects model for the prevalence of *Anaplasma platys* amongst cattle in Africa, from 1970 to 2022.



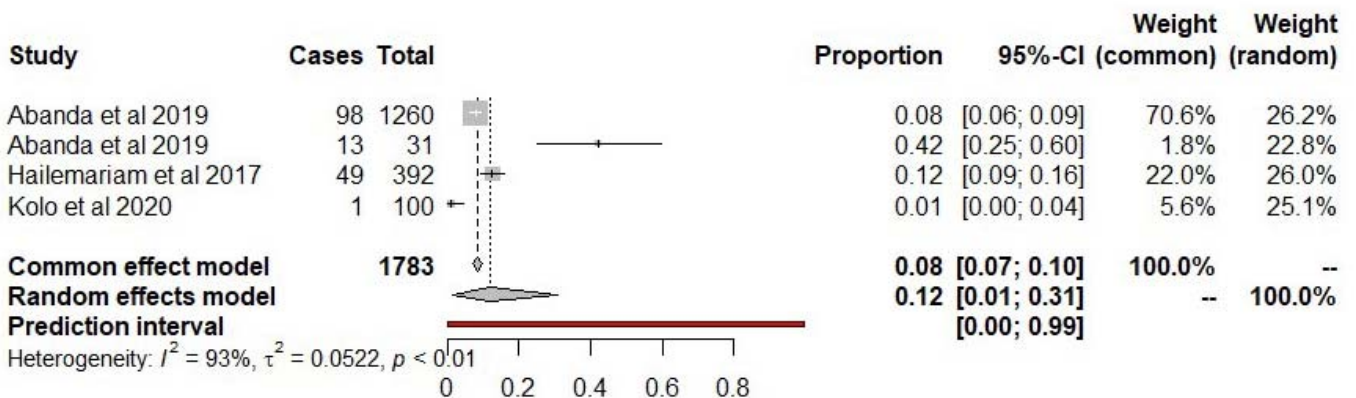
S1 Figure E. Forest plot of 15 studies included in a mixed-effects model for the prevalence of *Anaplasma bovis* amongst cattle in Africa, from 1970 to 2022.



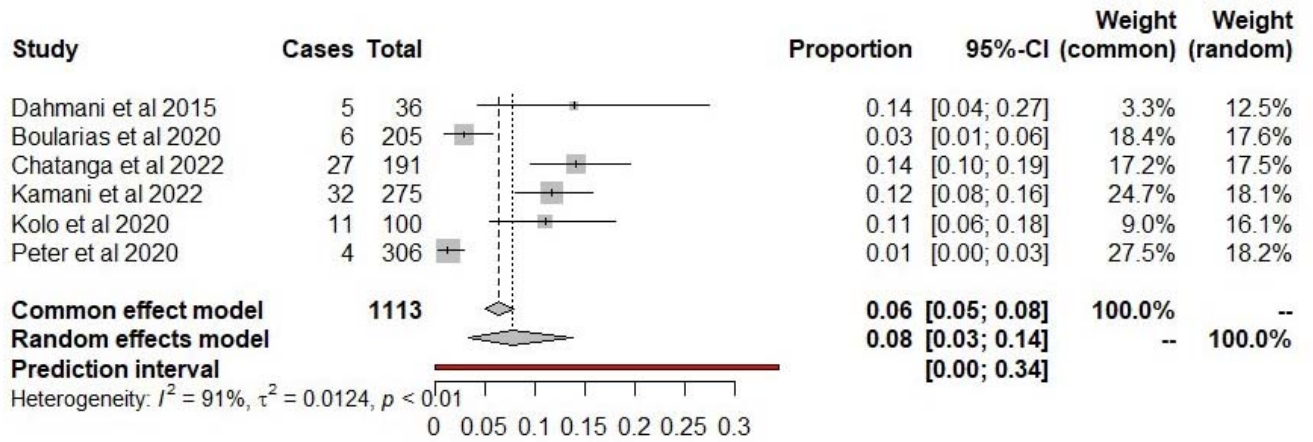
S1 Figure F. Forest plot of 5 studies included in a mixed-effects model for the prevalence of *Anaplasma ovis* amongst cattle in Africa, from 1970 to 2022.



S1 Figure G. Forest plot of 14 studies included in a mixed-effects model for the prevalence of *Anaplasma* sp. Omatjenne amongst cattle in Africa, from 1970 to 2022.



S1 Figure H. Forest plot of 4 studies included in a mixed-effects model for the prevalence of *Anaplasma* sp. Hadesa amongst cattle in Africa, from 1970 to 2022.



S1 Figure I. Forest plot of 6 studies included in a mixed-effects model for the prevalence of *Anaplasma* sp. amongst cattle in Africa, from 1970 to 2022.