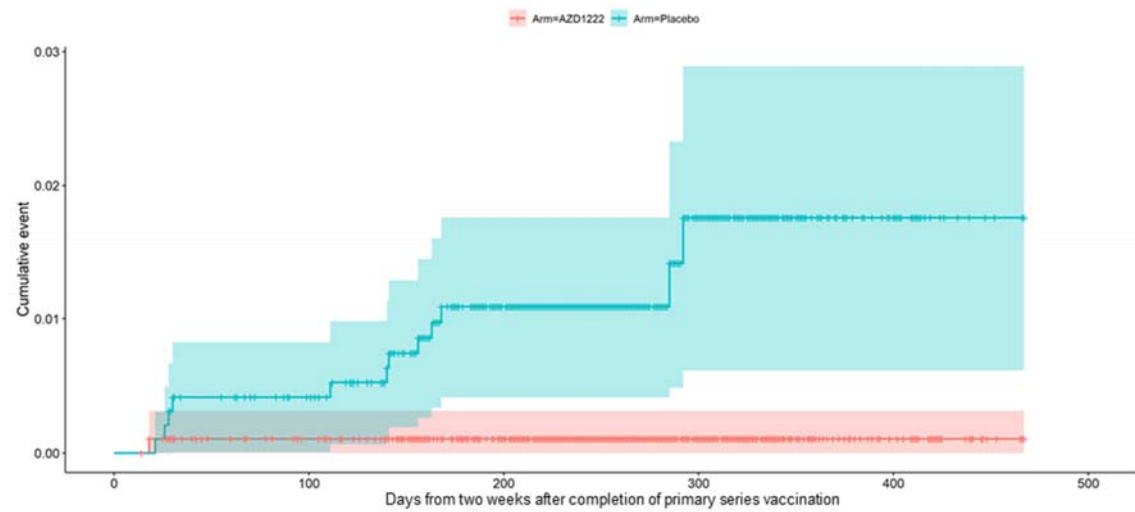


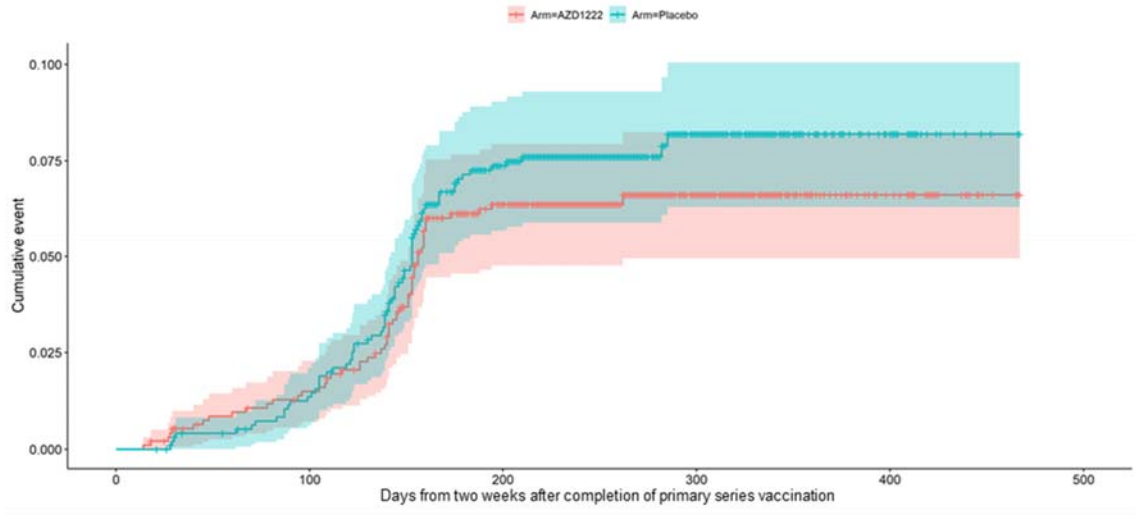
Supplementary Figures

Supplementary Fig. 1. Sensitivity analysis of cumulative incidence over time for any SARS-CoV-2 infection (includes both asymptomatic and symptomatic illness), due to wild type (a), Beta (b) and Delta (c) variants. Infections pre-October 2020 were assigned a wild type classification, between October 2020–April 2021 were assigned Beta classification and between May–November 2021 were assigned Delta classification.

a)



b)



c)

