



# Opportunities to improve goat production and food security in Botswana through forage nutrition and the use of supplemental feeds

Andrew S. Cooke<sup>1,2</sup> · Honest Machezano<sup>3,4</sup> · Javier Ventura-Cordero<sup>5,6</sup> · Aranzazu Louro-Lopez<sup>2</sup> · Virgil Joseph<sup>3</sup> · Lovemore C. Gwiriri<sup>2,7</sup> · Taro Takahashi<sup>2,8</sup> · Eric R. Morgan<sup>6</sup> · Michael R. F. Lee<sup>2,8,9</sup> · Casper Nyamukondiwa<sup>3,10</sup>

Received: 22 September 2023 / Accepted: 15 April 2024 / Published online: 7 May 2024  
© The Author(s) 2024

## Abstract

Goats fulfil a central role in food and nutritional security across Africa with over half of households owning or rearing goats in rural areas. However, goat performance is poor and mortality high. This study assessed the nutritional quality of commonly used feeds and proposes feed-baskets to enhance goat nutrition and health. Feeds were collected from 11 areas within the Central District of Botswana, and macronutrient analyses were conducted, including crude protein, fibre fractions, ash, and metabolizable energy (ME). Forage nutrition was compared across seasons and soil types. Additionally, seasonal supplementation trials were conducted to evaluate consumption rates of various supplements, including crop residues, pellets, *Lablab purpureus*, and *Dichrostachys cinerea*. Each supplement was provided ad libitum for a 24-h period, and consumption rates determined. Findings revealed significant differences in nutrition among various feed sources, across seasons, and in relation to soil types ( $p < 0.001$ ). Consumption rates of supplements were higher during the dry season, possibly due to reduced forage availability. Supplement consumption rates varied across supplement type, with crop residues accounting for approximately 1% of dry matter intake, compared to up to 45% for pellets, 13% for *L. purpureus*, and 15% for *D. cinerea*. While wet season feed baskets exhibited higher ME values compared to dry-season feed-baskets, the relative impact of supplementation was more pronounced during the dry season. These results highlight the potential for optimizing goat diets through improved grazing and browsing management, especially during the reduced nutritional availability in the dry season in Botswana. Such diet optimisation may improve goat health and productivity, which may positively impact the food and financial security of smallholders by providing both increased yields and increased resilience. Importantly, rural communities can experience some of the lowest food security levels in the region. The interventions explored in this study utilise natural capital, often freely available, which can be deployed through existing husbandry systems, potentially making them accessible and practical to smallholders.

**Keywords** Livestock · Goats · Nutrition · Agriculture · Ruminants · Smallholder · Africa

## 1 Introduction

Across Sub-Saharan Africa (SSA), goats play vital nutritional, socio-economic, and cultural roles, underpinning food security for millions of people. This is especially true in rural communities where more than half of households own or rear goats in some capacity (Manirakiza et al., 2020), making it one of the most common and ubiquitous forms of agriculture, with food security being identified as a key reason for goat ownership (Wodajo et al., 2020). The goat population in Botswana is distributed across the country and is estimated to include approximately 1.4 million

head (Mataveia et al., 2021), nearly exclusively reared by smallholders (Burgess, 2005), making it the most popular form of livestock (Bolowe et al., 2022). Goats contribute to income, food, and nutritional security through their ability to convert and store nutrients from low-value forage (graze and browse), fodder, industrial by-products, and biomass waste streams, which would otherwise be inaccessible to humans, into meat and milk rich in micronutrients. In Botswana, 29% of the population is reportedly undernourished and this appears to be increasing amidst climate and biotic shocks (The World Bank, 2019a). Conversely, food insecurity (lack of available food) is slightly better than the SSA average with a rate 50.8% in Botswana compared to the SSA mean of 59.5% (The World Bank,

Extended author information available on the last page of the article

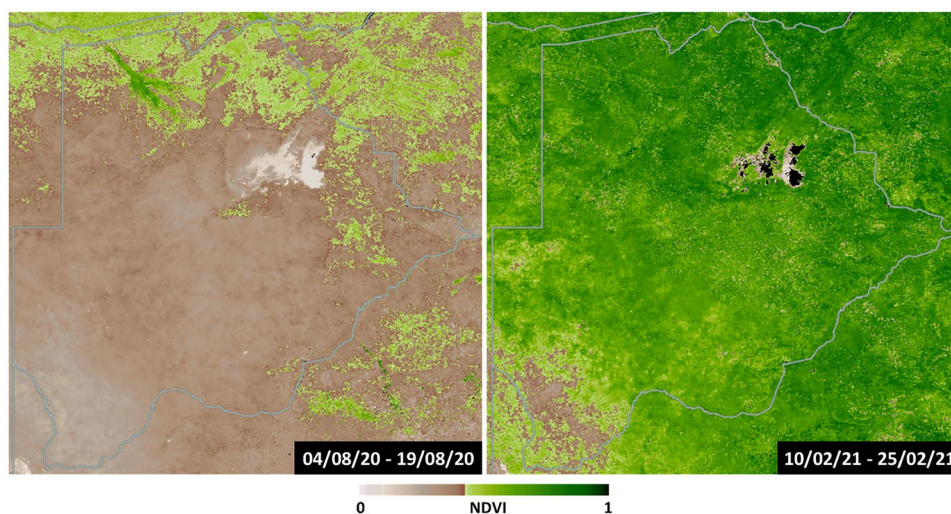
2019b, c). This disparity suggests that nutritional quality is an issue, which could be improved by greater access to meat and milk from livestock for the most vulnerable and food insecure communities. Given the ubiquity of goats across the region, interventions in goat production systems have the potential to have broad reaching benefits towards the food security of some of those most vulnerable communities in the region.

Goat production is predominantly extensively managed through communal rangeland forage grazing during the day and overnight kraaling, i.e. protective enclosure using thorn brush or other fencing (Walker et al., 2015). Agropastoral communal forage grazing in the central region is supported by hard-velde open bush savanna dominant on low fertility ferric luvisol sandy soils and moderately low fertility sandy loams (Pule-Meulenber & Dakota, 2009). Typical rangeland goat production systems consist of relatively small household goat herd sizes (mean 21 goats per household), with a low off-take rate of 7.3% and a high mortality rate of 23.3% (Statistics Botswana, 2017). The most commonly cited reasons for owning goats are for cash (84%), followed by meat (58%), and milk (42%) (Bolowe et al., 2022; Monau et al., 2017). Therefore the financial benefits of rearing goats fall into two main categories, cash and insurance (Gwiriri et al., 2023; Kaumbata et al., 2020). The selling of meat, milk and live goats can be an important form of household income. Goat ownership can also provide resilience through the ability to sell or slaughter an animal in times of hardships. Nsoso et al. (2004) reported that farmers in Botswana generally opted not to sell stock regularly, but to use goats as a safety net or insurance, selling only when financial needs necessitated.

Broadly, Botswana has two distinct seasons, the wet season (summer and autumn - November to April) and dry season (winter and spring - May to October) and the quantity and quality of fodder varies with the seasons (Fig. 1) (Naumann et al., 2017; Setshogo et al., 2011). Rainfall in the wet season aids plant growth, especially in herbaceous species, leading to a relative abundance and diversity of forage, with preferential nutritional profiles. During the wet season, goats are typically shepherded to grazing land in the day where they can consume a mix of browse, herbaceous plants, and pasture. At night, they are enclosed in a kraal (to prevent them from consuming crops and to prevent theft and predation) typically with little or no access to food or water. In the dry season goats roam more freely, predominantly on browse species, and are often not kraaled at night (highlighting that kraaling may predominantly be to protect crops). During the dry season, herbaceous plants significantly die back and forage availability skews towards browse species (Omphile et al., 2005), creating a shortage of feed and drop in nutrition availability and quality (Cooke et al., 2023a, b). The high costs of commercial supplementary feeds limit farmers' ability to mitigate this. Nutritional assessment of alternative low cost, locally available supplementary feeds in arid environments thus aids in appropriate choices and utilization of the available feed resources for dry season strategic supplementation to alleviate nutritional deficiency related problems in goats (Aganga & Autlwtse, 2000).

The potential of goat enterprises has triggered several SSA governments to initiate policies that encourage investment in improving small stock-production to reduce poverty while simultaneously improving food and nutritional resilience. The government of Botswana has committed significant financial resources in small ruminants,

**Fig. 1** Normalised Difference Vegetation Index (NDVI) maps of Botswana during the dry season (left) and wet Season (right). Maps are 16-day NDVI averages. Data taken from NASA Worldview (NASA, 2022)



particularly goats, through programmes such as the Livestock Management and Infrastructure Development (LIMID) program (Ministry of Agriculture, 2019) and the Remote Area Dweller Program (RADP) (Ministry of Local Government & Rural Development, 2009). Despite such investments, the productivity of goats in Botswana and SSA at large remain low due to poor nutrition, disease (e.g., gastrointestinal nematodes), and abiotic stress (e.g., frequent droughts), as well as the combined effects of such factors (Monau et al., 2017). Thus, whilst productivity is dependent on several factors, it is underpinned by optimal nutrition and disease control. By extension, improving the health and productivity of individual goats and herds could improve the income, food and nutrition security resilience of these households and communities through associated household economic return or nourishment.

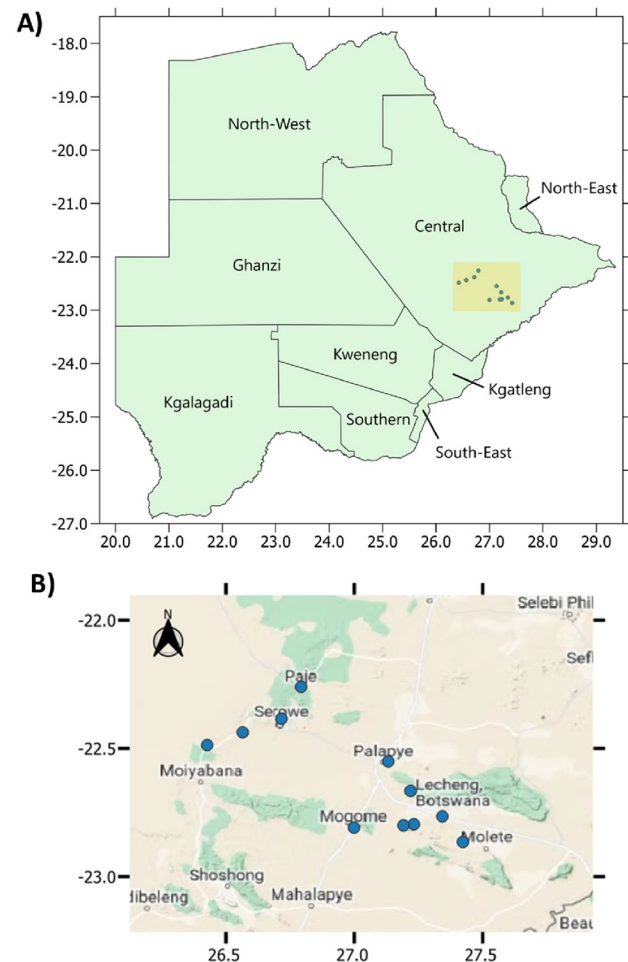
The objectives of this study were to:

- Quantify the nutritional profile of cultivated and naturally available forages and feeds in the Central District of Botswana.
- Assess the potential consumption and nutritional contribution of dietary supplements, currently used by farmers, for goat nutrition during periods where animals are kraaled.
- Use the information obtained from objectives 1 and 2 to develop and assess theoretical feed-baskets for both the dry and wet seasons to optimise nutrition availability and quality based on available resources.

## 2 Methods

### 2.1 Forage collection and analysis

A variety of heavily grazed forage samples ( $n=244$ ) were collected in the most frequently grazed areas through snowball sampling (by way of referrals from one farmer to others, referrals from those and so on) on roughly 200m<sup>2</sup> estimate quadrants depending on the size of each grazing land across the Central District of Botswana between January 2020 and October 2021. Samples came from 21 farms/smallholdings, spanning 11 villages (Lecheng, Maape, Mhalapitsa, Mogorosi, Paje, Palapye, Pilikewe, Radisele, Ramokgnami, Serowe, Thabala) (Fig. 2). Forages were selected based on farmer recollection of goats consuming them and/or physical evidence of goat grazing. The one exception to this was *Viscum* sp. which whilst not reportedly used by farmers in this study, has been reported to be used elsewhere (Madibela et al., 2000) and shows some promise as a supplement (Madibela et al., 2010; Moncho et al., 2012). Farms were classified by their underlying soil type of either ‘hardveld’ (rocky)



**Fig. 2** **A** Map of Botswana including districts. Approximate study area highlighted in yellow with individual locales in blue dots. Axes refer to latitude and longitude. Map created using QGIS 3.26.1 (QGIS, 2022). **B** Approximate location of sites. Axes refer to latitude and longitude. Map created using QGIS 3.26.1 with base-map obtained through Google Maps (Google, 2021; QGIS, 2022)

or ‘sandveld’ (sandy) (Panagos et al., 2011). Collection dates were recorded allowing for samples to be designated as from either the dry season or wet season. Where possible, species or genus information was recorded as identified plant science specialist at the Botswana International University of Science and Technology. Additionally, forages were given one of three classifications:

**Browse** – plants with hard stems such as woody trees and shrubs.

**Herbaceous** – non-woody species with soft stems, such as grasses and forbs.

**Pasture** – This refers to flat and low-lying plains, dominated by grasses. Such areas are often under communal livestock grazing. Samples designated ‘pasture’ were not

speciated and were general cuttings of a quadrat within this area and were thus typically mixes of herbaceous species.

For herbaceous plants, the aerial parts (stems, leaves, stolons, flowers, fruits and/or seeds) were collected by cutting the plant stem from its base using handheld garden shears. For browse, only the browsed aerial plant parts were collected; depending on the plant species and associated browsing preference of the goats, other specific plant parts such as tender shoots, pods or flowering parts were specifically collected particularly for *Dichrostachys cinerea* and different *Acacia* species. Over four repeat visits, samples were collected from the same grazing area unless farmers indicated otherwise, then the new site would be sampled. During the dry season, plant supplements used by farmers were collected directly from the feeding troughs or from the storage areas. In each case, sub samples from different sampling points were mixed to make a composite sample for each type of feed.

## 2.2 Chemical analyses

Samples were weighed before being oven-dried (60 °C for 48 h) weighed again, vacuum packed and shipped to the UK where they were freeze dried to meet import and quarantine requirements and then ground to <2 mm particle size for nutritional analysis. Loss on ignition was conducted (0.5 g, 540 °C, 6 h) to determine ash content. Crude protein (CP) was determined as 6.25 times nitrogen content, as determined by the Dumas technique (Ebeling, 1968). Three fibre fractions were determined, neutral detergent fibre (NDF), acid detergent fibre (ADF), and acid detergent lignin (ADL) (Goering & Soest, 1970). Metabolizable energy (ME) concentrations (ME MJ kg<sup>-1</sup> DM) were estimated as per Minson (1984):  $ME = 10.738 + 0.161CP(\%) - 0.131ADF(\%)$ . This predictive equation was chosen as it was derived from results of five tropical (*Digitaria* sp.) grasses and had recently been determined by Lwin et al. (2022) to have the best predictive value (of 23 tested) for ME of *Sorghum bicolor*, showing that the equation's accuracy stood up across species.

Variations in forage ME concentration were compared across three plants found to be abundant across time and space: the trees *Boscia* sp. and *Terminalia* sp., and the

hemi-parasitic mistletoe shrub *Viscum* sp. An ANOVA was conducted comparing ME concentrations across the factors: species (as above), season (wet season and dry season) and soil types (Hardveld and Sandveld), without interactions in those terms and location/farm included as a random effect. Post-hoc Tukey testing determined differences between groups. Significance was set at  $\alpha = 0.05$ . Analyses were performed in R and R Studio (R Core Team, 2021; R Studio Team, 2020).

## 2.3 Supplementation trials

Supplementation trials were conducted to assess the consumption rates of supplemented feeds, which is pertinent to their potential. This was conducted at two timepoints across multiple farms in two villages, the first during the wet season at the end of March (30/03/21 to 31/03/21) and the second in the dry season at the end of July (27/07/21 to 30/07/21). In both seasons, the trials were run in a completely randomised block design (CRBD) with villages acting as blocks while the farmers were replicates and individual goats were pseudo replicates. Goats were penned as groups and were of native breeds (e.g. Tswana, Boer) (Table 1). During the wet season, trials were conducted across eight farms: four used a crop residue (mainly maize stover (*Zea mays*) with some salt and miscellaneous plant material) and four used commercial goat pellets (Luburn Voere<sup>®</sup>, Hartswater, South Africa). The pellets' composition on the label was stated as 12.9% protein, 0.7% urea, 1.5% fat, 12.9% fibre, 0.3% phosphorus and moisture content of 12.9%. During the dry season, four different supplements were tested in four villages: crop residues (as previously), *Lablab purpureus* beans, crushed pods of the leguminous tree *Dicrostachys cinerea* and commercial pellets, each replicated four times (four farmers). These supplements were chosen based on our presurvey results in the same areas and anecdotal evidence observed during other research activities as representing the most commonly available and accessible type of supplements used by farmers in these areas. Supplement samples underwent nutritional analysis as per forage samples above. Moisture content was calculated pre- and post- trial so that moisture loss could be accounted for in consumption rates and moisture/dry matter analysis then performed in the laboratory (60 °C for 48 h) to enable DMI determination.

**Table 1** For the supplementation trials, the number of goats, split by far, for each supplement and season

	Supplement	Total goats	n Goats by farm
Wet season	Mixed crop residue	69	A = 18, B = 10, C = 18, D = 23
	Commercial pellets	105	E = 22, F = 21, G = 20, H = 39,
Dry season	Mixed crop residue	72	I = 19, A = 18, B = 13, C = 22
	Commercial pellets	112	J = 29, K = 20, L = 36, D = 27
	Crushed pods, <i>Dicrostachys</i> sp pods	172	F = 59, H = 37, M = 51, G = 25
	Lablab	137	N = 57, E = 32, O = 28, P = 20

Letters represent an individual farm



Each trial was conducted in a similar manner: A weighed ration of the supplement (Table 2) was provided to the flock in the afternoon (when the goats were coming back to the kraal for the night) for the goats to consume until noon the next day (approx. 24 h). The supplement was therefore available after access to the basal diet, prior to kraaling, which constituted predominately herbaceous plants and browse during the dry season and pasture and browse during the wet season. No other feeds were available to the goats once kraaled. After this period, any remaining supplement was re-weighed (when the goats were released the next day) to assess how much had been consumed at herd level, which was then adjusted for moisture loss and consumption on a per animal basis calculated. However, as individual animal weights were not known, and each flock had a different composition, an adjustment factor was imposed. Goats were categorised into one of four categories based on their teeth: (1) Adult female (2) Adult male (3) Female kid (4) Male kid, with kids being < 1 year old. Mean weights for each of these categories were taken from (Katongole et al., 1996) and the mean of those four weights (25.35 kg) considered to be the weight of a typical goat (hereon referred to as a 'goat unit'). The mean weights of each category (as per Katongole et al. (1996)) was then calculated relative to that value, providing an adjustment factor (Table 3). These adjustment factors were then applied to the known group composition to allow for consumption to be calculated based relative to 'goat units'. Target DMI for goats was considered as 4% of liveweight (Freking & McDaniel, 2016), equating to 1.01 kg per goat unit per day.

## 2.4 Feed-basket formulation

Forage nutrition data and supplement trial results were used to assess numerous theoretical feed-baskets available to the goats. For the basal diet (browse species, herbaceous species, pasture, that had  $n > 1$  samples) and supplements, mean ME and CP concentrations were taken for each season (where available). Each feed-basket comprised a basal diet (Herbaceous and Browse, during the dry season; and Pasture and Browse, during the wet season) and supplementation (including a control with no supplementation).

**Table 2** Provision of supplements (kg, mean, on a per goat unit basis) dry weight of each supplement for the dry and wet season trials

	Dry season	Wet season
Crop residue	0.19 <sub>(0.05)</sub>	0.20 <sub>(0.07)</sub>
Pellets	0.66 <sub>(0.15)</sub>	0.75 <sub>(0.21)</sub>
<i>L. purpureus</i>	0.35 <sub>(0.14)</sub>	-
<i>D. cinerea</i> pods	0.27 <sub>(0.11)</sub>	-

Subscripted number in brackets is standard deviation

Basal diets were a varying ratio of the naturally available forage types at that time. During the wet season goats graze predominantly on the abundant pasture forages and on browse, consequently the basal diet was a ratio of the two from 100:0 to 0:100 in steps of  $\pm 20$ . For the dry season, the pasture plants die off, though some herbaceous species persist and can make up around 10–25% of total diet, thus the basal diet for this period was comprised of herbaceous and browse plants at ratios from 25:75 to 0:100 in steps of  $\pm 5$ . The contribution of the basal diet to the overall diet was adjusted to make way for supplementation. Supplement inclusion rates were set at the level of intake (as a proportion of DMI targets) observed in the supplement trials. *Viscum* sp. was also added as a theoretical supplement at a rate of 20.0% as per Madibela and Jansen (2003), despite not being tested directly in the feed trials. For each theoretical feed-basket (wet season:  $n = 24$ , dry season:  $n = 36$ ) the ME and CP concentrations of the formulated feed baskets were then calculated, as well as the ratio of CP to ME (CP:ME).

## 3 Results

### 3.1 Forage nutrition

There was a statistically significant difference in ME concentrations across the three forages *Boscia* sp., *Terminalia* sp. and *Viscum* sp. ( $F = 69.9$ ,  $p < 0.001$ ) (Table 4). Seasonal differences in nutritional composition were observed across the entire sample pool ( $F = 24.6.0$ ,  $p < 0.001$ ), with samples collected in the wet season yielding the highest ME concentrations (Fig. 3). However, this was less apparent intra-species with Tukey testing only showing a significance between season for *Terminalia* sp., though dry season ME concentrations were lower than in the wet season for both *Boscia* sp. and *Viscum* sp. Across these three species there was also a significant difference in ME based on the underlying soil type ( $F = 15.3$ ,  $p = 0.001$ ), with Sandveld soils yielding higher median ME concentrations than Highveld (Fig. 4) for all species. However, within each species, Tukey testing did not reveal a significant difference between soil types.

**Table 3** Adjustment factors to standardise consumption across different goat types

Category	Mean weight (kg)	Goat units
Female adult	28.99	1.14
Male adult	33.39	1.32
Female kid	19.64	0.78
Male kid	19.23	0.76

Typical weights taken from Katongole et al. (1996)

Table 4 Nutritional profiles of browse plants, herbaceous plants, and pasture samples during the dry season and wet season

	Nutrient concentration (% DM) (MJ Kg <sup>-1</sup> DM for ME)											
	Dry season						Wet season					
	Ash	CP	NDF	ADF	ADL	ME	Ash	CP	NDF	ADF	ADL	ME
<b>Browse</b>												
<i>Acacia</i> sp. <sup>1,5</sup>	9.4 <sub>(na)</sub>	12.3 <sub>(na)</sub>	48.6 <sub>(na)</sub>	31.1 <sub>(na)</sub>	10.4 <sub>(na)</sub>	8.6 <sub>(na)</sub>	7.0 <sub>(2.5)</sub>	23.4 <sub>(6.8)</sub>	26.7 <sub>(3.4)</sub>	12.7 <sub>(2.9)</sub>	11.0 <sub>(1.4)</sub>	-
<i>A. giraffe</i> pod husk <sup>1,0</sup>	3.8 <sub>(na)</sub>	9.8 <sub>(na)</sub>	51.0 <sub>(na)</sub>	34.0 <sub>(na)</sub>	9.1 <sub>(na)</sub>	7.9 <sub>(na)</sub>	-	-	-	-	-	-
<i>A. giraffe</i> seeds <sup>1,0</sup>	4.3 <sub>(na)</sub>	26.9 <sub>(na)</sub>	22.3 <sub>(na)</sub>	12.4 <sub>(na)</sub>	1.7 <sub>(na)</sub>	13.5 <sub>(na)</sub>	-	-	-	-	-	-
<i>Albizia anthelmintica</i> <sup>0,1</sup>	-	-	-	-	-	-	5.6 <sub>(na)</sub>	15.1 <sub>(na)</sub>	46.3 <sub>(na)</sub>	4.1 <sub>(na)</sub>	7.1 <sub>(na)</sub>	-
<i>Boscia</i> sp. <sup>14,22</sup>	10.5 <sub>(1.8)</sub>	15.7 <sub>(1.6)</sub>	40.5 <sub>(4.8)</sub>	23.7 <sub>(2.5)</sub>	9.4 <sub>(1.4)</sub>	10.0 <sub>(0.5)</sub>	8.8 <sub>(1.6)</sub>	17.8 <sub>(2.4)</sub>	26.9 <sub>(3.7)</sub>	10.0 <sub>(2.0)</sub>	10.1 <sub>(0.8)</sub>	-
<i>D. cinerea</i> <sup>1,1</sup>	6.0 <sub>(na)</sub>	18.6 <sub>(na)</sub>	44.5 <sub>(na)</sub>	30.2 <sub>(na)</sub>	9.7 <sub>(na)</sub>	9.8 <sub>(na)</sub>	4.6 <sub>(na)</sub>	15.9 <sub>(na)</sub>	29.7 <sub>(na)</sub>	11.7 <sub>(na)</sub>	9.4 <sub>(na)</sub>	-
<i>Grewia</i> sp. <sup>0,8</sup>	-	-	-	-	-	-	6.0 <sub>(0.6)</sub>	14.9 <sub>(2.2)</sub>	31.9 <sub>(3.5)</sub>	12.0 <sub>(2.3)</sub>	9.0 <sub>(0.8)</sub>	-
<i>Lippia javanica</i> <sup>0,1</sup>	-	-	-	-	-	-	8.7 <sub>(na)</sub>	14.0 <sub>(na)</sub>	21.1 <sub>(na)</sub>	7.8 <sub>(na)</sub>	10.2 <sub>(na)</sub>	-
<i>Moringa oleifera</i> <sup>0,1</sup>	-	-	-	-	-	-	9.7 <sub>(na)</sub>	26.4 <sub>(na)</sub>	15.5 <sub>(na)</sub>	4.1 <sub>(na)</sub>	13.0 <sub>(na)</sub>	-
<i>Senna italica</i> <sup>0,1</sup>	-	-	-	-	-	-	8.5 <sub>(na)</sub>	14.9 <sub>(na)</sub>	31.5 <sub>(na)</sub>	9.9 <sub>(na)</sub>	9.0 <sub>(na)</sub>	-
<i>Terminalia</i> sp. <sup>15,11</sup>	6.0 <sub>(2.0)</sub>	7.8 <sub>(1.7)</sub>	44.4 <sub>(3.8)</sub>	35.2 <sub>(3.7)</sub>	14.2 <sub>(2.5)</sub>	7.4 <sub>(0.7)</sub>	4.2 <sub>(0.6)</sub>	9.8 <sub>(2.2)</sub>	30.7 <sub>(7.8)</sub>	11.7 <sub>(6.6)</sub>	8.3 <sub>(0.9)</sub>	-
<i>Z. mucronata</i> <sup>0,3</sup>	-	-	-	-	-	-	7.9 <sub>(1.4)</sub>	15.9 <sub>(3.9)</sub>	25.5 <sub>(2.1)</sub>	9.1 <sub>(0.3)</sub>	10.0 <sub>(0.8)</sub>	-
<b>Herbaceous</b>												
<i>A. hispidium</i> <sup>0,2</sup>	-	-	-	-	-	-	11.9 <sub>(1.7)</sub>	25.9 <sub>(1.9)</sub>	20.3 <sub>(3.5)</sub>	6.8 <sub>(1.5)</sub>	12.2 <sub>(0.8)</sub>	-
<i>L. purpureus</i> <sup>4,0</sup>	9.0 <sub>(1.2)</sub>	18.2 <sub>(3.1)</sub>	36.9 <sub>(6.6)</sub>	24.1 <sub>(4.9)</sub>	5.6 <sub>(1.3)</sub>	10.5 <sub>(1.0)</sub>	-	-	-	-	-	-
<i>L. purpureus commercial mix</i> <sup>1,0</sup>	11.1 <sub>(na)</sub>	18.8 <sub>(na)</sub>	42.1 <sub>(na)</sub>	31.4 <sub>(na)</sub>	6.0 <sub>(na)</sub>	9.7 <sub>(na)</sub>	-	-	-	-	-	-
<i>T. terrestris</i> <sup>0,3</sup>	-	-	-	-	-	-	12.9 <sub>(0.6)</sub>	31.3 <sub>(1.0)</sub>	17.9 <sub>(1.0)</sub>	4.9 <sub>(0.5)</sub>	13.4 <sub>(0.2)</sub>	-
<i>Viscum</i> sp. <sup>16,22</sup>	7.5 <sub>(2.0)</sub>	21.3 <sub>(3.6)</sub>	27.3 <sub>(4.8)</sub>	20.2 <sub>(2.6)</sub>	10.2 <sub>(1.4)</sub>	11.5 <sub>(0.8)</sub>	7.0 <sub>(1.1)</sub>	23.9 <sub>(3.3)</sub>	19.9 <sub>(2.2)</sub>	10.2 <sub>(1.4)</sub>	12.0 <sub>(0.7)</sub>	-
<b>Other</b>												
Bean shell residue (unknown) <sup>1,0</sup>	4.7 <sub>(na)</sub>	12.1 <sub>(na)</sub>	47.3 <sub>(na)</sub>	34.5 <sub>(na)</sub>	6.2 <sub>(na)</sub>	8.2 <sub>(na)</sub>	-	-	-	-	-	-
Commercial supplement (unknown) <sup>1,0</sup>	9.3 <sub>(na)</sub>	14.4 <sub>(na)</sub>	44.1 <sub>(na)</sub>	34.1 <sub>(na)</sub>	7.9 <sub>(na)</sub>	8.6 <sub>(na)</sub>	-	-	-	-	-	-
Groundnuts ( <i>Arachis hypogaea</i> ) <sup>1,0</sup>	8.0 <sub>(na)</sub>	14.6 <sub>(na)</sub>	33.8 <sub>(na)</sub>	27.1 <sub>(na)</sub>	7.7 <sub>(na)</sub>	9.5 <sub>(na)</sub>	-	-	-	-	-	-
Maize stova ( <i>Z. mays</i> ) <sup>1,0</sup>	8.0 <sub>(na)</sub>	8.2 <sub>(na)</sub>	63.7 <sub>(na)</sub>	33.5 <sub>(na)</sub>	4.8 <sub>(na)</sub>	7.7 <sub>(na)</sub>	-	-	-	-	-	-
Melon ( <i>Cucumis</i> sp.) <sup>2,0</sup>	8.2 <sub>(1.3)</sub>	9.2 <sub>(4.3)</sub>	28.3 <sub>(8.1)</sub>	23.5 <sub>(5.6)</sub>	10.0 <sub>(1.9)</sub>	9.1 <sub>(0.0)</sub>	-	-	-	-	-	-
Monogana <sup>*1,0</sup>	4.7 <sub>(na)</sub>	2.4 <sub>(na)</sub>	28.7 <sub>(na)</sub>	25.9 <sub>(na)</sub>	12.1 <sub>(na)</sub>	7.7 <sub>(na)</sub>	-	-	-	-	-	-
Sunflower head ( <i>Helianthus</i> sp.) <sup>1,0</sup>	16.0 <sub>(na)</sub>	7.5 <sub>(na)</sub>	27.4 <sub>(na)</sub>	20.1 <sub>(na)</sub>	4.0 <sub>(na)</sub>	9.3 <sub>(na)</sub>	-	-	-	-	-	-
Unknown pods <sup>1,0</sup>	4.8 <sub>(na)</sub>	16.9 <sub>(na)</sub>	35.1 <sub>(na)</sub>	22.4 <sub>(na)</sub>	6.5 <sub>(na)</sub>	10.5 <sub>(na)</sub>	-	-	-	-	-	-
Watermelon ( <i>Citrullus lanatus</i> ) <sup>1,0</sup>	11.4 <sub>(na)</sub>	6.6 <sub>(na)</sub>	42.7 <sub>(na)</sub>	29.2 <sub>(na)</sub>	10.4 <sub>(na)</sub>	8.0 <sub>(na)</sub>	-	-	-	-	-	-
Pasture <sup>0,84</sup>	-	-	-	-	-	-	13.6 <sub>(5.0)</sub>	21.6 <sub>(8.4)</sub>	24.0 <sub>(7.5)</sub>	5.7 <sub>(2.9)</sub>	11.0 <sub>(2.0)</sub>	-

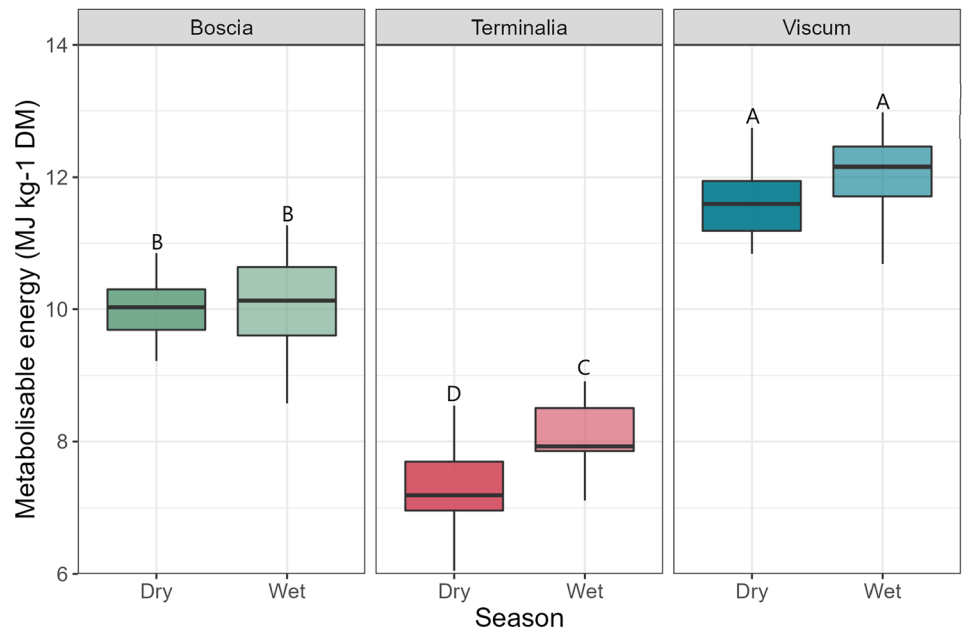
Concentrations are expressed as % DM, except for ME which is expressed as MJ kg<sup>-1</sup> DM

Superscript numbers after species names signify sample size (n) for the two seasons respectively

Subscript after values represent standard deviation (where available)

See text, methods section, for abbreviations

**Fig. 3** Metabolizable energy concentrations ( $\text{MJ kg}^{-1}$  DM) of *Boscia* sp., *Terminalia* sp., and *Viscum* sp. between the dry and wet seasons. Boxplots sharing letters are not significantly different to one another

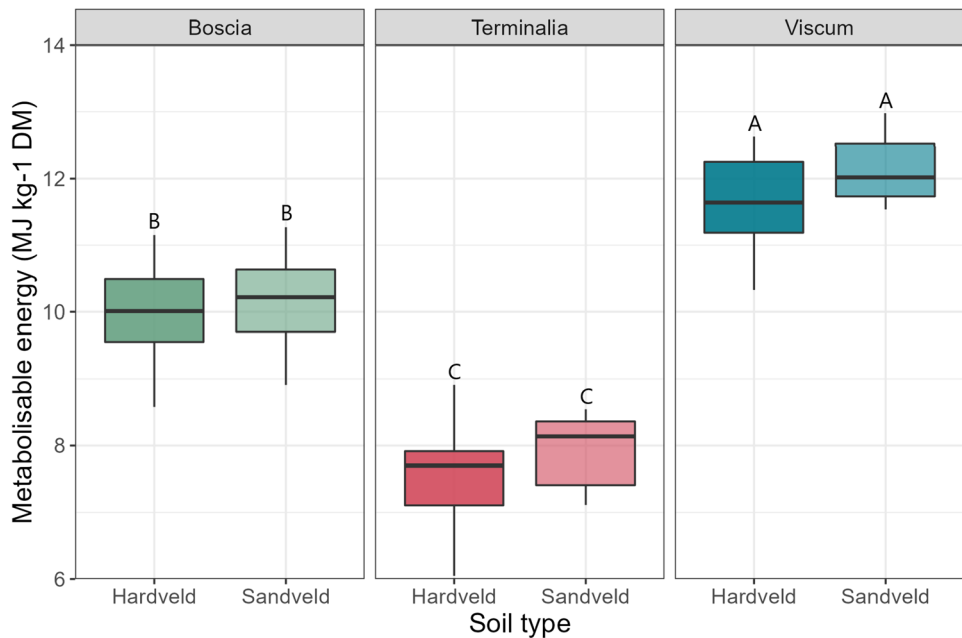


### 3.2 Supplement trials

The nutritional profile of supplements varied greatly (Table 5). Crop residues had the lowest CP, ADF and ADL concentrations. Pellets and *L. purpureus* had middling profiles in all regards, CP was above minimum requirements (5–7%) (Lazzarini et al., 2009; Pugh, 2020), but lower than optimal (15–17%) (Salah, 2015). NDF:ADF ratios were around 4:3. *Dichrostachys cinerea* stood out in terms of high CP concentrations, low ash content, and low ADF.

Crop residue consumption rates were low across both seasons, at around 0.01 kg (10 g) per goat unit and  $\leq 10\%$  of total provision (Fig. 5). In the wet season trials, this equated to around 0.6% of daily DMI targets, doubling to 1.2% in the dry season (Table 6). Conversely, consumption rates of pellets were high, with herds consuming half or more of their allocation, equating to an average of 34.9% of their daily DMI target in the wet season and 44.5% in the dry season (+27.5%). Consumption rates of *L. purpureus* and *D. cinerea* pods were moderate, with goats consuming approximately half of the ration.

**Fig. 4** Metabolizable energy concentrations ( $\text{MJ kg}^{-1}$  DM) of *Boscia* sp., *Terminalia* sp., and *Viscum* sp. between samples obtained from Hardveld soils and Sandveld soils. boxplots sharing letters are not significantly different to one another



**Table 5** Nutritional profile of supplementary feeds used in feeding trials

	Ash	CP	NDF	ADF	ADL	ME
<i>D. cinerea</i> pods	4.3	16.5	40.4	27.3	8.9	9.8
<i>L. purpureus</i>	7.8	10.8	47.6	31.5	7.3	8.4
Maize stova	8.0	8.2	63.7	33.5	4.8	7.7
Mixed crop residue	10.9	5.3	44.0	25.8	4.5	8.2
Pellets	10.3	12.4	42.3	26.4	6.3	9.3

Concentrations are expressed as % DM, with the exception of ME which is expressed as MJ kg<sup>-1</sup> DM

In no cases did the total provision or availability of supplement appear to be a limiting factor to consumption.

### 3.3 Feed-baskets

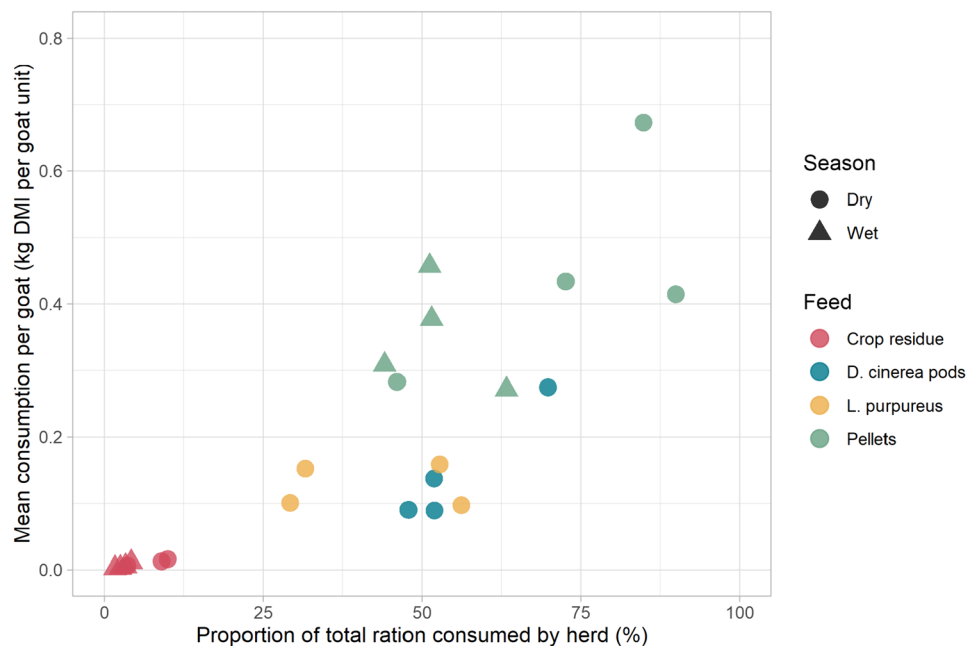
Wet season feed-baskets typically had higher ME and CP concentrations than dry season feed-baskets (Tables 7 and 8). Both the highest and lowest CP:ME ratios were observed in the wet season feed-baskets (Table 9) and these were predominantly driven by the basal diet (pasture: browse ratio), as opposed to supplementation. Supplementation with crop residue had little impact on ME and CP concentrations, due to its low inclusion level. Pellets had no strong effect on ME in the dry season but had a small effect in the wet season. Notably, pellets had a large negative impact on CP across both seasons, due to their low CP concentration and high intake rate. *L. purpureus* (dry season only) had a small negative effect on CP and to a lesser extent ME. *D. cinerea* pods had a small positive effect on ME and a small negative effect on CP. *Viscum* sp. provided moderate gains to ME

across both seasons, yielding the most energy dense feed baskets. During the dry season, it marginally lowered CP, due to the high CP content of the basal diet, though for the wet season it provided a moderate increase in CP.

## 4 Discussion

This study describes both challenges and opportunities to small holder goat production systems in Botswana, and wider sub-Saharan Africa. Results highlight the potential benefits of more strategic utilisation of browse plants and of supplementation to support goat productivity, health, and survival. However further research is required to test such interventions in the long-term. Improvements to goat production systems are beneficial to the food security of households and communities who are reliant on the sale and consumption of goats, but who are vulnerable to both short- and long-term shocks, such as droughts, disease, and events that can drive goat mortality or reduced performance.

**Fig. 5** Consumption rates of supplements during supplementation trials. Each point refers to an individual trial on one farm. Note: one result for crop residue consumption in the dry season was voided as goats spilled the feed bucket and thus quantification of consumption was not possible





**Table 6** Mean percentage of target dry matter intake (4% liveweight of one goat unit = 1.01 kg) met by supplementation

	Dry season		Wet season	
	Mean % target DMI	S.D.	Mean % target DMI	S.D.
Crop residue	1.2	0.5	0.6	0.4
Pellets	44.5	16.0	34.9	8.1
<i>L. purpureus</i>	12.5	3.2	-	-
<i>D. cinerea</i>	14.6	8.6	-	-

The protein and energy requirements of goats will depend on a whole array of factors, both biotic and abiotic, including breed, level of performance, health status, and thermoregulation; but assuming a level of lactation (0.5–1 L per day) or moderate body weight gain of ca. 20 g/day goats will require approximately 9.4 MJ/day and 54 g metabolizable protein (modified from AFRC, 1993; assuming  $q_m = 0.59$ ). Assuming also a ratio of metabolizable protein: crude protein of 0.64 – 0.80 (Cannas et al., 2009) would equate to roughly 84.4 – 67.5 g CP/day plus 55 g CP/litre of milk. Such values are predicted from equations using European breeds and conditions but provide a range of target intakes to assess African diets, until more detailed understanding of the protein and energy requirements of African goats under local conditions and diets is available. As such, the availability of the key nutrient's protein and energy, notwithstanding water, and micro-nutrients (which this paper does not consider), evaluated in this study from the basal diets (herbaceous plants and browse consumed prior to kraaling) were critically constraining for ME in the dry season,

**Table 7** Metabolizable energy (ME) concentrations ( $\text{MJ kg}^{-1}$  DM) of theoretical feed-baskets

	Herbaceous: Browse					
	25:75	20:80	15:85	10:90	5:95	0:100
<b>Dry season</b>						
None (0.0%)	9.15	9.06	8.97	8.88	8.78	8.69
Crop residue (1.2%)	9.14	9.05	8.96	8.87	8.78	8.69
Pellets (44.5%)	9.20	9.15	9.10	9.05	9.00	8.95
<i>L. purpureus</i> (12.5%)	9.05	8.97	8.89	8.81	8.73	8.65
<i>D. cinerea</i> (14.6%)	9.24	9.17	9.09	9.01	8.94	8.86
<i>Viscum</i> sp. (20.0%)	9.62	9.55	9.48	9.40	9.33	9.26
	Pasture: Browse					
<b>Wet season</b>	100:0	80:20	60:40	40:60	20:80	0:100
None (0.0%)	10.58	10.38	10.18	9.98	9.78	9.58
Crop residue (0.6%)	10.56	10.36	10.17	9.97	9.77	9.57
Pellets (34.9%)	10.12	9.99	9.86	9.73	9.60	9.47
<i>Viscum</i> sp. (20.0%)	10.86	10.70	10.54	10.38	10.22	10.06

Supplementation rates are derived from trial results (Table 6)

Shading is relative to cell value

The table provides sufficient information to enable the reader to estimate ME concentrations of other rations of these feeds

emphasising the critical role of supplementation. Available nutrition was more favourable in the wet season, consistent with other reports from SSA (Omphile et al., 2005; Setshogo et al., 2011).

The vegetation of arid range land is dominated by browse, in the form of shrubs, bushes and sub-shrubs (van Duivenbooden, 1989), and they form an integral part of the farming system in the region. In terms of utilisation, browse currently play an important, albeit non-strategic role in goat nutrition, as animals under confinement in the humid zone often receive one type or the other of browse, from fallow lands or around the homestead, forming up to 25% of their diet. In the arid and semi-arid zones, browse constitute the main feed resource during the extended dry periods of the year (Le Houerou, 1980) and play a similar role in the sub-humid savannah zone. The nutritional value of browse has also been exploited in feeding systems using them as supplements to low quality tropical forages and crop residues. In general, many of the common browse species contain high levels of protein and energy in the range of 14 to 26% CP and 11 to 14 MJ of ME/kg of dry matter. In addition, they have good levels of organic matter digestibility (50–60%), and contain reasonable levels of both macro and trace minerals required for efficient rumen function (Smith, 1992).

*Terminalia*, which made up a key component of many of the basal diets, had low concentrations of CP and ME, especially in the dry season. For example, CP was only just above maintenance requirements providing ca. 78 g CP/kg DM, which is also when *Terminalia* is likely to make up a greater proportion of the diet due to lack of available grazing. Therefore, goats consuming a high proportion of *Terminalia* may be limiting their protein and energy intake. Conversely, CP and ME levels in *Viscum*, a potential supplement, were high

**Table 8** Crude protein (CP) concentrations (% DM) of theoretical feed-baskets

Dry season	Herbaceous: Browse					
	25:75	20:80	15:85	10:90	5:95	0:100
None (0.0%)	17.92	17.92	17.93	17.94	17.94	17.95
Crop residue (1.2%)	17.77	17.77	17.78	17.79	17.79	17.80
Pellets (44.5%)	15.46	15.47	15.47	15.47	15.48	15.48
<i>L. purpureus</i> (12.5%)	17.03	17.03	17.04	17.05	17.05	17.06
<i>D. cinerea</i> (14.6%)	17.71	17.72	17.72	17.73	17.73	17.74
<i>Viscum sp.</i> (20.0%)	17.79	17.79	17.80	17.81	17.81	17.82
Wet season	Pasture: Browse					
	100:0	80:20	60:40	40:60	20:80	0:100
None (0.0%)	17.64	18.33	19.03	19.72	20.42	21.11
Crop residue (0.6%)	17.56	18.25	18.94	19.63	20.32	21.02
Pellets (34.9%)	15.81	16.26	16.71	17.17	17.62	18.07
<i>Viscum sp.</i> (20.0%)	18.50	19.06	19.62	20.17	20.73	21.28

Supplementation rates are derived from trial results (Table 6)

Shading is relative to cell value

The table provides sufficient information to enable the reader to estimate CP concentrations of other rations of these feeds

all year round. Typically, goats do not consume *Viscum* in Botswana, predominantly due to it being a parasitic plant high up in its host trees which is difficult to reach, thus requiring harvesting by farmers. However, as *Viscum* lives on trees, including *Terminalia* and *Acacia*, this may provide an opportunity for farmers to compensate for the lower protein and energy contents of these trees by supplementing with *Viscum* from the same trees. Furthermore, parasitism of fruit trees by *Viscum* is a limiting factor to fruit yields and there is therefore a potentially synergy if *Viscum* could

be harvested from orchards. Madibela et al. (2000) reported favourable dry matter and protein degradability of *Viscum* in Botswana. *Viscum* is also reported to have nutraceutical/anthelmintic properties (Madibela & Jansen, 2003; Madibela et al., 2010; Moncho et al., 2012), which may mitigate negative health impacts from infections such as gastrointestinal nematodes, which themselves act to reduce protein assimilation. For the supplements provided during both seasons (crop residue and pellets), intake was considerably higher in the dry season, hence goats were likely to consume

**Table 9** Crude protein to metabolisable energy ratio of theoretical feed baskets (grams CP per MJ ME, dry matter basis)

Dry season	Herbaceous: Browse					
	25:75	20:80	15:85	10:90	5:95	0:100
None (0.0%)	19.6	19.8	20.0	20.2	20.4	20.7
Crop residue (1.2%)	19.4	19.6	19.8	20.1	20.3	20.5
Pellets (44.5%)	16.8	16.9	17.0	17.1	17.2	17.3
<i>L. purpureus</i> (12.5%)	18.8	19.0	19.2	19.4	19.5	19.7
<i>D. cinerea</i> (14.6%)	19.2	19.3	19.5	19.7	19.8	20.0
<i>Viscum sp.</i> (20.0%)	18.5	18.6	18.8	18.9	19.1	19.2
Wet season	Pasture: Browse					
	100:0	80:20	60:40	40:60	20:80	0:100
None (0.0%)	16.7	17.7	18.7	19.8	20.9	22.0
Crop residue (0.6%)	16.6	17.6	18.6	19.7	20.8	22.0
Pellets (34.9%)	15.6	16.3	16.9	17.6	18.4	19.1
<i>Viscum sp.</i> (20.0%)	17.0	17.8	18.6	19.4	20.3	21.2

Supplementation rates are derived from trial results (Table 6)

Shading is relative to cell value

supplements to mitigate nutrient/DMI deficiencies. This is consistent with feeding practices in SSA, where livestock generally depend on natural forage during the wet season and are only supplemented during the dry season. Pellets showed the potential to provide between a third (wet season) to a half (dry season) of target DMI, the main drawback being their cost and availability. Alternatively, *D. cinerea* pods, and to a lesser extent *L. purpureus*, may be a compromise, as they had favourable nutritional profiles and could make up 10–15% of DMI requirements. They are readily available and may be accessible at low cost in communal areas. Crop residues, predominately stovers from cereal crops, were not particularly desirable to goats as a supplement, though their precise composition was unknown and different residue mixes may vary. Despite the low CP of crop residue, the ADF concentration was favourable and high enough to meet requirements for rumen health, if little other feed was available. Crop residues may be a more available resource than other supplements and thus a more practical option for farmers practising mixed farming, who may use *D. cinerea* pods and *L. purpureus* alongside crop residues, assuming complementary and/or synergistic roles of these supplementary feeds. Low quality crop residues, such as stover, therefore should be considered as a resource to ensure rumen function, i.e. functional fibre to supplement higher quality feeds (Giger-Reverdin, 2017), or as a last resort basal feed during extreme dry periods where little other feed resources are available. Furthermore, in the event of crop-failure, which is becoming increasingly likely under the pressures of climate change, the consumption of failed crops by ruminants may be one way to ensure that resource is most efficiently utilised for food production. A constraint of the current study was that supplementation at any one farm was from a single supplement source, which may limit the potential of mixing different supplements to balance protein and energy requirements in a true feed-basket or total mixed ration approach. Of course, those rations would also consider other nutrients not evaluated here such as micro-nutrients.

Nutritional differences were apparent, albeit relatively minor, between farms on Hardveld and Sandveld soils. Results suggest that farms in Hardveld soil areas may benefit most from supplementation or other interventions. This study was conducted in a limited geographic range and thus when considering wider spatial variation across Botswana and SSA, further differences in plant nutritional composition (e.g., micro-nutrient composition, as already reflected) are expected to result from soil type and climatic differences, in line with wide ranges reported in the literature. However, the biggest factor facing productivity for crop-livestock farmers, specifically, will be dry matter yield of pasture in relation to soil fertility and rainfall. Mutali and Dzowela (1985) and Onifade and Agishi (1990) predicted native grassland dry

matter yield to be between 1.1 – 3.2 t DM per ha per year. Therefore, with resources limited, especially within crop-livestock systems, the lower dry matter demands of goats would be significantly advantageous over cattle systems.

The ME and CP concentrations of feed baskets were lower in the dry season than the wet season, which is a common observation within the region (Cooke et al., 2023a, b; Naumann et al., 2017). This meant that supplementation had a greater relative impact in the dry season compared to the wet season, highlighting temporal opportunities in nutritional intervention. Although not analysed in this work, it is likely that dry season forages had lower digestibility (Aganga et al., 2005) which would make it less likely for goats to meet their daily DMI requirement, thus increasing the relative value of supplementation further. Importantly, whilst the addition of a supplement of lower quality than the basal diet will lower the nutritional composition of the overall diet, that may be acceptable if it increases overall energy intake by making up for a shortfall in DMI, or availability of feed during periods of kraaling. During the dry season there is a stronger case for supplementation due to the lower availability and nutritional quality of forages and lower animal performance (Kraai et al., 2022). This could be most effectively targeted towards vulnerable individuals such as weanlings, pregnant does, or animals with suspected illness. The CP:ME ratio is an important determinant of a diet's ability to support animal growth / performance and efficiency of nitrogen use. Low ratios would impair growth and performance limited by protein availability, whereas high values would reduce the efficiency of protein capture in the rumen leading to poor nitrogen use efficiency. All the reported diets had high CP:ME ratios which further highlights the limiting nature of available energy in these diets. Zhang et al. (2020) reported a reduction in nitrogen excretion and an increased nutrient utilization through improving rumen fermentation, enhancing nutrient digestion and absorption, and altering rumen microbiota in growing goats when reducing CP:ME from 11.3 to 8.69. In the current study, CP:ME ratios ranged from 15.6 – 22.0, with lower ratios being associated with diets with an increased ratio of pasture:browse. The high values highlight significant challenges in both wet and dry season in terms of ME availability (Gabler & Heinrichs, 2003; Yeom et al., 2002) and the need to identify supplements with higher ME values.

The seemingly favourable nutritional profile of *Viscum* sp. (ME 11.5 MJ/kg) suggests it could be an effective supplement to improve nutrition, particularly during the dry season. This is further supported by anthelmintic properties reported elsewhere (Madibela et al., 2010; Moncho et al., 2012). Madibela and Jansen (2003) reported no adverse effects of *Viscum* sp. supplementation, however research is limited and, especially at higher concentrations, caution should be taken, and long-term research conducted. Forage preservation may be

necessary to facilitate supplementation, however this is not a common practice in the region, leaving animal nutrition dependent on the environment, particularly weather. Creating stocks of preserved forages could allow farmers to withstand periods of poor forage availability/nutrition and other adverse events (e.g., drought and disease). However, forage preservation is complex, and farmers will have varying capacity to do this. Perhaps community driven and cooperative schemes could be better placed to achieve this, with technical extension support.

This study focussed on macronutrients (fibre, protein, and energy); however, micronutrient (minerals and vitamins) balances are also important. Notably, phosphorus availability is an issue in Botswana and much of SSA (Setshogo et al., 2011; Verde & Matusso, 2014). Further investigation of these diets would help to ensure micronutrient requirements are best met and enable targeted intervention of deficiencies.

The contribution of goats to rural household and community food security is significant. Gwiriri et al. (2023), studying smallholders in the same area as this study, found that goat ownership was strongly associated with household food security status and identified supplementation as a strategy to improve goat survivability and livelihood sustenance (e.g. food and financial security). Of course, this is a two-way street, those who are more financially secure are more likely to be able to invest in goats, but similarly, there is a wealth of evidence across sub-Saharan Africa showing a causal link that goat ownership bolsters food and financial security (Tefera, 2007; Wodajo et al., 2020). Whilst our results presented here do not go as far as to directly test the long-term implications of supplementation on food-security (which will be a key area for future research), any improvement to goat survival and productivity will almost certainly bolster the food and financial security and resilience of goat owners.

## 5 Conclusion

Natural pastures and browse play, and will continue to play, an important role in the nutrition and feeding systems of goats in Africa. These feed resources are subjected to seasonal fluctuations, that limit their capacity to cover livestock requirements. Indeed, feed budgets from basal diet resources (pasture and browse) in SSA show a deficit, especially in terms of metabolizable energy (ME) Therefore, supplementation must be utilised to ensure acceptable production levels and health. Here we examined several potential feeds and suggestions were made as to how they could be used to develop feed baskets in the dry and wet seasons for goats. Forages in Botswana were found to be nutritionally

diverse, between species, and also across time (season) and space (soil type). Whilst optimising nutrition is important all year around, the greatest gains appear possible during the dry season, when supplementation can both improve the nutritional quality of feed-baskets and make up for potential shortfalls in overall forage availability. However, all supplementation is not equal and there are distinct differences in nutrition, availability, and intake rates. Supplementation with *Viscum* sp. appears to hold significant potential and requires further and detailed study. Farmer-led improvements in targeted supplementation will reduce feed and disease related goat mortalities and thus, optimise productivity. Given the heavy reliance of African livelihoods on goats, this will improve availability of goats and goat-driven food products and income, resulting in sustained food and nutritional security for vulnerable communities in Botswana and elsewhere in Africa.

**Acknowledgements** We are sincerely grateful to the small holder farmers who were involved in this study for their time, patience, knowledge, and willingness to participate. We acknowledge the Ministry of Agriculture, Department of Veterinary Services, Botswana for support. We also acknowledge the outstanding individual contribution of the small livestock Technical Assistant for Serowe, Mr. Ntebolang Ditsela. Thanks are also extended to colleagues at BIUST (Botswana), LUANAR (Malawi), the University of Pretoria (South-Africa), Rothamsted Research (UK), Harper Adams University (UK), and Queen's University Belfast (UK), for advice assistance and support during the course of this study.

**Funding** This work was supported by United Kingdom Research and Innovation (UKRI) through the Global Challenges Research Fund, grant number BB/S014748/1, 2018. For the purpose of open access, the author has applied a Creative Commons Attribution (CC BY) licence.

**Data availability** Data is available from authors upon reasonable request.

## Declarations

**Ethical approval** This work was given ethical approval by the Animal Research Ethics Committee of the Directorate of Research and Development, Botswana International University of Science and Technology.

**Conflicts of interest** The authors declared that they have no conflict of interest.

**Open Access** This article is licensed under a Creative Commons Attribution 4.0 International License, which permits use, sharing, adaptation, distribution and reproduction in any medium or format, as long as you give appropriate credit to the original author(s) and the source, provide a link to the Creative Commons licence, and indicate if changes were made. The images or other third party material in this article are included in the article's Creative Commons licence, unless indicated otherwise in a credit line to the material. If material is not included in the article's Creative Commons licence and your intended use is not permitted by statutory regulation or exceeds the permitted use, you will need to obtain permission directly from the copyright holder. To view a copy of this licence, visit <http://creativecommons.org/licenses/by/4.0/>.



## References

- AFRC. (1993). *Energy and Protein Requirements of Ruminants*. Wallingford, UK: Agricultural Food and Research Council Technical Committee on Responses to Nutrients.
- Aganga, A., & Autlwetse, M. (2000). Utilization of sorghum forage, millet forage, veldt grass and buffel grass by tswana sheep and goats when fed lablab purpureus L. as protein supplement. *Asian-Australasian Journal of Animal Sciences*, *13*, 1127–1132. <https://doi.org/10.5713/ajas.2000.1127>
- Aganga, A. A., Omphile, U. J., & Mojadithogo, N. (2005). Composition and digestibility of indigenous grasses in the hardveld of Botswana during the dry season. *Archivos de Zootecnia*, *54*(208), 587–598.
- Bolowe, M. A., Thutwa, K., Monau, P. I., Malejane, C., & Kgwatalala, P. M. (2022). Production characteristics and management practices of indigenous Tswana sheep in southern districts of Botswana. *Animals*, *12*(7), 830. <https://doi.org/10.3390/ani12070830>
- Burgess, J. (2005). Country Profile - Botswana. *Food and Agriculture Organization of the United Nations (FAO)*. Rome, Italy.
- Cannas, A., Atzori, A., Boe, F., & Teixeira, I. (2009). Energy and protein requirements of goats. *Dairy Goats, Feeding and Nutrition*, 118–146. <https://www.cabidigitallibrary.org/doi/pdf/10.5555/20083075574>
- Cooke, A. S., Machezano, H., Gwiriri, L. C., Tinsley, J. H. I., Silva, G., Nyamukondiwa, C., et al. (2023a). The nutritional feed gap: A review of seasonal variation in ruminant forage availability and quality in Southern Africa. *SSRN*. <https://doi.org/10.2139/ssrn.4673336>
- Cooke, A. S., Mvula, W., Ventura-Cordero, J., Gwiriri, L. C., Takahashi, T., Morgan, E. R., et al. (2023b). Nutritional characterisation and seasonal variation of goat forages in Central Malawi. *bioRxiv*, 2023.12.22.573017. <https://doi.org/10.1101/2023.12.22.573017>
- Ebeling, M. E. (1968). The dumas method for nitrogen in feeds. *Journal of Association of Official Analytical Chemists*, *51*(4), 766–770. <https://doi.org/10.1093/jaoac/51.4.766>
- Freking, B., & McDaniel, J. (2016). *Goat Nutrition*. Oklahoma State University.
- Gabler, M. T., & Heinrichs, A. J. (2003). Dietary protein to metabolizable energy ratios on feed efficiency and structural growth of prepubertal Holstein heifers. *Journal of Dairy Science*, *86*(1), 268–274. [https://doi.org/10.3168/jds.S0022-0302\(03\)73605-4](https://doi.org/10.3168/jds.S0022-0302(03)73605-4)
- Giger-Reverdin, S. (2017). Recent advances in the understanding of subacute ruminal acidosis (SARA) in goats, with focus on the link to feeding behaviour. *Small Ruminant Research*, *163*, 24–28. <https://doi.org/10.1016/j.smallrumres.2017.08.008>
- Goering, H. K., & Soest, P. J. V. (1970). *Forage Fiber Analyses (apparatus, Reagents, Procedures, and Some Applications)*. U.S. Agricultural Research Service.
- Google. (2021). Google Maps. <https://www.google.com/maps/place/52%C2%B021'30.2%22N+1%C2%B019'47.5%22W/@52.3569194,-1.3296591,574m/data=!3m1!1e3!4m5!3m4!1s0x0:0x245798795569b99d!8m2!3d52.3584!4d-1.32987>. Accessed 10 August 2022.
- Gwiriri, L. C., Machezano, H., Cooke, A. S., Nyamukondiwa, C., Safalaoh, A., Ventura-Cordero, J., et al. (2023). Ecological interventions to enhance goat health and livelihood outcomes in rural Sub-Saharan African communities. *SSRN*. <https://doi.org/10.2139/ssrn.4581363>
- Katongole, J. B. D., Sebolai, B., & Madimabe, M. J. (1996). Morphological characterisation of the Tswana goat. *International livestock research institute*. <https://cgspace.cgiar.org/handle/10568/70869>. Accessed 11 August 2022.
- Kaumbata, W., Banda, L., Mészáros, G., Gondwe, T., Woodward-Greene, M. J., Rosen, B. D., et al. (2020). Tangible and intangible benefits of local goats rearing in smallholder farms in Malawi. *Small Ruminant Research*, *187*, 106095. <https://doi.org/10.1016/j.smallrumres.2020.106095>
- Kraai, M., Tsvuura, Z., & Khowa, A. A. (2022). The reproductive performance of goats in a South African semi-arid savanna. *Journal of Arid Environments*, *200*, 104723. <https://doi.org/10.1016/j.jaridenv.2022.104723>
- Lazzarini, I., Detmann, E., Sampaio, C. B., Paulino, M. F., de Valadares Filho, S., & C., Souza, M. A. de, & Oliveira, F. A. (2009). Intake and digestibility in cattle fed low-quality tropical forage and supplemented with nitrogenous compounds. *Revista Brasileira de Zootecnia*, *38*, 2021–2030. <https://doi.org/10.1590/S1516-35982009001000024>
- Le Houerou, H., N. (1980). *Browse in Africa; The Current state of Knowledge*. International Livestock Centre for Africa.
- Lwin, D. S., Williams, A., Barber, D. G., Benvenuti, M. A., Williams, B., Poppi, D. P., & Harper, K. J. (2022). Comparison of equations to predict the metabolisable energy content as applied to the vertical strata and plant parts of forage sorghum (*Sorghum bicolor*). *Animal Production Science*, *62*(11), 1006–1013.
- Madibela, O. R., Boitumelo, W. S., & Letso, M. (2000). Chemical composition and in vitro dry matter digestibility of four parasitic plants (*Tapinanthus lugardii*, *Erianthemum ngamicum*, *Viscum rotundifolium* and *Viscum verrucosum*) in Botswana. *Animal Feed Science and Technology*, *84*(1/2), 97–106. [https://doi.org/10.1016/s0377-8401\(00\)00106-1](https://doi.org/10.1016/s0377-8401(00)00106-1)
- Madibela, O. R., & Jansen, K. (2003). The use of indigenous parasitic plant (*Viscum verrocosum*) in reducing faecal egg counts in female Tswana goats. *Livestock Research for Rural Development*, *15*(9), 1–6.
- Madibela, O. R., Ramabu, S. S., & Machete, J. B. (2010). The effects of parasitic plant (*Viscum verrucosum*) on live weight and faecal egg count in female Tswana goats. Presented at the 5th All Africa Conference on Animal Agriculture, Addis Ababa, Ethiopia.
- Manirakiza, J., Hatungumukama, G., Besbes, B., & Detilleux, J. (2020). Characteristics of smallholders' goat production systems and effect of Boer crossbreeding on body measurements of goats in Burundi. *Pastoralism: Research, Policy and Practice*, *10*(2), 1–11. <https://doi.org/10.1186/s13570-019-0157-5>
- Mataveia, G. A., Visser, C., & Siteo, A. (2021). Smallholder goat production in Southern Africa: A review. *IntechOpen*. <https://doi.org/10.5772/intechopen.97792>
- Ministry of Agriculture. (2019). Guidelines for livestock management and infrastructure development programme phase II. *Government of Botswana*, 13.
- Ministry of Local Government and Rural Development. (2009). Remote area development programme. *Government of Botswana*. <https://www.un.org/esa/socdev/unpfii/documents/2016/NGO-Indigenous/Botswana-RADP-Programme.pdf>. Accessed 31 August 2022.
- Minson, D. J. (1984). Digestibility and voluntary intake by sheep of five *Digitaria* species. *Australian Journal of Experimental Agriculture*, *24*(127), 494–500. <https://doi.org/10.1071/ea9840494>
- Monau, P. I., Visser, C., Nsoso, S. J., & Van Marle-Köster, E. (2017). A survey analysis of indigenous goat production in communal farming systems of Botswana. *Tropical Animal Health and Production*, *49*(6), 1265–1271. <https://doi.org/10.1007/s11250-017-1324-6>
- Moncho, T., Madibela, O. R., Machete, J. B., Bonang, V., & Motlhanka, D. M. T. (2012). Effect of crude extracts of *Viscum verrocosum*



- treatment on nematode parasite faecal egg count in female Tswana goats. Presented at the Third RUFORUM Biennial Meeting, Entebbe, Uganda.
- Mutali, J. T., & Dzowela, B. H. (1985). Inventory of livestock feeds in Malawi. *Proceedings of the second PANESA workshop* (pp. 61–69). Nairobi, Kenya: Presented at the Animal feed resources for small-scale livestock producers.
- NASA. (2022). NASA worldview. <https://worldview.earthdata.nasa.gov/>
- Naumann, H. D., Cooper, C. E., & Muir, J. P. (2017). Seasonality affects leaf nutrient and condensed tannin concentration in southern African savannah browse. *African Journal of Ecology*, 55(2), 168–175. <https://doi.org/10.1111/aje.12336>
- Nsoso, S. J., Monkhei, M., & Tlhwaafalo, B. E. (2004). A survey of traditional small stock farmers in Molepolole North, Kweneng district, Botswana: Demographic parameters, market practices and marketing channels. *Livestock Research for Rural Development*, 16(12). <https://www.lrrd.cipav.org.co/lrrd16/12/nsos16100.htm>. Accessed 26 May 2020.
- Omphile, U. J., Aganga, A. A., & Malamba, B. (2005). Diets and forage preference of communally grazed range goats in an acacia bush Savanna in Southeast Botswana. *Journal of Biological Sciences*, 5(6), 690–693. <https://doi.org/10.3923/jbs.2005.690.693>
- Onifade, O. S., & Agishi, E. C. (1990). A review of forage production and utilisation in Nigeria savanna. *Utilisation of research results on forage and agriculture by-product materials as animal feed resources in Africa. Proceedings of the first joint workshop* (pp. 114–125). Lilongwe, Malawi: Presented at the PANESA & ARNAB.
- Panagos, P., Jones, A., Bosco, C., & Senthil Kumar, P. S. (2011). European digital archive on soil maps (EuDASM): Preserving important soil data for public free access. *International Journal of Digital Earth*, 4(5), 434–443.
- Pugh, D. G. (2020). *Nutritional Requirements of Goats - Management and Nutrition*. Auburn University. <https://www.msddvetmanual.com/management-and-nutrition/nutrition-goats/nutritional-requirements-of-goats>. Accessed 4 August 2022.
- Pule-Meulenbergh, F., & Dakota, F. D. (2009). Assessing the symbiotic dependency of grain and tree legumes on N<sub>2</sub> fixation for their N nutrition in five agro-ecological zones of Botswana. *Symbiosis*, 48(1), 68–77. <https://doi.org/10.1007/BF03179986>
- QGIS. (2022). QGIS Geographic Information System. QGIS Association. <http://qgis.org>
- R Core Team. (2021). R: A language and environment for statistical computing. Vienna, Austria: R foundation for statistical computing. <https://www.R-project.org/>
- R Studio Team. (2020). RStudio: Integrated development for R. RStudio. Boston, MA. <http://www.rstudio.com/>
- Salah, N. (2015). *Nutrition of goats, sheep and cattle in tropical and warm conditions. Evaluation of energy and protein requirements and animal responses to diet*. Paris Institute of Technology, Paris, France: Evaluation of INRA system to predict nutritive value of forage resources.
- Setshogo, M. P., Mosweu, S., & Letsholo, G. (2011). Seasonal changes in the quality of four major range grasses in communal rangelands of Matsheng, South Western Botswana. *Journal of Agriculture, Biotechnology and Ecology*, 4(2), 110–118.
- Smith, O. B. (1992). *Feed resources for goats: Recent advances in availability and utilisation in Africa*. New Delhi, India: Presented at the V International Conference on Goats.
- Statistics Botswana. (2017). *Annual Agricultural Survey Report 2017*. Gaborone: Ministry of Agricultural Development and Food Security. <https://www.statsbots.org.bw/sites/default/files/ANNUAL%20AGRIC%20SURVEY%202017%20Revised%20Version.pdf>
- Tefera, T. M. (2007). Improving women farmers' welfare through a goat credit project and its implications for promoting food security and rural livelihoods. *Journal of Rural and Community Development*, 2(2). <https://journals.brandonu.ca/jrcd/article/view/74>. Accessed 8 March 2024.
- The World Bank. (2019a). Prevalence of undernourishment (% of population). <https://data.worldbank.org/indicator/SN.ITK.DEFC.ZS?locations=BW-ZA-ZW-ZG>. Accessed 19 August 2022.
- The World Bank. (2019b). Prevalence of severe food insecurity in the population (%) - Botswana, South Africa, Zimbabwe, Sub-Saharan Africa | Data. <https://data.worldbank.org/indicator/SN.ITK.SVFLZS?locations=BW-ZA-ZW-ZG>. Accessed 19 August 2022.
- The World Bank. (2019c). Prevalence of moderate or severe food insecurity in the population (%). <https://data.worldbank.org/indicator/SN.ITK.MSFI.ZS?locations=BW-ZA-ZW-ZG>. Accessed 19 August 2022.
- van Duivenbooden, N. (1989). Contributions of various feed components to feed availability in integrated barley/livestock systems in the north-western coastal zone of Egypt: A simulation study. *Journal of Arid Environments*, 16(2), 217–228. [https://doi.org/10.1016/S0140-1963\(18\)31029-2](https://doi.org/10.1016/S0140-1963(18)31029-2)
- Verde, B., & Matusso, J. (2014). Phosphorus in Sub-Sahara African soils -strategies and options for improving available soil phosphorus in smallholder farming systems: A review. *Academic Research Journal of Agricultural Science and Research*, 2.
- Walker, J. G., Ofithile, M., Tavolaro, F. M., van Wyk, J. A., Evans, K., & Morgan, E. R. (2015). Mixed methods evaluation of targeted selective anthelmintic treatment by resource-poor smallholder goat farmers in Botswana. *Veterinary Parasitology*, 214(1), 80–88. <https://doi.org/10.1016/j.vetpar.2015.10.006>
- Wodajo, H. D., Gameda, B. A., Kinati, W., Mulem, A. A., van Eerdewijk, A., & Wieland, B. (2020). Contribution of small ruminants to food security for Ethiopian smallholder farmers. *Small Ruminant Research*, 184, 106064. <https://doi.org/10.1016/j.smallrumres.2020.106064>
- Yeom, K.-H., Trierum, G. V., Hache, A., Lee, K.-W., & Beynen, A. C. (2002). Effect of protein : Energy ratio in milk replacers on growth performance of goat kids. *Journal of Animal Physiology and Animal Nutrition*, 86(5–6), 137–143. <https://doi.org/10.1046/j.1439-0396.2002.00357.x>
- Zhang, X. X., Li, Y. X., Tang, Z. R., Sun, W. Z., Wu, L. T., An, R., et al. (2020). Reducing protein content in the diet of growing goats: Implications for nitrogen balance, intestinal nutrient digestion and absorption, and rumen microbiota. *Animal*, 14(10), 2063–2073. <https://doi.org/10.1017/S1751731120000890>



**Dr Andrew S. Cooke** is a researcher and lecturer at the University of Lincoln (UK), specialising in One Health. Andrew is particularly interested in how improvements to livestock health and welfare can yield benefits to human and environmental health. He is passionate about tackling these issues in developing nations where he believes there is the greatest potential for intervention and benefits. To achieve these goals, Andrew works with an extensive network of collaborators across the globe, sharing in expertise, experience, and resources. A key research focus for Andrew is the management and use of feeds



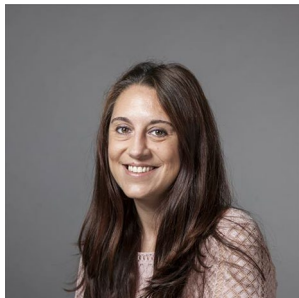
for ruminant production in Sub-Saharan Africa and how feeds can be used to enhance goat health, which underpins food and financial security for millions of people in the region.

**Dr Honest Machezano** is interested in the climate adaptation of insects both at individual and trophic levels; particularly how climate change influences survival and invasion success (pests) as well as ecosystem delivery services (beneficial insects). Secondly, he is interested in how to apply these thermal biology concepts to stored product pests to harness thermal resilience mechanisms and lethal thresholds as guides for temperature disinfestation of stored commodities. A huge component of his work also focuses on IPM.



**Dr Javier Ventura-Cordero** is a specialist in the relationship between forage nutrition and parasitic diseases of ruminants. He is particularly interested in how the strategic utilisation of forage can simultaneously improve animal nutrition

whilst exerting a protective benefit to the animal through the presence of condensed tannins and other metabolites. Dr Ventura-Cordero is especially passionate about that role that plant nutraceuticals can play in sustainable livestock systems in the developing world, where other anthelmintics and veterinary provision may otherwise be limited.



**Dr Aranzazu Louro-Lopez** is interested in the cycling of carbon and nitrogen in agricultural soils, and how it can be managed to maintain high productivity whilst also reduce environmental issues. She was awarded with a grant by National Institute for Agricultural and Food Research and Technology to conduct her PhD in Environmental Science. She investigated and evaluated the

impact of the agricultural practices for dairy farming on losses of GHG from soils under the Atlantic climatic conditions in NW Spain, to make recommendations for practices that reduce emissions and increase crop yields. Following her PhD, she worked at Lancaster University testing a new directional passive air sampler, which was designed for sampling fugitive pollutants.



**Mr Virgil Joseph** holds a first degree from the Botswana International University of Science and Technology. He is primarily interested in the role that biotechnology, botany, and entomology play in food production systems and how our understanding of those topics can help us mitigate the impacts of climate change. Mr Joseph is especially passionate about tackling these issues within



Botswana through collaborating with smallholder networks.

**Dr Lovemore Gwiriri** is a research fellow at the Centre for Agroecology, Water and Resilience (CAWR), Coventry University, UK. He has a background in rangeland ecology, livestock science and building climate resilient systems within the African context. Through its extensive work across Sub-Saharan

Africa, Dr Gwiriri has gained experience in leveraging community agency and governance structures to implement and sustain climate-resilience approaches to livestock production. He has previously worked for the International Livestock Research Institute on projects that harnessed local knowledge in climate prediction and tailoring this to community responses in natural resource and livestock production management. He has also received the Netherlands Nuffic fellowship.



**Dr Taro Takahashi** Originally trained as a mathematical economist, Dr Taro Takahashi's research interests include bioeconomic modelling and life cycle assessment (LCA) of livestock production systems as well as programme evaluation and general equilibrium modelling of pasture and livestock-based economies. His interests lie in 'shortlisting' the information farmers should record

on-farm to improve their economic or environmental performance and, equally importantly, identification of information they don't actually need to record, despite being frequently told to do so.



**Professor Eric R. Morgan** is interested in how climate influences the epidemiology of parasitic infections in animals. Internal parasites, especially helminths, strongly affect the health and fitness of animals, and often have life stages that live away from the main host and are exposed to external environmental conditions. Climate - and climate change - is therefore a key driver of infection patterns. Management of parasites is further challenged by drug resistance, which

undermines farming systems that rely on chemical use. Professor Morgan's research tries to advance and apply knowledge of the ecology of parasite populations to meet these challenges with better adapted management strategies. Professor Morgan and his team use a combination of experiments on parasite biology, predictive computer modelling, and observations of field epidemiology. The work is global across farmed, companion and wild animal systems, including the troublesome issue of parasite and disease transmission across the wild-domestic interface.



**Professor Michael R. F. Lee** is Deputy Vice Chancellor of Harper Adams University. Michael is an expert in sustainable livestock systems, defining their role in securing global food security at the same time as protecting environmental health (Livestock's role in human and planetary health). Amongst numerous other honours, Michael is President of the


European Federation of Animal Science - Livestock Farming Commission, Chair of the UK Universities Climate Network - Net Zero Group, Technical Advisor to the FAO (LEAP), and Member of the BBC Rural Affairs Committee.



**Dr Casper Nyamukondiwa** is Associate Professor at Botswana International University of Science & Technology. His research focusses on solving issues in agricultural systems, especially with regards to climate change, pest management, and sustainability. Dr Nyamukondiwa has extensive experience in project management and works closely within, and coordinating, large networks both within Botswana and internationally. He is particularly passionate about

working closely with local communities and smallholders to address the issues that are important to them.

## Authors and Affiliations

**Andrew S. Cooke**<sup>1,2</sup>  · **Honest Machezano**<sup>3,4</sup> · **Javier Ventura-Cordero**<sup>5,6</sup> · **Aranzazu Louro-Lopez**<sup>2</sup> · **Virgil Joseph**<sup>3</sup> · **Lovemore C. Gwiriri**<sup>2,7</sup> · **Taro Takahashi**<sup>2,8</sup> · **Eric R. Morgan**<sup>6</sup> · **Michael R. F. Lee**<sup>2,8,9</sup> · **Casper Nyamukondiwa**<sup>3,10</sup>

✉ Andrew S. Cooke  
AnCooke@Lincoln.ac.uk

<sup>1</sup> School of Life Sciences, University of Lincoln, Lincoln, UK

<sup>2</sup> Net-Zero and Resilient Farming, Rothamsted Research, North Wyke, Okehampton, UK

<sup>3</sup> Botswana International University of Science and Technology, Private Bag 16, Palapye, Botswana

<sup>4</sup> Department of Zoology and Entomology, University of Pretoria, Private Bag X20, Hatfield 0028, Pretoria, South Africa

<sup>5</sup> Escuela Superior de Ciencias Agropecuarias, Universidad Autónoma de Campeche, Campeche, México

<sup>6</sup> School of Biological Sciences, Queen's University Belfast, Belfast, UK

<sup>7</sup> Centre for Agroecology, Water and Resilience, Coventry University, Coventry, UK

<sup>8</sup> Bristol Veterinary School, University of Bristol, Langford, UK

<sup>9</sup> School of Sustainable Food and Farming, Harper Adams University, Edgmond, UK

<sup>10</sup> Department of Zoology and Entomology, Rhodes University, Makandla 6140, South Africa