

1 **Elephant rewilding affects landscape openness and fauna habitat across a 92-year period**

2 *Christopher E Gordon*^{1,2}, *Michelle Greve*³, *Michelle Henley*^{4,5}, *Anka Bedetti*⁵, *Paul Allin*⁶ and *Jens-*
3 *Christian Svenning*¹

4 1. Centre for Biodiversity Dynamics in a Changing World and Section for Ecoinformatics and
5 Biodiversity, Department of Biology, Aarhus University, 8000 Aarhus C, Denmark

6 2. Hawkesbury Institute for the Environment, Western Sydney University, Locked Bag 1797,
7 Penrith, NSW 2751, Australia

8 3. Department of Plant and Soil Sciences, University of Pretoria, 0028, Pretoria, South Africa

9 4. Applied Behavioural Ecology and Ecosystem Research Unit, School of Environmental Sciences,
10 University of South Africa, South Africa

11 5. Elephants Alive, Mica village, 1382, Mica, South Africa

12 6. Transfrontier Africa, Hoedspruit, 1380, South Africa

13 ***Appendix S4***

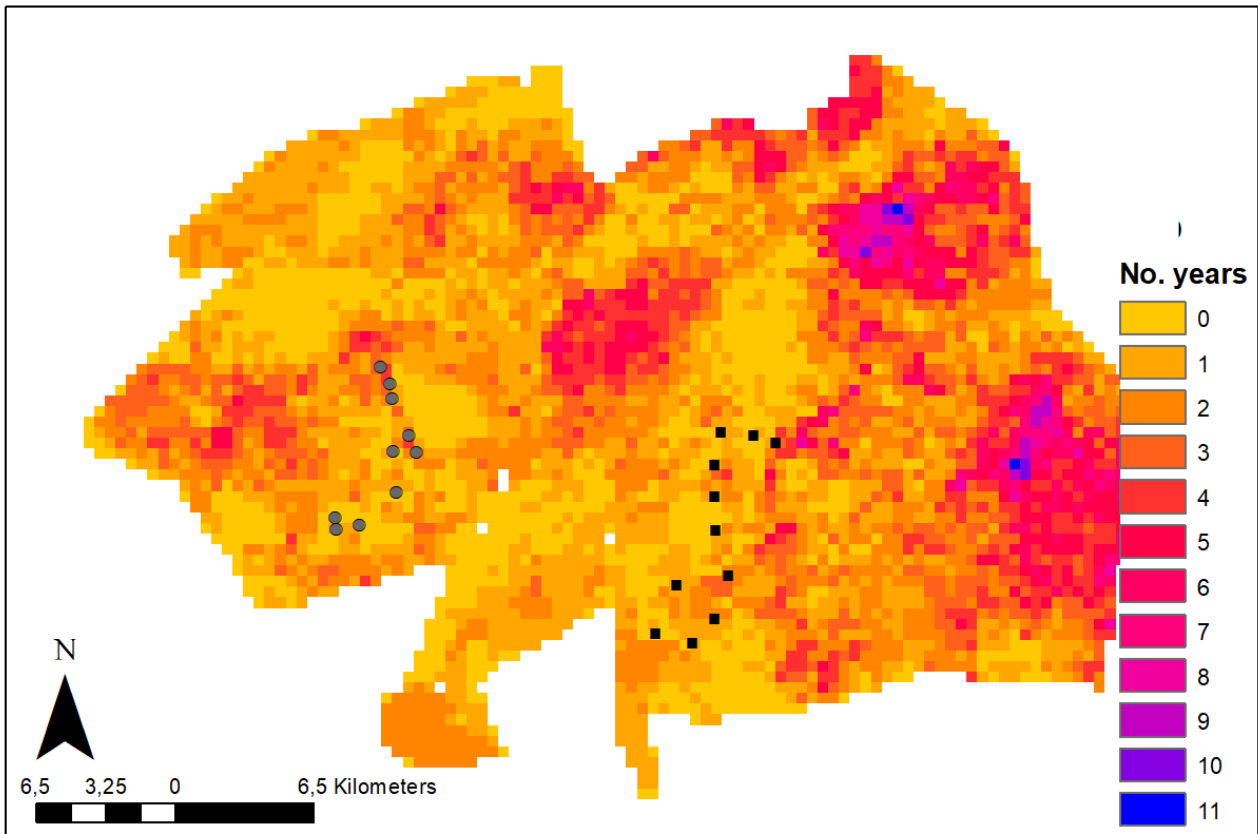
14 **Journal:** Ecological Applications

15

16

17 **Appendix S4. Map of elephant site-occurrence between 2006 – 2018.**

18 **Figure S1:** Map showing the cumulative annual core home range (elephant site-occurrence) of up
19 to 18 elephants (6 – 12 bulls, 3 – 6 matriarchs) between 2006 and 2018 assessed using GPS
20 movement data and elliptical time-density models. Values show the number of times (No. years) a
21 pixel fell within an annual elephant core home range across the sample period (n= 11 years). Points
22 show the location of our field sites within nature reserves with different elephant reintroduction
23 times: 2003 (grey circles) and 1972 (black squares). The map was clipped to the extent of these
24 reserves.



25