

## **SUPPLEMENTARY MATERIALS**

### **Cortical bone architecture of hominoid intermediate phalanges reveals functional signals of locomotion and manipulation**

Samar M. Syeda<sup>1</sup>, Zewdi J. Tsegai<sup>2</sup>, Marine Cazenave<sup>3,1,4</sup>, Matthew M. Skinner<sup>1,5</sup>, Tracy L. Kivell<sup>6,5</sup>

---

This document contains additional tables and figures that provide further information on our results presented in the manuscript.

#### **Supplementary Information 1: Assigning digits to isolated phalanges.**

The majority of our great ape sample (63%) included associated IP2-IP5 from a single hand one individual. However, individuals that did not have all associated phalanges, intermediate phalanges from the contralateral side were included. In incomplete sets of phalanges, digit number was assigned using Susman's (1979) detailed morphological descriptions. Furthermore, majority of our great ape samples (55%) were missing one phalanx, which made it possible to confidently attribute individual phalanges to a digit.

**Supplementary Table 1:** Detailed specimen information.

<b>Taxon</b>	<b>Specimen</b>	<b>Sex</b>	<b>Side</b>	<b>Subsistence</b>	<b>Collection</b>
<i>Homo sapiens</i>	NHMW-Nubian_K63	M	L	Pre-industrial	Natural History Museum, Vienna
<i>Homo sapiens</i>	NHMW-Nubian_K5.2	M	R	Pre-industrial	Natural History Museum, Vienna
<i>Homo sapiens</i>	NHMW-Nubian_J7	F	R	Pre-industrial	Natural History Museum, Vienna
<i>Homo sapiens</i>	Qafzeh_9	M	R	Pre-industrial	The Sackler School of Medicine at Tel Aviv University
<i>Homo sapiens</i>	Qafzeh_8	UK	R/L	Pre-industrial	The Sackler School of Medicine at Tel Aviv University
<i>Homo sapiens</i>	OHALO_II_H2	M	R/L	Pre-industrial	The Sackler School of Medicine at Tel Aviv University
<i>Homo sapiens</i>	UNIFL_4865	M	R	Post-industrial	University of Florence
<i>Homo sapiens</i>	UNIFL_4887	F	R	Post-industrial	University of Florence
<i>Homo sapiens</i>	GAUG-Inden_113	M	L	Post-industrial	Georg-August-University Goettingen, Anthropology Collection
<i>Homo sapiens</i>	GAUG-Inden_117	UK	L	Post-industrial	Georg-August-University Goettingen, Anthropology Collection
<i>Homo sapiens</i>	GAUG-Inden_119	M	R	Post-industrial	Georg-August-University Goettingen, Anthropology Collection
<i>Homo sapiens</i>	GAUG-Inden_243	M	L	Post-industrial	Georg-August-University Goettingen, Anthropology Collection
<i>Homo sapiens</i>	Barma_Grande_2	M	R	Pre-industrial	Museo Nazionale Preistorico dei Balzi Rossi
<i>Homo sapiens</i>	ARENE_CANDIDE_2	M	R/L	Pre-industrial	the Museo Archeologico del Finale
<i>Homo sapiens</i>	DCW_AM_3_0_2	UK	R/L	Pre-industrial	The Duckworth Collection, University of Cambridge
<i>Homo sapiens</i>	DCW_OC_1_0_141	UK	R/L	Pre-industrial	The Duckworth Collection, University of Cambridge
<i>Homo sapiens</i>	DCW_OC_1_0_26	UK	L	Pre-industrial	The Duckworth Collection, University of Cambridge
<i>Homo sapiens</i>	81-H172-H	M	R/L	Post-industrial	Mary Rose Trust
<i>Homo sapiens</i>	DV-13	M	L	Pre-industrial	Institute of Archaeology, Czech Republic
<i>Homo sapiens</i>	DV-14	M	R	Pre-industrial	Institute of Archaeology, Czech Republic
<i>Homo sapiens</i>	DV-15	M	R/L	Pre-industrial	Institute of Archaeology, Czech Republic
<i>Homo sapiens</i>	DV-16	M	R/L	Pre-industrial	Institute of Archaeology, Czech Republic
<i>Pan paniscus</i>	MRAC_27698	F	L	Wild	Royal Museum for Central Africa, Tervuren
<i>Pan paniscus</i>	MRAC_29042	F	R	Wild	Royal Museum for Central Africa, Tervuren
<i>Pan paniscus</i>	MRAC_29045	F	L	Wild	Royal Museum for Central Africa, Tervuren
<i>Pan paniscus</i>	MRAC_29052	M	R	Wild	Royal Museum for Central Africa, Tervuren
<i>Pan paniscus</i>	MRAC_27696	M	L	Wild	Royal Museum for Central Africa, Tervuren
<i>Pan paniscus</i>	MRAC_29060	F	R	Wild	Royal Museum for Central Africa, Tervuren
<i>Pan troglodytes</i>	MPITC_11778	F	R	Wild	Max Planck Institute for Evolutionary Anthropology, Tai Chimpanzee Collection
<i>Pan troglodytes</i>	MPITC_14996	F	L	Wild	Max Planck Institute for Evolutionary Anthropology, Tai Chimpanzee Collection

<i>Pan troglodytes</i>	NH_CAM1_204	F	L	Wild	Powell-Cotton Museum
<i>Pan troglodytes</i>	NH_CAM2_301	F	R	Wild	Powell-Cotton Museum
<i>Pan troglodytes</i>	NH_MER_279	F	L	Wild	Powell-Cotton Museum
<i>Pan troglodytes</i>	NH_MER35_86	F	L	Wild	Powell-Cotton Museum
<i>Pan troglodytes</i>	NH_MER35_105	F	R	Wild	Powell-Cotton Museum
<i>Pan troglodytes</i>	MPITC_11789	M	L	Wild	Max Planck Institute for Evolutionary Anthropology, Tai Chimp Collection
<i>Pan troglodytes</i>	MPITC_11781	M	L	Wild	Max Planck Institute for Evolutionary Anthropology, Tai Chimp Collection
<i>Pan troglodytes</i>	ZSM_AP-122	M	R	Wild	Bavarian State Collection of Zoology
<i>Pan troglodytes</i>	NH_MER33_712	M	R	Wild	Powell-Cotton Museum
<i>Pan troglodytes</i>	NH_MER33_724	M	L	Wild	Powell-Cotton Museum
<i>Pan troglodytes</i>	NH_MER32_401	M	L	Wild	Powell-Cotton Museum
<i>Pan troglodytes</i>	NH_MER33_440	M	R	Wild	Powell-Cotton Museum
<i>Pan troglodytes</i>	NH_MER36_254	M	L	Wild	Powell-Cotton Museum
<i>Gorilla gorilla</i>	ZMB_11642	UK	R	Wild	Natural History Museum, Berlin
<i>Gorilla gorilla</i>	ZMB_83545	M	R	Wild	Natural History Museum, Berlin
<i>Gorilla gorilla</i>	PC_MER_95	F	R	Wild	Powell-Cotton Museum
<i>Gorilla gorilla</i>	PC_MER_135	M	L	Wild	Powell-Cotton Museum
<i>Gorilla gorilla</i>	PC_MER_264	M	L	Wild	Powell-Cotton Museum
<i>Gorilla gorilla</i>	PC_MER_300	F	R	Wild	Powell-Cotton Museum
<i>Gorilla gorilla</i>	PC_MER_372	M	R	Wild	Powell-Cotton Museum
<i>Gorilla gorilla</i>	PC_MER_962	M	R	Wild	Powell-Cotton Museum
<i>Gorilla gorilla</i>	PC_MER1_29	F	R	Wild	Powell-Cotton Museum
<i>Gorilla gorilla</i>	PC_MER_696	F	R	Wild	Powell-Cotton Museum
<i>Gorilla gorilla</i>	PC_MER_856	F	L	Wild	Powell-Cotton Museum
<i>Gorilla gorilla</i>	PC_ZVI_32	M	R	Wild	Powell-Cotton Museum
<i>Gorilla gorilla</i>	NH_MER33_755	F	R	Wild	Powell-Cotton Museum
<i>Gorilla gorilla</i>	NH_MER33_461	M	R	Wild	Powell-Cotton Museum
<i>Gorilla gorilla</i>	NH_CAM1_106	M	R	Wild	Powell-Cotton Museum
<i>Gorilla gorilla</i>	NH_CAM1_105	M	R	Wild	Powell-Cotton Museum
<i>Gorilla gorilla</i>	NH_MER35_150	F	R	Wild	Powell-Cotton Museum
<i>Gorilla gorilla</i>	NH_CAM1_98	F	L	Wild	Powell-Cotton Museum
<i>Gorilla gorilla</i>	NH_MER35_136	F	L	Wild	Powell-Cotton Museum
<i>Gorilla gorilla</i>	NH_MER35_139	F	L	Wild	Powell-Cotton Museum

<i>Gorilla gorilla</i>	NH_FC_130	M	L	Wild	Powell-Cotton Museum
<i>Gorilla gorilla</i>	NH_FC_123	M	L	Wild	Powell-Cotton Museum
<i>Pongo pygmaeus</i>	ZSM_1907_0633b	F	R	Wild	Bavarian State Collection of Zoology
<i>Pongo pygmaeus</i>	ZSM_1907_0629b	M	R	Wild	Bavarian State Collection of Zoology
<i>Pongo pygmaeus</i>	ZSM_1907_0660	F	R	Wild	Bavarian State Collection of Zoology
<i>Pongo pygmaeus</i>	ZSM_AP-120	M	L	Wild	Bavarian State Collection of Zoology
<i>Pongo pygmaeus</i>	ZSM_1907_0483	F	R	Wild	Bavarian State Collection of Zoology
<i>Pongo pygmaeus</i>	ZSM_1909_0801	M	R	Wild	Bavarian State Collection of Zoology

---

Note: M = male; F = female; R = right; L = left; UK = unknown sex/side; R/L = to have all four digits represented, some phalanges were from the right side of the body and some from the left.

**S. Table 2:** Mean values of standardised and raw cross-sectional properties across species at 35%, 50%, and 65% of the phalanx

		SCALED				RAW			
		<i>H. sapiens</i>	<i>Pan</i>	<i>Gorilla</i>	<i>Pongo</i>	<i>H. sapiens</i>	<i>Pan</i>	<i>Gorilla</i>	<i>Pongo</i>
<b>35% cross-section</b>									
IP2	CA (mm <sup>2</sup> )	0.625	0.868	1.234	0.643	15.936	27.553	43.099	24.022
	Z <sub>pol</sub> (mm <sup>3</sup> )	1.410	1.430	2.834	1.097	36.053	45.378	100.153	41.096
	J (mm <sup>4</sup> )	6.973	6.628	19.082	4.905	178.488	210.555	681.145	185.075
IP3	CA (mm <sup>2</sup> )	0.755	0.943	1.317	0.643	22.644	38.835	56.047	28.515
	Z <sub>pol</sub> (mm <sup>3</sup> )	1.780	1.858	3.301	1.189	53.838	76.738	142.027	52.991
	J (mm <sup>4</sup> )	10.000	10.617	25.297	6.123	304.533	439.528	1099.651	273.944
IP4	CA (mm <sup>2</sup> )	0.704	0.880	1.231	0.631	20.923	33.342	49.607	28.160
	Z <sub>pol</sub> (mm <sup>3</sup> )	1.576	1.539	2.745	1.178	46.991	58.419	111.654	52.782
	J (mm <sup>4</sup> )	8.380	7.644	19.775	5.984	251.109	290.972	812.395	269.181
IP5	CA (mm <sup>2</sup> )	0.593	0.807	1.115	0.615	12.639	22.273	35.015	22.556
	Z <sub>pol</sub> (mm <sup>3</sup> )	1.123	1.226	2.216	0.996	24.218	33.848	70.283	37.117
	J (mm <sup>4</sup> )	4.867	4.742	12.668	4.398	105.753	131.814	406.681	167.140
<b>50% cross-section</b>									
IP2	CA (mm <sup>2</sup> )	0.781	0.832	1.237	0.692	19.971	26.405	43.195	25.825
	Z <sub>pol</sub> (mm <sup>3</sup> )	1.386	1.114	2.393	1.072	35.567	35.385	84.628	40.440
	J (mm <sup>4</sup> )	5.809	4.700	14.901	4.876	149.296	149.713	532.603	185.821
IP3	CA (mm <sup>2</sup> )	0.872	0.881	1.394	0.665	26.259	36.228	59.326	29.470
	Z <sub>pol</sub> (mm <sup>3</sup> )	1.657	1.437	3.146	1.146	50.354	59.256	135.284	51.055
	J (mm <sup>4</sup> )	8.087	7.363	23.597	5.708	247.291	304.615	1025.602	255.341
IP4	CA (mm <sup>2</sup> )	0.827	0.802	1.238	0.655	24.538	30.359	49.905	29.158
	Z <sub>pol</sub> (mm <sup>3</sup> )	1.465	1.153	2.464	1.137	43.669	43.787	100.246	50.938
	J (mm <sup>4</sup> )	6.797	5.120	16.924	5.421	203.917	194.833	696.215	243.571
IP5	CA (mm <sup>2</sup> )	0.721	0.753	1.082	0.650	15.451	20.753	34.007	23.962
	Z <sub>pol</sub> (mm <sup>3</sup> )	1.088	0.922	1.775	0.982	23.542	25.547	56.297	37.006
	J (mm <sup>4</sup> )	4.107	3.294	9.312	4.428	89.507	92.189	298.928	170.861
<b>65% cross-section</b>									
IP2	CA (mm <sup>2</sup> )	0.754	0.756	1.135	0.619	19.315	23.973	39.651	23.075
	Z <sub>pol</sub> (mm <sup>3</sup> )	1.179	0.950	1.905	0.875	30.230	30.195	67.332	32.976
	J (mm <sup>4</sup> )	4.660	3.619	10.917	3.344	119.741	115.203	390.060	127.663
IP3	CA (mm <sup>2</sup> )	0.843	0.811	1.205	0.586	25.349	33.375	51.288	25.967
	Z <sub>pol</sub> (mm <sup>3</sup> )	1.394	1.243	2.325	0.887	42.183	51.297	99.916	39.549
	J (mm <sup>4</sup> )	6.186	5.616	14.890	3.639	188.394	232.230	645.774	162.860
IP4	CA (mm <sup>2</sup> )	0.801	0.745	1.088	0.573	23.760	28.227	43.793	25.512
	Z <sub>pol</sub> (mm <sup>3</sup> )	1.247	1.032	1.924	0.886	37.113	39.214	78.219	39.765
	J (mm <sup>4</sup> )	5.237	4.079	11.320	3.615	156.481	155.166	463.971	1.62.803
IP5	CA (mm <sup>2</sup> )	0.666	0.712	1.002	0.570	14.323	19.635	31.461	20.913
	Z <sub>pol</sub> (mm <sup>3</sup> )	0.939	0.834	1.446	0.782	20.374	23.115	46.438	29.355
	J (mm <sup>4</sup> )	3.304	2.790	6.956	2.871	72.250	77.972	223.201	110.038

**Abbreviations:** CA = cortical area; Z<sub>pol</sub> = polar section modulus; J = polar second moment of area.

**S. Table 3:** Significance values for post hoc comparisons of cross-sectional properties across species at 35%, 50%, and 65% of the phalanx

			<b>35%</b>			<b>50%</b>			<b>65%</b>		
			<i>Pan</i>	<i>Gorilla</i>	<i>Pongo</i>	<i>Pan</i>	<i>Gorilla</i>	<i>Pongo</i>	<i>Pan</i>	<i>Gorilla</i>	<i>Pongo</i>
IP2	CA	<i>H.sapiens</i>	<b>0.025</b>	<b>&lt;0.001</b>	NS	NS	<b>&lt;0.001</b>	NS	NS	<b>&lt;0.001</b>	NS
		<i>Pan</i>		<b>0.018</b>	NS		<b>&lt;0.001</b>	NS		<b>&lt;0.001</b>	NS
		<i>Gorilla</i>			<b>&lt;0.001</b>			<b>&lt;0.001</b>			<b>&lt;0.001</b>
	$Z_{pol}$	<i>H.sapiens</i>	NS	<b>&lt;0.001</b>	NS	NS	<b>0.009</b>	NS	NS	<b>0.004</b>	NS
		<i>Pan</i>		<b>&lt;0.001</b>	NS		<b>&lt;0.001</b>	NS		<b>&lt;0.001</b>	NS
		<i>Gorilla</i>			<b>&lt;0.001</b>			<b>&lt;0.001</b>			<b>&lt;0.001</b>
	J	<i>H.sapiens</i>	NS	<b>&lt;0.001</b>	NS	NS	<b>&lt;0.001</b>	NS	NS	<b>0.007</b>	NS
		<i>Pan</i>		<b>&lt;0.001</b>	NS		<b>&lt;0.001</b>	NS		<b>&lt;0.001</b>	NS
		<i>Gorilla</i>			<b>&lt;0.001</b>			<b>&lt;0.001</b>			<b>&lt;0.001</b>
IP3	CA	<i>H.sapiens</i>	NS	<b>&lt;0.001</b>	NS	NS	<b>&lt;0.001</b>	NS	NS	<b>&lt;0.001</b>	NS
		<i>Pan</i>		<b>0.004</b>	NS		<b>&lt;0.001</b>	NS		<b>&lt;0.001</b>	NS
		<i>Gorilla</i>			<b>&lt;0.001</b>			<b>&lt;0.001</b>			<b>&lt;0.001</b>
	$Z_{pol}$	<i>H.sapiens</i>	NS	<b>&lt;0.001</b>	NS	NS	<b>&lt;0.001</b>	NS	NS	<b>&lt;0.001</b>	NS
		<i>Pan</i>		<b>&lt;0.001</b>	NS		<b>&lt;0.001</b>	NS		<b>&lt;0.001</b>	NS
		<i>Gorilla</i>			<b>&lt;0.001</b>			<b>&lt;0.001</b>			<b>&lt;0.001</b>
	J	<i>H.sapiens</i>	NS	<b>&lt;0.001</b>	NS	NS	<b>&lt;0.001</b>	NS	NS	<b>&lt;0.001</b>	NS
		<i>Pan</i>		<b>&lt;0.001</b>	NS		<b>&lt;0.001</b>	NS		<b>&lt;0.001</b>	NS
		<i>Gorilla</i>			<b>&lt;0.001</b>			<b>&lt;0.001</b>			<b>&lt;0.001</b>
IP4	CA	<i>H.sapiens</i>	NS	<b>&lt;0.001</b>	NS	NS	<b>&lt;0.001</b>	NS	NS	<b>0.002</b>	NS
		<i>Pan</i>		<b>0.002</b>	NS		<b>&lt;0.001</b>	NS		<b>&lt;0.001</b>	NS
		<i>Gorilla</i>			<b>&lt;0.001</b>			<b>&lt;0.001</b>			<b>&lt;0.001</b>
	$Z_{pol}$	<i>H.sapiens</i>	NS	<b>&lt;0.001</b>	NS	NS	<b>0.004</b>	NS	NS	<b>0.007</b>	NS
		<i>Pan</i>		<b>&lt;0.001</b>	NS		<b>&lt;0.001</b>	NS		<b>&lt;0.001</b>	NS
		<i>Gorilla</i>			<b>&lt;0.001</b>			<b>&lt;0.001</b>			<b>&lt;0.001</b>
	J	<i>H.sapiens</i>	NS	<b>&lt;0.001</b>	NS	NS	<b>&lt;0.001</b>	NS	NS	<b>0.003</b>	NS
		<i>Pan</i>		<b>&lt;0.001</b>	NS		<b>&lt;0.001</b>	NS		<b>&lt;0.001</b>	NS
		<i>Gorilla</i>			<b>&lt;0.001</b>			<b>&lt;0.001</b>			<b>&lt;0.001</b>
IP5	CA	<i>H.sapiens</i>	NS	<b>&lt;0.001</b>	NS	NS	<b>0.002</b>	NS	NS	<b>0.001</b>	NS
		<i>Pan</i>		<b>0.039</b>	NS		<b>0.002</b>	NS		<b>0.006</b>	NS
		<i>Gorilla</i>			<b>0.003</b>			<b>0.004</b>			<b>0.002</b>
	$Z_{pol}$	<i>H.sapiens</i>	NS	<b>0.001</b>	NS	NS	NS	NS	NS	<b>0.041</b>	NS
		<i>Pan</i>		<b>0.001</b>	NS		<b>&lt;0.001</b>	NS		<b>&lt;0.001</b>	NS
		<i>Gorilla</i>			<b>0.007</b>			NS			<b>0.016</b>
	J	<i>H.sapiens</i>	NS	<b>0.003</b>	NS	NS	<b>0.026</b>	NS	NS	<b>0.027</b>	NS
		<i>Pan</i>		<b>&lt;0.001</b>	NS		<b>&lt;0.001</b>	NS		<b>&lt;0.001</b>	NS
		<i>Gorilla</i>			<b>0.009</b>			NS			<b>0.015</b>

**Abbreviations:** CA = cortical area;  $Z_{pol}$  = polar section modulus; J = polar second moment of area; NS = not significant (p>0.05).

**S. Table 4:** Significance values for post hoc comparisons of cross-sectional properties within species, across the digits at 35%, 50% and 65% of the phalanx.

			<u>35%</u>			<u>50%</u>			<u>65%</u>		
			IP3	IP4	IP5	IP3	IP4	IP5	IP3	IP4	IP5
<i>H. sapiens</i>	CA	IP2	NS	NS	NS	NS	NS	NS	NS	NS	NS
		IP3		NS	NS		NS	NS		NS	NS
		IP4			NS			NS			NS
	Z <sub>pol</sub>	IP2	NS	NS	NS	NS	NS	NS	NS	NS	NS
		IP3		NS	<b>0.009</b>		NS	<b>0.023</b>		NS	<b>0.015</b>
		IP4			NS			NS			NS
	J	IP2	NS	NS	NS	NS	NS	NS	NS	NS	NS
		IP3		NS	<b>&lt;0.001</b>		NS	<b>0.003</b>		NS	<b>0.005</b>
		IP4			<b>0.012</b>			<b>0.035</b>			NS
<i>Pan</i>	CA	IP2	NS	NS	NS	NS	NS	NS	NS	NS	NS
		IP3		NS	<b>0.035</b>		NS	<b>0.021</b>		NS	NS
		IP4			NS			NS			NS
	Z <sub>pol</sub>	IP2	NS	NS	NS	NS	NS	NS	<b>0.013</b>	NS	NS
		IP3		NS	<b>&lt;0.001</b>		NS	<b>&lt;0.001</b>		NS	<b>&lt;0.001</b>
		IP4			NS			NS			NS
	J	IP2	<b>0.010</b>	NS	NS	<b>0.007</b>	NS	NS	<b>0.004</b>	NS	NS
		IP3		NS	<b>&lt;0.001</b>		<b>0.039</b>	<b>&lt;0.001</b>		NS	<b>&lt;0.001</b>
		IP4			<b>0.006</b>			<b>0.008</b>			<b>0.011</b>
<i>Gorilla</i>	CA	IP2	NS	NS	NS	NS	NS	NS	NS	NS	NS
		IP3		NS	NS		NS	<b>0.002</b>		NS	<b>0.022</b>
		IP4			NS			NS			NS
	Z <sub>pol</sub>	IP2	NS	NS	NS	NS	NS	NS	NS	NS	NS
		IP3		NS	<b>0.004</b>		NS	<b>&lt;0.001</b>		NS	<b>&lt;0.001</b>
		IP4			NS			NS			NS
	J	IP2	NS	NS	NS	NS	NS	NS	NS	NS	NS
		IP3		NS	<b>&lt;0.001</b>		NS	<b>&lt;0.002</b>		NS	<b>&lt;0.001</b>
		IP4			NS			<b>0.034</b>			NS

Abbreviations: CA = cortical area; Z<sub>pol</sub> = polar section modulus; J = polar second moment of area; NS = not significant (p>0.05).

Note: The intermediate phalanges *Pongo* are not represented because they did not show significant differences.

**S. Table 5:** Significance values for post hoc comparisons of CA across species at different cross-sectional levels

			50%	65%	
IP2	<i>H. sapiens</i>	CA	35%	<b>0.046</b>	NS
			50%		NS
	<i>Pan</i>	J	35%	NS	<b>0.003</b>
			50%		NS
		CA	35%	NS	<b>0.049</b>
			50%		NS
	<i>Gorilla</i>	Z <sub>pol</sub>	35%	<b>0.043</b>	<b>&lt;0.001</b>
			50%		NS
		J	35%	<b>0.035</b>	<b>&lt;0.001</b>
			50%		NS
		Z <sub>pol</sub>	35%	NS	<b>0.003</b>
			50%		NS
IP3	<i>H. sapiens</i>	J	35%	NS	<b>0.019</b>
			50%		NS
	<i>Pan</i>	CA	35%	NS	<b>0.026</b>
			50%		NS
		Z <sub>pol</sub>	35%	<b>0.029</b>	<b>&lt;0.001</b>
			50%		NS
	<i>Gorilla</i>	J	35%	<b>0.036</b>	<b>&lt;0.001</b>
			50%		NS
		CA	35%	NS	NS
			50%		<b>0.019</b>
		Z <sub>pol</sub>	35%	NS	<b>0.003</b>
			50%		<b>0.018</b>
IP4	<i>H. sapiens</i>	J	35%	NS	<b>0.005</b>
			50%		NS
	<i>Pan</i>	CA	35%	NS	<b>&lt;0.001</b>
			50%		NS
		Z <sub>pol</sub>	35%	<b>0.001</b>	<b>&lt;0.001</b>
			50%		NS
	<i>Gorilla</i>	J	35%	<b>0.001</b>	<b>&lt;0.001</b>
			50%		NS
		Z <sub>pol</sub>	35%	NS	NS
			50%		<b>0.008</b>
		J	35%	NS	NS
			50%		<b>0.003</b>
IP5	<i>Pan</i>	Z <sub>pol</sub>	35%	NS	<b>0.011</b>
			50%		NS
	<i>Gorilla</i>	J	35%	NS	<b>0.014</b>
			50%		NS
		Z <sub>pol</sub>	35%	NS	<b>0.009</b>
			50%		NS
J	35%	NS	<b>0.006</b>		
	50%		NS		

Abbreviations: NS = not significant (  $p > 0.05$ ).

Note: Results of some CSG properties and taxa are not reported here because they did not show significant differences.



**S. Table 6:** Summary statistics testing the relationship between phalangeal curvature and cortical thickness of the phalangeal shaft for the total sample and within species. All four digits were pooled.

	R <sup>2</sup>	p
<b>IP2</b>		
<i>H. sapiens</i>	0.295	<b>0.024</b>
<i>Pan</i>	0.017	NS
<i>Gorilla</i>	0.036	NS
<i>Pongo</i>	0.381	NS
<b>IP3</b>		
<i>H. sapiens</i>	0.046	NS
<i>Pan</i>	0.028	NS
<i>Gorilla</i>	0.019	NS
<i>Pongo</i>	0.073	<b>0.030</b>
<b>IP4</b>		
<i>H. sapiens</i>	0.113	NS
<i>Pan</i>	0.001	NS
<i>Gorilla</i>	0.036	NS
<i>Pongo</i>	0.381	NS
<b>IP5</b>		
<i>H. sapiens</i>	0.247	NS
<i>Pan</i>	0.076	NS
<i>Gorilla</i>	0.321	<b>0.022</b>
<i>Pongo</i>	0.262	NS

Abbreviations: NS = not significant ( p>0.05).

**S. Table 7:** Summary statistics testing the relationship between median bar and cortical thickness of the phalangeal shaft for IP3

	R <sup>2</sup>	p
Total sample	0.083	<b>&lt;0.001</b>
<i>H. sapiens</i>	-0.039	<b>&lt;0.001</b>
<i>Pan</i>	-0.040	<b>&lt;0.001</b>
<i>Gorilla</i>	0	<b>&lt;0.001</b>
<i>Pongo</i>	0.321	NS

Abbreviations: NS = not significant ( p>0.05).

**S. Table 8:** Summary statistics testing the relationship between FSR depth and cortical thickness of the phalangeal shaft for IP3

	R <sup>2</sup>	p
Total sample	-0.016	<b>&lt;0.001</b>
<i>H. sapiens</i>	-0.006	<b>&lt;0.001</b>
<i>Pan</i>	-0.057	<b>&lt;0.001</b>
<i>Gorilla</i>	-0.058	<b>&lt;0.001</b>
<i>Pongo</i>	-0.248	NS

Abbreviations: NS = not significant ( p>0.05).

**S. Table 9:** Summary statistics testing the relationship between FSR length and cortical thickness of the phalangeal shaft for IP3

	R <sup>2</sup>	p
Total sample	-0.009	< <b>0.001</b>
<i>H. sapiens</i>	-0.048	< <b>0.001</b>
<i>Pan</i>	-0.002	<b>0.001</b>
<i>Gorilla</i>	0.085	<b>0.001</b>
<i>Pongo</i>	0.172	NS

Abbreviations: NS = not significant ( p>0.05).

**S. Table 10:** Summary statistics testing the relationship between median bar and FSR length of the phalangeal shaft for IP3

	R <sup>2</sup>	p
Total sample	-0.021	NS
<i>H. sapiens</i>	0.038	NS
<i>Pan</i>	-0.016	NS
<i>Gorilla</i>	-0.059	NS
<i>Pongo</i>	-0.237	NS

Abbreviations: NS = not significant ( p>0.05).

**S. Table 11:** Summary statistics testing the relationship between median bar and FSR depth of the phalangeal shaft for IP3

	R <sup>2</sup>	p
Total sample	-0.023	< <b>0.001</b>
<i>H. sapiens</i>	-0.068	<b>0.016</b>
<i>Pan</i>	-0.075	<b>0.031</b>
<i>Gorilla</i>	0.001	< <b>0.001</b>
<i>Pongo</i>	-0.126	NS

Abbreviations: NS = not significant ( p>0.05).

**S. Table 12:** Paired samples t-tests of Scaled proximal phalanx vs. intermediate phalanx CA across species

		<i>H. sapiens</i>	<i>Pan</i>	<i>Gorilla</i>	<i>Pongo</i>
35%					
Digit 2	Proximal mean	0.692	0.759	1.205	0.625
	Intermediate mean	0.643	0.868	1.212	0.643
	p	NS	<b>0.034</b>	NS	NS
Digit 3	Proximal mean	0.702	0.851	1.296	0.598
	Intermediate mean	0.769	0.952	1.319	0.642
	p	NS	<b>0.049</b>	NS	NS
Digit 4	Proximal mean	0.611	0.806	1.278	0.550
	Intermediate mean	0.664	0.880	1.241	0.631
	p	NS	<b>0.049</b>	NS	NS
Digit 5	Proximal mean	0.517	0.702	1.108	0.503
	Intermediate mean	0.538	0.787	1.115	0.615
	p	NS	NS	NS	NS
50%					
Digit 2	Proximal mean	0.767	0.832	1.412	0.636
	Intermediate mean	0.781	0.832	1.237	0.692
	p	NS	NS	NS	NS
Digit 3	Proximal mean	0.779	0.978	1.507	0.663
	Intermediate mean	0.872	0.881	1.394	0.665
	p	NS	NS	NS	NS
Digit 4	Proximal mean	0.750	0.893	1.315	0.672
	Intermediate mean	0.827	0.802	1.238	0.655
	p	NS	NS	NS	NS
Digit 5	Proximal mean	0.664	0.711	1.246	0.567
	Intermediate mean	0.721	0.753	1.082	0.650
	p	NS	NS	NS	NS
65%					
Digit 2	Proximal mean	0.817	0.860	1.417	0.677
	Intermediate mean	0.754	0.756	1.135	0.619
	p	NS	<b>0.034</b>	NS	NS
Digit 3	Proximal mean	0.854	1.031	1.563	0.732
	Intermediate mean	0.843	0.811	1.205	0.586
	p	NS	<b>0.049</b>	NS	NS
Digit 4	Proximal mean	0.823	0.940	1.389	0.736
	Intermediate mean	0.801	0.745	1.088	0.573
	p	NS	<b>0.049</b>	NS	NS
Digit 5	Proximal mean	0.688	0.719	1.263	0.602
	Intermediate mean	0.666	0.712	1.002	0.570
	p	NS	NS	NS	NS

Abbreviations: NS = not significant (p>0.05).

**S. Table 13:** Paired samples t-tests of Scaled proximal phalanx vs. intermediate phalanx  $Z_{POL}$  across species

		<i>H. sapiens</i>	<i>Pan</i>	<i>Gorilla</i>	<i>Pongo</i>
35%					
Digit 2	Proximal mean	1.815	1.559	4.214	1.462
	Intermediate mean	1.410	1.430	2.834	1.097
	p	<b>0.023</b>	NS	<b>0.018</b>	<b>0.036</b>
Digit 3	Proximal mean	1.975	2.257	4.950	1.669
	Intermediate mean	1.780	1.858	3.301	1.189
	p	NS	<b>0.043</b>	<b>0.003</b>	NS
Digit 4	Proximal mean	1.672	1.857	4.003	1.742
	Intermediate mean	1.576	1.539	2.745	1.178
	p	NS	<b>0.012</b>	<b>0.002</b>	NS
Digit 5	Proximal mean	1.314	1.265	2.986	1.152
	Intermediate mean	1.123	1.226	2.216	0.996
	p	NS	NS	<b>0.020</b>	NS
50%					
Digit 2	Proximal mean	1.678	1.456	4.317	1.302
	Intermediate mean	1.386	1.114	2.393	1.072
	p	<b>0.012</b>	<b>0.008</b>	<b>&lt;0.001</b>	NS
Digit 3	Proximal mean	1.838	2.196	5.018	1.496
	Intermediate mean	1.657	1.437	3.146	1.146
	p	NS	<b>0.002</b>	<b>&lt;0.001</b>	<b>0.035</b>
Digit 4	Proximal mean	1.637	1.740	4.020	1.529
	Intermediate mean	1.465	1.153	2.464	1.137
	p	NS	<b>&lt;0.001</b>	<b>&lt;0.001</b>	NS
Digit 5	Proximal mean	1.207	1.067	3.178	1.000
	Intermediate mean	1.088	0.922	1.775	0.982
	p	NS	NS	<b>&lt;0.001</b>	NS
65%					
Digit 2	Proximal mean	1.626	1.514	3.724	1.424
	Intermediate mean	1.179	0.950	1.905	0.875
	p	<b>0.013</b>	<b>&lt;0.001</b>	<b>&lt;0.001</b>	<b>0.033</b>
Digit 3	Proximal mean	1.826	2.277	4.635	1.732
	Intermediate mean	1.394	1.243	2.325	0.887
	p	<b>0.035</b>	<b>&lt;0.001</b>	<b>&lt;0.001</b>	<b>0.003</b>
Digit 4	Proximal mean	1.675	1.847	3.733	1.740
	Intermediate mean	1.247	1.032	1.924	0.886
	p	<b>0.032</b>	<b>&lt;0.001</b>	<b>&lt;0.001</b>	NS
Digit 5	Proximal mean	1.121	1.096	2.821	1.106
	Intermediate mean	0.939	0.834	1.446	0.782
	p	NS	<b>0.002</b>	<b>&lt;0.001</b>	NS

Abbreviations: NS = not significant ( $p > 0.05$ ).

**S. Table 14:** Paired samples t-tests of Scaled proximal phalanx vs. intermediate phalanx J across species

		<i>H. sapiens</i>	<i>Pan</i>	<i>Gorilla</i>	<i>Pongo</i>
<b>35%</b>					
Digit 2	Proximal mean	10.380	7.459	37.262	6.864
	Intermediate mean	6.973	6.628	19.082	4.905
	p	<b>0.009</b>	NS	<b>0.007</b>	NS
Digit 3	Proximal mean	11.606	13.102	48.787	8.446
	Intermediate mean	10.000	10.617	25.297	6.123
	p	NS	NS	<b>0.001</b>	NS
Digit 4	Proximal mean	9.549	9.564	36.234	9.119
	Intermediate mean	8.380	7.644	19.775	5.984
	p	NS	<b>0.028</b>	<b>&lt;0.001</b>	NS
Digit 5	Proximal mean	6.613	4.751	22.827	4.888
	Intermediate mean	4.867	4.742	12.668	4.398
	p	NS	NS	<b>0.006</b>	NS
<b>50%</b>					
Digit 2	Proximal mean	9.092	7.894	37.632	6.901
	Intermediate mean	5.809	4.700	14.901	4.876
	p	<b>0.002</b>	<b>0.003</b>	<b>&lt;0.001</b>	NS
Digit 3	Proximal mean	10.479	14.420	49.767	8.330
	Intermediate mean	8.087	7.363	23.597	5.708
	p	<b>0.047</b>	<b>0.002</b>	<b>&lt;0.001</b>	<b>0.030</b>
Digit 4	Proximal mean	9.076	10.237	36.357	8.800
	Intermediate mean	6.797	5.120	16.924	5.421
	p	NS	<b>&lt;0.001</b>	<b>&lt;0.001</b>	NS
Digit 5	Proximal mean	5.683	4.509	24.766	4.805
	Intermediate mean	4.107	3.294	9.312	4.428
	p	NS	<b>0.030</b>	<b>&lt;0.001</b>	NS
<b>65%</b>					
Digit 2	Proximal mean	8.625	8.158	31.730	8.846
	Intermediate mean	4.660	3.619	10.917	3.344
	p	<b>0.003</b>	<b>&lt;0.001</b>	<b>&lt;0.001</b>	<b>0.005</b>
Digit 3	Proximal mean	10.507	15.152	45.513	11.540
	Intermediate mean	6.186	5.616	14.890	3.639
	p	<b>0.003</b>	<b>&lt;0.001</b>	<b>&lt;0.001</b>	<b>0.002</b>
Digit 4	Proximal mean	9.373	10.891	32.763	11.794
	Intermediate mean	5.237	4.079	11.320	3.615
	p	<b>0.001</b>	<b>&lt;0.001</b>	<b>&lt;0.001</b>	<b>0.031</b>
Digit 5	Proximal mean	4.882	4.355	20.961	6.031
	Intermediate mean	3.304	2.790	6.956	2.871
	p	NS	<b>&lt;0.001</b>	<b>&lt;0.001</b>	NS

Abbreviations: NS = not significant ( $p > 0.05$ ).

**Supplementary Figure 1:** Cortical bone thickness distribution maps of each specimen included in the study. Specimen IDs are listed under each individual map.

**Supplementary Figure 2:** 3D PCAs of cortical bone distribution of (A) IP2; (B) IP3; (C) IP4; and (D) IP5.

**Supplementary Figure 3:** Mean cortical thickness across the digits of (A) *Pongo*; (B) *Gorilla*; (C) *Pan*; (D) *H. sapiens*. \* =  $p < 0.05$ ; \*\* =  $p < 0.01$ ; \*\*\* =  $p < 0.001$ .

**Supplementary Figure 4:** Ratio of dorsal/palmar cortical bone thickness plotted from the proximal end to the distal end of the phalangeal shaft in (A) IP2; (B) IP3; (C) IP4; and (D) IP5. Values greater than 1 represent more dorsal cortex relative to the palmar cortex in the shaft.

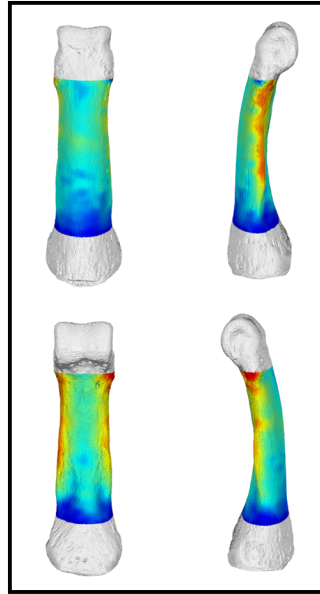
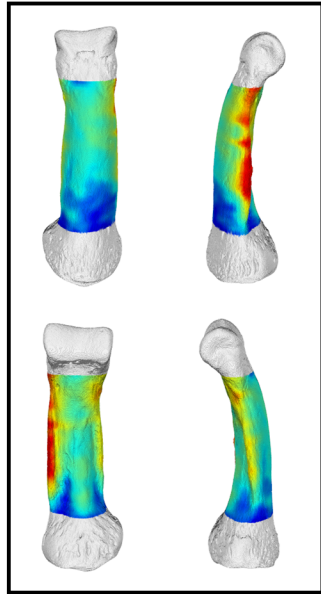
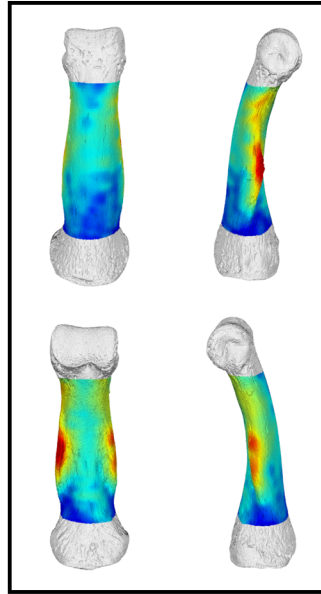
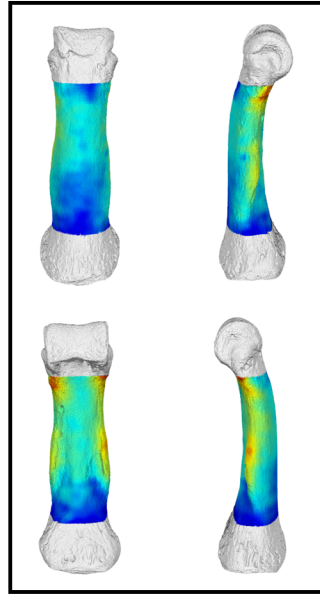
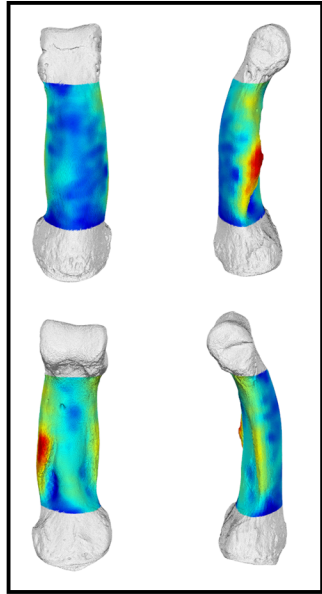
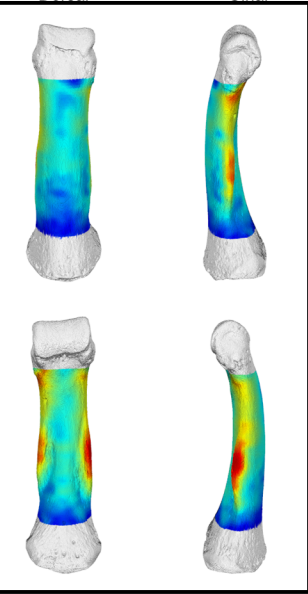
**Supplementary Figure 5:** Relationship between phalangeal curvature and cortical thickness of (A) IP2; (B) IP3; (C) IP4; and (D) IP5. Note: Only  $R^2$  values of statistically significant regressions are depicted.

**Supplementary Figure 6:** Measurements of phalangeal external morphology. The images depict, from left to right, measurements of: flexor sheath ridge length, flexor sheath ridge depth, and median bar depth. The specimen depicted is a *Gorilla* third intermediate phalanx.

*Pongo*

# IP2

Dorsal Ulnar



Palmar Radial  
ZSM\_1907\_0633b

ZSM\_1907\_0629b

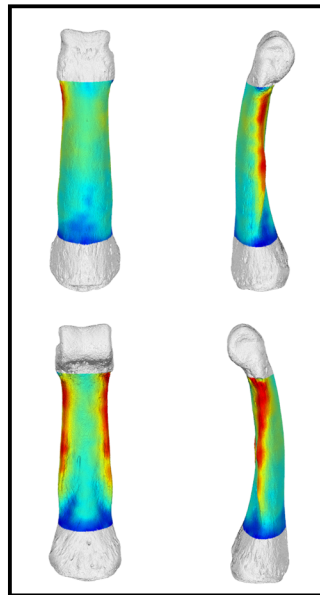
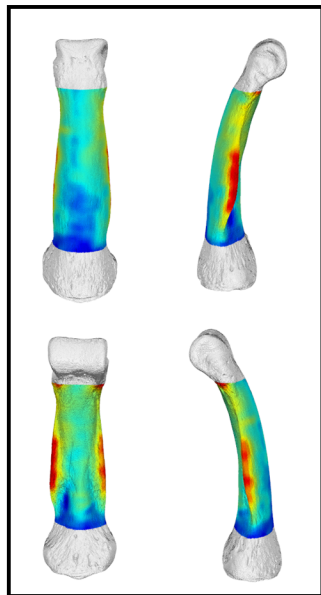
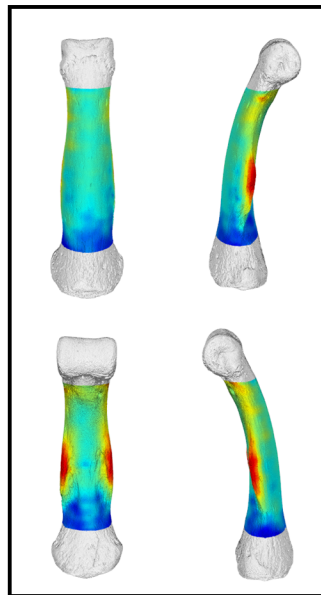
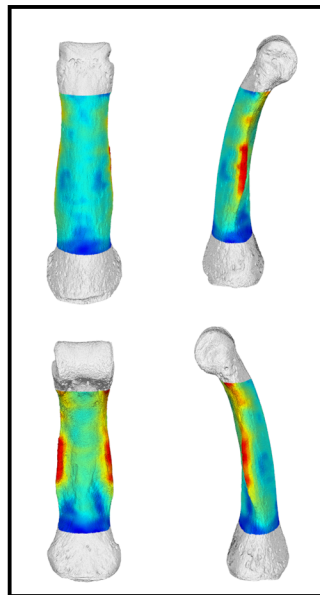
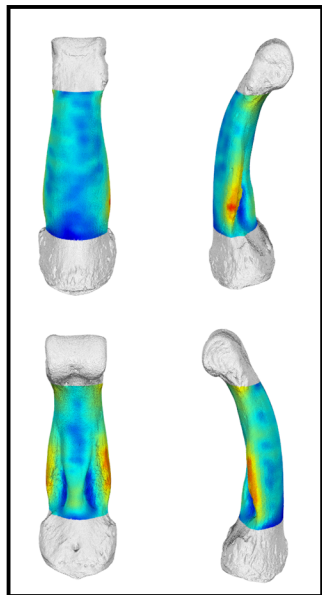
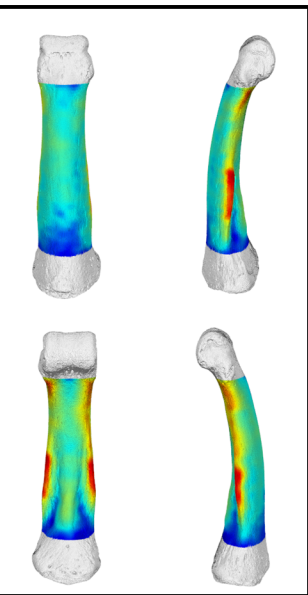
ZSM\_1907\_0660

ZSM\_AP\_120

ZSM\_1907\_0483

ZSM\_1909\_0801

# IP3



ZSM\_1907\_0633b

ZSM\_1907\_0629b

ZSM\_1907\_0660

ZSM\_AP\_120

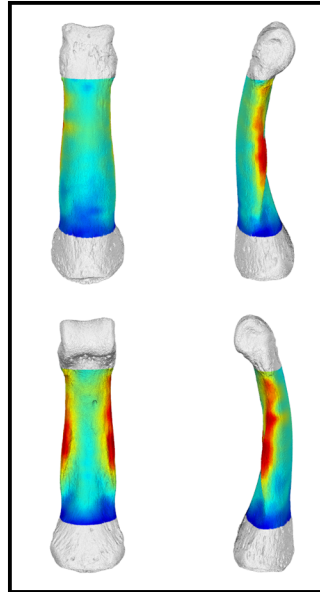
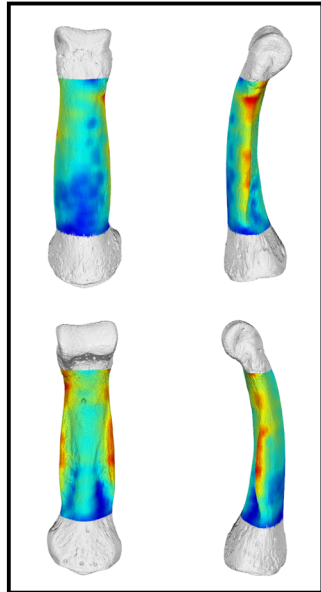
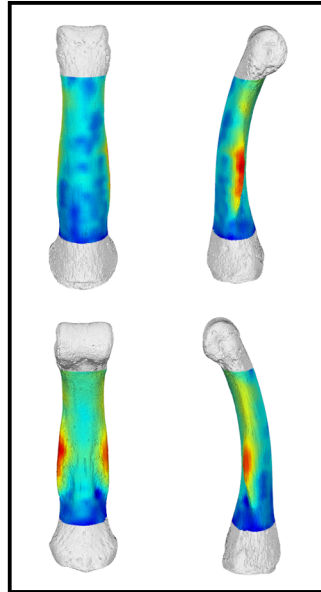
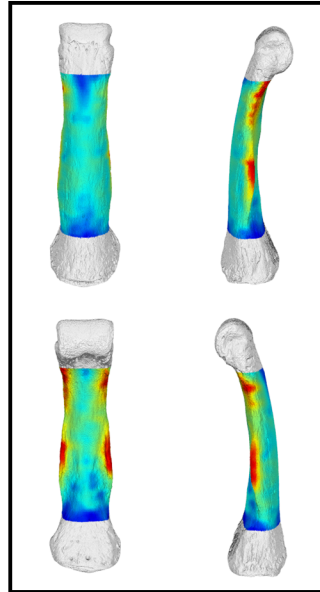
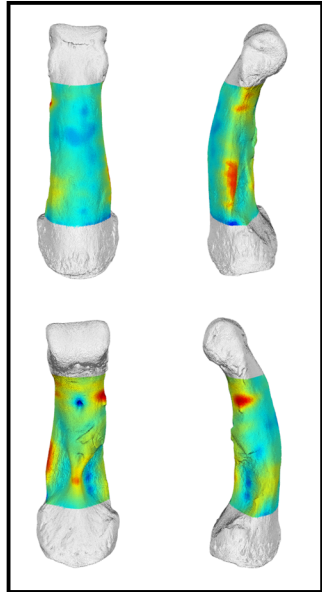
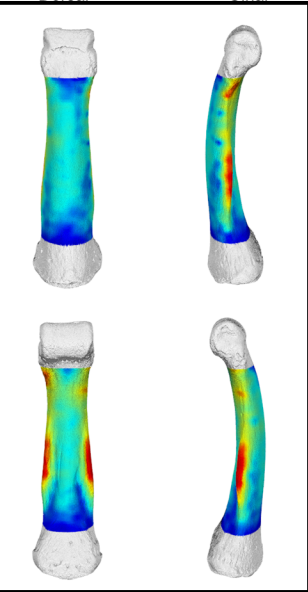
ZSM\_1907\_0483

ZSM\_1909\_0801



# IP4

Dorsal Ulnar



Palmar Radial  
ZSM\_1907\_0633b

ZSM\_1907\_0629b

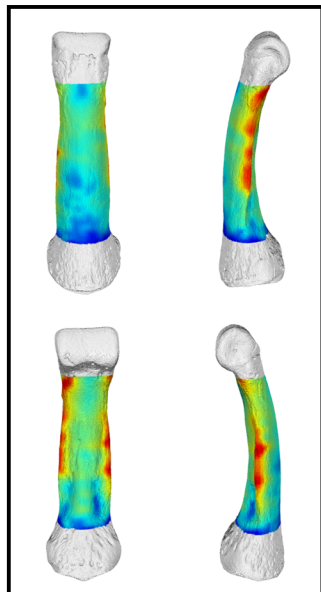
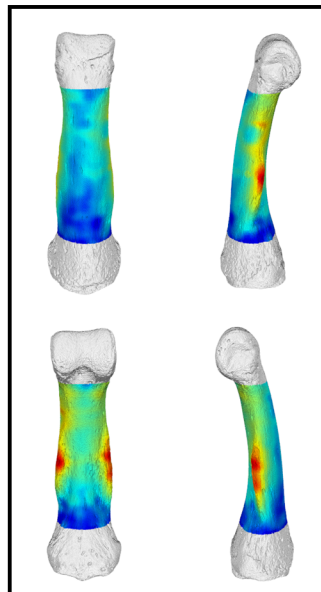
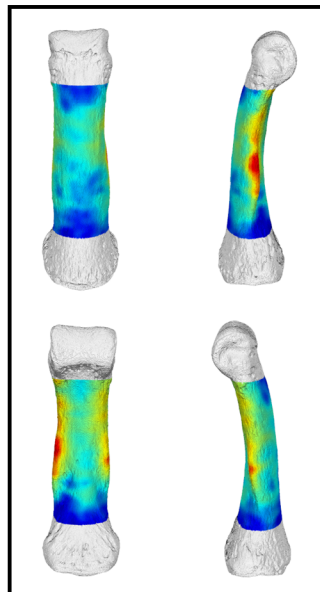
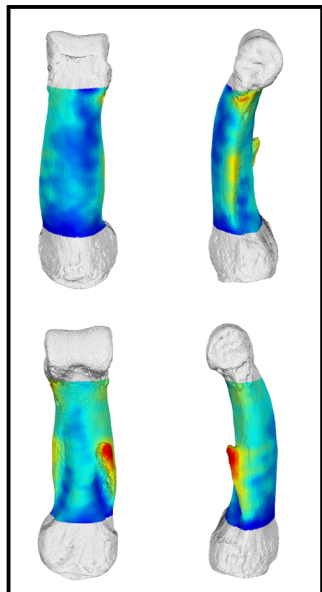
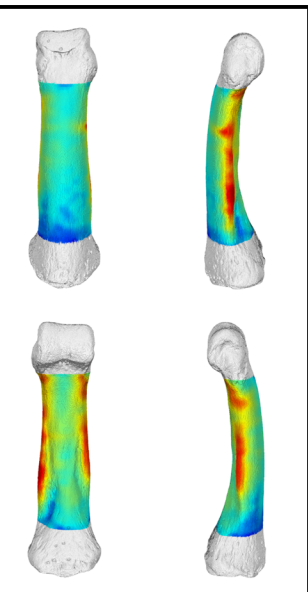
ZSM\_1907\_0660

ZSM\_AP\_120

ZSM\_1907\_0483

ZSM\_1909\_0801

# IP5



ZSM\_1907\_0633b

ZSM\_1907\_0629b

ZSM\_1907\_0660

ZSM\_AP\_120

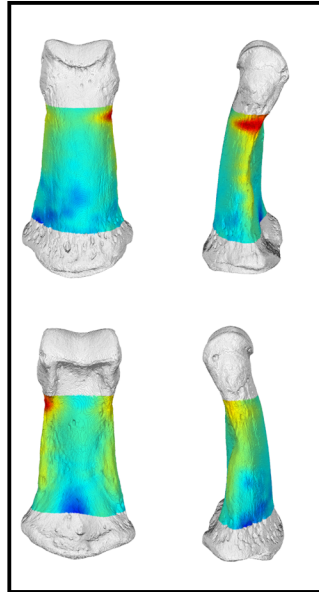
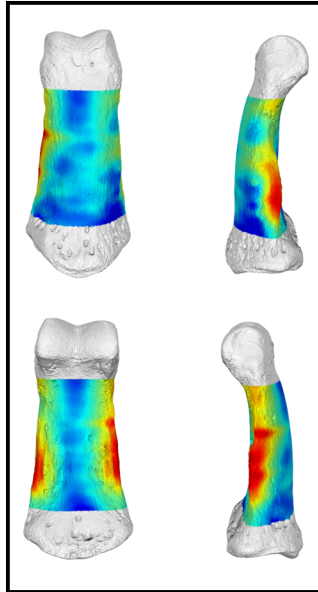
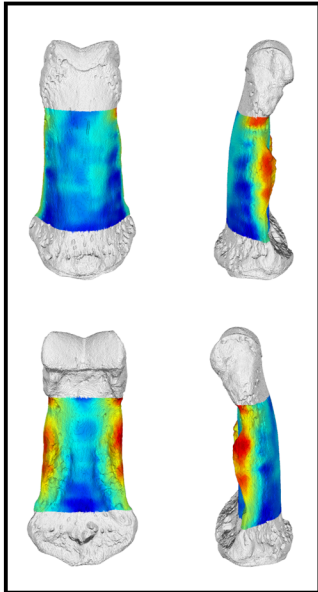
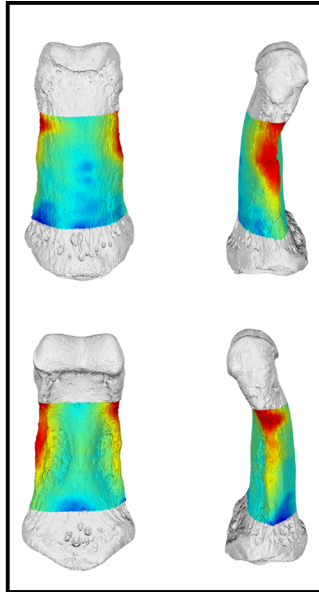
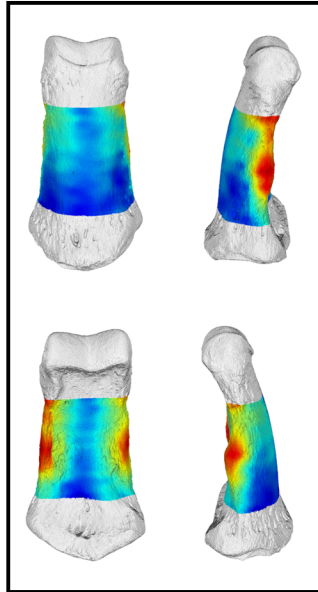
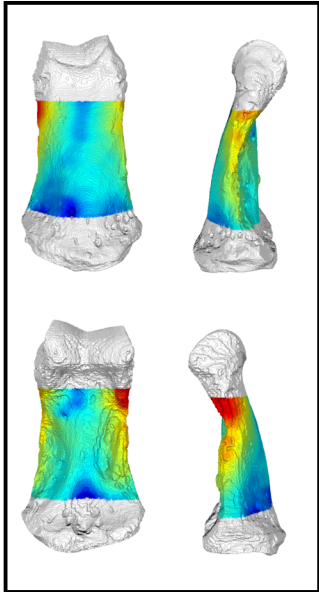
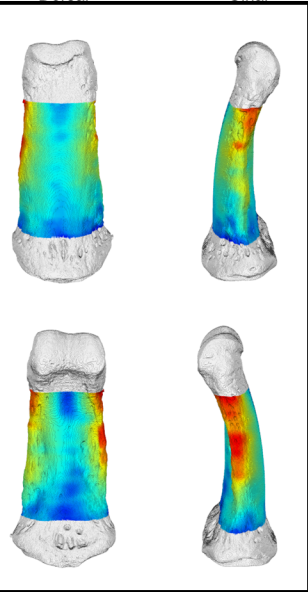
ZSM\_1907\_0483

*Gorilla*

IP2

Dorsal

Ulnar



Palmar

Radial

ZMB\_11642

ZMB\_83545

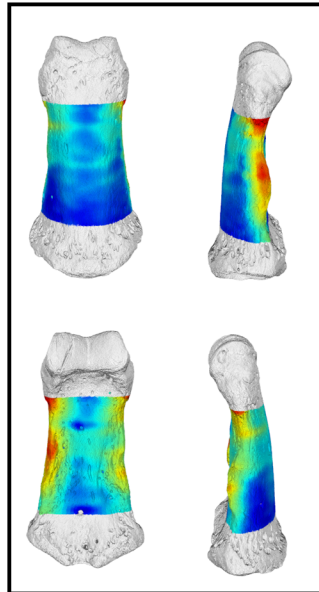
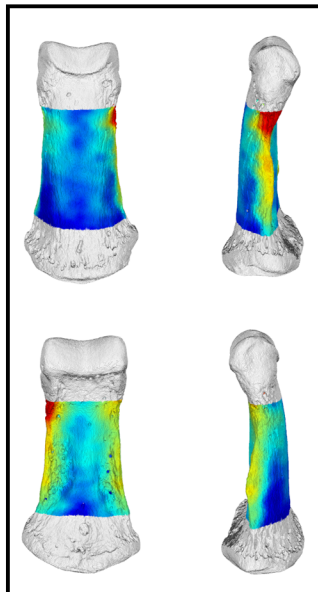
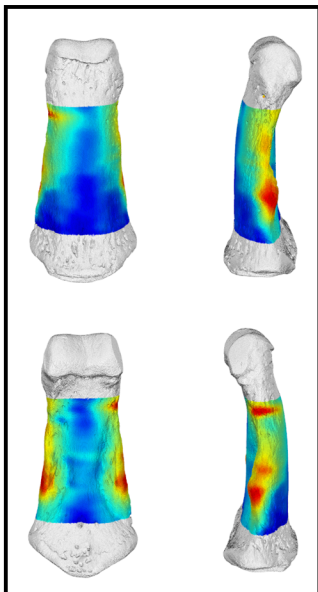
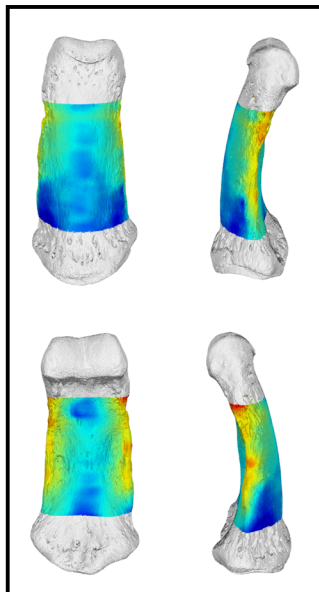
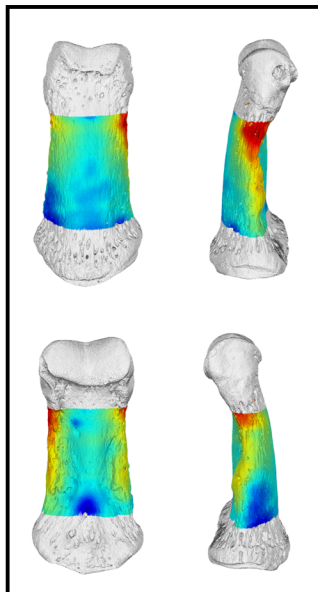
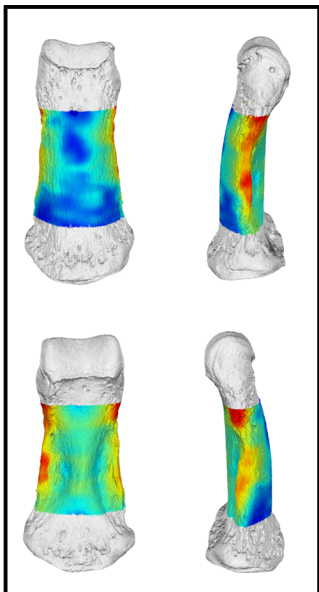
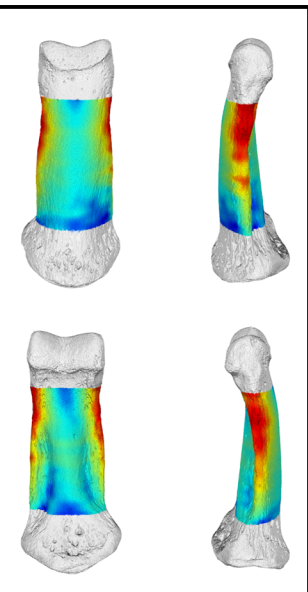
PC\_MER\_135

PC\_MER\_264

PC\_MER\_372

PC\_MER\_856

PC\_MER\_962



PC\_MER\_696

NH\_MER33\_755

NH\_MER33\_461

NH\_CAM1\_106

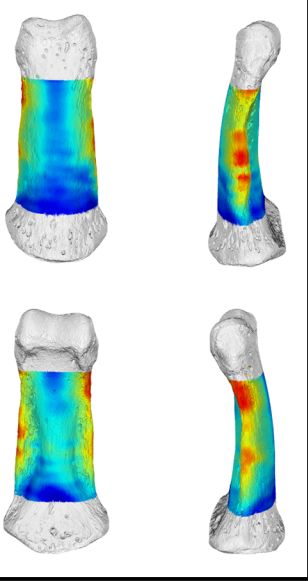
NH\_CAM1\_105

NH\_MER35\_150

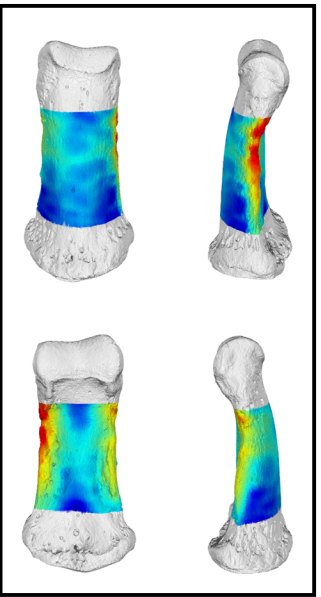
NH\_CAM1\_98

# IP2

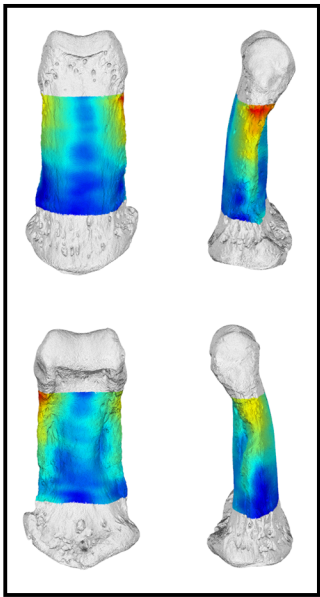
Dorsal Ulnar



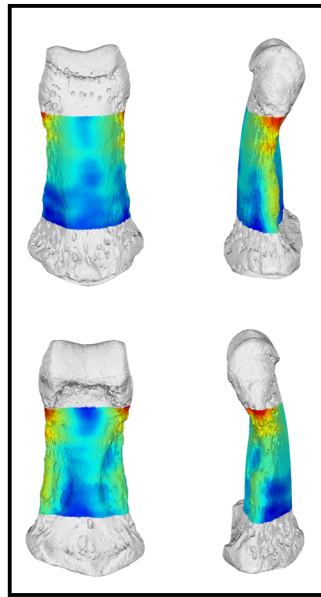
Palmar Radial  
NH\_MER35\_136



NH\_MER35\_139



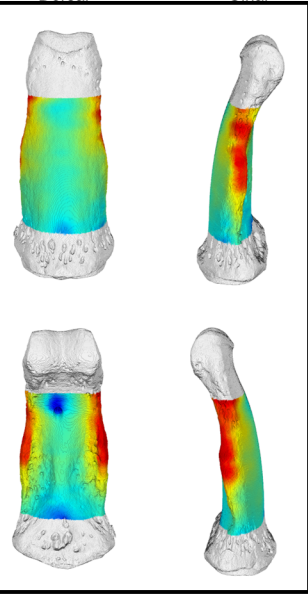
NH\_FC\_130



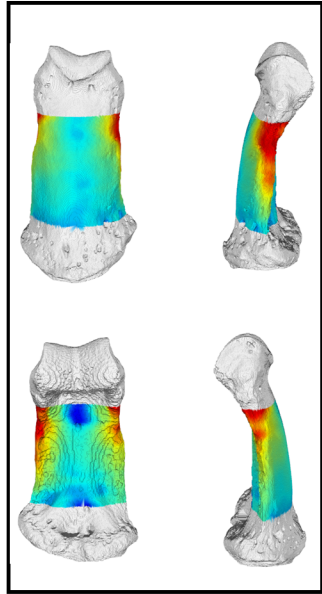
NH\_FC\_123

# IP3

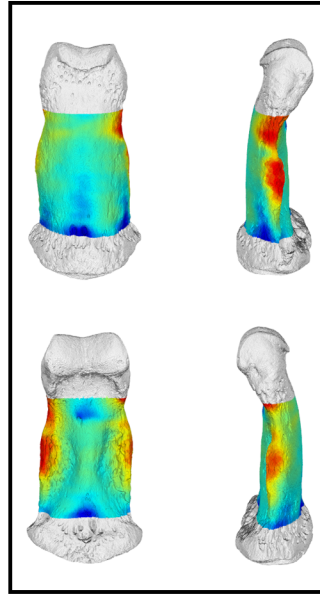
Dorsal Ulnar



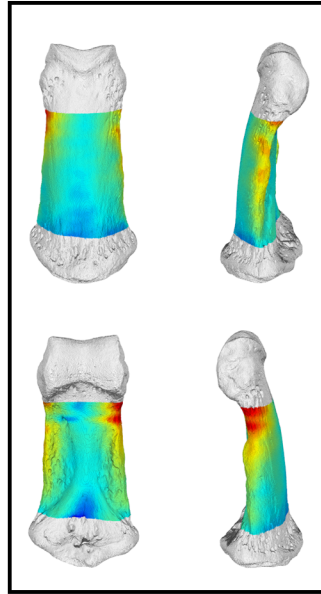
Palmar Radial  
ZMB\_11642



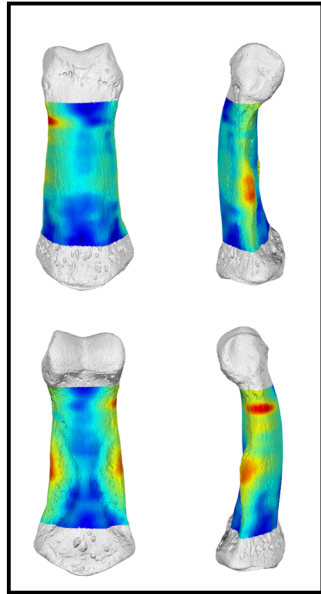
ZMB\_83545



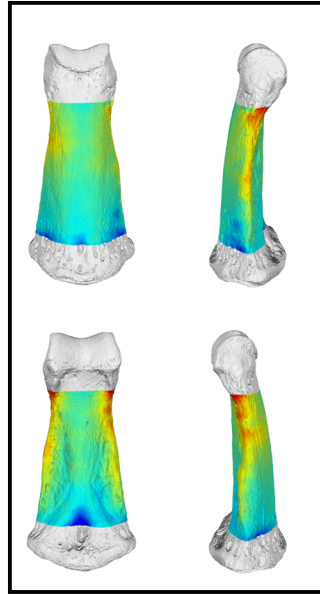
PC\_MER\_264



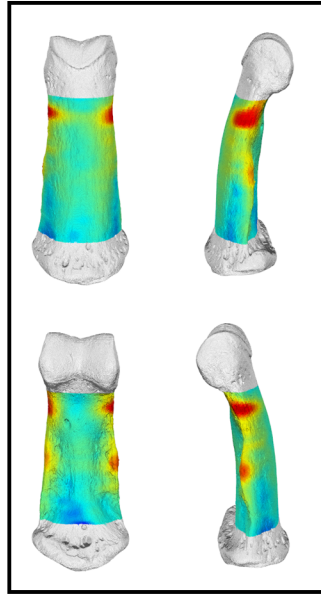
PC\_MER\_372



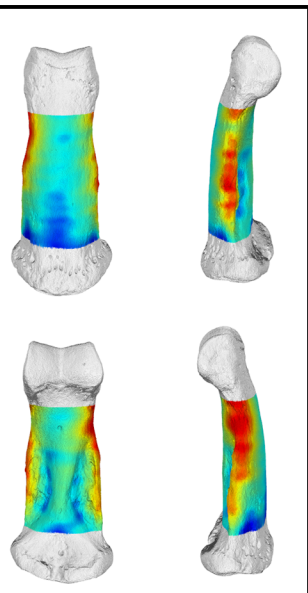
PC\_MER\_856



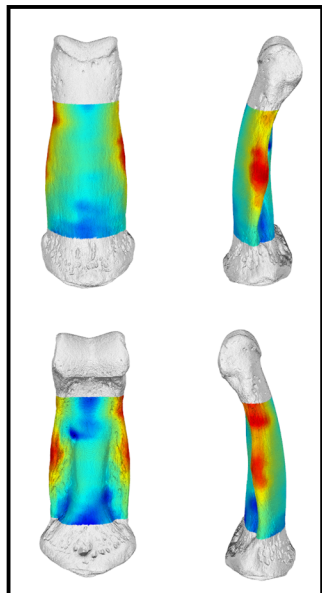
PC\_MER\_962



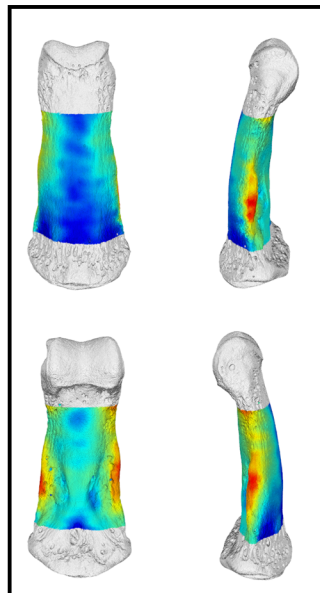
PC\_MER\_95



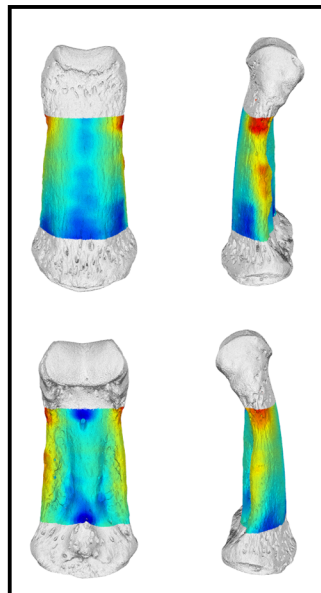
PC\_MERI\_29



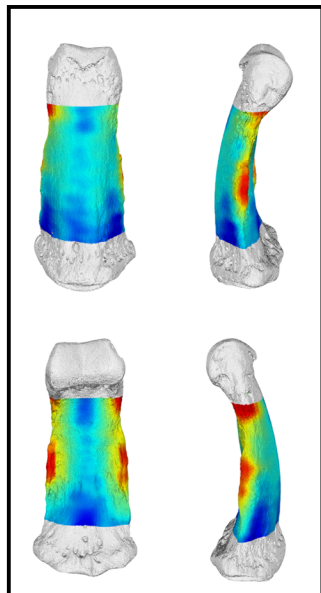
PC\_MER\_696



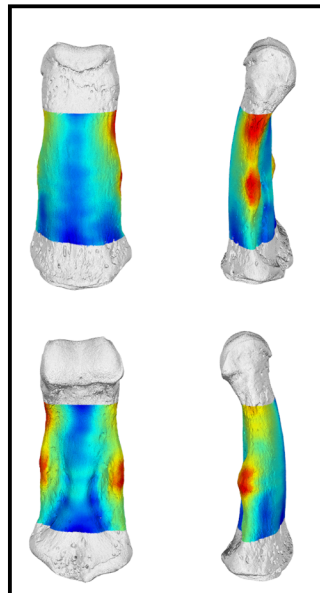
NH\_MER33\_755



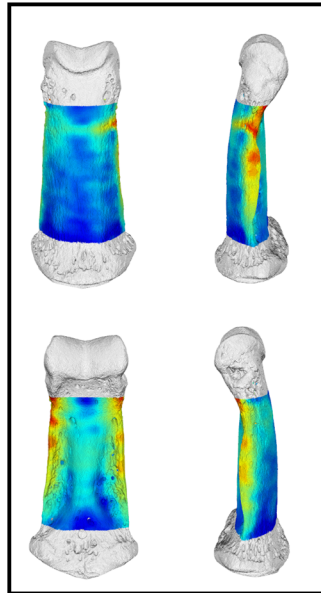
NH\_MER33\_461



NH\_CAM1\_106



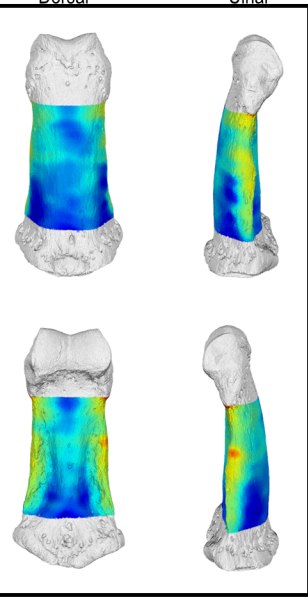
NH\_CAM1\_105



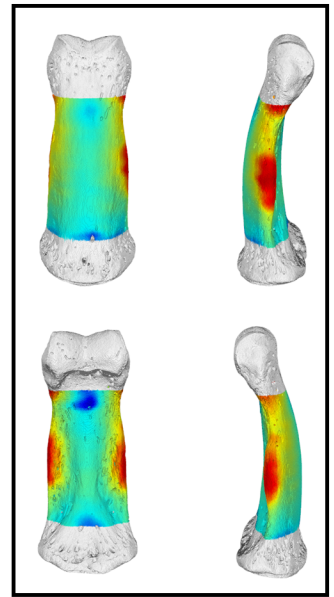
NH\_MER35\_150

# IP3

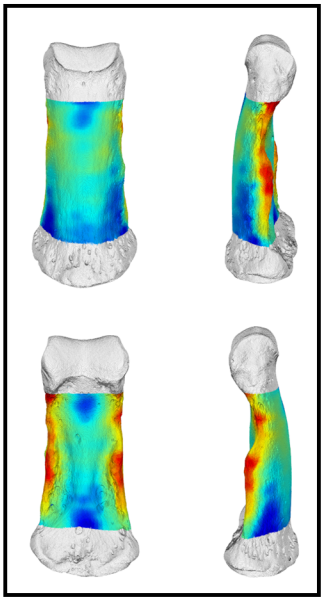
Dorsal Ulnar



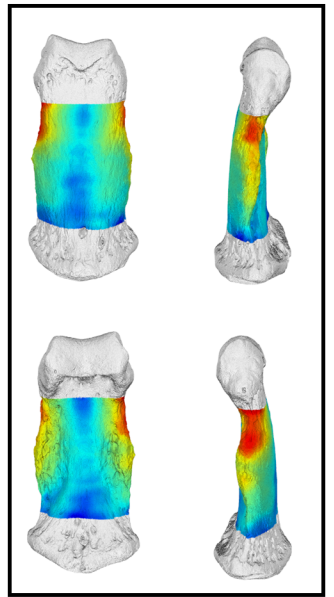
Palmar Radial  
NH\_CAM1\_98



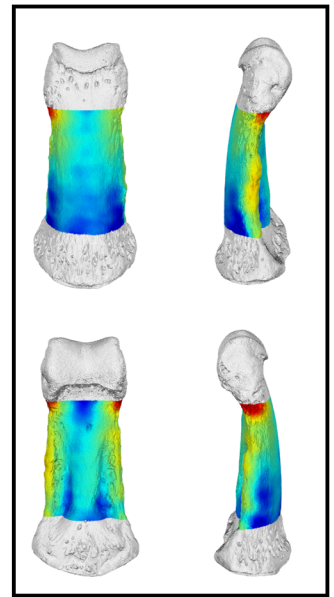
NH\_MER35\_136



NH\_MER35\_139



NH\_FC\_130

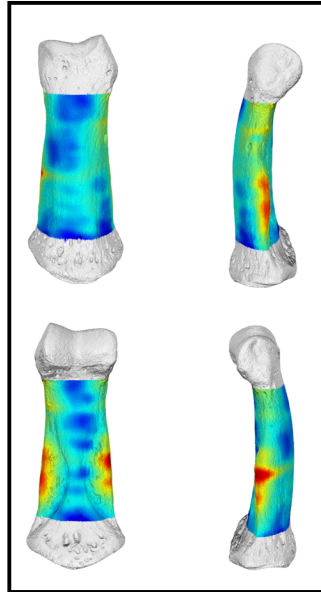
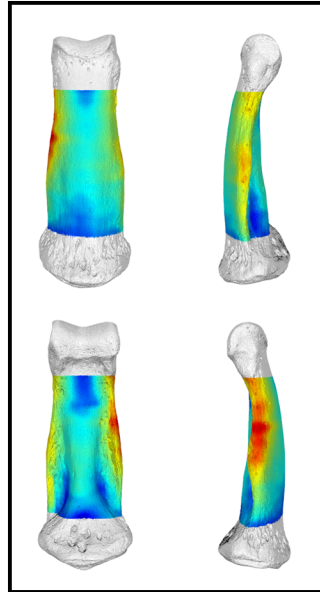
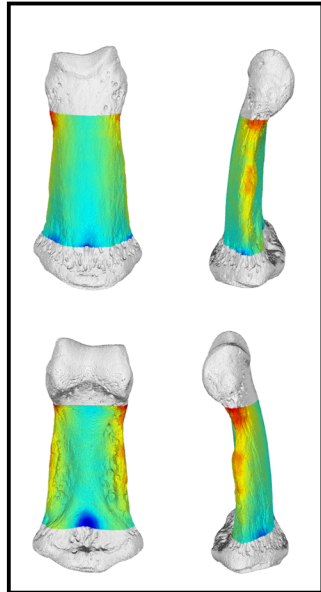
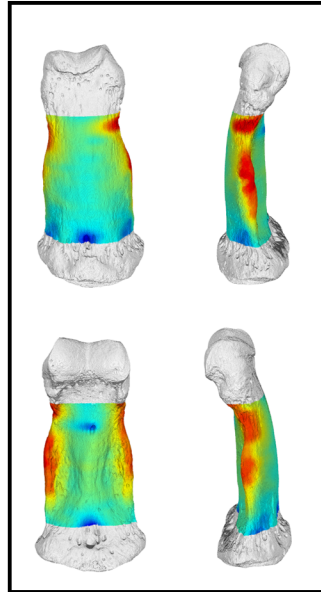
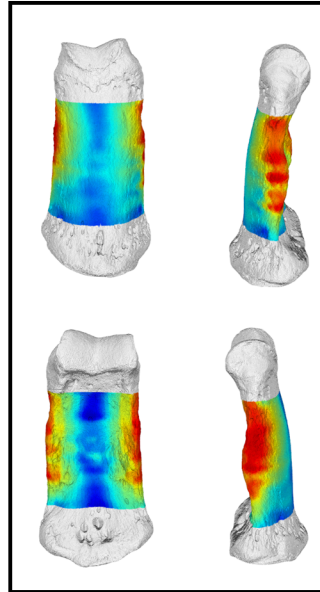
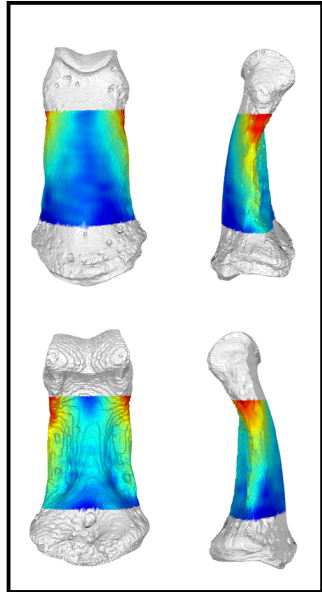
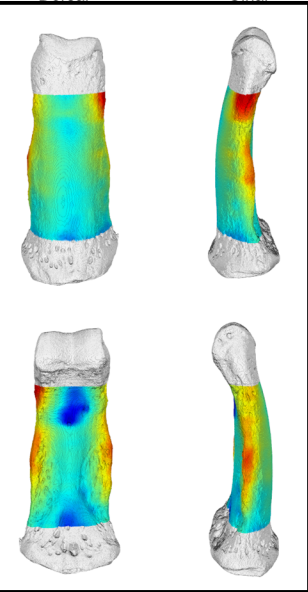


NH\_FC\_123

# IP4

Dorsal

Ulnar



Palmar

Radial

ZMB\_11642

ZMB\_83545

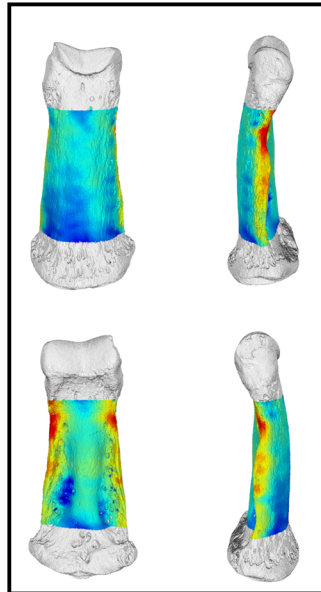
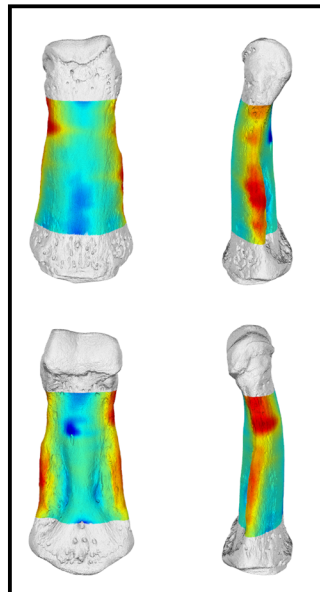
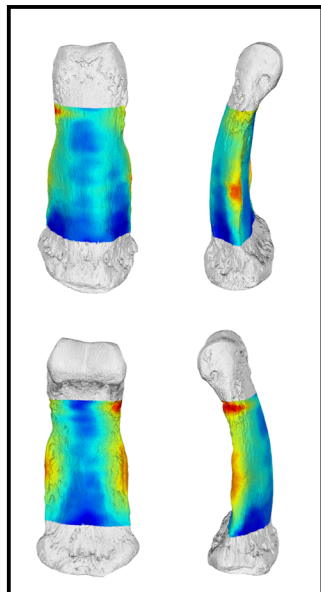
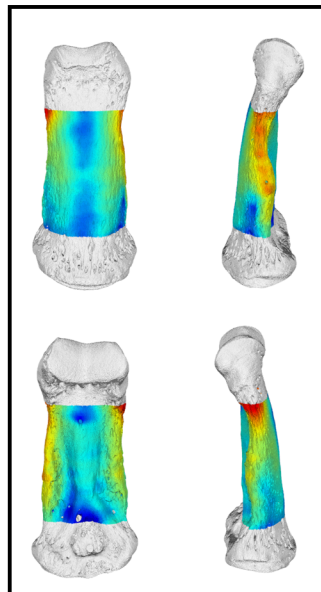
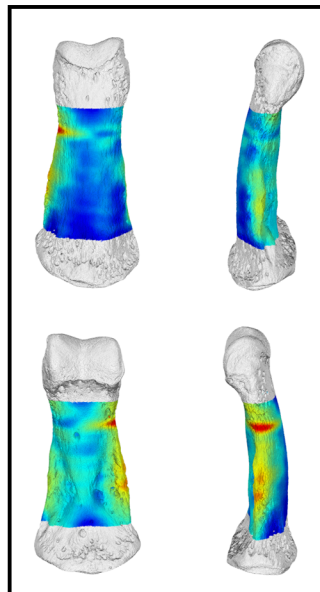
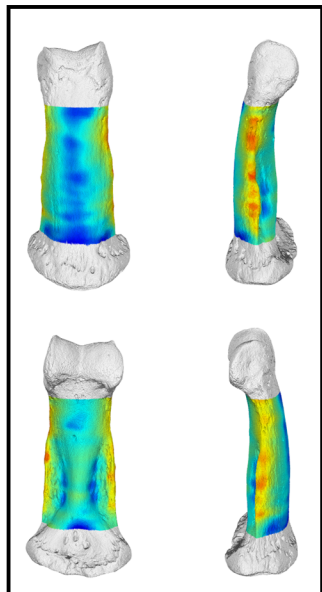
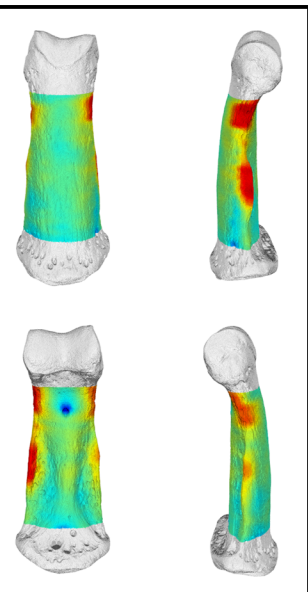
PC\_MER\_135

PC\_MER\_264

PC\_MER\_372

PC\_MER\_696

PC\_MER\_856



PC\_MER\_95

PC\_MERI\_29

NH\_MER33\_755

NH\_MER33\_461

NH\_CAM1\_106

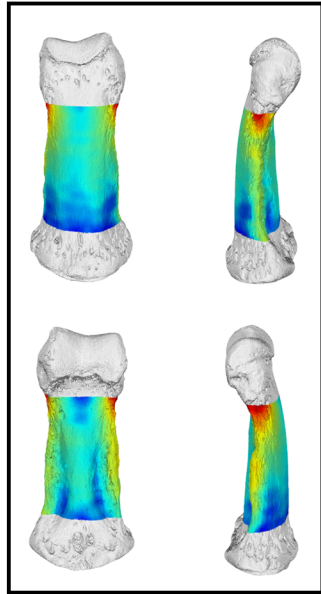
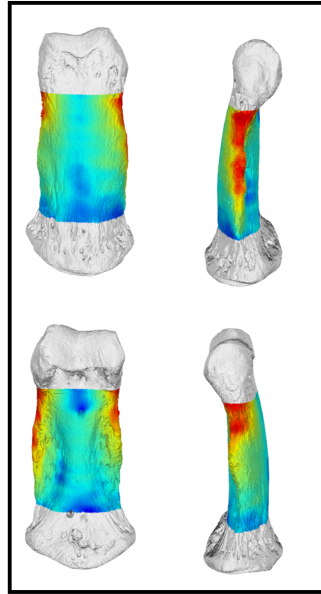
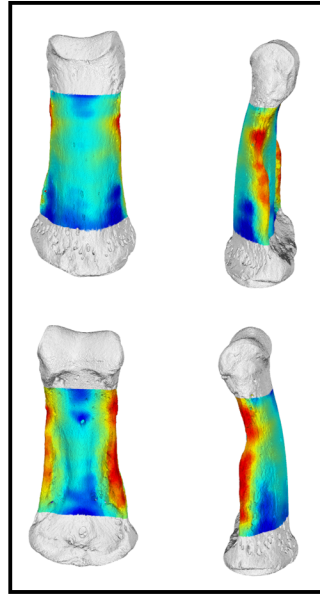
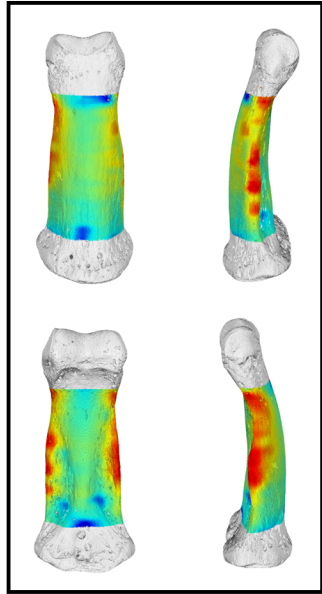
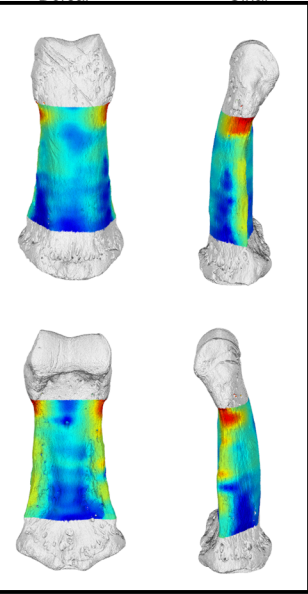
NH\_CAM1\_105

NH\_MER35\_150

# IP4

Dorsal

Ulnar



Palmar

Radial

NH\_CAM1\_98

NH\_MER35\_136

NH\_MER35\_139

NH\_FC\_130

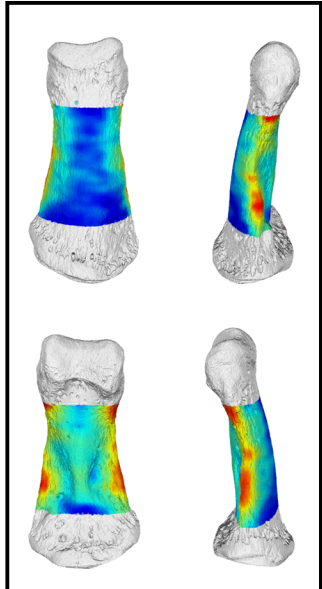
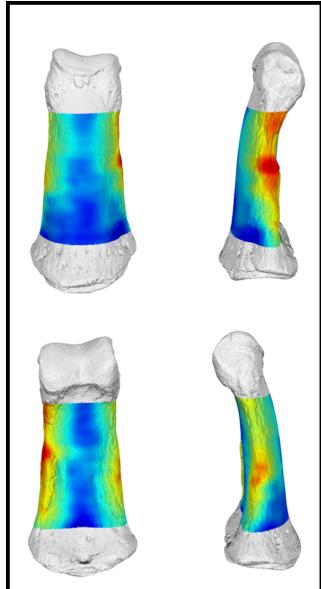
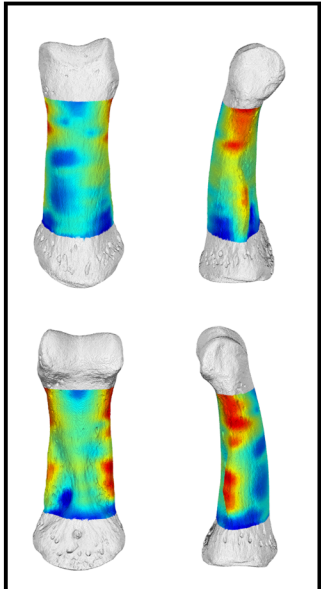
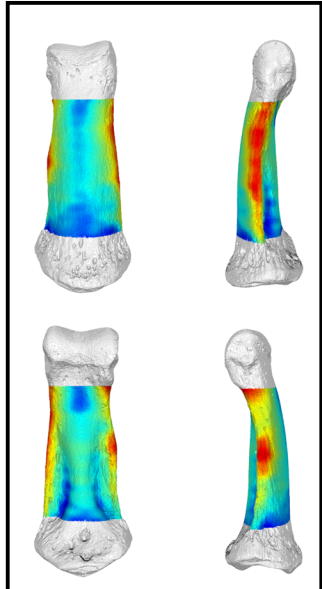
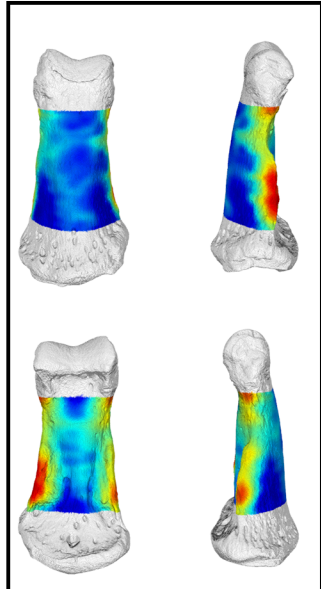
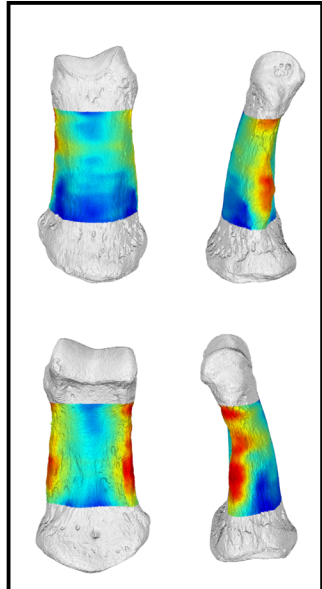
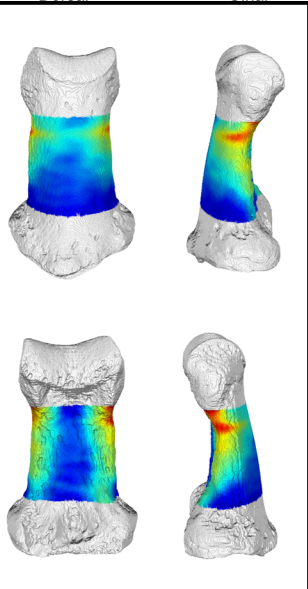
NH\_FC\_123



# IP5

Dorsal

Ulnar



Palmar

Radial

ZMB\_83545

PC\_MER\_135

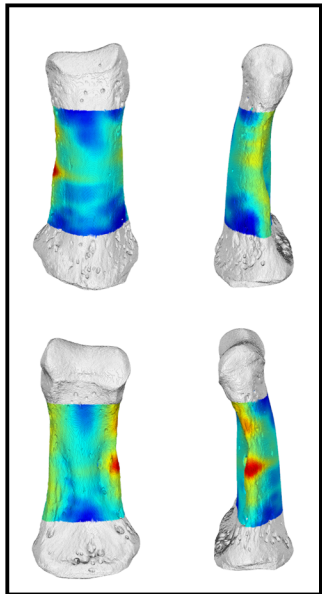
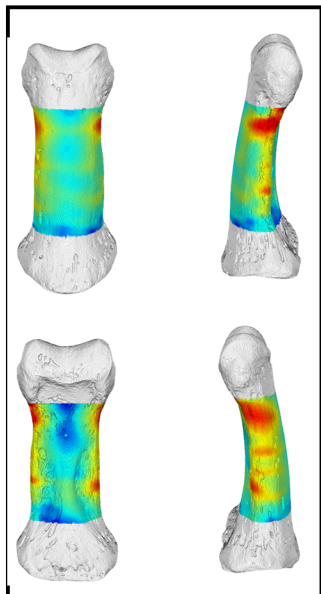
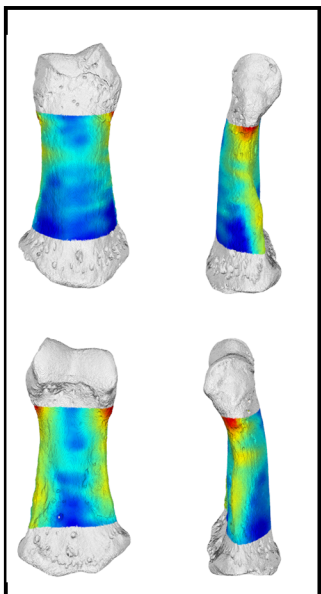
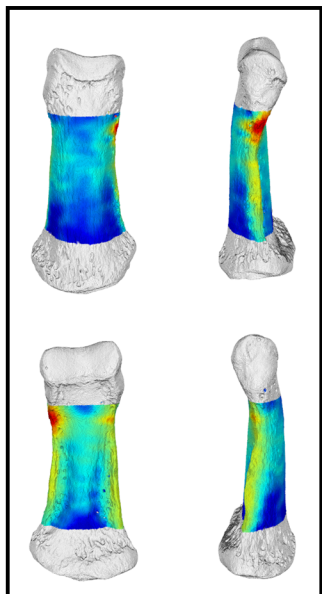
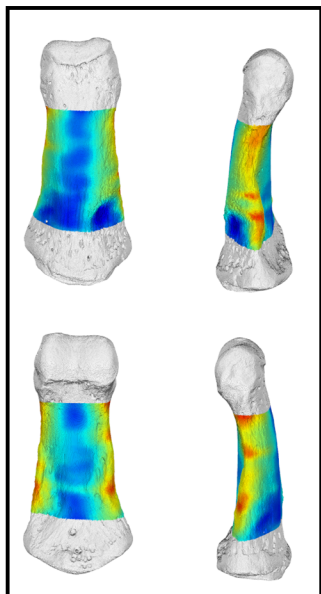
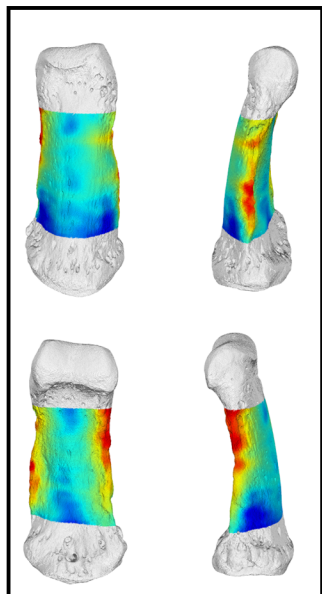
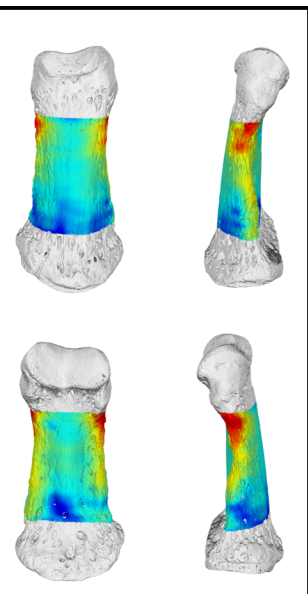
PC\_MER\_300

PC\_MER\_696

PC\_MER\_856

PC\_ZVI\_32

NH\_MER33\_755



NH\_MER33\_461

NH\_CAM1\_106

NH\_CAM1\_105

NH\_MER35\_150

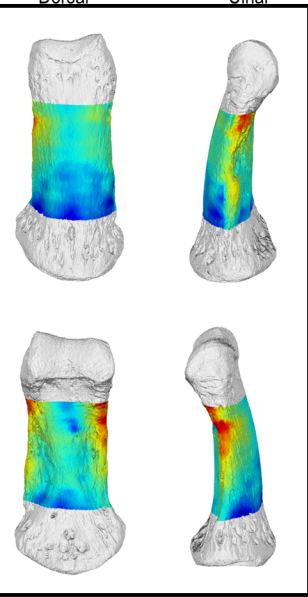
NH\_CAM1\_98

NH\_MER35\_136

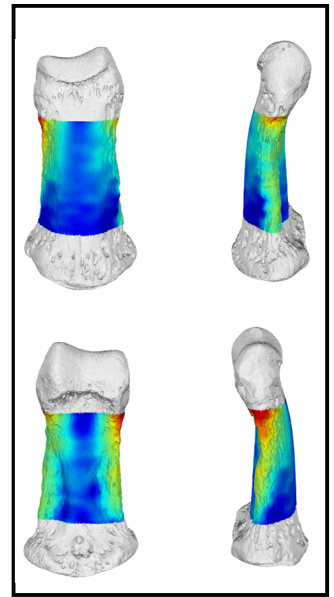
NH\_MER35\_139

# IP5

Dorsal Ulnar



Palmar Radial  
NH\_FC\_130

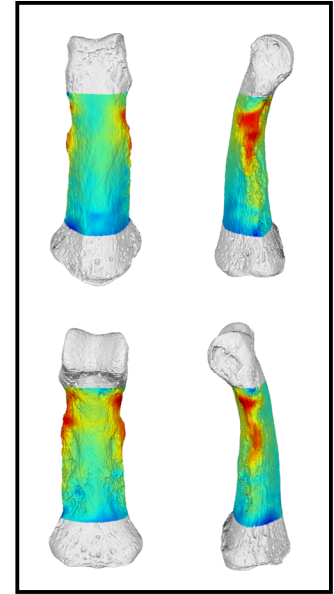
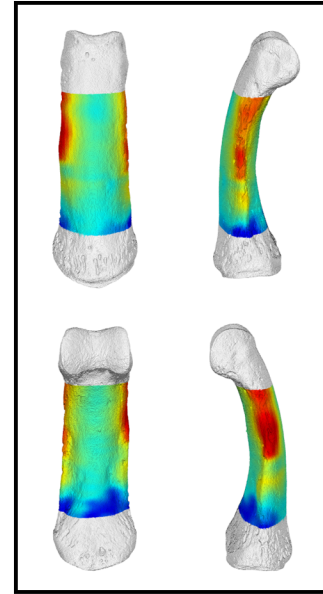
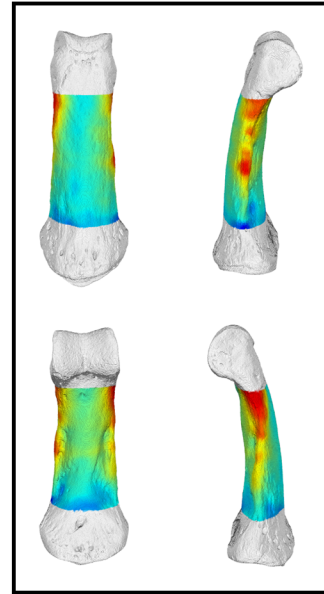
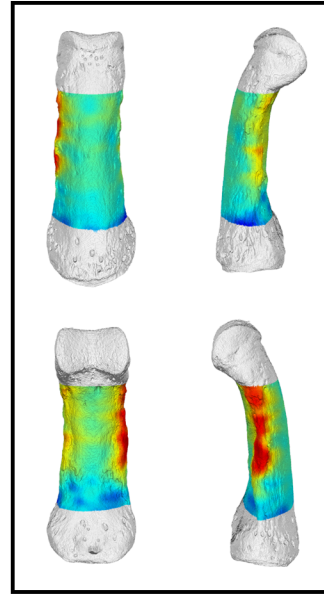
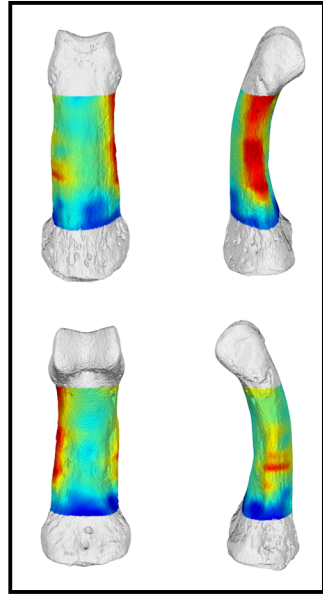
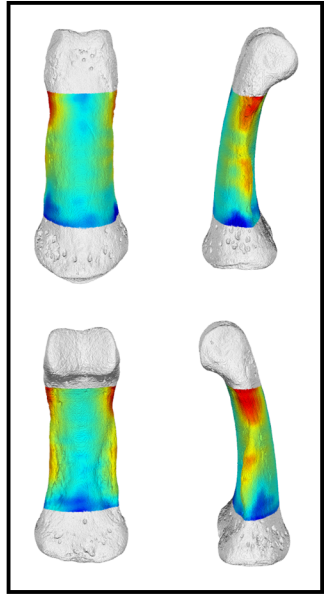
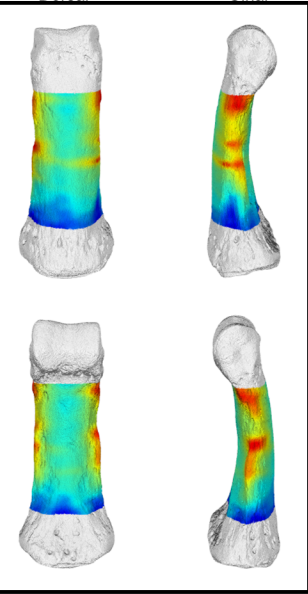


NH\_FC\_123

*Pan*

IP2

Dorsal Ulnar



Palmar Radial  
MPITC\_11789

MRAC\_29042

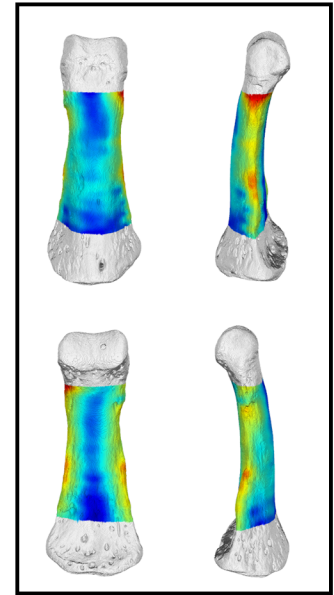
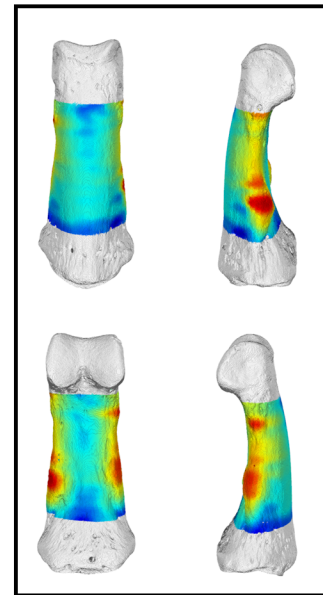
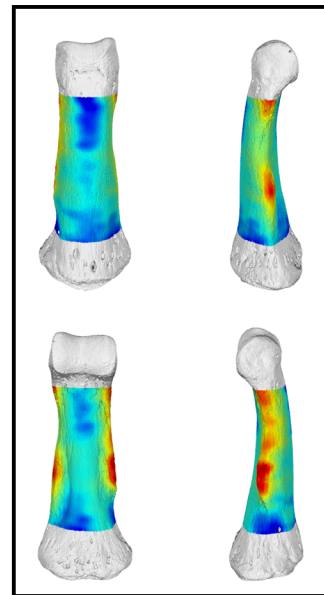
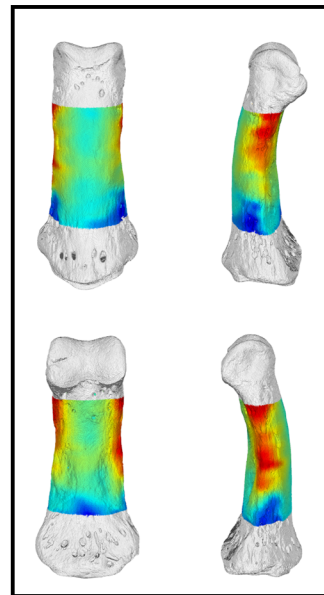
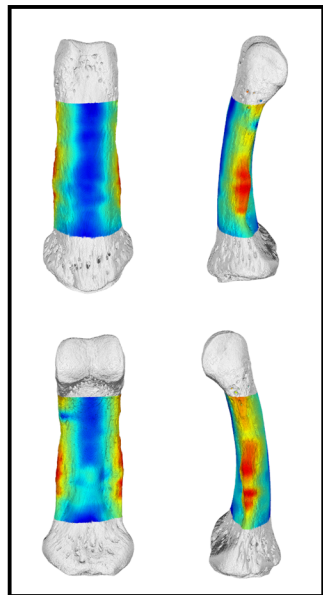
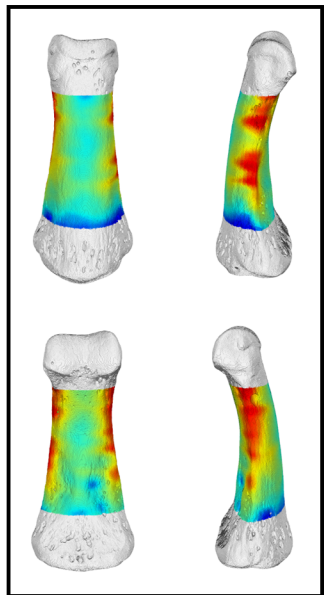
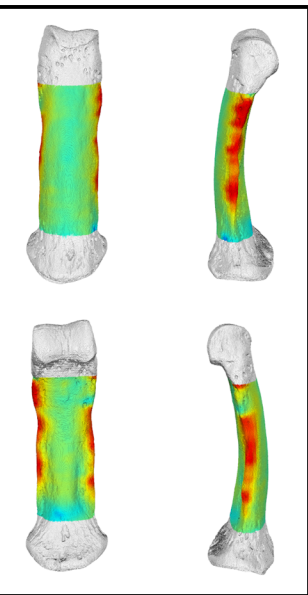
MRAC\_27698

MRAC\_29045

MRAC\_29052

MRAC\_29060

MRAC\_27696



ZSM\_AP-122

NH\_CAM1\_204

NH\_MER33\_712

NH\_MER33\_724

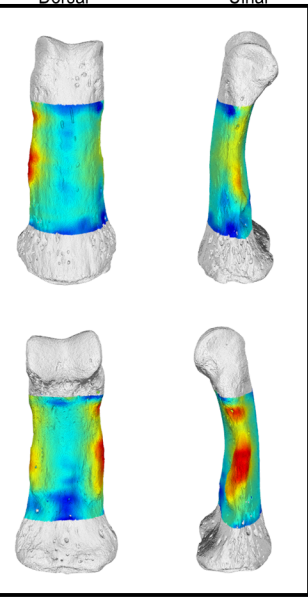
NH\_MER32\_401

NH\_MER33\_440

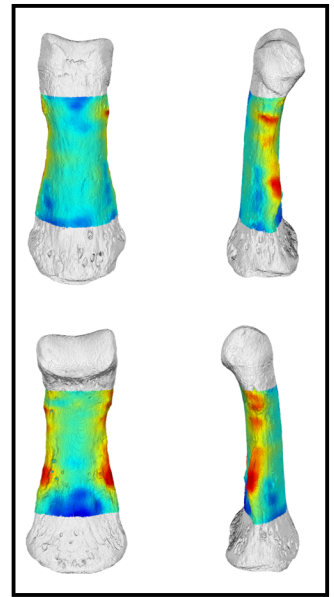
NH\_CAM2\_301

IP2

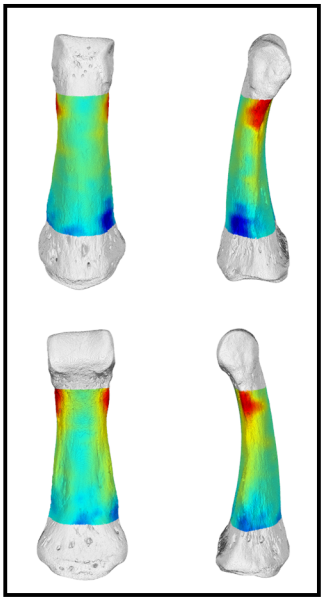
Dorsal Ulnar



Palmar Radial  
NH\_MER\_279



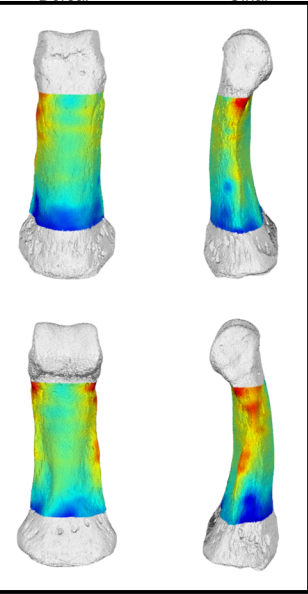
NH\_MER35\_86



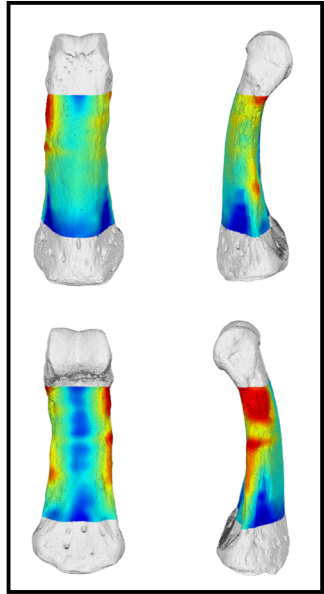
NH\_MER35\_105

# IP3

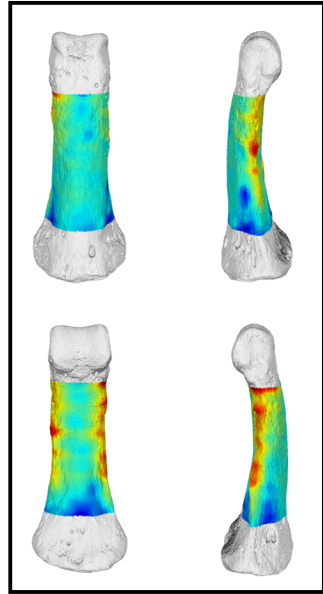
Dorsal Ulnar



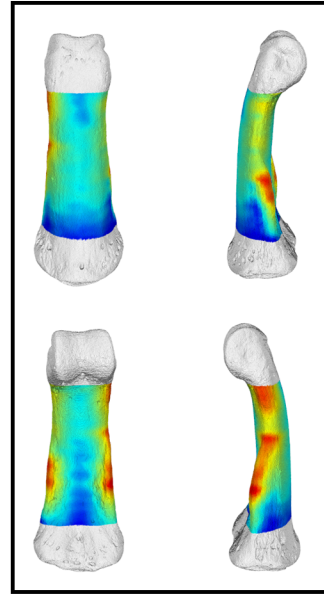
Palmar Radial  
MPITC\_11789



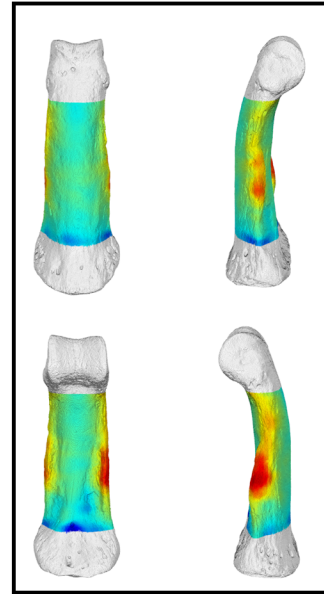
MPITC\_11781



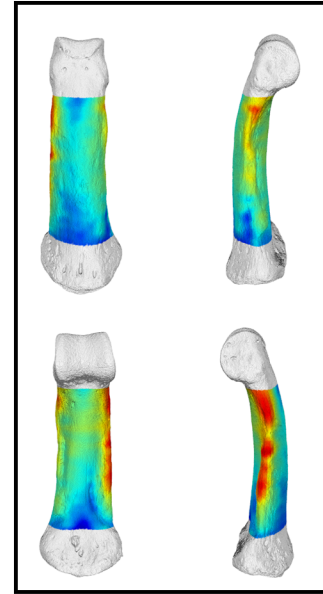
MPITC\_14996



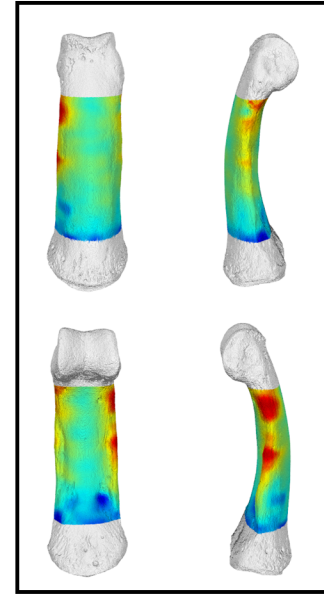
MRAC\_29042



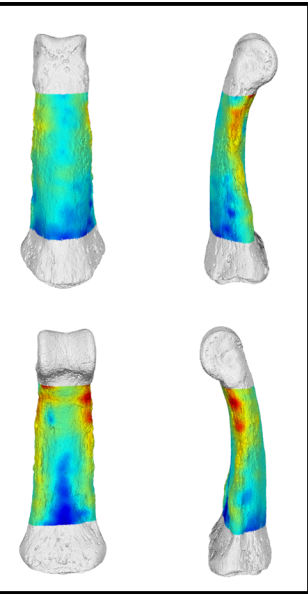
MRAC\_27698



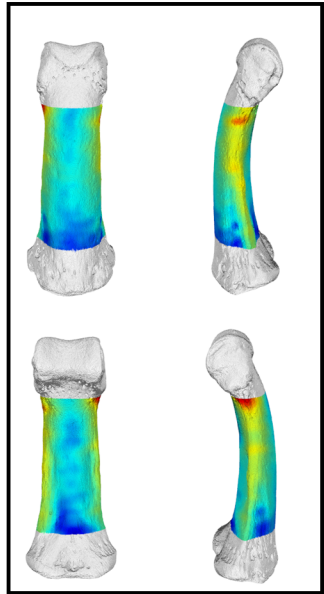
MRAC\_29052



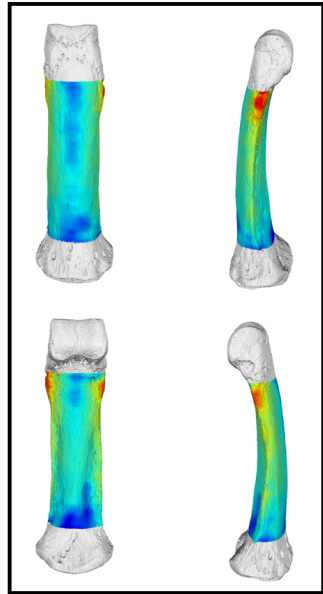
MRAC\_29060



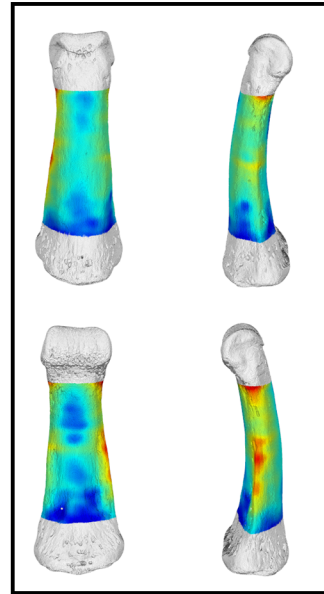
MRAC\_27696



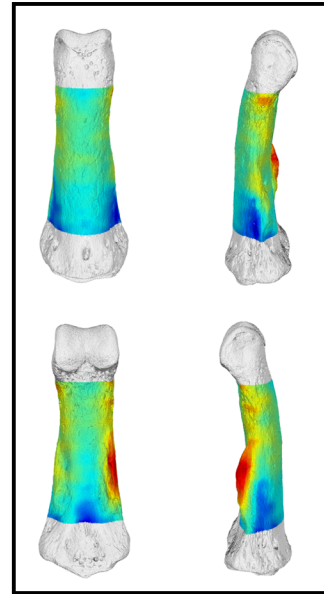
NH\_MER36\_254



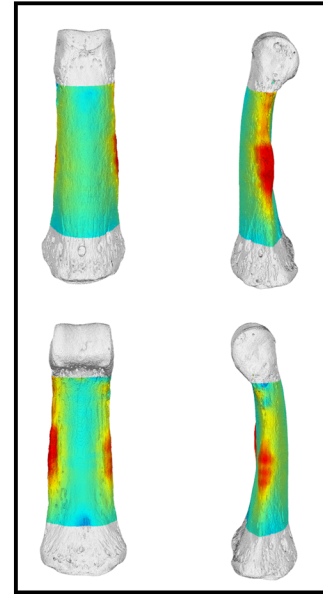
ZSM\_AP-122



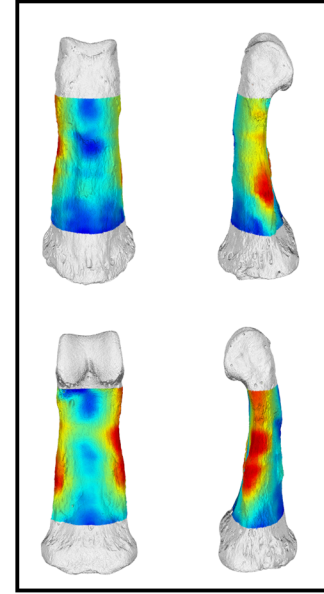
NH\_CAM1\_204



NH\_MER33\_724



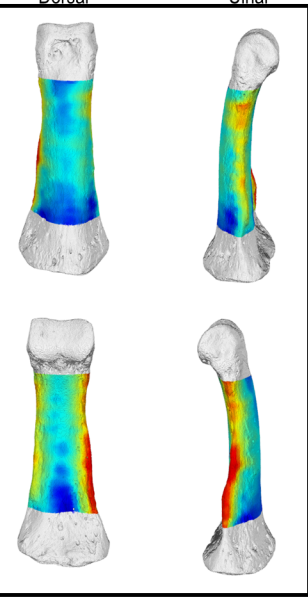
NH\_MER32\_401



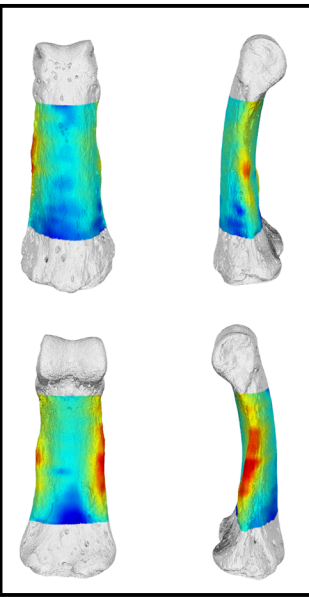
NH\_MER33\_440

# IP3

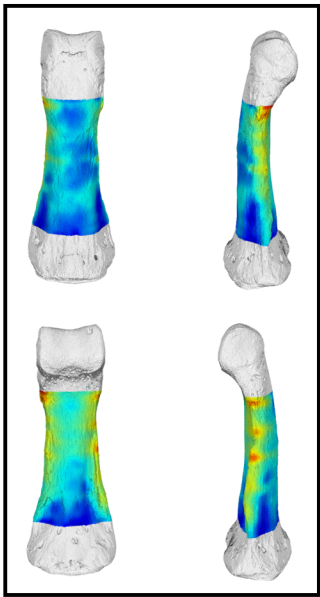
Dorsal Ulnar



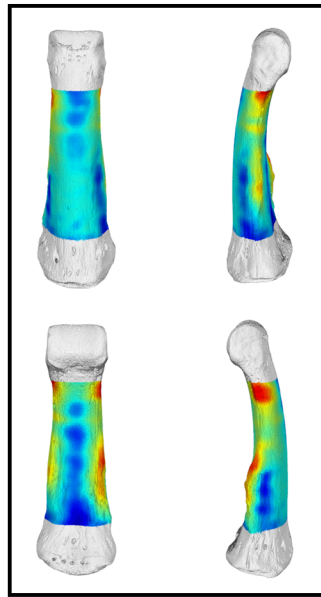
Palmar Radial  
NH\_CAM2\_301



NH\_MER\_279



NH\_MER35\_86



NH\_MER35\_105

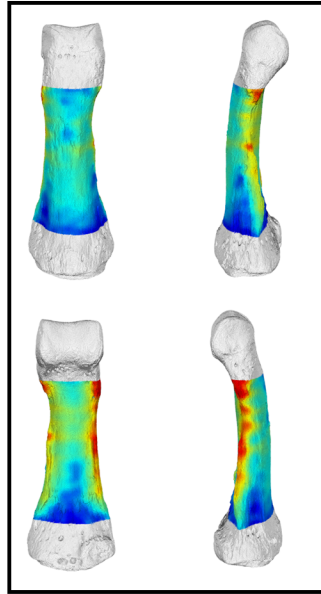
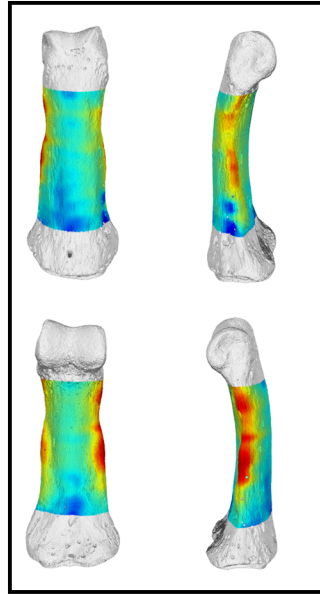
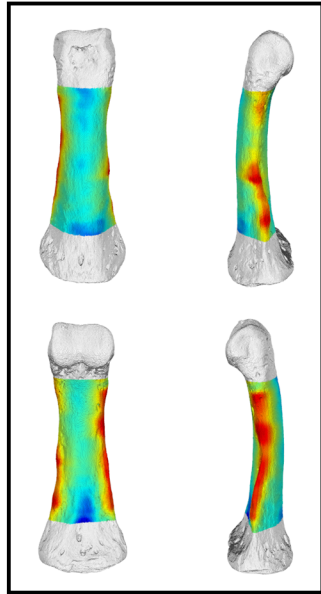
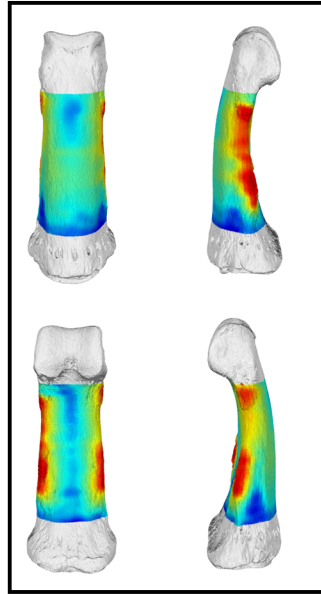
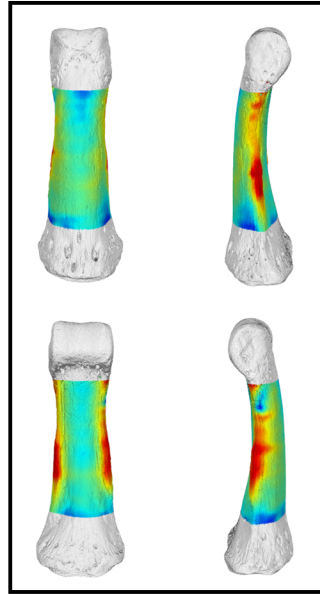
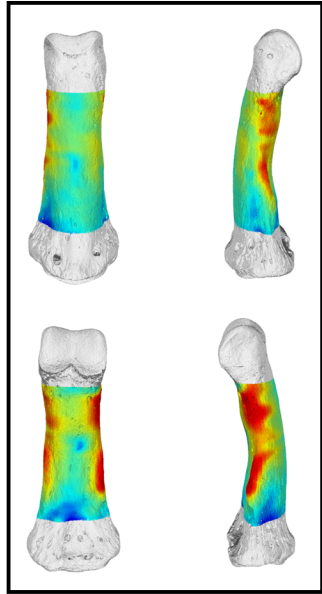
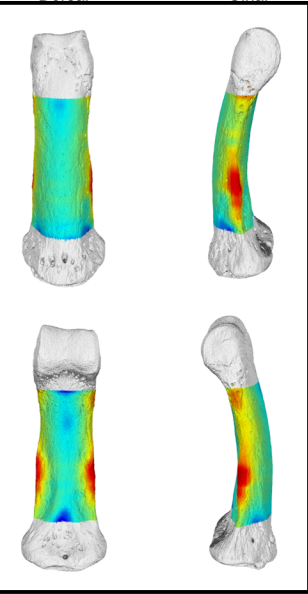




# IP4

Dorsal

Ulnar



Palmar  
NH\_MER33\_712

Radial

NH\_MER33\_724

NH\_MER32\_401

NH\_MER33\_440

NH\_CAM2\_301

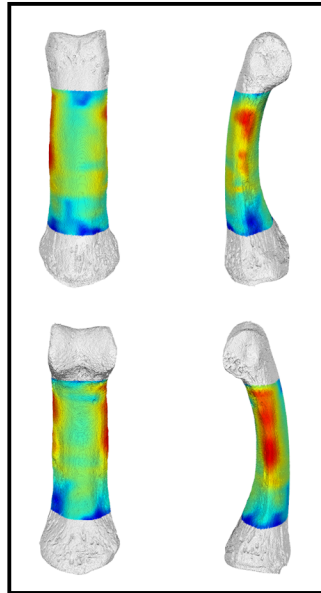
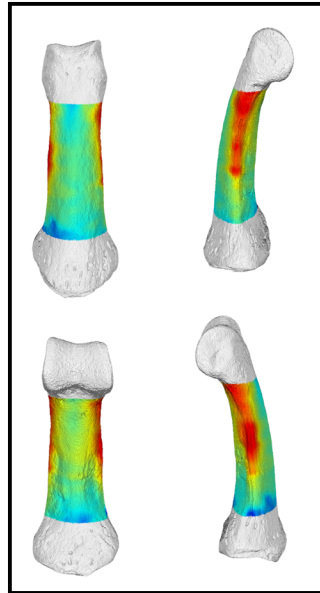
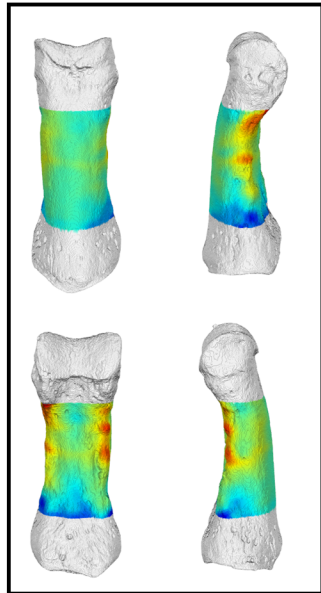
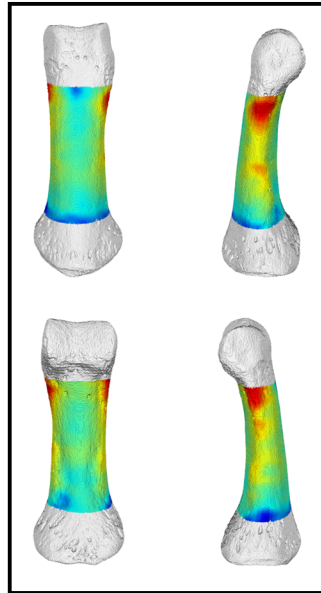
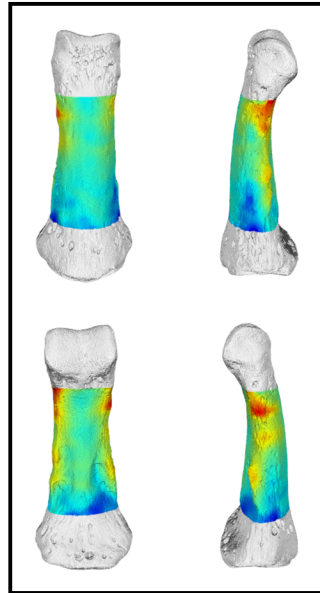
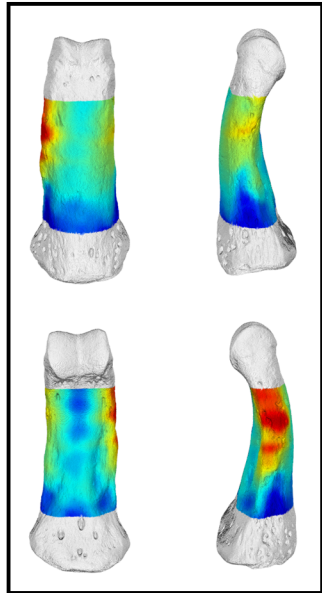
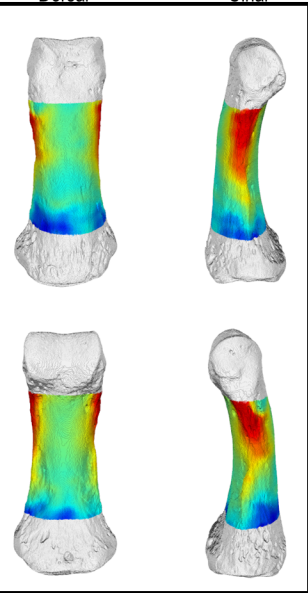
NH\_MER\_279

NH\_MER35\_86

# IP5

Dorsal

Ulnar



Palmar  
MPITC\_11789

Radial  
MPITC\_11781

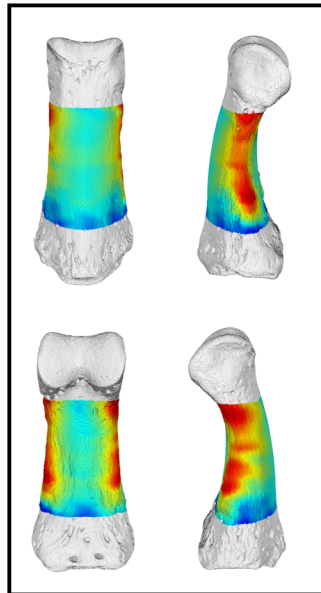
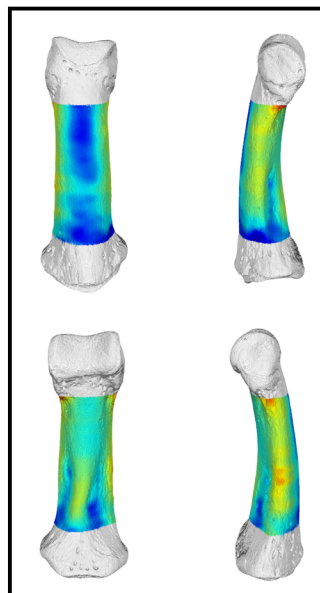
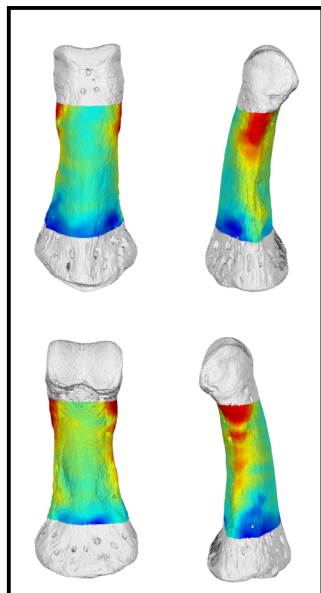
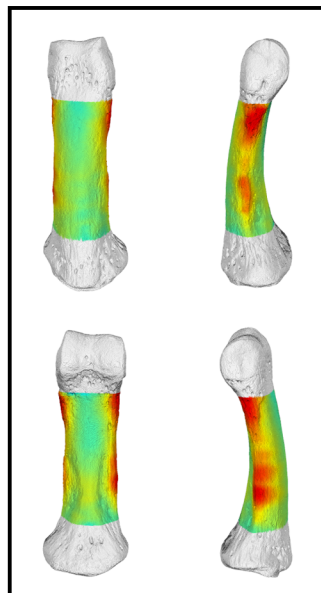
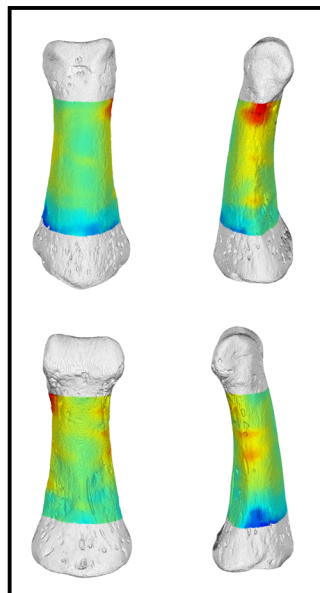
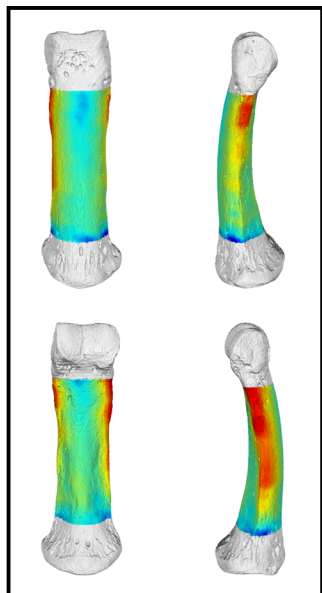
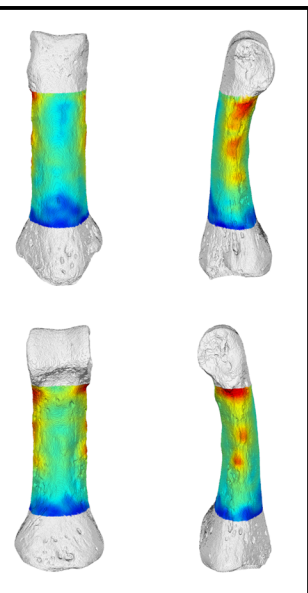
MPITC\_14996

MRAC\_29042

MRAC\_29045

MRAC\_29052

MRAC\_29060



MRAC\_27696

ZSM\_AP-122

NH\_CAM1\_204

NH\_MER33\_712

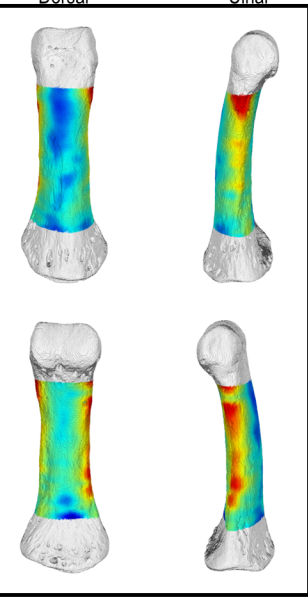
NH\_MER33\_724

NH\_MER36\_254

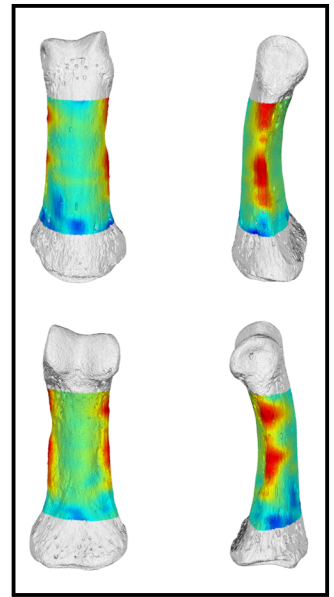
NH\_MER33\_440

# IP5

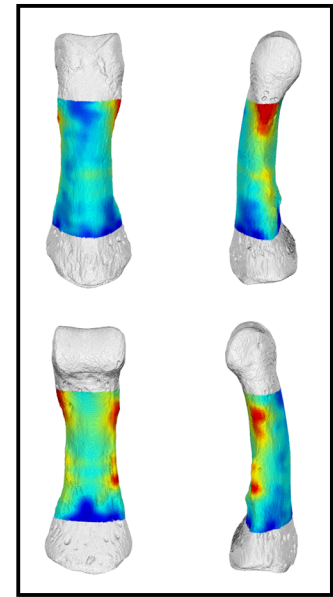
Dorsal Ulnar



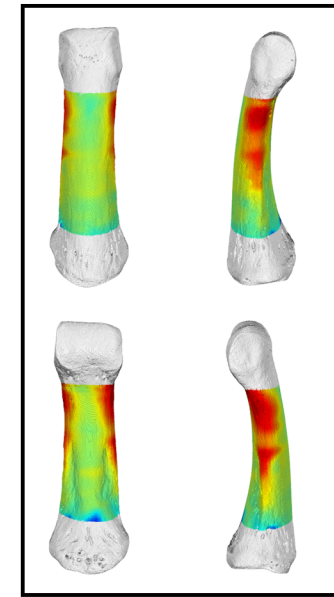
Palmar Radial  
NH\_CAM2\_301



NH\_MER\_279



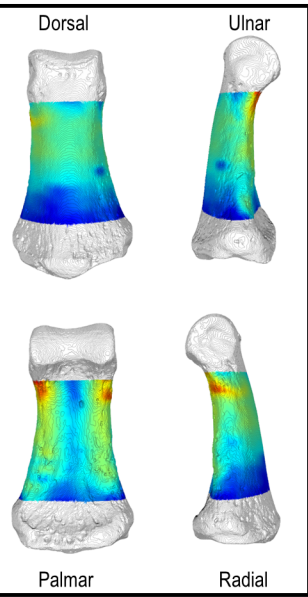
NH\_MER35\_86



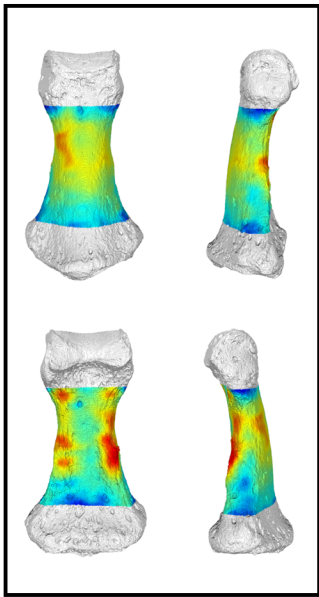
NH\_MER35\_105

*H. sapiens*

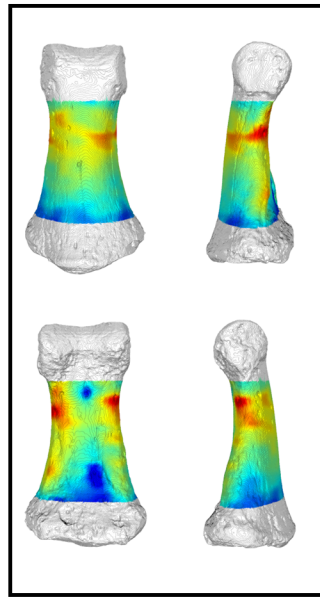
IP2



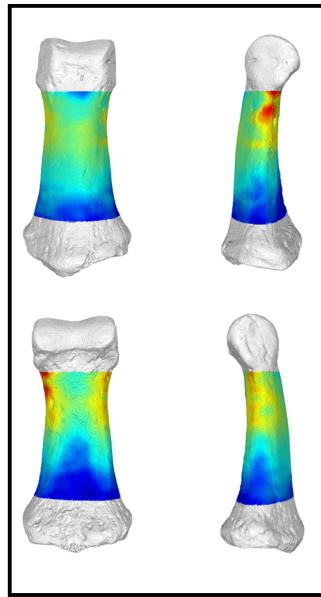
81\_H172\_H



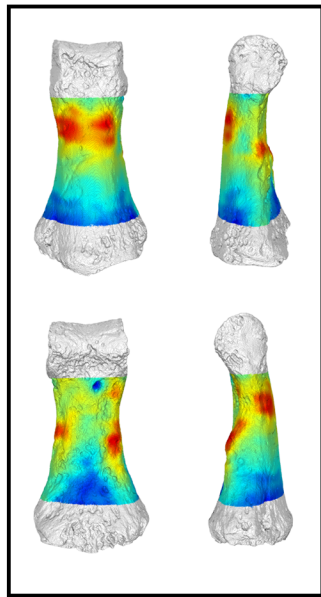
UNIFL\_4865



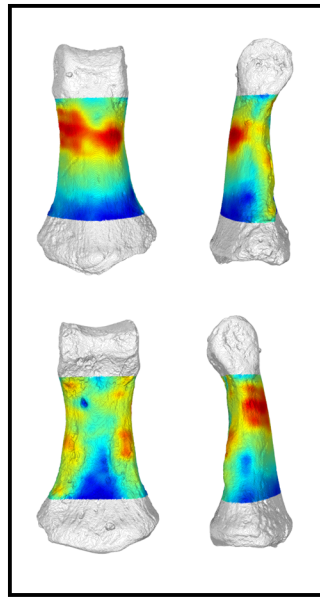
ARENE\_CANDIDE\_2



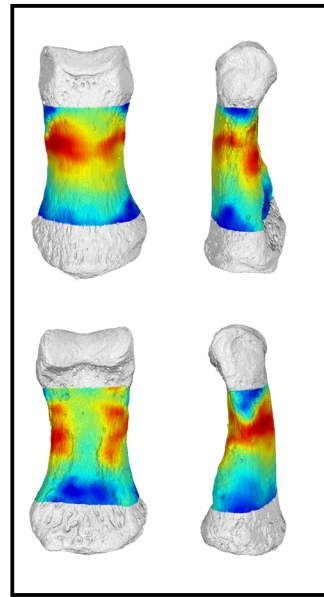
DV15\_118



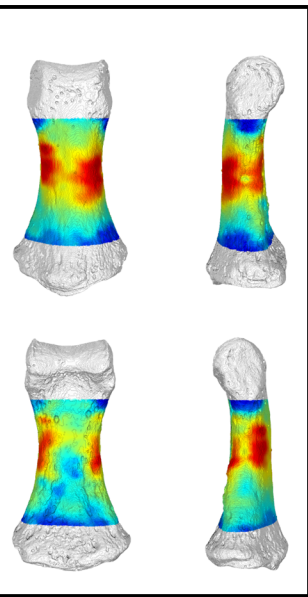
DV16\_97



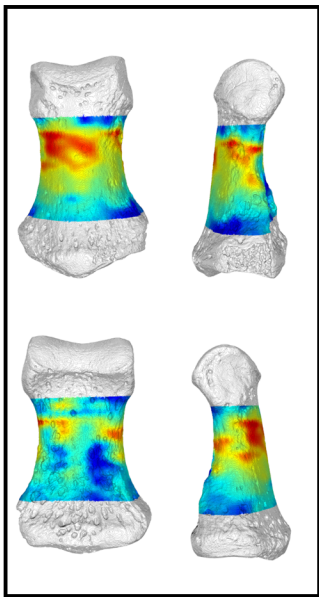
DV16\_98



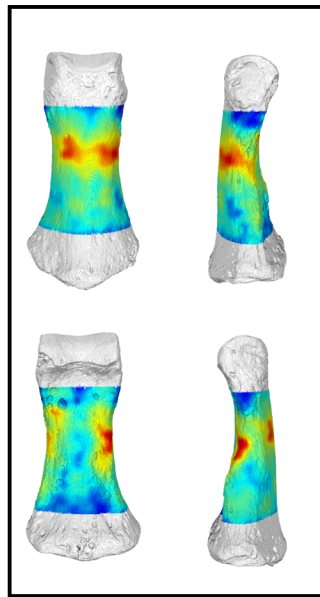
GAUG\_Inden\_119



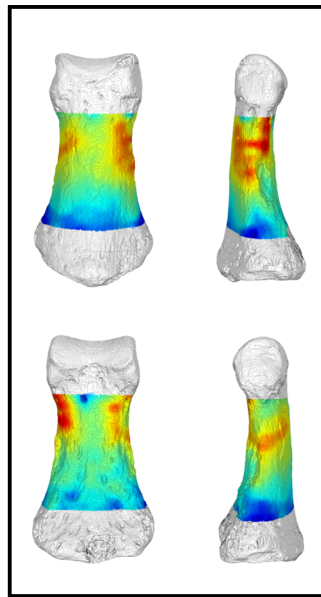
UNIFL\_4887



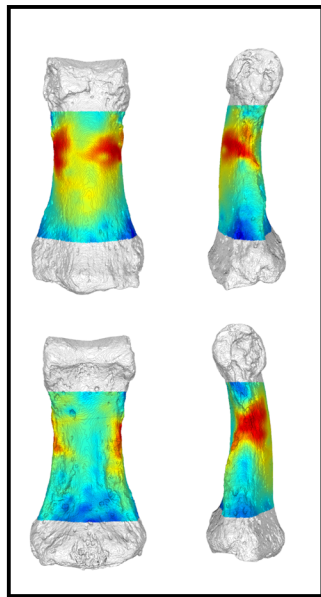
GAUG\_Inden\_243



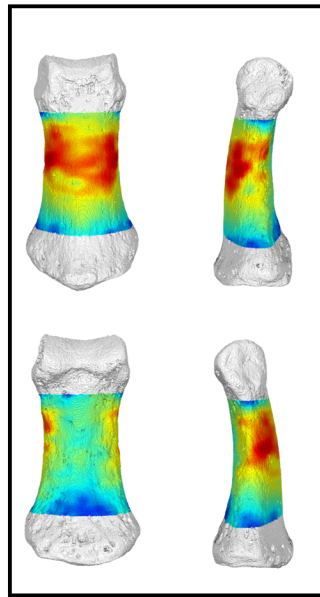
NHMW\_Nubian\_J7



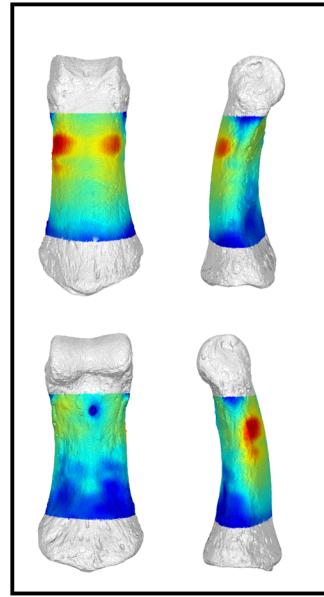
NHMW\_Nubian\_K5.2



NHMW\_Nubian\_K63

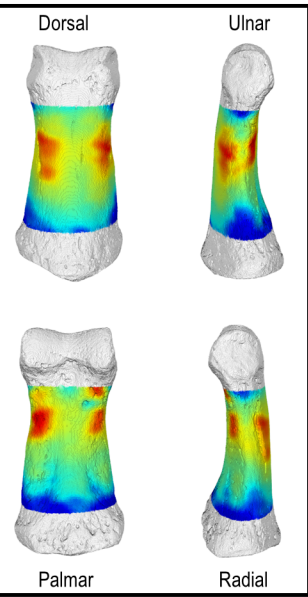


OHALO\_II\_H2



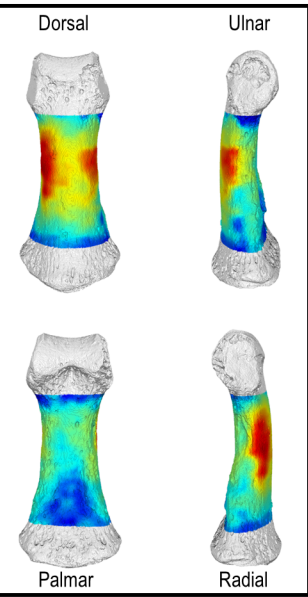
Qafzeh\_8

IP2

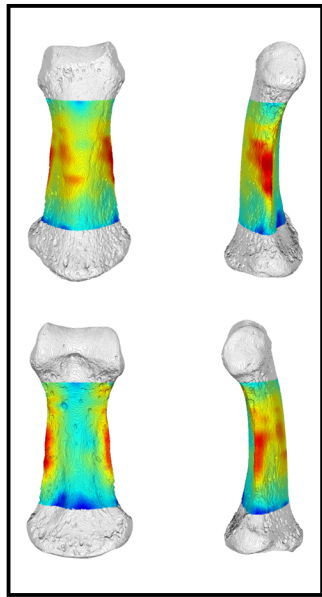


Qafzeh\_9

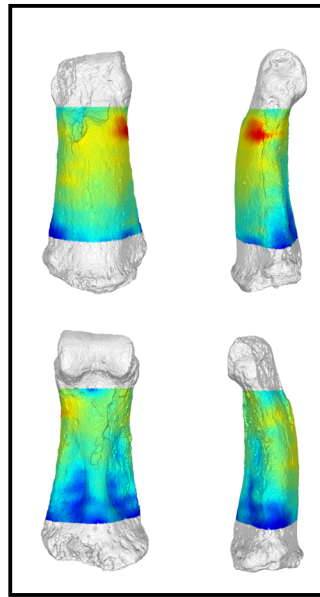
# IP3



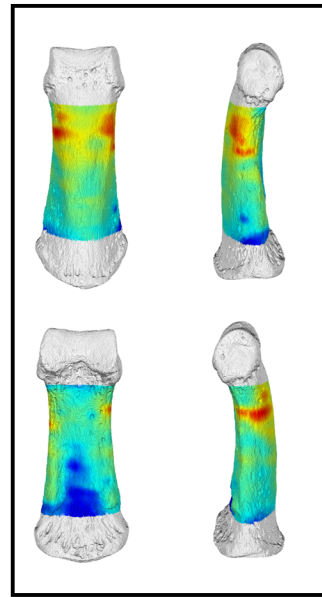
UNIFL\_4887



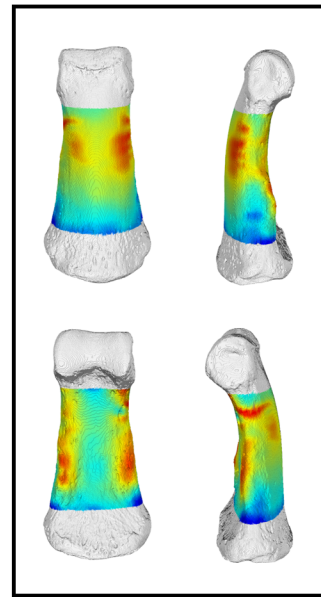
DCW\_AM\_3\_0\_2



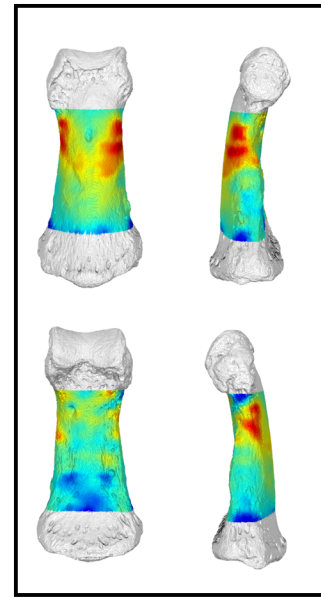
Qafzeh\_8



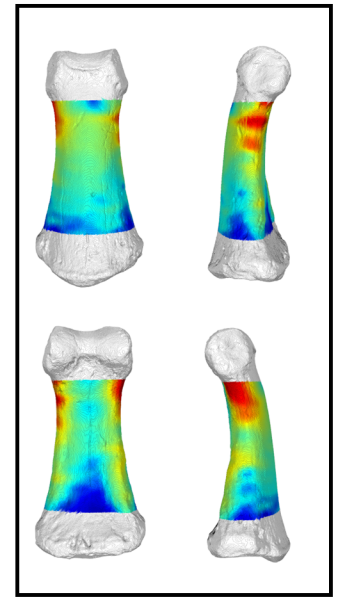
DCW\_OC\_1\_0\_141



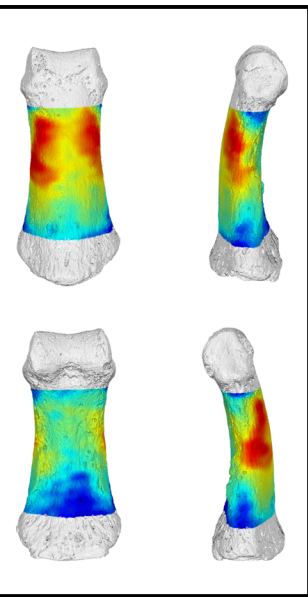
81\_H172\_H



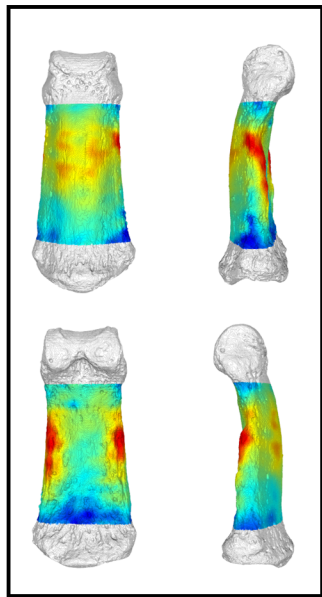
NHMW\_Nubian\_K5.2



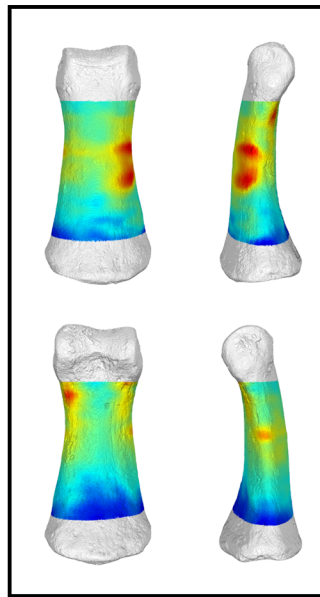
ARENE\_CANDIDE\_2



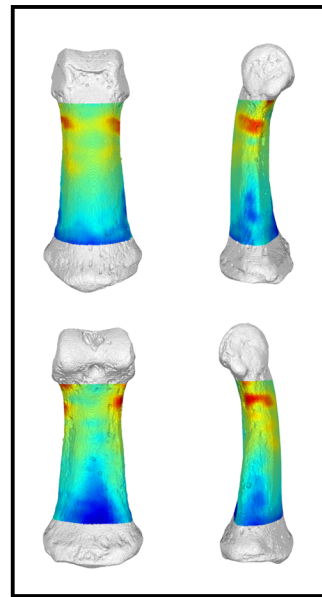
OHALO\_II\_H2



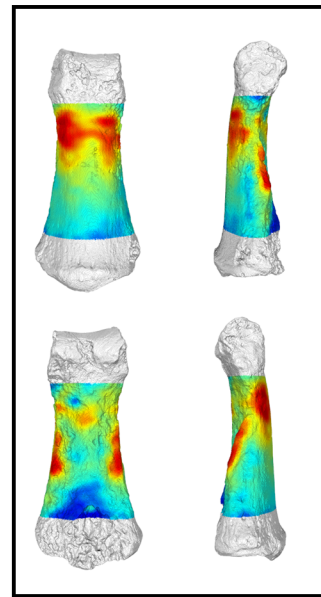
Barma\_Grande\_2



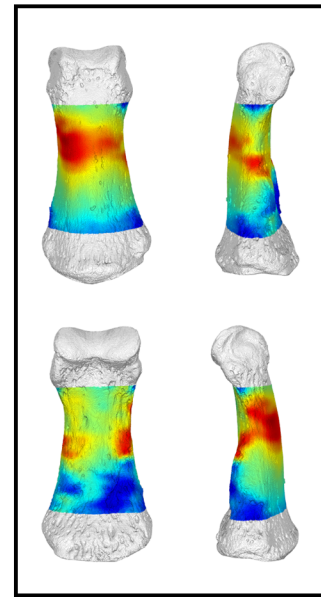
DV13\_96



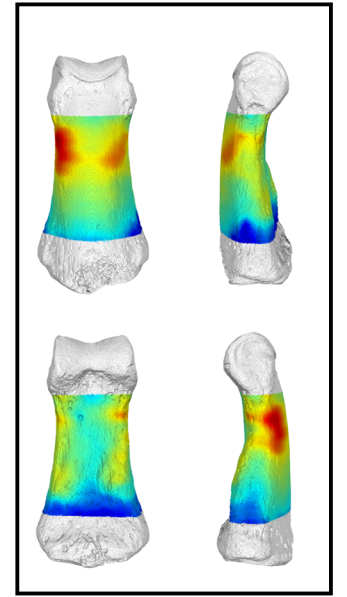
DV15\_116



DV16\_96

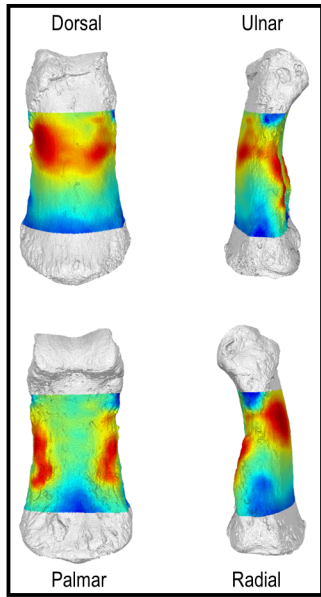


GAUG\_Inden\_91

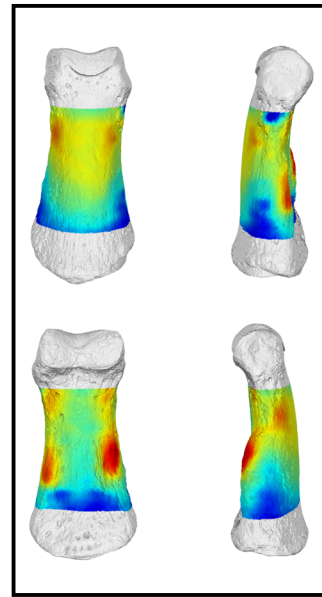


GAUG\_Inden\_113

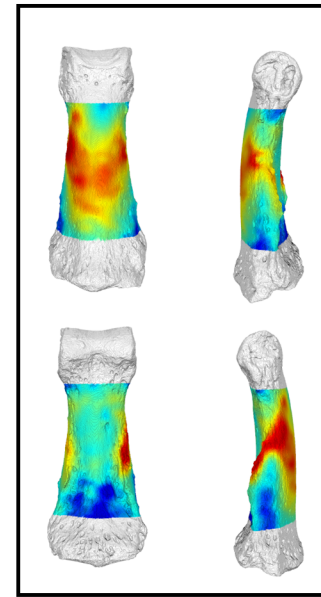
IP3



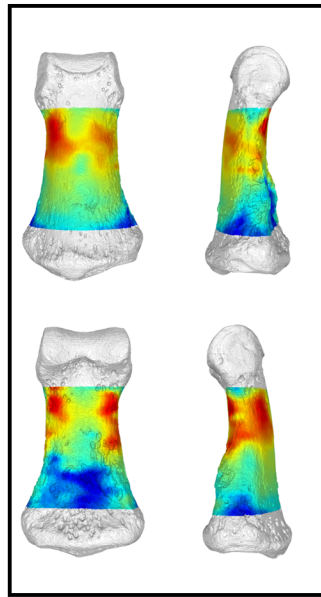
GAUG\_Inden\_117



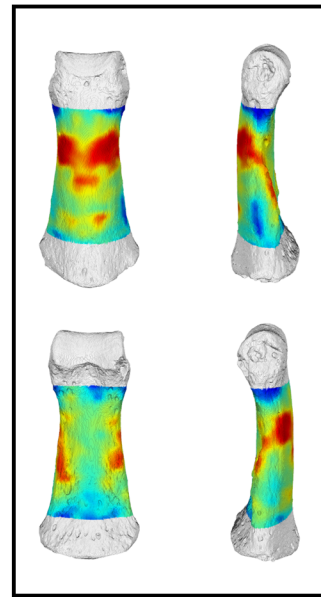
GAUG\_Inden\_119



NHMW\_Nubian\_K63



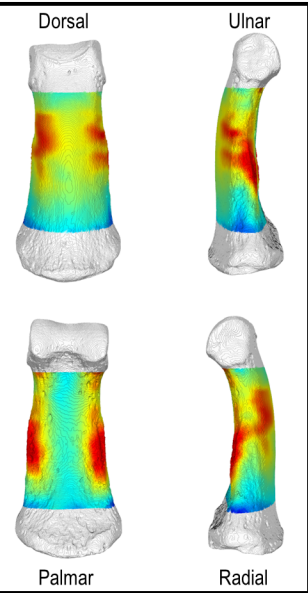
GAUG\_Inden\_243



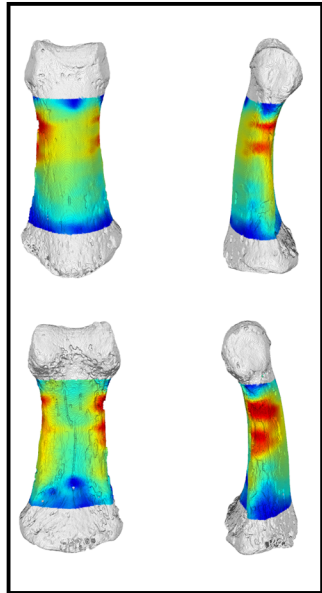
NHMW\_Nubian\_J7



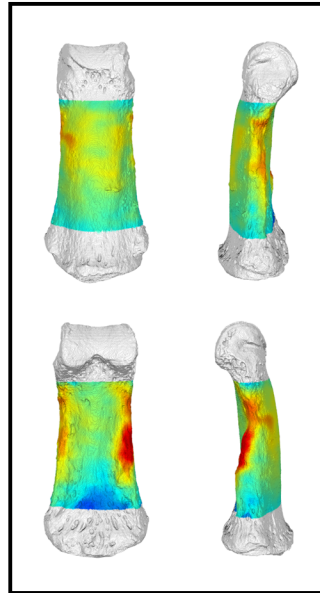
# IP4



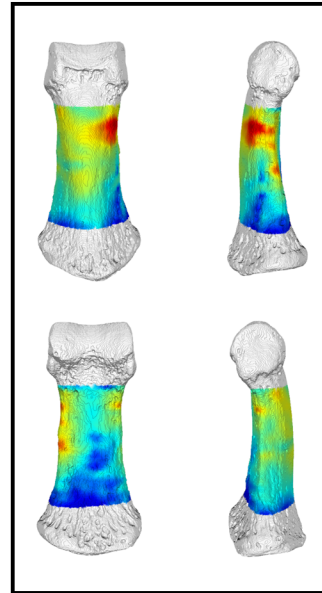
81\_H172\_H



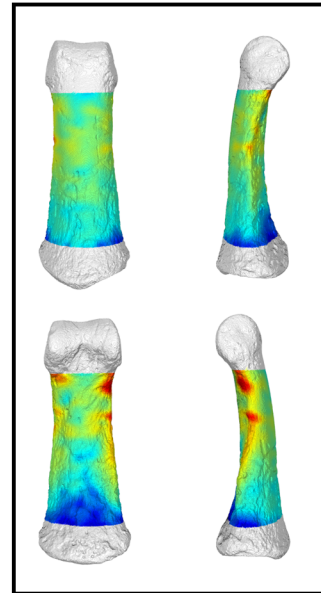
ARENE\_CANDIDE\_2



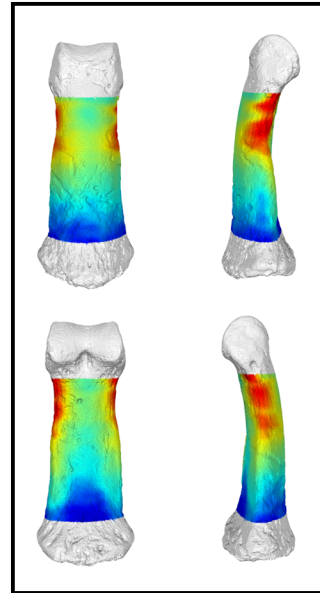
Barma\_Grande\_2



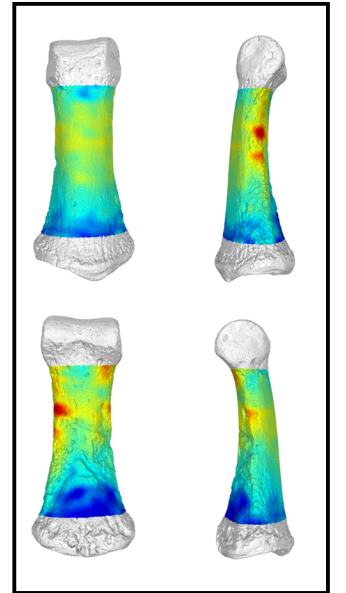
DCW\_OC\_1\_0\_141



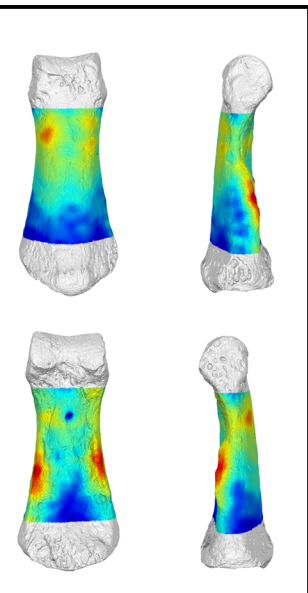
DV14\_123



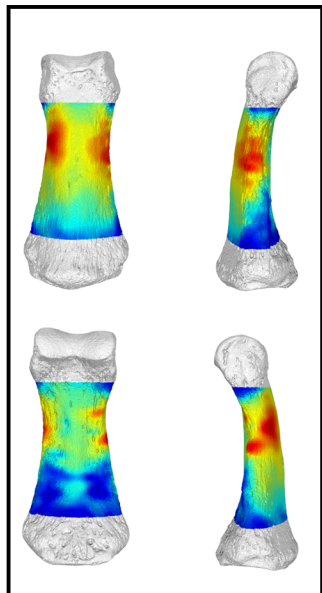
DV15\_115



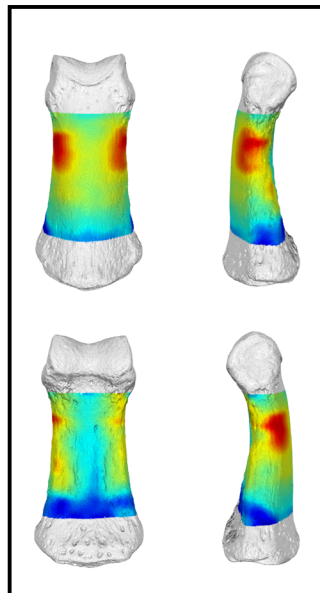
DV15\_117



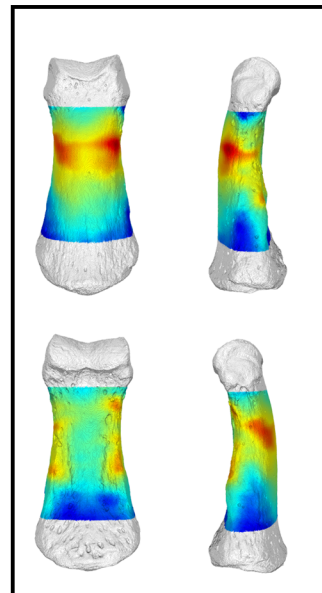
DV16\_93



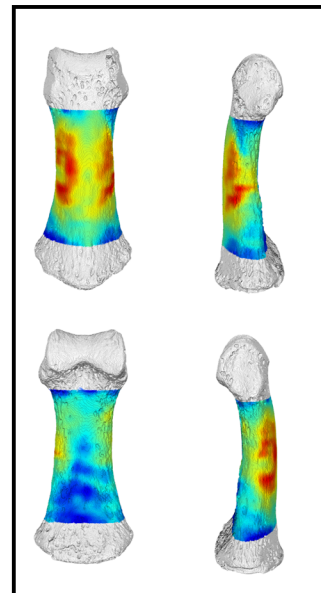
GAUG\_Inden\_91



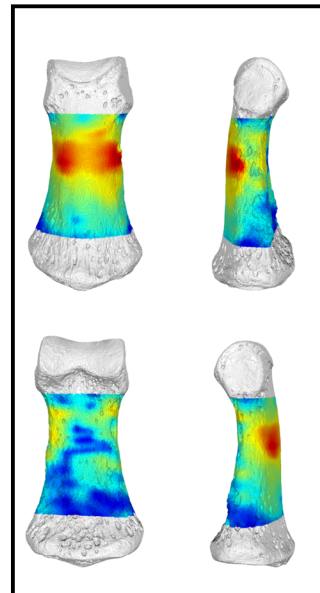
GAUG\_Inden\_113



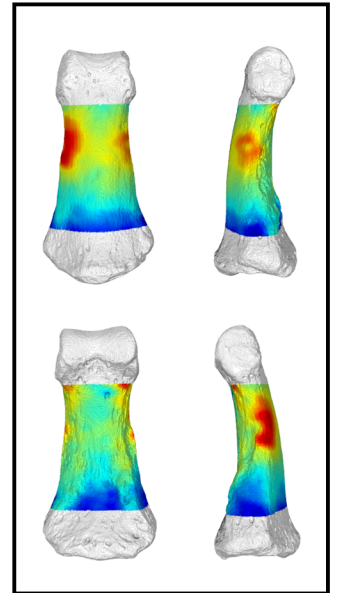
GAUG\_Inden\_119



UNIFL\_4887

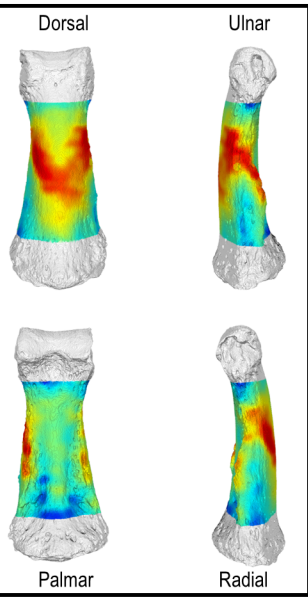


GAUG\_Inden\_243

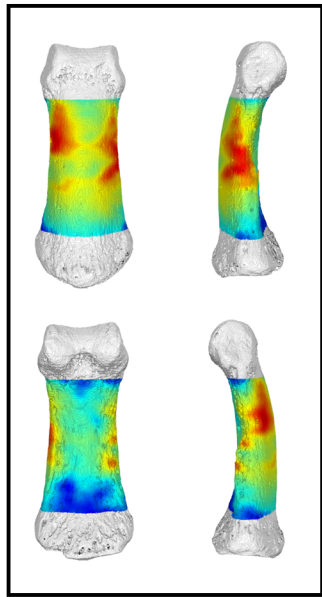


NHMW\_Nubian\_K5.2

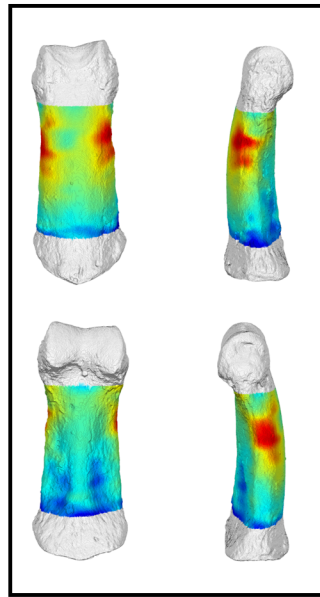
# IP4



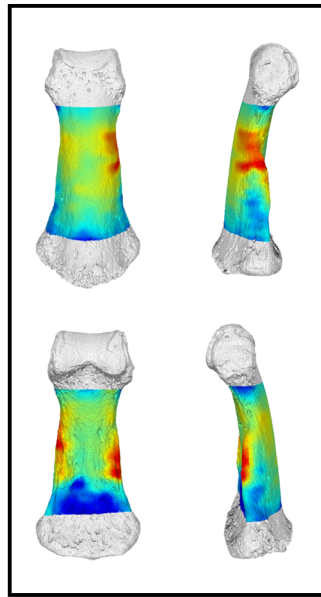
NHMW\_Nubian\_K63



OHALO\_II\_H2

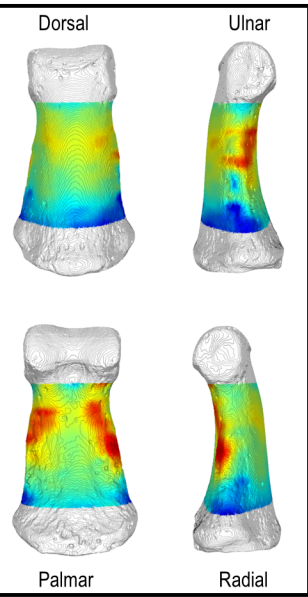


Qafzeh\_8

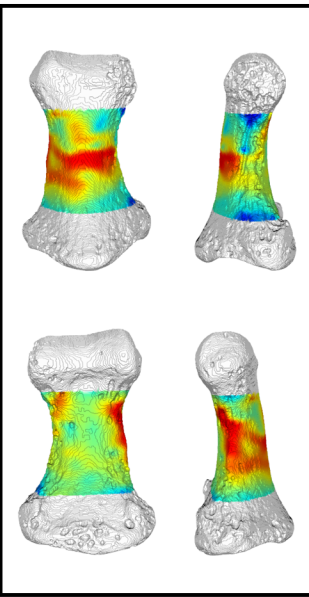


UNIFL\_4865

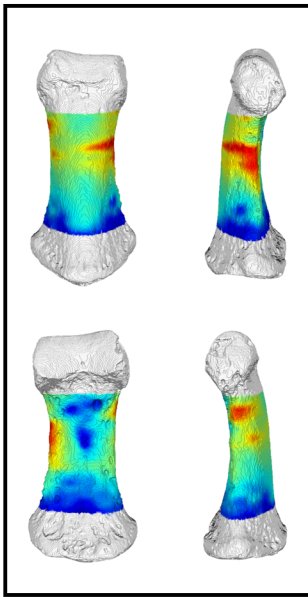
# IP5



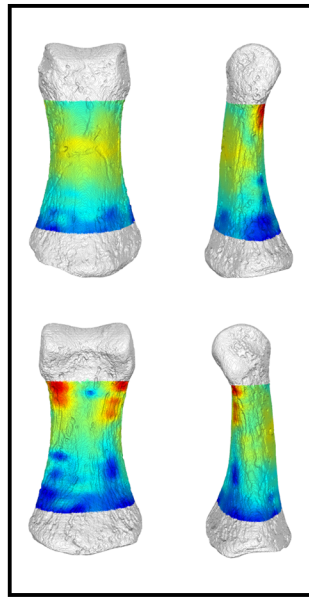
81\_H172\_H



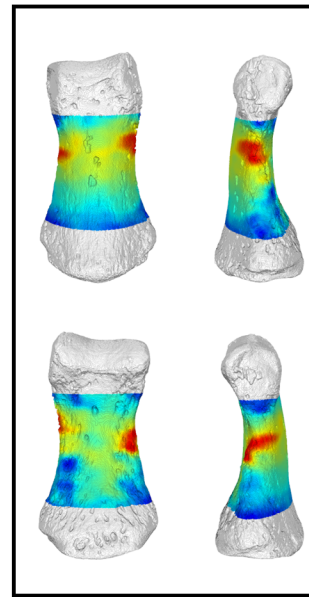
DCW\_AM\_3\_0\_2



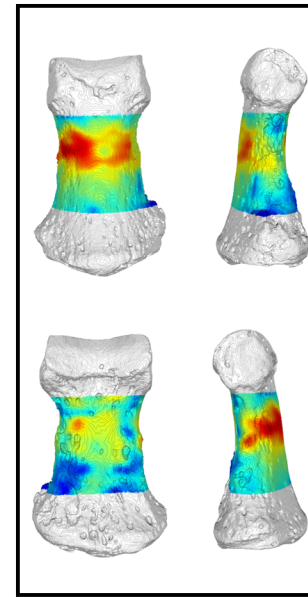
DCW\_OC\_1\_0\_141



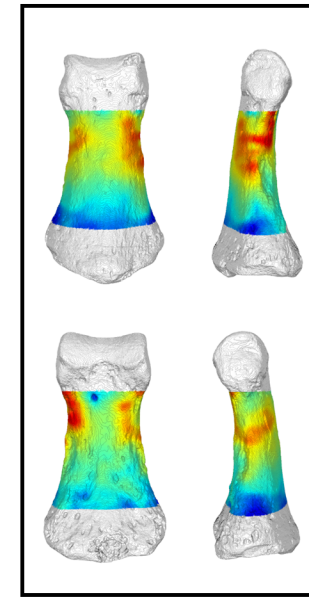
DV13\_98



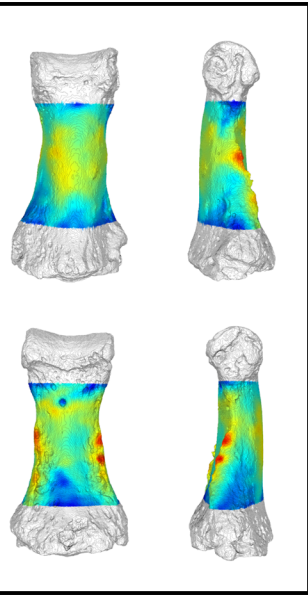
GAUG\_Inden\_91



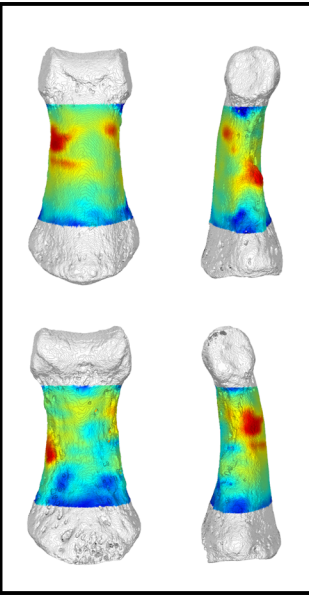
GAUG\_Inden\_243



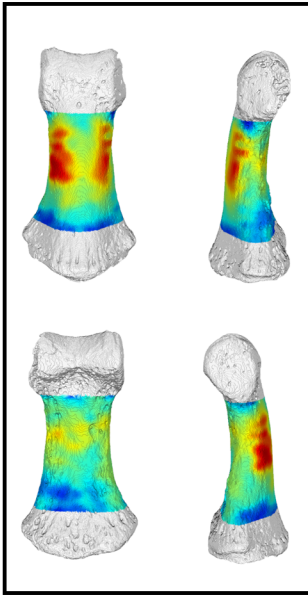
NHMW\_Nubian\_K5.2



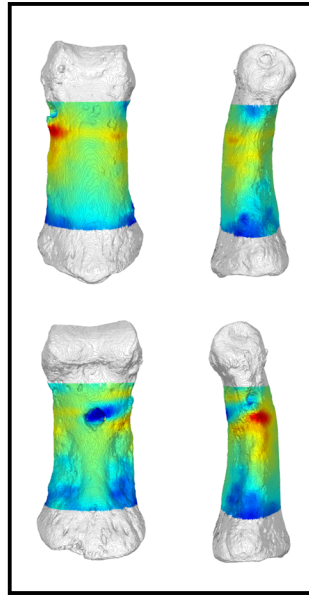
NHMW\_Nubian\_K63



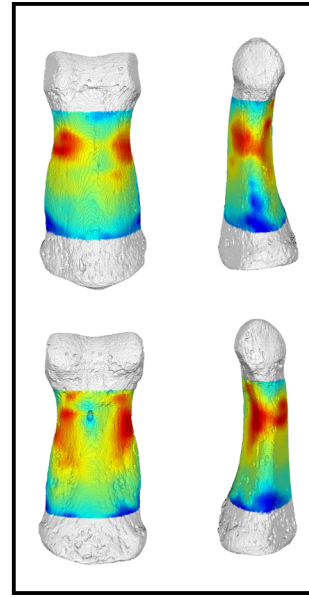
OHALO\_II\_H2



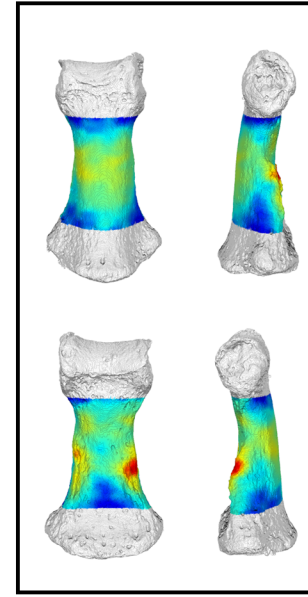
UNIFL\_4887



Qafzeh\_8

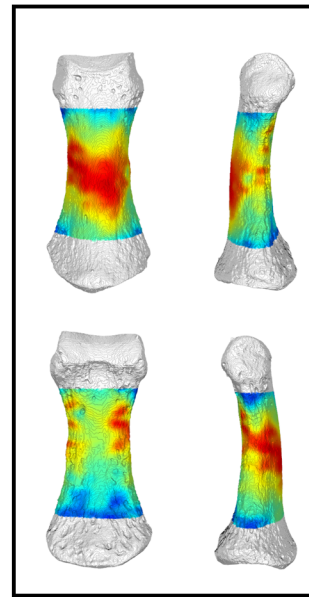
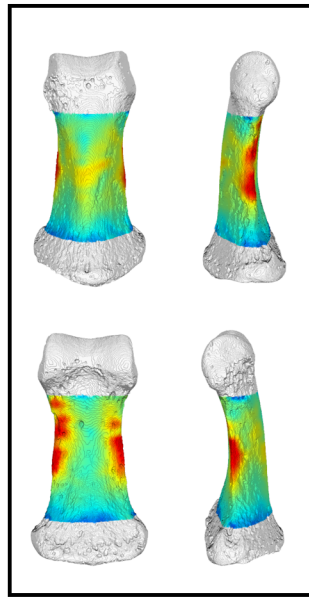
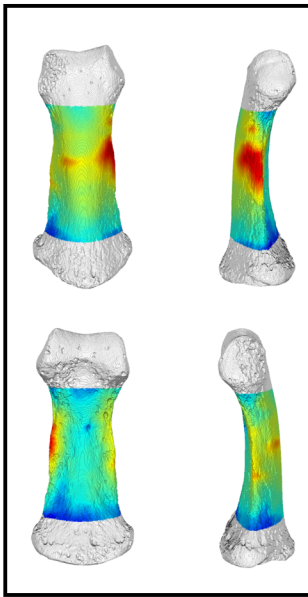
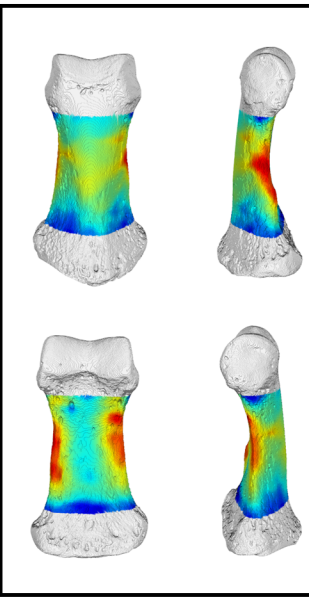
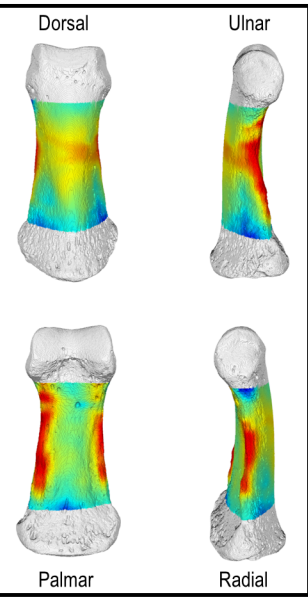


Qafzeh\_9



UNIFL\_4865

# IP2 or IP4



002\_DCW\_AM\_3\_0\_2

004\_DCW\_AM\_3\_0\_2

006\_DCW\_AM\_3\_0\_2

DCW\_AM\_3\_0\_2

DCW\_OC\_1\_0\_26

